

Making a world to live our lives with dignity

We support those who are vulnerable
to social and economic changes,
particularly affected
by COVID-19.

Through expansion of social security, improvement of working environment, promotion of social participation of people with disabilities and mainstreaming disability, we aim to realize a society where all people can live with dignity, while supporting each other's life as a society member.



Social Security

Only 45% of the global population are effectively covered by at least one social protection benefit (ILO).

ILO report also says that “only 29 per cent of the global population are covered by comprehensive social security systems that include the full range of benefits”.

In many developing countries, social security systems are not well developed. It is required to create more inclusive system, involving vulnerable groups, especially children, women, elderly people, persons with disabilities, and workers in the informal sector. In addition, it's also important to promote full and productive employment and decent work to secure the livelihood of working people.

About **15%** world's population lives with some form of disabilities



Global population effectively covered by social protection benefit are seriously limited.

**Disability and Development**

Approximately 1 billion people, or 15% of the world's population, live with some form of disabilities, and 80% of them live in developing countries (WHO).

Persons with disabilities are one of the groups most likely to be left behind, encountering a range of barriers including limited opportunities for health, education, and employment.

It is estimated that approximately 20% of the population in extreme poverty lives with some form of disabilities, and 90% of children with disabilities in developing countries are deprived of opportunity to attend school. Disability and poverty reinforce one another.

Japan can provide useful lessons to realize inclusive social welfare system in developing countries.

[Social Security]

Japan achieved universal health coverage and initiated universal coverage of pension insurance in 1961, at a relatively early stage of economic development. Besides, as a country experiencing rapid population aging, the Japanese government has modified social security system to adapt to demographic changes. These experiences can be valuable lessons for developing countries about how to share the fruits of economic growth to create comprehensive social security system and to tackle with aging population.

[Disability and Development]

As a country that has ratified the Convention on the Rights of Persons with Disabilities, it is the responsibility of Japan as well as JICA to realize an inclusive society through "full participation and equality", respecting the human rights of persons with disabilities both in Japan and the world.

Approach 1

Social Insurance System

JICA supports following issues with a focus on capacity development of public officials in administrative agencies:

Approach 2

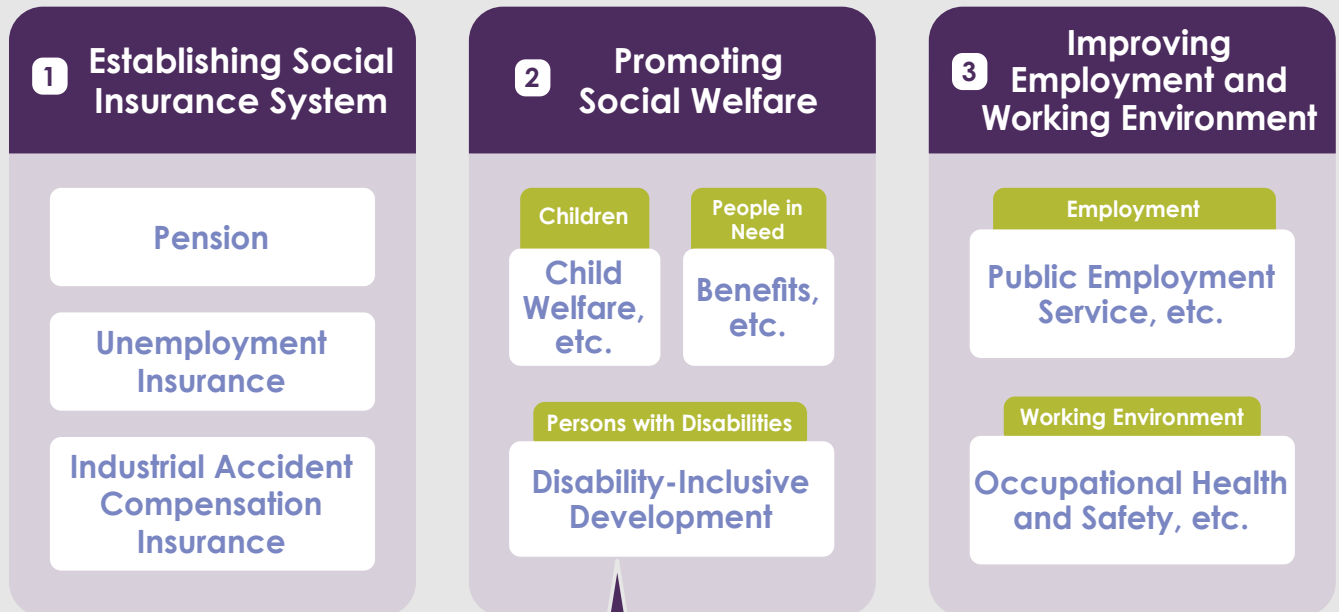
Social Welfare

JICA supports following issues with a focus on development of human resources engaged in social work:

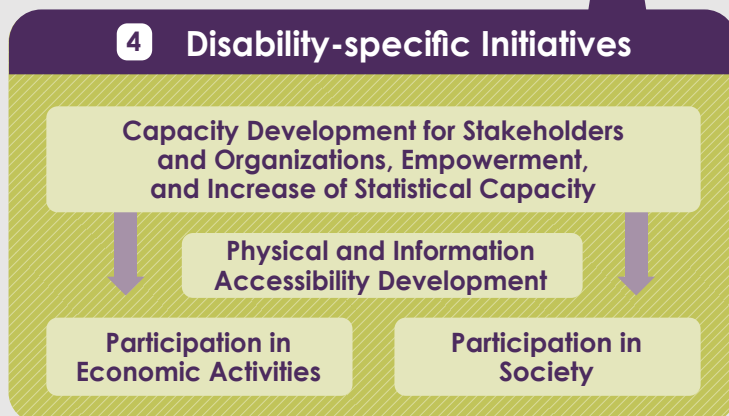
Approach 3

Employment and Working Environment

JICA supports following issues with a focus on promoting safe, full and productive employment and decent work:



4 Disability-specific Initiatives



Approach 4

Disability-specific Initiatives

JICA supports following issues with a focus on capacity development and empowerment of persons with disabilities:

Approach 5 Disability Mainstreaming Initiative

Disability mainstreaming ensures that persons with disabilities participate in the development process, including planning and implementation stages, as beneficiaries as well as practitioners by incorporating the perspective of disability into every sector and every development effort. JICA offers reasonable accommodation in Loan and Grant programs through

improvement of accessibility and information security, supports for persons with disabilities to participate in various plan-making processes, coordinates public awareness-raising activities and creates cross-sectoral programs including inclusive disaster risk reduction, inclusive education, medical rehabilitation and universal tourism.

Disability and Development

1 Developing seamless and comprehensive cooperation throughout life

In Mongolia, JICA provides comprehensive programs that support persons with disabilities throughout their lives at each life stage: childhood, school age, and adulthood. During childhood and school age, JICA works to establish a system for early detection of disabilities through infant examinations, improve education for children with disabilities, and construct accessible elementary and junior high schools. In adulthood, JICA aims to create a society where people with and without disabilities can work together. In particular, through the "Project for Promoting Employment of Persons with Disabilities", JICA has provided comprehensive support for the social participation of persons with disabilities and helped to design systems such as supported employment. JICA was also involved in the publication of Mongolia's first White Paper on Persons with Disabilities.



Hospitality training conducted by the project

Social Security

2 Diverse cooperation ranging from premium collection operations to financial verification of pension plans

In Mongolia, one of the challenges on social security is how to build a sustainable social insurance system, particularly pensions, while ensuring fairness among generations, gender and occupations. JICA has helped strengthen publicity for the social insurance system to increase participants in pension plans and improve the collection of premiums. In addition, JICA works with Social Insurance General Office to increase their capacity on the actuarial valuations of the pension system so that they will reform pension system based on demographic and tax revenue projections in light of the aging population and other factors.



Presentation by a representative of the Social Insurance Office, giving proposals for improvement of counter operations.

Working with Partners

JICA works with multiple organizations to share Japanese experiences, initiatives, and technologies with developing countries.

[Social Security] With the cooperation of relevant Ministries and academic institutions in Japan, JICA works to make the process of expanding Japan's social security system into "formal knowledge" that can be shared with those who are involved in social security policy making in developing countries. JICA also strengthens cooperation with Japanese local governments and social welfare councils that are in charge of social welfare administration practices.

[Disability and Development] JICA works on human resource development and empowerment of persons with disabilities, cooperating with local governments and related organizations that promote the social participation of persons with disabilities. In addition, JICA strengthens networks between Japanese organizations of persons with disabilities and those in developing countries.



Nibancho Center Building, 5-25 Nibancho,
Chiyoda-ku, Tokyo 102-8012, Japan
Email: jicahm@jica.go.jp



Japan International Cooperation Agency (JICA) is an international cooperation organization that is centrally responsible for the implementation of bilateral assistance among Japan's Official Development Assistance. JICA cooperates with about 150 countries and regions around the world.

What is JICA Global Agenda

JICA's cooperation strategies for global issues. JICA, with its partners, aims to show global impacts realizing the goals set under JICA Global Agenda. JICA Global Agenda and its goals will be shared among partner countries and various actors, enhancing dialogue and collaboration, therefore, maximizing the development impacts. Through these efforts, JICA will comprehensively contribute to the achievement of the SDGs by 2030 as well as realize Japan's Development Cooperation Charter which focus on "human security," "quality growth," and "addressing global challenges".

Photo: plo/Shutterstock.com