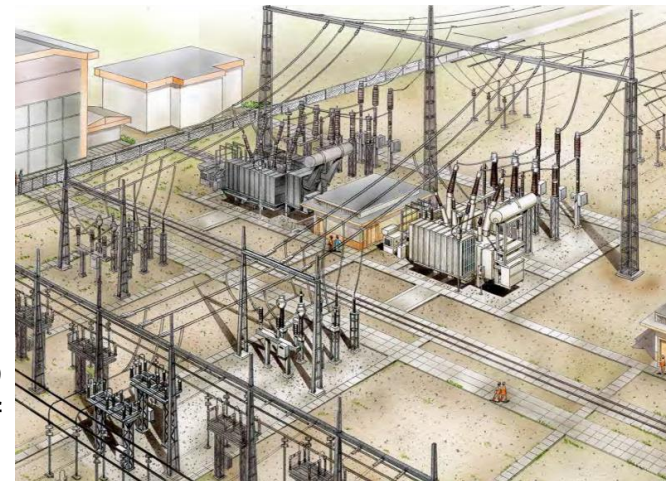


Project Outline

- **Duration:** 2017 ~ 2021
- **Sector:** Energy
- **Name of Counterpart Institution:** Electricity of Mozambique (EDM)
- **Type of ODA:** Grant Aid
- **Total Cost:** 1,390 million Japanese Yen
- **Project Overview:**
 - This project aims to achieve stable power in Maputo metropolitan and surrounding areas by/through the upgrading of Infulene Substation and the procurement of a mobile substation, thereby contributing to economic development of Mozambique



Perspective of the Infulene Substation

Development Issues / Background

- Electric power demand is increasing rapidly with annual rate of about 10%.
- Infulene Substation is the central substation that supplies electricity to Maputo metropolitan and its surrounding areas, the one of the transformer was installed in 1971, transmissions lines, equipment, substation and distribution system were dilapidated reducing its supply reliability considerably.
- Reinforcement of the system to meet increasing power demand in Maputo and surrounding areas was urgently necessary.

Expected Impact on Energy sector & Economy

- The existing transformer will be replaced to a new one with larger capacity as urgent rehabilitation to meet power demand.
- Mobile substation used as a distribution substation in Maputo and surrounding areas will stabilize the power supply.
- Stable power supply will contribute to the economic activities and improvement of the citizens' lives of surrounding areas.