



# JICA IN PALAU



## ODA & JICA

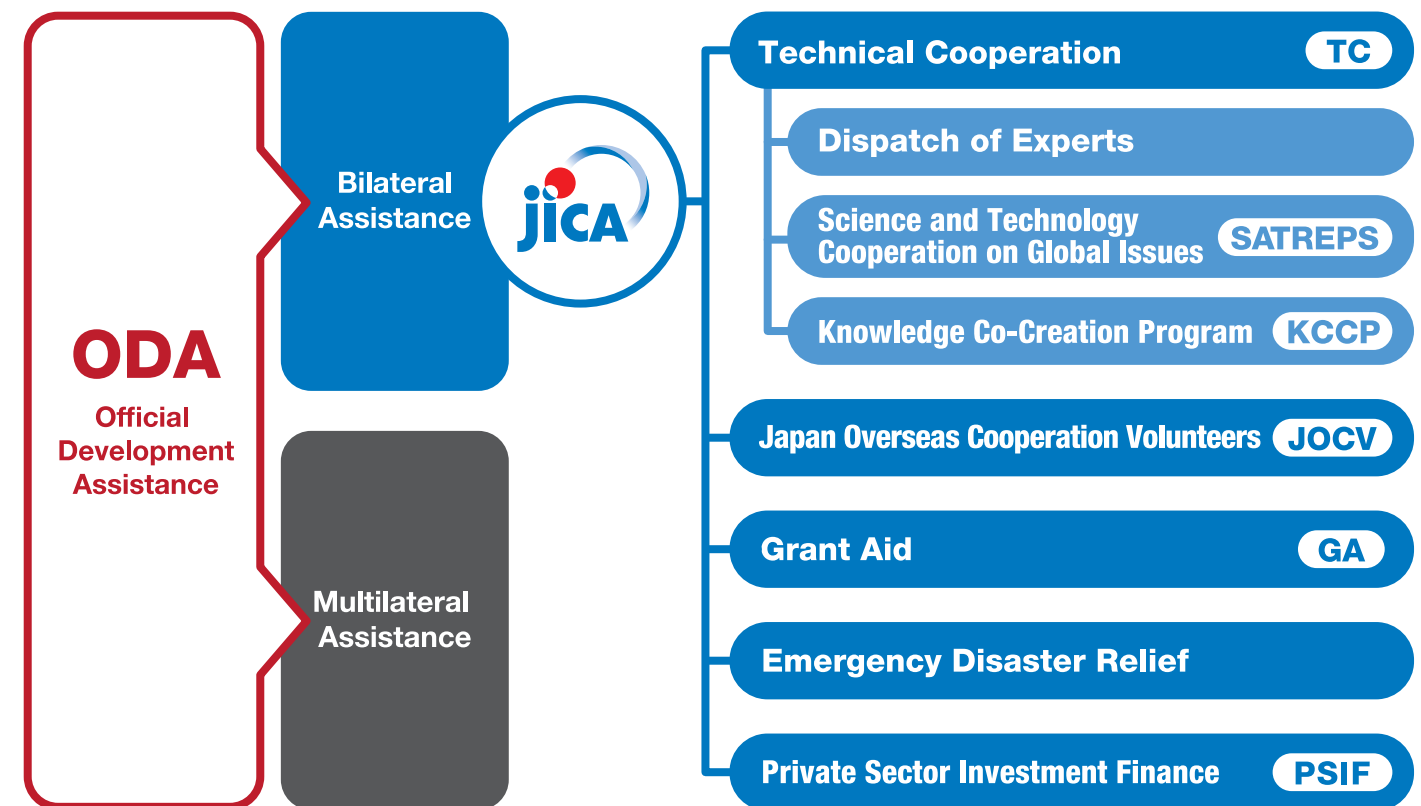
Japan International Cooperation Agency (JICA) administers Japan's Official Development Assistance (ODA). JICA supports socioeconomic development in developing countries through flexible combination of various types of assistance, such as Technical Cooperation, Finance and Investment Cooperation, Grants, Emergency Disaster Relief, Public-Private Partnership, and Citizen Participation. It is the world's

largest bilateral aid agency working with over 150 countries and regions. JICA was established in Palau in 1997 with JOCV Volunteers and numerous projects to date in infrastructure, socio-economic, environment, education, and trainings in Japan and Palau. JICA continues its commitment to support Palau in various assistance.

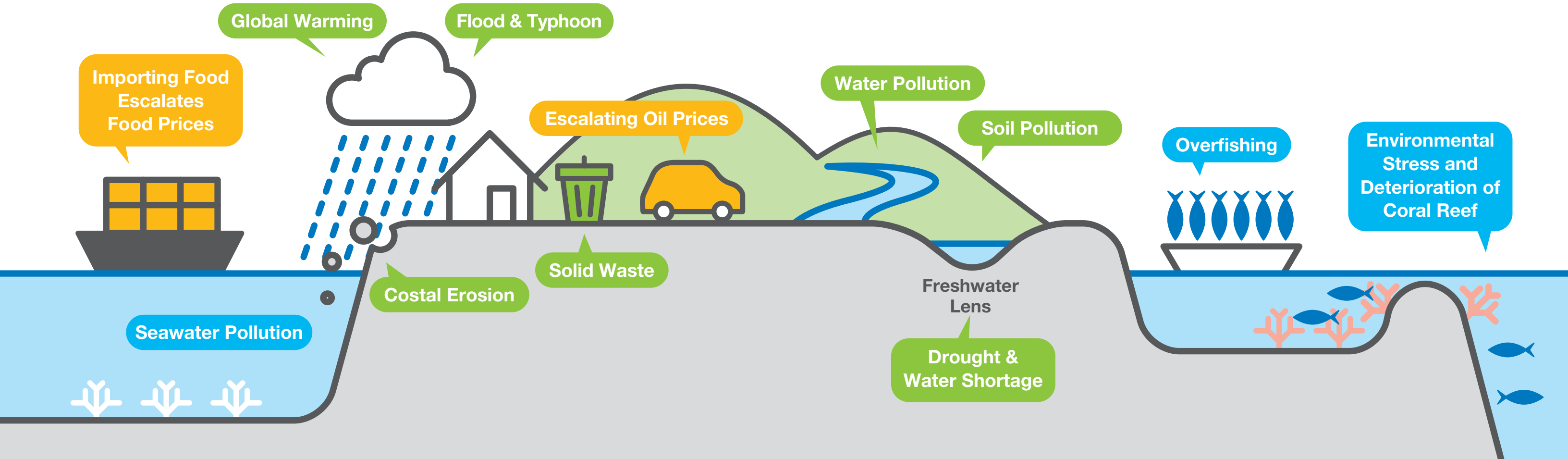
## Project Cycle



## Types of ODA



# Challenges in Palau



# Country Strategy for Palau

## CONCRETE TARGETS

Realization of a Sustainable Ocean	Capacity Development in the Area of Maritime Security
	Realization of a Sustainable Ocean
Strengthening Social Infrastructure and Industrial Development Infrastructure, Supporting Private Investment and Human Resources Development	Strengthen the Base for Economic Growth
	Improvement of Health Care Services
	Educational Function Enhancement
Environment, Climate Change, Disaster Prevention	Environmental Conservation
	Climate Change Countermeasures
	Improvement of Basic Learning Skills Especially in Science and Mathematics



SATREPS

## Project For Sustainable Management of Coral Reef and Island Ecosystems

The Sustainable Management of Coral Reef based Island Economy was a 5 year project from 2013 to 2017. The aim of the project was to construct sustainable management systems, with conservation of the coral reef driven by local initiative, training human resources with specialist knowledge.



KCCP

## Training on IUU

JICA's Knowledge Co-Creation Program provides training on Illegal, Unreported, and Unregulated (IUU) Fishing. This training aims to have participants improve their understanding of systems and actions necessary to deter IUU fishing and to think about the tangible countermeasures in their perspective counties.



KCCP

## Sustainable use of fisheries resources in island countries

The objective is to offer practical training for the promoting sustainable use of fisheries resources through various measures/approaches and diversification or fisheries-based livelihoods. It encompasses topics like coastal resource management, FAD fisheries, fisheries cooperatives, aquaculture, value-addition to fishery products and marketing.

GA

## Palau Mariculture Demonstration Center

To boost the economic benefits and promote smallscale artisanal fisheries, JICA constructed the PMDC as a grant aid project. Marine products for export, like the giant clam, tourism is an important industry for Palau. By providing the new PMDC facility and equipment, the project aims to strengthen the capacity to produce giant clam seeds, provide education on environmental conservation and carry out other activities which promote the culturing of giant clams.

PSIF

## The Palau International Airport Renovation, Expansion and Management

The project is to renovate, expand, operate the Palau International Airport to accommodate the increasing number of tourists. Japanese private companies established a joint venture with the government of Palau,

forming the Palau International Airport Corporation, for the operation of the airport terminal. JICA as the lender of the project, conducts due diligence on the project.



GA

## The Project for Improvement of Water Supply in Koror & Airai

May 2018 marked the completion of the project. The project aims to improve the water supply to Airai and Koror, limit water leakage and provide a new water tank to the system. Training for leak detectors was also provided. Following the project are continued support for various assistance such as training on Ecological Purification Systems and consideration for non-revenue water project, both to bring clean water and resolve lost revenue by leaks and unaccounted usage.

TC

## Study on Upgrading and Maintenance Improvement of National Power Grid

With an aim to upgrade and enhance Palau's National Electrical Power Grid with proper integration of sustainable renewable energy, a master plan of the transmission and distribution system was prepared. Technical assistance for the reinforcement of operation & maintenance of transmission and distribution lines was also conducted.



JOCV

### JOCVs in Health Sector

There have been a number of JOCVs in the Belau National Hospital as Nurses, Dental Technicians, and Pharmacist. The volunteers in the various areas in health share their expertise to widen and advance counterpart skills.



HEALTH

**HUMAN RESOURCE DEVELOPMENT**



EDUCATION

JOCV

### JOCVs in Education Sector

The education sector is the biggest recipient of the volunteers specializing in math and science. Volunteers in the different schools work together to support transferring skills to their counterparts and students. Math Hero is one of their creations to increase students' interest in math.

Physical Education is also an increasing demand for the schools' curriculum.



GA

### Project for Construction of National Landfill

Construction of the New National Landfill was completed 2020 and it is operable for more than 20 years. A semi-aerobic waste treatment system, "Fukuoka Method", is applied for the landfill to decompose the waste so that it prevents gas from emitting and polluted water from flowing out.

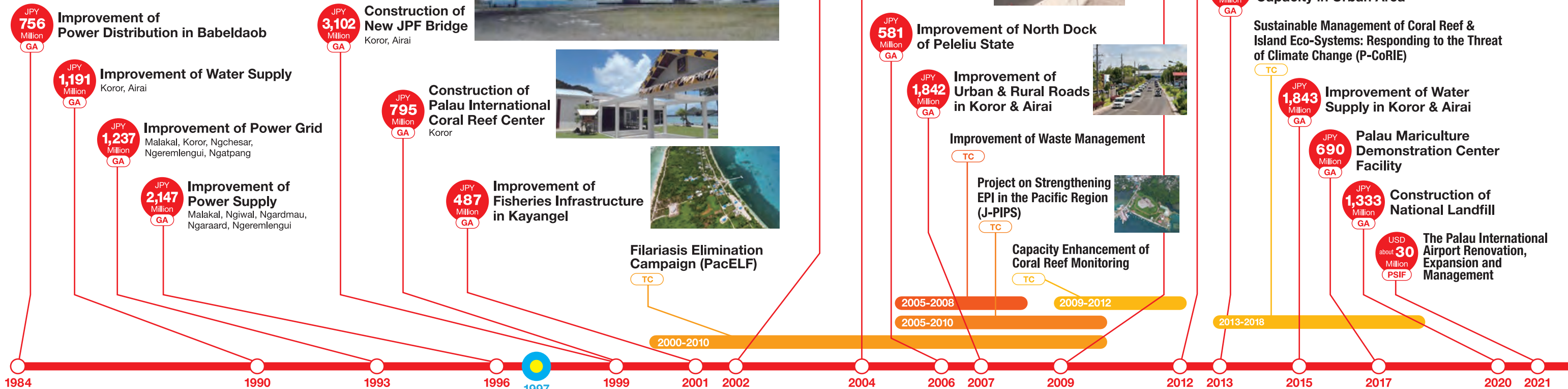


To enhance the sustainable management of solid waste in the Pacific region, the national strategy of solid waste management was elaborated and waste collection is now improved in 10 states in Babeldaob. In addition, operation of M-Dock Landfill has been improved through the project.



The Project is being conducted in Ibobang and Mongami through collaboration between JICA and Japanese environmental organization, ICETT. The purpose is to establish the appropriate sorting and recycling system of the household wastes by the participation of community and local government for formulation of recycle-oriented society.

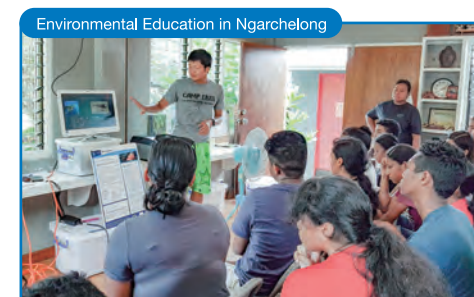
# HISTORY OF JICA PROJECTS IN PALAU



# HISTORY OF JOCV IN PALAU



First Dispatch





**Japan International Cooperation Agency Palau**

PO BOX 6047, Koror, PW 96940

+680 488 5370 /+680 488 5373

[www.jica.go.jp/english](http://www.jica.go.jp/english)