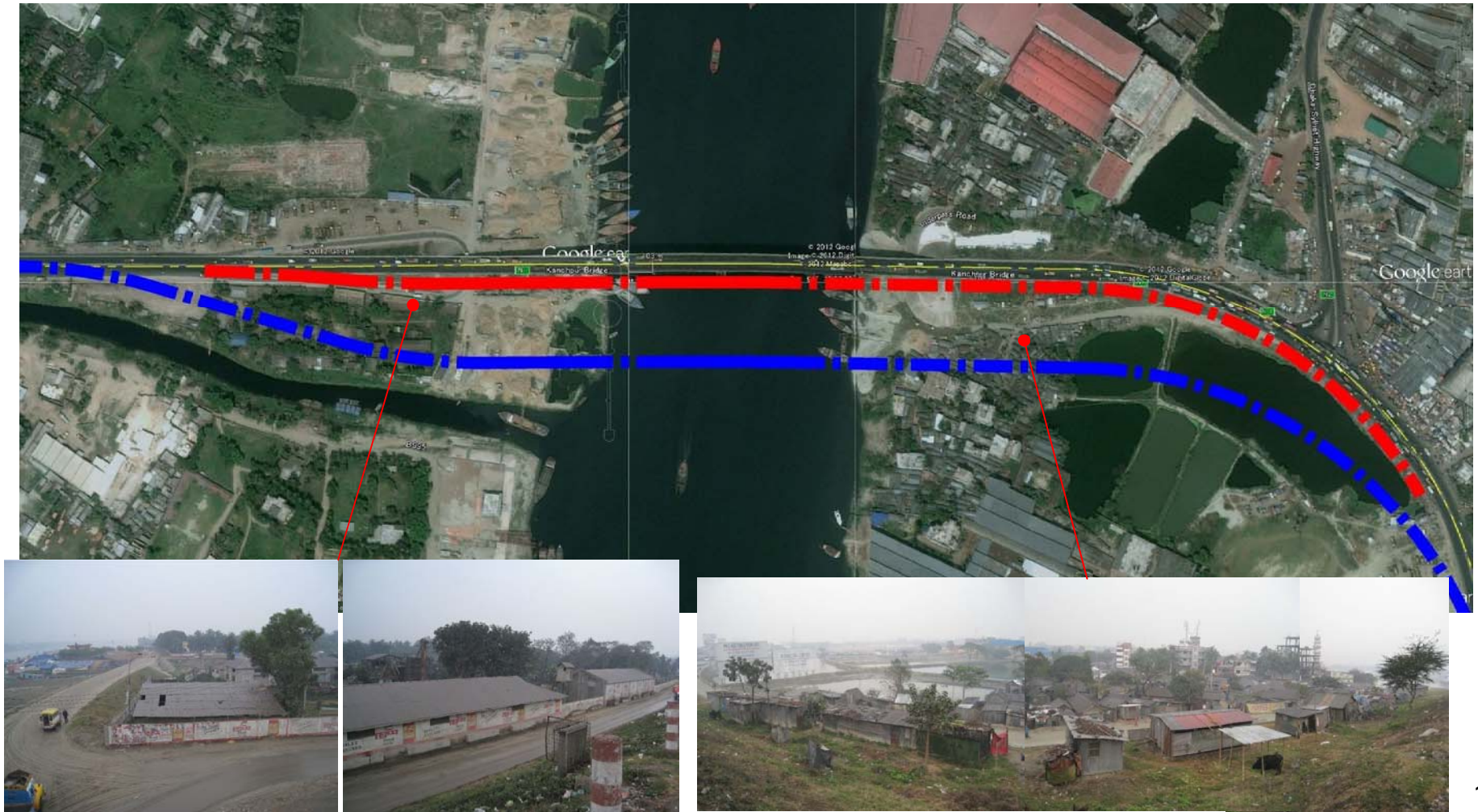


■ *Alternative alignment (Kanchpur Bridge)*

Alignment A : Next to existing bridge

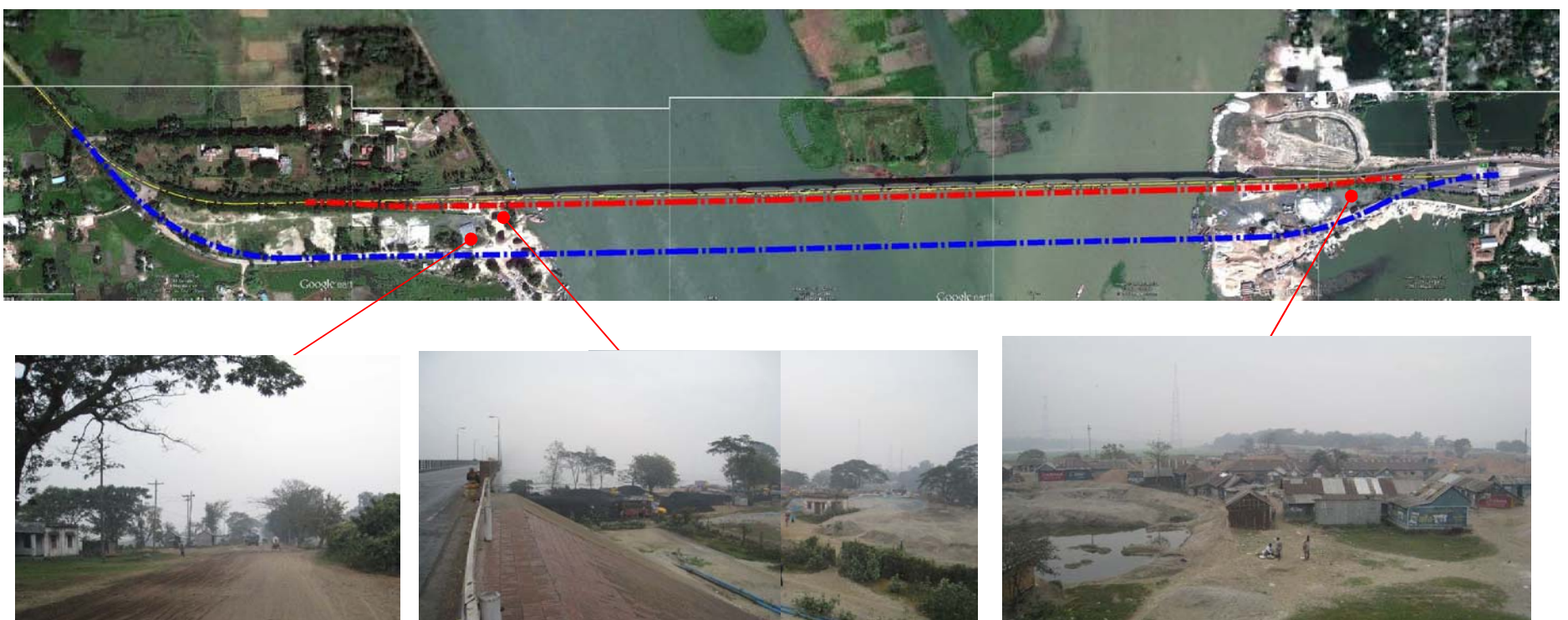
Alignment B : Secure distance from existing bridge



■ *Alternative alignment (Meghna-Gumti Bridge)*

Alignment A : Next to existing bridge

Alignment B : Secure distance from existing bridge

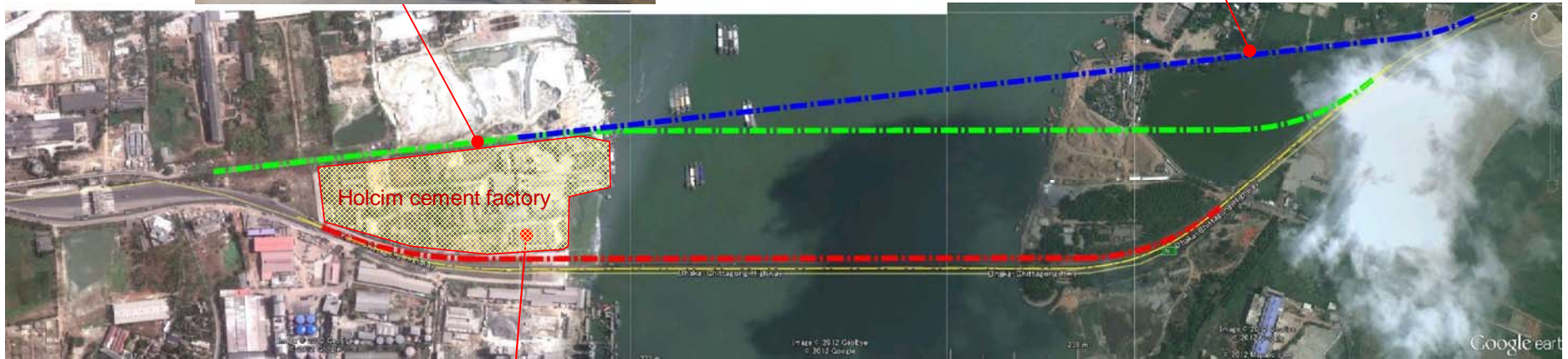


Alternative alignment (Meghna Bridge)

Alignment A : Next to existing bridge

Alignment B : Secure distance from existing bridge

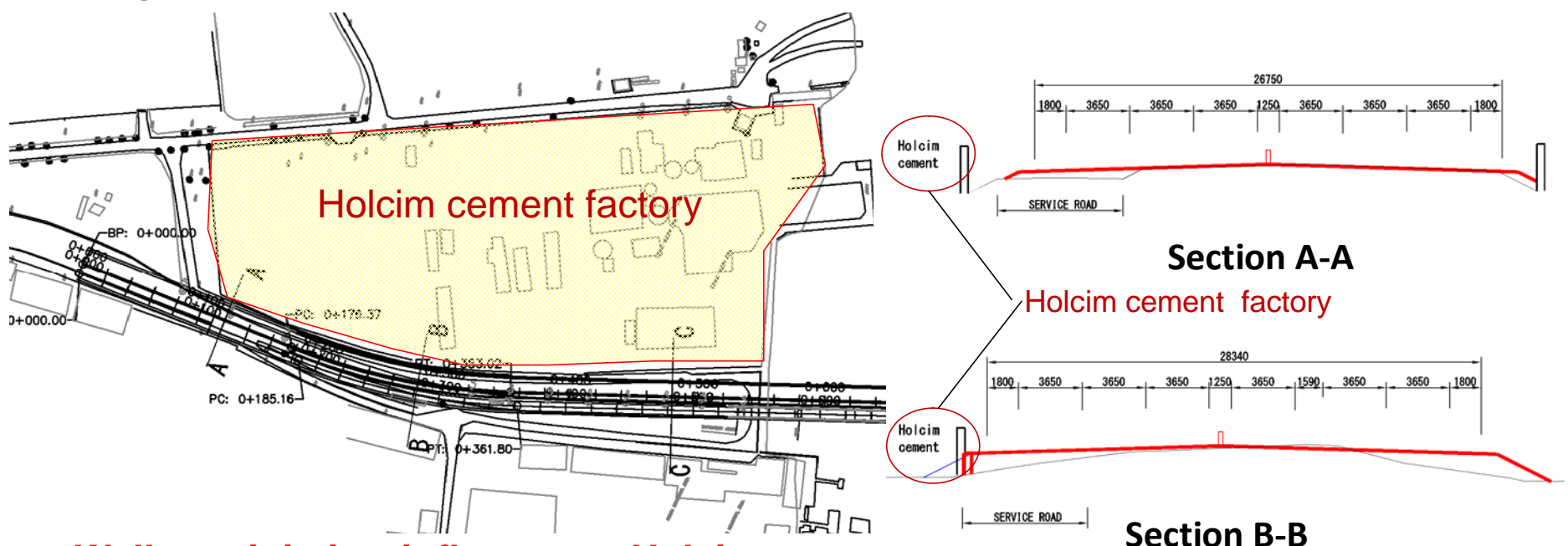
Alignment C : Minimize resettlement Issue (Chittagong side) on B



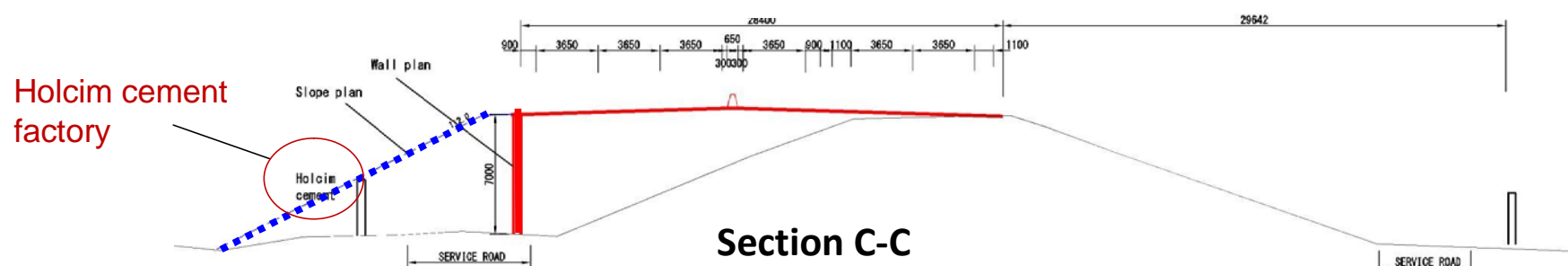
3

Influence to Holcim cement (Alignment A)

Alignment A : Next to existing bridge (Preferable)



- Wall to minimize influence to Holcim cement
- New alignment influences Holcim cement boundary by 3m
- Service road is not used after project



4

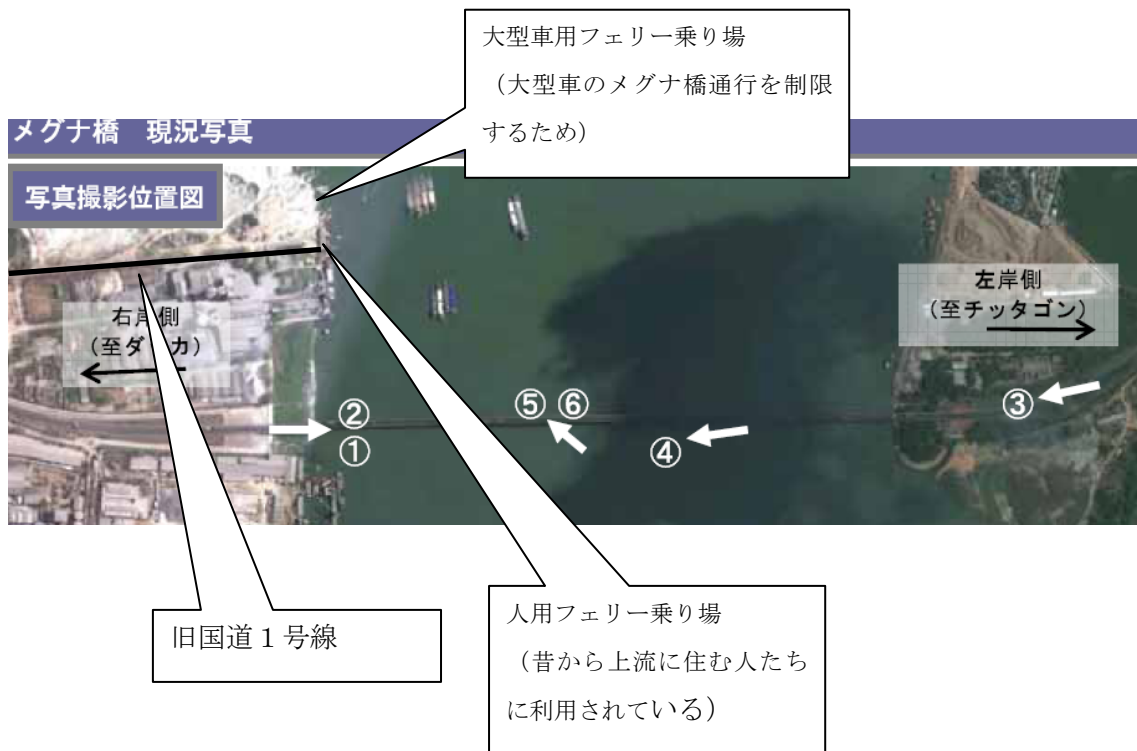


図 フェリー乗り場の位置