

RSA Activities:

RSA is planning/implementing the following activities:

Regional Integration

- Promoting Regional Integration

Transport

- Supporting and implementing program/project formulation and M&E activities
- Corridor Development

Energy

- Supporting program/project formulation and M&E activities for Energy projects

Health

- Developing Assistance Strategy Paper
- Program/project formulation and M&E activities
- Strengthening cross-country networking among JICA health experts and JOCVs in the region
- Supporting 5S-TQM – CQI & HIS

Water Supply

- Developing and implementing Assistance Strategy Paper
- Supporting program/project formulation and M&E activities in water sector

One Village One Product

- Supporting program/project formulation and M&E activities

Grant Aid Program

- Developing Assistance Strategy Paper
- Supporting program/project formulation and M&E activities for grant aid projects

ODA Loan Program

- Supporting and implementing program/project formulation and M&E activities for Yen Loan projects

Regional Staff Information and Training

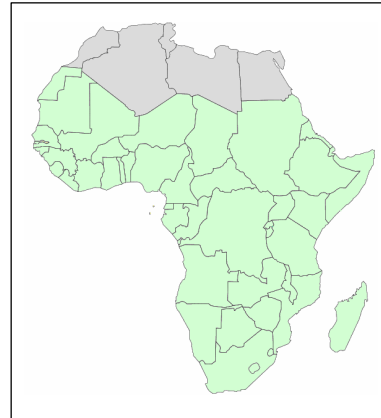
- Preparation of program and training materials
- Implementing staff training programs
- Distributing and sharing information related to JICA's aid management in English

Promoting Africa-Asia Cooperation

- Supporting formulation and implementation of Africa-Asia cooperation programs/projects

Countries Covered by RSA

JICA has 26 offices in Sub-Saharan Africa and implements technical assistance in 48 countries. The Regional Strategy Unit under the Kenya Office targets these countries through its regional/cross-border programs and technical support to country offices in the region.



Collaboration with other Actors

In order to provide quality support activities and promote Asia-Africa cooperation, RSA strengthens collaborative relationships with key institutions in both Sub-Saharan Africa and Asia. It also collaborates with other bilateral and multilateral agencies to maximize on their effectiveness, e.g. USAID, DFID, WB and AFDB.

RSA also works with various Regional Economic Communities (RECs) in various sectors. Some of these are the Southern African Development Community (SADC), the Economic Community of West African States (ECOWAS), West African Economic and Monetary Union (UEMOA) and the East African Community (EAC).

Contact Address

Japan International Cooperation Agency (JICA)
Regional Strategy Unit for Africa (RSA)
JICA Kenya Office
Rahimtulla Tower, 17th Floor, Upper Hill Road
P.O. Box 50572-00200, Nairobi, KENYA
Tel. +254-20-2724877/152 Fax. +254-20-2720190
<http://www.jica.go.jp/kenya/english/>



Japan International Cooperation Agency



Regional Strategy Unit for Africa
(JICA RSA)

**Photo: Rusumo Bridge, connecting Rwanda on the left
and Tanzania on the right*

Background

JICA reforms begun in October 2003, when it became an independent administrative institution. It has continued to reform both its organization and operations in order to make the implementation of aid activities more effective and efficient.

Since April 2004, JICA has been focusing on the concepts of “field-oriented management”, “human security” and “effectiveness, efficiency and speed” as primary aims of the organizational reform. This reform culminated in the JICA-JBIC merger in October 2008, making the New JICA the second largest bilateral donor agency in the world.

As much as possible, authority is transferred to JICA’s overseas offices to ensure a flexible response to the diverse needs of developing countries. As one step in achieving this policy, a Regional Support Office (RSA) was established in Nairobi in October 2004. In October 2009, it became the Regional Strategy Unit for Africa.

RSA has been strengthening activities in program/project formulation, monitoring & evaluation and aid strategy formulation in Sub-Saharan African offices, as well as other offices outside this region. Additionally, it is now emphasizing Regional and Cross-border programming.

Objectives of RSA

The priority of development issues and the government capacity to effectively manage and absorb development resources varies from country to country and from institution to institution; thus, aid strategies and approaches must be tailored to each particular set of circumstances.

In this context, JICA country offices must strengthen their capacity to formulate more effective country assistance programs and projects in line with partner countries’ development strategies. Furthermore, such programs and projects must be carefully monitored and evaluated, in close collaboration with other concerned actors.

In order to meet the capacity required for sound program formulation and effective program implementation, JICA country offices need support.

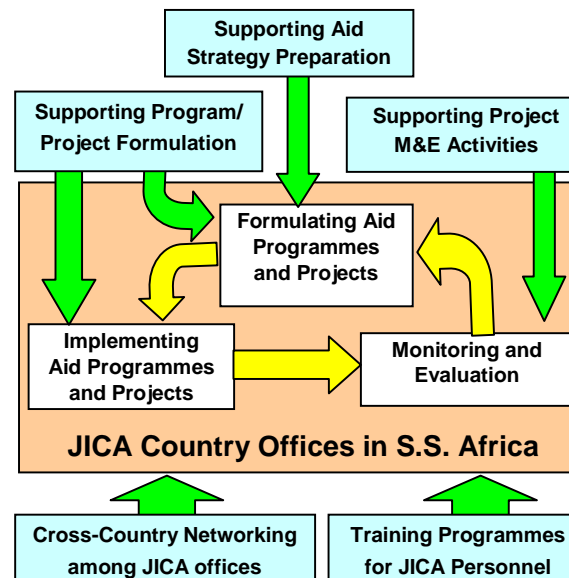
Thus, the objective of RSA is to improve JICA’s region-specific program/project implementation capabilities, as well as its aid effectiveness and impact on development.

Main Functions

The JICA Regional Strategy Unit for Africa (RSA) works as a control tower to achieve the Yokohama Action Plan together with the TICAD IV Follow-up Unit of JICA Headquarters in Tokyo, Japan. As a result, it has improved its region specific program/ project implementation capabilities and gained a precise understanding of the needs of the region. As more countries embrace economic regionalization thereby promoting cross border trade and programs, the role of the RSA in enhancing this is becoming more visible. The services of the RSA can be categorized in five areas namely;

1. **Aid Strategy Formulation:** RSA conducts research to grasp and analyze general & specific information about development trends and aid practices in the region.
2. **Program and Project Formulation:** On request from JICA country offices, RSA dispatches experts to conduct necessary needs finding and support program and project formulation activities.
3. **Monitoring and Evaluation (M&E):** RSA dispatches experts to projects to conduct M&E activities. Lessons from M&E are shared with key actors in the project.
4. **Cross-Country Networking:** RSA facilitates workshops and seminars to share necessary information with JICA staff and other organizations. RSA also distributes and shares information related to aid management in English.
5. **Training Program:** RSA develops and implements training programs needed by JICA personnel in order to implement effective aid activities.

Image of Functions

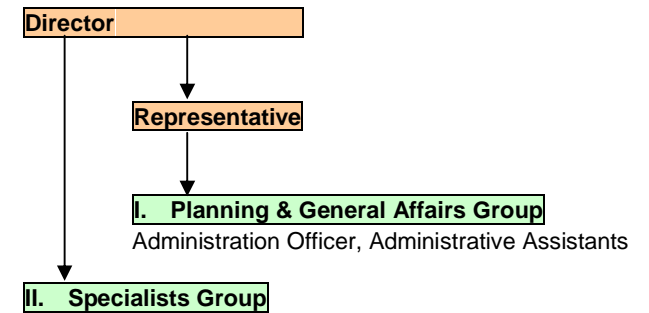


Development Fields Covered

Considering the current needs in the region, RSA has set the following main target areas:

1. Regional Integration
2. Transport
3. Energy
4. Health
5. Water Supply
6. OVOP
7. Grant Aid
8. ODA Loan
9. Regional JICA Staff Training Program
10. Asia-Africa Cooperation

Organization of the Office (as of April 2010)



- **Regional Integration**
Program Formulation Advisor
- **Transport**
Program Formulation Advisor
In-house Consultant
- **Energy**
Program Formulation Advisor
- **Health**
Program Formulation Advisor
In-house Consultant
- **Water Supply**
Program Formulation Advisor
- **OVOP**
Program Formulation Advisor
- **Grant Aid**
Program Formulation Advisor
In-house Consultant
- **Yen Loan**
Representative
- **Regional JICA Staff Training**
In-house Consultant
- **Asia-Africa Cooperation**