



Malawi Report 2006

For a better tomorrow for Malawi

Under the leadership of our President, Madam Ogata, JICA is focusing on assistance to Africa, recognising the enormous challenges that Africa is currently facing due to poverty, disease, drought and conflict. We remain hopeful for the future of Africa and its peoples, but realise that we have to intensify our efforts and that it is high time that we translate principles and policies into practice.

In this vein, JICA is strengthening the overseas offices and our assistance capacities to better focus on the needs of the recipient countries and its peoples. In Malawi, we realise that our efforts toward overcoming the development challenges facing us require creating a sense of ownership for solutions at the national and community levels and careful attention must be given to the participation and empowerment of people in the development process.

This report is a testimony of our efforts and I hope that it will provide a better understanding of our work. Let me take this opportunity to thank the people and Government of Malawi, other development partners operating in Malawi and our various partners for their cooperation and support for our contribution for a better Malawi.

Kyoji Mizutani

Resident Representative
JICA Malawi Office



JICA Malawi Report 2006

Table of Contents

1. Background

Malawi	1
JICA in Malawi	2

2. JICA Programs by Development Issue

a) Food Security

•Project on Aquaculture Research and Technical Development of Malawian Indigenous Species	4
•JICA Expert: Small-scale Irrigation Promotion in Malawi	5

b) Human Capital Development

Health	6
•JICA Expert: Health Facility Development Planning	
•Procurement of Equipment and Supplies of Maternal and Child Health (MCH) Services in Malawi	
Water	
HIV and AIDS	
•Integrated Voluntary Counseling and Testing (VCT) Services in Rumphi, Nkhata Bay and Mzimba BLM Clinics	
Education	
•JICA Expert: Education Planning Advisor	
•The National Implementation Program for District Education Plans (NIPDEP)	
•Project for the Strengthening of Mathematics and Science in Secondary Education through In-Service Training in Malawi (SMASSE-INSET Malawi)	

c) Sustainable Economic Development

•Project on Institutional and Human Resource Development for the One Village One Product Programme (OVOP)	
---	--

3. JICA Cooperation Programs

a) Japan Overseas Cooperation Volunteers

JOCV	
•Senior-Volunteer : Artificial Insemination	
•JOCV : Mathematics and Science Teacher	

b) Technical Training Program

Technical Training Program	
----------------------------------	--

Appendix

Japan ODA Project Rolling Plan in Malawi FY2004 – FY2007	
--	--

Background

Malawi

Malawi is a small landlocked country in Southern Africa with a total area of 118,484 km² of which over 20% is covered by water. It has a population of about 12.6 million people, 86% of whom live in the rural areas and more than half the population lives below the poverty line.

Malawi ranks among the world's least developed countries in the world, with a predominately agro-based economy. Agriculture accounts for nearly 40% of GDP and over 80% of export revenues.



- **Capital:** Lilongwe
- **Currency:** Malawi Kwacha
- **Major languages:** English, Chichewa, Yao and Tumbuka
- **Staple food:** Maize
- **GNI/capita:** \$170

Development opportunities and challenges

The country has fertile land with vast amounts of surface water. It is rich in wildlife and has numerous scenic locations, abundant though largely unskilled labour and it grows significant quantities of tobacco, tea, coffee, sugar and cotton.

Malawi does face formidable difficulty in sustaining the good welfare of its people including, food insecurity, inadequate health facilities, limited educational opportunities, insufficient human resource capacity, the HIV/AIDS pandemic and declining prices for its traditional exports on the world market.

Malawi's current leadership has demonstrated a commitment to tackling poverty through concerted efforts on good governance, prudent fiscal management, participatory development approaches and organizing development partnerships around one development strategy. Development partners include African Development Bank, Canada, European Union, Germany, Japan, Norway, Republic of China Sweden, United Kingdom, United Nations,

United States of America and World Bank, among others.

Malawi articulated its long term development perspective in the "Vision 2020", which has proceeded to implement through medium-term strategies such as the Malawi

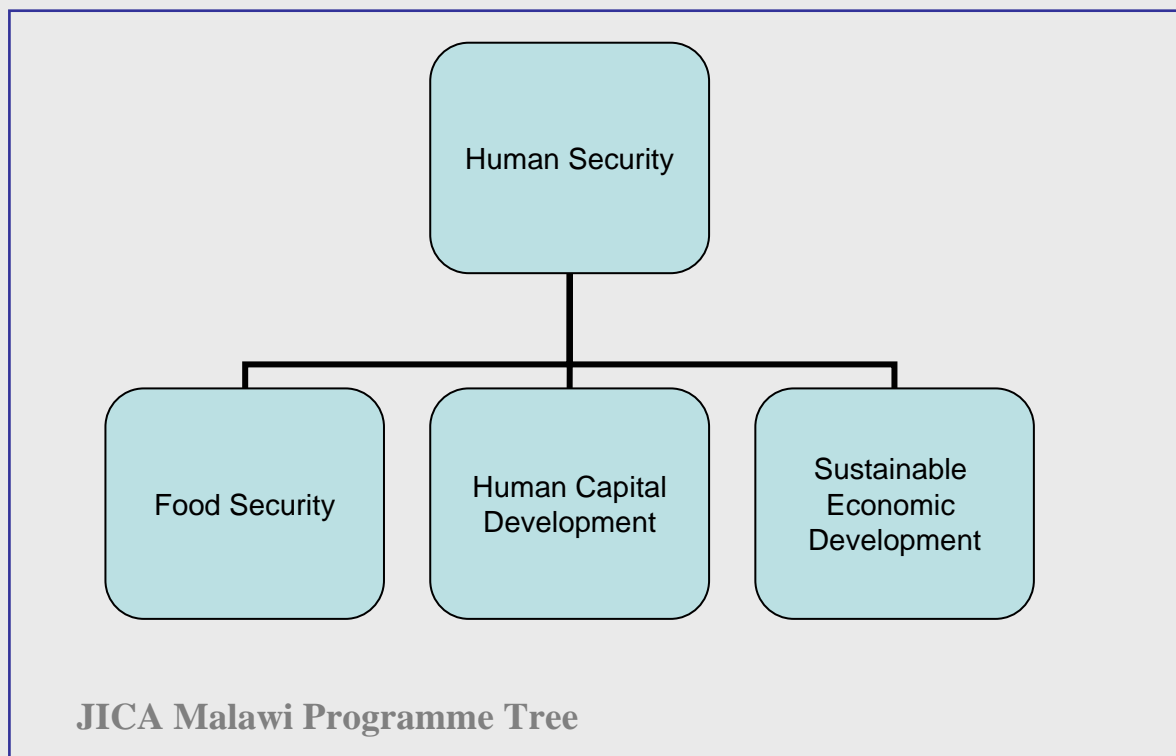
Poverty Reduction Strategy [2002-2005], and, most recently, the Malawi Growth and Development Strategy (2006-2010).

JICA in Malawi

JICA is committed to strengthen efforts to cope with threats to human lives, livelihood and dignity, and to enhance an individual's human rights and abundant potential to live a creative and valuable life, what is popularly known as a human-centred approach. This is in line with the overarching concept of Japan's ODA, promoting human security, i.e. focusing on people themselves and emphasizing self-reliance achieved through determined efforts.

JICA has been involved in Malawi's development efforts since 1971 focusing on capacity development, which involves human resource development, organizational strengthening and systems building.

The Agency has recently reorganised itself to respond more effectively and more efficiently to Malawi's development needs, targeting three core areas for cooperation: Food security, human capital development and sustainable economic development.



Food Security



Malawi derives her livelihood from her natural resources that consist of a rich and varied biophysical and climatic environment that makes it ideal for production of different crops, rearing a range of livestock species and fish. Agriculture contributes 40% to GDP, and it employs 85% of the nation's total workforce. Malawi's natural resources largely, however, remain underutilised due to use of traditional low output technologies as evidenced by reliance on rain fed agriculture (only 5.6% of potential irrigable land is under irrigation), use of unimproved livestock breeds and lack of appropriate technologies for smallholder fish farming (despite fish being a source of low-cost protein providing 60-70% of animal protein intake by the poor in Malawi).

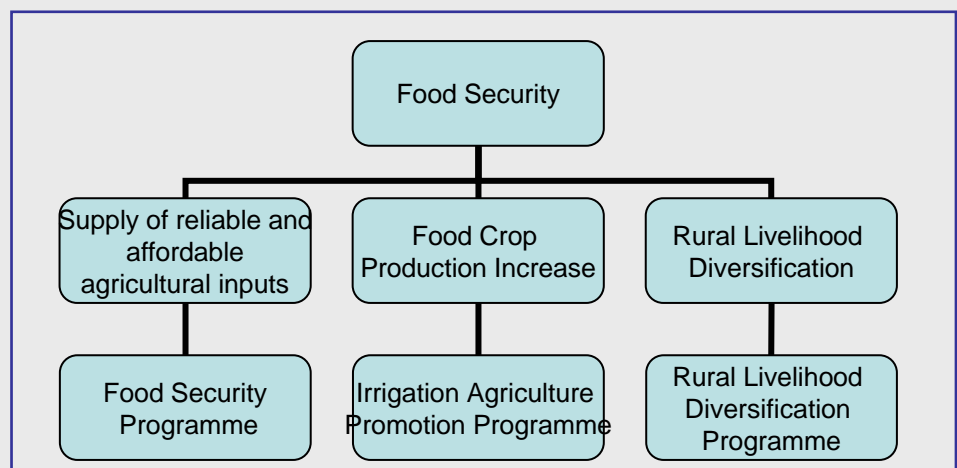
The agricultural sector, which is likely to remain in the foreseeable future, the most important engine for Malawi's economic development is beset by multiple problems including weak extension services, HIV and AIDS, inadequate markets, environmental degradation and poor water utilisation and management. Having realised these problems, the Government has put in place a number of measures aimed at reorganising the agriculture sector through development of a framework

that is aimed at harmonizing policies that have an effect on the sector.

The Malawi Government and major development partners in the sector, have embarked on implementing a Sector Wide Approach that will ensure coordination of activities and efficiency in resource allocation and programme implementation.

JICA is supporting increased production of food crops and diversification of livelihoods, focusing primarily on smallholder farmers. JICA has dispatched JOCV in the fields of artificial insemination, fruit and vegetable growing, poultry, fish-farming small-scale irrigation and community development. The following are some of the projects that JICA is providing support for:

“Eradicate Extreme Poverty and Hunger”



Project on Aquaculture Research and Technical Development of Malawian Indigenous Species

Project Outline

Background

The activity is an extension of the 2 phase project that was implemented from 1996 through 2004 intended to develop basic technology for the aquaculture of indigenous Malawian fish species such as Ntchila (*Labeo mesops*), Ningwe (*L. cylindricus*), Thamba (*Barbus litamba*) and Lake Chambo (*O. karongae*) and to establish appropriate techniques for smallholder fish farming.

Project Goal

To further develop fish farming techniques for selected indigenous species that can be easily adopted by ordinary smallholder farmers and to ensure that techniques developed are transferred and promoted to the farmers.



Target

National Aquaculture Centre (Domasi), Chingale (Zomba) and parts of Machinga

Duration

June 2004 – December 2005

Activities

- Research to select the most effective domestic species for smallholders under various living conditions
- Introducing and promoting developed techniques to selected small-holders as trial
- Conducting technical extension seminars (field days) for farmers

Outputs/Outcomes/Impacts

- Communities were economically empowered through sale of fingerlings, table-sized fish, poultry and vegetables.
- More women than men were involved in the fish farming activities, providing an opportunity for the advancement of women through aquaculture.
- The project demonstrated a high potential for integrating aquaculture and agriculture (animal manure was used for pond fertilisation and water from pond was used for irrigation of winter maize and vegetables) bringing about greater farm efficiency. This stimulated raising of livestock such as ducks and chicken with positive implications for the nutritional status of farmer households.
- The project produced farmer “experts” i.e. farmers who were involved in the construction and operation of model ponds acquired enough skills and confidence to conduct demonstrations on field days. 46 farmers and farmer clubs served as models in disseminating information to other farmers.

Way Forward

The Malawi Government and JICA are considering further collaboration to promote dissemination of the techniques developed countrywide in line with the “Presidential Initiative for Aquaculture Development (PIAD), launched in February 2006.

JICA Expert: Small-scale Irrigation Promotion in Malawi

Work Outline

Background

The Government of Malawi and JICA implemented “The Study on the Capacity Building for Smallholder Irrigation Schemes” from 2002 to January 2005 whose overall objective was to establish a package of methodologies for self-help smallholder irrigation development. The Study implemented pilot projects to verify the draft package of smallholder irrigation development and established extension mechanisms.

Goal

Promotion of actual implementation of package of smallholder irrigation development methodologies

Target

Nationwide

Duration

November 2004 – September 2005

Activities

- To grasp the results of the study and undertake research on effective means to promote the small-scale irrigation system
- To provide necessary technical and policy direction on the institutional framework to implement the programme, taking into consideration the experiences gained in the verification project
- To recommend a promotion programme to develop nationwide on the basis of the results of the study



Outputs/Outcomes/Impacts

Conclusion

Smallholder irrigation can be effectively implemented in Malawi because farmers have been able to replicate small-scale irrigation techniques by simply watching other farmers (farmer-to-farmer extension). More than 406 small scale irrigation schemes have been established throughout Malawi since the end of the Study.

Recommendations

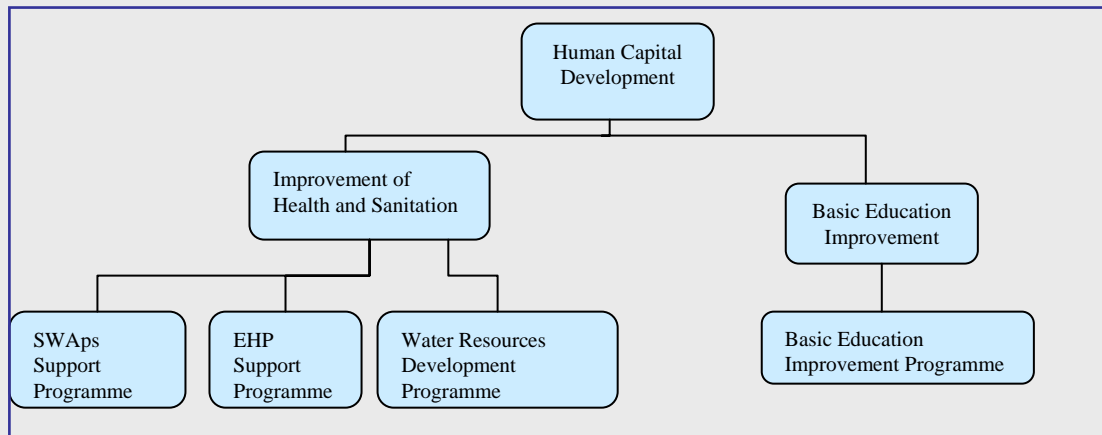
- Integrated Water Resource Management principles should be promoted to ensure balance of water use for domestic and agricultural purposes.
- Environmental protection measures should be emphasised, e.g. consistent manuring to prevent soil nutrient exhaustion and tree planting to control soil erosion.
- Training of extension staff that involves local leaders and farmers is important to promote the technologies of small-scale irrigation in Malawi
- The programme requires strong collaboration between the Ministry of Agriculture and Food Security and, the Ministry of Irrigation and Water Development.

Way Forward

The “Development of Smallholder Irrigation Scheme Technical Cooperation Project” commenced in March 2006, targeting Agricultural Extension Development Officers and farmers in 84 Extension Planning Areas nationwide. The 3 year project aims to establish a nationwide extension system for small-scale irrigation farming.

Human Capital Development

Malawi recognises that a healthy and educated population is requisite for achieving sustainable economic growth and realises the interrelated nature of issues regarding education, health, and HIV and AIDS in achieving this goal. JICA has committed itself to supporting the Government of Malawi in developing human capital to allow Malawians to fully participate and benefit in the socio-economic development of the country.



Health

Access to essential health services by the majority of the people in Malawi is constrained by a very high burden of disease mainly due to preventable diseases and conditions such as malnutrition and poor sanitation, a critical shortage of staff, poor physical infrastructure, insufficient and obsolete equipment and inadequate capacities to formulate policy, coordinate implementation, monitor progress and adequate support district health services, among other things.

Malawi began to implement the Sector Wide Approach (SWAp) in the Health Sector in 2004 to improve the management of health services delivery. The Ministry of Health and its collaborating partners commonly agreed to a Joint Programme of Work (POW) that was built around the provision of an Essential Health Package (EHP). The EHP is designed to offer a limited but effective range of priority health services that tackle the major causes of mortality and morbidity in Malawi including, malaria, diarrhoeal diseases, acute respiratory infections and diseases associated with HIV and AIDS, with particular emphasis on the poor, women and children who are most affected.

The Health SWAp desires to bring consistency between national plans, external support, sustainability and commitment of the Government of Malawi and collaborating partners to the delivery of the EHP. The SWAp is inclusive and allows for improved coordination through common planning, disbursement and accounting requirements, monitoring and reporting arrangements. JICA is contributing to the SWAp by making available expertise to assist in strengthening of the Monitoring and Evaluation of the Health POW, as well as expertise to facilitate the development of district health capital investment plans. JICA dispatches volunteers in public health, pharmacy and laboratory technology. JICA is also providing equipment to improve maternal and child health service delivery. The following are some of the projects that JICA supports:

JICA Expert: Health Facility Development Planning

Work Outline

Background

The Ministry of Health (MoH) embraced the notion of Sector Wide Approach (SWAp) in 1998. The 6-year Programme of Work (POW) was formulated in 2004, outlining the priority health activities to be implemented by the MoH, collaborating partners and NGOs, as well as describing the strategies and resource implications for these activities. JICA's Health Facility Development Planning expert has been a part of a series of technical inputs for the POW and health SWAp that necessarily addresses issues of equity and access in health.

Goal

To assist the MoH to analyse, prioritise, assess and put in order different variables using an evidence based approach that is geographical information.

Target

Ministry of Health, Health Services Planning Department

Duration

2002 – May 2006

Activities

- Draft the National Health Capital Investment Plan in close consultation with the MoH and other stakeholders
- To conduct supplementary workshops on District Capital Investment Plan, where appropriate.
- To draw up a road map to operationalise the capital investment plan



Outputs/Outcomes/Impacts

The National Health Facility Atlas was produced in 2003 from the Health Facility Inventory Survey. The Atlas is already utilised as a tool for capital investment planning in the health sector.

Way Forward

The Capital Investment Plan is expected to be finalised by end of 2006 and then stakeholders particularly MoH, development partners and officers at district level will be sensitised on the plan.

Procurement of Equipment and Supplies of Maternal and Child Health (MCH) Services in Malawi

Project Outline

Background

The status of reproductive health in Malawi ranks among the lowest in Sub-Saharan Africa. The total fertility rate stands at 6.0, under-5 mortality rate is at 133 per 1000 live births, infant mortality rate is 76 per 1000 live births and the maternal mortality ratio stands at 984 per 100,000 live births. The Reproductive Health Programme aims at reducing the maternal mortality ratio to fewer than 600 per 100,000 live births and reducing the total fertility rate to 4.9 by 2012 as well as increasing the proportion of pregnant women assisted by skilled attendants at delivery. The equipment will contribute to the prevention of maternal death through the provision of essential obstetric functions requiring treatment. The Project is a collaboration between JICA, UNICEF and the Reproductive Health Unit of the Ministry of Health.



Project Goal

Provide equipment for the expansion of Reproductive Health Services and replacement of obsolete equipment.

Target

Nationwide

Duration

April 2005 to March 2010

Activities

Procurement and supply of maternal and child health equipment

Outputs/Outcomes/Impacts

Procurement and distribution of maternal and child health equipment sets for Mulanje, Thyolo, Chikwawa, Nsanje, Mwanza and Blantyre districts (Zone 1) for 2005/6.

Way Forward

Procurement and distribution of equipment sets for Kasungu, Ntchisi, Dowa, Salima and Nkhotakota districts (Zone 2) is under preparation for 2006/7.

Water

20% of Malawi's land area is covered by water and groundwater sources are widespread throughout the country. However, rapid population growth has increased demand for water for domestic consumption, agriculture, industry, power, transport and other uses. In addition, these water resources are being continuously threatened from climate change, over-utilisation, pollution, misuse and environmental degradation. Malawi is striving to set up appropriate environment for water resources management that adequately and strategically promotes the realisation of maximum

“Provide sustainable access to safe drinking water”

social and economic benefits from its water. Equitable access to safe and potable water is a clear priority.

JICA is concentrating its effort at developing groundwater sources, particularly in rural areas. We are assisting in the implementation of the Lilongwe West Groundwater Development Project, which will see close

to 140,000 people accessing safe water from 269 boreholes to be constructed by 2007.

The Project is funded by the Government of Japan.



HIV and AIDS

In Malawi, it is estimated that over 900,000 people are HIV positive, with close to 80,000 succumbing to AIDS-related deaths every year. Some 500,000 children are orphaned also as a direct result of AIDS-related deaths, overburdening the traditional extended family coping mechanisms. Illnesses, including a threefold increase in HIV-related TB cases have placed enormous strain on the national health service system and resources. Life expectancy has fallen to 34 years. Productivity in agriculture, industry and government and private organisations is falling as absenteeism due to ill-health and consequent loss of labour or the diversion of labour to care provision threatens food security and income, forcing those already poor into greater poverty.

“Combat HIV and AIDS”

The Malawi National HIV/AIDS Policy was launched in 2005 and a National HIV/AIDS Action Framework (NAF), which is expected to galvanise an expanded, multi-sectoral, national response to the epidemic for the period 2005 to 2009, was also developed. The NAF is a fundamental reference point for all stakeholders involved in the national response to HIV/AIDS and identifies eight priority areas including prevention and behaviour change, treatment, care and support, impact mitigation and, national policy coordination and programme planning.

JICA is supporting a Voluntary and Counselling Project in 3 districts in northern Malawi and has dispatched volunteers in HIV/AIDS control, youth activities, nutrition and community development as a contribution to the NAF.

Integrated Voluntary Counseling and Testing (VCT) Services in Rumphi, Nkhata Bay and Mzimba BLM Clinics

Project Outline

Background

In Malawi it is estimated that around 14% of people of reproductive age (15-49 years) are HIV positive, with new infections tending to be concentrated in the younger age groups and young women being disproportionately affected. The majority is still unaware of their infection status. Voluntary Counselling and Testing (VCT) for HIV is advocated on the premise that it provides opportunity for behaviour change, preventing further infection and giving an entry point for infected individuals to care, treatment (where available) and support. VCT programmes have been shown to be an effective means of raising awareness about how to prevent transmission of HIV and AIDS and ensuring improved survival and quality of life for those already infected.

Project Goal

To increase awareness on sero-status and utilisation of quality VCT services by women, men and young people in the catchment areas of 3 BLM clinics in the Northern Region.

Target

Rumphi, Mzimba and Nkhata Bay Districts

Duration

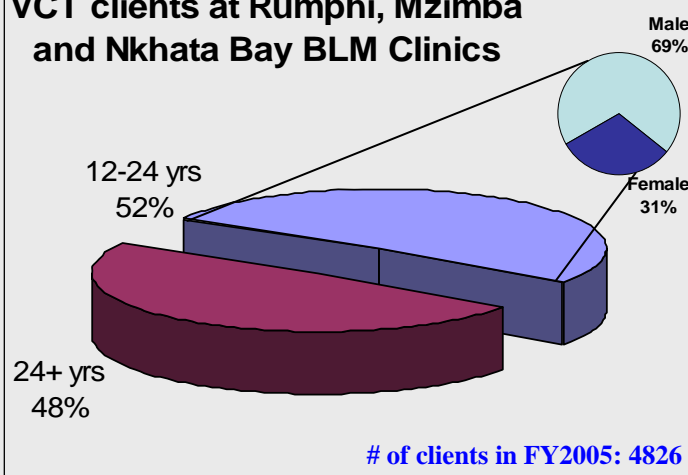
2004 to 2008

Activities

- Pre-test counseling on HIV and AIDS as well as other STIs
- Testing for HIV and syphilis
- Post-test counseling and where necessary, referral to other health service providers for further care



VCT clients at Rumphi, Mzimba and Nkhata Bay BLM Clinics



Outputs/Outcomes/Impacts

- 6 VCT counsellors recruited and trained
- 4,826 clients counselled and tested
- 496 clients referred for further management

Way Forward

Review the community outreach strategy to encourage more young women and girls to access VCT services.

Education

Malawi adopted the Free Primary Education Policy in 1994 aimed at increasing access to basic education. While there was a marked improvement in pupil enrolment at primary school from 1.8 million to 3 million, the implementation of the policy led to severe challenges with regard to the quality of primary and secondary education evidenced in acute shortages of classrooms, textbooks, education materials and qualified teachers. The Government of Malawi was forced to recruit about 11,000 under-qualified teachers as an emergency stop-gap measure, but this had adverse impacts on the quality of education in the country.

“Improvement of the Quality of Primary and Secondary Education”

A roadmap has already been drawn up. JICA is contributing to the education sector by providing expertise in planning at Ministry of Education Headquarters, assisting in strengthening of Mathematics and Science education through an In-Service Training Program and dispatch of Maths and Science teacher volunteers, as well as supporting formulation and implementation of district education plans as part of the National Decentralisation

The Government of Malawi and several collaborating partners organised a Policy and Investment Framework that was formulated to improve issues of access, quality, equity and relevance to basic education. In 2004, the Ministry of Education and development partners drafted an Education Sector Plan (Basic and Secondary) that would promote effective delivery of quality services. The Sector Plan is expected to lay the groundwork for a Sector Wide Approach (SWAp).



Programme. The following are summaries of some of the activities JICA is supporting in the education sector:

JICA Expert: Education Planning Advisor

Work Outline

Background

The Government of Malawi has been promoting education development focusing on basic education since the introduction of free primary education in 1994. The need for enhanced education planning capacity was identified as a precondition for employing a Policy Investment Framework to achieve the national targets for educational development. In response to this, JICA has been sending Education Planning Advisors to the Ministry of Education since 1999.

Goal

To improve planning capacity in the Ministry of Education

Target

Ministry of Education Headquarters

Duration

2005 to 2007

Activities

- Education planning capacity development: to assess current conditions to identify development needs and develop required activities and to assist their execution,
- Coordination among developing partners: to identify means for coordination and to assist their implementation,
- Improvement of the overall sector performance: to identify performance improvement measures and to assist taking remedial measures.

Outputs/Outcomes/Impacts

- Individual as well as institutional capacity development needs are being identified, and the required activities are being proposed to the Ministry for consideration and execution.
- Through participation in meetings and consultations between the Ministry and developing partners, coordination is maintained and strengthened.
- Performance improvement measures are studied and proposed in such issues as inspections, directions of national primary education administration and management in the context of decentralisation, and measures to be taken for strengthening mathematics and science in secondary education.

Way Forward

The expert will continue to work closely with the Ministry and various developing partners for improvement of the sector performance, taking into account especially the context of decentralization and institutional capacity development.



The National Implementation Program for District Education Plans (NIPDEP)

Project Outline

Background

The National Implementation Program for District Education Plans (NIPDEP) is a follow-up of the “National School Mapping and Micro-Planning Project” implemented from 2000 to 2002, whose aim was to enhance the capacity of district education officers in planning and led to the formulation of 3-year District education Plans (DEPs) for all 33 education districts in the country. NIPDEP was prepared to establish a sustainable system to utilise, update, implement and institutionalise DEPs.

Project Goal

Build capacity in planning and implementation of District Education Plans of the central and local education officers in the context of the National Decentralisation Plan.



Target

Nationwide

Duration

February 2003 to September 2005

Activities

- Update District education plans
- Implement and monitor verification projects
- Develop the National District Education Development Plans (NDEP)

Outputs/Outcomes/Impacts

- 33 District Education Plans updated
- The National District Education Plans prepared
- The capacity among the pilot district education officers was improved in data management, project planning, implementation, monitoring and financial management, which also enhanced their confidence, competence and leadership in education improvement in their districts. The pilot districts were Nkhata Bay, Mchinji, Ntchisi, Machinga, Thyolo and Nsanje.
- NIPDEP trained the district officers in planning and project management, who will play a key role under the decentralisation system, which contributes to the Government of Malawi’s Decentralisation Policy.

Way Forward

- The budget flow from the Ministry of Education to the districts under the decentralisation policy needs to be fully implemented and enhanced by the Government of Malawi in order to make full use of the NIPDEP outputs.
- The Government of Malawi and JICA have agreed to continue with a Post-NIPDEP project which will focus on strengthening budgeting processes at district level and linking those with processes at the centre.

Project for the Strengthening of Mathematics and Science in Secondary Education through In-Service Training in Malawi (SMASSE-INSET Malawi)

Project Outline

Background

The SMASSE-INSET Malawi Project was designed to improve methodology and subject content in the teaching and learning of science and maths that address the issues of poor performance and negative attitudes by both teachers and students to the maths and science subjects. The INSET approach has been proven to be a cost-effective and feasible means to achieving improvement in student's ability in maths and science. The INSETs are formulated to emphasise on an Activity-focused, Student-centred, Experiment and Improvisation (ASEI) approach coupled with an operational and monitoring and evaluation principle dubbed PDSI (Plan, Do, See and Improve). The subjects concerned are Maths, Physical Science, Biology and Home Economics.

Project Goal

The quality of teaching maths and science is improved in secondary schools in Malawi

Target

South East Education Division (Balaka, Machinga, Mangochi and Zomba)

Duration

October 2004 – September 2007

Activities

- Train Core Trainers for cluster-level INSETs
- Equip selected INSET centers and other schools with minimum standard of materials necessary for INSET
- Train secondary math/science teachers at cluster-level INSET
- Strengthen leadership at school, divisional and ministry level in terms of INSET administration through training and other awareness activities.



Outputs/Outcomes/Impacts

- 35 core trainers have been trained in Kenya and Malawi in the fields of INSET planning, curriculum development, facilitation and administration based on the (ASEI) approach.
- Education officials from Ministry Headquarters and SEED have been on a study tour the SMASSE-INSET in Kenya, which has been successfully implemented with the support of JICA since.
- 3 INSET centers have been established at Mulunguzi, Balaka and Lusubwi Secondary schools where 301 maths and science teachers from all the 96 secondary schools in the division participated in the first INSET conducted in December 2005.
- Teachers' attitudes towards maths and science have reportedly improved and participating teachers expressed that they were more confident to handle lessons in the relevant subject matter.

Way Forward

The Ministry of Education is currently developing an INSET policy that is expected to guide regularisation of INSET activities in Malawi, drawing upon lessons and experiences from SMASSE activities.

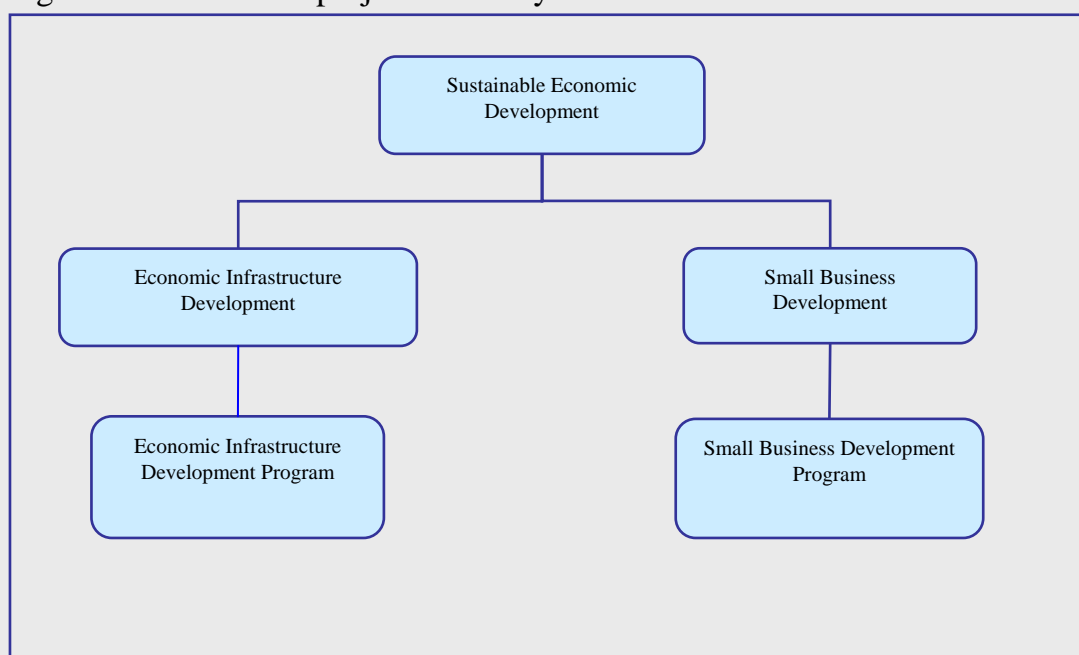
Sustainable Economic Development

The Government of Malawi has come up with the Malawi Growth and Development Strategy 2006-2010(MGDS) as a successor to the MPRS. The MGDS seeks to achieve sustainable economic growth and wealth creation in order to bring about the well-being for all Malawians with particular emphasis on infrastructure development and good governance. The aim is to strike an appropriate balance between investments in economic growth and social services. The MGDS looks at Sustainable Economic Growth, Social Protection and Disaster Management, Social Development, Infrastructure and Good Governance. JICA recognises that developing the production environment is indispensable for boosting economic activity and that it is difficult to achieve economic growth for society as a whole without infrastructure that links resources with productive activity as well as markets. Infrastructure also provides supplementary support for human capital development.

***“Sustainable
Economic Growth and
Wealth Creation”***

JICA conducted the Basic Design Study for the Reconstruction of 3 Bridges on the M5 Road between Balaka and Salima that were damaged by flooding in 2002. The Reconstruction Project is now underway with funding from the Government of Japan under JICA’s supervision. JICA is also supporting implementation of the Malawi Rural Electrification Program (MAREP).

In 1998 JICA introduced the One Village One Product (OVOP) to Malawi by facilitating training programmes in Japan for officers from various Ministries. Malawi has since embraced the OVOP concept as the core model for rural transformation through integrated rural development initiatives. With support from JICA a National Secretariat has been established to promote and coordinate OVOP activities. The following is a more detailed project summary:



Project on Institutional and Human Resource Development for the One Village One Product Programme (OVOP)

Project Outline

Background

The One Village One Product (OVOP) movement was initiated 25 years ago in Oita Prefecture, Japan, as a means to promote regional revitalization. It is an innovative programme under which local communities identify one or a few locally unique products, concentrate resources on its production, establish it as a local brand, and sell it to the domestic market or beyond. The Government of Malawi has embraced the OVOP concept as one of its main programmes to reduce poverty and engineer economic growth to transform the lives of Malawi's largely rural population.

Project Goal

Institutional capacity and human resources of OVOP Secretariat and other related institutions are developed to create sound environment for communities to start business activities using locally available resources for higher quality products and services.



Target

OVOP Secretariat, related support institutions for OVOP and OVOP groups

Duration

October 2005 – October 2010

Activities

- Establish OVOP operational plan and evaluation mechanisms including those for project screening, funding and product marketing
- Formulate and execute a training programme on

OVOP concepts as well as small-scale business management and agro-processing technology

- Establish concepts of model cases in business management and agro-processing together with conducting verification of model projects.
- Setting up an OVOP information collection and dissemination mechanism

Outputs/Outcomes/Impacts

- District Planning Officers have been trained to offer technical assistance in project development and implementation to prospective OVOP beneficiaries through planning workshops that sensitised the Officers on OVOP in general and the criteria for screening proposals for OVOP activities.
- The OVOP secretariat has already developed Operational Manual and Guidelines for OVOP in Malawi and produced a video documentary featuring OVOP projects and potential areas for support.

Way Forward

- It is recognised that the OVOP programme cannot be sustained by the Government of Malawi and JICA alone. Therefore, concerted efforts will be made to link OVOP to existing micro-business initiatives and micro-financing opportunities.
- The Secretariat has taken on board a Japanese Expert on Micro-finance, a volunteer Web and Internet Designer and, a short-term Business Management volunteer in March 2006 and the programme should now begin in earnest.

Japan Overseas Cooperation Volunteers



JOCV

Japan Overseas Cooperation Volunteers (JOCV) is a programme administered by JICA and provides technical assistance focusing on human resource development that enables developing countries to pursue their own social and economic development programmes in a sustainable manner.

Inaugurated in 1965, JOCV is one of the principal programmes of JICA. JOCV volunteers are trained and qualified professionals in a variety of technical disciplines who work at the local level in recipient countries

in order to best meet host country needs.

JOCV prides itself in promoting direct cooperation with local people in development efforts. Assistance at the local level deepens understanding of cultures and traditions and builds genuine friendships between volunteers and hosts.

JOCV has been in Malawi since 1971, starting with 7 volunteers in the fields of fisheries development, civil engineering and machine maintenance and operation. In the last 35 years, Malawi has hosted over 1300 volunteers in the fields of infrastructure development, education and sports, health, agriculture and rural development, vocational training, information technology management and others.

There are 2 major volunteer schemes, Japan Overseas Cooperation Volunteers (ages 20 to 39) and, Senior Overseas Volunteers (ages 40 to 69).

Statistics Number of JOCVs in
Malawi
(FY2005)

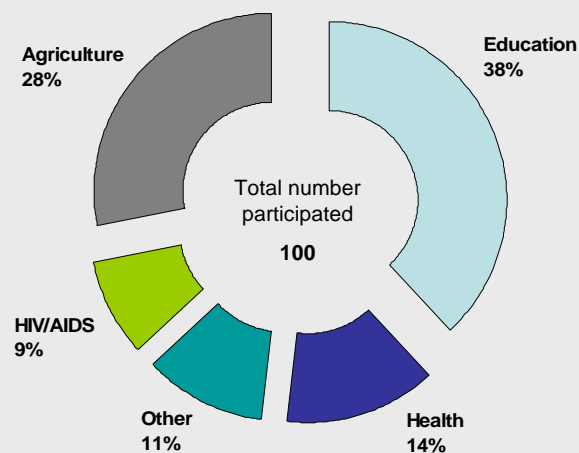


Figure includes Senior JOCV and Senior volunteers

Senior-JOCV : Artificial Insemination

Work Outline

Background

The population of cattle in Malawi is not enough to meet the demand for meat and dairy products' and productivity of cattle is very low. The Government of Malawi hopes to increase livestock production to meet domestic demand and decrease livestock imports. JICA has been working in collaboration with the Department of Animal Health and Livestock Development to promote artificial insemination in cattle in Malawi since 1995. Artificial insemination is expected to increase the productivity of cattle nationwide.



Goal

Artificial insemination services are delivered

Target

Nationwide

Duration

November 2003 – November 2006

Activities

- To improve artificial insemination services in Malawi
- To facilitate and coordinate JOCV volunteer activities in livestock production

Outputs/Outcomes/Impacts

- 21 government officers have been trained as artificial insemination technicians while 5 government officers and 6 farmers have qualified as pregnancy diagnosis technicians also through training.
- 300 copies of the Dairy Cow Management Handbook were published and distributed to both government and farmer technicians.
- Training equipment for artificial insemination has been procured.
- Farmer Artificial Insemination Technicians Foster Project has been drafted.
- Cattle semen for artificial insemination can now be produced and frozen for utilisation in Malawi.
- Progeny tested bull was imported from South Africa.

Way Forward

- Support system of distribution of frozen semen and liquid nitrogen by the Government should be strengthened.
- Farmer training in artificial insemination and pregnancy diagnosis is necessary. The Farmer Artificial Insemination Technicians Foster Project, with JICA's support is expected to launch. The project aims at training about 86 farmer artificial insemination technicians to deliver artificial insemination services to fellow farmers.

JOCV : Mathematics and Science Teacher

Work Outline

Background

Malawi does not have enough qualified teachers for secondary school Mathematics and Science. Subjects often perceived as difficult. This has resulted in pupils performing poorly in the subjects or shunning them altogether. JICA supports efforts by the Government of Malawi to promote the teaching and learning of science subjects by dispatching JOCV mathematics and science teachers to secondary schools throughout the country.

Goal

Promote the teaching and learning of mathematics and science subjects

Target

Nationwide

Duration

On-going

Activities

- Teach mathematics and science
- Develop workbooks to simplify the teaching and learning of science subjects
- Share teaching skills and methodologies with counterparts
- Facilitate maths and science competitions between schools



Outputs/Outcomes/Impacts

- 3 Maths and science competitions among schools were conducted and attracted great interest from pupils.
- Teaching maths and science by promoting pupil participation through demonstrations and active application to daily life motivated more pupils to enroll for science subjects.
- This teaching approach also enhanced the acquisition of knowledge and skills in maths and science by pupils.

Way Forward

Priority for dispatch of Maths and Science JOCV will be South East Education Division (Mangochi, Balaka, Machinga and Zomba) in line with JICA's efforts to promote greater synergy among its programmes. The Maths and Science JOCV will complement the activities of the SMASSE-INSET Project.

Technical Training Program

Technical Training Participants Programme provides key administrators, technicians and researchers in Malawi opportunities to share and learn knowledge and technology required in Malawi.

As of fiscal year 2004, 999 officers from various Government Ministries and departments, parastatal organisations and Non-Governmental Organisations throughout Malawi have benefited from the training programmes in Japan as well as other countries. The benefits of implementing this program in Japan include:

- Participants are able to see how new techniques and ideas not yet available in Malawi are applied
- Japan's experience is shared, and
- Participants have the chance to exchange ideas and experiences with colleagues from other countries that are facing similar issues.



JICA has recently initiated a long-term training programme that accepts foreign students who wish to acquire graduate degrees in Japanese universities with the aim of acquiring more advanced and specialized knowledge and skills. Participants are selected based upon requests from government affiliated organisations. Malawians have benefited from training opportunities

in Health, Education, Agriculture, ICT, Television and Radio and, Development Planning.

Appendix

Japan ODA Project Rolling Plan in Malawi FY2004 – FY2007