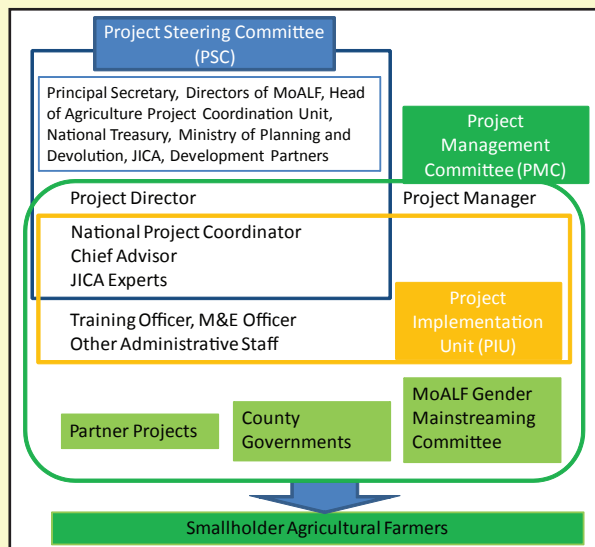


Project Organizational Structure



PEGRES is managed through Project Steering Committee (PSC) which gives guidance on policy matters and approves work plans and budgets, Project Management Committee (PMC) is charged with technical issues while Project Implementation Unit (PIU) is charged with overseeing day-to-day activities of the project.



Introduction of MoALF

The operations of the Ministry are guided by Vision, Mission and Core Values.

Vision : Secure and wealthy nation anchored by an innovative, commercially oriented and competitive agricultural sector.

Mission : To improve the livelihood of Kenyans and ensure food and nutrition security through creation of an enabling environment and ensuring sustainable natural resource management.

Core Values : Professionalism, Integrity, Efficiency and Responsiveness, Partnerships and Gender Equity.

Introduction of JICA

JICA assists and supports developing countries as the executing agency of Japanese Official Development Assistance (ODA). In accordance with its vision of "Inclusive and Dynamic Development", JICA supports the resolution of issues of developing countries by using the most suitable tools of various assistance methods and a combined regional-, country- and issue-oriented approach.

PEGRES Contact

Address: 4th Floor, Kilimo House, Cathedral Road
P.O. Box 30028-00100, Nairobi, Kenya
TEL: +254-(0)20-2718870 / (0)722-970518
E-mail: pegresmoalf@yahoo.com
pegres@kilimo.go.ke



Project on Enhancing Gender Responsive Extension Services in Kenya (PEGRES)

INTRODUCTION TO PEGRES



Technical Cooperation Project
between
**Ministry of Agriculture, Livestock and
Fisheries (MoALF)**
and
**Japan International Cooperation Agency
(JICA)**

Background Information

The Ministry of Agriculture, Livestock and Fisheries (MoALF) recognizes gender mainstreaming as key in agriculture sector development and has put in place initiatives to ensure that gender issues are integrated into policies and development programmes.

The Government of Kenya and the Government of Japan through MoALF and Japan International Cooperation Agency (JICA) signed a memorandum, for a Gender Project called, **“Project on Enhancing Gender Responsive Extension Services in Kenya (PEGRES)”** whose goal is the improvement of livelihoods of smallholder female and male farmers, pastoralists and fisher folks.

Project Duration

1st September, 2014 to 31st August, 2017 (3years)

Sources of Funds

PEGRES is jointly funded by the Government of Japan and the Government of Kenya through JICA and MoALF.

Project Purpose

Institutional capacity of MoALF at national and county levels to promote gender responsive agricultural extension services is enhanced.

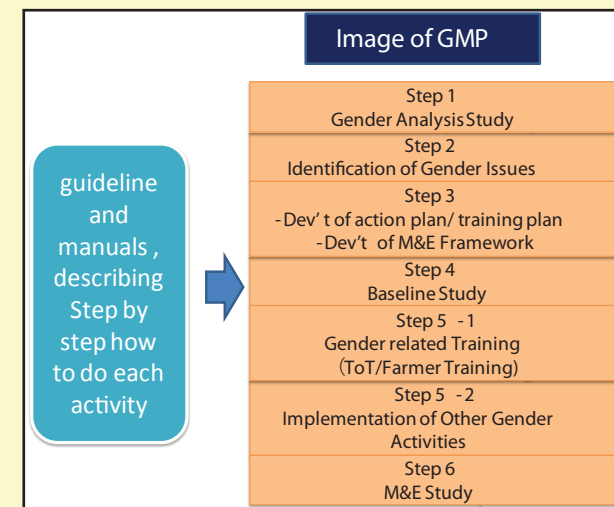
Project Outputs

1. Project Management and Coordination is Operationalised.
2. The Gender Mainstreaming Package is developed.
3. Advisory Skills, Techniques and Knowledge of MoALF and Target Counties to implement the “Gender Mainstreaming Package” in partner smallholder agricultural projects, is improved.
4. The Gender Mainstreaming Package is introduced into other smallholder agricultural projects, Counties and Agricultural Training Centres.

Project Activities

PEGRES aims to contribute to the improvement of the livelihood of smallholder female and male farmers through enhanced institutional capacity of MoALF and County staff.

In light of this, PEGRES will develop a “Gender Mainstreaming Package (GMP)” which includes a series of manuals and guidelines describing how to mainstream gender at each stage of a project cycle. The project will mount a series of trainings on how to use the GMP followed by dissemination to relevant stakeholders.



GMP Development Process

In order to develop the GMP, which will serve smallholder agricultural projects dealing with various commodities, PEGRES will work with partner projects that are already implementing their activities in various Counties. While assisting partner projects to enhance their gender responsiveness in their project implementation, PEGRES will build up its experiences and knowledge to enrich the GMP contents.

