

Environmental Monitoring Report
(Construction Phase)

SEPTEMBER 2018

Monitoring Form (Construction Phase)

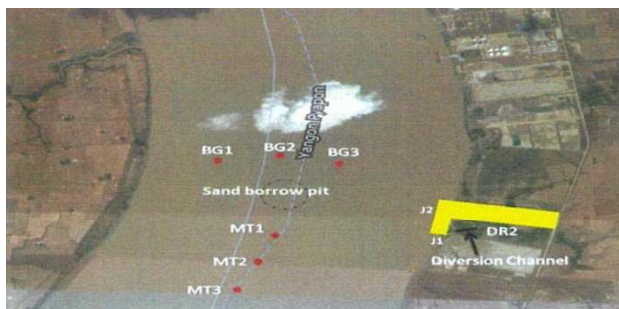
The latest results of the below monitoring items shall be submitted to JICA for **monthly basis except weekly basis of water quality** for the construction period.

– Air Quality

Item	Monitoring Result during Report Period
Countermeasures on dust prevention	5. All equipment units at site are being maintained to make sure they don't emit excessive smoke.
e. Countermeasures for air pollution on access roads (e.g. transportation route, maintenance condition of trucks, cover sheet, tire washing)	6. All ancillary materials being delivered at site coursed to existing roads are covered with sheets to protect materials from falling off the road.
f. Countermeasures for air pollution on site (e.g. maintenance condition of equipment and trucks, stock yard, water sprinkling, prohibiting engine idling)	7. All equipment units at site are being maintained to make sure they don't emit excessive smoke. 8. As it is rainy season, the contractor will not conduct the water sprinkling. 9. All equipment units at site are turned off fully when not in use.

– Water Quality

Item	Monitoring Result during Report Period
<p>1. Countermeasures for water pollution (offshore work)</p> <p>a. Monitoring result for ambient water quality, dumping site water quality, and borrow pit water quality (temperature, turbidity in SS, pH, salinity and oil & grease)</p> <p><u>Monitoring results are shown in Annex</u></p> <p>b. Countermeasures for turbid water at disposal of dredged soil to river</p> <p>c. Other countermeasure for water quality</p>	<p>Monitoring was conducted regularly on a weekly basis. For this reporting month, monitoring was conducted on 7th, 14th, 21st and 28th of September 2018 at Drainage-2 and River side. The parameters taken during monitoring were the following:</p> <ol style="list-style-type: none"> 13. pH 14. Temperature 15. Salinity 16. Turbidity 17. Suspended Solids (SS) 18. Presence of oil and grease <p>g. As of this reporting month, landfill, dredging, piling work and soil improvement work were finished, the contractor were not conducted the wastewater and ambient water quality monitoring.</p> <p>h. There are no activities at disposal area.</p> <p>i. Monitoring results for Drainage-2 and River side are shown in Annex-A. As a background point, the contractor conducts the Jetty area (J2) to compare with DR2 results. Drainage-1 and Diversion Channel are not functioned.</p>



	
<p>2. Countermeasures for water pollution (waste water)</p> <p>a. Monitoring result for waste water quality (temperature, SS, pH, salinity, and oil & grease) <u>Monitoring results are shown in Annex</u></p> <p>b. Countermeasures for preventing waste water spreading (installation of drainage ditch, etc.)</p> <p>c. Countermeasures for waste water for washing construction equipment.</p> <p>d. Condition of installation and maintenance of sanitary facilities such as temporary toilets or septic tanks.</p>	<p>No grease or oil spills was observed during monitoring.</p> <p>a. Monitoring results for waste water quality of drainage ditch and Jetty area are shown in Annex-A.</p>  <p>b. Installed the drainage ditch for preventing waste water spreading and monitoring weekly.</p> <p>c. The contractor has constructed the washing area of concrete mixer.</p> <p>d. Sanitary facilities were installed at strategic locations at site for workers to use.</p> 
<p>3. Countermeasures for water pollution (oil spill)</p> <p>a. Maintenance condition of construction equipment</p> <p>b. Other countermeasures for oil spill (e.g. contingency plan, preparation of oil fence, neutralization reagent, absorbing material)</p>	<p>All equipment presently at site is being regularly maintained. Cleaning of fuel storage area is being made. (In case of oil spill, a contingency plan prepared by the Contractor will be implemented, such as establishment of oil fence, application of neutralization agent and absorbing agent.)</p> 

Solid Waste

Item	Monitoring Result during Report Period																					
Record of Types, Volume, Management methods of solid wastes	<p>As of this reporting month, the contractor has been regularly delivering the garbage and food waste to the disposal area owned and operated by Kyauktan’s Municipal. Total volumes of waste for this month are about 70 m³.</p> <p>Site cleaning work for Plot 26, the contractor delivering the garbage to the disposal area by using two dump trucks and the volume are about 64m³. The record of oil waste and hazardous waste, recycle concrete, iron and oil are below:</p> <table><tr><th></th><th>For this month</th><th>Cumulative</th></tr><tr><td>Recycle concrete</td><td>4.5 m3</td><td>201.0 m3</td></tr><tr><td>Recycle Oil Waste</td><td>0 L</td><td>1680 L</td></tr><tr><td>Hazardous Waste</td><td>0</td><td>0</td></tr><tr><td>Recycle Iron</td><td>0 ton</td><td>27 ton</td></tr><tr><td>Organic</td><td>70 m3</td><td>2408 m3</td></tr><tr><td>Plot 26 Site Cleaning</td><td>64.0 m3</td><td>4039.67 m3</td></tr></table> <div><p>အချို့ကိစ္စများကို အောက်ဖော်ပြပါအတိုင်း ဆောင်ရွက်ထားပါသည်။</p><p>ဟင်္သာစား (၀၉-၀၅-၂၀၂၀)</p><p>အချို့ကိစ္စများကို (၀၉-၀၅-၂၀၂၀)</p><p>အချို့ကိစ္စများကို (၀၉-၀၅-၂၀၂၀)</p></div> <div></div>		For this month	Cumulative	Recycle concrete	4.5 m3	201.0 m3	Recycle Oil Waste	0 L	1680 L	Hazardous Waste	0	0	Recycle Iron	0 ton	27 ton	Organic	70 m3	2408 m3	Plot 26 Site Cleaning	64.0 m3	4039.67 m3
	For this month	Cumulative																				
Recycle concrete	4.5 m3	201.0 m3																				
Recycle Oil Waste	0 L	1680 L																				
Hazardous Waste	0	0																				
Recycle Iron	0 ton	27 ton																				
Organic	70 m3	2408 m3																				
Plot 26 Site Cleaning	64.0 m3	4039.67 m3																				


— Noise and Vibration

Item	Monitoring Result during Report Period
1. Countermeasures for noise and vibration on access roads. (e.g. transportation route, maintenance condition of trucks, cover sheet, tire washing)	-As of latest month, almost all materials are coursed through existing roads. -Making sure that delivery trucks are not loaded beyond their capacity.
2.Countermeasures for noise and vibration on site (e.g. maintenance condition of equipment and trucks, refraining noisy construction works in night time, prohibiting engine idling)	-Checking the condition of equipment and trucks. -Refraining noisy construction works in night time.



— Sediment

Item	Monitoring Result during Report Period
1.Record of sediment quality monitoring <u>before and after dumping</u> (Specific gravity, Water content, Grain size, TOC, Arsenic, Cadmium, Chromium, Lead, Copper, Nickel, Zinc, DDT)	As of this reporting month, dumping activities at disposal area have been completed.
2.Record of land filling material monitoring before land filling (Arsenic, Cadmium, Lead, Cyanide)	The heavy metal contents of the materials have been tested prior to material use at the site. Heavy metal content tested are the following: 9. Arsenic 10. Cadmium 11. Lead 12. Cyanide All results of the testing conducted shows that heavy metal contents as enumerated above are below the criteria set for in the specifications.

— Fishery Activity

Item	Monitoring Result during Report Period
Consideration for fishery activities	During the reporting month, there are no fishing activities near the construction area. 

— Infectious diseases such as HIV/AIDS

Item	Monitoring Result during Report Period
Achievement of education for construction workers on prevention against infectious disease.	<p data-bbox="707 342 1311 495">During the reporting month, the contractor conducted the 14th HIV Local Session on 13th September 2018 and 15th HIV Local Session on 27th September 2018. The contractor kept distributing the condoms and pamphlets during reporting month.</p> <div data-bbox="730 517 1302 1084"> <p data-bbox="746 517 922 544">14th Local Session</p>  <p data-bbox="746 808 922 835">15th Local Session</p>  </div>

— Work Environment

Item	Monitoring Result during Report Period
Achievement of safety management plan to comply with safety standards for project site (e.g., safety training, periodical safety patrol, or safety meeting, etc.)	<p data-bbox="707 1274 1308 1485">All employees including the subcontractors' workers within their first date of joining the project undergo safety induction training and maintain up-to-date records and summary of all safety training and group discussions for all employees engaged in the Project. The contractor conducted Safety Patrol on 14th September and Safety Meeting on 28th September 2018.</p> <div data-bbox="707 1507 1300 1933"> <p data-bbox="722 1525 981 1552">Safety Induction Training</p>  </div>

Monthly Safety Meeting



Daily Toolbox meeting and exercise



Monthly Safety Patrol



— Accidents

Item	Monitoring Result during Report Period
<p>Achievement of traffic safety management plan to comply with on-land and marine traffic regulation/rules for project (e.g., providing fence, sign board, or off-limits area of outsiders, and arrangement of guardsman or security boat, etc.)</p>	<p>The traffic safety management plan has been incorporated in the safety and security plan of the project. The contractor constructed the fence along the riverside to avoid entering the strangers. On this note however, no traffic accidents, on-land or water, has been encountered as of this reporting date.</p> <p>Traffic Control Plan</p>

Annex-A

Weekly Monitoring Results for Water Quality

(7th, 14th, 21st and 28th of September)

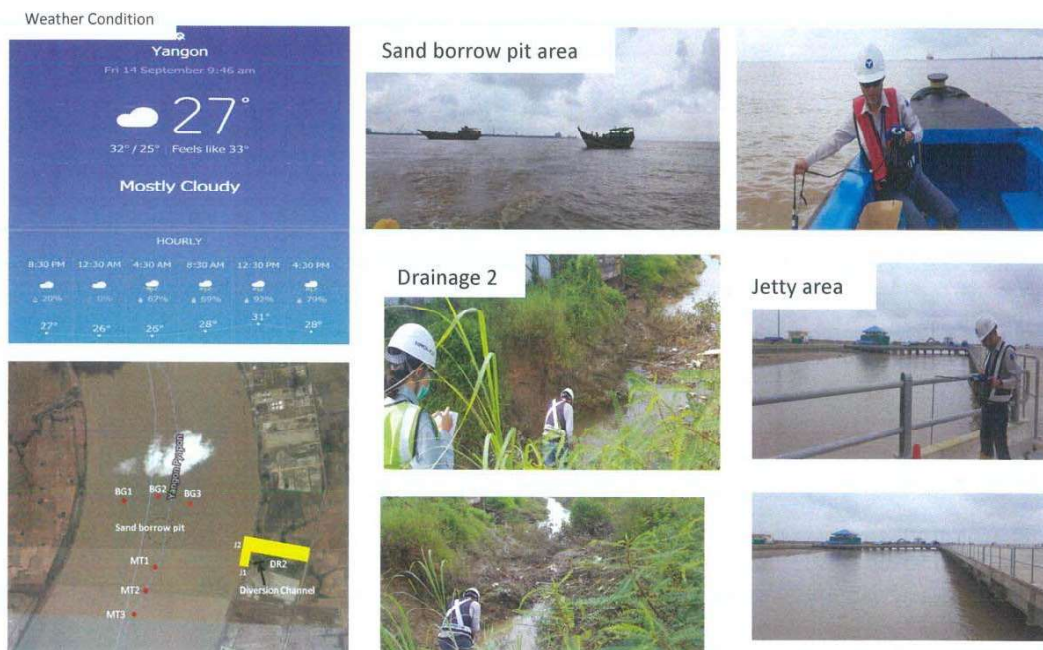
Environmental Monitoring (7th September 2018)



Area		Site Internal Monitoring		
Location		DR2	J2	Diversion Channel
TIME		08:25	08:40	-
pH		7.54	7.81	-
Temperature	°C	27.1	27.8	-
Salinity	%	0.24	0.00	-
Turbidity	NTU	278.6	238.9	-
SS	mg/l	328.7	281.9	-

Note: The contractor will not conduct the Drainage 1 and Diversion Channel due to site condition.

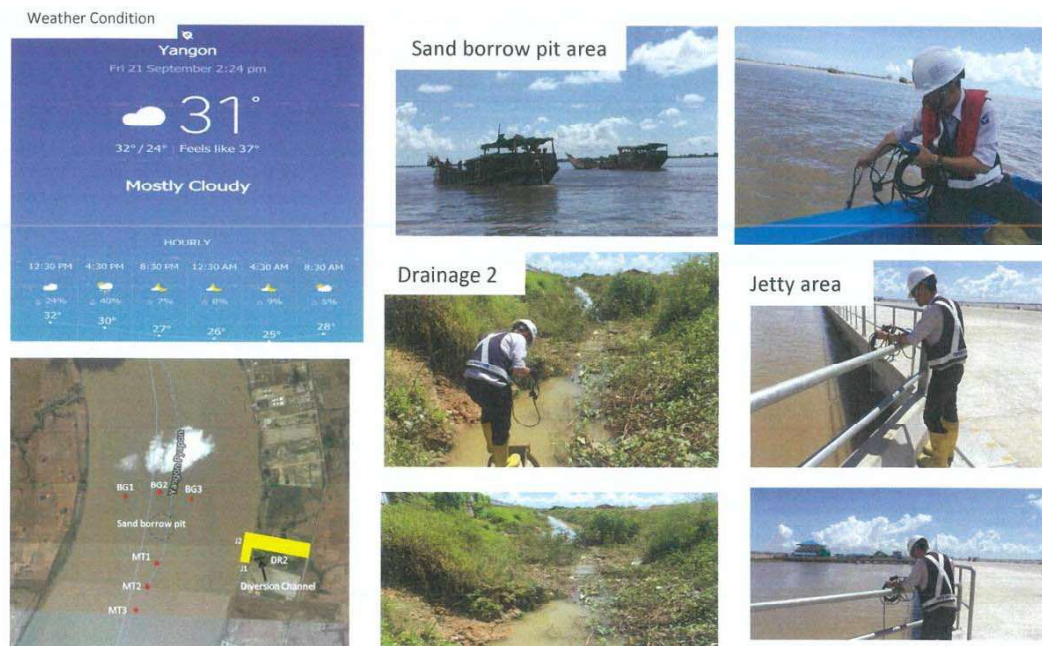
Environmental Monitoring (14th September 2018)



Area		Construction Area					
Location		DR2			River Side		
TIME		09:37			09:45		
pH		7.16			7.42		
Temperature	°C	28.7			29.2		
Salinity	%	0.23			0.00		
Turbidity	NTU	377.0			375.6		
SS	mg/l	444.9			443.2		
Area		Sand borrow pit					
Location		BG1	BG2	BG3	MT1	MT2	MT3
TIME		08:45	08:50	08.55	09:00	09:05	09:07
pH		7.82	7.66	7.54	7.50	7.43	7.39
Temperature	°C	29.2	29.2	29.2	29.2	29.2	29.2
Salinity	%	0.00	0.00	0.00	0.00	0.00	0.00
Turbidity	NTU	486.6	436.6	419.6	433.8	441.9	417.3
SS	mg/l	574.2	515.2	495.1	511.9	521.4	492.4

Note: The contractor will not conduct the Drainage 1 and Diversion Channel due to site condition.

Environmental Monitoring (21st September 2018)



Area		Construction Area					
Location		DR2			River Side		
TIME		13:25			13:35		
pH		7.51			7.89		
Temperature	°C	35.6			29.7		
Salinity	%	0.18			0.00		
Turbidity	NTU	139.1			197.8		
SS	mg/l	164.1			233.4		
Area		Sand borrow pit					
Location		BG1	BG2	BG3	MT1	MT2	MT3
TIME		13:51	13:52	13:53	13:57	13:59	14:01
pH		7.63	7.44	7.37	7.34	7.38	7.24
Temperature	°C	30.9	30.6	30.6	31.5	31.3	31.6
Salinity	%	0.00	0.00	0.00	0.00	0.00	0.00
Turbidity	NTU	216.5	250.9	240.1	217.0	213.9	191.9
SS	mg/l	255.5	296.1	283.3	256.1	252.4	226.4

Note: The contractor will not conduct the Drainage 1 and Diversion Channel due to site condition.

Environmental Monitoring (28th September 2018)



Sand borrow pit area



Diversion Creek BG



Diversion Creek area



Area		Construction Area					
Location		Diversion Creek BG			Diversion Creek MT		
TIME		09:00			08:56		
pH		7.42			7.52		
Temperature	°C	30.1			30.1		
Salinity	%	0.00			0.00		
Turbidity	NTU	408.9			429.2		
SS	mg/l	482.5			506.5		
Area		Sand borrow pit					
Location		BG1	BG2	BG3	MT1	MT2	MT3
TIME		08:40	08:45	08:46	08:49	08:52	08:54
pH		7.79	7.74	7.62	7.61	7.52	7.52
Temperature	°C	30.0	30.0	30.0	30.0	30.0	30.0
Salinity	%	0.00	0.00	0.00	0.00	0.00	0.00
Turbidity	NTU	438.0	425.1	504.2	466.4	448.7	416.2
SS	mg/l	516.8	501.6	595.0	550.4	529.5	491.1

Note: The contractor will not conduct the Drainage 1 and Drainage 2 due to site condition.

Standard: SS of MT is less than SS of BG+100mg/L

Date	SS(mg/L)										SS(mg/L)										SS(mg/L)										SS(mg/L)										SS(mg/L)										SS(mg/L)										SS(mg/L)										SS(mg/L)										SS(mg/L)										SS(mg/L)										SS(mg/L)										SS(mg/L)										SS(mg/L)										SS(mg/L)										SS(mg/L)										SS(mg/L)										SS(mg/L)										SS(mg/L)										SS(mg/L)										SS(mg/L)										SS(mg/L)										SS(mg/L)										SS(mg/L)										SS(mg/L)										SS(mg/L)										SS(mg/L)										SS(mg/L)										SS(mg/L)										SS(mg/L)										SS(mg/L)										SS(mg/L)										SS(mg/L)										SS(mg/L)										SS(mg/L)										SS(mg/L)										SS(mg/L)										SS(mg/L)										SS(mg/L)										SS(mg/L)										SS(mg/L)										SS(mg/L)										SS(mg/L)										SS(mg/L)										SS(mg/L)										SS(mg/L)										SS(mg/L)										SS(mg/L)										SS(mg/L)										SS(mg/L)										SS(mg/L)										SS(mg/L)										SS(mg/L)										SS(mg/L)										SS(mg/L)										SS(mg/L)										SS(mg/L)										SS(mg/L)										SS(mg/L)										SS(mg/L)										SS(mg/L)										SS(mg/L)										SS(mg/L)										SS(mg/L)										SS(mg/L)										SS(mg/L)										SS(mg/L)										SS(mg/L)										SS(mg/L)										SS(mg/L)										SS(mg/L)										SS(mg/L)										SS(mg/L)										SS(mg/L)										SS(mg/L)										SS(mg/L)										SS(mg/L)										SS(mg/L)										SS(mg/L)										SS(mg/L)										SS(mg/L)										SS(mg/L)										SS(mg/L)										SS(mg/L)										SS(mg/L)										SS(mg/L)										SS(mg/L)										SS(mg/L)										SS(mg/L)										SS(mg/L)										SS(mg/L)										SS(mg/L)										SS(mg/L)										SS(mg/L)										SS(mg/L)										SS(mg/L)										SS(mg/L)										SS(mg/L)										SS(mg/L)										SS(mg/L)										SS(mg/L)										SS(mg/L)										SS(mg/L)										SS(mg/L)										SS(mg/L)										SS(mg/L)										SS(mg/L)										SS(mg/L)										SS(mg/L)										SS(mg/L)										SS(mg/L)										SS(mg/L)										SS(mg/L)										SS(mg/L)										SS(mg/L)										SS(mg/L)										SS(mg/L)										SS(mg/L)										SS(mg/L)										SS(mg/L)										SS(mg/L)										SS(mg/L)										SS(mg/L)										SS(mg/L)										SS(mg/L)										SS(mg/L)										SS(mg/L)										SS(mg/L)										SS(mg/L)										SS(mg/L)										SS(mg/L)										SS(mg/L)										SS(mg/L)										SS(mg/L)										SS(mg/L)										SS(mg/L)										SS(mg/L)										SS(mg/L)										SS(mg/L)										SS(mg/L)										SS(mg/L)										SS(mg/L)										SS(mg/L)										SS(mg/L)										SS(mg/L)										SS(mg/L)										SS(mg/L)										SS(mg/L)										SS(mg/L)										SS(mg/L)										SS(mg/L)										SS(mg/L)										SS(mg/L)										SS(mg/L)										SS(mg/L)										SS(mg/L)										SS(mg/L)										SS(mg/L)										SS(mg/L)										SS(mg/L)										SS(mg/L)										SS(mg/L)										SS(mg/L)										SS(mg/L)										SS(mg/L)										SS(mg/L)										SS(mg/L)										SS(mg/L)										SS(mg/L)										SS(mg/L)										SS(mg/L)										SS(mg/L)										SS(mg/L)										SS(mg/L)										SS(mg/L)										SS(mg/L)										SS(mg/L)										SS(mg/L)										SS(mg/L)										SS(mg/L)										SS(mg/L)										SS(mg/L)										SS(mg/L)										SS(mg/L)										SS(mg/L)										SS(mg/L)										SS(mg/L)										SS(mg/L)										SS(mg/L)										SS(mg/L)										SS(mg/L)										SS(mg/L)										SS(mg/L)										SS(mg/L)										SS(mg/L)										SS(mg/L)										SS(mg/L)										SS(mg/L)										SS(mg/L)										SS(mg/L)										SS(mg/L)										SS(mg/L)										SS(mg/L)										SS(mg/L)										SS(mg/L)										SS(mg/L)										SS(mg/L)										SS(mg/L)										SS(mg/L)										SS(mg/L)										SS(mg/L)										SS(mg/L)										SS(mg/L)										SS(mg/L)										SS(mg/L)										SS(mg/L)										SS(mg/L)										SS(mg/L)										SS(mg/L)										SS(mg/L)										SS(mg/L)										SS(mg/L)										SS(mg/L)										SS(mg/L)										SS(mg/L)										SS(mg/L)										SS(mg/L)										SS(mg/L)										SS(mg/L)										SS(mg/L)										SS(mg/L)										SS(mg/L)										SS(mg/L)										SS(mg/L)										SS(mg/L)										SS(mg/L)										SS(mg/L)										SS(mg/L)										SS(mg/L)										SS(mg/L)										SS(mg/L)										SS(mg/L)										SS(mg/L)										SS(mg/L)										SS(mg/L)										SS(mg/L)										SS(mg/L)										SS(mg/L)										SS(mg/L)										SS(mg/L)										SS(mg/L)										SS(mg/L)										SS(mg/L)										SS(mg/L)										SS(mg/L)										SS(mg/L)										SS(mg/L)										SS(mg/L)										SS(mg/L)										SS(mg/L)										SS(mg/L)										SS(mg/L)										SS(mg/L)										SS(mg/L)										SS(mg/L)										SS(mg/L)										SS(mg/L)										SS(mg/L)										SS(mg/L)										SS(mg/L)										SS(mg/L)										SS(mg/L)										SS(mg/L)										SS(mg/L)										SS(mg/L)										SS(mg/L)										SS(mg/L)										SS(mg/L)										SS(mg/L)										SS(mg/L)										SS(mg/L)										SS(mg/L)										SS(mg/L)										SS(mg/L)										SS(mg/L)										SS(mg/L)										SS(mg/L)										SS(mg/L)										SS(mg/L)										SS(mg/L)										SS(mg/L)										SS(mg/L)										SS(mg/L)										SS(mg/L)										SS(mg/L)										SS(mg/L)										SS(mg/L)										SS(mg/L)										SS(mg/L)										SS(mg/L)										SS(mg/L)										SS(mg/L)										SS(mg/L)										SS(mg/L)										SS(mg/L)										SS(mg/L)										SS(mg/L)										SS(mg/L)										SS(mg/L)										SS(mg/L)										SS(mg/L)										SS(mg/L)										SS(mg/L)										SS(mg/L)										SS(mg/L)										SS(mg/L)										SS(mg/L)										SS(mg/L)										SS(mg/L)										SS(mg/L)										SS(mg/L)										SS(mg/L)										SS(mg/L)										SS(mg/L)										SS(mg/L)										SS(mg/L)										SS(mg/L)										SS(mg/L)										SS(mg/L)										SS(mg/L)										SS(mg/L)										SS(mg/L)										SS(mg/L)										SS(mg/L)										SS(mg/L)										SS(mg/L)										SS(mg/L)										SS(mg/L)										SS(mg/L)										SS(mg/L)										SS(mg/L)										SS(mg/L)										SS(mg/L)										SS(mg/L)										SS(mg/L)										SS(mg/L)										SS(mg/L)										SS(mg/L)										SS(mg/L)										SS(mg/L)										SS(mg/L)										SS(mg/L)										SS(mg/L)										SS(mg/L)										SS(mg/L)										SS(mg/L)										SS(mg/L)										SS(mg/L)										SS(mg/L)										SS(mg/L)										SS(mg/L)										SS(mg/L)										SS(mg/L)										SS(mg/L)										SS(mg/L)										SS(mg/L)										SS(mg/L)										SS(mg/L)										SS(mg/L)										SS(mg/L)										SS(mg/L)										SS(mg/L)										SS(mg/L)										SS(mg/L)										SS(mg/L)										SS(mg/L)										SS(mg/L)										SS(mg/L)										SS(mg/L)										SS(mg/L)										SS(mg/L)										SS(mg/L)										SS(mg/L)										SS(mg/L)										SS(mg/L)										SS(mg/L)										SS(mg/L)										SS(mg/L)										SS(mg/L)										SS(mg/L)										SS(mg/L)										SS(mg/L)										SS(mg/L)										SS(mg/L)										SS(mg/L)										SS(mg/L)										SS(mg/L)										SS(mg/L)										SS(mg/L)										SS(mg/L)										SS(mg/L)										SS(mg/L)										SS(mg/L)										SS(mg/L)										SS(mg/L)										SS(mg/L)										SS(mg/L)										SS(mg/L)										SS(mg/L)										SS(mg/L)										SS(mg/L)										SS(mg/L)										SS(mg/L)										SS(mg/L)										SS(mg/L)										SS(mg/L)										SS(mg/L)										SS(mg/L)										SS(mg/L)										SS(mg/L)										SS(mg/L)										SS(mg/L)										SS(mg/L)										SS(mg/L)										SS(mg/L)										SS(mg/L)										SS(mg/L)										SS(mg/L)										SS(mg/L)										SS(mg/L)									
------	----------	--	--	--	--	--	--	--	--	--	----------	--	--	--	--	--	--	--	--	--	----------	--	--	--	--	--	--	--	--	--	----------	--	--	--	--	--	--	--	--	--	----------	--	--	--	--	--	--	--	--	--	----------	--	--	--	--	--	--	--	--	--	----------	--	--	--	--	--	--	--	--	--	----------	--	--	--	--	--	--	--	--	--	----------	--	--	--	--	--	--	--	--	--	----------	--	--	--	--	--	--	--	--	--	----------	--	--	--	--	--	--	--	--	--	----------	--	--	--	--	--	--	--	--	--	----------	--	--	--	--	--	--	--	--	--	----------	--	--	--	--	--	--	--	--	--	----------	--	--	--	--	--	--	--	--	--	----------	--	--	--	--	--	--	--	--	--	----------	--	--	--	--	--	--	--	--	--	----------	--	--	--	--	--	--	--	--	--	----------	--	--	--	--	--	--	--	--	--	----------	--	--	--	--	--	--	--	--	--	----------	--	--	--	--	--	--	--	--	--	----------	--	--	--	--	--	--	--	--	--	----------	--	--	--	--	--	--	--	--	--	----------	--	--	--	--	--	--	--	--	--	----------	--	--	--	--	--	--	--	--	--	----------	--	--	--	--	--	--	--	--	--	----------	--	--	--	--	--	--	--	--	--	----------	--	--	--	--	--	--	--	--	--	----------	--	--	--	--	--	--	--	--	--	----------	--	--	--	--	--	--	--	--	--	----------	--	--	--	--	--	--	--	--	--	----------	--	--	--	--	--	--	--	--	--	----------	--	--	--	--	--	--	--	--	--	----------	--	--	--	--	--	--	--	--	--	----------	--	--	--	--	--	--	--	--	--	----------	--	--	--	--	--	--	--	--	--	----------	--	--	--	--	--	--	--	--	--	----------	--	--	--	--	--	--	--	--	--	----------	--	--	--	--	--	--	--	--	--	----------	--	--	--	--	--	--	--	--	--	----------	--	--	--	--	--	--	--	--	--	----------	--	--	--	--	--	--	--	--	--	----------	--	--	--	--	--	--	--	--	--	----------	--	--	--	--	--	--	--	--	--	----------	--	--	--	--	--	--	--	--	--	----------	--	--	--	--	--	--	--	--	--	----------	--	--	--	--	--	--	--	--	--	----------	--	--	--	--	--	--	--	--	--	----------	--	--	--	--	--	--	--	--	--	----------	--	--	--	--	--	--	--	--	--	----------	--	--	--	--	--	--	--	--	--	----------	--	--	--	--	--	--	--	--	--	----------	--	--	--	--	--	--	--	--	--	----------	--	--	--	--	--	--	--	--	--	----------	--	--	--	--	--	--	--	--	--	----------	--	--	--	--	--	--	--	--	--	----------	--	--	--	--	--	--	--	--	--	----------	--	--	--	--	--	--	--	--	--	----------	--	--	--	--	--	--	--	--	--	----------	--	--	--	--	--	--	--	--	--	----------	--	--	--	--	--	--	--	--	--	----------	--	--	--	--	--	--	--	--	--	----------	--	--	--	--	--	--	--	--	--	----------	--	--	--	--	--	--	--	--	--	----------	--	--	--	--	--	--	--	--	--	----------	--	--	--	--	--	--	--	--	--	----------	--	--	--	--	--	--	--	--	--	----------	--	--	--	--	--	--	--	--	--	----------	--	--	--	--	--	--	--	--	--	----------	--	--	--	--	--	--	--	--	--	----------	--	--	--	--	--	--	--	--	--	----------	--	--	--	--	--	--	--	--	--	----------	--	--	--	--	--	--	--	--	--	----------	--	--	--	--	--	--	--	--	--	----------	--	--	--	--	--	--	--	--	--	----------	--	--	--	--	--	--	--	--	--	----------	--	--	--	--	--	--	--	--	--	----------	--	--	--	--	--	--	--	--	--	----------	--	--	--	--	--	--	--	--	--	----------	--	--	--	--	--	--	--	--	--	----------	--	--	--	--	--	--	--	--	--	----------	--	--	--	--	--	--	--	--	--	----------	--	--	--	--	--	--	--	--	--	----------	--	--	--	--	--	--	--	--	--	----------	--	--	--	--	--	--	--	--	--	----------	--	--	--	--	--	--	--	--	--	----------	--	--	--	--	--	--	--	--	--	----------	--	--	--	--	--	--	--	--	--	----------	--	--	--	--	--	--	--	--	--	----------	--	--	--	--	--	--	--	--	--	----------	--	--	--	--	--	--	--	--	--	----------	--	--	--	--	--	--	--	--	--	----------	--	--	--	--	--	--	--	--	--	----------	--	--	--	--	--	--	--	--	--	----------	--	--	--	--	--	--	--	--	--	----------	--	--	--	--	--	--	--	--	--	----------	--	--	--	--	--	--	--	--	--	----------	--	--	--	--	--	--	--	--	--	----------	--	--	--	--	--	--	--	--	--	----------	--	--	--	--	--	--	--	--	--	----------	--	--	--	--	--	--	--	--	--	----------	--	--	--	--	--	--	--	--	--	----------	--	--	--	--	--	--	--	--	--	----------	--	--	--	--	--	--	--	--	--	----------	--	--	--	--	--	--	--	--	--	----------	--	--	--	--	--	--	--	--	--	----------	--	--	--	--	--	--	--	--	--	----------	--	--	--	--	--	--	--	--	--	----------	--	--	--	--	--	--	--	--	--	----------	--	--	--	--	--	--	--	--	--	----------	--	--	--	--	--	--	--	--	--	----------	--	--	--	--	--	--	--	--	--	----------	--	--	--	--	--	--	--	--	--	----------	--	--	--	--	--	--	--	--	--	----------	--	--	--	--	--	--	--	--	--	----------	--	--	--	--	--	--	--	--	--	----------	--	--	--	--	--	--	--	--	--	----------	--	--	--	--	--	--	--	--	--	----------	--	--	--	--	--	--	--	--	--	----------	--	--	--	--	--	--	--	--	--	----------	--	--	--	--	--	--	--	--	--	----------	--	--	--	--	--	--	--	--	--	----------	--	--	--	--	--	--	--	--	--	----------	--	--	--	--	--	--	--	--	--	----------	--	--	--	--	--	--	--	--	--	----------	--	--	--	--	--	--	--	--	--	----------	--	--	--	--	--	--	--	--	--	----------	--	--	--	--	--	--	--	--	--	----------	--	--	--	--	--	--	--	--	--	----------	--	--	--	--	--	--	--	--	--	----------	--	--	--	--	--	--	--	--	--	----------	--	--	--	--	--	--	--	--	--	----------	--	--	--	--	--	--	--	--	--	----------	--	--	--	--	--	--	--	--	--	----------	--	--	--	--	--	--	--	--	--	----------	--	--	--	--	--	--	--	--	--	----------	--	--	--	--	--	--	--	--	--	----------	--	--	--	--	--	--	--	--	--	----------	--	--	--	--	--	--	--	--	--	----------	--	--	--	--	--	--	--	--	--	----------	--	--	--	--	--	--	--	--	--	----------	--	--	--	--	--	--	--	--	--	----------	--	--	--	--	--	--	--	--	--	----------	--	--	--	--	--	--	--	--	--	----------	--	--	--	--	--	--	--	--	--	----------	--	--	--	--	--	--	--	--	--	----------	--	--	--	--	--	--	--	--	--	----------	--	--	--	--	--	--	--	--	--	----------	--	--	--	--	--	--	--	--	--	----------	--	--	--	--	--	--	--	--	--	----------	--	--	--	--	--	--	--	--	--	----------	--	--	--	--	--	--	--	--	--	----------	--	--	--	--	--	--	--	--	--	----------	--	--	--	--	--	--	--	--	--	----------	--	--	--	--	--	--	--	--	--	----------	--	--	--	--	--	--	--	--	--	----------	--	--	--	--	--	--	--	--	--	----------	--	--	--	--	--	--	--	--	--	----------	--	--	--	--	--	--	--	--	--	----------	--	--	--	--	--	--	--	--	--	----------	--	--	--	--	--	--	--	--	--	----------	--	--	--	--	--	--	--	--	--	----------	--	--	--	--	--	--	--	--	--	----------	--	--	--	--	--	--	--	--	--	----------	--	--	--	--	--	--	--	--	--	----------	--	--	--	--	--	--	--	--	--	----------	--	--	--	--	--	--	--	--	--	----------	--	--	--	--	--	--	--	--	--	----------	--	--	--	--	--	--	--	--	--	----------	--	--	--	--	--	--	--	--	--	----------	--	--	--	--	--	--	--	--	--	----------	--	--	--	--	--	--	--	--	--	----------	--	--	--	--	--	--	--	--	--	----------	--	--	--	--	--	--	--	--	--	----------	--	--	--	--	--	--	--	--	--	----------	--	--	--	--	--	--	--	--	--	----------	--	--	--	--	--	--	--	--	--	----------	--	--	--	--	--	--	--	--	--	----------	--	--	--	--	--	--	--	--	--	----------	--	--	--	--	--	--	--	--	--	----------	--	--	--	--	--	--	--	--	--	----------	--	--	--	--	--	--	--	--	--	----------	--	--	--	--	--	--	--	--	--	----------	--	--	--	--	--	--	--	--	--	----------	--	--	--	--	--	--	--	--	--	----------	--	--	--	--	--	--	--	--	--	----------	--	--	--	--	--	--	--	--	--	----------	--	--	--	--	--	--	--	--	--	----------	--	--	--	--	--	--	--	--	--	----------	--	--	--	--	--	--	--	--	--	----------	--	--	--	--	--	--	--	--	--	----------	--	--	--	--	--	--	--	--	--	----------	--	--	--	--	--	--	--	--	--	----------	--	--	--	--	--	--	--	--	--	----------	--	--	--	--	--	--	--	--	--	----------	--	--	--	--	--	--	--	--	--	----------	--	--	--	--	--	--	--	--	--	----------	--	--	--	--	--	--	--	--	--	----------	--	--	--	--	--	--	--	--	--	----------	--	--	--	--	--	--	--	--	--	----------	--	--	--	--	--	--	--	--	--	----------	--	--	--	--	--	--	--	--	--	----------	--	--	--	--	--	--	--	--	--	----------	--	--	--	--	--	--	--	--	--	----------	--	--	--	--	--	--	--	--	--	----------	--	--	--	--	--	--	--	--	--	----------	--	--	--	--	--	--	--	--	--	----------	--	--	--	--	--	--	--	--	--	----------	--	--	--	--	--	--	--	--	--	----------	--	--	--	--	--	--	--	--	--	----------	--	--	--	--	--	--	--	--	--	----------	--	--	--	--	--	--	--	--	--	----------	--	--	--	--	--	--	--	--	--	----------	--	--	--	--	--	--	--	--	--	----------	--	--	--	--	--	--	--	--	--	----------	--	--	--	--	--	--	--	--	--	----------	--	--	--	--	--	--	--	--	--	----------	--	--	--	--	--	--	--	--	--	----------	--	--	--	--	--	--	--	--	--	----------	--	--	--	--	--	--	--	--	--	----------	--	--	--	--	--	--	--	--	--	----------	--	--	--	--	--	--	--	--	--	----------	--	--	--	--	--	--	--	--	--	----------	--	--	--	--	--	--	--	--	--	----------	--	--	--	--	--	--	--	--	--	----------	--	--	--	--	--	--	--	--	--	----------	--	--	--	--	--	--	--	--	--	----------	--	--	--	--	--	--	--	--	--	----------	--	--	--	--	--	--	--	--	--	----------	--	--	--	--	--	--	--	--	--	----------	--	--	--	--	--	--	--	--	--	----------	--	--	--	--	--	--	--	--	--	----------	--	--	--	--	--	--	--	--	--	----------	--	--	--	--	--	--	--	--	--	----------	--	--	--	--	--	--	--	--	--	----------	--	--	--	--	--	--	--	--	--	----------	--	--	--	--	--	--	--	--	--	----------	--	--	--	--	--	--	--	--	--	----------	--	--	--	--	--	--	--	--	--	----------	--	--	--	--	--	--	--	--	--	----------	--	--	--	--	--	--	--	--	--	----------	--	--	--	--	--	--	--	--	--	----------	--	--	--	--	--	--	--	--	--	----------	--	--	--	--	--	--	--	--	--	----------	--	--	--	--	--	--	--	--	--	----------	--	--	--	--	--	--	--	--	--	----------	--	--	--	--	--	--	--	--	--	----------	--	--	--	--	--	--	--	--	--	----------	--	--	--	--	--	--	--	--	--	----------	--	--	--	--	--	--	--	--	--	----------	--	--	--	--	--	--	--	--	--	----------	--	--	--	--	--	--	--	--	--	----------	--	--	--	--	--	--	--	--	--	----------	--	--	--	--	--	--	--	--	--	----------	--	--	--	--	--	--	--	--	--	----------	--	--	--	--	--	--	--	--	--	----------	--	--	--	--	--	--	--	--	--	----------	--	--	--	--	--	--	--	--	--	----------	--	--	--	--	--	--	--	--	--	----------	--	--	--	--	--	--	--	--	--	----------	--	--	--	--	--	--	--	--	--	----------	--	--	--	--	--	--	--	--	--	----------	--	--	--	--	--	--	--	--	--	----------	--	--	--	--	--	--	--	--	--	----------	--	--	--	--	--	--	--	--	--	----------	--	--	--	--	--	--	--	--	--	----------	--	--	--	--	--	--	--	--	--	----------	--	--	--	--	--	--	--	--	--	----------	--	--	--	--	--	--	--	--	--	----------	--	--	--	--	--	--	--	--	--	----------	--	--	--	--	--	--	--	--	--	----------	--	--	--	--	--	--	--	--	--	----------	--	--	--	--	--	--	--	--	--	----------	--	--	--	--	--	--	--	--	--	----------	--	--	--	--	--	--	--	--	--	----------	--	--	--	--	--	--	--	--	--	----------	--	--	--	--	--	--	--	--	--	----------	--	--	--	--	--	--	--	--	--	----------	--	--	--	--	--	--	--	--	--	----------	--	--	--	--	--	--	--	--	--	----------	--	--	--	--	--	--	--	--	--	----------	--	--	--	--	--	--	--	--	--	----------	--	--	--	--	--	--	--	--	--	----------	--	--	--	--	--	--	--	--	--	----------	--	--	--	--	--	--	--	--	--	----------	--	--	--	--	--	--	--	--	--	----------	--	--	--	--	--	--	--	--	--	----------	--	--	--	--	--	--	--	--	--	----------	--	--	--	--	--	--	--	--	--	----------	--	--	--	--	--	--	--	--	--	----------	--	--	--	--	--	--	--	--	--	----------	--	--	--	--	--	--	--	--	--	----------	--	--	--	--	--	--	--	--	--	----------	--	--	--	--	--	--	--	--	--	----------	--	--	--	--	--	--	--	--	--	----------	--	--	--	--	--	--	--	--	--	----------	--	--	--	--	--	--	--	--	--	----------	--	--	--	--	--	--	--	--	--	----------	--	--	--	--	--	--	--	--	--	----------	--	--	--	--	--	--	--	--	--	----------	--	--	--	--	--	--	--	--	--	----------	--	--	--	--	--	--	--	--	--	----------	--	--	--	--	--	--	--	--	--	----------	--	--	--	--	--	--	--	--	--	----------	--	--	--	--	--	--	--	--	--	----------	--	--	--	--	--	--	--	--	--	----------	--	--	--	--	--	--	--	--	--	----------	--	--	--	--	--	--	--	--	--	----------	--	--	--	--	--	--	--	--	--	----------	--	--	--	--	--	--	--	--	--	----------	--	--	--	--	--	--	--	--	--	----------	--	--	--	--	--	--	--	--	--	----------	--	--	--	--	--	--	--	--	--	----------	--	--	--	--	--	--	--	--	--	----------	--	--	--	--	--	--	--	--	--	----------	--	--	--	--	--	--	--	--	--	----------	--	--	--	--	--	--	--	--	--	----------	--	--	--	--	--	--	--	--	--	----------	--	--	--	--	--	--	--	--	--	----------	--	--	--	--	--	--	--	--	--	----------	--	--	--	--	--	--	--	--	--	----------	--	--	--	--	--	--	--	--	--	----------	--	--	--	--	--	--	--	--	--	----------	--	--	--	--	--	--	--	--	--	----------	--	--	--	--	--	--	--	--	--	----------	--	--	--	--	--	--	--	--	--	----------	--	--	--	--	--	--	--	--	--	----------	--	--	--	--	--	--	--	--	--	----------	--	--	--	--	--	--	--	--	--	----------	--	--	--	--	--	--	--	--	--	----------	--	--	--	--	--	--	--	--	--	----------	--	--	--	--	--	--	--	--	--	----------	--	--	--	--	--	--	--	--	--	----------	--	--	--	--	--	--	--	--	--	----------	--	--	--	--	--	--	--	--	--	----------	--	--	--	--	--	--	--	--	--	----------	--	--	--	--	--	--	--	--	--	----------	--	--	--	--	--	--	--	--	--	----------	--	--	--	--	--	--	--	--	--	----------	--	--	--	--	--	--	--	--	--	----------	--	--	--	--	--	--	--	--	--	----------	--	--	--	--	--	--	--	--	--	----------	--	--	--	--	--	--	--	--	--	----------	--	--	--	--	--	--	--	--	--	----------	--	--	--	--	--	--	--	--	--	----------	--	--	--	--	--	--	--	--	--	----------	--	--	--	--	--	--	--	--	--	----------	--	--	--	--	--	--	--	--	--	----------	--	--	--	--	--	--	--	--	--	----------	--	--	--	--	--	--	--	--	--	----------	--	--	--	--	--	--	--	--	--	----------	--	--	--	--	--	--	--	--	--	----------	--	--	--	--	--	--	--	--	--	----------	--	--	--	--	--	--	--	--	--	----------	--	--	--	--	--	--	--	--	--	----------	--	--	--	--	--	--	--	--	--	----------	--	--	--	--	--	--	--	--	--	----------	--	--	--	--	--	--	--	--	--	----------	--	--	--	--	--	--	--	--	--	----------	--	--	--	--	--	--	--	--	--	----------	--	--	--	--	--	--	--	--	--	----------	--	--	--	--	--	--	--	--	--	----------	--	--	--	--	--	--	--	--	--	----------	--	--	--	--	--	--	--	--	--	----------	--	--	--	--	--	--	--	--	--	----------	--	--	--	--	--	--	--	--	--	----------	--	--	--	--	--	--	--	--	--	----------	--	--	--	--	--	--	--	--	--	----------	--	--	--	--	--	--	--	--	--	----------	--	--	--	--	--	--	--	--	--	----------	--	--	--	--	--	--	--	--	--	----------	--	--	--	--	--	--	--	--	--	----------	--	--	--	--	--	--	--	--	--	----------	--	--	--	--	--	--	--	--	--	----------	--	--	--	--	--	--	--	--	--	----------	--	--	--	--	--	--	--	--	--	----------	--	--	--	--	--	--	--	--	--	----------	--	--	--	--	--	--	--	--	--	----------	--	--	--	--	--	--	--	--	--	----------	--	--	--	--	--	--	--	--	--	----------	--	--	--	--	--	--	--	--	--	----------	--	--	--	--	--	--	--	--	--	----------	--	--	--	--	--	--	--	--	--	----------	--	--	--	--	--	--	--	--	--	----------	--	--	--	--	--	--	--	--	--	----------	--	--	--	--	--	--	--	--	--	----------	--	--	--	--	--	--	--	--	--	----------	--	--	--	--	--	--	--	--	--	----------	--	--	--	--	--	--	--	--	--	----------	--	--	--	--	--	--	--	--	--	----------	--	--	--	--	--	--	--	--	--	----------	--	--	--	--	--	--	--	--	--	----------	--	--	--	--	--	--	--	--	--	----------	--	--	--	--	--	--	--	--	--	----------	--	--	--	--	--	--	--	--	--	----------	--	--	--	--	--	--	--	--	--	----------	--	--	--	--	--	--	--	--	--	----------	--	--	--	--	--	--	--	--	--	----------	--	--	--	--	--	--	--	--	--	----------	--	--	--	--	--	--	--	--	--	----------	--	--	--	--	--	--	--	--	--	----------	--	--	--	--	--	--	--	--	--	----------	--	--	--	--	--	--	--	--	--	----------	--	--	--	--	--	--	--	--	--	----------	--	--	--	--	--	--	--	--	--	----------	--	--	--	--	--	--	--	--	--	----------	--	--	--	--	--	--	--	--	--	----------	--	--	--	--	--	--	--	--	--	----------	--	--	--	--	--	--	--	--	--	----------	--	--	--	--	--	--	--	--	--	----------	--	--	--	--	--	--	--	--	--	----------	--	--	--	--	--	--	--	--	--	----------	--	--	--	--	--	--	--	--	--	----------	--	--	--	--	--	--	--	--	--	----------	--	--	--	--	--	--	--	--	--	----------	--	--	--	--	--	--	--	--	--	----------	--	--	--	--	--	--	--	--	--	----------	--	--	--	--	--	--	--	--	--	----------	--	--	--	--	--	--	--	--	--	----------	--	--	--	--	--	--	--	--	--	----------	--	--	--	--	--	--	--	--	--	----------	--	--	--	--	--	--	--	--	--	----------	--	--	--	--	--	--	--	--	--	----------	--	--	--	--	--	--	--	--	--	----------	--	--	--	--	--	--	--	--	--	----------	--	--	--	--	--	--	--	--	--	----------	--	--	--	--	--	--	--	--	--	----------	--	--	--	--	--	--	--	--	--	----------	--	--	--	--	--	--	--	--	--

[illegible]

(m3)

Date	Generation of Waste					Treatment					Dumping Site Capacity
	Organic	Construction	Plot 26 Site Clearing	Oil	Hazardous	Recycle			Dumping		
						Concrete	Iron	Oil			
Jun-16	65 m3	0.5 m3		—	0	0.5 m3	—	—	65 m3	7500 m3	
Jul-16	65 m3	3 m3	—	—	0	3 m3	—	—	65 m3	7435 m3	
Aug-16	70 m3	3 m3	—	—	0	3 m3	—	—	70 m3	7370 m3	
Sep-16	70 m3	3 m3	—	—	0	3 m3	—	—	70 m3	7300 m3	
Oct-16	70 m3	3 m3	—	—	0	3 m3	—	—	70 m3	7230 m3	
Nov-16	70 m3	3 m3	—	—	0	3 m3	—	—	70 m3	7160 m3	
Dec-16	94 m3	4.5 m3	383.3 m3	—	0	4.5 m3	—	—	477.3 m3	7090 m3	
Jan-17	94 m3	4.5 m3	197.35 m3	200L	0	4.5 m3	—	200L	291.35 m3	6612.7 m3	
Feb-17	94 m3	4.5 m3	2884.22 m3	160L	0	4.5 m3	—	160L	2978.22 m3	6321.35 m3	
Mar-17	94 m3	4.5 m3	144.8 m3	—	0	4.5 m3	—	—	238.8 m3	3343.13 m3	
Apr-17	94 m3	4.5 m3	—	—	0	4.5 m3	—	—	94 m3	3104.33 m3	
May-17	94 m3	4.5 m3	—	—	0	4.5 m3	—	—	94 m3	3010.33 m3	
Jun-17	94 m3	4.5 m3	—	870L	0	4.5 m3	—	870L	94 m3	2916.33 m3	
Jul-17	94 m3	4.5 m3	—	—	0	4.5 m3	12ton	—	94 m3	2822.33 m3	
Aug-17	94 m3	4.5 m3	—	200L	0	4.5 m3	—	200L	94 m3	2728.33 m3	
Sep-17	94 m3	4.5 m3	—	150L	0	4.5 m3	—	150L	94 m3	2634.33 m3	
Oct-17	94 m3	4.5 m3	30 m3	100L	0	4.5 m3	—	100L	124 m3	2540.33 m3	
Nov-17	94 m3	4.5 m3	—	—	0	4.5 m3	—	—	94 m3	2416.33 m3	
Dec-17	94 m3	104.5 m3	—	—	0	104.5 m3	—	—	94 m3	2322.33 m3	
Jan-18	94 m3	4.5 m3	—	—	0	4.5 m3	15ton	—	94 m3	2228.33 m3	
Feb-18	94 m3	4.5 m3	—	—	0	4.5 m3	—	—	94 m3	2134.33 m3	
Mar-18	80 m3	4.5 m3	—	—	0	4.5 m3	—	—	80 m3	2040.33 m3	
Apr-18	120 m3	4.5 m3	—	—	0	4.5 m3	—	—	120 m3	1960.33 m3	
May-18	80 m3	4.5 m3	—	—	0	4.5 m3	—	—	80 m3	1840.33 m3	
Jun-18	88 m3	4.5 m3	—	—	0	4.5 m3	—	—	88 m3	1760.33 m3	
Jul-18	70 m3	4.5 m3	—	—	0	4.5 m3	—	—	70 m3	1672.33 m3	
Aug-18	80 m3	4.5 m3	336 m3	—	0	4.5 m3	—	—	416 m3	1602.33 m3	
Sep-18	70 m3	4.5 m3	64 m3	—	0	4.5 m3	—	—	134 m3	1186.33 m3	
Oct-18										1052.33 m3	
Nov-18											
Dec-18											
Total	2408 m3	205.5 m3	4039.67 m3	1680L	0	201 m3	27ton	1680L	6447.67 m3		

IEC Session (Local)

[illegible]

IEC Session (Forigner)

[illegible]

Condom and Pamphlet Distribution

Item	Place of Distribution	Method of Distribution	Duration	Number	Previous Number	Accumulated Number
Condom	Assembly room	By hand	30-May	288pcs		
	HIV Clinic	By hand	1/Jun to 29/July			
Pamphlet	Assembly room	By hand	30-May	150pcs		
	HIV Clinic	By hand	5-Jun	50pcs		
Condom	Tool box Meeting	By hand	29-Jul-16	288pcs	288pcs	576pcs
	Site Office	By hand	1/Jun to 29/July	144pcs		144pcs
Pamphlet	Tool box Meeting	By hand	29-Jul-16	58pcs	150pcs	208pcs
	Site Office	By hand	5-Jun	158pcs	50pcs	208pcs
Condom	Site Office	By hand	26-Oct-16	150pcs	576pcs	726pcs
	Office & site toilets	By putting on the desk	Sep to Nov	700pcs	144pcs	844pcs
Pamphlet	HIV Awareness session	By hand	29-Jul-16	100pcs	208pcs	308pcs
	Site Office	By hand	26-Oct-16	100pcs	208pcs	308pcs
	Office toilets	By putting on the desk	26-Oct-16	50pcs		50pcs
Condom	Site Office	By hand	26-Oct-16	100pcs	726pcs	826pcs
	Office & site toilets	By putting on the desk	Jan-17	800pcs	844pcs	1644pcs
Pamphlet	HIV Awareness session	By hand	20-Jan-17	100pcs	308pcs	408pcs
	Site Office	By hand	26-Oct-16	100pcs	308pcs	408pcs
	Office & site toilets	By putting on the desk	26-Oct-16	150pcs	50pcs	200pcs
Condom	Site Office	By hand	28-Feb-17	100pcs	826pcs	926pcs
	Office & site toilets	By putting on the desk	Feb-17	800pcs	1644pcs	2444pcs
Pamphlet	HIV Awareness session	By hand	28-Feb-17	150pcs	408pcs	558pcs
	Site Office	By hand	28-Feb-17	50pcs	408pcs	458pcs

Item	Place of Distribution	Method of Distribution	Duration	Number	Previous Number	Accumulated Number
	Office & site toilets	By putting on the desk	28-Feb-17	150pcs	200pcs	350pcs
Condom	Site Office	By hand	31-Mar-17	100pcs	926pcs	1026pcs
	Office & site toilets	By putting on the desk	Mar-17	500pcs	2444pcs	2944pcs
Pamphlet	HIV Awareness session	By hand	31-Mar-17	100pcs	558pcs	658pcs
	Site Office	By hand	31-Mar-17	50pcs	458pcs	508pcs
	Office & site toilets	By putting on the desk	31-Mar-17	200pcs	350pcs	550pcs
Condom	Site Office	By hand	23-May-17	150pcs	1026pcs	1176pcs
	Office & site toilets	By putting on the desk	May-17	500pcs	2944pcs	3444pcs
Pamphlet	HIV Awareness session	By hand	23-May-17	150pcs	658pcs	808pcs
	Site Office	By hand	23-May-17	50pcs	508pcs	558pcs
	Office & site toilets	By putting on the desk	31-Mar-17	200pcs	550pcs	750pcs
Condom	Site Office	By hand	11-Jul-17	150pcs	1176pcs	1326pcs
	Office & site toilets	By putting on the desk	Aug-17	500pcs	3444pcs	3944pcs
Pamphlet	HIV Awareness session	By hand	11-Jul-17	100pcs	808pcs	908pcs
	Site Office	By hand	11-Jul-17	50pcs	558pcs	608pcs
	Office & site toilets	By putting on the desk	14-Jul-17	150pcs	750pcs	900pcs
Condom	Site Office	By hand	28-Sep-17	150pcs	1326pcs	1476pcs
	Office & site toilets	By putting on the desk	Sep-17	500pcs	3944pcs	4444pcs
Pamphlet	HIV Awareness session	By hand	28-Sep-17	200pcs	908pcs	1108pcs
	Site Office	By hand	30-Sep-17	100pcs	608pcs	708pcs

Item	Place of Distribution	Method of Distribution	Duration	Number	Previous Number	Accumulated Number
	Office & site toilets	By putting on the desk	30-Sep-17	100pcs	900pcs	1000pcs
Condom	Site Office	By hand	10-Feb-18	150pcs	1476pcs	1626pcs
	Office & site toilets	By putting on the desk	Feb-18	500pcs	4444pcs	4944pcs
Pamphlet	HIV Awareness session	By hand	10-Feb-18	200pcs	1108pcs	1308pcs
	Site Office	By hand	10-Feb-18	100pcs	708pcs	808pcs
	Office & site toilets	By putting on the desk	20-Sep-17	100pcs	1000pcs	1100pcs
Condom	Site Office	By hand	30.May-18	164pcs	1626pcs	1790pcs
	Office & site toilets	By putting on the desk	May-18	600pcs	4944pcs	5544pcs
Pamphlet	HIV Awareness session	By hand	30-May-18	150pcs	1308pcs	1458pcs
	Site Office	By hand	30-May-18	150pcs	808pcs	958pcs
	Office & site toilets	By putting on the desk	20-Sep-17	100pcs	1100pcs	1200pcs
	Site Office	By hand	14-Jun-18	110pcs	1790pcs	1900pcs
			22-Jun-18	150pcs	1900pcs	2050pcs
	Office & site toilets	By putting on the desk	15-Jun-18	300pcs	5544pcs	5844pcs
			30-Jun-18			

Screening, Diagnosis and Counseling

Item	Date	Venue	Number of Persons
Screening, Diagnosis and Counseling	8-Jun-16	Ratana Metta Organization' Clinic No.9(406), Lower Pazundaung Street, Pazundaung Township, Yangon, Myanmar	5 Persons
Screening, Diagnosis and Counseling	1-Aug-16	Ratana Metta Organization' Clinic No.9(406), Lower Pazundaung Street, Pazundaung Township, Yangon, Myanmar	6 Persons
Screening, Diagnosis and Counseling	26-Oct-16	Meeting Room (1), Toyo Site Office, 1st Floor, Plot 24, Thilawa Area, Thanlyin.	6 Persons
Screening, Diagnosis and Counseling	26-Oct-16	Thanlyin Sub-Center Office, Thanlyin General Hospital	6 Persons
Screening, Diagnosis and Counseling	28-Feb-17	Worker's Rest House, Toyo Site Area, Plot 24. Thilawa Area, Thanlyin Township	25 Persons
Screening, Diagnosis and Counseling	23-May-17	Worker's Rest House, Toyo Site Area, Plot 24. Thilawa Area, Thanlyin Township	23 Persons
Screening, Diagnosis and Counseling	11-Aug-17	Meeting Room (1), Toyo Site Office, 1st Floor, Plot 24, Thilawa Area, Thanlyin.	1 Person
Screening, Diagnosis and Counseling	28-Sep-17	Worker's Rest House, Toyo Site Area, Plot 24. Thilawa Area, Thanlyin Township	24 Persons
Screening, Diagnosis and Counseling	22-Feb-18	National AIDS Program, Thanlyin Sub-Center, Thanlyin Hospital Compound	2 Persons

Pre-Session and Post-Session Questionnaires for Grained Concept Evaluation

Date	Number of Attendance	Average Pre Result	Average Post Result	Total Gained Result
20-Jan-17	35 Persons	78.80%	89.20%	10.40%
28-Feb-17	49 Persons	66%	71.50%	5.50%
31-Mar-17	28 Persons	76.50%	91.30%	14.80%
23-May-17	28 Persons	70.20%	91%	20.80%
11-Aug-17	28 Persons	75.60%	98.20%	21.60%
28-Sep-17	52 Persons	57.50%	93%	35.50%
10-Feb-18	18 Persons	62.30%	76.70%	14.40%

Monitoring Form (Operation Phase)

The latest results of the below monitoring items shall be submitted to JICA for **periodically as noted** for the first 3 years after operation starts

—Water Quality (Treated drainage water)

To be submitted for **Quarterly Basis**

Item (Unit)	Measured value	Country's Standard* ¹	Referred Int'l Standard* ²	Target Value	Measurement Point* ³	Remark
Temperature(°C)		40	N/A	N/A		
Salinity		N/A	N/A	N/A		
pH		5~9	6~9	To be Set		
BOD (mg/L)		20~60	30	To be Set		
COD (mg/L)		N/A	125	To be Set		
Oil Contents (mg/L)		5	10	To be Set		
SS (mg/L)		30	50	To be Set		
Coliform Bacteria (MPN/100mL)		N/A	400	To be Set		

*1: Water and Air Pollution Control Plan (Ministry of Industry (1) Standing Order No.3, 21 August 1995)

*2: Environmental, Health, and Safety (EHS) Guidelines, International Finance Corporation

*3: At the outfall of drainage (2 points or more) and in front of the wharf (2 points or more, 2 layers)

—Water Quality (facility)

To be submitted for **Yearly Basis**

Item	Monitoring Result during Report Period
Maintenance condition for septic tank and oil separator, etc.	

—Waste

To be submitted for **Quarterly Basis**

Item	Monitoring Result during Report Period
Types, amount, disposal methods of wastes	

—Noise and Vibration

To be submitted for **Yearly Basis**

Item	Monitoring Result during Report Period
Maintenance conditions of vehicles	

Situation of consideration to the residents and road users (strict abidance of speed limit and avoidance of unnecessary revving/idling, etc.)	
---	--

—Water Use

To be submitted for Yearly Basis

Item	Monitoring Result during Report Period
Method of water supply and water consumption	

—Infectious diseases such as HIV/AIDS

To be submitted for Yearly Basis

Item	Monitoring Result during Report Period
Achievement of education for port workers on prevention against infectious diseases	

—Work Environment

To be submitted for Yearly Basis

Item	Monitoring Result during Report Period
Achievement of safety management plan to comply with safety standards for project site (e.g., safety training, periodical safety patrol, or safety meeting, etc.)	

—Accidents

To be submitted for Yearly Basis

Item	Monitoring Result during Report Period
Achievement of traffic safety management plan to comply with on-land and marine traffic regulation/rules for project (e.g., providing fence, sign board, or off-limits area of outsiders, and arrangement of guardsman or security boat, etc.)	

Monitoring Form (Land Acquisition)

Public Consultation

No.	Date	Place	Attendance	Contents of Consultation /Main Comments and Answers
1	15/Feb/2013	Project Site	PAP(3),MPA	Explanation of the Project outline, Due Diligence and Policy for land acquisition. Declaration of the Cut-off date.
2	1/Jul/ 2013	MPA	PAP:(about 200) Yangon local authority, Media, MPA	Briefing of the project, Hearing affected persons' opinions
3	8/Jul/2013	MPA	Representatives of PAP(8), MPA	Exchange of opinions with representatives of the affected persons
4	30/Aug/2013	MPA	Representatives of PAP(20), MPA	Briefing of survey results carried out by MPA Confirmation of the list of the affected persons
5	22/June/2015	MPA	Representatives of PAP(8), MPA	The meeting for additional assistance for Farmers
6	10/July/2015	MPA	PAPs, MPA	Deliver agreed amount of additional assistance of PAPs for Plot 25-26
7	11/Dec/2015	MPA	PAPs, MPA	Deliver agreed amount of additional assistance of PAPs for Plot 24

Land Acquisition (Surrender of Land) Implementation

Land Acquisition Activities	Planned Total	Unit	Progress in Q'ty			Progress in %		Expected Date of Completion
			During the Quarter	Till the Last Quarter	Up to the Quarter	Till the Last Quarter	Up to the Quarter	
Progress of Cash Assistance								
Plot 25-26	8	Person	0	8	8	100	100	
Plot 24	4	Person	4	0	4	0	100	
Progress of Land Acquisition								
Plot 25-26	63	Acre	0	63	63	100	100	
Plot 24	30	Acre	30	0	30	0	100	

HHs: Households

Grievance Redress

No.	Date	Contents of Grievance and Resolution
1		
2		