

# JICA Data Collection Survey on Corridor Development in Africa

Deloitte Tohmatsu Financial Advisory LLC + CTI Engineering International Co., Ltd.



## 1. Changes of Environment surrounding Corridor Development in Africa

- Rising consciousness on global agenda such as SDGs
- Stronger cross-border coordination and collaboration
- Expectations for new roles of private sector
- Business model transformation by ICT
- Effects of COVID-19

# JICA Data Collection Survey on Corridor Development in Africa



Deloitte Tohmatsu Financial Advisory LLC + CTI Engineering International Co., Ltd.

## 2. Impact Assessment: Key Findings

- (+) Travel time/cost savings through improved gateways and OSBPs
- (+) Higher transport efficiency by ICT solutions
- (+) Emergence of new private sector entities such as SMEs and Start-ups
- (-) Underutilization of infrastructure database
- (-) Smaller impact on inland countries/cities
- (-) Potential risk of “Digital Divide”

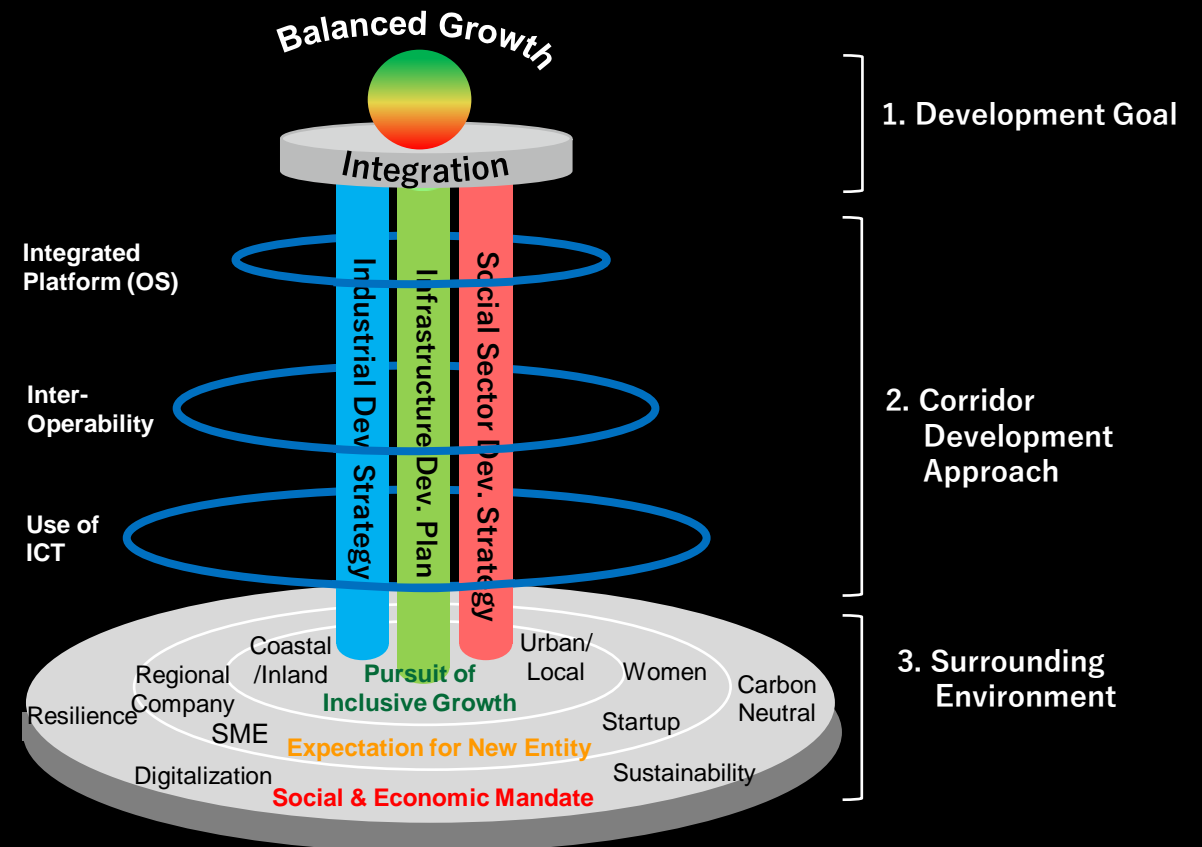
# JICA Data Collection Survey on Corridor Development in Africa



Deloitte Tohmatu Financial Advisory LLC + CTI Engineering International Co., Ltd.

## 3. Proposed Approach of Corridor Development Version 2.0

- Articulation of Goal
- JICA's Emphasis on 3 Pillars
- Steps of Strategic Use of ICT
- Consideration of Changing Environment
  - ✓ Pursuits of Inclusive Growth
  - ✓ Expectation for New Entity
  - ✓ Social & Economic Mandate
- Structuring of Goal, Approach, and Env.



Source: JICA Study Team

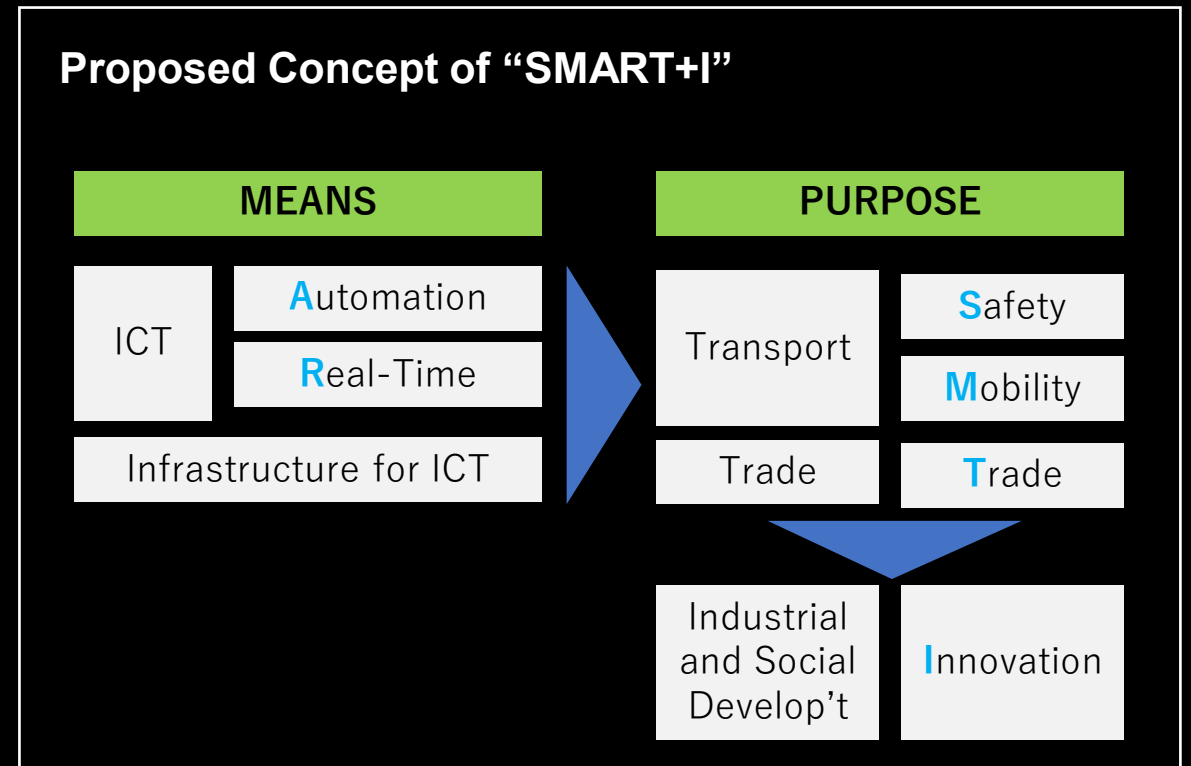
# JICA Data Collection Survey on Corridor Development in Africa



Deloitte Tohmatsu Financial Advisory LLC + CTI Engineering International Co., Ltd.

## 4. Strategic Use of ICT in Corridor Development

- Real-time traffic monitoring and control
- Automated toll collection
- Advanced data-driven O&M
- Efficiency improvement of O&M field works
- Electronification of border procedures
- Electronic payment
- Sophistication of crackdown
- Digital traceability



Source: JICA Study Team