

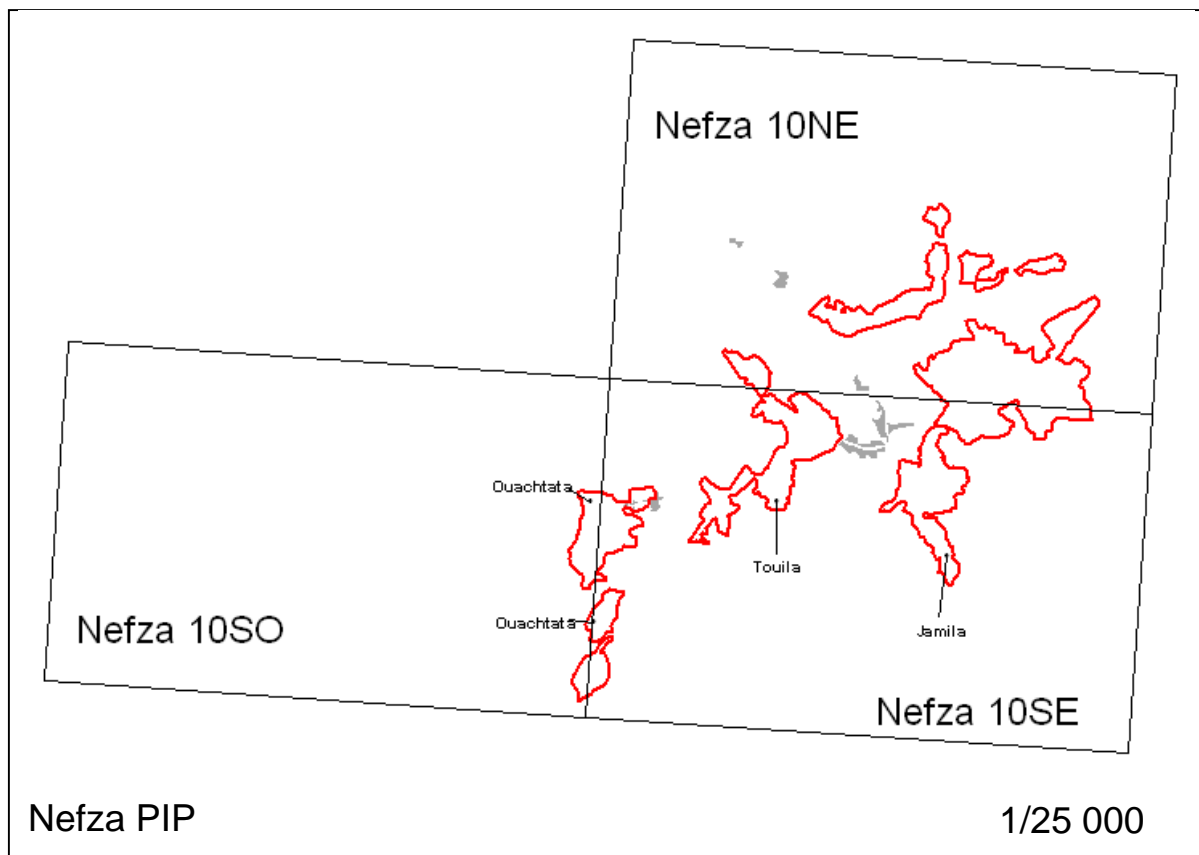
I - Consulted documents and studies for TS-P7 mid-term evaluation

I.1 - Consulted cartographic documents

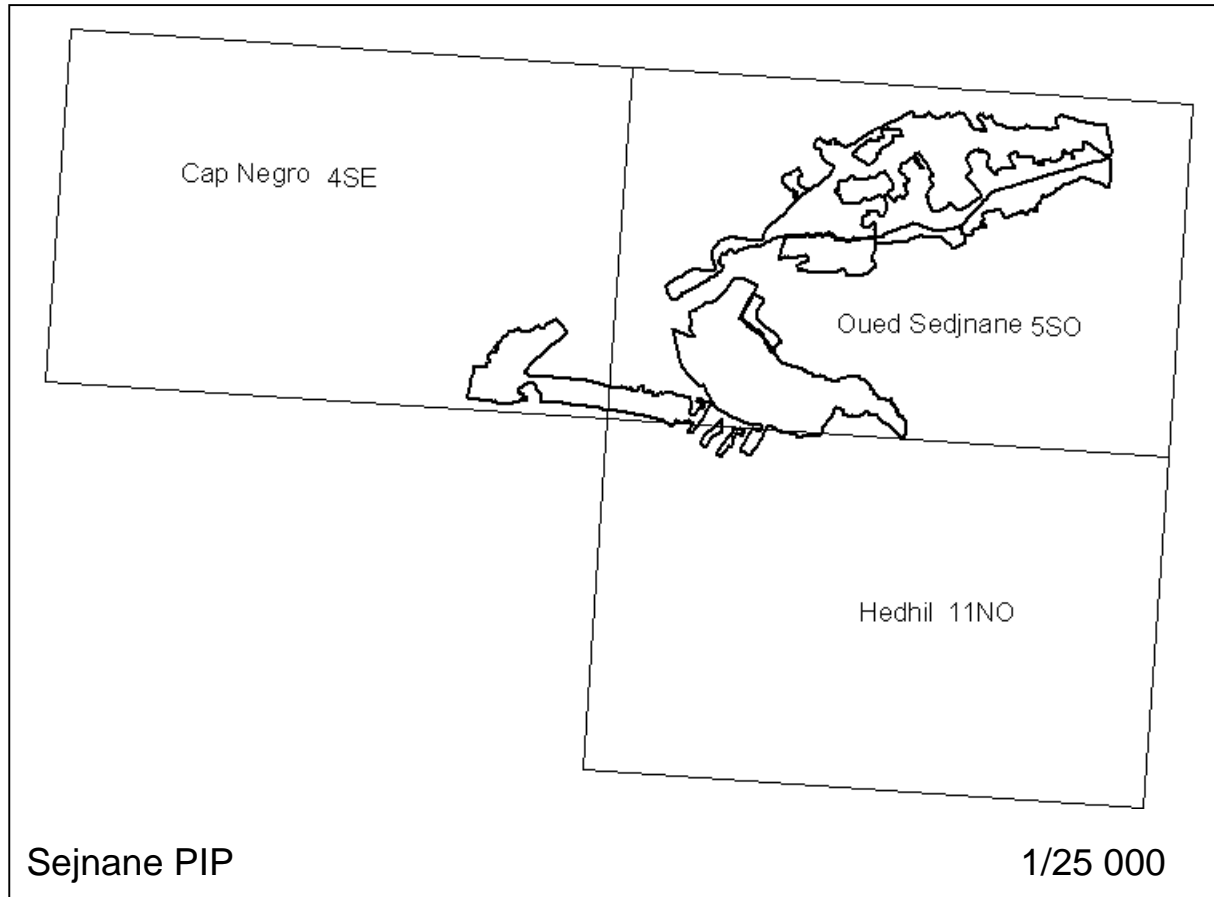
I.1.1 - Ordnance Survey Maps

The Ordnance Survey Maps realized by the OTC which covers realised installations are 2 on the scale 1/25.000th :

- the maps 10 NE, SE et SO for the Nefza perimeter, whose assembly is presented hereafter.



- The maps 4 SE, 5 SO et 11 NO for the Sejnane perimeter, whose assembly is presented hereafter.



I.1.2 - Thematic maps

The used thematic maps are of several types. The bio-climatic map of northern Tunisia, published to the 1/750.000th permitted to characterize the bio-climatic Mediterranean stage to which the plains of Nefza and Sejnane belongs.

Several pedological maps provided by the Grounds Directory was used, which have been dragged from :

- the pedological study of the Nefza RDU, at the 1/200.000th scale ;
- the pedological study of the Jbel Abiodh, at the 1/50.000th scale ;
- the pedological study of the El-Ali, El-Ksir, El Guetma, Zbissa, Oum-Inib-Segman I et Segman II Henchirs, at the 1/20.000th scale ;
- the pedological study of the Sejnane RDU, part South-West, at the 1/50.000th scale ;
- the pedological study of the Sejnane RDU (zone IV) , at the 1/10.000th scale ;
- the pedological study of the M'sad Henchir, at the 1/10.000th scale ;
- the pedological study of the Sejnane perimeter, at the 1/50.000th scale enlarged at the 1/25.000th scale.

I.1.3 - Plan of sets of the hydraulic networks, networks of tracks and drainage

The two maps presented in Chapter 3 locate the various installed networks in Nefza and Sejnane perimeters.

In the field of hydraulic installations, five computerized Autocad files, representing the verification plans of the hydraulic and the tracks networks of each sector of Nefza perimeter (Jmila, Bouzenna, Touila, Ouechtata and the extension of Negro Cape), were delivered by the Project Unit.

Moreover, a provisional verification plan of irrigation, of drainage and of tracks networks of Sejnane perimeter were provided by the Project Unit.

I.2 - Consulted Regional Agricultural Map

The Nefza plain belonging to the Administrative Division of Béja and the Sejnane plain to the Administrative Division of Bizerte, in fact the Regional Agricultural Maps from these two Administrative Divisions, published at the scale 1/25.000th, were consulted.

I.3 - Former collected studies of the Project

I.3.1 - Strategic studies consulted

The strategic studies which were consulted correspond to the following documents :

- Project of Development of the Water Resources of the Northern Tunisia – Report of completion – SCET-Tunisia - BRL – December 2004 ;
- Country profiles on environment Tunisia – JICA – February 2002 ;
- Guide for the dryness management practises in Tunisia – Agriculture and Hydraulic Resources Ministry – December 1999 ;
- Water XXI Strategy of the sector of water in long-term Tunisia 2030 – Agriculture and Hydraulic Resources Ministry - May 1998.

I.3.2 - Feasability studies of the Project

The feasibility studies of the perimeters of Sejnane and Nefza which were consulted correspond to the following documents :

- Project of creation of irrigated perimeters starting from the Sidi El Barrak dam, *Feasability file* CNEA, April 1995 ;
- Project of creation of the Sidi El Barrak dam, *techno-economic Justification* brought up to date study, CNEA, November 1992 ;
- Perimeters of irrigation of Sidi El Barrak : *technical synthesis Report* GD/DLHW, August 1991 ;
- Comparative agronomic study of the plains to be submerged by the stopping " Sidi El Barrak " and Sejnane, *Choice of an alternative* CNEA, Project FAO /TUN 72004, 1978.

I.3.3 - Detailed Studies of the perimeters

The Detailed studies which were consulted correspond to following volumes of the document entitled "Installation of the irrigated public perimeters starting from waters of the Sidi El Barrak dam, irrigated perimeters of Nefza and Sejnane" :

- *Study of Preparatory Detailed project* of the Nefza perimeter, STUDI, final edition, November 1997 ;
- *Study of Preparatory Detailed project* of the Sejnane perimeter, STUDI, final edition, September 1998.

Moreover, the study of a Project of adjustment of a windscreen network in the Sejnane irrigated Perimeter – December 2002, was consulted.

I.3.4 - Evaluation Studies

Several documents of missions carried out within the framework of SAPROF Program were consulted :

- Installation of the Nefza PPI, *Report of follow-up of the project to the 30-04-2003 Mission SAPROF of 15-5-2003*
- " Program of realization ", special Assistance for the Project establishment (SAPROF) of adjustment of the water resources of the North of Tunisia, SAPROF Team, Fund of Economic Co-operation – overseas (OECE) of Japan, Mars 1995.
- Special assistance of project formation (SAPROF) for water resources development, project in North Tunisia " Final Report ". I APPENDICES, SAPROF TEAM for Overseas Economic Fund Co-operation, Japan, March 1995.
- Special assistance for project formation (SAPROF) for water resources development, project in North Tunisia " Final Report ". II APPENDICES, SAPROF TEAM for Overseas Economic Fund Co-operation, Japan, March 1995.

I.3.5 - Studies of regrouping

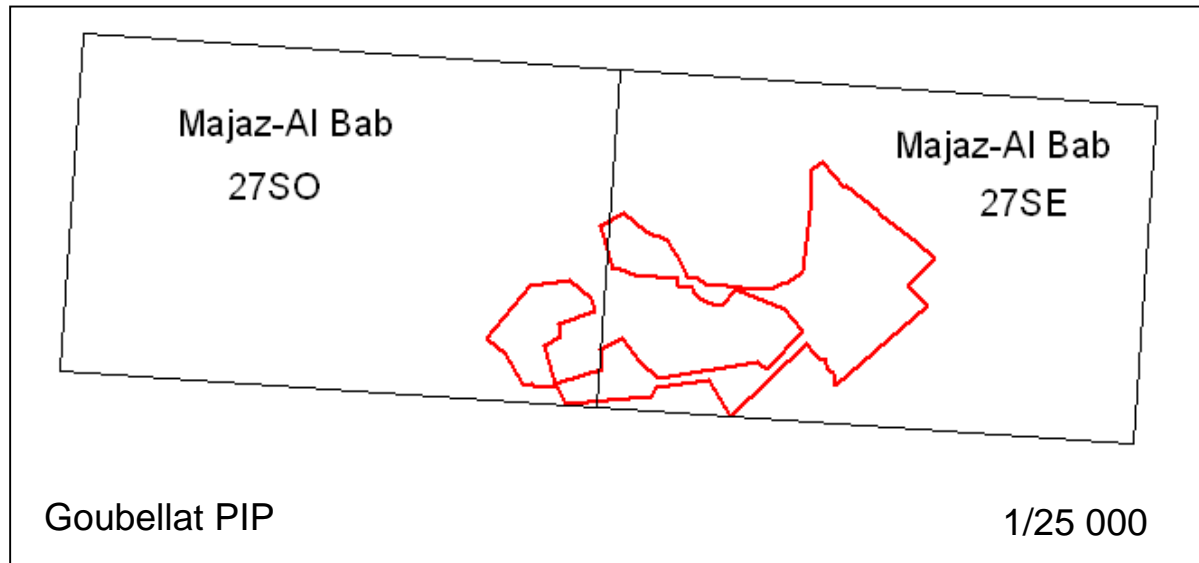
The AFA started into 2000 the studies of compartmental regrouping of the grounds to arrange, which is about to be completed in Nefza, but is still being negotiated on certain sectors of Sejnane.

II - Consulted documents and studies for TS-P11 mid-term evaluation

II.1 - Consulted cartographic documents

II.1.1 - Ordnance Survey Maps

The Ordnance Survey Maps realized by the OTC which covers realised installations are 2 on the scale 1/25.000th : charts 27 SO and 27 SE, whose assembly is presented hereafter.



II.1.2 - Thematic charts

The used thematic charts are of several types. The bio-climatic chart of northern Tunisia, published to the 1/750.000th permitted to characterize the bio-climatic Mediterranean stage to which the plain of Goubellat belongs. The pedological chart of the Goubellat URD, at the scale 1/200.000th and provided by the Grounds Directory, was used.

II.1.3 - Plan of the hydraulic, tracks and drainage networks

The map presented in Chapter 3 locates the various installed networks in Goubellat perimeter.

II.2 - Consulted Regional Agricultural Map

The plain of Goubellat belonging to the Division of Béja, the Regional Agricultural Map of this Division, published at the scale 1/25.000th, was consulted.

II.3 - Former collected studies of the Goubellat perimeter

II.3.1 - Strategic studies consulted

The strategic studies which were consulted correspond to the following documents :

- Country profile on environment Tunisia – JICA – February 2002 ;
- Guide for the dryness management practises in Tunisia – Agriculture and Hydraulic Resources Ministry – December 1999 ;
- Water XXI Strategy of the sector of water in long-term Tunisia 2030 – Agriculture and Hydraulic Resources Ministry - May 1998.

II.3.2 - Feasability study of the Project

The feasibility study of Goubellat perimeter which was consulted corresponds to volume “ *Agro-economic Study* ” of the study of hydro agricultural Installation of the “ Goubellat ” perimeter realized by SERAH and published in October 1996.

II.3.3 - Detailed Studies of the Goubellat perimeter

The detailed study of Goubellat perimeter which were consulted correspond to :

- the document entitled “ Hydro agricultural Installation of the Goubellat perimeter, SERAH, Detailed study ”, with following volumes :
 - Volume 2 : Hydraulic appendice A1 - Infrastructure of water transfer from Mejerdah to the Goubellat perimeter, October 1994 ;
 - Volume 2 : Hydraulic appendice A2 - Infrastructure of distribution, October 1994 ;
 - Volume 2 : Hydraulic appendice A3 - Cleansing of the project zone, October 1994 ;
 - Volume 3 : Hydraulic infrastructure inside the perimeter, final, December 1993 ;
 - Volume 4 : Transfer water pipe from Medjerdah to Goubellat perimeter, geo-technical recognition, December 1993 ;
- the document entitled “ Hydro agricultural Installation of the Goubellat perimeter, SERAH, Detailed study ”, with following volumes :

II.3.4 - Evaluation Study

The Japanese evaluation study of the Goubellat perimeter which was consulted corresponds to volume entitled “ Goubellat irrigation Project – Appraisal Documents ”, published in October 1996.

II.3.5 - Regrouping study

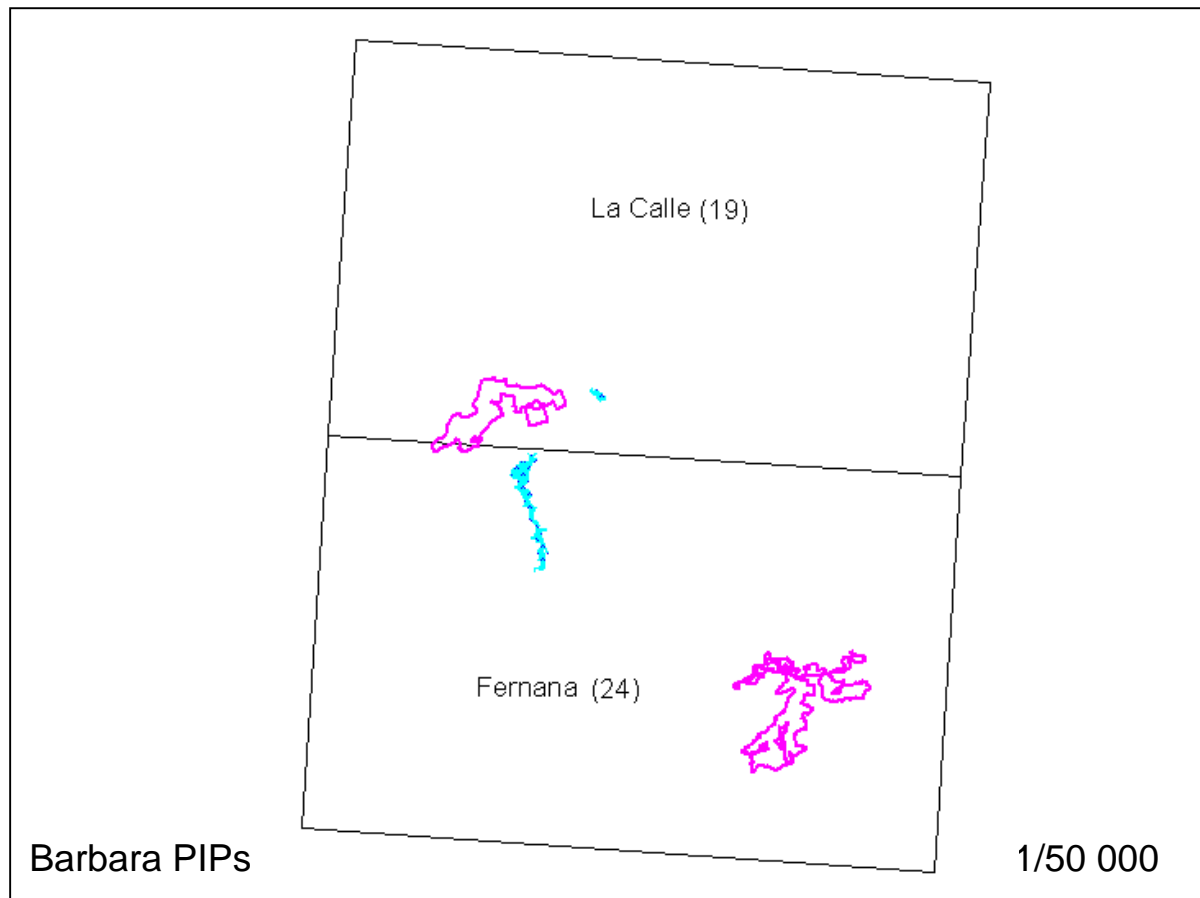
The AFA realized from 2000 to 2004 the study of regrouping of the perimeter, which is today at the end of the second phase.

III - Consulted documents and studies for TS-P13 mid-term evaluation

III.1 - Consulted cartographic documents

III.1.1 - Ordnance Survey Maps

The Ordnance Survey Maps realized by the OTC on the scale 1/25.000th which covers all realised installations by the TS-P13 Project are two, the maps 19 and 24, whose assembly is presented hereafter.



III.1.2 - Thematic maps

The used thematic maps are of several types. The bio-climatic map of Northern Tunisia, published on scale 1/750,000th allowed to characterize the Mediterranean bio-climatic stage to which belong the two concerned with hydraulic installations plains of Fernana and Hammam Bourguiba.

A pedological map provided by the Grounds Directory was used : the pedological map of the valley of the river Barbara published on scale 1/50,000th.

III.1.3 - Plan of sets of the hydraulic, tracks and drainage networks

On the level of hydraulic installations, plans of verification of the irrigation networks of the two perimeters, as well as the tracks networks of the Hammam Bourguiba perimeter, were provided by the Unit of project based in Fernana.

The two maps presented in chapter 3 locate the various installed networks in Fernana and Hammam Bourguiba perimeters.

III.2 - Regional Agricultural Map

The Fernana and Hammam Bourguiba plains belonging to the Administrative Division of Jendouba, the Regional Agricultural Maps from this Administrative Division, published on the scale 1/25.000th, which was consulted.

III.3 - Former collected studies of the Project

III.3.1 - Strategic studies consulted

The strategic studies which were consulted correspond to the following documents :

- Project of Development of the Water Resources of the Northern Tunisia – Report of completion – SCET-Tunisia - BRL – December 2004 ;
- Country profiles on environment Tunisia – JICA – February 2002 ;
- Guide for the dryness management practises in Tunisia – Agriculture and Hydraulic Resources Ministry – December 1999 ;
- Water XXI Strategy of the sector of water in long-term Tunisia 2030 – Agriculture and Hydraulic Resources Ministry - May 1998.

III.3.2 - Feasability studies of the project

The feasibility study of the Fernana and Hammam Bourguiba perimeters which was consulted corresponds to the document " Project of creation of an irrigated perimeter starting from the Barbara water dam : *Study of feasibility* produced by the NCAS (National Centre of Agricultural Studies) on July 1996.

III.3.3 - Detailed Study of the perimeters

The Detailed study which was consulted corresponds to the document entitled detailed Study of the irrigated perimeter starting from the Barbara stopping, produced by SCET TUNISIA in July 1998.

III.3.4 - Evaluation Study

Several documents of missions carried out within the framework of SAPROF Program which was consulted corresponds to " Program of realization ", special Assistance for the Project establishment (SAPROF) of adjustment of the water resources of the North of Tunisia, SAPROF Team, Fund of Economic Co-operation –overseas (OECF) of Japan, Mars 1995.

III.3.5 - Regrouping study

The AFA started in 2000 the studies of compartmental regrouping of the grounds to arrange, which is a about to be completed in Fernana, but is in a complete blocking situation in Hammam Bourguiba.