

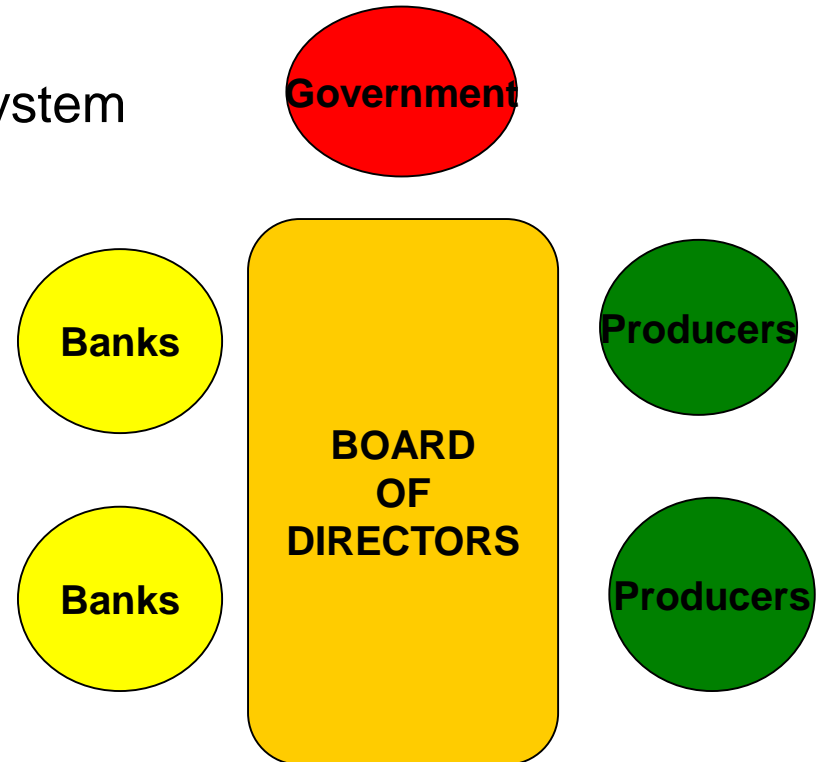


*WHO WE ARE AND WHAT WE DO*

February 2020

- Corporación Bananera Nacional, S.A. (CORBANA) is the governing agency for banana agribusiness of Costa Rica.
- A public non-governmental entity that represents Costa Rican banana producers.

- CORBANA holds a corporate base being made up of three sectors:
  - a) The Government of the Republic
  - b) The Banks of the National Banking System
  - c) The banana producers

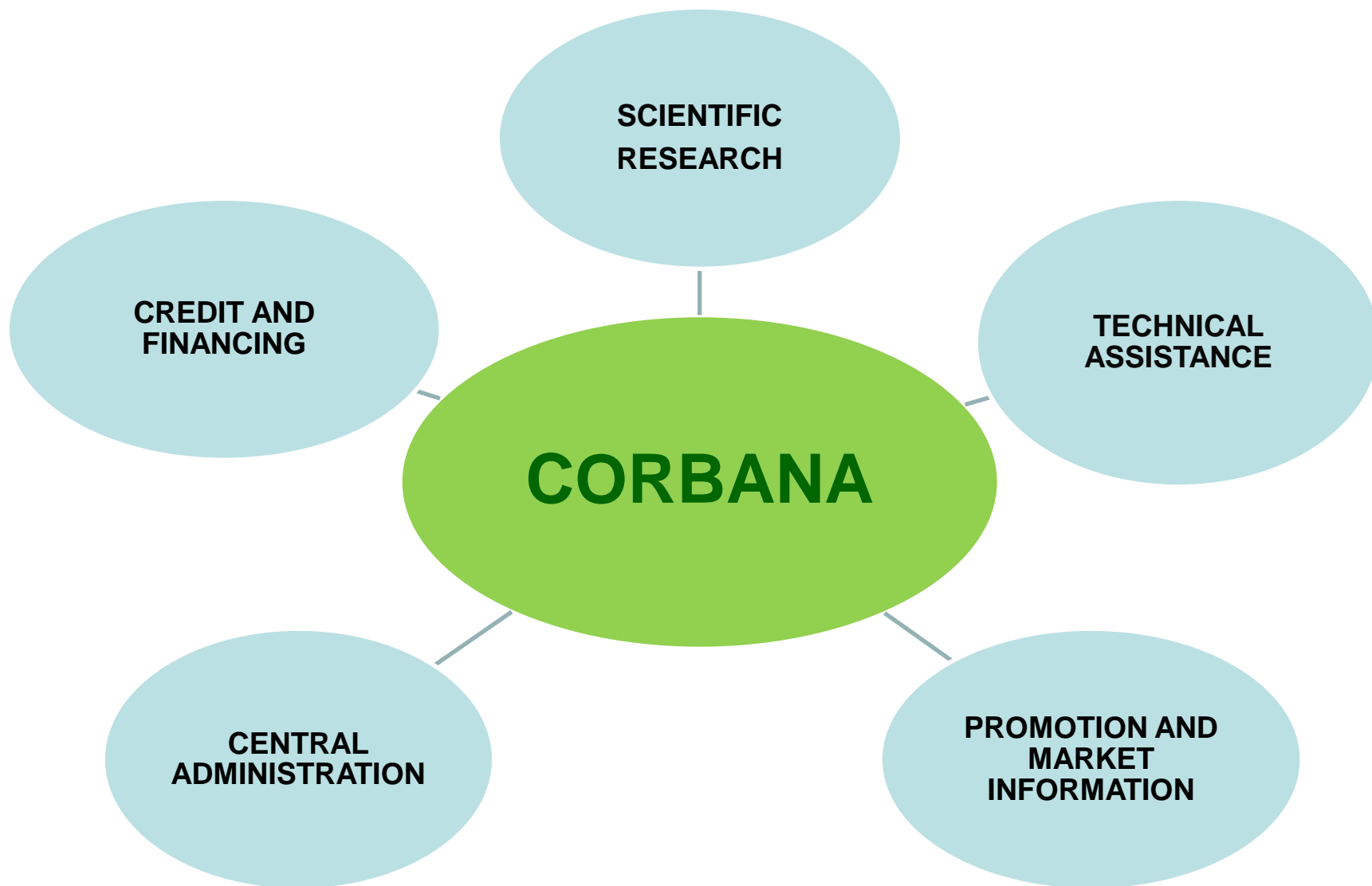


# OBJECTIVE

## PROMOTE BANANA DEVELOPMENT

- **Research and develop new production technologies.**
- **Offer research services and technical assistance to producers.**
- **Extend credit to producers.**
- **Foster and maintain equitable relations between domestic producers and trading companies.**
- **Promote socially and environmentally friendly production techniques.**
- **Advise the Government of the Republic on banana production issues, in both national and international policy-making (negotiations).**
- **Provide reliable statistics and market information to the sector and the country.**

# ***AREAS OF WORK***



# CORBANA RESEARCH CENTER



## RESEARCH:

- \*Fertility and nutrition
- \*Agrophysiology
- \*Plant pathology
- \*Biological control
- \*Nematology
- \*Molecular biology
- \*Biotechnology
- \*Soil microbiology
- \*Environmental protection





# CROP PRODUCTION CONCERNS

Insect pests: mealybugs, black weevil, scales



Soil heath: acidification, pH, microbiology





# ***Economic and social contribution of the banana sector***

# *Economic and social contribution of the banana sector*



## ***Costa Rica Economic Benefits of the Banana Sector***

| ITEM  | CONTRIBUTION |
|---|--------------|
| FOB Value<br>(Millions US\$)                                    | US\$903      |
| Share of Total Exports  | 8,01%        |
| Share of Agricultural Exports                                   | 35,2%        |
| Share of Total GDP – (Gross Domestic Product)                   | 2.2%         |
| Share of Agricultural GDP                                       | 33.8%        |
| Generates employment in E.A.P. (economically active population) | 6.3%         |

**SOURCE:** Statistics Office, CORBANA, S.A. and Central Bank of Costa Rica.

# ***JOBS GENERATED***

- **Direct employment : 40,000**
- **Indirect employment: 100,000**







***99% of the banana area has at least  
one certification***



**GLOBALG.A.P.**



# ***Environmental Commitment 92***

- Organic and solid Waste management:
  - Raquis
  - Rejected banana
  - Fruit bag
  - Polypropilene twine
- Packing plant residual water management
- Agrochemical safe management.



**BANANA  
ENVIRONMENTAL  
COMMISSION**



# *Organic Material*

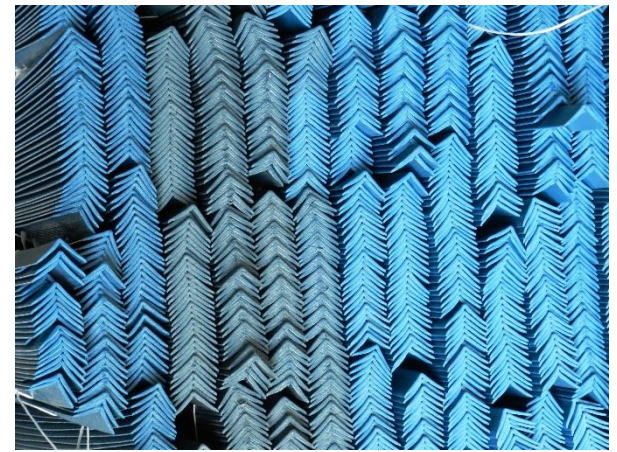


Incorporated at the soil





# *Recycling bag and rope*



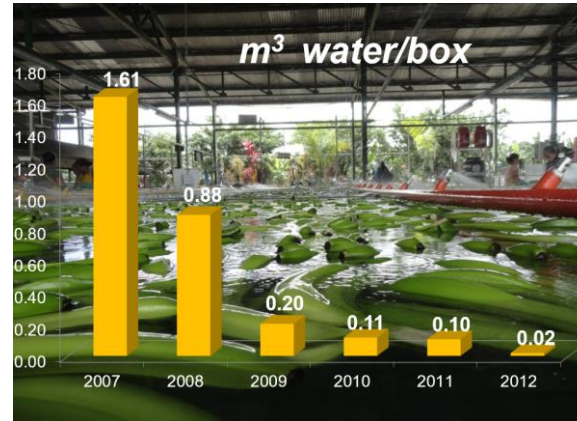
**+ 57 millions kg**

**90 millions cornerbacks.**





# *water management and recirculation*

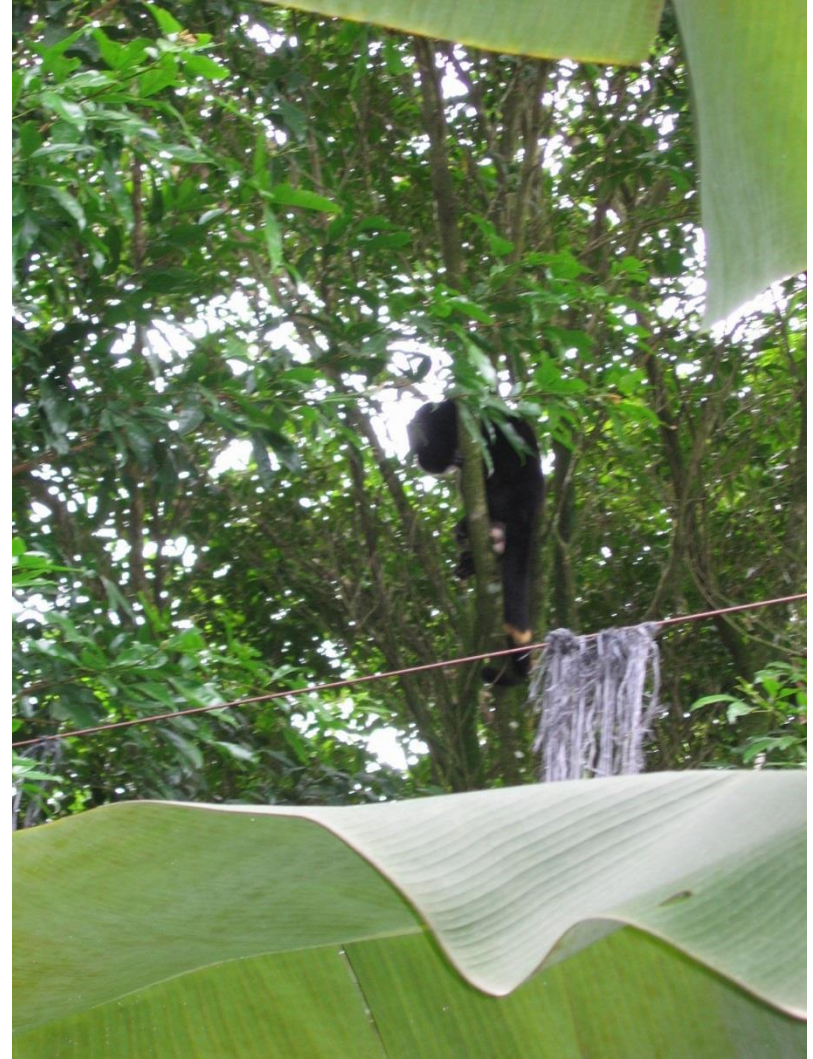
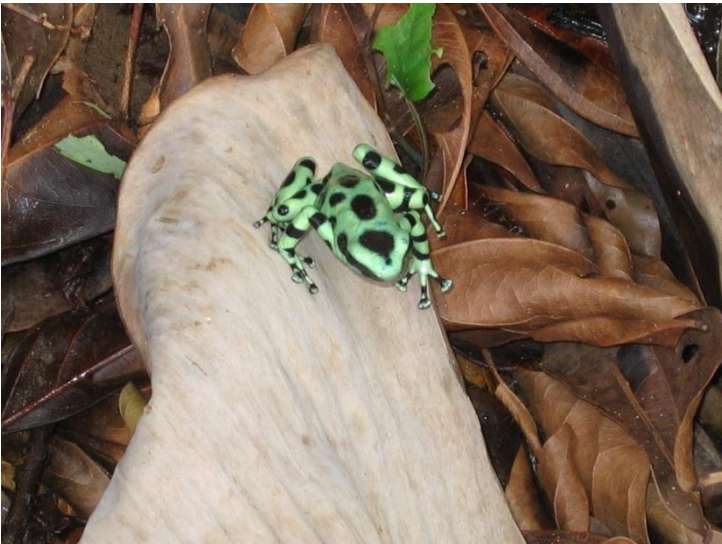


• Forest and  
protecting areas

+ 10.000 hectáreas



# *Biodiversity in banana farm*



# ***SUSTAINABILITY differentiation***

## ***“Banano de Costa Rica”***

It is important how our banana tastes or looks, but it is most important how it is produced – in an ever more sustainable way



# Thank You

