

JICA Clean City Initiative International Seminar 2023



University's Role in International Cooperation

Professor Hidetoshi Kitawaki

Faculty of Global and Regional Studies, Toyo University

5-28-20, Hakusan, Bunkyo-ku, Tokyo 112-8606 Japan

URL: <https://kitawakitoyo.wixsite.com/kitawaki-lab>



Contents

- 1. University's Mission and Capacity**
- 2. Educational Function of University**
- 3. Research Function of University**
- 4. University's Contribution to the Society
(International Cooperation)**



1. University's Mission and Capacity

1.1 University's Mission (by MEXT)

- Education:
To Produce Human Resources
- Research:
Develop Technology
- Contribution to the Society
International Cooperation



1.2 University's Capacity

- Flexibility Compared with Practitioners
- Diversity in: Research Topics and Period, Geological Area, Students
Academic/practical
- Intersectoral Activities, Collaboration with Various Stakeholders
(GO, NGO, Business, Other Universities etc.)
- University: Focal point of Expertise, Knowledge, Human Network
No Rotation of Faculty Members: Accumulation of knowledge



2. Educational Function of University

2.1 Types of Education Related to University

- Formal Education
 - Undergraduate Level
 - Graduate School
 - Special Educational Programs
- Informal Education
 - in Collaboration with Other Entities
 - Group Training Courses
 - Workshops, Symposia etc.



2.2 Undergraduate Education

Undergraduate Education: Provide "Discipline" to students
Provision of Lectures Related to International Cooperation
e.g. Lectures offered in the Faculty of Global and Regional
Development

- Water Supply and Sanitation for Health
- Appropriate Technology for Environmental Management
- Introduction to International Environmental Planning



Water Supply and Sanitation for Health/ Japanese Experiences on Environmental Management

1. Introduction

- Sub-title : Adapting Japanese environmental experiences to developing countries
- Timing : Academic year 2022, Spring semester
Tuesdays 5th period (Face-to-face)
- Teaching staff: Professor Hidetoshi Kitawaki

URL: <https://kitawakitoyo.wixsite.com/Kitawaki-lab>

e-mail : Kitawaki@toyo.jp

Office : No.12 Lab., No 8 Bldg, Hakusan Campus



Introduction of intermediate treatment and separate collection

- To extend useful time of landfill site, solid waste is treated to reduce disposal rates
- Incinerators, crushers and recycling system are introduced
- Separate collection is required for efficient treatment and recycle

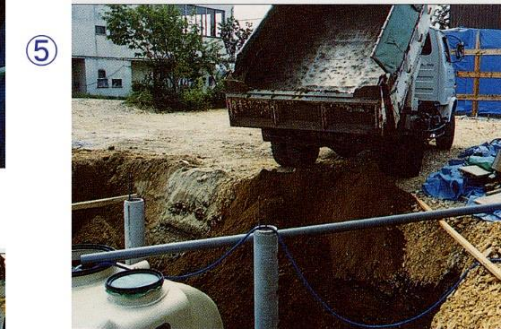
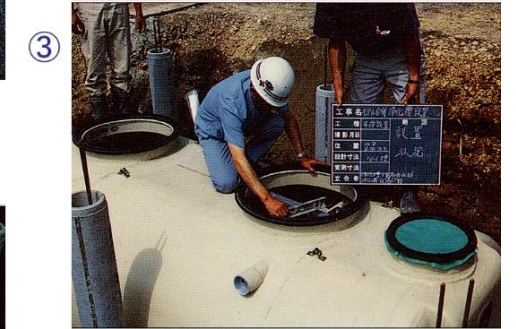
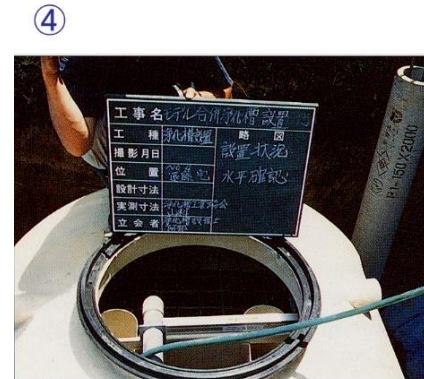


Osaka Bay Phoenix Center



Small-scale Johkasou

- Good for the treatment of wastewater for a single household (minimum 5 persons)
- Installation takes only a short time (Construction process is shown right)
- Needed space is the same as a parking space of a car



2.3 Education in Graduate School

Capacity Development of Experts

Japanese Students (Experts of International Cooperation)

JICA Staff, Consultants, JOCV, Government Employees etc.

Teach Theories of Technology Transfer

Special Educational Program

PRING (Support Program for Pioneering Research Institute by the Next Generation Researchers)



Support Program for Pioneering Research Initiated by the Next Generation Researchers in Toyo University Doctoral Course

Capacity Development Project towards Social Implementation of Academic Knowledge on Human Security



Project Manager

Hidetoshi Kitawaki

Professor, Faculty of Global and Regional Studies
Director, Center for Sustainable Development Studies



2.3 Education in Graduate School (Cont.)

Foreign Students (Staff in Recipient Countries)

Transfer of Japanese Technology

Japanese Experiences in Water Supply, SWM

Textbooks are Prepared with JICA

Courses for Foreign Scholarship Students

JDS (The Project for Human Resource Development Scholarship)

ABE Initiative, SDGs Global Leader, PACIFIC Leads etc.



Field Visits from Qualitative Research Skills Class

Field Visit @ Iwate pref.(2018)

Field visit @ Yamanashi pref.(2021)



3. Research Function of University

3.1 Invention to Innovation

Invention → Expansion → Innovation

Basic Research (University, Research Institute)

→ R&D in Japan (Univ.+ Business)

→ Technical Cooperation (Aid Agencies+Business)

→ Expansion (Business)



3.2 Appropriate Technology and It's Transfer

Technically Viable, Economically Feasible,

Culturally Accepted, Environmentally Sound

- Not Adopt but Adapt, Reverse Innovation, Leap Frog
- Consider Constraints in Dev. Countries
- Intersectoral Research Entities Required

Center for Sustainable Development Studies (Toyo Univ.)

Appropriate Technology Forum Japan <https://atfj.jp/>



4. University's Contribution to the Society (International Cooperation)

4.1 Support to International Cooperation

Proponent of International Cooperation Schemes

Dispatch Faculty Members as Experts

Organizing Group Training Courses

ADB-I-Toyo University Course on CWIS

Co-education of Foreign Experts and Scholarship Students



4.2 Partnership with Univ., Private Sector and ODA

Project Finding/Formation

Feasibility Study Funded by GOJ

Many Stakeholders in Tech. Cooperation

Donner, Recipient, Business, University

Let's Make Winning Combination



Pilot Project in Dominican Republic



4.3 Alumni and Human Network in University

All types of stakeholders in Alumni

Counter Partners Easily Found

"Friends Who Ate from the Same Pot (Japanese Phrase)"

"Lived under the same roof(English Phrase)"

- Can Make Collaboration for Long



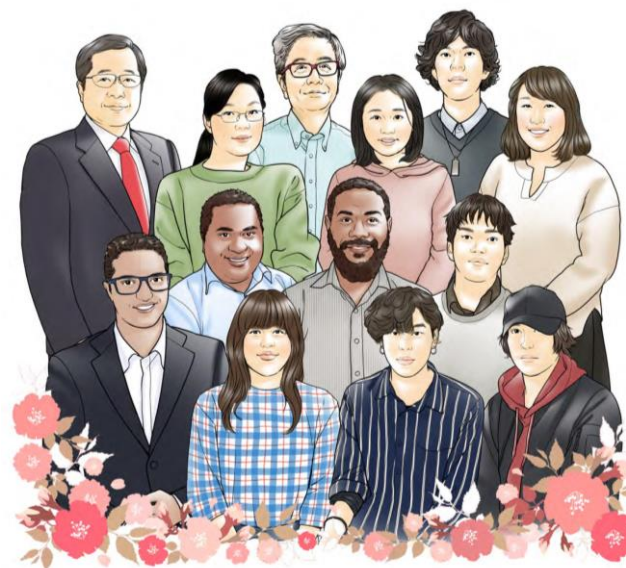
Thank You



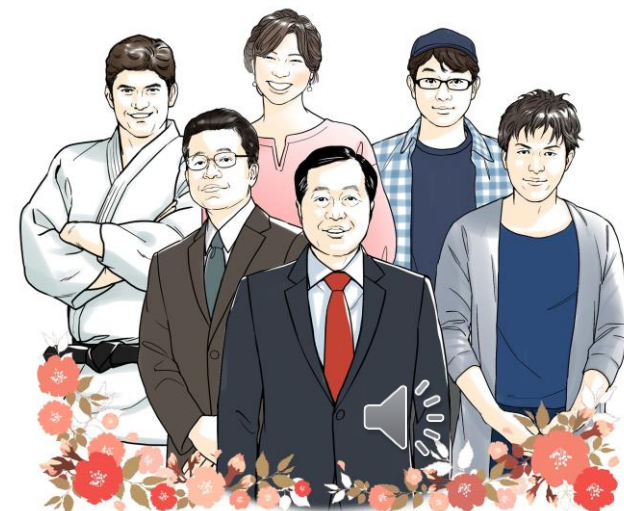
2022



2021



2020



2019