

Country Gender Profile Nigeria

Final Report

March 2011

Japan International Cooperation Agency (JICA)
Public Policy Department

Mitsubishi UFJ Research & Consulting Co., Ltd.

Table of contents

Nigeria

| | |
|--|----|
| Table of contents..... | ii |
| Summary | iv |
| List of Abbreviations | vi |
| 1. Basic Profiles | 1 |
| 1-1 Socio-Economic Profile | 1 |
| 1-2 Health Profile..... | 3 |
| 1-3 Education Profile | 4 |
| 2. General Situation of Women and Government Policy on Gender | 5 |
| 2-1 General Situation of Women in Nigeria | 5 |
| [General situation] | 5 |
| [Violence against women] | 6 |
| [Low presentation in key decision making positions in the government]..... | 7 |
| [Issues originated in religions and traditional customs]..... | 8 |
| 2-2 Government Policy on Gender | 10 |
| [Government Policy on Women] | 10 |
| [Development Plan for Women] | 11 |
| [Gender-related laws and regulations] | 12 |
| 2-3 National Machinery | 14 |
| [Background] | 14 |
| [National machinery] | 14 |
| [Organization chart] | 15 |
| [Main activities of Federal Ministry of Women Affairs and Social Development]..... | 15 |
| [The Activities of Other ministries and government offices at local levels.]..... | 16 |
| 3. Current Situation of Women by Sector..... | 18 |
| 3-1 Education | 18 |
| [Government Policy]..... | 18 |
| [Primary education] | 19 |
| [Secondary education] | 22 |
| [Tertiary education] | 22 |
| [Literacy education] | 22 |
| [Vocational and Technical education, Higher education] | 23 |
| 3-2 Health | 24 |
| [Governmental policy] | 24 |

| | |
|---|----|
| [Medical health] | 25 |
| [Nutrient state] | 25 |
| [Family planning] | 26 |
| [HIV/AIDS] | 27 |
| 3-3 Agriculture, Forestry and Fisheries | 29 |
| [Agricultural Policy and Gender]..... | 29 |
| [Rural life and gender] | 29 |
| [Support system for women workers] | 30 |
| 3-4 Economic Activities | 33 |
| [Employment opportunities] | 33 |
| [Women workers in public and private sector] | 34 |
| [Support system for women workers] | 35 |
| [Informal sector] | 36 |
| [Support for micro enterprises] | 36 |
| [Migration] | 36 |
| 4. Gender issues which should be particularly taken into consideration in future JICA and other donors/NGO's intervention in Nigeria..... | 39 |
| 5. On-going Gender Projects..... | 41 |
| 5-1. International Organisation | 42 |
| 5-2. Bilateral Donors..... | 43 |
| 5-3. NGO | 43 |
| 6. Gender Information Sources | 48 |
| 6-1 List of Organisations related to Gender..... | 48 |
| 6-2 List of Reports and references related Gender..... | 50 |
| 7. Definitions | 52 |

Summary

| Country Gender Profile: Summary (Nigeria) |
|--|
| Current Situation of Women in Nigeria |
| <p>In spite of high economic growth, about 70 percent of the population lives on less than 1 US dollar per day. Female poverty rate is particularly high in Nigeria because of race, religion and socio-political backgrounds. There are many challenges to be addressed which arise from traditional customs, and require donors and international institutions support.</p> <p>In development strategies, it is clearly indicated that gender equality is one of prioritized areas in Nigeria, and the gender budget is currently under consideration.</p> <p>The percentage of women who have ever suffered from violence inflicted on them is 30 percent on average. The percentage is particularly high among the group who are widowed or divorced, and/or living in urban areas. It is acknowledged and broadly accepted in Nigerian society that it is a punishable act for husband to beat wife.</p> <p>Participation of women to the political field remains low. However, the <i>Human Development Report 2009</i> indicated that the percentage of female at the ministerial level is higher than Japan (23% in Nigeria and 12% in Japan). In this regard, Nigerian women participation in the political area might be advanced to Japanese situation.</p> |
| Government Policy on Gender |
| <p>The National Gender Policy focuses on women empowerment while taking action in basic education and the abolishment of traditional practices which are harmful to women. The aim is to reduce gender bias that arises from traditional cultural customs.</p> <p>The Strategic Initiative on Gender holds goals to achieve empowerment for women's political capacity, and has established a gender-sensitive framework for both public and private sector. It also aims to have 30% of managerial positions occupied by women by 2015.</p> <p>Although CEDAW was ratified in 1985, implementation and operation on a practical level is insufficient.</p> |
| National Machinery |
| <p>The national machinery in Nigeria is the Department of Women Affairs of Federal Ministry of Women Affairs and Social Development (FMWA). The National Women Development Center (NWDC) was established to activate a Women Development Center (WDC) in each state. Though the gender focal points were set up in other related ministries and government offices, coordination among ministries and offices is not sufficient. There needs to a coordinated framework for the coherent measures.</p> |
| Situation of Women/Gender in Education |
| <p>In education sector, the National policy and framework is designed for focusing on basic</p> |

education, and female literacy rate is also increasing as the rate of primary school enrollment of younger generation rises. However, in the rural area, especially the North Muslim region, it is difficult for girls to attend the primary/secondary school because of traditional early marriage or other reasons.

In spite of the high unemployment rate of the youth, there are shortages of vocational and technical schools to provide training courses to them.

Situation of Women/Gender in Health

Abolishment of Female Genital Mutilation (FGM), improvement for violence against women, and abolition of Vesico-Vaginal Fistula (VVF)¹ are the major issues to be addressed in Nigeria in the health sector. Infantile mortality is at a high level and the medical services of women before and after birth are insufficient. The total fertility rate (Total Fertility Rate; TFR) is at a high level.

Assistance for stunted growth in children and the prevention of the spread of infectious disease infection is needed.

Situation of Women/Gender in Agriculture, Forestry and Fisheries

Almost half of the Nigerian labour force is engaged in the agriculture sector. It is the biggest sector for female workers and poor people. It is reported that female farmers have limited access to land ownership or credit, and sometimes men have the right to sell products even if women produce them.

While the government offers microcredit programmes and support for a cottage industry for small-scaled female farmers, the government has not met the budget allocation for the agricultural sector indicated in the Maputo Declaration; 10 percent of the national governmental budget.

Situation of Women/Gender in Economic Activities

In spite of high economic growth in recent years, diversification of occupation is limited for females. The underdeveloped manufacturing industry and high unemployment among younger generation are the tasks to be addressed.

Through the microcredit policy utilizing the National Poverty Reduction Programme (NAPEP), there are economical support and empowerment projects for small-scale female entrepreneurs or female workers.

¹ VVF an abnormal fistulous tract extending between the bladder and the vagina that allows the continuous involuntary discharge of urine into the vaginal vault. The cause is inadequate care on giving birth without medical access, or receiving violence. WHO says that in the Sub Sahara Africa, Middle East and Asia, 2 million or more suffer VVF all over the world (NPO Japan VVF website.).<http://blog.fistula-japan.org/>

List of Abbreviations

| Abbreviation | Official Name |
|--------------|--|
| ADB | African Development Bank |
| ARV | Anti-retroviral |
| CEDAW | Convention on the Elimination of all forms of Discrimination Against Women |
| DHS | Demographic and Health Survey |
| DFID | Department for International Development |
| ECOWAS | Economic Community of West African States |
| EFA | Education for All |
| FAO | Food and Agricultural Organization, UN |
| FFLH | Female Facilitation of Literacy for health |
| FGM | Female Genital Mutilation |
| GAD | Gender And Development |
| HIV/AIDS | Human-Immunodeficiency Virus / Acquired Immuno-Deficiency Syndrome |
| ILO | International Labour Organization |
| IOM | International Organization for Migration |
| LGA | Local Government Areas |
| MDGs | Millennium Development Goals |
| NCW | The National Committee on Women |
| NCWD | National Center for Women Development |
| NDE | National Directorate of Employment |
| NSPFS | National Special Programme for Food Security |
| NEEDS | National Economic Empowerment and Development Strategy |
| NGO | Non Governmental Organization |
| TFR | Total Fertility Rate |
| UNAIDS | Joint United Nations Programme on HIV/AIDS |
| UNDP | United Nations Development Programs |
| UNDOC | United National International Drug Control Programme |
| UNESCO | United Nations Educational, Scientific and Cultural Organization |
| UNFPA | United Nations Population Fund |
| UNIC | United Nations Information Centre |
| UNICEF | United Nations Children's Fund |
| UNIFEM | United Nations Development Fund for Women |
| WDC | Women Development Centre |

| Abbreviation | Official Name |
|--------------|---------------------------|
| WDR | World Development Report |
| WFP | World Food Organization |
| WHO | World Health Organization |
| VVF | Vesico-Vaginal Fistula |

Currency exchange rate
1 Nigerian naira (NGN) = 0.541 yen
(As of March, 2011)

This study was conducted between January and March 2011 by Mitsubishi Research & Consulting Co., Ltd., based on a review of secondary data and a field survey in Nigeria. This report was produced as a reference material for JICA to implement its projects in the country. The views and recommendations presented here do not necessarily reflect the official views and opinions of JICA.

1. Basic Profiles

1-1 Socio-Economic Profile

| Socio-Economic Profile | | | | | | | | Source |
|---|----------------------|--------------------------------|-------------------------|----------------------------------|---------------------------------------|---------------------------------------|--------------------------|--------|
| Social indicators | | | | | | | | |
| <u>International development indicators</u> | | Human development index | | Gender-related development index | | Gender Empowerment Measurement(Value) | | (1) |
| | 2005 | 0.402 | | NA | | NA | | |
| | 2010 | 0.423 | | 0.439 (2008) (6) | | 0.217108 (2008) (6) | | |
| <u>Demographic indicators</u> | | Total population (1000 people) | | % of urban population | | Population growth rate (%) | Total fertility rate (%) | |
| | | | Female ratio (%) | | Female ratio (%) | | | |
| | 1999 | 121,830 | 50.1 | 42(3) | N/A | 2.4 | 6(3) | (3) |
| | 2009 | 154,720 | 49.9 | 49(3) | N/A | 2.3 | 5.7(5) | (3) |
| | | | Life expectancy | | Household number by head of household | | | |
| | | Male | Female | Total | Male-headed | Female-headed | | |
| | 1990 | 43(3) | 46(3) | NA | 86% | 14%(3) | | |
| | 2009 | 47 (3) (2008) | 48(3) (2008) | 28,197,085 (2006) (8) | 83% (2003) | 17%(3) (2003) | | |
| | | | | | | | | |
| <u>Economic indicators</u> | | | | | | | | |
| | | GNP/capita | Growth rate of real GDP | GDP implicit deflator | Gini index | Aid/GNP | | |
| | | 2,289 U.S. dollars (GDP) (2) | 6%(3) | 345.38 (2009) (9) | 0.4882 (2004) (7) | 1%(2) | | |
| | | | | | | | | |
| <u>Public sector expenditure on sectors</u> | | Health | Education | Social welfare | Defense | Gender | Others | |
| | 2008 | N/A | N/A | N/A | N/A | N/A | N/A | |
| | | /GDP | /GDP | /GDP | /GDP | /GDP | /GDP | |
| | 2008 | 1.7 | 0.9 | N/A | N/A | N/A | N/A | (1) |
| <u>Industry/ GDP</u> | | Agriculture | Industry | Service | Others | | | |
| | | N/A | N/A | N/A | N/A | | | |
| | | | | | | | | |
| <u>Labor indicators</u> | | The total labor force | | Unemployment rate (%) | | Minimum wage | | |
| | | Male | Female | Male | Female | Male | Female | |
| | Number (1000 people) | 23,083 | 17,484 | 5.4 | 5.3 | N/A | N/A | (5) |
| | | | | | | | | |

| <u>Employment rate (year)</u> | | Agriculture | Nonagricultural sector | | | | | |
|--|--|-----------------|-------------------------------|----------------|---------------|-----------------|------|-----|
| | | | Manufac turing industry | Retail trade | Educat ion | Social services | | |
| | Labor force (1000 people) | 19,236 | 2,281 | 8,834 | 1,909 | 1,839 | | (5) |
| | Female ratio (%) | 36.5 | 6.2 | 30.1 | 4.8 | 3.8 | | |
| Approaches to gender issues | | | | | | | | |
| <u>Ratification and signature of international laws</u> | | | | | | | year | |
| | Convention for Elimination of All Forms of Discrimination Against Women (CEDAW) | | | | | | 1985 | |
| | Convention on the Child Rights of the | | | | | | 1991 | |
| | Convention against Torture and Other Cruel, Inhuman or Degrading Treatment or Punishment | | | | | | 2001 | |
| <u>Women in decision-making (% of female population)</u> | | | | | | | | |
| | Government | Parliament | 36 | Private sector | Officer | N/A | (5) | |
| | | Minister | 8 | | Expertise job | N/A | | |
| | | Deputy minister | 9 | | | | | |
| <u>Policy of gender</u> | | | | | | | year | |
| | National gender policy (National Gender Policy) | | | | | | 2007 | |
| <u>Laws of gender</u> | | | | | | | year | |
| | The constitution of Chapter 2 (Chapter 2 of the Constitution) | | | | | | 1999 | |
| | Constitution Chapter 4-42 article (Section 42 (1), Chapter 4 of the Constitution) | | | | | | 1999 | |
| | Convention on the Rights of the Child (The Child Rights' Act of 2003) | | | | | | 2003 | |
| <u>Public organization of gender</u> | | | | | | | | |
| | National-machinery name: Federal Ministry of Women Affairs and Social Development | | | | | | 1995 | |

Source: (1) Data extracted from a UNDP HDI related database. <http://hdrstats.undp.org/en/tables/default.html>

(2) UNDP Data from <http://hdrstats.undp.org/en/indicators/69206.html> Life expectancy

(3) World Bank databank (World Development Indicators & Global Development Finance)

(4) World Bank databank (Education Statistics)

(5) Federal Ministry of Women Affairs and Social Development (2008b), Nigeria Gender Statistics Book

(6) UNDP (2009) *Human Development Report Nigeria 2008-2009*

(7) National Bureau of Statistics (2005) *Poverty Profile for Nigeria*

(8) National Population Commission of Nigeria, *Census 2006*

(9) IMF (2010) *World Economic Outlook 2010*

1-2 Health Profile

| Health Profile | | | | | | | | Source | | | | | | |
|---|---------------------|--|-------|------------------------------------|--|-----------------------------------|--------|---|-----|------|-------|-----|-------|-----|
| Prevalence of health service | | No. Hospital beds per 1,000 person | | No. of physicians per 1,000 person | | | | | | | | | | |
| | | N/A | | N/A | | | | | | | | | | |
| Infant mortality rate | 1990 | Total | | 126/1,000 | | Female | N/A | (2) | | | | | | |
| | 2009 | | | 86/1,000 | | | N/A | (2) | | | | | | |
| Under five mortality rate | 1990 | Total | | 212/1,000 | | Female | N/A | (2) | | | | | | |
| | 2009 | | | 138/1,000 | | | N/A | (2) | | | | | | |
| Prevalence and death rates associated with tuberculosis | | | Total | | N/A | | Female | | N/A | | | | | |
| Prevalence and death rates associated with infection diseases | | | Total | | N/A | | Female | | N/A | | | | | |
| % of vaccinated (1 year old) | | BCG | | DPT | | Polio | | Measles | | 2009 | (2) | | | |
| | | 53 | | 42 | | 54 | | 41 | | | | | | |
| Reproductive health | | Contraceptive prevalence rate | | | Rate of births attained by trained personnel | | | Anemia prevalence among pregnant women | | | | | | |
| | | N/A | | | N/A | | | N/A | | | | | | |
| | | Maternal mortality ratio | | | Total Fertility rate | | | Average for first marriage | | | | | | |
| | 2008 | 1,100/100,000 | | | N/A | | | N/A | | | | | | |
| Nutrition | | Children under weight for age (& aged under 5) | | | Oral re-hydration therapy use rate | | | Iodine deficiency | | | | | | |
| | | 43 (2003-2009) | | | 25 (2005-2009) | | | N/A | | (2) | | | | |
| Community health service | | Access to safe water (%) | | | | Access to adequate sanitation (%) | | | | (3) | | | | |
| | | Total | | Urban | | Rural | | Total | | | Urban | | Rural | |
| | 2000 | 53 | | 77 | | 36 | | 34 | | | 37 | | 32 | |
| | 2008 | 58 | | 75 | | 42 | | 32 | | | 28 | | 36 | |
| HIV/AIDS | | HIV prevalence, aged (15 to 49 years old) (%) | | | | | | % of population aged with comprehensive knowledge of HIV/AIDS | | | | | | |
| | | Total | Male | Female | | | Male | Female | | | | | | |
| | | | | | Pregnant women | | | | | | | | | |
| | 2009(%) | 3.6 | | N/A | | N/A | | N/A | | 1.2 | | 2.9 | | (2) |
| | 2009 (1,000 people) | 3,300 | | N/A | | N/A | | N/A | | 33 | | 22 | | (2) |

Source: (1) Data extracted from a UNDP HDI related database. <http://hdrstats.undp.org/en/tables/default.html>

(2) UNICEF At a Glance Nigeria, http://www.unicef.org/infobycountry/nigeria_statistics.html

(3) World bank databank (World Development Indicators & Global Development Finance)

1-3 Education Profile

| Education Profile | | | | | | | | Source |
|--|---------|-----------|-----------|----------------|----------------------------|----------|--------|--------|
| Education system | Primary | 6 | Secondary | 3 | Tertiary | 3 | | |
| Adult literacy rate (aged 15 and over) | Total | 74.8 | Male | 78.0 | Female | 65.0 | (2) | |
| Primary education | | | | | | | | |
| Net enrolment rate | 1996 | Total | 75.9 | Male | 82.4 | Female | 69.3 | (3) |
| | 2007 | | 93.1 | | 99.2 | | 86.8 | (3) |
| Progression rate | | Total | N/A | Male | N/A | Female | N/A | |
| | | | N/A | | N/A | | N/A | |
| Drop-out rate | 2003 | Total | 25 | Male | 25 | Female | 25 | (4) |
| Secondary education | | | | | | | | |
| Net enrolment rate | 1999 | Total | 23.9 | Male | 25.4 | Female | 22.4 | (3) |
| | 2007 | | 30.5 | | 34.3 | | 26.5 | (3) |
| Progression rate | | Total | N/A | Male | N/A | Female | N/A | |
| Drop-out rate | | Total | N/A | Male | N/A | Female | N/A | |
| Tertiary education | | | | | | | | |
| Net enrolment rate | 1999 | Total | 6.0 | Male | 6.7 | Female | 5.2 | (3) |
| | 2005 | | 10.1 | | 11.9 | | 8.3 | (3) |
| Progression rate | | Total | N/A | Male | N/A | Female | N/A | |
| Drop-out rate | | Total | N/A | Male | N/A | Female | N/A | |
| Tertiary level enrolment by field of study by gender | | Education | Art | Social science | Engineering and Technology | Medicine | Others | |
| | | N/A | N/A | N/A | N/A | N/A | N/A | |

Source : (1) <http://hdrstats.undp.org/en/countries/profiles/NGA.html>

(2) UNICEF At a Glance Nigeria, http://www.unicef.org/infobycountry/nigeria_statistics.html

(3) World bank databank (World Development Indicators & Global Development Finance)

(4) World bank databank (Education Statistics)

2. General Situation of Women and Government Policy on Gender

2-1 General Situation of Women in Nigeria

General Situation of the Women in Nigeria

In spite of high economic growth, about 70 percent of the population lives on less than 1 US dollar per day. Female poverty rate is particularly high in Nigeria because of race, religion and socio-political backgrounds. There are many challenges to be addressed which arise from traditional customs, and require donors and international institutions support.

In development strategies, it is clearly indicated that gender equality is one of prioritized areas in Nigeria, and the gender budget is currently under consideration.

The percentage of women who have ever suffered from violence inflicted on them is 30 percent on average. The percentage is particularly high among the group who are widowed or divorced, and/or living in urban areas. It is acknowledged and broadly accepted in Nigerian society that it is a punishable act for husband to beat wife.

Participation of women to the political field remains low. However, the *Human Development Report 2009* indicated that the percentage of female at the ministerial level is higher than Japan (23% in Nigeria and 12% in Japan). In this regard, Nigerian women participation in the political area might be advanced to Japanese situation.

[General situation]

In Nigeria, about 70 percent of the population lives on less than 1 US dollar per day and the female poverty rate is high (*World Development Indicators* 2007). The 1999 Constitution of Nigeria clearly stipulates gender equality, but customary and religious laws continue to restrict women's rights². The women's rights of Nigeria are very limited in terms of access for resources (land ownership and credit) and opportunities (education, training, occupation), especially for the North Islamic women. Since there are more than 250 ethnic groups and their various customs, and Islamic customs (half the population are Muslim), women's full participation in society and poverty reduction has not progress so much.

The major race groups are: Hausa (who are Islam in the Northern region), Yorba (in the South West region), and Ibo (in the South East region). The poverty situation differs by race, customs and religion.

On the other hand, the economic development from 2003 to 2009 has accomplished GDP

² OECD Development Center website, The Social Institutions and Gender Index (SIGI)
<http://genderindex.org/country/nigeria>

growth of 7,4 percent on average. However, these benefits do not contribute to the obstacles against gender equality nor social development.

The federal government established National Economic Empowerment and Development Strategy (NEEDS) in 2004 which is the poverty reduction strategy document. It contains 4 targeted areas: (1) creation of wealth, (2) job creation, (3) poverty reduction, and (4) value-added direction.

After that, Seven Point Agenda was established in 2007 and Nigeria Vision 20: 2020³ in 2010 was implemented. All of these initiatives include efforts address the gender gap, gender equality and women's empowerment. The gender budget is under consideration⁴.

[Violence against women]

According to *Demographic and Health Survey 2008*, the percentage of women who have experienced violence was around 30% in 2008 shown in Table 1⁵. The percentage is higher in urban area (30.2%) than in rural area (26.3%) and higher in the South South region (52.1%) than in the North West region (13.1%).

It is acknowledged that it is natural for a husband to beat/commit violence against his wife in Nigeria. A husband beats his wife over domestic disputes such as burning food, arguing with him, going out without permission or neglecting the children⁶.

³ Nigeria Vision 20:2020 Economic Transformation Blueprint, October 2009

⁴ Federal Ministry of Women Affairs and Social Development (2009a) *Engendering National and State Budgets: Impact on Sectoral Plans and Policies*

⁵ National Population Commission (2008) *Demographic and Household Survey 2008*, p.262

⁶ From the interview (Ministry of Health) and National Population Commission (2008) *Demographic and Health Survey 2008*, p.247 and Table 15.6.2, p.249
http://www.unicef.org/nigeria/ng_publications/Nigeria_DHS_2008_Final_Report.pdf

Table 1: The women who have ever experienced violence and its attribute (unit: %)

| | The rate which has the experience which received physical violence after 15 years old | The rate which received physical violence in the past 12 months | |
|---------------------------------|---|--|-----------|
| | | Frequent | Sometimes |
| Age (age) | | | |
| 15-19 | 26.7 | 1.8 | 14.4 |
| 20-24 | 28.2 | 1.7 | 12.7 |
| 25-29 | 30.0 | 1.9 | 14.1 |
| 30-39 | 27.4 | 1.9 | 13 |
| 40-49 | 25.9 | 1.8 | 11.5 |
| Employment status | | | |
| Inoccupation | 23.2 | 1.3 | 11.6 |
| Wage earner | 28.1 | 1.9 | 12.6 |
| Unpaid worker | 38.4 | 3.2 | 19.8 |
| Others | 26.4 | 3.8 | 13.1 |
| Marital status | | | |
| Unmarried | 33.2 | 1.5 | 14 |
| Married and living together | 25.1 | 1.7 | 13 |
| Divorce and separation | 44.0 | 5.7 | 11.7 |
| Widow | | | |
| The number of children (person) | | | |
| 0 | 30.0 | 1.5 | 13 |
| 1-2 | 27.3 | 2.0 | 12.7 |
| 3-4 | 26.1 | 2.1 | 13.2 |
| Five or more | 26.8 | 1.9 | 13.7 |

| | The rate which has the experience which received physical violence after 15 years old | The rate which received physical violence in the past 12 months | |
|-----------------|---|--|-----------|
| | | Frequent | Sometimes |
| Area | | | |
| Urban | 30.2 | 2.0 | 12.7 |
| Rural | 26.3 | 1.7 | 13.4 |
| Rural areas | | | |
| North-middle | 31.0 | 2.5 | 17.5 |
| Northeast | 19.7 | 2.1 | 12.5 |
| Northwestern | 13.1 | 0.5 | 5.9 |
| Southeast | 29.6 | 2.2 | 13.4 |
| South southern | 52.1 | 3.0 | 20.9 |
| Southwest | 28.9 | 1.8 | 13.4 |
| Education level | | | |
| Uneducated | 14.9 | 1.3 | 8.6 |
| Elementary | 35.6 | 2.8 | 17.4 |
| Secondary | 36.5 | 2.2 | 16.6 |
| High level | 30.1 | 0.7 | 9.5 |
| Income level | | | |
| Low income | 18.8 | 1.4 | 11.3 |
| Low -Middle | 21.3 | 1.8 | 10.9 |
| Middle | 29.3 | 2.0 | 14 |
| Middle-High | 34.1 | 2.2 | 15.7 |
| High | 33.7 | 1.8 | 13.6 |
| Total | 27.7 | 1.8 | 13.1 |

Source: National Population Commission (2009) *Nigeria Demographic and Health Survey*, Table 16.1, p.263

Human trafficking is a serious social problem in Nigeria. The government statistics in 2004 and 2005 reported that about 80 percent of victims were girls and more than 300 children had been forced into the sex industry and domestic labour in 2005⁷.

[Low presentation in key decision making positions in the government]

The percentage of female in political positions is significantly lower than males. Table 2 below

⁷ Federal Ministry of Women Affairs and Social Development (2008b), pp.67-68

indicates the spread. However *Human Development Report 2009* indicates the percentage of females at the ministerial level is higher than Japan (23% in Nigeria and 12% in Japan). In this regard, Nigerian women participation in political area might be more advanced than the Japanese situation.

Table 2: The number of seats held in National Assembly by women (unit: person, %)

| | Female (comparatively) | Male | Sum total |
|---------------------------------|------------------------|------|-----------|
| Senator | 9(12.1%) | 100 | 109 |
| Representative | 27(13.2%) | 330 | 357 |
| Minister | 8(5.5%) | 37 | 45 |
| Administrative Vice-Minister | 9(4.4%) | 31 | 40 |

Source: Federal Ministry of Women Affairs and Social Development (2008b), Table 7.3, p.59

[Issues originated in religions and traditional customs]

Traditionally, Female Genital Mutilation (FGM) is carried out although the percentage has gradually declined to a national average of 32,6 percent in 2008 from around 40 percent in 1998 (also refer to the Health section in 3-2)⁸. FGM presents not only a physical but a mental danger to females. The risk of bacterial infection is high since FGM is usually conducted at the time suckling. Educational/advocacy activities for the abolition of FGM need to be conducted for parents/ adults with the long term view of abolishing FGM despite the willingness of girls.

Table 3 indicates the enforcement rate of FGM. It shows that FGM is not so popular in the North East and the North West regions but it appears to be common custom in the South West and the South East region. At a state level, Edo state of the South region established a law to prohibit FGM in 2000 and it burdens the FGM conductors with the fine of 1,000 Nairas (about 6.5 U.S. dollars) and imprisonment for six months⁹. Ondo state, which is in the South region, also has a law that prohibits FGM.

⁸ From the interview (Ministry of Health).

⁹ Federal Ministry of Women Affairs and Social Development (2008b) Nigeria Gender Statistics Book, p.68

Table 3: The FGM enforcement rate in Nigeria (unit: %)

| Area | % |
|---------------|------|
| Total | 32.6 |
| Rural | 29.0 |
| Urban | 40.0 |
| North East | 1.7 |
| North West | 2.0 |
| North Central | 14.5 |
| South East | 58.3 |
| South West | 65.0 |
| South South | 46.7 |

Source: Federal Ministry of Women Affairs and Social Development (2008b), Table 8.6, p.69

There is a social custom where widowers according to Sharia law (Islamic law) can fall into economical poverty when the husband passes away because they traditionally have no right to their property¹⁰. In the Northern states where many Muslims live, many laws are mixed up such as Sharia law (Islamic law), the federation law, the state law, and traditional customs. As a measurement of protection for widower's human rights, the Prohibition of Infringement of a Widower's and Widow's Fundamental Human Rights Law, No.3 was enforced in 2001 in Enugu state¹¹.

In Nigeria, women tend to get married at the early age, as Table 4 shows. Almost half of women get married before 19 years old. This early marriage might affect the low school enrollment and school attendance rate, as well as the increasing rate of population. Several measurements are taken by states such as Kebbi and Niger state to ban early marriages, and the state of Edo ensures school attendance of the girls¹².

Table 4: Age at the first marriage in Nigeria (2006) (unit: %)

| Age | Female | Male | Total |
|----------|--------|------|-------|
| 10 to 14 | 11.5 | 0.7 | 6.8 |
| 15 to 19 | 49.6 | 8.3 | 31.6 |
| 20 to 24 | 26.6 | 29.0 | 27.6 |
| 25 to 29 | 9.7 | 33.2 | 19.9 |
| 30 to 34 | 2.2 | 19.5 | 9.7 |
| 35 to 39 | 0.3 | 6.8 | 3.2 |
| 40 to 44 | 0.1 | 1.7 | 0.8 |
| 45 to 49 | 0.0 | 0.5 | 0.2 |
| over 50 | 0.0 | 0.3 | 0.1 |

Source: Federal Ministry of Women Affairs and Social Development (2008b), Table 2.3, p.7

¹⁰ UNHCR website. <http://www.unhcr.org/refworld/docid/3ae6ad6f0.html>

¹¹ Federal Ministry of Women Affairs and Social Development (2008b) *Nigeria Gender Statistics Book*, p.68

¹² *Ibid* .,p.7

2-2 Government Policy on Gender

| Government Policy on Gender |
|--|
| <p>The National Gender Policy focuses on women empowerment while taking action in basic education and the abolishment of traditional practices which are harmful to women. The aim is to reduce gender bias that arises from traditional cultural customs.</p> <p>The Strategic Initiative on Gender holds goals to achieve empowerment for women's political capacity, and has established a gender-sensitive framework for both public and private sector. It aims to have 30% of managerial positions occupied by women by 2015.</p> <p>Although CEDAW was ratified in 1985, implementation and operation on a practical level is insufficient.</p> |

[Government Policy on Women]

The Government of Nigeria adopted and enforced the National Gender Policy in 2007 as a substitution of the Women's Policy adopted in 2000. Its objective is to promote peoples potential so society may boom despite gender and social class.

The National Gender Policy is based on the following¹³;

- Equality in the status of men and women is fundamental to sustainable development in every society. The goal of Gender and Development framework is equitable and sustainable development playing active role as decision-makes.
- Solution to underdevelopment is the empowerment of the disadvantaged, especially women.
- The gender policy framework peruses the empowerment of women through a just and equitable society.

Based on the above, the goal of the National Gender Policy includes the following¹⁴;

- Eliminate cultural/ religions gender-based biases and harmful cultural and religions practices which rise to inequalities in gender-role relations in the Nigerian society. A culture which is amendable to development must be dynamic.
- In order to tap the potential of women for development, a gender policy which entrenches equity between men and women for development is key. All forms of gender-based violence must be eliminated.
- Women education is a priority because it is the key to gender equity, justice and poverty reduction, improved skills and technological knowledge, as well as the general socio-economic development of

¹³ Federal Ministry of Women Affairs and Social Development (2009) *Report on the Advocacy/ Sensitization Visits*, Volume I, pp.6-5

¹⁴ *Ibid.*,p.7

the nation. A major policy goal is to ensure equal access to women, boys and girls to both formal and informal education.

- Women empowerment is a key entry point to gender equality in the society. A major policy goal is to ensure that women have access to critical resources and invest in their human capital as a means of reducing extreme poverty in families.
- Although government is undertaking a number of health reforms including laws against harmful traditional practices (FGM, widowhood rites and child marriage), many cultural practices still put the health of women at very high risk. Efforts in these areas still need to be intensified. There is therefore, the need for improved health services and better reproductive health care for all.

Federal Ministry of Women Affairs and Social Development (FMWA) promote actions to achieve the goals listed above, and a gender budget among policymakers¹⁵.

The Strategic Initiative on Gender identified three goals: (1) functioning the system to empower the women's political capacity, (2) establishing gender-sensitive framework for both public and private sector, (3) promoting the percentage of women at management level to 30 percent by 2015.

In order to achieve these goals, there are concrete actions as follows¹⁶;

- Promotion of a legal framework without discrimination
- Implementation of international / local agreement on women and a child
- Making a guideline for corresponding to the violence based on gender
- Abolition of the traditional customs which harm women
- Advocacy about traditional, religious / cultural barrier in rural society
- Strengthening of the gender machinery at the federal and the state level
- Promotion of the gender equality in basic education
- Expansion of access of women to employment, land, and credit
- Promoting women enterpriser's training and participation/establishment to the trade union
- Support for set-up business and vocational skills
- Ensure the budget for policy and projects on gender equality
- Building a gender database

[Development Plan for Women]

It is said that 70% of the poor in Nigeria are women. There is a need to strengthen women's participation in politics, economy, society and cultural activities. Although Nigeria has already ratified the Convention on the Elimination of All Forms of Discrimination against Women (CEDAW), the implementation or operation at the practical level to abolish the all discrimination

¹⁵ Federal Ministry of Women Affairs and Social Development (2009) *Engendering national and State Budgets: Impact on Sectoral. Plans and Policies*, p.63

¹⁶ JICA (2010), p.11

against women is not sufficient. Moreover, the government needs to increase efforts to design gender sensitive development policies to help abolish harm traditional practices, to promote for microfinance for women, and to improve the participation of women to the political issues and to set up safety net system for women. However, there are many challenges in gender mainstreaming in the broader field¹⁷.

[Gender-related laws and regulations]

The major laws and regulations on gender are shown in Table 5. As mentioned before, there are federal, state, custom and religious laws in Nigeria.

Table 5: The gender-related laws and regulations in Nigeria

| Laws and regulations | Year | Content |
|--|------|--|
| Domestic | | |
| Chapter 2 of the Constitution | 1999 | To ensure the gender equality directly and indirectly. |
| Section 42 (1), Chapter 4 of the Constitution | 1999 | To prohibit discrimination based on gender and class. |
| The Child Rights' Act of 2003 | 2003 | To protect children's rights. 22 out of 36 states ratify it. |
| International law and a treaty (ratification year) | | |
| The Convention on the Elimination of All Forms of Discrimination Against Women (CEDAW) | 1985 | To achieve the elimination of all forms of discrimination against women, and the gender equality |
| Children's Rights Convention | 1991 | To protect children's rights that is defined in International Covenants on Human Rights. |
| Convention Against Torture and Other Cruel, Inhuman or Degrading Treatment of Punishment | 2001 | To protect women from all forms of tortures and inhuman treatments |

Source: Federal Ministry of Women Affairs and Social Development (2009) *Engendering national and State Budgets: Impact on. Sectoral Plans and Policies*, p.61, and the Ministry of Foreign Affairs website.

The measures for the abolition of discriminatory practices against women at a local level are listed below in Table 6.

¹⁷ Usman (2005) "Integration of gender perspectives in macroeconomics". *Report submitted to the Commission on the Status of Women*, Forty-ninth session, New York, and 28 February - 11 March 2005

Table 6: The gender related laws at the state level

| |
|---|
| The law on prohibition of female human trafficking |
| <ul style="list-style-type: none"> • The Sharia (Sharia law) Article 239, 2000 in Zamfara state¹⁸ • The Edo State Criminal Code (Amendment) Law 2000 |
| The law on abolition and prohibition of FGM |
| <ul style="list-style-type: none"> • Edo state (2000), Ondo state¹⁹ |
| The law on protection of human rights of widow |
| <ul style="list-style-type: none"> • The Prohibition of Infringement of a Widow's and Widower's Fundamental Human Rights Law, No.3, 2001²⁰ |
| The law on prohibition of early marriage, and ensuring primary school enrolment for girls |
| <ul style="list-style-type: none"> • Ban on early marriage in Kebbi and Niger state • The state law which secures primary school enrollment for girls in Edo, Kano, Borno, Gombe, and Bouchi state²¹ |

Source: Federal Ministry of Women Affairs and Youth Development (2002) (2008b)

¹⁸ Federal Ministry of Women Affairs and Youth Development (2002) *Nigeria 4th and 5th Periodic Country Report on the Implementation on the Elimination of All Forms of Discrimination Against Women (CEDAW)*, p.14

¹⁹ Federal Ministry of Women Affairs and Youth Development (2002), p.15

²⁰ Federal Ministry of Women Affairs and Social Development (2008b) *Nigeria Gender Statistics Book*, p.68

²¹ Federal Ministry of Women Affairs and Social Development (2008b), p. 7 and Federal Ministry of Women Affairs and Youth Development (2002), p.15

2-3 National Machinery

| National Machinery | |
|--|--|
| <p>The national machinery in Nigeria is the Department of Women Affairs of Federal Ministry of Women Affairs and Social Development (FMWA). The National Women Development Center (NWDC) was established to activate a Women Development Center (WDC) in each state. Though the gender focal points were set up in other related ministries and government offices, coordination among ministries and offices is not sufficient. There needs to a coordinated framework for the coherent measures.</p> | |

[Background]

Since 1987, Women Development Centers were built all over the country under the initiative of the First Lady of those days, and empowerment support for women at grass-roots level was carried out in the field of agriculture, food processing, health, education, crafts and recreation. However these activities stagnated in the late 1990s due to the financial deficit.

Priority agendas are gender gap adjustment, gender equality, and women's empowerment indicated in NEEDS (2000), 7 Point Agenda (2007) and Nigeria Vision 20: 2020 (2010), so the government of Nigeria has made efforts towards gender issues with support from external donors and international organizations²².

[National machinery]

The national machinery in Nigeria is the Department of Women Affairs of Federal Ministry of Women Affairs and Social Development (FMWA) which was established in 1995. It corresponds with the Beijing Action Platform established in 1995. Each state has the State Ministry of the Women Affairs and Social Development in 36 states.

| | |
|-------------------|--|
| Organization name | Department of Women Affairs, Federal Ministry of Women Affairs and Social Development |
| Established | 1995 |
| No. of the staff | 580 persons (about 60 staffs in Department of Women Affairs, where in charge of gender issues) ²³ |
| Budget | About 3,7 billion Nairas (about 2 billion yen) ²⁴ in FY2009 |
| Objectives | Vision: To have a Nigerian society that guarantees equal access to social, |

²² Nigeria Vision 20:2020 Economic Transformation Blueprint, October 2009

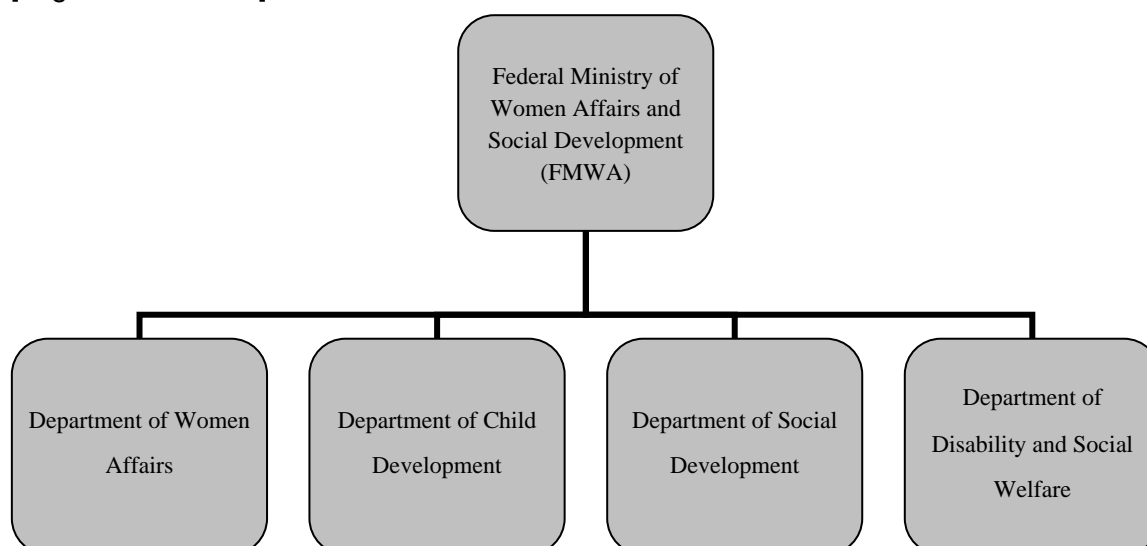
²³ JICA (2010), p.29

²⁴ *Ibid.*

| | |
|------|--|
| | economic and wealth creation opportunities to all, irrespective of gender; and one that places premium on protection of the child, the aged and persons with disabilities, while focusing attention on key operators in both private and public sectors on mainstreaming the concerns of these groups of people in national development process. |
| Role | Mission statement: Is to serve as the national vehicle to bring about speedy and healthy development of Nigerian women, children, the socially disadvantaged and person with disabilities; and the mainstreaming of their rights and privileges in national development process. |

Source: Federal Ministry of Women Affairs and Social Development (2009) *Report on the Advocacy/ Sensitization Visits*, Volume I, p.1

[Organization chart]



Source: From the interview

[Main activities of Federal Ministry of Women Affairs and Social Development]

The main goals of FMWA are women empowerment programmes (including family support programmes), female support in the agricultural sector and microcredit programme support²⁵.

Moreover, both the National Advisory Committee on Women and the National Committee on Women (NCW) were established for the improvement in the status of the women in accordance with the “Nairobi Forward Looking Strategies for the Advancement of Women”.

²⁵ Federal Ministry of Women Affairs and Social Development (2009) *Engendering national and State Budgets: Impact on Sectoral Plans and Policies*, p.62

As a subsidiary institute of FMWD, National Center for Women Development (NCWD) was established in 1995 (under the jurisdiction of Federal Ministry in 1999). It conducts surveys on gender issue and provides vocational trainings. Each state had a Women Development Center (WDC) in the late 1980s which provided several vocational training courses and contributed to improving the quality of women's lives at grass-root level²⁶.

JICA has been supporting NCWD and WDC since 2007; dispatching experts and providing project assistances²⁷.

From the international point of view, FMWA submits country reports regularly to the secretary of CEDAW, provides the support for adoption of the gender policy of Economic Community of West African States (ECOWAS), and established the National Secretariat in the Executive Office of the President to monitor the progress of MDG goals, especially for MDG1 (poverty alleviation), MDG3 (gender equality and improvement of women's status), and MDG8 (promotion for global development partnership)²⁸.

[The Activities of Other ministries and government offices at local levels.]

Though the gender focal points were set up in other related ministries and government offices²⁹, coordination among ministries and offices are not sufficient and there needs to be a coordinated framework for the coherent measures³⁰.

As Nigeria is a federal republic, each state has the authority to draft its own legislation. As a result, each state has different laws on gender issues (see the gender related laws at the state level in the section of 2-2).

Each state's diversities are shown in Table 7 below. It allows us to understand why measures and laws are needed by state³¹. For example, both NCWD for national institute and WDC for state institute are the focal points on gender issues, and same applies to the National Action Committee on AIDS (NACA) and State Action Committee on Control of AIDS (SACA) for HIV/AIDS. Both NACA and SACA developed the HIV/AIDS assistance framework which pays attention to gender

²⁶ JICA website. <http://www.jica.go.jp/project/nigeria/0604889/01/index.html>

²⁷ For example, there is Activation of Women Development Centers to improve Women's Livelihood Project.

²⁸ Federal Ministry of Women Affairs and Social Development (2009) *Report on the Advocacy/ Sensitization Visits* Volume I, p.5

²⁹ Federal Ministry of Women Affairs and Social Development (2009) *Engendering national and State Budgets: Impact on Sectoral Plans and Policies*, p.63

³⁰ From the interview (Ministry of Health).

³¹ Nigeria has 774 Local Government Areas (LGAs) under 36 states.

issues and provides the training for the staff³².

Table 7: The gender related index by state of Nigeria

| State | Life expectancy (year) | | Adult literacy (%) | | Primary and secondary education enrolment rate (%) | | Income per person. (U.S. dollar) | |
|-------------|------------------------|------|--------------------|------|--|-------|----------------------------------|-------|
| | Female | Male | Female | Male | Female | Male | Female | Male |
| Average | 52 | 48 | 55.1 | 73.2 | 76.0 | 94.4 | 715 | 1,596 |
| Abia | 55 | 50 | 73.3 | 85.7 | 96.1 | 124.7 | 408 | 408 |
| Adamawa | 48 | 45 | 43.8 | 65.1 | 71.0 | 105.8 | 78 | 339 |
| Akwa Ibom | 50 | 47 | 75.0 | 85.0 | 92.8 | 111.1 | 3,879 | 3,743 |
| Anambra | 49 | 44 | 73.6 | 81.0 | 101.0 | 120.5 | 154 | 172 |
| Bauchi | 52 | 47 | 28.0 | 49.2 | 37.5 | 59.4 | 54 | 277 |
| Bayelsa | 53 | 46 | 46.0 | 82.6 | 85.8 | 114.6 | 4,750 | 5,972 |
| Benue | 49 | 46 | 47.3 | 81.4 | 89.9 | 129.1 | 715 | 2,158 |
| Borno | 54 | 51 | 18.0 | 35.1 | 34.0 | 51.7 | 129 | 910 |
| Cross River | 56 | 52 | 66.4 | 83.3 | 107.6 | 114.4 | 447 | 761 |
| Delta | 51 | 49 | 54.6 | 92.2 | 100.9 | 117.7 | 2,101 | 2,556 |
| Ebonyi | 51 | 45 | 46.1 | 67.9 | 90.7 | 137.8 | 182 | 216 |
| Edo | 50 | 44 | 67.2 | 84.9 | 103.5 | 119.2 | 261 | 394 |
| Ekiti | 56 | 54 | 67.3 | 82.5 | 111.8 | 125.7 | 232 | 402 |
| Enugu | 53 | 52 | 68.4 | 81.5 | 97.2 | 125.4 | 244 | 380 |
| Gombe | 51 | 47 | 69.1 | 82.1 | 31.1 | 51.4 | 38 | 661 |
| Imo | 51 | 50 | 19.6 | 57.8 | 96.8 | 127.2 | 340 | 494 |
| Jigawa | 50 | 45 | 50.5 | 73.9 | 23.6 | 41.6 | 150 | 1,816 |
| Kaduna | 51 | 43 | 48.0 | 67.0 | 73.5 | 106.3 | 266 | 1,114 |
| Kano | 53 | 49 | 26.7 | 46.5 | 46.5 | 75.4 | 157 | 1,188 |
| Katsina | 54 | 51 | 39.5 | 57.6 | 34.5 | 64.7 | 442 | 1,553 |
| Kebbi | 53 | 49 | 54.3 | 72.9 | 26.9 | 51.1 | 515 | 502 |
| Kogi | 50 | 46 | 43.7 | 67.3 | 109.1 | 127.9 | 88 | 209 |
| Kwara | 53 | 49 | 84.4 | 94.1 | 74.8 | 117.5 | 265 | 375 |
| Lagos | 50 | 45 | 34.1 | 66.6 | 100.0 | 110.9 | 1,781 | 3,249 |
| Nassarawa | 55 | 47 | 28.7 | 54.2 | 87.0 | 113.8 | 640 | 1,813 |
| Niger | 58 | 50 | 60.2 | 77.3 | 47.0 | 84.8 | 675 | 2,628 |
| Ogun | 54 | 52 | 68.0 | 84.0 | 79.2 | 123.2 | 194 | 302 |
| Ondo | 51 | 50 | 64.7 | 83.9 | 104.2 | 124.5 | 1,640 | 1,736 |
| Osun | 55 | 53 | 65.7 | 79.7 | 94.6 | 123.7 | 167 | 200 |
| Oyo | 53 | 51 | 52.2 | 67.9 | 97.2 | 109.9 | 176 | 386 |
| Plateau | 47 | 43 | 72.2 | 88.3 | 81.7 | 134.3 | 122 | 267 |
| Rivers | 46 | 44 | 59.9 | 73.9 | 110.8 | 122.1 | 3,003 | 7,242 |
| Sokoto | 53 | 48 | 39.7 | 62.6 | 28.8 | 51.5 | 299 | 2,685 |
| Taraba | 51 | 46 | 14.9 | 32.9 | 67.7 | 108.8 | 28 | 253 |
| Yobe | 52 | 47 | 38.9 | 59.6 | 33.5 | 53.7 | 72 | 442 |
| Zamfara | N/A | N/A | N/A | N/A | N/A | N/A | N/A | N/A |
| FCT, Abja | N/A | N/A | N/A | N/A | N/A | N/A | N/A | N/A |

Notes: Primary and secondary enrolment rate are considered to be just added of both of the rate, so that the total number might be exceeding 100%.

Source: Reproduce from UNDP (2009) *Human Development Report Nigeria 2008-2009*, Table 3.1, and p.152.

³² JICA(2010), p.13

3. Current Situation of Women by Sector

3-1 Education

| Education |
|--|
| <p>In education sector, the National policy and framework is designed for focusing on basic education, and female literacy rate is also increasing as the rate of primary school enrollment of younger generation rises. However, in the rural area, especially the North Muslim region, it is difficult for girls to attend the primary/secondary school because of traditional early marriage or other reasons.</p> <p>In spite of the high unemployment rate of the youth, there are shortages of vocational and technical schools to provide training courses to them.</p> |

[Government Policy]

In Nigeria, 6-3-3-4 educational system is adopted (primary education is for 6 years, lower-secondary and the upper-secondary is for 3 years respectively, and the higher education is for 4 years). Compulsory education is for 9 years from primary to the lower-secondary school.

The national education policies which are concerned with gender issues are as follows; the National Policy on Gender in Basic Education, the Universal Basic Education Policy on Education, an Integrated Early Child Care and Education Policy, and the National Policy on Women.

The vision, target, goal and purpose are as follows³³.

- Visions: Promote the gender-sensitive approaches while promoting the understanding for the National Policy on Education (NPE), Education for All (EFA) and achieving MDGs
- Missions: Achieving the gender equality at the all level of basic education
- Goal: Securing equal access to basic education and all the children including the handicapped children enable to achieve graduation and results
- Purpose: (1) improvement of gender access to the basic education, (2) securing the girls school attendance rate (including graduation and results), (3) formulating the collaborations with stakeholders, and (4) research, planning, implementation, monitoring, and evaluation on female education

The Ministry of Education has placed an emphasis on girls' education, especially adopting measurements to prevent the drop-out of girls as a part of poverty alleviation.

³³ Federal Ministry of Education (2007) National Policy on Gender in Basic Education, pp.1-7

The reasons why the drop-out rate has not decreased stems from: (1) domestic factors (illiterate parents, forced to be labor force, no books at home, early marriage and so on) , (2) quality factors (quality of school and teacher is not enough, shortage of classrooms, teaching materials, and educational equipments, the low level of English), and (3) cultural factors (there are still strong recognition that Muslim girls' education is enough reading the Koran, and there is a traditional early marriage custom and pregnancy)³⁴.

About 5 million children have not enrolled in primary school, which is equivalent to 19 percent of children aged 6 to 11 in the whole country in 2006 according to *the 2006 National School Census (NSC)*. This trend is seen in the North region where the number of girls attending school is only half or one third of the boys attending³⁵.

In order to improve women's access to basic education, the Ministry of Education collaborated with DFID and UNICEF. They conducted surveys with stakeholders in the educational field and held workshop at the community levels. As a part of this programme, pilot projects have been carried out in 6 states since 2005. The results were summarised in the report titled: *Training Workshop for Institution of the Students' Tutoring (STUMEC) Programme in States with High Gender Disparity, 2008*. Phase 2 started in July 2008 in 4 states in the North region (out of 6 states) where the pilot projects were conducted. Phase 3 will start up in September 2011 in another states and will continue for about three years³⁶.

[Primary education]

There is no significant difference of attendance and drop-out rate between boys and girls. However, the percentage of girls attending primary school is slightly low compared to boys. Although the drop-out rate increases as age becomes higher, the total percentage of drop-out is only 0.5% or less³⁷.

The reasons why girls drop out school is due to shortages in the labour force, the distance to a school, the low quality of school curriculum, and dangers on the way to school³⁸.

Table 8 shows the number and percentage of the primary school enrollment rate by gender and state. It shows that the enrolment rate of girls in the states of Sokoto and Zamfara is very low (at the

³⁴ From the interview (Ministry of Education).

³⁵ Unicef Nigeria Office (2007) Information Sheet; Girl's Education
http://www.unicef.org/nigeria/Girl_Education_Infosheet_05-07-06.pdf

³⁶ From the interview (Ministry of Education).

³⁷ National Bureau of statistics (2007) *Gender and Poverty Monitoring*, Table 3.3, p.15

³⁸ Federal Ministry of Women Affairs and Social Development (2008b), p.15

level of 20%). As it turns out, the states of Jigawa, Katsina, Kebbi, Niger and Yobe also at the level of 30 percent. These states are all in the North or North Western region.

Table 8: The number/percentage of the primary school enrolment
classified by gender and state (2006)

| State | The number of girls enrollees (1,000 people) | Girls (%) | The number of boy enrollees (1,000 people) | Boys (%) | Total (1,000 people) |
|-------------|--|-----------|--|----------|----------------------|
| Abia | 120 | 50.2 | 119 | 49.8 | 239 |
| Adamawa | 204 | 45.0 | 249 | 55.0 | 453 |
| Akwa Ibom | 781 | 51.7 | 731 | 48.3 | 1,512 |
| Anambra | 267 | 49.6 | 271 | 50.4 | 538 |
| Bauchi | 393 | 40.1 | 586 | 59.9 | 979 |
| Bayelsa | 238 | 49.8 | 240 | 50.2 | 478 |
| Benue | 405 | 46.9 | 458 | 53.1 | 863 |
| Borno | 277 | 41.9 | 384 | 58.1 | 661 |
| Cross River | 217 | 49.5 | 221 | 50.5 | 438 |
| Delta | 235 | 50.3 | 232 | 49.7 | 467 |
| Ebonyi | 198 | 50.8 | 192 | 49.2 | 390 |
| Edo | 188 | 49.9 | 189 | 50.1 | 377 |
| Ekiti | 297 | 52.7 | 267 | 47.3 | 564 |
| Enugu | 145 | 49.3 | 149 | 50.7 | 294 |
| Gombe | 185 | 40.9 | 267 | 59.1 | 452 |
| Imo | 331 | 46.8 | 376 | 53.2 | 707 |
| Jigawa | 220 | 37.0 | 375 | 63.0 | 595 |
| Kaduna | 434 | 44.4 | 543 | 55.6 | 977 |
| Kano | 774 | 44.5 | 965 | 55.5 | 1,739 |
| Katsina | 415 | 35.7 | 746 | 64.3 | 1,161 |
| Kebbi | 127 | 34.2 | 244 | 65.8 | 371 |
| Kogi | 431 | 49.9 | 433 | 50.1 | 864 |
| Kwara | 269 | 46.5 | 310 | 53.5 | 579 |
| Lagos | 206 | 51.2 | 196 | 48.8 | 402 |
| Nassarawa | 217 | 42.1 | 299 | 57.9 | 516 |
| Niger | 200 | 37.4 | 335 | 62.6 | 535 |
| Ogun | 195 | 49.2 | 201 | 50.8 | 396 |
| Ondo | 419 | 49.5 | 428 | 50.5 | 847 |
| Osun | 240 | 50.7 | 233 | 49.3 | 473 |
| Oyo | 468 | 50.5 | 458 | 49.5 | 926 |
| Plateau | 281 | 48.2 | 302 | 51.8 | 583 |
| Rivers | 262 | 51.0 | 252 | 49.0 | 514 |

| State | The number of girls enrollees (1,000 people) | Girls (%) | The number of boy enrollees (1,000 people) | Boys (%) | Total (1,000 people) |
|-----------|--|-----------|--|----------|----------------------|
| Sokoto | 130 | 29.7 | 308 | 70.3 | 438 |
| Taraba | 270 | 41.9 | 374 | 58.1 | 644 |
| Yobe | 188 | 39.5 | 288 | 60.5 | 476 |
| Zamfara | 93 | 28.0 | 239 | 72.0 | 332 |
| FCT, Abja | 104 | 47.9 | 113 | 52.1 | 217 |
| Sum total | 10,441 | 45.4 | 12,576 | 54.6 | 23,017 |

Source: Federal Ministry of Women Affairs and Social Development (2008b) *Nigeria Gender Statistics Book*, Appendix 3.5, p.82

There are differences in the race profile. The percentage of children who have enrolled in primary school in their mother language for 4 or less years is 30 percent on average. In the state of Hausa (more than half of Nigerians are the Hausa and most of them are Muslim in the North region) answered it as more than 60 percent. In the states of Yorba and Ibo it was 10 percent or less³⁹.

UNESCO reports that 97 percent of Hausa girls (age from 17-22 years old) who are in poor households receive primary school education for two or less years, and the percentage of Hausa women who have ever studied in the primary school is about 12 percent⁴⁰. In 2003, the number of girls who had never enrolled in primary school was 50 percent in Kano and 89 percent in Jigawa state. In the Northern states such as Kano, Jigawa, Katsina state - which is the poorest areas in Nigeria - there is strong belief among parents that girls do not need education, and they should be in labour force to take care of younger brothers/sisters⁴¹.

In addition, they may have to quit the school early to get married since it is not uncommon for girls to get married at around 14 years or so in the North region. They have to go to Muslim school, and not to the usual primary school.

In this regard, the low primary enrollment rate for girls, especially in the North region, is closely related to gender bias among parents and the community⁴².

³⁹ UNESCO (2010) *EFA Global Monitoring Report, Report 2010: Reaching the marginalized*, Figure 3.11, p.150

⁴⁰ *Ibid.*, p.152

⁴¹ *Ibid.* and p.167. Original data is Rufa'i, R. A. 2006. The education of the Hausa girl-child in Northern Nigeria. Mutua, K. and Sunal, C.S. (eds), . Research on Education. in Africa and the Caribbean, and the Middle East: Crosscurrents and Crosscutting Themes. Greenwich, Conn., Information Age Publishing, inside of pp. 85-108, p. It quotes from 86.

⁴² *Ibid.*, p.167

[Secondary education]

The percentage of school attendance in secondary education (lower and upper secondary education) is over 60 percent among both boys and girls, as shown in Table 9. Compared with primary school education, the percentage of drop-out is high. The rate increases for boys and girls who are 17 years old⁴³.

One of the reasons for drop-out among girls is early marriages (as we mentioned above in table 4). It shows that almost half of the girls who are aged 15 to 19 get married and it seems that they have to drop out school at marriage.

Table 9: Percentage of school attendance and drop-out of secondary education in Nigeria

| Year | Total | Girls | Boys |
|------|-------|-------|------|
| 1991 | 57.0 | 44.0 | 55.0 |
| 1999 | 49.0 | 41.0 | 59.0 |
| 2005 | 62.0 | 54.6 | 70.1 |
| 2006 | 75.7 | 69.6 | 81.7 |

Source: Federal Ministry of Women Affairs and Social Development (2008b) *Nigeria Gender Statistics Book*, Table 3. 6a, p.20

[Tertiary education]

The number of university graduates was about 70,000 in 2002/2003 and about 25,000 in 2004/2005. Varying from year to year, about 40 percent of the total number of graduates were women. As the educational level becomes higher, the number of women becomes less and the percentage of women decreases to about 30% of the total in the master and the doctoral course.

Table 10: The number of tertiary education graduates in Nigeria (unit: person)

| Fiscal year Course | 2000/2001 | | 2002/2003 | | 2004/2005 | |
|-----------------------|-----------|--------|-----------|--------|-----------|--------|
| | Female | Male | Female | Male | Female | Male |
| University graduate | 18,009 | 29,782 | 29,109 | 41,252 | 10,715 | 15,327 |
| Post Grad. Diploma | 2,516 | 7,573 | 1,939 | 3,471 | 1,489 | 3,162 |
| Master's course | 3,106 | 7,714 | 3,308 | 10,748 | 2,033 | 6,532 |
| Doctoral course | 147 | 543 | 199 | 553 | 92 | 336 |

Source: Federal Ministry of Women Affairs and Social Development (2008b), Appendix. 3.34, p.109

[Literacy education]

The national average of adult literacy rate is 75,5 percent and 92,1 percent in urban areas. The younger generation aged 20 years and younger has a high literacy rate because of high school

⁴³ Federal Ministry of Women Affairs and Social Development (2008b) *Nigeria Gender Statistics Book*, p.18

enrollment rate in primary/secondary education. In the case of women, the rate is less than 50 percent, and in the elderly it is in the region of 10 percent.

The women's adult literacy rate is below 20 percent in the North region (26.6% in Katsina state, 19.8% in Jigwa state, 15.6% in Yobe state, and 18.3% in Borno state)⁴⁴.

Table 11: Literacy rate in Nigeria (unit: %)

| Age | Female | | Male | | Total | |
|----------------|--------|-------------|-------|-------------|-------|-------------|
| | Total | Urban areas | Total | Urban areas | Total | Urban areas |
| 15 to 19 years | 71.8 | 90.5 | 78.6 | 93.6 | 75.5 | 92.1 |
| 20 to 29 years | 58.7 | 85.1 | 80.0 | 93.2 | 68.1 | 98.0 |
| 30 to 39 years | 46.6 | 75.8 | 71.2 | 88.3 | 57.4 | 81.7 |
| 40 to 49 years | 38.0 | 62.9 | 66.5 | 84.8 | 52.4 | 74.4 |
| 50 to 59 years | 27.7 | 53.2 | 57.3 | 77.3 | 43.7 | 65.9 |
| Aged 60 and | 13.1 | 25.9 | 42.8 | 63.3 | 31.9 | 47.3 |
| Total | 47.3 | 71.9 | 66.7 | 85.2 | 56.9 | 78.6 |

Source: National Bureau of Statistics (2007) *Gender and Poverty Monitoring*, Table4.1., p.19

[Vocational and Technical education, Higher education]

There are vocational and technical schools called Politechnics and Monotechnics, but the number of schools is not enough and only 10,000 students graduate annually. Number of private vocational schools is not sufficient and the opportunity to undergo training is very limited. In Nigeria, the unemployment rate of the youth is high and support for them is needed by providing training course⁴⁵.

⁴⁴ Data is from National Bureau of Statistics (2007) *Gender and Poverty Monitoring*, Table 4.3, and p.21.

⁴⁵ ICA website <http://www.ica-japan.org/virtualtourj/07NigeriaSchoolJ.html>

3-2 Health

| Health |
|---|
| <p>Abolishment of Female Genital Mutilation (FGM), improvement for violence against women, and abolition of Vesico-Vaginal Fistula (VVF)⁴⁶ are the major issues to be addressed in Nigeria in the health sector. Infantile mortality is at a high level and the medical services of women before and after birth are insufficient. The total fertility rate (Total Fertility Rate; TFR) is at a high level.</p> <p>Assistance for stunted growth in children and the prevention of the spread of infectious disease infection is needed.</p> |

[Governmental policy]

Federal Ministry of Health puts an emphasis on five targeted area; (1) abolishment of FGM, (2) improvement for violence against women (surveillance, control, protection, etc.), (3) improvement for Female Facilitation of Literacy for health (FFLH), (4) Mainstreaming of gender issues in the health field, and (5) abolition of VVF.

As for abolishment of FGM, the FGM enforcement rate in the whole country was 40 percent in 1998 and it increased in 2008. Geographically, although FGM is rarely carried out in the northern region, it is said that about 60 percent of Yorba women carry out FGM (this is one of the main tribes in Nigeria⁴⁷).

Not only does FGM do physical damage to females but also mental damage, and is an issue to be taken very seriously. While promoting the abolition of FGM, FGM conductors need to be supported to find alternative work opportunities since their income source will be lost if the custom is abolished. Therefore, the Ministry of Health carries out both educational training to support understanding of the abolition of FGM, and skills training to assist FGM conductors to find alternative work opportunities (e.g. making ice-cream or yogurt, sewing, etc.) Although these activities are carried out in the pilot areas, it has not been expanded due to budget constraints⁴⁸.

In the FFLH programme, the Federal Ministry of Health, FMWA and WHO work jointly to improve female health conditions, economical independence and literacy. Some machinery (e.g.

⁴⁶ VVF an abnormal fistulous tract extending between the bladder and the vagina that allows the continuous involuntary discharge of urine into the vaginal vault. The cause is inadequate care on giving birth without medical access, or receiving violence. WHO says that in the Sub Sahara Africa, Middle East and Asia, 2 million or more suffer VVF all over the world (NPO Japan VVF website.).<http://blog.fistula-japan.org/>

⁴⁷ From the interview (Ministry of Health).

⁴⁸ From the interview (Ministry of Health).

food processors, fish dryers, irrigation pumps, and mills) were provided to female cooperative associations in some states (Abia, Bouchi, Borno, Delta, Enugu, Kawara, Osun, Cross Rivers, and Sokoto state)⁴⁹.

The gender issues in health sector fall under the jurisdiction of the Federal Ministry of Health. There needs to be greater collaboration with FMWA. However, information exchange or coordination seems to be a challenging matter⁵⁰.

Although the Government of Nigeria is committed a plan, which was the Abja Declaration in 2002 to allocate 15 percent of the total national budget to health sector, it is said that only about 4 to 7 percent has been allocated to health sector in practice⁵¹.

[Medical health]

Support is required to the Human Development area. For example, tropical diseases such as trachoma and malaria and diarrhea, which are the main factors of infant mortality, and are overlooked for support⁵². The mortality rate in the South region is lower than the Northern region, with a similar tendency to education⁵³.

The problem of medical health service is service delivery to the rural area where a large proportion of the population lives. Women in rural area do not have access to transport and have limited access to health care centers. Sometimes they are not able to receive medical checks nor medicine because there are no doctors in their area, even if they can reach the center⁵⁴.

[Nutrient state]

In Nigeria, the percentage of underweight newborns is about 12 percent, and it is closely related to the malnutrition of pregnant women. The percentage of underweight children under 5 years old is 24 percent, and the percentage of stunted children under 5-year-old is 43 percent.

According to *Demographic and Health Survey 2008*, the percentage of stunted boys is higher

⁴⁹ Nenadi E. Usman (2005) "Integration of gender perspectives in macroeconomics". Report submitted to the Commission on the Status of Women, Forty-ninth session, New York, and 28 February - 11 March 2005, pp.4-5

⁴⁹ Ajani (2008), pp.15-16

⁵⁰ From the interview (Ministry of Health).

⁵¹ From the interview (ActionAid).

⁵² From the interview (Ministry of Health).

⁵³ From the interview (WHO).

⁵⁴ From the interview (ActionAid).

(43%) than the percentage of stunted girls (38%). The percentage of stunted children in rural areas (45%) is higher than in urban areas (31%). The percentage of stunted children in the North region (53%) is higher than in the Southern region (22%)⁵⁵.

The mortality rate among children under 5 years old is still in at a high level, although the percentage decreased from 230 persons in 1991 to 186 persons in 2008 per 1,000 person. It is said breastfeeding for at least the first 6 months is desirable for the development of infants; however, only 13 % of total infants are raised with breastfeeding⁵⁶.

Table 12: Infants' nutrition index in Nigeria

| Index | % |
|---|----|
| Percentage of underweight infants (2005 to 2009) | 12 |
| Percentage of underweight under 5 years old (2003-2009) WHO | 24 |
| Percentage of stunting children under 5 years old (2003-2009) WHO | 43 |
| Percentage of obtaining Vitamin A among children under 6 to 59 months | 78 |
| Percentage of households using iodized salt (2003-2009) | 97 |

Source: UNICEF Nigeria website http://www.unicef.org/infobycountry/nigeria_statistics.html

[Family planning]

TFR in 2008 was 6.3 (total average), 4.7 in the urban areas and 5.7 in rural areas⁵⁷. These levels have stayed the same comparatively speaking, and are similar to levels in neighboring West African countries, such as Niger (7.4), Cameroon (4.9), Chad (6.5) and Burkina Faso (6.1) (figures recorded in 2007). The average household size is 4.4 persons, 4.4 persons in urban areas and 4.4 persons in rural areas. This size is relatively small as compared with high TFR⁵⁸.

Early marriage among females is a traditional custom in Nigeria (as previously mentioned). The average of first marriages remains high despite economic development. However, in the rural areas, especially in the North East and North Western region, the average of the first marriage is still low.

⁵⁵ National Population Commission (2008) Demographic and Health Survey 2008, p.164
http://www.unicef.org/nigeria/ng_publications/Nigeria_DHS_2008_Final_Report.pdf

⁵⁶ UNICEF Nigeria office website http://www.unicef.org/nigeria/media_3358.html

⁵⁷ National Population Commission (2008), p.52

⁵⁸ National Population Commission (2008), p.3

Table 13: Average age at the first marriage in Nigeria (unit: number and %)

| | Aged 19 and below | | 19 to 22 years old | | 23 to 26 years old | | 27 to 30 years old | | total (person) |
|-----------------------------------|-------------------|------|--------------------|------|--------------------|------|--------------------|------|----------------|
| | person | % | person | % | person | % | person | % | |
| North (FTC, Niger) | 51 | 8.2 | 162 | 26.1 | 286 | 46.1 | 121 | 19.5 | 620 |
| North East (Borno, Taraba) | 192 | 31.0 | 171 | 27.6 | 155 | 25.0 | 77 | 12.4 | 595 |
| North Western (Kaduna, Kano) | 449 | 72.4 | 229 | 36.9 | 18 | 2.9 | 4 | 0.6 | 700 |
| South East (Abia, Ebonyi) | 5 | 0.8 | 151 | 24.4 | 328 | 52.9 | 148 | 23.9 | 632 |
| South South (Cross-River, Rivers) | 38 | 6.1 | 106 | 17.1 | 330 | 53.2 | 142 | 22.9 | 616 |
| South West (Ekiti, Lagos) | 31 | 5.0 | 69 | 11.1 | 389 | 62.7 | 241 | 38.9 | 730 |

Notes: Since the data was from a sample survey, compared with the result of table 3, average of the age is higher.

Source: Federal Ministry of Women Affairs and Social Development (2009b)

Contraceptive devices used most commonly are condoms (12%), the pill (6%) and LAM (Lactational Amenorrhea Method) (5%), which is a contraceptive methods using lactation amenorrhea. The timing method and other traditional methods are also used⁵⁹. The percentage of contraceptive use is higher in urban areas compared to rural area. Similarly, usage is higher in the South compared to usage in the North region⁶⁰.

Regarding pregnancy and childbirth, the percentage of women who do not have a health center in their neighborhood, or have never received a medical check during their pregnancy by a doctor or nurse is around 50 percent, which is considered high. This is a strong trend in the North West and North East region, and among women with low education and income levels⁶¹.

[HIV/AIDS]

The Government of Nigeria set up the National Action Committee on AIDS (NACA) in 1999 as a the single-window for managing measures against HIV/AIDS, including HIV/AIDS Emergency Action Plan (HEAP) in 2001. The first HIV/AID policy was adopted and implemented in 2003, and the amendment was made in 2010⁶². Each state has the State AIDS Committee (SACA) and it takes the lead in setting up the framework of the HIV/AIDS support which considers gender issues and

⁵⁹ National Population Commission (2008), p.67

⁶⁰ *Ibid.*, p.69

⁶¹ *Ibid.*, p.126

⁶² Unicef Nigeria Office (2007) Information Sheet; HIV/AIDS, http://www.unicef.org/nigeria/HIV_AIDS_150607.pdf

strengthens the staff's capacity⁶³.

The review of HEAP was carried out in 2004 and a correspondence plan to address left-behind issues was designed as the new National Strategic Framework: 2005-2009 in 2005. The 2010-2015 framework includes measures to decrease the number of new AIDS victims. Moreover, in the latest framework, several objectives are identified such as strengthening the national monitoring and evaluation system and making assessment systems more functional and effective under the NACA's leaderships with stakeholders⁶⁴.

According to the National HIV/AIDS and Reproductive Health Survey HIV infection rate was 3.6 percent in 2007⁶⁵. It increased from 1.8 percent in 2003 to 5.8 percent in 2010. The rate fell to 5 percent in 2003, 4.4 percent in 2005 and 3.6 percent in 2007. In the past several years, the 15 to 49-year-old pregnancy women's HIV infection rate decreased; 5.8 percent in 2001, 4.4 percent in 2005. The same applies to 15 to 24-year-old pregnant women; 5.2 percent in 2001 and 4.4 percent in 2005. This trend suggests a slow decline of the number of new HIV infected persons in Nigeria⁶⁶.

Though there is a huge amount of assistance in the field of HIV/AIDS, greater coordination is needed between donors and government⁶⁷.

⁶³ JICA(2010), p.13

⁶⁴ UNAIDS(2010) United Nations General Assembly Special Session (UNGASS) Country Progress Report (Nigeria) http://www.unaids.org/en/dataanalysis/monitoringcountryprogress/2010progressreportsubmittedbycountries/nigeria_2010_country_progress_report_en.pdf

⁶⁵ USAID website. http://www.usaid.gov/our_work/global_health/aids/Countries/africa/nigeria.html

⁶⁶ UNDP (2008) Mid-Point Assessment of the MDGs in Nigeria 2000-2007, p.84

⁶⁷ From the interview (Ministry of Health).

3-3 Agriculture, Forestry and Fisheries

| Agriculture, Forestry and Fisheries |
|---|
| <p>Almost half of the Nigerian labour force is engaged in the agriculture sector. It is the biggest sector for female workers and poor people. It is reported that female farmers have limited access to land ownership or credit, and sometimes men have the right to sell products even if women produce them</p> <p>While the government offers microcredit programmes and support for a cottage industry for small-scaled female farmers, the government has not met the budget allocation for the agricultural sector indicated in the Maputo Declaration; 10 percent of the national governmental budget.</p> |

[Agricultural Policy and Gender]

More than the half of population resides in rural areas, and almost half of the labour force is engaged in the agriculture and forestry industry. As much as 90 percent of the agricultural products are produced by the small-scale farmers in Nigeria⁶⁸.

In the National Special Programme for Food Security (NSPFS) started in 2001, several measures have been taken to increase food production and agricultural income, aiming at reducing domestic starvation by half by 2015 in cooperation with FAO, ADB and IDB. A New Rural Development Strategy was also set up in the same year to promote rural development under the five viewpoints; (1) non-intervention, (2) consistency, (3) participation, (4) sustainability, and (5) equality⁶⁹.

In Nigeria, cassava, Yam potato, and cocoyam are the main agricultural products as well as vegetables (peanuts-in-shell), citrus, tobacco, lubber. Agricultural products such as cocoa, sesame, lubber and tobacco are for export. Production and process of the food for the domestic consumption are mainly done by women.

[Rural life and gender]

The agricultural sector where almost half of the Nigerian labour force is engaged is the biggest field for female workers and poor people. Nigerian agricultural sector is not commercialized and mainly produces foods to sustain households. The poverty rate of agricultural households is higher than non-agricultural households. It is reported that female farmers have limited access to land ownership or credit, and sometimes men have the rights to sell products even if women produce

⁶⁸ Refer to the Table 16 for the labor force. And refer to FAO website. <http://www.fao.org/countries/55528/en/nga/>

⁶⁹ Federal Ministry of Agriculture and Water Resources (2001) *Nigeria Rural Development Sector Strategy*

them⁷⁰. Table 14 shows the percentage of land ownership. The percentage of female land ownership is less than male ownership though the total number of tenancy and landowners is unknown.

Table 14: Land ownership (unit: %)

| | Tenanted type | | Land ownership | |
|--------|---------------|----------------|----------------|-------------|
| | Rents | Share Cropping | Free Use | Distributed |
| Female | 22.45 | 16.22 | 24.22 | 26.41 |
| Male | 77.55 | 83.88 | 75.58 | 73.59 |

Source: Federal Ministry of Women Affairs and Social Development (2008b), Table 6.3, p.57

Regarding livestock, expensive cows or draught animals are more likely to belong to males; 99.48 percent of cows, 98.41 percent of draught animals. Ownerships of less expensive farmed crabs and shrimps among females are only 30% and 17%, respectively⁷¹.

Women in rural areas sometimes make mats, weave the clothes or create potteries at home in between agricultural production to help their agricultural income. Government focuses on these activities and offers support to cottage industry, for example the Damaturu Vegetable Oil, Kwali Pottery, Bayelsa Salt Industries⁷².

In addition, the lending facility for the female small-scale entrepreneurs in rural areas and agricultural sector also exists. Agricultural and Rural Development Bank operates the programme which provides support to women preferably. FMWA and the International First Aid Society (IFAS) carry out training courses of modern honey production technique in 10 states which all contribute to women improving their skills and income⁷³.

When the agricultural machines are introduced or provided as part of the support for rural women in some projects/programs, gender consideration is needed because men often use these machines and women are forced to engage in unmechanized farming in some cases⁷⁴.

[Support system for women workers]

Various institutions are supporting women in the agriculture and forestry field. OxFam is mainly carrying out agricultural support programmes aimed at supporting female small-scale farmers in

⁷⁰ Federal Ministry of Women Affairs and Social Development (2008b), p.56

⁷¹ *Ibid*, p.57

⁷² Nenadi E. Usman (2005) "Integration of gender perspectives in macroeconomics". Report submitted to the Commission on the Status of Women, Forty-ninth session, New York, and 28 February - 11 March 2005, pp.4-5

⁷³ *Ibid*.

⁷⁴ Ajani (2008) , pp.15-16

food security, projects/programmes to reduce poverty, create job, and on gender equality in rural areas. Statistics show 70 percent of the poverty households in Nigeria are living in rural areas. The objectives of these activities are as follows; (1) request for expanding governmental budget for agriculture, (2) request for improvement of both quality and quantity for agricultural investment (agricultural budget execution rate is around 50% at present, and ensuring the 10 percent of the federal and state budget distributed to agriculture field (Maputo Declaration), (3) women's empowerment in terms of finance and access improvement, (4) request for policy change to secure food security by solving incoherence between the state policies and regional (ECOWAS) policies, ideal policies (emphasis on small-scale farmers) and real policies (emphasis on large-scaled farmers).

Oxfam supports the National Agriculture Investment Plan and consults with stakeholders to conduct CAADP (Comprehensive Africa Agriculture Development Programme) as macroeconomic policy support⁷⁵. As direct support for a farmer, campaigns and advocacy activities called Voices for Food Security (VFS) targeting 6 000 small-scaled farmers were carried out and the support for vulnerable women who have no landownership when they bargain to financial institutions to get credit or set the conditions⁷⁶.

In addition, ActionAid is supporting the agricultural field through the programmes called Right to Food Programme and Women's Right Programme. In the former programme, supports for recourse mobilisation and capacity building are carried out for small-scale female farmers.

When providing these supports, there are three key words considering female voice, input goods (land, agricultural chemicals, etc.), and access (to land). In the latter programme, a stand-alone programme and mainstreaming programme are simultaneously carried out. A stand-alone programme is conducted for the purpose of female political participation and reduction of violence against women. The mainstreaming programme aims at supporting setting up legislation on comprehensive women's right and eventually aims at development of Gender Equality Opportunity Bill in the future. The leadership programme promotes women's participation to the local communities or improving the women's status, and the small-scale easy-payment system for women is also conducted⁷⁷.

⁷⁵ It is one of the AU/NEPAD program. It integrates with the regional agriculture policy (ECOWAP) which ECOWAS designed in 2005, and the ECOWAP/CAADP Common Action Plan (2005-2010) was formulated. The Nigeria government has signed the "compact" on October 30, 2009.

⁷⁶ From the interview (Oxfam).

⁷⁷ From the interview (ActionAid). A small-scale revolving loan to female farmers is operated utilizing the fund of about 1 million to 2 million Naira (about 6,500 U.S. dollars), and provides credits to female communities. Interviewees answered

With macro policy support, the World Bank is carrying out the impact survey between rural infrastructure and agricultural technical and inputs⁷⁸. Projects for One LGA One Product (OLOP) are also provided by Japanese government.

that Governmental microcredit does not reach to the people in need, so the program of ActionAid could be complement of them.

⁷⁸ World Bank website <http://go.worldbank.org/FRHK9ZS2L0>

3-4 Economic Activities

| Economic Activities |
|--|
| <p>In spite of high economic growth in recent years, diversification of occupation is limited for females. The underdeveloped manufacturing industry and high unemployment among younger generation are the tasks to be addressed.</p> <p>Through the microcredit policy utilising the National Poverty Reduction Programme (NAPEP), there are economical support and empowerment projects for small-scale female entrepreneurs or female workers.</p> |

[Employment opportunities]

As indicated in Table 15, the unemployment rate in Nigeria was 5.4 percent among males and 5.3 percent among female in 2006. There is a high unemployment rate among the young generation (aged 15 to 24), which was over 10 percent on average. The percentage of underemployment is also high, especially among men.

Table 15: Unemployment rate and under employment rate (unit: %)

| Gender/age | Unemployment rate | Under employment rate | Gender/age | Unemployment rate | Under employment rate |
|--------------|-------------------|-----------------------|------------|-------------------|-----------------------|
| Female total | 5.3 | 18.0 | Male total | 5.4 | 22.1 |
| 15 to 24 | 13.3 | 16.3 | 15 to 24 | 14.7 | 18.1 |
| 25 to 34 | 6.8 | 19.2 | 25 to 34 | 8.2 | 25.6 |
| 35 to 49 | 1.9 | 18.9 | 35 to 49 | 2.0 | 23.6 |
| 50 to 64 | 1.1 | 17.4 | 50 to 64 | 1.3 | 21.2 |
| Over 65 | 0.9 | 12.0 | Over 65 | 1.2 | 16.4 |

Source: Federal Ministry of Women Affairs and Social Development (2007), Table 7.1, and p.36.

If we take a look at the employment rate aggregated by the type of payment, the majority of people in Nigeria are self-employment - for both men and female, followed by unpaid workers, and workers with wage and salaries. The number of male workers receiving wages and a salary is much higher than females, which is not exceeding 10 percent. It shows economical vulnerability of women since about 80 percent of female are in self-employment or are unpaid workers. This will affect women's voice in both society and home.

Table 16: Employment rate aggregated by the type of payment (unit: %)

| Gender/age | Wage/ salary | Allowance in kind | Part time worker | Unpaid worker | Self-employment | Others |
|--------------|-----------------|----------------------|---------------------|------------------|-----------------|--------|
| Female total | 8.3 | 0.5 | 0.9 | 15.6 | 74.5 | 0.3 |
| 15 to 24 | 6.0 | 1.2 | 2.2 | 35.2 | 55.0 | 0.4 |
| 25 to 34 | 9.8 | 0.4 | 0.9 | 16.1 | 72.5 | 0.3 |
| 35 to 49 | 10.4 | 0.3 | 0.6 | 11.6 | 46.5 | 0.3 |
| 50 to 64 | 5.7 | 0.2 | 0.3 | 6.5 | 87.1 | 0.2 |
| Over 65 | 1.4 | 0.1 | 0.4 | 4.0 | 94.2 | 0.1 |
| Male total | 16.9 | 0.7 | 3.1 | 8.3 | 70.4 | 0.6 |
| 15 to 24 | 6.4 | 1.7 | 5.6 | 40.7 | 44.9 | 0.6 |
| 25 to 34 | 16.3 | 0.7 | 4.2 | 6.3 | 71.7 | 0.7 |
| 35 to 49 | 23.6 | 0.5 | 2.4 | 1.2 | 71.6 | 0.7 |
| 50 to 64 | 18.7 | 0.5 | 1.8 | 1.1 | 77.6 | 0.3 |
| Over 65 | 7.1 | 0.6 | 1.2 | 1.9 | 88.7 | 0.4 |

Source: Federal Ministry of Women Affairs and Social Development (2007), Table 7.3, p.37

While the stable economic development has been achieved since 2000, the diversification of occupation has not been witnessed. The variety of jobs that women can engage in is limited. Typically women can be a nurse, a midwife, a kindergarten teacher, an elementary school teacher or a secretary. Men can typically be an engineer, a banker, a livestock medical expert or a college lecturer (amongst others)⁷⁹.

[Women workers in public and private sector]

The number of workers by sectors is indicated in Table 17. The profile of workers in the public sector is 2.5 percent females and 7.0 percent males. Many workers are engaged in the agriculture and forestry field (36.5% for women, 63.5% for men respectively). The trend differs in the retail trade field (30.1%, 15.8%), transportation and communication (0.5%, 6.8%), manufacturing (5.6%, 6.2%), and education (4.8%, 5.2%)

⁷⁹ Federal Ministry of Women Affairs and Social Development (2008b) *Nigeria Gender Statistics Book*, p.43

Table 17: The number of workers classified by industry (unit: the person, %) in Nigeria

| Industry | Female | (%) | Male | (%) | Total |
|---|------------|------|------------|------|------------|
| Agriculture and forestry | 7,029,273 | 36.5 | 12,207,075 | 63.5 | 19,236,348 |
| Fishing | 188,831 | 1.0 | 293,901 | 1.5 | 482,732 |
| Mining | 40,301 | 0.2 | 152,860 | 0.8 | 193,161 |
| Manufacturing industry | 1,197,538 | 6.2 | 1,084,390 | 5.6 | 2,281,928 |
| Electricity, gas, and water | 68,582 | 0.4 | 233,072 | 1.2 | 301,654 |
| Construction industry | 37,445 | 0.2 | 620,749 | 3.2 | 658,194 |
| Retail trade | 5,796,543 | 30.1 | 3,037,550 | 15.8 | 8,834,093 |
| Hotel restaurant business | 163,561 | 0.9 | 53,557 | 0.3 | 217,118 |
| Transportation and communication business | 96,300 | 0.5 | 1,308,250 | 6.8 | 1,404,550 |
| Finance business | 52,088 | 0.3 | 74,337 | 0.4 | 126,425 |
| Real estate business | 187,984 | 1.0 | 226,263 | 1.2 | 414,247 |
| Administration and defense | 477,061 | 2.5 | 1,352,562 | 7.0 | 1,829,623 |
| Education | 915,040 | 4.8 | 994,109 | 5.2 | 1,909,149 |
| Health and social welfare | 292,143 | 1.5 | 183,185 | 1.0 | 475,328 |
| Social services | 727,588 | 3.8 | 1,112,014 | 5.8 | 1,839,602 |
| House helper | 98,320 | 0.5 | 99,616 | 0.5 | 197,936 |
| Others | 16,113 | 0.1 | 50,325 | 0.3 | 66,438 |
| Total | 17,484,163 | 43.1 | 23,083,815 | 56.9 | 40,567,978 |

Source: Federal Ministry of Women Affairs and Social Development (2008b) *Nigeria Gender Statistics Book*, Table 5.2, p.39

[Support system for women workers]

Women Development Centre (WDC) established in each state have been offering vocational training service such as dressmaking and food processing as well as literacy education for women since the 1980s as above previously⁸⁰.

National Directorate of Employment (NDE) under the Ministry of Labor is also providing vocational training service. NDE consists of four units; vocational training, promoting rural employment, SMEs, and special public works. The vocational training comprises four courses; (1) technical-skills acquisition for the young unemployment, (2) business management training for starting small-scale industry, (3) basic agricultural technical training in rural area, and (4) infrastructure construction, and maintenance training. Training for women is provided under the project to improve income and promote job creation. All training is offered free of charge and NDE manages arrangements for course settings, visiting lecturer schedule and so on.⁸¹.

⁸⁰ JICA website. <http://www.jica.go.jp/project/nigeria/0604889/01/index.html>

⁸¹ From the interview (NDE).

[Informal sector]

Cross-border trade and global trade liberalization (especially agricultural sector) as international factors sometimes affect poverty and gender. Although women's labour force contributes to the informal sector in cross-border trade, problems of HIV/AIDS or violence occur because of an underdeveloped legal system and inadequate infrastructure. As the trade is globalizing, prices of agricultural products, especially rice and income of domestic farmers are declining. The huge influx of cheap textiles also affects the domestic textile industry where many female workers are engaged.⁸².

[Support for micro enterprises]

Government supports four NGOs; Nigerian Association of Women Entrepreneurs, Country Women Association of Nigeria, Women Opinion Leaders Forum, and National Traders and Market Leaders Council of Nigeria which offer microcredit projects with funds from NAPEP in order to reduce the poverty of women.

Soft loan packages of 116 million US dollars through NAPEP were provided to the National Council on Women Societies (NCWS) to support small-scaled female entrepreneurs. It is estimated that 4,000 entrepreneurs receive benefits. The Women Finance Trust was established to support women's empowerment from the multidimensional perspectives⁸³.

In addition, FMWA and the Nigerian Agricultural, Cooperative and Rural Development Bank (NACRDB) operate the microcredit programme called Women Fund for Economic Empowerment (WOFEE) aiming at strengthening of women's economical empowerment in rural area under the support of UNDP, UNIDO, FAO and USAID⁸⁴.

[Migration]

- International migration

(1) Inflow

Nigeria has the largest population and economic scale in the West Africa, so that immigration from neighboring ECOWAS countries has occurred in recent years. Although the total number of immigration was 477,135 persons in 1991, it increased to 971,450 in 2005, and to over 1,100 000 in 2010. 74 percent of the immigrants are from ECOWAS countries; from Benin (29%), Ghana (22%) and Mali (16%).

⁸² From the interview (ActionAid).

⁸³ Nenadi E. Usman (2005), pp.4-5

⁸⁴ From the information of WOFEE pamphlet.

The number of refugees is a small amount (0.9% in 2007) of the total immigrants and they come mainly from Liberia. IOM reported that the number of Nigerian victim of human trafficking was 2,537 persons since 2009⁸⁵.

It also shows the tendency that relatively high-skilled workers, for example, managers, corporate managers, physics, mathematics and a technology specialist flow into Nigeria. Most of them are the specialist and engineer from oil-related companies from Europe (47.37%) or ECOWAS countries (42.84%)⁸⁶.

In 2008, the ECOWAS Common Approach on Migration was endorsed among ECOWAS countries; the guideline for the better migration policy in the West Africa area to protect human rights, ensure the freedom of movement, migrant workers and female workers rights, and prevention for human trafficking was documented in the approach.

Bilateral immigration agreement was adopted with EU countries (Italy, Spain and Switzerland) and ECOWAS countries (Benin, Ghana and Togo)⁸⁷.

(2) Outflow

There is limited outflow from Nigeria and the net amount of population outflow rate per 1,000 persons was -0.2 in 2000, -0.4 in 2005 and -0.3 in 2010.

Nigerian living overseas were about one million in 2007; 24 percent living in Sudan, 14 percent in US, 9 percent in UK, 8 percent in Cameroon, 5 percent in Ghana. It is reported there is a tendency that many of Nigerians who live in overseas stayed on in foreign countries after they graduated/ acquired higher skills. The brain drain of the Nigerian physicians who received training in Nigeria has occurred, and 14 percent of the total physicians flow into overseas⁸⁸.

According to the report of the Nigeria Ministry of Foreign Affairs in 2008, at least about 60,000 Nigerians tried to enter EU countries through the North⁸⁹.

⁸⁵ IOM (2010) Migration in Nigeria: A Country Profile 2009, .15

⁸⁶ http://publications.iom.int/bookstore/index.php?main_page=product_info&cPath=41_42&products_id=574

⁸⁷ *Ibid.*

⁸⁸ *Ibid.*

⁸⁹ *Ibid.*, p.16

⁸⁹ U.S. think tank MPI website. <http://www.migrationinformation.org/Profiles/display.cfm?ID=788>

The number of people who are aiming to studying abroad, and not seeking jobs in Nigeria is increasing rapidly; 10,000 in 2000 to 22,000 persons in 2006; 6,000 headed to the US, and 2,700 to the UK in 2007 (this number is expected to increase to 30,000 in 2030)⁹⁰.

Although Nigerian women have few opportunities to move internationally, there are some female victims of human trafficking and they are obliged to move overseas. Since Nigeria is a center and key point in the West Africa, human trafficking of women and children is taking place. According to the 2006 report of the United Nations Office on Drugs and Crime (UNODC), 83 percent of the child victims of human trafficking in the West Africa were carried out via Akwa Ibon state and 94 percent of female victim from Edo state. They are forced to be engage in the sex industry in Europe⁹¹.

(3) Overseas remittance

According to the data of the Nigeria Central Bank, the amount of overseas remittance sent to Nigeria increased rapidly from 2.3 billion US dollars in 2004 to 17.9 billion US dollars in 2007, equating to 6.7 percent of GDP. The origin of the remittances is from the US, UK, Italy, Canada, Spain, France, Egypt, Equatorial Guinea and China⁹².

- Domestic migration

Similar to neighboring countries, domestic migration occurs mainly among men. Male workers, especially the younger workers, tend to move to the bigger cities such as Lagos (with 18 million populations), Port Harcourt, Ibaran city or the South region where 65 percent of factories, educational research institutions and agricultural plantations are located. Some reported that deterioration of the city environment has affected by migration, which sometimes impacts negatively on the infant death rate⁹³.

⁹⁰ *Ibid.*

⁹¹ *Ibid*

⁹² IOM (2010), p.17

⁹³ Nwokocha (2007) Engaging the Burden of Rural-Urban Migration in a non-regulatory System: the Case of Nigeria, presented at the Workshop organized. by the Irmgard Coninx. Foundation and the Institute. for Migration Research. and Intercultural Studies (Osnabruck University) held at the Social Science Research Center Berlin on 25-27 October 2007. http://www.irmgard-coninx-stiftung.de/fileadmin/user_upload/pdf/urbanplanet/Nwokocha.pdf And a U.S. think tank MPI website.

4. Gender issues which should be particularly taken into consideration in future JICA and other donors/NGO's intervention in Nigeria

Government of Nigeria and Japan agreed on three priority areas through several the economic cooperation policy meetings between the two governments. The prioritized areas are; (1) basic human needs (basic health and basic education), (2) agriculture and agricultural development, and (3) rural infrastructures (rural water and electricity supply) and the gender issues are recognized as important cross cutting issues. Currently there are about 20 on-going projects in the form of technical assistance and grant-in-aid (as of March 2011)⁹⁴.

(1) The necessity for the support considered social and cultural factors

Nigeria has a diversified social and cultural background with more than 250 ethnic groups and multi-religious society among them Islam, Christianity and others. There are 774 LGAs and 36 states under 6 geographical zones. As Nigeria is a Federal Republic, each state has the authority to decide on their own policies and legislations. In this regard, there poverty and gender issues need to be considered with greater coordination when development projects/ programs are conducted.

Currently JICA conducts two technical assistance projects on gender issues. One is the project on Activation of Women Development Centers to improve Women's Livelihood Phase 1 and 2 (since January 2007 to the present) and the other is the project for Improving Maternal, New Born and Child Health in Lagos State (since February 2010 to the present).

The former project was implemented because the income level and female adult literacy rate is relatively low in Kano state (see Table 7), and the latter is because there is a severe shortage of health equipments, staff and services for the care of pregnant females⁹⁵. On selection of the project area, there needs to pay attention to the geographical balance, based on the objective data or evidences. Also there needs to be well coordinated arrangements and exchanging of information among donors and government meetings in order to avoid duplicated projects/ programmes or 'aid orphans', which sectors/areas to be remained without aid.

(2) Supports in the area of vocational and technical training

Although many organizations have already carried out support for basic education, the support for vocational training is insufficient considering the high unemployment rate of the youth. It would

⁹⁴ Ministry of Foreign Affairs, Japan (2010) Country Data book: Nigeria (Kunibetsu data book in Japanese)
http://www.mofa.go.jp/mofaj/gaiko/oda/shiryo/kuni/10_databook/pdfs/05-32.pdf

⁹⁵ JICA website <http://www.jica.go.jp/project/nigeria/001/outline/index.html>

be useful to support to extend from building schools to improving the curriculum (which meets demand of the labour market), and capacity building for teachers. At the same time, considering the difficult situation for Nigerian women to obtain wage labour opportunities, especially in rural area, the project would be collaborated with the project for economic activities such as support for cottage industry (e.g. JICA's One LGA One Products).

Similar to the educational sector, there are many on-going projects in the health sector. Eradication of traditional practices of FGM or female diseases like VVF requires assistances for the long term to change the culture. While promoting abolition of FGM, FGM conductors need to be supported to find alternative work opportunities since their income source will be lost if the custom is abolished. Therefore, a comprehensive approach is needed.

(3) Support for coordination among ministries and for gender mainstreaming into sectoral policies

Though the gender focal points were set up in other related ministries and government offices, coordination among ministries and offices is not adequate and there needs to be a coordinated framework for the coherent measures. It is also expected that information needs to be gathered to understand how these focal points actually work and to know where there is room for improvement.

In addition, it would be useful to survey basic information and good practices on gender issues or the measurements at the state level in Nigeria, where gender-related laws or legal systems are well functioning, such as Edo, Ondo, Enugu and Kebbi state as a reference point for other states.

JICA project on Activation of Women Development Centers to improve Women's Livelihood Phase 1 achieved the objectives to activate WDCs and empower women at the grass-root level. On the other hand, it is reported that there remain the challenges to collaborate the state government which manage the state budget. At the phase 2 project which is now on going, it is important not only to promote the partnership among federal and state ministries and regional institutions, but also formulating the comprehensive collaboration including budget allocation.

5. On-going Gender Projects

The development assistance to Nigeria is carried out by many bilateral donors, international organizations and NGOs. Main donors are US, Denmark, UK and Netherlands for bilateral assistance, and the World Bank (IDA), EC and UNICEF for international organisations shown in Table 18. Support for gender issues is mainly facilitated by the UN Women (previous UNIFEM), United Nations Population Fund (UNEP), UNICEF, the World Bank, DFID (UK), USAID (US) - which are listed in Table 19.

Table18: The amount of bilateral ODA for Nigeria (unit: 1 million U.S. dollar)

| | 2005 | 2006 | 2007 | 2008 | 2009 |
|-------------|---------|---------|-------|-------|------|
| Australia | 6.5 | 0.6 | 321.3 | 0.6 | 0.7 |
| Denmark | .. | 85.2 | 95.6 | 81.6 | 31.2 |
| France | 1,422.9 | 2,027.2 | 11.8 | 11.9 | .. |
| Germany | 1,180.9 | 1,710.4 | 25.5 | 27.5 | 26.7 |
| Italy | 529.6 | 755.0 | 1.7 | 3.8 | .. |
| Japan | 69.2 | 1,631.6 | 26.8 | 29.0 | .. |
| Netherlands | 202.0 | 228.8 | 344.0 | 1.7 | 4.5 |
| U.K. | 2,200.9 | 3,185.7 | 286.0 | 47.2 | .. |
| U.S. A | 99.0 | 787.2 | 240.6 | 363.9 | .. |

Source: Extract from OECD/DAC Statistics. <http://stats.oecd.org/qwids/>

As for the Japanese ODA, the gender issue is a priority area agreed to at meetings for Japan-Nigeria Economic Cooperation Policy. JICA conducts two projects related to gender issues; the one is the project on Activation of Women Development Centers to improve Women's Livelihood Phase 1 and 2 (since January 2007 to the present), and the other is the project for Improving Maternal, New Born and Child Health in Lagos State (since February 2010 to the present). There have been several projects as grants-in-aid such as support for prevention of infection diseases for children including girls through UNICEF, support for Eboni state women in manufacturing salt, and support for improving girls' literacy rate and training course in Gombe state.

5-1. International Organization

The framework of the assistances for Nigeria among international organizations is indicated in *Nigeria: UNDAF II 2009-2012: United Nations Development Assistance Framework* and it consists of four priority areas. Gender issue are dealt with as a cross cutting issue in the one of the priority area, Transform Social Delivery, and each organization pays attention to gender issues when they provide assistance⁹⁶.

UN Women focuses on five thematic priorities; (1) Expanding women's voice, leadership and participation, (2) Ending violence against women, (3) Strengthening implementation of women's peace and security agenda, (4) Enhancing women's economic empowerment , and (5) Making gender equity priorities central to national, local and sectoral planning, budgeting and statistics⁹⁷.

Project details which were conducted until 2010 by UN Women (previous UNIFEM) are as follows.⁹⁸

(i) Governance

- Activity for enhancing women's capacity to participate political opportunities
- Database management and maintenance for expanding the political rights of both the elector and candidate towards an election
- Affirmative action for promoting women's political participation

(ii) Economical empowerment

- Support for realising the economic process which incorporated the viewpoint of the gender in a state level while NEEDS/SEEDS was met (e.g.; development of the model projects for cassava production at LGA in Kogi state, economic model development in five states (Akuwa Ibon Adamawa, a potato, Kaduna, Ekiti)

(iii) HIV/AIDS

- Support for the establishment of effective systems to response gender issues at NACA and SACA, and strengthening for the capacity of gender advisers, staffs, and NACA gender technical committee

(iv) Violence based on Gender (VBG)

- Designing the cooperation framework for eradication against women
- Implementation of pilot projects (e.g. Eboni and Cross River state)
- Establishment of committee for VBG at LGAs, and system to shelter victims of VBG (like a one-stop-shop including participation of the police, health care experts, lawyers, etc.)
- Advocacy on prevention/abolition for domestic violence

⁹⁶ JICA (2010) p.12.

⁹⁷ From the information of the UN Women National Programme Office at February, 2011.

⁹⁸ JICA (2010) p.12. These 4 priority areas were different from the 5 priority areas listed above in 2011.

UNFPA has conducted projects/programmes based on three fields; (1) gender equality and (2) reproductive health⁹⁹, and (3) population and development, and projects details are as follows¹⁰⁰;

- Political empowerment
(e.g.; In the pilot projects in 12 states, one of the objectives of these projects is to improve the women's economic empowerment, and promote advocacy for parliaments, community leaders, and youth)
- Support for the violence based on gender
(e.g.; research and analysis on violence against women and activities for setting up shelters)

Projects/programmes conducted by UNICEF and the World Bank are listed in Table 19 and both of the organisations provide assistance in the health and education fields.

5-2. Bilateral Donors

Bilateral donors that conduct projects/programmes concentrating on gender issues are mainly DFID and USAID. Their projects/programmes are listed in Table 19. Their priority areas for Nigeria are both health and education sector as well as governance issues.

5-3. NGO

International NGOs such as ActionAid and Oxfam are also conducting projects/programmes in the gender field. Project/programme details were indicated in the section 3-3.

Table 19: The list of the gender support in each assistance organization

| Project/programme | Donor | Implementation organization | Duration | Budget | Field | Outline |
|--|----------------------------|-----------------------------|-----------|--------|-----------|---|
| International Organization | | | | | | |
| Strategy for Acceleration of Girls' Education in Nigeria (SAGEN) | UNICEF | Ministry of Education | 2003- | N/A | Education | N/A |
| Girls' Education Project (GEP) | UNICEF DIFID (above) | Ministry of Education | 2004-2007 | N/A | Education | To achieve MDG3 Goal 3 through improving the quality of life of girls in Nigeria by a collaborative approach to girls' education. |
| Prevention of | UNICEF | N/A | 2002- | N/A | Health | To provide a comprehensive |

⁹⁹ For the medical supports, UNFPA operates projects based on 300 institutions in 12 states in corporate with the Federal Ministry of Health, state governments. (JICA (2010) p.13).

¹⁰⁰ JICA (2010) p.12.

| Project/programme | Donor | Implementation organization | Duration | Budget | Field | Outline |
|--|-------------------------------|--|------------------------|---------------|-------------------|--|
| Mother to Child Transmission (PMTCT) | | | | | | package of care, including information on HIV/AIDS/ PMTCT/ infant feeding, voluntary counseling and testing services, antiretroviral drugs, psycho-social care and access to treatment for opportunistic infections and publish guidelines and training manuals for PMTCT. |
| Paediatric AIDS | UNICEF | N/A | 2006- | N/A | Health | This project supports capacity building for pediatrics AIDS in critical areas and provides update the Pediatric Treatment Guidelines so as harmonize the Pediatric Standard Operating Protocols. Based on this also, Training Modules were developed for all cadres of health workers. |
| Protection of Orphans and Vulnerable Children (OVC), OVC Rapid Assessment, Analysis and Action Planning | UNICEF USAID UNAI DS | the Federal Ministry of Women Affairs (FMWA) | 2004- 2006- 2010 | N/A \$1.6b | Social protection | OVC Rapid Assessment, Analysis and Action Planning process |
| Strengthening Agricultural. Production Systems and Facilitating Access to Markets-Nigeria Commercial Agriculture Development Project | World Bank | N/A | 2009- 2014 | N/A | Agriculture | To measure effects of rural infrastructure, improved seeds etc through impact evaluation with funding from the GAP, the AFTPM Gender Unit to measure any gender differences in treatment impact. |
| Nigeria Federal Science & Technical Education at Post-Basic Levels (STEPB) | World Bank | Ministry of Education | 2007- 2013 | \$180m | Education Gender | The project will support capacity enhancement in post-basic science and technology (S&T) education. Its design benefits from a lengthy and inclusive participatory process in which workshops, formal and informal stakeholder |

| Project/programme | Donor | Implementation organization | Duration | Budget | Field | Outline |
|---|------------------------------|--|-----------|--------|---|--|
| | | | | | | dialogues and a year's worth of analytic work preceded its formulation. |
| Nigeria State Education Sector Project | World Bank | Ministry of Education | 2007-2011 | \$65m | Education Gender | To improve the quality of basic education in targeted Local Government Areas (LGAs) in the participating States focusing particularly on girls' participation while improving the quality of teaching and learning by strengthening the capacity of schools to participate in and manage resources more efficiently. |
| Women Fund for Economic Empowerment (WOFEE) | UNDP, UNIDO, FAO, USAID, etc | Ministry of Women Affairs and Social Development (FMWASD) Nigerian Agricultural, Cooperative and Rural Development Bank (NACRDB) etc | N/A | N/A | Gender Economic activity | Providing microcredit service for women's entrepreneurs |
| Bilateral Organization | | | | | | |
| Sexual and Reproductive Health for HIV/AIDS Reduction | DFID | N/A | 2001-2009 | £52m | Population, reproductive health | To increase behaviour conducive to sexual and reproductive health among poor and vulnerable people in Nigeria |
| Gender and Growth | DFID | N/A | 2008-2010 | £0.8m | Gender growth, investment | To assess relationship between gender equality and growth |
| Security, Justice and Growth Programme | DFID | N/A | 2001-2010 | £32m | The government and a citizen company Improvement of legal systems support | To support the development of Nigeria-Led justice sector reform so that pro-poor policies are implemented. |

| Project/programme | Donor | Implementation organization | Duration | Budget | Field | Outline |
|--|-------|--|-------------|---|--|---|
| Routine Immunisation | DFID | N/A | 2006-2013 | £29m | Health Infection disease prevention | Improved delivery of routine immunisation for children and women of reproductive age via the primary health care system in 4 to 6 low-coverage states in Northern Nigeria. |
| Girls Education Project | DFID | N/A | 2004-2011 | £39m | Basic education | Civil Society , State Houses of Assembly & Government demonstrate improved voice and accountability processes |
| Economic Growth and Environment | USAID | the Women Farmers Advanceme nt Network (WOFAN) | 2007-2010 | 2007-2009: \$48.2 m 2010: \$29.5 m. (expected) | Agriculture Health Advocacy | To support activities to improve gender relations by encouraging the involvement of men and women in the agricultural project intervention at all levels of the project cycle and achieve the access to safe drinking water and safer sanitation. |
| Northern Education Initiative (NEI) | USAID | Creative Associates International, Inc. | 2009 - 2013 | \$43m (USAID education funds: \$32.6m; USAID HIV [PEPFAR] funds: \$11m) | Basic education Health | To implement support for basic education for girls in the focus States of Bauchi and Sokoto. The children will also be provided with referrals to health centers in their locality that are supported by additional USAID health and HIV interventions. |
| Targeted States High Impact Project (TSHIP) | USAID | Johns Hopkins Program for International Education in Gynecology and Obstetrics (JHPIEGO) | 2009-2014 | \$85m | Health | Geographic Focus: Bauchi and Sokoto States |
| Improved Reproductive Health in Nigeria (IRHIN) | USAID | Society for Family Health | 2005-2010 | \$16m | Health | Geographic Focus: Abia, Cross River and Kaduna States |
| Maternal Child Health Integrated Project (MCHIP) | USAID | JHPIEGO | 2009-2014 | N/A | Health | Geographic Focus: Kano, Katsina and Zamfara States |
| Fistula Care | USAID | Engender Health | 2009-2014 | N/A | Health | Geographic Focus: Kano, Katsina, Kebbi, Sokoto, Zamfara, Ebonyi and Bauchi States |

Note1: Since UNWomen (the old UNIFEM) did not have a project list for every country in a website etc., it is not

contained in the above-mentioned list. Refer to the explanation by a part for the existing predicate of the list upper part.

Note2: 1 US dollars = 81.0 yen. 1 UK Pound = 1.61 US dollars = 130.41 yen (According to the IMF exchange rate as of 25 March, 2011 http://www.imf.org/external/np/fin/data/rms_rep.aspx)

Source: Create from each organization website.

6. Gender Information Sources

6-1 List of Organizations related to Gender

| Name of Organization | Area of Specialization | Activity | Contact |
|---|------------------------------------|--|---|
| Administration official | | | |
| Ministry of Women Affairs and Social Development | Gender at large | Gender mainstreaming | Mrs. Joy Ajoh, Deputy Director, Department of Women Affairs |
| Central Bank of Nigeria | Financial sector Microfinance | Microcredit etc. which a women also contains | Mr. B. I. Adamu, Deputy Director, Development Finance Department |
| National Bureau of Statistics | Statistics | Gender statistics | Mr. Ichedi S.J., Statistician/Economist |
| Ministry of Education | Education | The educational opportunity to a women is equal. | Mrs. S.E. Okafor, Gender Education Desk Officer Mr. Muhammad-Sani Usman, National Adviser/Consultant |
| Ministry of Health | Health | Equality of health access to a girl and a women, support | Mrs. Adenike Etta, Head, Gender Branch |
| National Directorate of Employment | Employment, labor, social security | Training to female workers, employment support to a girl and a women | Dr. S.N. Mfam, Director, Policy, Research & Statistics |
| National Poverty Eradication Programme | Poverty reduction | Microcredit, CCT reduction support | |
| Federal Ministry of Agriculture & Rural Development | Agriculture | Activity support of the women to a farm village and the agricultural field | Mr. Zacchaeus Olu Atte, Research, Statistics and Communication Services |
| International organization | | | |
| WHO | Health | Equality of health access to a girl and a women, support | Dr. Cephas Tsevende Ityonzughul, National Professional Officer-Guinea Worm Eradication |
| World Bank | Gender support | Gender support in health, education, the agricultural field, etc. | Mr. Dele E. Oladokun, Communication Associate |

| Name of Organisation | Area of Specialisation | Activity | Contact |
|----------------------|--|---|---|
| NGOs | | | |
| ActionAid | Grass-roots support including gender support | Female support in a farm village, microcredit support, etc. | Ms. Ifeoma Charles-Monwuba, Deputy Country Director/Head of Programmes Ms. Constance Okete, Programme Officer Ms. Patience Ekeoba, Women's Rights Advisor |
| Christian Aid | Grass-roots support including gender support | Support in the health field, etc. | Mr. Usie Charles Emmamuzou, Senior Programme Officer Mr. Ufuoma Festus Omo-Obi, Senior Programme Officer Mr. Lucky Palmer, Senior Programme Officer |
| Oxfam | Grass-roots support including gender support | Support in health and education | Mr. Sebastian Tiah, Country Director |
| Consultant | | | |
| Nice View Media | | | Mr. John Chiahemen |

As of January 2011

6-2 List of Reports and references related Gender

- Actionaid (2009) *Women and Cross-Boarder Trade in Nigeria*
- Federal Ministry of Women Affairs and Social Development (2008a) *NIGERIA Gender Economic Indicators*
- Federal Ministry of Women Affairs and Social Development (2008b) *Nigeria Gender Statistics Book*
- Federal Ministry of Women Affairs and Social Development (2008c) *Strategic Implementation Framework and Plan*
- Federal Ministry of Women Affairs and Social Development (2009a) *Engendering National and State Budgets: Impact on Sectoral Plans and Policies*
- Federal Ministry of Women Affairs and Social Development (2009b) *Survey and Development of Social Strategic Framework on Reduction of Maternal Mortality in Nigeria*
- Federal Republic of Nigeria (2009) *Social Statistics in Nigeria*
http://www.nigerianstat.gov.ng/ext/latest_release/ssd09.pdf
- The Japan International Cooperation Agency (JICA) (2010) *Project report on Activation of Women Development Centers to improve Women's Livelihood Project Phase 2* (in Japanese)
- National Planning Commission (2004) *Meeting Everyone's Needs* (PRSP)
[http://siteresources.worldbank.org/INTPRS1/Resources/Nigeria_PRSP\(Dec2005\).pdf](http://siteresources.worldbank.org/INTPRS1/Resources/Nigeria_PRSP(Dec2005).pdf)
- National Bureau of Statistics (2007) *Gender and Poverty Monitoring*
- Ministry of Foreign Affairs, Japan (2010) *Country Data book: Nigeria* (Kunibetsu data book in Japanese)
http://www.mofa.go.jp/mofaj/gaiko/oda/shiryo/kuni/10_databook/pdfs/05-32.pdf
- OECD (2010) *African Economic Outlook*
<http://www.africaneconomicoutlook.org/en/>
- OECD/DAC Statistics
http://www.oecd.org/department/0,3355,en_2649_34447_1_1_1_1_1,00.html
- OECD, The Social Institutions and Gender Index (SIGI)
<http://genderindex.org/country/nigeria>
- UNDP (2009) *Human Development Report Nigeria 2008-2009*
- Usman (2005) "Integration of gender perspectives in macroeconomics". Report submitted to the Commission on the Status of Women, Forty-ninth session, New York, and 28 February - 11 March 2005
- Women's Aid Collective (2008) *CEDAW and Accountability to Gender Equality in Nigeria: A Shadow Report*
http://www.iwraw-ap.org/resources/pdf/41_shadow_reports/Nigeria_SR_by_WACOL_NGO_Co

[alition.pdf](#)

<Education >

Okojie (2002) Gender and Education as Determinants of Household Poverty in Nigeria, Discussion Paper No. 2002/37, UN University, World Institute for Development Economics Research

http://www.wider.unu.edu/publications/working-papers/discussion-papers/2002/en_GB/dp2002-37/

UNICEF (2007) INFORMATION SHEET: Girls'Education, Nigeria Country Office, September 2007

http://www.unicef.org/wcaro/WCARO_Nigeria_Factsheets_GirlsEducation.pdf

UNESCO (2010) *EFA Global Monitoring Report, Report 2010: Reaching the marginalized*

<http://www.unesco.org/new/en/education/themes/leading-the-international-agenda/efareport/reports/2010-marginalization/>

<Health>

Federal Ministry of Women Affairs and Social Development (2006) *Needs Assessment of Vesico-Vaginal Fistula (VVF) Patients. in Nigeria: Report of Field Study on Incidence of VVF in Sixteen States*

UNIFEM (2006) *Mainstreaming Gender Equality into National Response to HIV and AIDS : Nigerian Case Study*

http://www.unifem.org/attachments/products/mainstreaming_gender_nigeria.pdf

UNICEF (2009) *The State of the World's Children 2009: Maternal and Newborn Health*

http://www.unicef.ca/portal/Secure/Community/502/WCM/PRESS/SOWC09/SOWC09_eng.pdf

UNDP (2008) *Mid-Point Assessment of the MDGs in Nigeria 2000-2007*

<Agriculture >

Ajani (2008) Gender Dimensions of Agriculture, Poverty, Nutrition and Food Security in Nigeria, University of Ibadan

<http://www.ifpri.org/sites/default/files/publications/nssp05.pdf>

Ogunlela and Mukhtar (2009) Gender Issues in Agriculture and Rural Development in Nigeria: The Role of Women, *Humanity & Social Sciences Journal* 4 (1)pp.19-30

[http://www.idosi.org/hssj/hssj4\(1\)09/3.pdf](http://www.idosi.org/hssj/hssj4(1)09/3.pdf)

Federal Ministry of Agriculture and Water Resources (2001) Nigeria Rural Development Sector Strategy

<Economic Activities>

Nwoye (2007) Gender Responsive Entrepreneurial Economy of Nigeria: Enabling Women in a Disabling Environment, *Journal of International Women's Studies* Vol. 9 #1 November 2007

<http://www.bridgew.edu/SoAS/jiws/Nov07/MayNwoye.pdf>

Duke (2009) Trade Policies, Women's Empowerment and Gender Equality, Expert Meeting on Mainstreaming Gender in Trade Policy, Geneva, 10-11 March 2009

http://www.unctad.org/sections/wcmu/docs/ciem2p14_en.pdf

7. Definitions

Technical Terms

| Term | Explanation |
|--------------------------|---|
| Gender | Gender means social and cultural differences between men and women. Sexual differences in biological terms basically cannot be changed, but gender differences which mean social disparity in roles and relationships between men and women vary depending on time and place and they can change, since they are defined by people's way of thinking and sense of values. The word "gender" is used in phrases such as gender equality, gender role, gender analysis and gender balance, etc. |
| Gender mainstreaming | This is a strategy to involve women's participation in design, implementation, monitoring and evaluation of policies and programs on any political, economic and social occasion just as men's are involved, so that both men and women can gain equal benefit from the activities. The ultimate goal for gender mainstreaming is to achieve gender equality. |
| Gender focal point | This is an administrative official to promote gender equality, who is appointed in each department of government ministries. The official works for gender mainstreaming in government policies, systems and programs. |
| Gender responsive budget | It should be understood how national and local government budgets affect both men and women by conducting analysis of the budgets from the perspective of gender equality. The aim is not just to increase budgets for programs targeted at women but also to allocate budgets to achieve gender equality (for example, budgets for childcare services and allowances). |

| | |
|----------------------------|--|
| Reproductive health/rights | This means healthcare and rights that are related to gender and reproduction. The aim is to allow people to enjoy safe and satisfying sexual lives and the freedom to decide whether to have children or not and when and how many. |
| National Machinery | This is a national-level administrative entity in charge of issues related to women to promote gender equality. It develops and implements women-related policies and promotes implementation of measures with gender equality in mind in government ministries. |
| Women's Empowerment | Empowerment means paving the way for women who have been eliminated from decision-making and disempowered because of gender discrimination. Opportunities for them to participate in decision-making are provided so that they can achieve self-empowerment and be aware of gender issues and, hence, transfer such awareness into action. The word is also used in the phrase, "economic empowerment of women." |
| Access / control | This means putting any women worker at a disadvantage in the workplace by sexual words or actions or deterioration of her work environment because of such words or actions. It includes words and deeds by which female students are obstructed from learning opportunities at school or women are robbed of the chance to participate in social activities. |
| Reproductive activities | This means activities to bear and raise children, or in other words, activities to "reproduce the next generation." It includes activities of families to maintain their daily lives such as laundry and cooking and to reproduce labour power. |
| Informal sector | This refers to forms of economic activity performed by small family businesses. According to the definition of ILO, in this sector, such businesses use simple skills, have insufficient capital or specific location bases, employ no or only a few employees, receive no |

| | |
|-------------------------------------|--|
| | protection under the legal system and lack appropriate accounting capability. |
| Micro-financing | This is a small-scale financing system for low-income people and small businesses to increase the income of the poor through provision of opportunities to enjoy financial services such as petty loans, savings and insurance. It is often targeted at female farmers in rural areas as typified by the Grameen Bank in Bangladesh. |
| Non-formal education | This refers to educational activities developed to provide lifelong learning opportunities, literacy education and life-skills education in addition to formal school education. Normally, it targets people, whether adults or children, who have not received any school education or insufficient education (in quality). Typically, the content, scale, target and implementation methods vary significantly. |
| Millennium development goals (MDGs) | The MDGs are composed of 8 goals. These goals were established by incorporating the UN Millennium Declaration and international development goals adopted at major international meetings and summits held in 1990s into a larger common framework. The Millennium Declaration was adopted at the UN Millennium Summit held in September 2000 to present a clear vision of the role of the United Nations in the 21st century on the themes of peace and safety, development and poverty, the environment, human rights, good governance and special needs of African countries. |

Index explanation

| Term | Explanation |
|---|--|
| Gini coefficient | This is an aggregate numerical measurement to indicate inequality in income distribution. It is measured as a value between 0 and 1, with “0” implying complete equality and “1” complete inequality. If the value exceeds 0.4, it is generally determined that the level of inequality is high. |
| Total fertility rate (TFR) | This is the total fertility rate of women in the reproductive age bracket (15-49 years old) in a certain year. It indicates the average number of children a women delivers in her lifetime based on the fertility rate of her age bracket for that year. |
| Under-one mortality rate | Mortality of infants under one year old defined as the number of deaths per 1,000 live births. It is calculated as follows: $\text{Number of infant deaths under one year old during the year} \div \text{number of live births during the year} \times 1,000$. |
| Under-five mortality rate | Mortality of infants under five years old defined as the number of deaths per 1,000 live births. It is calculated as follows: $\text{Number of infant deaths under five years old during the year} \div \text{number of live births during the year} \times 1,000$. |
| Under-five mortality rate | 1 Annual number of mothers who die among 100,000 cases of delivery due to pregnancy. |
| Rate of assisted childbirth | This is the rate of childbirth in which public healthcare workers including doctors, nurses and midwives or trained or traditional assistants offer assistance. |
| Oral Rehydration Therapy (ORT) use rate | The rate of using oral rehydrates salt or substitute solution for under-five infants having diarrhea. |