

Knowledge Co-creation Program

Adaptation of Small-Scale Renewable Energy as a Step for Climate Change



CORRESPONDENCE

For enquiries and further information,
please contact the JICA office or the Embassy of Japan.

Further, address correspondence to:

JICA Hokkaido Center (Sapporo)

Address: Minami 4-25, Hondori 16-chome, Shiroishi-ku, Sapporo,
Hokkaido, 003-0026, Japan

TEL: 81-11-866-8393 FAX: 81-11-866-8382

("81" is the country code for Japan, and "11" is the local area code)

Valid for:

Fiscal Year 2019–2020



Knowledge Co-creation Program

Adaptation of Small-Scale Renewable Energy as a Step for Climate Change

Learn about our challenge for a sustainable future



地域の資源を賢く使う、
持続可能な未来を創る

Small, Smart and Sustainable

with the lush natural environment and pioneer spirit of Hokkaido.

For what?

This program aims to facilitate participants' learning and understanding about Japan's experiences regarding small-scale renewable energy and sustainable uses of regional resources. Participants are also expected to improve skills in developing plans for renewable energy to mitigate climate change in their countries.

Our focus is "small-scale" and "prior" implementations of renewable energy such as evaluation and sustainable management of regional resources, building consensus with local residents, contribution to boosting local economies and cooperation between central/local authorities and communities.

For whom?

Targeted countries

All countries

This program is carried out in English.

Job areas

Planning, policymaking and administration of following areas;

- Climate change
- Renewable energy
- Community development

Organizations

- Central and local governments
- Public/private sectors

Qualifications

- More than 3 years' work experience in related fields
- Competent English speakers
- Between 30 and 45 years old
- University graduate or equivalent

Where?

This course will be carried out in Japan's northern-most island of Hokkaido, which is blessed with a lush natural environment in which diverse natural resources are available to use as energy sources.

In addition, we have been promoting renewable energy in a unique way that maintains balance between reducing carbon emissions for climate change and tackling regional challenges such as depopulation and economic stagnation.

Introduction of a JICA Hokkaido

<https://youtu.be/ZTw5Dtcu8o4>



When?

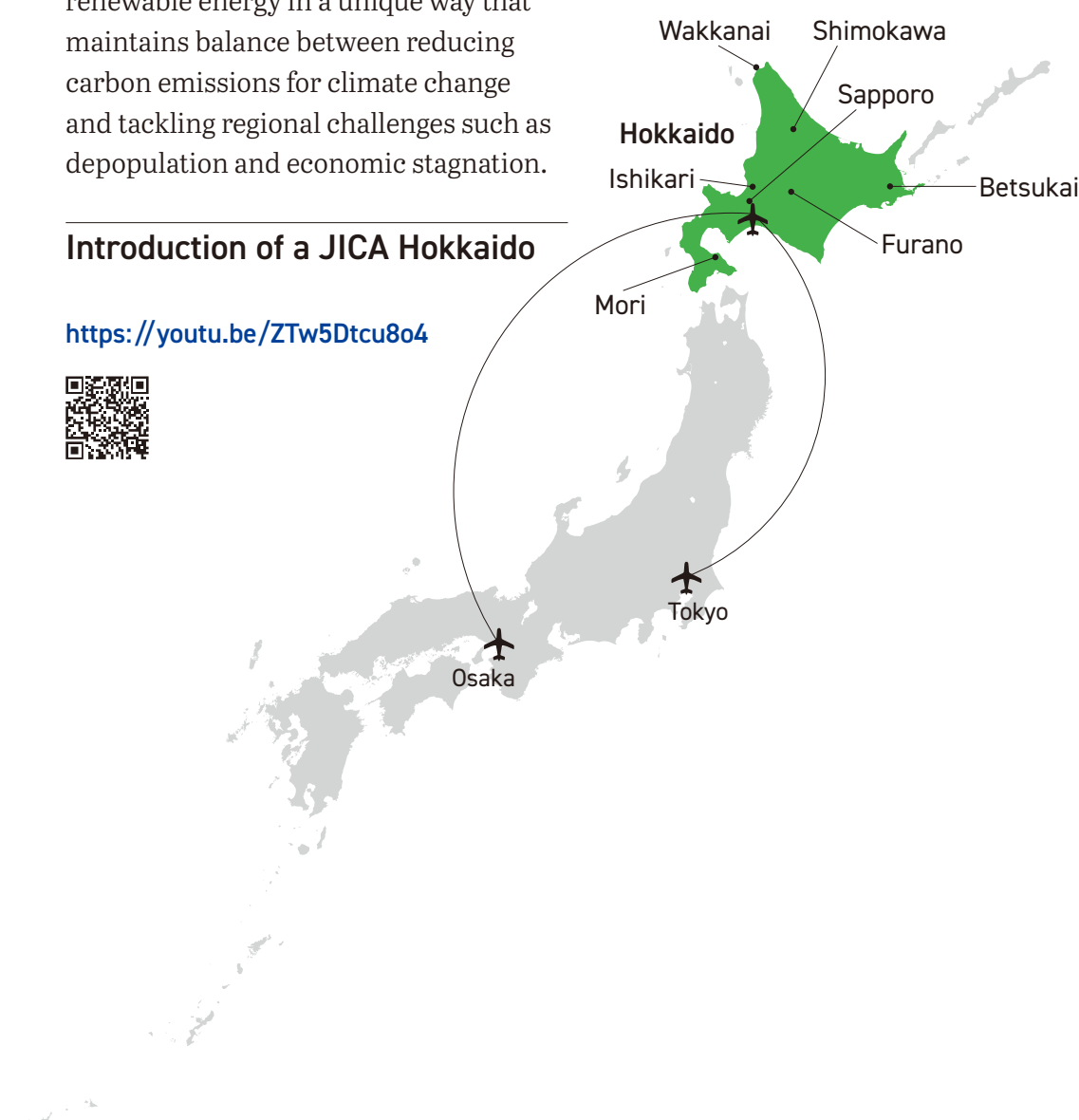
Valid for

Fiscal Years 2019–2020

Duration

Approximately 1 month

This program is held once a year from October to November. Please refer to the **General Information(GI)** for more details.



Why?

Combating climate change is now a common challenge all over the world. Renewable energy is a key solution to overcoming this challenge by cutting carbon emissions. It is also expected to be an effective response to increasing energy demand and improving access to electricity, which are urgent issues in many developing countries. Small-scale renewable energy could play a significant role that enhances these circumstances especially within communities.

How?

The course is carried out by JICA Hokkaido with a partner organization, Hokkaido Environment Foundation. Learning is enhanced by combining classroom teaching, study trips, discussions and workshops. Most lectures are delivered in Japanese, which are interpreted in English by a JICA training Coordinator.



AMPO Yoshihisa
(Hokkaido Environment Foundation)



SUGIOKA Rino
(JICA Hokkaido)



MAKI Kuniiko
(Coordinator)



MCCREARY Minori
(Program Assistant)

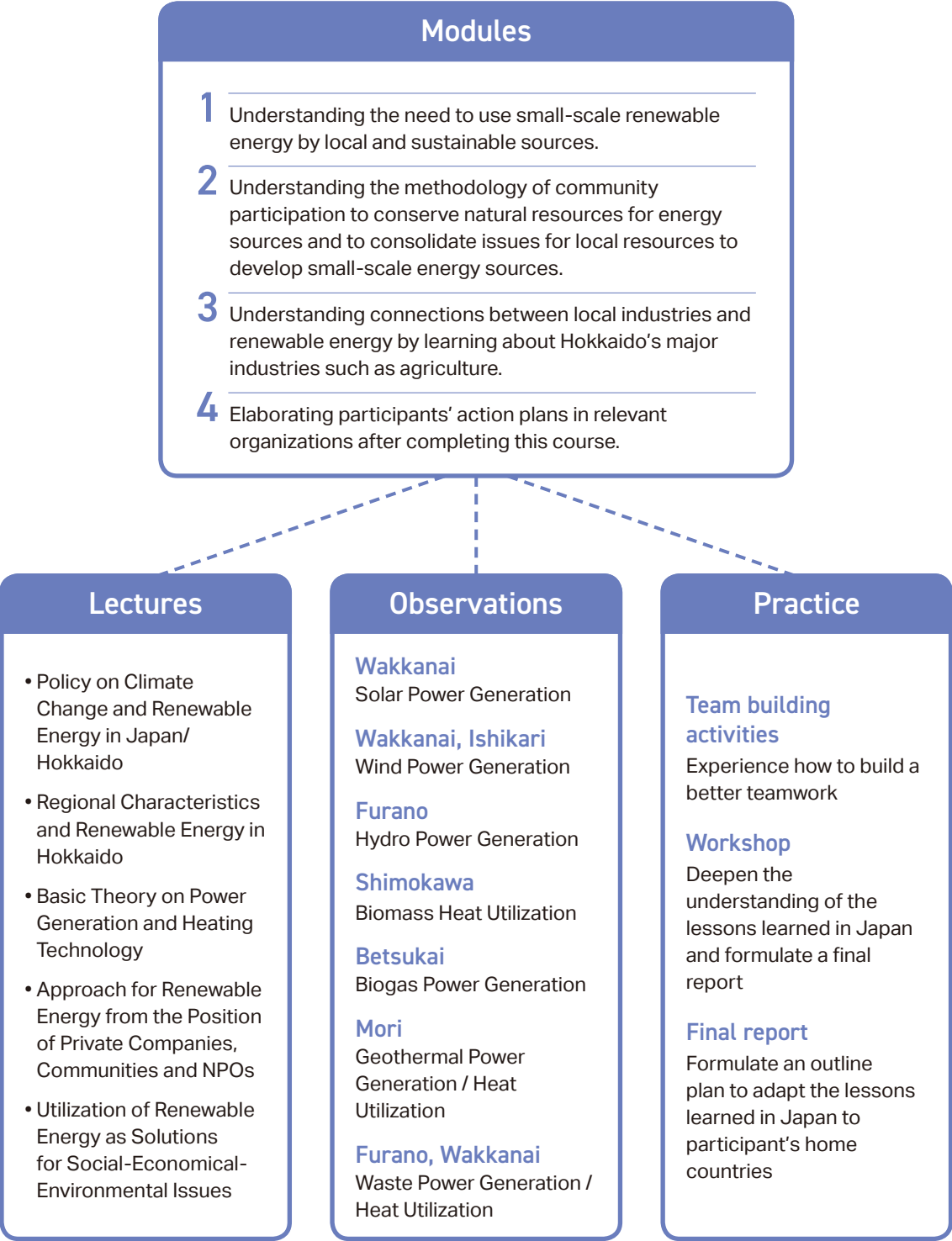
Certificate

Participants who have successfully completed the program will be awarded a certificate by JICA.

Contact details

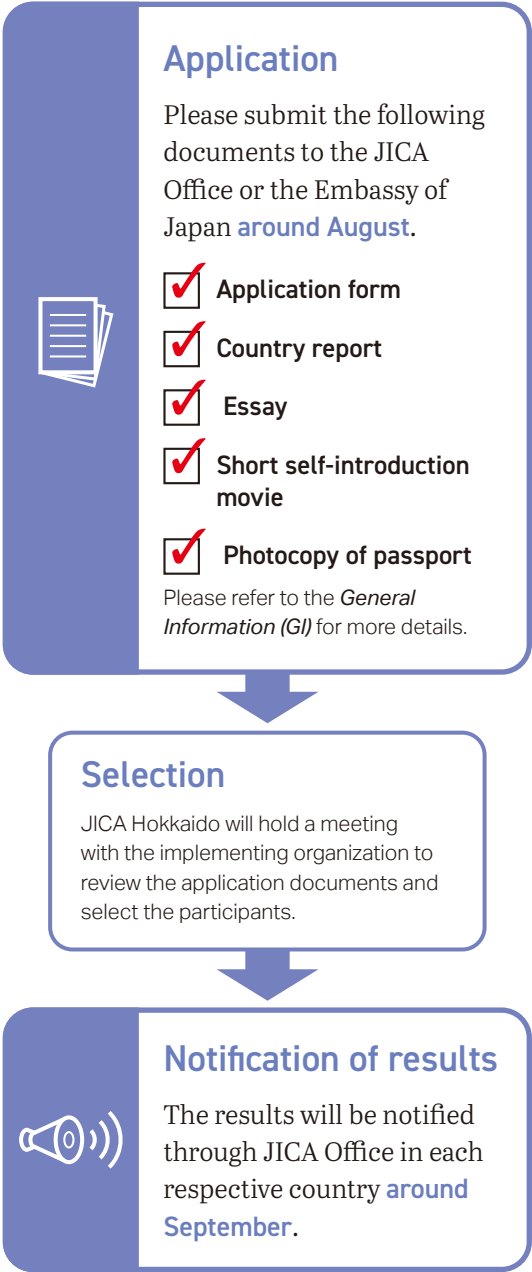
JICA Hokkaido > jicahkic@jica.go.jp

Program design



Steps to Japan

Expenses covered by JICA

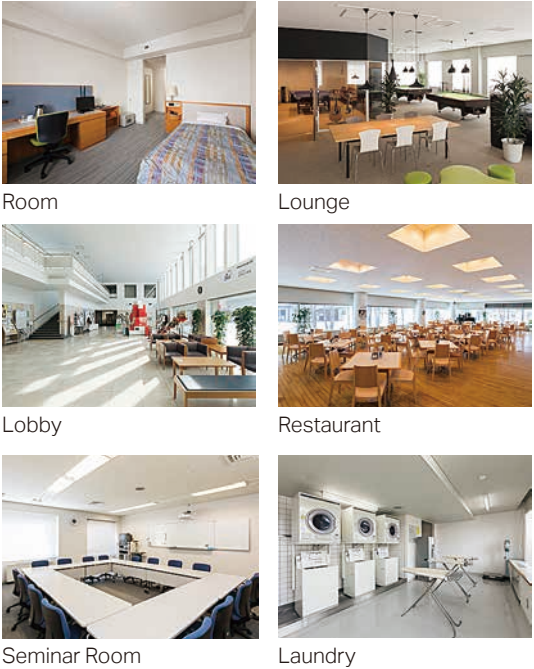


- ☒ **Air ticket**
Round-trip ticket between an international airport designated by JICA and Japan
- ☒ **Travel insurance**
From the arrival date in Japan to the departure date in Japan. As such, the travelling period outside Japan **will not be covered**.
- ☒ **Allowances for**
accommodation, living expenses, outfit and shipping
- ☒ **Expenses for**
 - Study tours and its related transportation and accommodation costs
 - Teaching materials
- ☒ **Medical care for**
participants who become ill after arriving in Japan. Costs related to pre-existing illnesses, pregnancy or dental treatment **are not covered**.

Stay in Japan

Accommodation

JICA Hokkaido Center (Sapporo) is equipped with accommodation facilities for JICA training participants. For study tours taking place far from the Center, JICA will arrange hotels for the participants.



JICA Hokkaido Center (Sapporo)
Address: Minami 4-25, Hondori 16-chome, Shiroishi-ku, Sapporo, Hokkaido, 003-0026, Japan
TEL: 81-11-866-8393 FAX: 81-11-866-8382
("81" is the country code for Japan, and "11" is the local area code)
Please visit the following link to gain more detailed information regarding the facilities of JICA Hokkaido Center (Sapporo).
<https://www.jica.go.jp/sapporo/english/office/about/facilities.html>



Climate

Hokkaido enjoys four distinctive seasons and you will need to prepare adequate clothing for the season in which you will participate in the program.

Spring	April, May Max temp 17.3°C Min temp 3.2°C
Summer	June, July, August Max temp 26.4°C Min temp 12.9°C
Fall	September, October, November Max temp 22.4°C Min temp 1.3°C
Winter	December, January, February, March Max temp 4.0°C Min temp -7.0°C

This program is carried out in fall. It is necessary to prepare adequate fall clothing, such as knitted sweaters, a coat, a hat, gloves and a scarf.

