



Knowledge Co-Creation Program (Group & Region Focus)

GENERAL INFORMATION ON

**Coastal and Marine Ecosystem Conservation through
Collaborative Management of Marine Protected Areas**
課題別研修「保護地域協働管理を通じた脆弱な沿岸・海洋生態系保全」
JFY 2019

NO. 201984829J002

Course period in Japan: From November 6 to December 7, 2019

This information pertains to one of the JICA Knowledge Co-Creation Program (Group & Region Focus) of the Japan International Cooperation Agency (JICA), which shall be implemented as part of the Official Development Assistance of the Government of Japan based on bilateral agreement between both Governments.

'JICA Knowledge Co-Creation Program (KCCP)' as a New Start

In the Development Cooperation Charter which was released from the Japanese Cabinet on February 2015, it is clearly pointed out that *"In its development cooperation, Japan has maintained the spirit of jointly creating things that suit partner countries while respecting ownership, intentions and intrinsic characteristics of the country concerned based on a field-oriented approach through dialogue and collaboration. It has also maintained the approach of building reciprocal relationships with developing countries in which both sides learn from each other and grow and develop together."* We believe that this 'Knowledge Co-Creation Program' will serve as a center of mutual learning process.

I. Concept

Background

Aichi Biodiversity Targets were adopted at the Tenth meeting of the Conference of the Parties to the Convention on Biological Diversity (COP10) held in Nagoya, Japan in October 2010. Target 11 aims to expand the Protected Area in the world, and it aims that at least 10 per cent of coastal and marine areas are conserved through effectively and equitably managed by 2020. Moreover, some Oceania countries and Guam has declared “The Micronesia Challenge” that aims similar but stricter target.

Loss of biodiversity has been especially large in marine and coastal ecosystems in Japan. Development Activities during the period of high economic growth in particular caused the massive shrinkage of natural coastline, mud flats, etc. Now, development pressures have been reduced, but there are still worries over lasting effects. There are also new concerns about invasion by alien species and the effects of climate change. On March, 2011, Japan's Ministry of the Environment (MOE) has formulated the Marine Biodiversity Conservation Strategy which shows the basic visions and the direction of measures aimed at conservation and sustainable use of marine biodiversity.

In developing countries, the destruction of ecosystem of coastal area and degradation of the living environment are serious problems in recent years caused by the influence of expansion of water and sea pollution, tourism development, an excess and an illegal fishing, a natural disaster, a climate change, etc. accompanying poverty and economic growth. Some of developing countries have worked on the conservation of coastal ecosystems through introduction of the environmental tax or participation of international initiative for coral reef conservation such as the International Coral Reef Initiative (ICRI). However, in many developing countries, the structure for reconciling the conservation of coastal ecosystem with sustainable local development is not improved. From now on, also in order to contribute to the achievement of the Aichi target, it is necessary to expand the cooperation in coastal ecosystem conservation of developing countries.

By providing knowledge and sharing experiences about the coastal ecosystem conservation in Japan and developing countries, as well as sharing information about current situations, this program aims to contribute to improvement of coastal environment in developing countries through effective management and sustainable use of natural resources.

For what?

The Program aims to develop human resources for the sustainability of coastal ecosystems.

For whom?

The Program is offered to the persons who are involved in management or conservation of coastal and marine ecosystems in governmental organization.

How?

The Program consists of lectures, practices, observations from various viewpoints necessary for coastal ecosystem management.

II. Description

1. **Title (Course No.):**
Coastal and Marine Ecosystem Conservation through Collaborative Management of Marine Protected Areas (201984829J002)
2. **Course Period**
in Japan: From November 6 to December 7, 2019
3. **Target Regions or Countries:**
Albania, Brazil, Fiji, Palau, Phillipines, Micronesia
4. **Eligible / Target Organization**
This program is designed for central/local ministries or relevant agencies having jurisdiction over national parks/protected areas or marine/coastal zone
5. **Course Capacity (Upper Limit of participants)**
6 participants
6. **Language to be used in this program:**
English
7. **Course Objective:**
To understand nature park management and the Satoyama/Satoumi concept from Japan. To deepen understanding of effective protected area management and the sustainable use of natural resources with the participation of local people and the private-sector. To develop an action plan related to effective protected area management within the participating countries.
8. **Overall Goal**
New protected areas are established. Otherwise management of existing protected areas are improved.
9. **Expected Module Output and Contents:**
This program consists of the following components. Details on each component are given below:

Modules	Examples of Subjects/Agendas
1) Characteristics of protected area management in Japan (zoning-based/council-type management) as well as priority issues on protection, utilization and administrative management of natural environments within protected areas of the participating countries can be explained;	Formulation/submission of Country report, PAN (Protected Area Network) concept, Grand design by the central government, Grand design by the local government, How to identify the target unit for Grand design,

<p>2) Protection and management of marine life in coastal and marine protected areas and measures against alien species are understood, and priority issues in participating countries and the measures against them can be explained;</p>	<p>Reduction of land load (Conservation of water system), Sustainable use of Fishery Resources / SATOUMI, Revival of traditional fishing method, Rehabilitation of coral reefs as coral ecosystem conservation, Measures against illegal activities or alien species related to protected areas,</p>
<p>3) Ideas for promoting the concept of Satoyama/Satoumi within participating countries can be explained as a means of buffer zone management;</p>	<p>Utilization of GIS for Grand design, Assessment of effectiveness of conservation activities, Development of technique for seedling production of coral, Designing appropriate monitoring and database,</p>
<p>4) Requirements for CEPA activities and sustainable tourism in coastal and marine protected areas are understood, and work plans for the participating countries can be prepared;</p>	<p>Use of aquarium, Self-management of eco-tourism, Research and public awareness, Local community involvement, Lectures on economic values of ecosystem services including disaster prevention functions, Financial mechanisms, Linkages with related sectors and resource uses</p>
<p>5) Priority action plans can be prepared to promote the sustainable conservation, utilization and management of coastal/marine ecosystems and biodiversity within the participating countries.</p>	<p>Project Cycle Management (PCM), Making action plans</p>

(Subject to minor changes)

<Structure of the program>

Topic outline (subject to minor changes)

<In Japan>

Orientations (7-8 Nov)

- (1) Briefing (orientations necessary for life in Japan)
- (2) General Orientations (Outline of general information on Japan)

1st to 3rd week (11 Nov– 29 Nov)

- (1) Country study
- (2) Action by theme
- (3) Other lectures/observations

4th week (2-6 Dec)

- (1) Effective management practices
- (2) Brushing up action plans

III. Conditions and Procedures for Application

1. Expectations for the Participating Organizations:

- (1) This program is designed primarily for organizations that intend to address specific issues or problems identified in their operation. Participating organizations are expected to use the project for those specific purposes.
- (2) This program is enriched with contents and facilitation schemes specially developed in collaboration with relevant prominent organizations in Japan. These special features enable the project to meet specific requirements of applying organizations and effectively facilitate them toward solutions for the issues and problems.

2. Nominee Qualifications:

Applying Organizations are expected to select nominees who meet the following qualifications.

(1) Essential Qualifications

- 1) Current duties: working for central/local ministries or relevant agencies having jurisdiction over coastal/marine protected areas, and being involved in management or conservation in their duties.
- 2) Experience in the relevant field: have more than two (2) years of experience in the above mentioned field.
- 3) Educational Background: be university graduates or equivalent.
- 4) Language: have a good command of English enough to give an oral presentation, listening to the lectures and write a report in English.
- 5) Health: must be in good health, both physically and mentally, to participate in the Program in Japan. Pregnant applicants are not recommended to apply due to the potential risk of health and life issues of mother and fetus.

3. Required Documents for Application

(1) Application Form: The Application Form is available at **the JICA office (or the Embassy of Japan)**.

(2) Photocopy of passport: to be submitted with the application form, if you possess your passport which you will carry when entering Japan for this program. If not, you are requested to submit its photocopy as soon as you obtain it.

*Photocopy should include the followings:

Name, Date of birth, Nationality, Sex, Passport number and Expire date.

(3) Nominee's English Score Sheet: to be submitted with the application form. If you have any official documentation of English ability. (e.g., TOEFL, TOEIC, IELTS)

(4) Country and Job Report: to be submitted with the application form. Fill in Annex of this General Information, and submit it along with the application form.

4. Procedure for Application and Selection: (submission/selection dates for this course has been changed)

(1) Submission of the Application Documents:

Closing date for applications: **Please inquire to the JICA office (or the Embassy of Japan).**

(After receiving applications, the JICA office (or the Embassy of Japan) will send them to the JICA Center in JAPAN by **September 18, 2019.**

(2) Selection:

After receiving the documents through proper channels from your government, the JICA office (or the embassy of Japan) will conduct screenings, and then forward the documents to the JICA Center in Japan. Selection will be made by the JICA Center in consultation with concerned organizations in Japan. *The applying organization with the best intention to utilize the opportunity of this program will be highly valued in the selection.* Qualifications of applicants who belong to the military or other military-related organizations and/or who are enlisted in the military will be examined by the Government of Japan on a case-by-case basis, consistent with the Development Cooperation Charter of Japan, taking into consideration their duties, positions in the organization, and other relevant information in a comprehensive manner.

(3) Notice of Acceptance

Notification of results shall be made by the respective country's JICA office (or Embassy of Japan) to the respective Government by **not later than October 7, 2019.**

5. Conditions for Attendance:

- (1) to strictly adhere to the program schedule.
- (2) not to change the program topics.
- (3) not to extend the period of stay in Japan.
- (4) not to be accompanied by family members during the program.
- (5) to return to home countries at the end of the program in accordance with the travel schedule designated by JICA.
- (6) to refrain from engaging in any political activities, or any form of employment for profit or gain.
- (7) to observe Japanese laws and ordinances. If there is any violation of said laws and ordinances, participants may be required to return part or all of the training expenditure depending on the severity of said violation.
- (8) to observe the rules and regulations of the accommodation and not to change the accommodation designated by JICA.

IV. Administrative Arrangements

1. Organizer:

(1) Course Period in Japan

- 1) **Name:** JICA Okinawa
- 2) **Contact:** Ms. Nao KAMEYA, Training Program Division, JICA Okinawa:
oicctp@jica.go.jp

2. Implementing Partner: Japan Wildlife Research Center

3. Travel to Japan:

- (1) **Air Ticket:** The cost of a round-trip ticket between an international airport designated by JICA and Japan will be borne by JICA.
- (2) **Travel Insurance:** Coverage is from time of arrival up to departure in Japan. Thus traveling time outside Japan will not be covered.

4. Accommodation in Japan:

JICA will arrange the following accommodations for the participants in Japan:

JICA Okinawa International Center (JICA OKINAWA)
Address: 1143-1, Aza-Maeda, Urasoe-shi, Okinawa-ken 901-2552, JAPAN
TEL: +81-98-876-6000, Fax: +81-98-876-6014
(where “81” is the country code for Japan, and “98” is the local area code)

If there is no vacancy at JICA OKINAWA, JICA will arrange alternative accommodations for the participants.

To know the JICA Okinawa's surroundings, please refer to the site of “**Kenshuin-Map**” at its URL, <http://jica-net.jica.go.jp/dspace/handle/10410/727>.

Then please click " Kenshuin_map_big.aspx " in the web page.

“**Kenshuin-Map**” was made by ex-participants of one of the JICA's multimedia training courses, “Digital Video Production for Dissemination and Enlightenment in JFY 2009”, as an assignment of final workshop. This content introduces how to get to places for shopping, dining and exchanging foreign currencies, around JICA Okinawa International Center.

5. Expenses:

The following expenses will be provided for the participants by JICA:

- (1) Allowances for accommodation, living expenses, outfit, and shipping
 - (2) Expenses for study tours (basically in the form of train tickets).
 - (3) Free medical care for participants who become ill after arriving in Japan (costs related to pre-existing illness, pregnancy, or dental treatment are not included)
 - (4) Expenses for program implementation, including materials
- For more details, please see “III. ALLOWANCES” of the brochure for participants titled “KENSHU-IN GUIDE BOOK,” which will be given before departure for Japan.

6. Pre-departure Orientation:

A pre-departure orientation will be held at the respective country's JICA office (or Japanese Embassy), to provide participants with details on travel to Japan, conditions of the workshop, and other matters.

V. Other Information

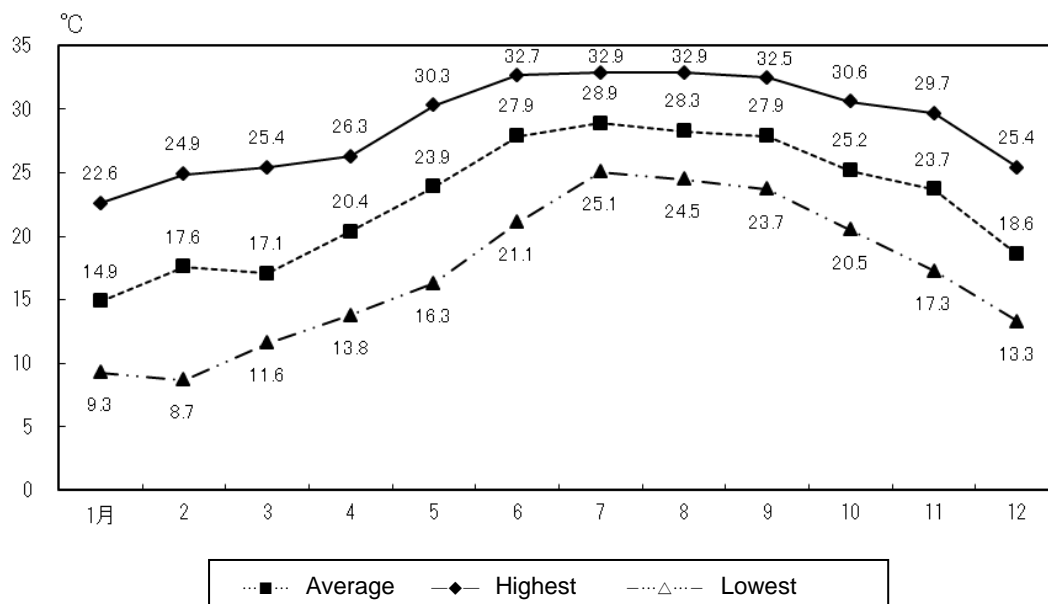
【Course Period in Japan】

1. Climate in Okinawa

Okinawa is located at sub-tropical zone (southern edge of Japan) but climate varies depending upon seasons. While it is hot and heavily humid in the summer season (June to October), it becomes a bit chilly in the winter season (December to March) due to strong northerly wind. Participants are recommended to bring suitable clothing (details are mentioned in below4.)

The following diagram is the flow of temperature in Urasoe city where JICA Okinawa International Center (OIC) is located (Data source: homepage of Urasoe City).

The flow of temperature in Urasoe city



2. Main facilities in JICA Okinawa

OIC is equipped with a variety of facilities for training and welfare activities such as seminar rooms, library, study room with computers, accommodation rooms (details are mentioned in below 3.), dining hall, clinic for medical consultation, gym, tennis court, a swimming pool (available from May to October), Japanese-style room for tea ceremony and recreation rooms.

At OIC dining hall, "HALAL" meals for the Muslim and vegetarian meals are available. Internet connection available (either by cable or WiFi) at accommodation rooms and other buildings.

3. Accommodation in JICA Okinawa

OIC accommodation building has 96 single rooms. Every room is furnished with bed, desk, chair, bookshelf and closet. Also, there are TV (with satellite channel), DVD player, safety box, telephone, LAN cable jack, etc. in each room.

OIC accommodation building has tea lounge, smoking room and laundry room on each floor. And also washing machines and irons are available for free. Towels and toiletries are provided upon check-in. Please note that cooking at OIC accommodation is strictly prohibited

4. What to bring

(1) Clothing

It is recommended to bring appropriate clothing according to the season during Participants stay in Okinawa(*refer 1. Climate of Okinawa). If your training program includes plant visit or outdoor activities, suitable uniform/clothing will be provided by JICA or at visiting site upon arrival. Also, JICA Okinawa accommodation front desk has jackets and coats for rental in case of study tour to mainland Japan during winter time.

(2) National Costume

There are a few occasions like opening and closing ceremonies when training participants are kindly requested to wear formal clothing. Nevertheless, casual clothing is acceptable even during training hours of most of the training program.

It is strongly recommended to bring your national or traditional costumes for opening & closing ceremony and for other activities that participants may have opportunities to join.

(3) Photos and Movies

During your stay in Okinawa, JICA Okinawa and/or the local media (TV, newspapers, etc.) may interview you. Please bring photos and videos of your country, your daily life, your office, etc. Please note that photos and videos must be copyright cleared or taken by yourself.

(4) Authentic Recipes

We are very glad if you provide OIC restaurant authentic recipes of your hometown foods to let them provide various taste to relief as many participants as possible.

(5) Personal Computer

During your training, you will produce documents and power point presentation of your own action plan. Please bring your personal computer for preparing those products. As you will also have an exercise on GIS software with your computer.

5. Environmental conservation activities in JICA OIC

JICA OIC emphasizes on the environmental conservation activities such as energy saving, rubbish separation and recycling etc. Participants are kindly requested to cooperate to these activities during their stay at JICA OIC. Details will be given on arrival to JICA OIC.

6. Activities out of training program

JICA Okinawa offers a various kinds of welfare activities for the participants such as sports program, exposition of Japanese/Okinawa traditional cultures and Japanese language/conversation classes etc. Training participants can try any of them whenever sheets are available.

7. For your Information

Information of Okinawa is available at following URLs.

- 1) Homepage of Urasoe city (where JICA OIC is located)

Urasoecity:

<http://honyaku.j-server.com/LUCURASOEC/ns/tl.cgi/http%3a//www.city.urasoe.lg.jp/?SLANG=ja&TLANG=en&XMODE=0&XCHARSET=UTF-8&XJSID=0>

Basic information of Urasoe city is covered in English.

- 2) HP of Okinawa Prefecture: <http://www.pref.okinawa.jp/english/index.html>

Basic information of Okinawa prefecture is covered (Urasoe city is one of the municipalities of Okinawa prefecture) in English.

- 3) HP of Okinawa Convention & Visitors Bureau: <http://en.okinawastory.jp/>

- 4) The YouTube channel of JICA Okinawa :

<https://www.youtube.com/user/jicaokinawa>

- 5) The Facebook page of JICA Okinawa :

<https://www.facebook.com/jicaokinawaaic/>

More information is available at the reception of JICA OIC.

VI. ANNEX: COUNTRY AND JOB REPORT

Name: _____

Country: _____

【Purpose for formulating Country and Job Report】

Following is the forms of Country & Job Report. Nominees are kindly requested to formulate a Report based on it. Electric forms of the Report are available at JICA office or the Embassy of Japan in your country. However, the report can be based on other forms if all the answers to the questions of this form are covered.

Participants are kindly requested to bring materials with them such as photographs, booklets / brochures, guide books etc. of the following topics for Country & Job Report / action plan presentation. (electronic data are recommended)

- Governmental organization chart
- Plan or related papers, policies, regulations, ordinances, etc
- Authorized system related to this sector
- Information and statistics related
- General information related
- Information of related organization (Ministries, local government NGOs, etc)

1. Basic information of the participant

1-1. Full Name	[Family]	[First]	[Middle]
1-2. Country			
1-3. Education & Job record (Please state the university or college and department which you have graduated, as well as organizations you have worked for before present organization)	Period	University & Degree / Organization & Job Title	
	--		
	--		
	--		

2. Country description (Please describe based on the latest sources)

2-1. General Statistics on your country

(Ex.)

- Area, population, GDP/person
- The number of people engaging in coastal ecosystems conservation
- Number of major protected areas and their characteristics etc.

2-2. Outlines of the present situation in your country

(Ex.)

- Ministries or agencies concerned
- Situation of relevant industries (Tourism etc.)
- Policies concerned etc.

2-3. Major problems and caused consequences that your country currently faces

3. Job description (Please describe as clearly and minutely as possible)

3-1. Description of your organization

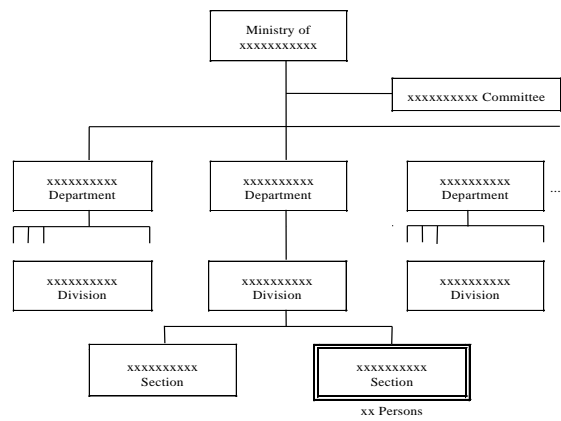
(1) Roles and responsibilities of your organization

(2) Organization Chart

Referring to the example, draw the chart of your organization and indicate your department / division/section with double line.

(If it is difficult to incorporate into this form, you can attach Organization Chart separately.)

〈Organization Chart Example〉



(3) Problems and caused consequences that your organization currently faces

(4) Description of related authorities with your organization (rolls, responsibilities and demarcations)

--

3-2. Description of your job in your organization
--

3-2-1. Present Job

(1) Position	
(2) Main actual activities and their objectives	
(3) Related persons or organizations in activities (2)	
(4) Constraint / disincentive in performing of your job	
(5) Countermeasures taken (or, will be taken) against constraint / disincentive in (4)	
(6) Results (or expected effects) emerged through countermeasures in (5)	

3-2-2. Previous Job

(Please describe your previous related job if any. If you have never changed, or your previous job was not related at all, you can skip these items.)

(1) Position	
(2) Main actual activities and their objectives	
(3) Related person or organization in activities (2)	
(4) Constraint / disincentive in performing of your job	
(5) Countermeasures taken (or, will be taken) against constraint / disincentive in (4)	
(6) Results (or expected effects) emerged through countermeasures in (5)	

For Your Reference

JICA and Capacity Development

The key concept underpinning JICA operations since its establishment in 1974 has been the conviction that “capacity development” is central to the socioeconomic development of any country, regardless of the specific operational scheme one may be undertaking, i.e. expert assignments, development projects, development study projects, training programs, JOCV programs, etc.

Within this wide range of programs, Training Programs have long occupied an important place in JICA operations. Conducted in Japan, they provide partner countries with opportunities to acquire practical knowledge accumulated in Japanese society. Participants dispatched by partner countries might find useful knowledge and re-create their own knowledge for enhancement of their own capacity or that of the organization and society to which they belong.

Pre-organized programs cover a wide range of professional fields, ranging from education, health, infrastructure, energy, trade and finance, to agriculture, rural development, gender mainstreaming, and environmental protection. A variety of programs are being customized to address the specific needs of different target organizations, such as policy-making organizations, service provision organizations, as well as research and academic institutions. Some programs are organized to target a certain group of countries with similar developmental challenges.

Japanese Development Experience

Japan was the first non-Western country to successfully modernize its society and industrialize its economy. At the core of this process, which started more than 140 years ago, was the “*adopt and adapt*” concept by which a wide range of appropriate skills and knowledge have been imported from developed countries; these skills and knowledge have been adapted and/or improved using local skills, knowledge and initiatives. They finally became internalized in Japanese society to suit its local needs and conditions.

From engineering technology to production management methods, most of the know-how that has enabled Japan to become what it is today has emanated from this “*adoption and adaptation*” process, which, of course, has been accompanied by countless failures and errors behind the success stories. We presume that such experiences, both successful and unsuccessful, will be useful to our partners who are trying to address the challenges currently faced by developing countries.

However, it is rather challenging to share with our partners this whole body of Japan’s developmental experience. This difficulty has to do, in part, with the challenge of explaining a body of “tacit knowledge,” a type of knowledge that cannot fully be expressed in words or numbers. Adding to this difficulty are the social and cultural systems of Japan that vastly differ from those of other Western industrialized countries, and hence still remain unfamiliar to many partner countries. Simply stated, coming to Japan might be one way of overcoming such a cultural gap.

JICA, therefore, would like to invite as many leaders of partner countries as possible to come and visit us, to mingle with the Japanese people, and witness the advantages as well as the disadvantages of Japanese systems, so that integration of their findings might help them reach their developmental objectives.



CORRESPONDENCE

For enquiries and further information, please contact the JICA office or the Embassy of Japan. Further, address correspondence to:

JICA Okinawa International Center (JICA OKINAWA)

Address : 1143-1, Aza-Maeda, Urasoe-shi, Okinawa-ken 901-2552, JAPAN

Tel: +81-98-876-6000, Fax: +81-98-876-6014