



Online Self-study and Face-to-face (in Japan)

Knowledge Co-Creation Program (Group and Region Focus)

Disaster Risk Reduction and Management on Infrastructure (River, Road, and Port) (A)



Course Number: 202208485J001

Course Period: June 15- August 10, 2023



NOTE: Adobe Acrobat Reader DC and Google Chrome are recommended as PDF viewer. JAWS and NVDA are recommended as screen reader.

NOTE: If there are any difficulties in reading this document, please contact JICA Office in your country or JICA Center in Japan.

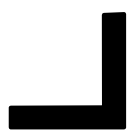
NOTE: Depending on the circumstances, some or all of the program periods may be changed or cancelled after the application has been accepted.

課題別研修 インフラ施設（河川・道路・港湾）災害対策とマネジメント(A)



How can we make
Disaster Risk Reduction
through our engineering
countermeasures?

Acquire knowledge of the various efforts such as the way to reduce the damage on important public infrastructures from natural disasters and disaster recovery based on the Japan's experiences.



Outline



This program is designed for civil engineers who are in charge of the maintenance and management of the public engineering facilities.



The program aims to share the various efforts such as the way to reduce the various disaster risks on important public infrastructures from natural disasters (flood, earthquake, tsunami, and sediment related disasters) and disaster recovery based on the Japan's experiences, leading to the improved disaster risk reduction, prevention, mitigation and restoration for infrastructure in participating organizations.



The sessions will be held online self-study in your country and face-to-face study in Japan.



All sessions are carried out in English.

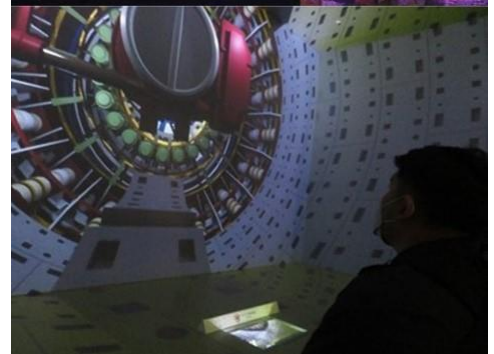
The period of the program is from June 15 to August 10, 2023

Course Capacity:

7 participants from 6 countries

<Important Note>

Please note that the duration of the course may be changed or the course itself may be cancelled depending on the infection status of COVID-19.



JICA Knowledge Co-Creation Program (KCCP)

The Japanese Cabinet released the Development Cooperation Charter in February 2015, which stated “In its development cooperation, Japan has maintained the spirit of jointly creating things that suit partner countries while respecting ownership, intentions and intrinsic characteristics of the country concerned based on a field-oriented approach through dialogue and collaboration. It has also maintained the approach of building reciprocal relationships with developing countries in which both sides learn from each other and grow and develop together.” JICA believes that this ‘Knowledge Co- Creation Program’ will serve as a foundation of mutual learning process.

Table of Contents

For What?

(Background, Overall Goal, Course Objective) 6

To Whom?

(Job Areas and Organizations, Targeted Countries) 7

When?

(Online Self-study Program Period, Face-to-Face Program Period) 7

Where?

(Place Where the Program Take Place) 7

How?

(How to Learn, Language, Commitment to the SDGs) 8

Program Structure 9-12

Voice

(Past Program Alumni Comments) 13

Eligibility and Procedures

(Expectations to the Applying Organizations, Nominee Qualifications) 14-16

(Required Documents for Application) 16

(Procedures for Application and Selection) 16-17

(Additional Documents to be Submitted by Accepted Participants) 17

(Conditions for Participation) 17-18

Administrative Arrangements

(Organizer (JICA Center in Japan), Implementing Partner, Travel to Japan,
Accommodation in Japan, Expenses, Pre-departure Orientation, Other Information) 19-21

Annex1

(Basic Information Matrix, Job Report) 22-26

Annex2

(Schedule in FY2022) 27-28

For Your Reference

(JICA and Capacity Development, Japanese Development Experience) 29

For What?

Background

In recent years, natural disasters which could shake the foundations of regions and nations are occurring more frequently and intensely all over the world. As a result, economic damage and loss are expanding. In developing countries, natural disasters such as flood, earthquake, tsunami, sediment related disasters have caused serious damages to public infrastructure (road, river, port, water supply and sewerage system, electric power supply, etc.) and recovering such public infrastructure requires a great deal of reinvestment and time. In this way, it repeatedly impedes social and economic development.

Overall Goal

Disaster risk prevention, mitigation, preparedness, and rehabilitation for infrastructure (river, road, and port) will be improved in participating organizations.

Course Objective

Participants will acquire knowledge on applicable techniques for more practical, efficient and effective disaster risk prevention, mitigation, preparedness and rehabilitation for infrastructure (river, road and port).

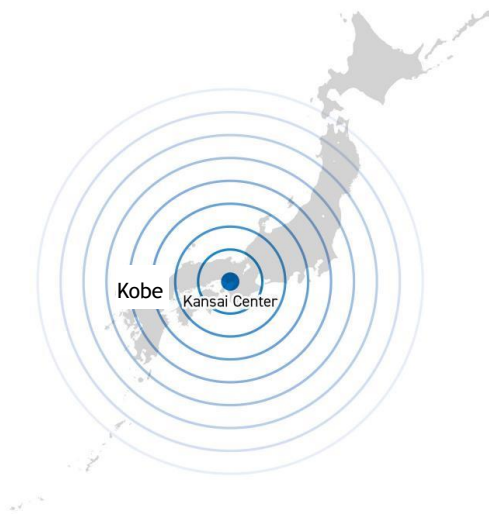
To Whom?

Job Areas and Organizations

This program is offered to civil engineers who are involved in infrastructure management (river, road and port, but not for building and housing) from the viewpoint of investigation, planning, implementation or maintenance.

Targeted Countries

Brazil, Philippines, Samoa, Seychelles, Sri Lanka, Timor-Leste



JICA Knowledge Co-Creation Program (Group and Region Focus)
Disaster Risk Reduction and Management on Infrastructure (River, Road and Port) (A)
Course No. 202208485J001

When?

Online Self-study Program Period

(at your home/ office in your country)



From June 15, 2023

to June 21, 2023

You will receive links of video materials

Face-to-face Program Period

(In Kobe, Japan)

From June 22, 2023

to August 10, 2023

Where?

This course is carried out mainly at JICA Kansai Center.

Program Period	Where
Online self-study	In your country
Face-to-face	At Kobe in Japan

Note:

- ✧ Arrival at Kansai(Kobe) on June 22
- ✧ Departure from Japan on August 10, 2023

How?

How to Learn

- Online Self-Study
- Q&A Session
- Lectures
- Field Visits
- Workshops
- Discussions
- Presentations



Watch



Listen



Experience



Study



Chat



Discuss



Present

Language

English

Commitment to the SDGs



Program Structure

This program consists of the following components. Details on each component are given below:

(1) Preliminary Phase (Encouraging Program)

Online Self-study program period in your home country

From June 15, 2023 to June 21, 2023

Participants are required to do following things before coming to Japan in your home country:

- Preparation and submission of Job Report and Basic Information Matrix (BIM) (As for the details, please see the ANNEX1)
- View videos through internet (ex. Natural Disasters in Japan, Disaster Prevention facilities in Japan and etc.) to gain more knowledge and motivation to participate in the program before coming to Japan.

(2) Core Phase in Japan

Face-to-face Program Period

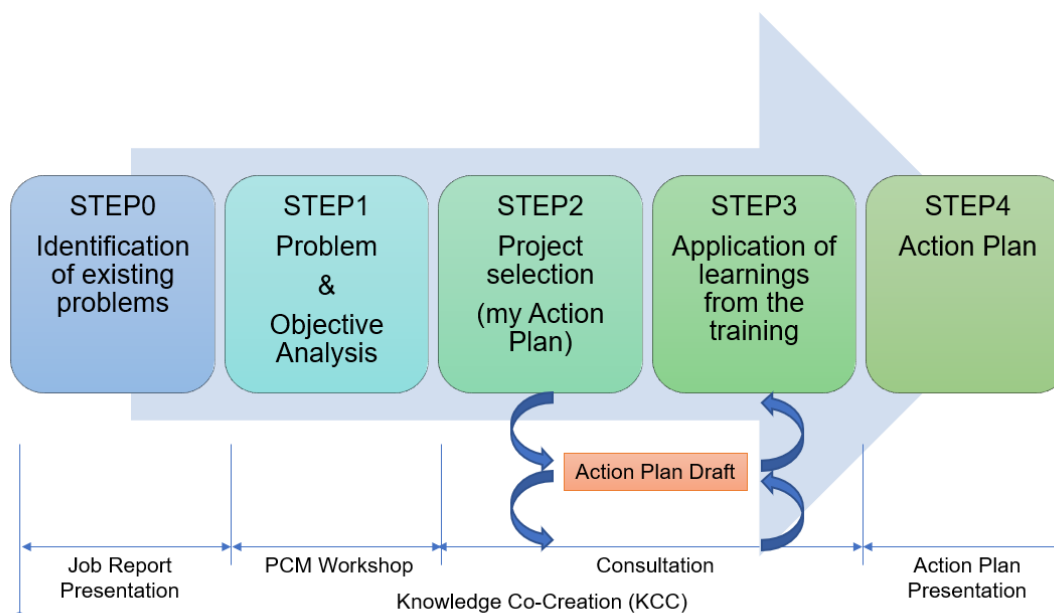
From June 22, 2023 to August 10, 2023

Expected Module Output	Subjects/Agendas	Methodology
<1> To be able to explain the similarities and differences of the feature of natural disasters between the participating countries and Japan.	(1) Job report presentation (2) Natural disasters in Japan (3) Natural disasters and its analysis in each country (4) Transition of disaster risk reduction technologies in Japan	Lecture Presentation Field visit

<p><2></p> <p>To be able to explain the national, prefectural and municipal governmental policies, plans and measures on Disaster Risk Reduction (DRR) in Japan.</p>	<p>(1) Disaster management policies/plans/measures at different levels</p> <p>(2) Disaster management project</p> <p>(3) Ports and Harbors in Japan</p>	<p>Lecture</p> <p>Field visit</p> <ul style="list-style-type: none"> Key Wide-Area Disaster Management Base, etc.
<p><3></p> <p>To be able to explain structural measures such as the engineering techniques for disaster risk prevention, mitigation, preparedness, and rehabilitation for infrastructures against various natural disasters in Japan.</p>	<p>(1) Countermeasures for Sediment Disasters</p> <p>(2) River Improvement Project</p> <p>(3) Landslide Countermeasures Project</p> <p>(4) Road Project (Road · Bridge)</p> <p>(5) Disaster Restoration Project</p> <p>(6) Engineering techniques for emergency restoration / reconstruction methods</p>	<p>Lecture</p> <p>Field visit</p> <ul style="list-style-type: none"> River Office Sabo Office Tide Gates Tsunami Evacuation Tower, etc.
<p><4></p> <p>To be able to explain non-structural measures on Disaster Risk Reduction (DRR) such as weather forecast, early warning system, information sharing system, etc.</p>	<p>(1) Response to disasters by Meteorological Observatory (weather forecast/earthquake)</p> <p>(2) Flood forecasting system and its operation</p> <p>(3) Earthquake Disaster Prevention, Mitigation and Restoration System for Lifeline</p> <p>(4) Creation of Disaster Reduction Awareness</p>	<p>Lecture</p> <p>Workshop</p> <p>Field visit</p> <ul style="list-style-type: none"> Town watching and Hazard Map developing Public Works Research Institute Disaster Reduction and Human Renovation Institution

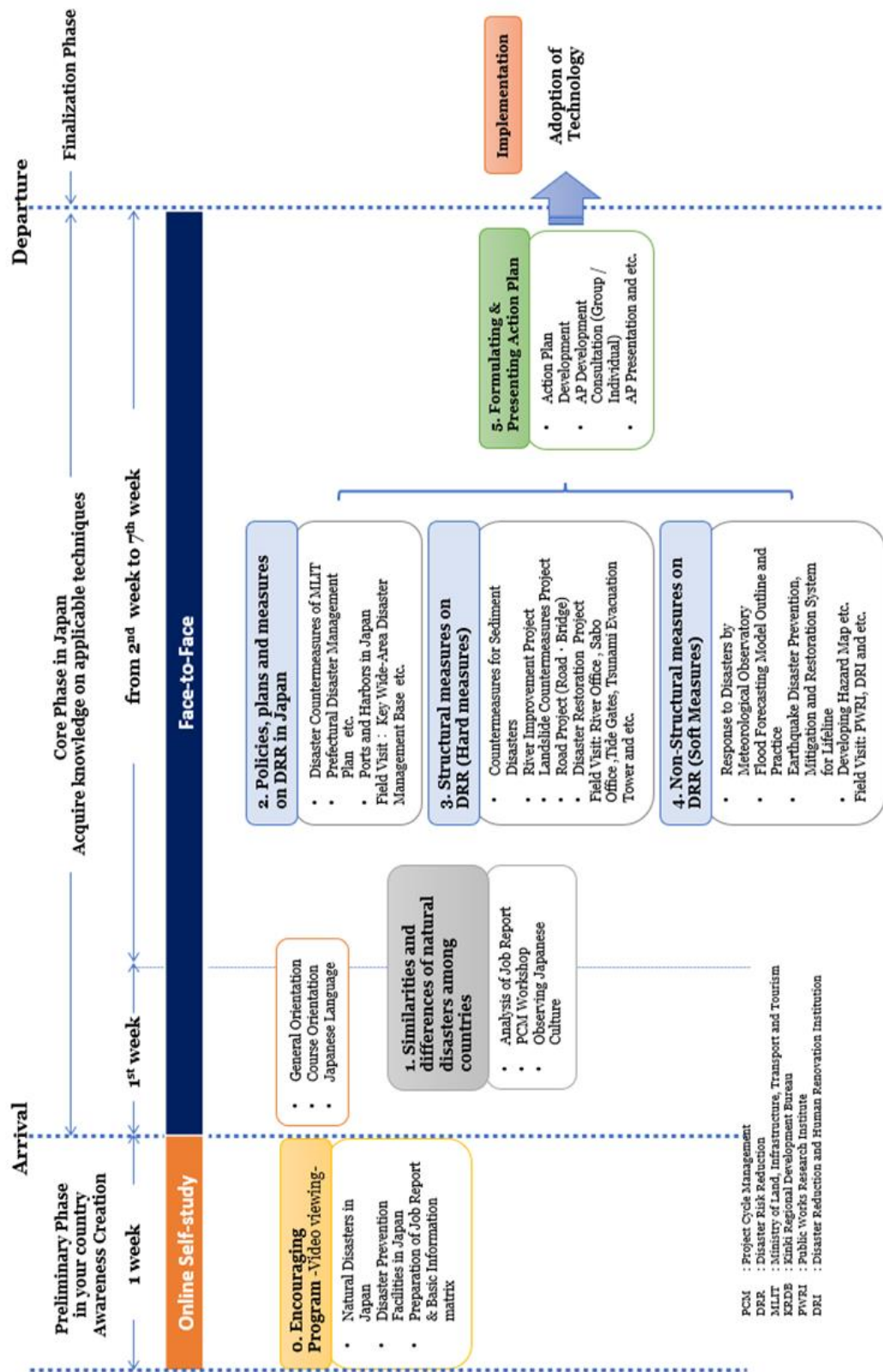
<5> To prepare an Action Plan and propose applicable techniques / knowledge to participating organizations.	(1) Problem analysis, solution finding (2) Preparation of Action Plan* (3) Presentation of Action plan	Workshop Consultation Presentation
(3) Finalization Phase in a participant's home country (from August 10, 2023).		
Expected Module Output	Activities	
To implement the Action Plan	Dissemination, finalization and implementation of the Action Plan in the participant's country	

*Action Plan Preparation Steps are as follows;



Program Structure

FY2023



Voice

Past Program Alumni Comments



Mustaqim

Indonesia

All the subjects and contents are useful because I work as a planner that need to know almost all aspect in infrastructure but the knowledge about infrastructure responsibility, lesson learned from city in Japan, drainage system, budget allocation, life-line system give me broader point of view on determining the problems and solutions.



Geoffrey Mark Anthony VAUGHN

Guyana

I am amazed by the work done by Japan in dealing with disaster, after the impact from the many earthquakes and tsunami which have devastated their country. These disasters did not defeat the Japanese people. It has only made them stronger and enabled them to become more creative and innovative in dealing with disaster.

I am indeed amazed by the many hard and soft structures that have been created by the people of Japan. This is a living example of what love for a country is. The Japanese people are true example of what working together can achieve.



Eligibility and Procedures

1. Expectations to the Applying Organizations

- (1) This course is designed primarily for organizations that intend to address specific issues or problems identified in their operation. Applying organizations are expected to use the program for those specific purposes.
- (2) This course is enriched with contents and facilitation schemes specially developed in collaboration with relevant prominent organizations in Japan. These special features enable the course to meet specific requirements of applying organizations and effectively facilitate them toward solutions for the issues and problems.
- (3) In this connection, applying organizations are expected to nominate the most qualified candidates to address the said issues or problems, carefully referring to the qualifications described in section “2. Nominee Qualifications” below.

2. Nominee Qualifications

Applying organizations are expected to select nominees who meet the following qualifications.

(1) Essential Qualifications

Civil engineers of central or local government with at least 5 years of experience in infrastructure management (except for building / housing).

1) **Educational Background:**

University graduates or equivalent in the area of civil engineering.

2) **English Language Qualification:**

Language: have a competent command of English which is equal to TOEFL iBT 80 or more (This training program includes active participation in discussions, which requires HIGH competence of English ability. Please attach an official certificate for English ability such as TOEFL, TOEIC, etc., if possible.)

3) **Health:** must be in good health to participate in the program in Japan. To

reduce the risk of worsening symptoms associated with respiratory tract infection, please be honest to declare in the Medical History (QUESTIONNAIRE ON MEDICAL STATUS RESTRICTION of the application form) if you have been a patient of following illnesses; Hypertension / Diabetes / Cardiovascular illness / Heart failure / Chronic respiratory illness.

4) Technical Requirements for the Online Self-study Program (Computer)

✓ **Technology Proficiency:**

- Basic computer skills such as, sending/receiving e-mail with attachments, and using a web browser.
- This program may be delivered using the following services; Web Conferences (Ex. Zoom, Webex, MS Teams), Cloud Storage (Ex. Google Drive, Gigapod), and YouTube.

✓ **Internet Connection:**

- High Speed Broadband Connection (at least 2Mbps) from your office or your home.

*In principle internet access charge incurred for this course shall be borne by you/your organization.

<Minimum Requirement>

✓ **Hardware:**

- Regular access to a computer, either from your home or from your office.
- Operating System: Windows or Mac OS (Updated version is preferred).
- Processor: Intel i3 or equivalent; 2GHs or higher
- Memory: 2GB of RAM or higher
- Hard Drive Space: 2GB free disk space
- Browser: Google Chrome is preferred browser. (Edge, Firefox, Safari can be used)

*In some cases, Smartphone (Android OS or Apple iOS) can be used as substitute of PC.

✓ **Hardware and Software which may be required:**

- Webcam Microphone, and Audio output Device (Speaker or Headset)
- Zoom Client for Meeting (<https://zoom.us/download>)
- Webex

(2) Recommended Qualifications

- 1) Age:** between the ages of twenty-five (25) and forty five (45) years
- 2) Gender Equality and Women's Empowerment:** Women are encouraged to apply for the program. JICA is committed to promoting gender equality and women's empowerment, and provides equal opportunities for all applicants regardless of their sexual orientation or gender identity.

3. Required Documents for Application

- (1) Application Form:** The Application Form is available at the JICA overseas office (or the Embassy of Japan)

* If you have any difficulties/disabilities which require assistance, please specify necessary assistances in the QUESTIONNAIRE ON MEDICAL STATUS RESTRICTION (1-(c)) of the application form. Information will be reviewed and used for reasonable accommodation.

- (2) Photocopy of Passport or ID:** You should submit it with the application form if you possess your passport which you will carry when entering Japan for this program. If not, you are requested to submit its photocopy as soon as you obtain it.

*The following information should be included in the photocopy:

Name, Date of Birth, Nationality, Sex, Passport Number and Expiry Date

- (3) English Score Sheet (photocopy):** to be submitted with the application form, if the nominees have any official English examination scores. (e.g., TOEFL, TOEIC, IELTS)

4. Procedures for Application and Selection

(1) Submission of the Application Documents

Closing date for applications: **Please confirm the local deadline with the JICA overseas office (or the Embassy of Japan).**

(All required material must arrive at JICA Kansai Center in Japan by **May 8, 2023**)

(2) Selection

Primary screening is conducted at the JICA overseas office (or the embassy of Japan) after receiving official documents from your government. JICA Center will consult with concerned organizations in Japan in the process of final selection. Applying organizations with the best intentions to utilize the opportunity will be highly valued.



The Government of Japan will examine applicants who belong to the military or other military-related organizations and/or who are enlisted in the military, taking into consideration of their duties, positions in the organization and other relevant information in a comprehensive manner to be consistent with the Development Cooperation Charter of Japan.

(3) Notice of Acceptance

The JICA overseas office (or the Embassy of Japan) will notify the results **not later than May 22 2023.**

5. Additional Documents to be Submitted by Accepted Participants

Accepted participants should submit “Basic Information Matrix” (Word) and “Job Report” (PPT) by e-mail by **June 9, 2023.** As for details, please see ANNEX1.

6. Conditions for Participation

The participants of KCCP are required

- (1) to strictly observe the course schedule,
- (2) not to change the program topics
- (3) not to record or share the online contents without JICA’s permission
- (4) to comply with the use conditions of copyrighted works by each copyright holder, when using texts and other materials distributed for KCCP.
- (5) not to change the air ticket (and flight class and flight schedule arranged by JICA) and lodging by the participants themselves,
- (6) to understand that leaving Japan during the course period (to return to home country, etc.) is not allowed (except for programs longer than one year),
- (7) not to bring or invite any family members (except for programs longer than one year),
- (8) to carry out such instructions and abide by such conditions as may be stipulated by both the nominating Government and the Japanese Government in respect of the course,
- (9) to observe the rules and regulations of the program implementing



- partners to provide the program or establishments,
- (10) not to engage in political activities, or any form of employment for profit,
 - (11) to discontinue the program, should the participants violate the Japanese laws or JICA's regulations, or the participants commit illegal or immoral conduct, or get critical illness or serious injury and be considered unable to continue the course. The participants shall be responsible for paying any cost for treatment of the said health conditions except for the medical care stipulated in (3) of "5.Expenses", "Administrative Arrangements",
 - (12) to return the total amount or a part of the expenditure for the KCCP depending on the severity of such violation, should the participants violate the laws and ordinances,
 - (13) not to drive a car or motorbike, regardless of an international driving license possessed,
 - (14) to observe the rules and regulations at the place of the participants' accommodation, and
 - (15) to refund allowances or other benefits paid by JICA in the case of a change in schedule.

Administrative Arrangements

1. Organizer (JICA Center in Japan)

- (1) **Center:** JICA Kansai Center (JICA Kansai)
- (2) **Program Officer:** Mr. OGAWA Kazumasa
(Ogawa.Kazumasa@jica.go.jp)

2. Implementing Partner

- (1) **Name:** Ministry of Land, Infrastructure, Transportation and Tourism, Kinki Regional Development Bureau
- (2) **URL:** <https://www.kkr.mlit.go.jp/profile/gaiyou/ro3e.html>

3. Travel to Japan:

- (1) **Air Ticket:** In principle, JICA will arrange an economy-class round-trip ticket between an international airport designated by JICA and Japan.
- (2) **If you return home country for your own reasons, JICA will not cover the cost.**
- (3) **Travel Insurance:** Coverage is from time of arrival up to departure in Japan. Thus, traveling time outside Japan (include damaged baggage during the arrival flight to Japan) will not be covered.

4. Accommodation in Japan:

Basically, JICA will arrange the following accommodations for the participants in Japan (During the quarantine period, we plan to stay at a hotel near Narita Airport in Japan.)

JICA Kansai Center (JICA Kansai)

Address: 1-5-2 Wakinohama Kaigandori, Chuo-ku, Kobe, Hyogo 651-0073, Japan

TEL: 81-78-261-0383/0341 FAX: 81-78-261-0465

(where “81” is the country code for Japan, and “78” is the local area code)

If there is no vacancy at JICA Kansai, JICA will arrange alternative

accommodations for the participants. Please refer to facility guide of JICA Kansai at its URL,

<https://www.jica.go.jp/kansai/english/office/index.html>

5. Expenses

The following expenses in Japan will be provided by JICA

- (1) Allowances for meals, living expenses, outfits, and shipping and stopover.
- (2) Expenses for study tours (basically in the form of train tickets).
- (3) Medical care for participants who become ill after arriving in Japan (the costs related to pre-existing illness, pregnancy, or dental treatment are not included).
- (4) Expenses for program implementation, including materials.
- (5) For more details, please see “III. ALLOWANCES” of the brochure for participants titled “KENSU-IN GUIDE BOOK,” which will be given before departure for Japan.

*Link to JICA HP (English/French/Spanish/Russian):

https://www.jica.go.jp/english/our_work/types_of_assistance/tech/acceptance/training/index.html

6. Pre-departure Orientation

A pre-departure orientation will be held at respective country's JICA office (or the Japanese Embassy), to provide Participants with details on travel to Japan, conditions of the course, and other matters.

*YouTube of “Knowledge Co-Creation Program and Life in Japan” and “Introduction of JICA Center” are viewable from the link below.

Part I: Knowledge Co-Creation Program and Life in Japan	
English ver.	https://www.youtube.com/watch?v=SLurfKugrEw
French ver.	https://www.youtube.com/watch?v=v2yU9lSYcTY
Spanish ver.	https://www.youtube.com/watch?v=m7l-WlQSDjI
Russian ver.	https://www.youtube.com/watch?v=P7_ujz37AQc
Arabic ver.	https://www.youtube.com/watch?v=i1BQqdpXQb4
Part II: Introduction of JICA Centers in Japan	
JICA Kansai	https://www.jica.go.jp/kansai/english/office/index.html



7. Other Information

- (1) Participants who have successfully completed the program will be awarded a certificate by JICA.
- (2) For the promotion of mutual friendship, JICA Kansai encourages international exchange between JICA participants and local communities, including school and university students as a part of development education program. JICA participants are expected to contribute by attending such activities and will possibly be asked to make presentations on the society, economy and culture of their home country.
- (3) Participants are recommended to bring laptop computers for your convenience, if possible. During the program, participants are required to work on the computers, including preparation of Action Plan(AP), etc. Most of the accommodations have internet access. Also, there is a computer room in JICA Kansai where 6 desk-top computers are available with internet access.
- (4) Participants are requested to bring athletic shoes and backpack (or small suitcase). Athletic shoes are necessary for field visit and backpack (or small suitcase) is necessary when you go out for a short trip to other cities. (so that you don't need to bring everything) And to prevent infection of Covit-19, we request to bring enough masks and medical thermometer.
- (5) Allowances, such as for living, outfit, and shipping, will be deposited to your temporary bank account (opened by JICA) 2 to 5 days after your arrival in Japan. It is highly advised to bring some cash in order to cover necessary expense for this period.
- (6) It is very important that some of your currency must be exchanged to Japanese Yen at airports before your arrival. It is quite difficult to exchange money after that, due to limited availability of facility or time during the program

Annex1: BIM, Job Report

NECESSARY CONTENTS OF BASIC INFORMATION MATRIX & JOB REPORT (Only for accepted participants)

Accepted participants are required to submit <A> and **by June 9, 2023** to Ogawa.Kazumasa@jica.go.jp (Mr. OGAWA Kazumasa)

< A > Basic Information Matrix

The Basic Information Matrix aims to sum up basic information about disasters and share them with other participants and instructors. The Basic Information Matrix is divided into three parts. The first section is asking some data on disaster for Infrastructure. The second section is the information related to assistance by Development Partners. The third section is asking the information on the budget of disaster prevention. It would be desirable that each participant fills out this part in cooperation with respective country's JICA office. (Please use the format on next page)

< B > Job Report

1. Style

- (1) Job report should be prepared by Microsoft® Power Point.
- (2) Job report should cover the following five elements
 - 1) The missions of participants' organization and his/her own duty.
 - 2) Natural disasters which typically occur in participant's country, and that have occurred in recent years
 - 3) Experience(s) of natural disaster management in participant's duties
 - 4) Problems and issues at participant's organization that need to be solved or improved from a perspective of "disaster risk reduction on infrastructures (river, road and port). Please describe them along the following angles.
 - Disaster mitigation
 - Restoration from natural disasters
 - Maintenance and management
 - Disaster risk reduction measures
 - Others
 - 5) Objectives to participate in this program

Note: Please use some tables, figures and pictures for better understanding of other participants and lecturers (e.g. pictures taken before and after disasters).

- (3) The report should be about 10 slides (Power Point). On each slide, please indicate only main points (NOT long-winded sentences).

2. Language : English

3. Job Report Presentation:

- (1) Job report presentation is planned to be held at the beginning of the program.
- (2) Each participant has 15-20 minutes to make a presentation and 5 minutes for Q&A.

Basic Information Matrix

[1] Information on Disaster for Public Works		
1-1-1 Geographic & Geological conditions		
1-1-2 Climatic Division, Annual Rainfall, Peak Rainfall per 1 hour	Climatic Division	
	Annual Rainfall	
	Peak Rainfall per 1 hour	
1-1-3-(a) Existence of Hydrological Observation Statistical Data (Please select "✓" if the observation is carried out, or "X" if not.)	Rainfall	
	Water Level	
	Tide Level	
1-1-3-(b) Existence of sharing information system from the hydrological observation to the organization in charge of infrastructure (Please select "✓" if such system exists, or "X" if not)		
1-1-3-(c) Existence of disaster related information sharing system from the hydrological observation to citizens.(Disaster related information : Weather warning information and information regards to natural disasters such as earthquake, tidal wave, tsunami, landslide, flood, volcanic activity, etc.) (Please select "✓" if the system is existed, or "X" if not)	Weather warning information	
	Disaster related information	
	Earthquake	
	Tidal wave	
	Tsunami	
	Landslide	
	Flood	
	Volcanic Activity	
1-1-4-(a) Please indicate most typical disasters in your country and the situation in the past.		
1-1-4-(b) Existence of record/statistical data of the past natural disasters. (Please select "✓" if such record/data exists, or "X" if not)		

<p>1-1-5 Disasters which your organization and government try to tackle with high priority. (Please choose disasters within the above answers (1-1-4-(a)))</p>		
<p>1-1-6 Please indicate some countermeasures plan such as long-term plan, maintenance plan, etc., and some hard/soft countermeasures which currently your organization are implementing against the natural disasters which are mentioned in the above question 1-1-5.</p>		
<p>1-1-7 Please indicate challenges and policies/technologies which are required to implement 1-1-6.</p>		
<p>1-2-1 Existence of Law(s) and/or System(s) about Disaster Restoration related to 1-1-4 and 1-1-5. (Please select "✓" if such law(s) and/or system(s) exist for the following infrastructure, or "X"if not)</p>	Road	
	River	
	Port	
	others	
<p>1-2-2 Design basis and standards that prescribes post-disaster construction methods (Please describe outline of them on the each box if such design basis exists)</p>	Road	
	River	
	Port	
	others	
<p>1-3-1 "intangible" system(s) against disasters(e.g. a hazard map to show prediction of damages by disasters, water level gauge and early warning system etc.)</p>		
<p>1-3-2 Maintenance manual which is based on the lesson learned from the past disasters in your organization. (Please describe outline of them if such maintenance manual exists)</p>		
<p>1-4 Technologies and countermeasures (hard/soft) which you want to learn in Japan.</p>		

【2】 Assistance by Development Partners(donors)	
2-1 Past, Present and Future Projects related to this course supported by Japan	
2-2 Project or Assistance by other donors/countries	
【3】 Budget for Disaster Prevention	
3-1 How the organization budgets for disaster preparedness projects	
3-2 Percentage of the national budget (or the budget of the local government to which you belong) that is spent on advance disaster management	
3-3 Percentage of the national budget (or the budget of the local government to which it belongs) allocated to disaster response including rescue and relief operations.	

Annex2: Schedule in FY2022

<For your reference only>

JICA Knowledge Co-Creation Program (Group and Region Focus)						
Schedule for Disaster Risk Reduction and Management on Infrastructure (River, Road and Port) (202107989J001)						
Period in Japan: October 28th, 2022 ~ December 20th, 2022						
						As of Oct. 26, 2022
This Schedule is subject to change.						
Date		Time	Type	Place to Visit	Subject	Accommodation
17-Oct				Your Home country	Online Self-study	
25-Oct					traveling to Japan	
26-Oct					Arrival in Japan	
27-Oct						
28-Oct	Fri	9:00 10:00 10:30 13:30 15:30	10:00 10:30 15:00 17:00	JICA Kansai O Earthquake Museum	Briefing Program Orientation by JICA Course Orientation by CSKR The Great Hanshin Awaji Earthquake Memorial Disaster Reduction and Human Renovation Institution	Kobe-Sannomiya
29-Oct	Sat		N		No Official Schedule	Kobe Sannomiya
30-Oct	Sun		N		No Official Schedule	Kobe-Sannomiya
31-Oct	Mon	10:15 11:00 13:30 16:45	11:00 12:00 16:30 17:45	L L D P	JICA Kansai General Orientation DRR Efforts of JICA Self-introduction and Introduction of Participating Countries Japanese Language Class 1	Kobe-Sannomiya
1-Nov	Tue	10:30 13:30 14:00	12:00 14:00 16:30	L L L	JICA Kansai Disaster Risk Administration in Japan Guidance on Job Report Presentation What is Rekishi Kaiko? What is Japaneseness?	JICA Kansai TEL: 078-261-0341
2-Nov	Wed	09:30 11:00 13:30 14:30	11:00 12:30 14:30 16:30	L L L D	JICA Kansai Natural Environment Surrounding Japan River Management Policy and River Improvement Plan in Japan Guidance on Action Plan Preparation Learning Action Plan from Ex-participant	JICA Kansai
3-Nov	Thu		N		No Official Schedule	JICA Kansai
4-Nov	Fri	09:30 11:00 13:30 15:15	11:00 12:30 15:00 16:15	L L L P	JICA Kansai Road Development in Japan Disaster Response of Kinki Regional Development Bureau (KRDB) Changes in Flood Control Projects in the Kinki Region (Yodo River and Yamato River) Japanese Language Class 2	JICA Kansai
5-Nov	Sat		N		No Official Schedule	JICA Kansai
6-Nov	Sun		N		No Official Schedule	JICA Kansai
7-Nov	Mon	09:30 11:00 14:30	11:00 12:30 17:00	L L O	JICA Kansai (Submission of Job Report (Powerpoint) Disaster-Resilient Roads Disaster Restoration (Disaster Assessment) Outline of Hanshin Expressway Company Explanation of Hanshin Expressway Earthquake Museum, BCP of Hanshin Express Way Company	JICA Kansai
8-Nov	Tue	09:30 13:30	12:00 16:30	P P	JICA Kansai Job Report Presentation 1 Job Report Presentation 2	JICA Kansai
9-Nov	Wed	10:00 16:30	15:30	O O	Intex Osaka Gate Tower Building	JICA Kansai
10-Nov	Thu	09:30 13:30	12:30 16:30	D D	JICA Kansai Visualization of Issues (Issue Analysis) PCM 1 Visualization of Issues (Issue Analysis) PCM 2	JICA Kansai
11-Nov	Fri	10:30 12:15 14:00 15:30	11:15 13:30 15:30 17:00	D O L O	KRDB, MLIT Osaka Castle Kinki Coastal Area Disaster Prevention Center	JICA Kansai
12-Nov	Sat		N		No Official Schedule	JICA Kansai
13-Nov	Sun		N		No Official Schedule	JICA Kansai



14-Nov	Mon	09:30		11:00	L	JICA Kansai	Activities on prevention/mitigation of damages by weather disasters in JMA	Takefu
		11:00		12:30	L		Earthquake Information & Tsunami Warning Service	
		14:45		15:30	O	Aqua Biwa	Seta River Submerged Weir	
15-Nov	Tue	09:30		11:30	O	Asuwagawa Dam Construction Site	Move to Fukui	JICA Kansai
		14:30		15:00	O	Seseragi no Sato Kora	Asuwagawa Dam Construction Site	
							DRR Road Side Station (Seseragi no Sato Kora)	
16-Nov	Wed	09:30		11:00	L	JICA Kansai	Move back to JICA Kansai	JICA Kansai
		11:00		12:30	L		Overview of New Urban Improvement Projects (Inland Area Development and Reclamation Projects) in Kobe	
		13:30		16:30	P		Reconstruction and Revival of the Port of Kobe	
17-Nov	Thu	10:00		11:30	L	Yodo River Dams Integrated Control Office	Yodo River Improvement Works(History of River Improvement Works(L)	JICA Kansai
							Integrated Control of Dams in Yodo River System	
		13:00		13:30	O	Amagase Dam	Outline of Amagase Dam	
18-Nov	Fri	13:30		15:00	O	Amagase Dam	Amagase Dam Redevelopment Project Site	JICA Kansai
		15:15		16:00	O	Byodoin Temple	Byodoin Temple	
		10:00		11:30	O	Kema Pump Station	Yodo River Improvement Works(History of River Improvement Works(L) Kema Pump Station(O) Yodo Great Weir(O)	
19-Nov	Sat						Shirokita Wand and Super Levee	JICA Kansai
							Sakuradeai Kan	
							Review 1	
20-Nov	Sun				N	Fushimi Inari Shrine	Fushimi Inari Shrine	JICA Kansai
					N		No Official Schedule	
					N		No Official Schedule (Submission of Problem Tree)	
21-Nov	Mon	09:30		10:30	L	Nishiosaka Flood Control Office	Disaster Risk and its Measures of Osaka Prefectural Government	JICA Kansai
		10:30		12:00	L		Flood control and countermeasures against flood disasters of Osaka Prefecture	
		13:00		14:30	O	Tsunami Storm Surge Disaster Prevention Station	Tsunami Storm Surge Disaster Prevention Station	
22-Nov	Tue	15:00		15:30	O	Shirinashi River Tide Gate	Shirinashi River Tide Gate	JICA Kansai
		10:00		10:40	O	Hanazono Multipurpose Flood Retarding Basin	Hanazono Multipurpose Flood Retarding Basin	
		10:40		11:10	O	Matsubaraminai Regulating Reservoir	Matsubaraminai Regulating Reservoir	
23-Nov	Wed	11:30		12:00	O	Wakae Vertical Shaft	Wakae Vertical Shaft	JICA Kansai
		13:30		14:30	L	Sayamaike Dam Museum	History of Civil Engineering Technology, Civil Engineering Projects	
		14:30		16:00	O	Sayamaike Dam Museum	Sayamaike Dam Museum, Sayamaike Dam	
24-Nov	Thu				N		No Official Schedule	JICA Kansai
		09:30		12:30	L	JICA Kansai	Debris Flow Countermeasures in Kinki Region	
		13:30		16:30	L		Role of Sabo and Sediment Disaster Countermeasure Technologies	
25-Nov	Fri	09:30		12:30	D	JICA Kansai	Review 2	JICA Kansai
		13:30		15:00	O	Rokko Sabo Office	Outline of Rokko Sabo Dams	
		15:00		16:30	O	Obanoyamahigashi Sabo Dam	Sabo Dam	
26-Nov	Sat						No Official Schedule	JICA Kansai
							Move to Tokyo	
27-Nov	Sun							Shinjuku
28-Nov	Mon	09:30		11:00	L	JICA Tokyo	International Cooperation by MLIT	Shinjuku
		11:00		12:00	L		Disaster Countermeasures of MLIT	
		13:30		16:30	L		Introduction on DRR Technologies of Japan	
29-Nov	Tue	10:00		12:30	O	Takuwa Corporation Ltd.	Measurement Instruments for Disaster Observation and Their Handling	Shinjuku
		14:30		17:30	O	Tokyo Aqua line, Tokyo Tower	Tokyo Aqua Line, Tokyo Tower	
30-Nov	Wed	09:30		12:30	D	JICA Tokyo	Review 3	Shinjukul
		13:30		16:30	L		Prevention, Mitigation and Recovery System of Lifeline Seismic Disasters	
							(Submission of Action Plan 1st Draft)	
1-Dec	Thu	09:30		11:00			Move to Tsukuba	Tsukuba
		11:00		12:00	O	Tsukuba Central Research Institute,	Public Works Research Institute (PWRI)	
		13:30		16:30	L		Road Slope Disaster Management in Japan	
2-Dec	Fri	09:30		12:30	P	Tsukuba Central Research Institute,	Flood Forecasting Model Outline and Practice 1	Tsukuba
		13:30		16:30	P		Flood Forecasting Model Outline and Practice 2	
							Move back to JICA Kansai	
3-Dec	Sat				N		No Official Schedule	JICA Kansai
					N		Review 4	
					N		Comprehensive Flood Control Efforts of Ina River Office	
4-Dec	Sun	09:30		12:30	D	JICA Kansai	Yamato River Improvement Works	JICA Kansai
		14:00		16:00	O	Ina River Office	Kamenose Landslide Countermeasures Project	
		10:00		11:30	L	Yamato River Office		
5-Dec	Mon	12:30		14:30	O	Kamenose Landslide Museum	Kamenose Landslide Countermeasures Project	JICA Kansai
		15:30		16:40	O	Todaiji Temple	Todaiji Temple	
		09:30		12:00	L	JICA Kansai	River Improvement Methods by Utilizing Nature and Disaster Management Projects(Groin Works)	
6-Dec	Tue	13:00		14:15			Supplementary Explanation in Bus	JICA Kansai
		14:15		15:00	O	Katsura River	Katsura River Groin Works	
		15:30		16:45	O	Arashiyama	Arashiyama, Tenryuji temple	
7-Dec	Wed	9:30		12:00	O	Kobe Port and Harbor Office	Outline of Earthquake Resistance Kobe Port Facilities	JICA Kansai
		14:15		16:15	O	Okura Beach	Higashi-Harima Coastal Conservation Facilities Improvement Project	
		10:45		13:15	O	Tsunami Evacuation Tower in Haya District	Tsunami Evacuation Plan of Tanabe City (Tsunami Evacuation Tower in Haya Area)	
8-Dec	Thu	13:30		14:30	O	Tsunami Evacuation Route in Haya Ihara District	Development of Tsunami Evacuation Routes Using Road Slopes	JICA Kansai
		15:30		16:20	O	Inamura-no-Hi no Yakata	Tsunami Education Center(Inamura-no-Hi no Yakata)	
9-Dec	Fri				N		No Official Schedule	JICA Kansai
					N		No Official Schedule (Submission of Action Plan 2nd Draft)	
					N		Lecture and Town Watching at Aotani Area in Kobe City for	
10-Dec	Sat	09:30		12:30	P	JICA Kansai	Developing Hazard Map	JICA Kansai
		14:00		17:00	P	JICA Kansai	Developing Hazard Map	
		10:00		12:00	O	Akashi Kaikyo Bridge	Akashi Kaikyo Bridge	
11-Dec	Sun	13:20		14:10	O	Nojima Fault Preservation Museum	Nojima Fault Preservation Museum	Hiroshima
12-Dec	Mon	9:00		11:30	O	Hiroshima Seibu Mountain Range Sabo Office	Move to Hiroshima	JICA Kansai
		13:50		15:30	O	Hiroshima Peace Memorial Museum	Sediment Disasters Countermeasures in Hiroshima	
							Hiroshima Peace Memorial Museum	
13-Dec	Tue						Move back to JICA Kansai	JICA Kansai
		09:30		12:30	D	JICA Kansai	Action Plan Preparation 1	
		13:30		16:30	D	JICA Kansa	Action Plan Preparation 2	
14-Dec	Wed	09:30		12:30	D	JICA Kansai	Action Plan Preparation 3	JICA Kansai
		13:30		16:30	D	JICA Kansai	Action Plan Preparation 4	
15-Dec	Thu				N		No Official Schedule	JICA Kansai
					N		No Official Schedule	
					N		Action Plan Presentation 1	
16-Dec	Fri	09:30		12:30	P	JICA Kansai	Action Plan Presentation 2	JICA Kansai
		13:30		16:30	P	JICA Kansai	Evaluation Meeting	
							Closing Ceremony	
17-Dec	Sat				N		No Official Schedule	JICA Kansai
					N		No Official Schedule	
					N		Action Plan Presentation 1	
18-Dec	Sun	09:30		12:30	P	JICA Kansai	Action Plan Presentation 2	JICA Kansai
		13:30		16:30	P	JICA Kansai	Evaluation Meeting	
		11:15		11:45			Closing Ceremony	
19-Dec	Mon				N		No Official Schedule	JICA Kansai
					N		No Official Schedule	
					N		Action Plan Presentation 1	
20-Dec	Tue	09:30		12:30	P	JICA Kansai	Action Plan Presentation 2	JICA Kansai
		13:30		16:30	P	JICA Kansai	Evaluation Meeting	
		11:15		11:45			Closing Ceremony	
Activity Type: L- Lecture, O- Observation, P-Practice/Presentation, N- No Official Schedule								
: Study trip								



For Your Reference

JICA and Capacity Development

Technical cooperation is people-to-people cooperation that supports partner countries in enhancing their comprehensive capacities to address development challenges by their own efforts. Instead of applying Japanese technology per se to partner countries, JICA's technical cooperation provides solutions that best fit their needs by working with people living there. In the process, consideration is given to factors such as their regional characteristics, historical background, and languages. JICA does not limit its technical cooperation to human resources development; it offers multi-tiered assistance that also involves organizational strengthening, policy formulation, and institution building.

Implementation methods of JICA's technical cooperation can be divided into two approaches. One is overseas cooperation by dispatching experts and volunteers in various development sectors to partner countries; the other is domestic cooperation by inviting participants from developing countries to Japan. The latter method is the Knowledge Co-Creation Program, formerly called Training Program, and it is one of the core programs carried out in Japan. By inviting officials from partner countries and with cooperation from domestic partners, the Knowledge Co-Creation Program provides technical knowledge and practical solutions for development issues in participating countries.

The Knowledge Co-Creation Program (Group & Region Focus) has long occupied an important place in JICA operations. About 400 pre-organized courses cover a wide range of professional fields, ranging from education, health, infrastructure, energy, trade and finance, to agriculture, rural development, gender mainstreaming, and environmental protection. A variety of programs is being customized by the different target organizations to address the specific needs, such as policy-making organizations, service provision organizations, as well as research and academic institutions. Some programs are organized to target a certain group of countries with similar developmental challenges.

Japanese Development Experience

Japan, as the first non-Western nation to become a developed country, built itself into a country that is free, peaceful, prosperous and democratic while preserving its tradition. Japan will serve as one of the best examples for our partner countries to follow in their own development.

From engineering technology to production management methods, most of the know-how that has enabled Japan to become what it is today has emanated from a process of adoption and adaptation, of course, has been accompanied by countless failures and errors behind the success stories.

Through Japan's progressive adaptation and application of systems, methods and technologies from the West in a way that is suited to its own circumstances, Japan has developed a storehouse of knowledge not found elsewhere from unique systems of organization, administration and personnel management to such social systems as the livelihood improvement approach and governmental organization. It is not easy to apply such experiences to other countries where the circumstances differ, but the experiences can provide ideas and clues useful when devising measures to solve problems.

JICA, therefore, would like to invite as many leaders of partner countries as possible to come and visit us, to mingle with the Japanese people, and witness the advantages as well as the disadvantages of Japanese systems, so that integration of their findings might help them reach their developmental objectives.



This information pertains to one of the JICA Knowledge Co-Creation Programs (Group & Region Focus) of the Japan International Cooperation Agency (JICA) implemented as part of the Official Development Assistance of the Government of Japan based on bilateral agreement between both Governments.



Correspondence

For enquiries and further information, please contact the JICA office or Embassy of Japan.

Further, address correspondence to:

JICA Kansai Center (JICA Kansai)

Address: 1-5-2, Wakinohama-kaigandori, Chuo-ku, Kobe, Hyogo 651-0073, Japan

TEL: +81-78-261-0383/0341 FAX: +81-78-261-0465

("81" is the country code for Japan, and "78" is the local area code)