



Face-to-Face (in Japan)

Knowledge Co-Creation Program (Group and Region Focus)

REMOTE SENSING OF FOREST RESOURCES JFY2025



Course Number: 202411703J001


Course Period: May 27- July 10, 2025



- PRAZO DE INSCRIÇÃO NO BRASIL:
27/03/2025
- EMAIL PARA ENVIO DA INSCRIÇÃO:
jicabr-training@jica.go.jp

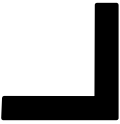
NOTE: If there are any difficulties in reading this document, please contact JICA Office in your country or JICA Center in Japan.

NOTE: Depending on the circumstances, some or all of the program periods may be changed or cancelled after the application has been accepted.



How can we better manage forest remote sensing?

It aims to equip participants with the skills and knowledge necessary to utilize remote sensing for forest resource assessment, with insights from global discussions on sustainable forest management, including REDD+.





Outline

Halting deforestation and forest degradation is known as an urgent issue in global society. But in many developing countries, there are not sufficient systems nor personnel for forest monitoring so that they can't investigate forest resources, which is basic info for REDD+. In this training, participants can acquire basic remote sensing skills and make a database using basic GIS tech in order to understand forest resources in their own countries.

The period of the program is from May 27- July 10, 2025

All sessions are carried out in English.

Course Capacity:
11 participants



JICA Knowledge Co-Creation Program (KCCP)

The Japanese Cabinet released the Development Cooperation Charter in February 2015, stated that “In its development cooperation, Japan has maintained the spirit of jointly creating things that suit partner countries while respecting ownership, intentions and intrinsic characteristics of the country concerned based on a field oriented approach through dialogue and collaboration. It has also maintained the approach of building reciprocal relationships with developing countries in which both sides learn from each other and grow and develop together.” We believe that this ‘Knowledge Co-Creation Program’ will serve as a foundation of mutual learning process.

Table of Contents

For What?

(Background, Objectives)	6
--------------------------------	---

To Whom?

(Job Areas and Organizations, Targeted Countries)	7
---	---

When?

(Program Period)	7
------------------------	---

Where?

(Place Where the Program Take Place)	8
--	---

How?

(How to Learn, Language, Commitment to the SDGs)	8
--	---

(Program Structure)	9-12
---------------------------	------

(Management Members)	13
----------------------------	----

Eligibility and Procedures

(Expectations to the Applying Organizations, Nominee Qualifications)	14-15
--	-------

(Required Documents for Application)	16
--	----

(Procedures for Application and Selection)	16
--	----

(Conditions for Participation)	17
--------------------------------------	----

Administrative Arrangements

(Organizer (JICA Center in Japan), Implementing Partner, Travel to Japan, Accommodation in Japan, Expenses, Pre-departure Orientation)	18-20
---	-------

Annex

(Job Report)	21-25
--------------------	-------

For Your Reference

(JICA and Capacity Development, Japanese Development Experience)	26-27
--	-------

Correspondence

(For Enquiries and Further Information)	28
---	----



For What?

Background

Addressing deforestation and forest degradation may play a significant role in climate change mitigation. CO₂ emissions from deforestation and forest degradation in developing countries might amount for about 20% of the total emissions of the world. Thus, it is a key challenge not only for developing countries but also for the whole world to address reducing emissions from deforestation and forest degradation in developing countries (REDD+), which could slow increase in atmospheric CO₂ concentrations.

However, there are not sufficient systems or personnel in many developing countries so that they can investigate the forest resources, which is basic information for REDD+. This constitutes a matter of immediate concern for the international community.

Remote sensing provides extensive information of forest resources in an efficient and effective manner. This

program will provide basic theory and skills of remote sensing of forest resources to improve forest management in developing countries, which also support the REDD+ related activities for the participants and is expected to contribute to the climate change mitigation.

Objectives

Participants are expected to acquire the basic skills and knowledge for using remote sensing with the aim of understanding forest resources in their own countries on the basis of international discussion of REDD+. Participants are expected to acquire the basic skills and knowledge for making database of their own countries using GIS technique.

To Whom?

Job Areas and Organizations

Administrative officials or researchers engaged in remote sensing of forest resources, forestry management and climate change mitigation.

Targeted Countries

Philippines, Thailand, Cambodia, Laos, Timor-leste, Viet nam, Bangladesh, Papua new guinea, Brazil, Cameroon, Democratic republic of the congo

Participants who have successfully completed the program will be awarded a certificate by JICA.

When?

Pre-departure Orientation

A pre-departure orientation will be held at respective country's JICA office (or the Japanese Embassy), to provide Participants with details on travel to Japan, conditions of the course, and other matters.

Programe In Japan

May 27- July 10, 2025



JICA Knowledge Co-Creation Program (Group and Region Focus)

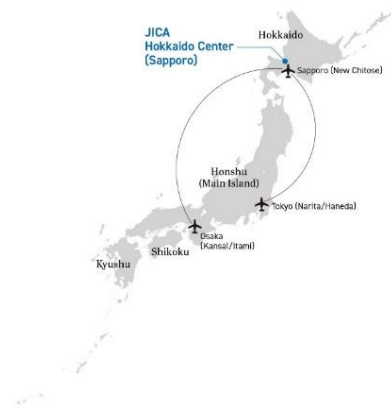
REMOTE SENSING OF FOREST RESOURCES

Course Number: 202411703J001

Where?

This course is carried in Hokkaido, Japan, organized by JICA Hokkaido Center.

City of Sapporo is the principal place for this program in Japan.



How?

How to Learn

- Lectures
- Field Visits
- Workshops
- Discussions
- Presentations



Watch



Listen



Experience



Study



Chat



Discuss



Present

Language

English



JICA Knowledge Co-Creation Program (Group and Region Focus)

REMOTE SENSING OF FOREST RESOURCES

Course Number: 202411703J001

Commitment to the SDGs



Program Structure

This program consists of the following components.

(1) Preliminary Phase in a participant's home country (March 2025 to April 2025) <i>Participating organizations make required preparation for the Program in the respective country.</i>	
Expected Modules Output	Activities
To overview the present situation and issues of forestry management in participants' respective countries	Preparation and submission of Inception Report

(2) Core Phase in Japan (May 27, 2025 to July 10, 2025) <i>Participants dispatched by the organizations attend the Program implemented in Japan.</i>		
Expected Modules Output	Contents	Activities
1. Acquire the current knowledge about the climate change including REDD+ and remote sensing, GIS applications	1. Formulate and give a presentation of Inception Report 2. Understand international discussion on REDD+, trends and effort of forest monitoring system, to visit the research field, to visit company, introduction of the precedent projects	Lecture Observation



JICA Knowledge Co-Creation Program (Group and Region Focus)

REMOTE SENSING OF FOREST RESOURCES

Course Number: 202411703J001

2. Learn about the basic theory and skills of remote sensing	3. Basic Knowledge of Remote Sensing: spectral characteristics, sensor types, characteristics of the data, mechanism of image classification, description of indicators, available software	Lecture and practice
3. Acquire the knowledge and technique for the practical use of remote sensing of forest resources	4. Acquisition of Remote Sensing Technology: pre-processing of data, creation of land cover map, and the calculation of the index interpretation	Lecture and Practice
4. Acquire the knowledge and technique for the practical use of GIS of forest resources	5. Acquisition of GIS technology: software, basic knowledge of data, utilizing the ecosystem services with the model of forest carbon stocks to mapping technology and decision-making	Lecture and Practice
5. Formulate the practical Action Plan for solving their own issues	6. Take advantage of technique learned in 3-5, to design database for forest resource monitoring. Using knowledge of 3-5, help to solve problem in their own country	To prepare action plan and make it presentation

NOTE: (1)

Each participant must submit Inception Report before arriving in Japan. Participants are requested to make Inception Report Presentation at the beginning of the training course, in order to share the respective countries information in the field of forestry management and using remote sensing technologies. Participants must prepare for Inception Report presentation before arriving in Japan. Inception Report must be written in English and fifteen (15) minutes will be allocated to each participant for the presentation (including interpretation and discussion). Presentation by using Microsoft Power Point is highly recommended. If possible, it is also recommended to bring a CD-R or USB etc. in which the Inception Report is saved, that will facilitate report making.

This training includes a lot of practical trainings. Participants are requested to help each other.

(3) Finalization Phase in a participant's home country <i>Participating organizations produce final outputs by making use of results brought back by participants. This phase marks the end of the Program.</i>	
Modules	Activities
Implementation of the Action Plan	Application and implementation of the Action Plan back in respective home country

NOTE: (2)

“Action Plan” of this course is the guide to solve your issues for development of Remote Sensing of Forest Resources.

Each participant must submit the **Action Plan** report at the end of the course.

Contents to be included at least:

- Background (the problems to be solved)
- Objective and Expected Outcomes
- Actions/Operations
- Schedule (Short term, mid-term if necessary)
- Estimated budget (if possible) etc.

Followings must be well considered in Action Plan:

- The Plan must be *Feasible*.
- Obtained knowledge through the program must be *Fully Utilized*.
- *Clarify the role of yourself* in the plan

ex. having an educative program, making one's work more efficient, creating base maps, etc.

***If you could, please bring some Information and your Target Area Data for the practical lesson and also for Action Plan Report.**

<Structure of the program>

1st Week @Tokyo

Module 1. Current trends on GIS, Remote Sensing, and environmental discussions

- Review of important background related to remote sensing and GIS work.
(Climate Change, REDD+, SDGs, Partnership etc.)
- Basic information of Satellite Operation



JICA Knowledge Co-Creation Program (Group and Region Focus)

REMOTE SENSING OF FOREST RESOURCES

Course Number: 202411703J001

- Geospatial data infrastructure of Japanese Government
- Latest technologies on Remote Sensing, GIS, GPS
- Overview of forest management in Japan
- Introduction of JICA projects related to Sustainable Forest management

2nd Week @Hokkaido

Module 2. Basic theory of remote sensing

- Overview of Remote sensing
- Remote sensing data characteristic including SAR and LiDAR data
- Understanding preprocessing of remote sensing data
- Basic of classification and change detection
- Basic of Accuracy assessments

3rd, 4th Week @Hokkaido

Module 3. Knowledge and techniques for the practical use of remote sensing of forest resources and Drone applications

- Google Earth Engine for National level remote sensing analysis
- Drone Operation and its data analysis

5th, 6th @Hokkaido

Module 4. Practical use of GIS/GPS of forest resources

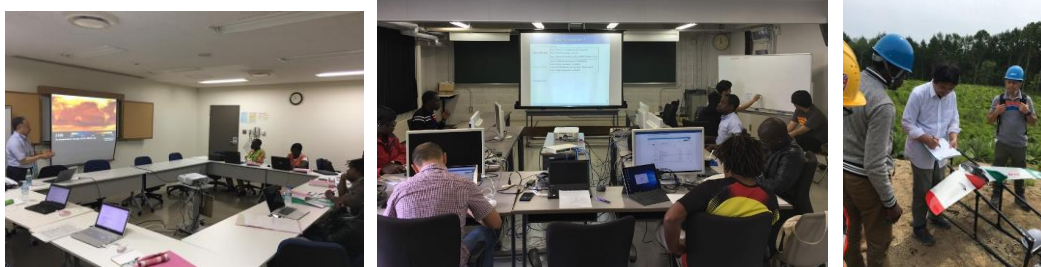
- Field data acquisition and database development
- Basic GIS for your action and community development
(Potential mapping etc.)

7th Week @Hokkaido

Module5. To formulate the practical Action Plan for solving their own issues

- Action plan preparation

The inception report presentation will be held at the beginning of this course.



Pictures of previous course: left: lecture of Climate change etc. center: Technical training of remote sensing, right: Drone operation at a test field

Management Members

Instructors

Rakuno Gakuen University

Prof. Dr. YOSHIMURA Nobuhiko (Course Leader)

Researcher specializing in GIS, remote sensing, REDD+, and ecosystem services. He holds a doctoral degree in Environmental Science and is affiliated with Rakuno Gakuen University, where he leads the Practical GIS laboratory. His research focuses on identifying and addressing regional issues both domestically and internationally through the application of GIS and related technologies. He has been engaged in numerous of JICA's cooperation projects in this sector for many years.

Program Coordinator

Ms. TAKAI Satsuki

She has extensive experience in coordinating the KCCP program, and has been a training coordinator for many courses including forestry sector.

Program Officer

Ms. SHINJEE Bolorchimeg

JICA, Hokkaido Center

Message: Greetings from Japan! Our region of Hokkaido is famous for its vast area and forests are an integral part of our lives. Let's gain a new perspective on your work through discussions with the lecturer and other participants!



JICA Knowledge Co-Creation Program (Group and Region Focus)

REMOTE SENSING OF FOREST RESOURCES

Course Number: 202411703J001

Eligibility and Procedures

1. Expectations to the Applying Organizations

- (1) This course is designed primarily for organizations that intend to address specific issues or problems identified in their operation. Applying organizations are expected to use the program for those specific purposes.
 - (2) This program is enriched with contents and facilitation schemes specially developed in collaboration with relevant prominent organizations in Japan. These special features enable the program to meet specific requirements of applying organizations and effectively facilitate them toward solutions for the issues and problems.
 - (3) As this program is designed to facilitate organizations to come up with concrete solutions for their issues, participating organizations are expected to make due preparation before dispatching their participants to Japan by carrying out the activities of the Preliminary Phase described in Program structure.
 - (4) Participating organizations are also expected to make the best use of the results achieved by their participants in Japan by carrying out the activities of the Finalization Phase described in Program structure.
-

2. Nominee Qualifications

Applying organizations are expected to select nominees who meet the following qualifications.

(1) Essential Qualifications

- 1) Current Duties: preferably to be an administrative official or researcher currently to be engaged in forestry management or REDD+. In some countries, forestry management or REDD+ are covered in the field of wildlife



JICA Knowledge Co-Creation Program (Group and Region Focus)

REMOTE SENSING OF FOREST RESOURCES

Course Number: 202411703J001

management, nature conservation and climate change mitigation. This course will accept the participant from such area. This course offers lots of practical training. Participants must be using GIS/Remote Sensing software in their current duties.

- 2) Experience in the relevant field: should have more than 3 years of practical experience or research in forestry management or REDD+.
- 3) Educational Background: should be a university graduate or have an equivalent qualification.
- 4) Language: have good command of spoken and written English which is equivalent to TOEFL CBT 200 or more, (This program includes active participation in discussions, an action plan development. Thus requires good competence of English ability. Please attach an official certificate for English ability such as TOEFL, TOEIC etc., if possible).
- 5) IT Literacy: must be needed. Nominees must know how to use Windows or Windows Office.
- 6) Health: must be in good health to participate in the program in Japan. To reduce the risk of worsening symptoms associated with respiratory tract infection, please be honest to declare in the Medical History (QUESTIONNAIRE ON MEDICAL STATUS RESTRICTION of the application form) if you have been a patient of following illnesses; Hypertension / Diabetes / Cardiovascular illness / Heart failure / Chronic respiratory illness.

(2) Recommended Qualifications

- 1) Expectations for the Participants:
- 2) Age: between the ages of twenty-five (25) to forty (40) years.
- 3) Gender Equality and Women's Empowerment: JICA seeks more female applicants due to the past records of fewer applications from women. JICA is committed to promoting gender equality and women's empowerment, and provides equal opportunities for all applicants regardless of their sexual orientation or gender identity.

Please notice that this course includes ground truth or field survey in the forest. Participants must have enough strength left to go through such survey in the field and bring comfortable shoes.



JICA Knowledge Co-Creation Program (Group and Region Focus)

REMOTE SENSING OF FOREST RESOURCES

Course Number: 202411703J001

3. Required Documents for Application

- (1) **Application Form:** The Application Form is available at **the JICA office**.
 - (2) **Photocopy of passport:** to be submitted with the application form, if you possess your passport which you will carry when entering Japan for this program. If not, you are requested to submit its photocopy as soon as you obtain it.
 - *Photocopy should include the followings:
Name, Date of birth, Nationality, Sex, Passport number and Expire date.
 - (3) **Inception Report:** to be submitted with the application form. Fill in the form (ANNEX) of this General Information, and submit it along with the Application Form.
 - (4) **Nominee's English Score Sheet:** to be submitted with the application form. If you have any official documentation of English ability. (e.g., TOEFL, TOEIC, IELTS)
-

4. Procedures for Application and Selection

- (1) **Submission of the Application Documents:**

Closing date for applications: **Please inquire to the JICA office.**
(All required material must arrive at JICA Center in Japan by April 10, 2025)
 - (2) **Selection:**

After receiving the documents through proper channels from your government, the JICA office will conduct screenings, and then forward the documents to the JICA Center in Japan. Selection will be made by the JICA Center in consultation with concerned organizations in Japan. *The applying organization with the best intention to utilize the opportunity of this program will be highly valued in the selection.* Qualifications of applicants who belong to the military or other military-related organizations and/or who are enlisted in the military will be examined by the Government of Japan on a case-by-case basis, consistent with the Development Cooperation Charter of Japan, taking into consideration their duties, positions in the organization, and other relevant information in a comprehensive manner.
 - (3) **Notice of Acceptance**

Notification of results will be made by the JICA office **not later than April 25, 2025**
-



5. Conditions for Participation

The participants of KCCP are required

- (1) to strictly observe the course schedule,
- (2) not to change the air ticket (and flight class and flight schedule arranged by JICA) and lodging by the participants themselves,
- (3) to understand that leaving Japan during the course period (to return to home country, etc.) is not allowed (except for programs longer than one year),
- (4) not to bring or invite any family members (except for programs longer than one year),
- (5) to carry out such instructions and abide by such conditions as may be stipulated by both the nominating Government and the Japanese Government in respect of the course,
- (6) to observe the rules and regulations of the program implementing partners to provide the program or establishments,
- (7) not to engage in political activities, or any form of employment for profit,
- (8) to discontinue the program, should the participants violate the Japanese laws or JICA's regulations, or the participants commit illegal or immoral conduct, or get critical illness or serious injury and be considered unable to continue the course. The participants shall be responsible for paying any cost for treatment of the said health conditions except for the medical care stipulated in (3) of "3.Expenses", "Administrative Arrangements",
- (9) to return the total amount or a part of the expenditure for the KCCP depending on the severity of such violation, should the participants violate the laws and ordinances,
- (10) not to drive a car or motorbike, regardless of an international driving license possessed,
- (11) to observe the rules and regulations at the place of the participants' accommodation, and
- (12) to refund allowances or other benefits paid by JICA in the case of a change in schedule.



Administrative Arrangements

1. Organizer (JICA Center in Japan)

- (1) **Center:** JICA Hokkaido (Sapporo)
 - (2) **Program Officer:** Ms. Shinjee Bolorchimeg (Shinjee.Bolorchimeg@jica.go.jp)
-

2. Implementing Partner

- (1) **Name:** Rakuno Gakuen University
 - (2) **URL:** <http://en.rakuno.ac.jp>
-

3. Expenses

The following expenses in Japan will be provided by JICA

- (1) Allowances for meals, living expenses and stopover.
- (2) Expenses for study tours (basically in the form of train tickets).
- (3) Medical care for participants who become ill after arriving in Japan (the costs related to pre-existing illness, pregnancy, or dental treatment are not included).
- (4) Expenses for program implementation, including materials.
- (5) For more details, please see “III. ALLOWANCES” of the brochure for participants titled “KENSU-IN GUIDE BOOK,” which will be available from JICA Website.

*Link to JICA HP (English/French/Spanish/Russian):

https://www.jica.go.jp/english/our_work/types_of_assistance/tech/accept

4. Pre-departure Orientation

A pre-departure orientation will be held at respective country's JICA office (or the Japanese Embassy), to provide Participants with details on travel to Japan, conditions of the course, and other matters.



JICA Knowledge Co-Creation Program (Group and Region Focus)

REMOTE SENSING OF FOREST RESOURCES

Course Number: 202411703J001

Part I: Knowledge Co-Creation Program and Life in Japan	
English ver.	https://www.youtube.com/watch?v=SLurfKugrEw
Part II: Introduction of JICA Centers in Japan	
JICA Hokkaido (Sapporo)	https://www.jica.go.jp/sapporo/english/office/index.html

If the link of these URLs has expired, please access the URL below and search the necessary information from the key word.

<https://www.youtube.com/user/JICAChannel02>

5. Reference

PDF: KENSHU-IN GUIDE BOOK

For more detailed terms and conditions

https://www.jica.go.jp/english/our_work/types_of_assistance/tech/acceptance/training/c8h0vm0000011i07-att/guide_en.pdf



Video: JICA Predeparture Briefing

For more information on life in Japan and KCCP

<https://www.youtube.com/watch?v=SLurfKugrEw>



Website: JICA

English/French/Spanish/Russian

https://www.jica.go.jp/english/our_work/types_of_assistance/tech/acceptance/training/index.html



JICA Knowledge Co-Creation Program (Group and Region Focus)

REMOTE SENSING OF FOREST RESOURCES

Course Number: 202411703J001

PDF: Facility Guide for JICA Hokkaido Center English/French/Spanish/Russian

<https://www.jica.go.jp/sapporo/english/office/about/facilities.html>



Video: Welcome to JICA Hokkaido Introduction of JICA Hokkaido

<https://youtu.be/ZTw5Dtcu8o4>



JICA Knowledge Co-Creation Program (Group and Region Focus)

REMOTE SENSING OF FOREST RESOURCES

Course Number: 202411703J001

Annex

Inception Report

Each Participant is requested to prepare the Inception Report on the following issues and submit it to JICA Hokkaido along with the application form **by April 10, 2025**. The report should be typewritten in English on A4 size paper (21 cm x 29.5 cm) in single spacing at maximum of 10 pages.

This Report shall be used for selection of participants.

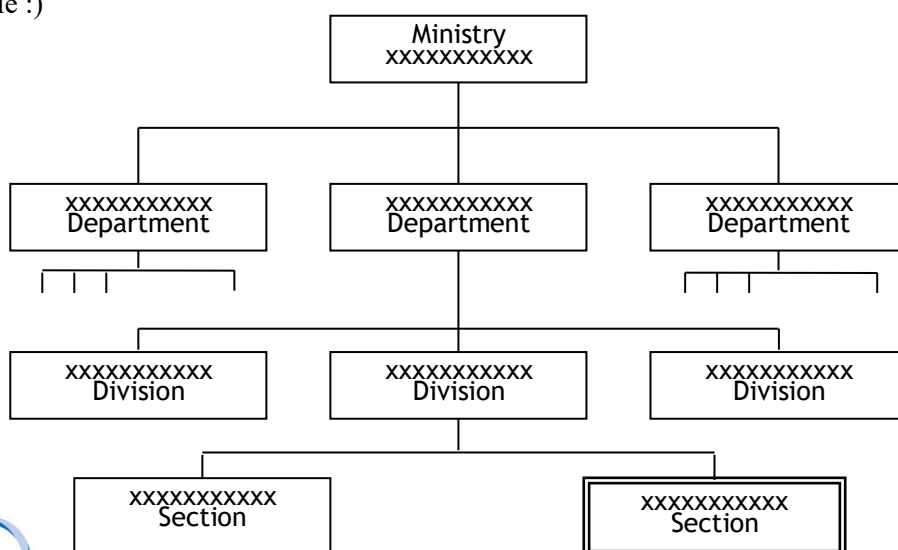
NOTE: Participants are asked to deliver a 15-minute presentation at the beginning of the program, discussing the current state of forestry management in their respective countries. It is recommended to use Microsoft PowerPoint for the presentation.

1. Basic information

Name	
Country	
Organization	
Position	
Period	From _____ to _____
Outline of duties	

2. Outline of the participant's Organization

(Example :)



JICA Knowledge Co-Creation Program (Group and Region Focus)

REMOTE SENSING OF FOREST RESOURCES

Course Number: 202411703J001

3. Describe the current condition and/or historical trends of forests and forest management in the applicant's country, using specific figures and data to explain the situation in relation to the following indicators:

(Choose at least 2 indicators from the following for the description)

- ① Area and percentage of forest-by-forest ecosystem types
- ② Area and percentage of forest specifically designated for conservation
- ③ Area, percentage and growing stock of plantations by species
- ④ Value and volume of production of wood, wood products and non-wood products
- ⑤ Status of the legal and institutional framework for forest planning, policy development and coordination with relevant sectors
- ⑥ Status of forest inventory, assessment and monitoring

If the national data is not available for these indicators, provincial data or project level data can also be used.

4. Current stage of remote sensing for forest resource management in the applicant's country.

5. Problems/ constraints on the development of remote sensing in the applicant's country

(Itemize and describe the three main issues that the applicant directly faces)

6. On-going efforts to specifically cope with the problems mentioned in 5. above (If any)

7. The applicant's role in development and application of remote sensing in the country

8. What is your personal challenge that you want to solve through this training program?

9. The applicant's experiences about remote sensing and GIS software specifically

	QGIS	ArcGIS	ERDAS IMAGINE	Ecognition	ENVI	Google Earth Engine	GPS	Others
Version:								
Experience: (How often are you using this in your current duties?)								

Purpose: (What do you use this for?)								
Satellite data: (Describe specific data which you have analyzed)								

10. The applicant's knowledge and interest about remote sensing, GIS and GPS

Items	Detail	Example	Please scale your knowledge by 1 ~ 4 1: I don't know it 2: I know it a little 3: I know it 4: I know it very well	Please check ○ the boxes which you are interested. <i>*You could check more than one</i>
*Example	○○○○	○○○○	1	○
	○○○○	○○○○	3	
Measuring	Aerial photos using a drone			
	Collecting field data using mobile device	GPS, smartphone, tablet etc.		
Storing	Downloading satellite imagery and GIS data.			
	Create GIS data	Georeferencing paper maps and tracing them		
	Drone data processing	Ortho rectified mosaic photo and making 3D model		
	Pre/post processing optical satellite images	clipping / mosaicking / reprojecting / layer stacking satellite imagery		
		Calibration (calculating Reflectance value, atmospheric/topographic correction)		
	Pre/post processing microwave satellite images	Calibration (calculating db value (sigma, beta, gamma naught))		
Analyzing	Calculating index	NDVI, NDSI, NDWI		
	Classification (Unsupervised, Supervised classification)	Pixel based classification		
		Object based classification		
	Change detection			
	Spatial data analysis with GIS	Carbon stock mapping		
		Mapping with statistical models		
Coding based remote sensing or	Google Earth Engine			
	Other programing	R, Python, etc.		

GIS	language			
-----	----------	--	--	--

11. Knowledge or skills which the applicant intends to acquire from this training program.

(example: knowledge of technical issues about REDD+, skills of using remote sensing software for change detection of landuse in your site)

12. In the applicant's country, what kind of effort/ action for REDD+ can be made?

(example: law, policy, finance and aid)

13. Plans/ projects which you are likely to be involved in your country after completing the training, if any.

14. Describe the target area which you want to deal with in your action plan in concrete terms. *Please attach the Map below

Area Name:

Longitude and Latitude:



JICA Knowledge Co-Creation Program (Group and Region Focus)

REMOTE SENSING OF FOREST RESOURCES

Course Number: 202411703J001

MAP:



JICA Knowledge Co-Creation Program (Group and Region Focus)

REMOTE SENSING OF FOREST RESOURCES

Course Number: 202411703J001

For Your Reference

JICA and Capacity Development

Technical cooperation is people-to-people cooperation that supports partner countries in enhancing their comprehensive capacities to address development challenges by their own efforts. Instead of applying Japanese technology per se to partner countries, JICA's technical cooperation provides solutions that best fit their needs by working with people living there. In the process, consideration is given to factors such as their regional characteristics, historical background, and languages. JICA does not limit its technical cooperation to human resources development; it offers multi-tiered assistance that also involves organizational strengthening, policy formulation, and institution building.

Implementation methods of JICA's technical cooperation can be divided into two approaches. One is overseas cooperation by dispatching experts and volunteers in various development sectors to partner countries; the other is domestic cooperation by inviting participants from developing countries to Japan. The latter method is the Knowledge Co-Creation Program, formerly called Training Program, and it is one of the core programs carried out in Japan. By inviting officials from partner countries and with cooperation from domestic partners, the Knowledge Co-Creation Program provides technical knowledge and practical solutions for development issues in participating countries.

The Knowledge Co-Creation Program (Group & Region Focus) has long occupied an important place in JICA operations. About 400 pre-organized courses cover a wide range of professional fields, ranging from education, health, infrastructure, energy, trade and finance, to agriculture, rural development, gender mainstreaming, and environmental protection. A variety of programs is being customized by the different target organizations to address the specific needs, such as policy-making organizations, service provision organizations, as well as research and academic institutions. Some programs are organized to target a certain group of countries with similar developmental challenges.

Japanese Development Experience

Japan, as the first non-Western nation to become a developed country, built itself into a country that is free, peaceful, prosperous and democratic while preserving its tradition. Japan will serve as one of the best examples for our partner countries to follow in their own development.

From engineering technology to production management methods, most of the know-how that has enabled Japan to become what it is today has emanated from a process of adoption and adaptation, of course, has been accompanied by countless failures and errors behind the success stories.

Through Japan's progressive adaptation and application of systems, methods and technologies from the West in a way that is suited to its own circumstances, Japan has developed a storehouse of knowledge not found elsewhere from unique systems of organization, administration and personnel management to such social systems as the livelihood improvement approach and governmental organization. It is not easy to apply such experiences to other countries where the circumstances differ, but the experiences can provide ideas and clues useful when devising measures to solve problems.

JICA, therefore, would like to invite as many leaders of partner countries as possible to come and visit us, to mingle with the Japanese people, and witness the advantages as well as the disadvantages of Japanese systems, so that integration of their findings might help them reach their developmental objectives.



JICA Knowledge Co-Creation Program (Group and Region Focus)

REMOTE SENSING OF FOREST RESOURCES

Course Number: 202411703J001

This information pertains to one of the JICA Knowledge Co-Creation Programs (Group & Region Focus) of the Japan International Cooperation Agency (JICA) implemented as part of the Official Development Assistance of the Government of Japan based on bilateral agreement between both Governments.



Correspondence

For enquiries and further information, please contact the JICA office or Embassy of Japan.

Further, address correspondence to:

JICA Hokkaido Center (JICA Hokkaido (Sapporo)

Address: Minami 4-25, Hondori 16-chome, Shiroishi-ku , Sapporo,Hokkaido, 003-0026, Japan

TEL: +81-11-866-8393 FAX: +81-11-866-8382

("81" is the country code for Japan, and "11" is the local area code