



# Resettlement Action Plan (RAP) Report



## Preparatory Survey for the Project of Construction of Natete Bridge in the Republic of Mozambique

**Prepared by:**

Enviestudos, Lda  
Consultoria Ambiental & Serviços  
Rua Viana da Mota N72, Maputo, Mozambique

**As Subcontractor by**

Katahira & Engineers International  
14-1, Shintomi, Chuo-Ku, Tokyo 104-0041, Japan





**Volume I: FINAL VERSION**  
**Maputo, January 2026**

## **DOCUMENT DESCRIPTION**

### **Document Title**

Resettlement Action Plan (RAP) Report

Preparatory Survey for the Project of Construction of Natete  
Bridge in the Republic of Mozambique

### **Prepared for:**

National Roads Administration (ANE)  
Avenida de Moçambique, nº 1225, CP 403.  
Tel.: +258-21476163 Luís Cabral  
Maputo, Republic of Mozambique

### **Prepared by:**

Enviestudos, Lda.  
Consultoria Ambiental E Serviços  
Rua Viana Da Mota No 72, 1º Andar, Cidade De Maputo

### **As Subcontractor by:**

Katahira & Engineers International  
-14-1, Shintomi, Chuo-Ku, Tokyo 104-0041, Japan

**Maputo, January 2026**

<b>CONTENTS LIST OF SYMBOL</b> .....	vi
<b>LIST OF ABBREVIATIONS</b> .....	vi
<b>NON-TECHNICAL SUMMARY</b> .....	i
<b>1 INTRODUCTION</b> .....	1
<b>1.1 Context</b> .....	1
<b>1.2 Project Proponent</b> .....	2
<b>1.3 Project Environmental Consultant</b> .....	2
<b>1.4 Objectives of the RAP</b> .....	2
<b>1.5 Methodology</b> .....	3
<b>2 PROJECT DESCRIPTION</b> .....	4
<b>2.1 Location and Project Area of Influence</b> .....	4
<b>2.2 Project Activities</b> .....	4
<b>2.2.1 Planning and Design Phase</b> .....	4
<b>2.2.2 Pre-Construction Phase</b> .....	5
<b>2.2.3 Construction Phase</b> .....	5
<b>2.2.4 Auxiliary Infrastructure and Inputs</b> .....	7
<b>2.2.5 Access Roads</b> .....	8
<b>2.3 Current Land Use Patterns within the Project Area of Influence (PAI)</b> .....	9
<b>2.4 Project Alternatives</b> .....	10
<b>2.4.1 Location Alternatives</b> .....	10
<b>2.4.2 No-Project Alternative</b> .....	12
<b>2.4.3 With-Project Alternative</b> .....	12
<b>2.4.4 Interventions Under the Selected Option</b> .....	12
<b>3 LEGAL AND REGULATORY FRAMEWORK</b> .....	13
<b>3.1 National Legal Framework</b> .....	13
<b>3.2 JICA Guidelines (2022)</b> .....	14
<b>3.3 Gaps between Local Laws on Expropriation and Resettlement and World Bank and JICA Standards, and the Mechanism to Bridge Them</b> .....	16
<b>4 DELINEATION OF THE AFFECTED AREA</b> .....	23
<b>4.1 Direct Influence Area (DIA)</b> .....	23
<b>5 RESULTS OF THE CENSUS AND SOCIOECONOMIC PROFILE OF AFFECTED PERSONS</b> .....	24
<b>5.1 Socioeconomic Census</b> .....	24
<b>5.2 Land Use</b> .....	27
<b>5.2.1 Left Bank (Bank A)</b> .....	27
<b>5.2.2 Right Bank (Bank B)</b> .....	28
<b>6 IMPACT ASSESSMENT AND ELIGIBILITY CRITERIA</b> .....	31
<b>6.1 Impact Assessment</b> .....	31

6.1.1	Impact Due to Loss of Land Use .....	31
6.1.2	Impact on Crops and Trees .....	31
6.1.3	Right to Compensation for Loss of Crops and Trees .....	32
7	<b>COMPENSATION AND RESETTLEMENT STRATEGIES</b> .....	34
7.1	Compensation Calculation .....	34
8	<b>PUBLIC CONSULTATION AND PARTICIPATION PLAN</b> .....	35
8.1	Introduction .....	35
8.2	Methodology for Public Consultation .....	35
8.3	Planning and Prior Dissemination .....	35
8.4	Organization of the Public Sessions .....	36
9	<b>GRIEVANCE REDRESS MECHANISM (GRM)</b> .....	37
10	<b>MONITORING AND EVALUATION PLAN</b> .....	38
10.1	Monitoring and Evaluation Indicators .....	38
10.2	Institutions Involved and Their Responsibilities in the RAP .....	38
11	<b>IMPLEMENTATION SCHEDULE</b> .....	40
12	<b>CONCLUSIONS AND RECOMMENDATIONS</b> .....	44
12.1	Conclusions .....	44
12.2	Recommendations .....	45
13	<b>REFERENCES</b> .....	46

## LIST OF FIGURES

Fig. 2.1 - Project Location Map.....	4
Fig. 2.2 - Construction Method for the Natete River Bridge.....	6
Fig. 2.3 - Cross-Section of the Bridge Structure .....	6
Fig. 2.4 - Layout of the Construction Yard.....	8
Fig. 2.5. Layout of Bypass Roads and Construction Yard. ....	9
Fig. 4.1 - Illustration of the areas covered by the project.....	23
Fig. 4.2 - Both sides affected shown on google map.....	24
Fig. 5.1 - PAPs with assets located in the Direct Influence Area. ....	25
Fig. 5.2 - Flooded farmland on the left bank of the bridge.....	28
Fig. 5.3 - Farmland with mixed crops on the right bank. ....	29
Fig. 5.4 - Fallow Field.....	29
Fig. 5.5 - Vacant land – probable area for construction camp installation .....	30

## LIST OF TABLES

Tab.2.1 - Comparison of Location Alternatives.....	11
Tab. 3.1 - Comparative – Gaps between Mozambique, World Bank (ESS5) and JICA .....	21
Tab. 5.1 - Results of the socioeconomic data .....	25
Tab. 5.2 – Sex, Age and occupations of the PAHs.....	26
Tab. 5.3 – Number of household members .....	26
Tab. 5.4 – Number of living infrastructures .....	26
Tab 6.1 - Lost properties (crops and trees).....	31
Tab 6.2 – Entitlement Matrix .....	32
Tab 7.1 - Compensation for Lost Properties .....	34
Tab. 10.1 – Institutions involved and their responsibilities in the RAP.....	38
Tab 11.1- RAP proposal implementation schedule.....	0

## LIST OF ANNEXES

Anex A: Socioeconomic Survey Form.....	i
Anex B; List of PAPs and other Relevant Information .....	v
Anex C: Table of Compensations.....	ix
Anex D: Announcement of the 1st CP in JN.....	xvi
Anex E: List of Participants of 1st PCM.....	xviii
Anex F: Announcement of the 2nd CP in JN.....	xix
Anex G: List of Participants.....	xxi

## LIST OF ABBREVIATIONS

AASHTO	American Association of State Highway and Transportation Officials
ANE	Administração Nacional de Estradas
RAP	Resettlement Action Plan
ARA	Administração Regional de Aguas
DUAT	Right to Use and Benefit from Land
ESS	Environmental and Social Study
GRM	Grievance Redress Mechanism
KBA	Key Biodiversity Area
SATCC	Africa Transport and Communications Commission
SES	Simplified Environmental Study
SPA	Servico Provincial do Ambiente
PAPs	Project Affected Persons
JICA	Japan International Cooperation Agency
TIPA	Tropical Important Plant Area
MQR	Mecanismo de Queixa e Reclamações
WB	World Bank
TIPA	Tropical Important Plant Area
PAI	Project Area Influence
PAP	Part Affected Person
DAA	Directly Affected Area
DIA	Direct Influence Area
PC	Public Consultation

## LIST OF SYMBOL

km	kilometer
m <sup>3</sup>	Cubic meter
kVA	Kilo Volt Amper
Hz	Hertz
m	meter
km/h	Kilometer per hour

## NON-TECHNICAL SUMMARY

### 1 Introduction and Project Overview

This document is the Resettlement Action Plan (RAP), developed for the Natete River Bridge reconstruction project. Its preparation is a legal and ethical requirement, designed to identify, assess, and mitigate the social impacts arising from the construction.

The existing bridge is in a critical state of degradation, causing logistical delays, high transport costs, economic losses for farmers and traders, and reduced road safety, isolating communities in emergencies. The new bridge, to be built at the current location to minimize new impacts, aims to restore safe connectivity and foster local development.

The project is an initiative of the Government of Mozambique, through the National Roads Administration (ANE), with funding from Japan, via the Japan International Cooperation Agency (JICA), ensuring the project complies with rigorous international environmental and social safeguard guidelines.

### 2 Affected People and Identified Impacts

Through a detailed socio-economic census and fieldwork, a small number of people directly affected by the construction activities were identified. A total of 6 Project Affected Households (PAHs) were registered. It is crucial to emphasize that the permanent physical relocation of any household or community is not planned. The impacts are localized, temporary, and reversible, focusing mainly on the temporary use of land for the construction yard and the temporary detour road.

The main impacts identified include the temporary loss of agricultural land (machambas), the loss of crops (such as maize, butter beans, and cassava) and fruit trees (such as mango, cashew, and avocado trees).

### 3 Compensation Strategy and Livelihood Restoration

The project is committed to ensuring that all affected persons are compensated fairly and in a timely manner, with the objective of restoring or improving their pre-project living standards. Compensation calculations were based on the Official Compensation Table of Nampula Province for the year 2023, ensuring transparency and compliance with national legislation.

Compensation covers the loss of crops, trees, and other plants, with the total estimated cost at 149,908.51 MZN (one hundred and forty-nine thousand, nine

hundred and eight Meticaís and fifty-one cents, a value that already includes a 10% contingency for unforeseen events.

It is important to note that all compensation payments will be made to the identified PAPs before the start of construction work on the ground, ensuring that no one suffers losses without due compensation.

#### **4 Community Participation and Grievance Mechanism**

To ensure transparency and inclusion, the RAP preparation process was accompanied by a robust public consultation plan. Two community consultation sessions were held: the first was carried out on August 22, 2025, to present the project, with 238 participants; the second on October 17, 2025, to present the findings of this resettlement plan, gathered about 56 participants. The sessions were announced in the "Notícias" newspaper and conducted in the local language (Emakwa), with the active participation of local authorities and community leaders.

In parallel, a Grievance Redress Mechanism (GRM) will be established, a free and accessible system that will allow any community member to raise questions, concerns, or formal complaints at any stage of the project. This mechanism, which will include a toll-free hotline and the involvement of community leaders as an alternative channel, will ensure that all issues are recorded and resolved promptly and fairly.

#### **5 Implementation, Conclusion, and Monitoring**

The successful implementation of this RAP will be a shared responsibility among several institutions. ANE will act as the project proponent, coordinating and supervising the entire process and ensuring the funding for compensation. The Ribáué District Government will play a crucial role in conflict mediation, validation of lists of affected people, and local mobilization.

**JICA will provide independent monitoring of compliance with its safeguard guidelines. Continuous monitoring of the process will ensure that compensation is paid in a timely manner, that the GRM functions effectively, and that the livelihoods of the PAHs are restored.**

In conclusion, the project is a vital infrastructure project for the region. This Plan ensures that the project moves forward responsibly and in a socially just manner, respecting the rights of the local population and ensuring that the long-term benefits—in terms of mobility, safety, and economic growth—are achieved alongside the protection of the well-being of citizens directly and temporarily affected by the construction work.

# 1 INTRODUCTION

## 1.1 Context

The Government of Mozambique (GoM), through the National Roads Administration (ANE), intends to reconstruct the bridge over the Natete River, located in Ribáuè District, Nampula Province, in response to its critical state of degradation caused by the lack of maintenance and the increasing incidence of extreme climatic events recorded in recent years.

These factors have significantly affected the bridge's functionality, resulting in logistical delays, higher transportation costs, economic losses for farmers, traders, and transporters, as well as reduced road safety and community isolation during emergency situations.

The reconstruction project of the Natete River bridge is financed by the Government of Japan, with technical assistance from the JICA. To carry out the environmental and social studies, Katahira International Group was contracted, which in turn subcontracted Enviestudos, Lda — a Mozambican company accredited by the Ministry of Agriculture, Environment and Fisheries — to conduct the environmental and social impact assessment of the project.

As part of the socio-environmental studies, the Environmental Licensing Process was initiated with the Provincial Environment Service (SPA) of Nampula, in compliance with national environmental legislation. The activity was classified as Category B, according to Decree No. 54/2015 of 31 December, requiring the preparation of a Simplified Environmental Study (SES).

During the process, it was verified that project implementation may involve impacts on people, assets, and/or livelihoods, thus requiring the development of an Resettlement Action Plan (RAP), in accordance with Decree No. 31/2012 of 8 August (Regulation on the Resettlement Process Resulting from Economic Activities) and the JICA Environmental and Social Considerations Guidelines (2022).

In this context, the preparation of this RAP aims to identify and assess the social impacts on affected persons and to define fair, applicable, and effective compensation and livelihood restoration measures. The plan was developed in line with Mozambican laws, regulations, and decrees governing land access, use, and allocation for public-interest projects, complemented by the JICA Guidelines for Environmental and Social Considerations.

## 1.2 Project Proponent

The Natete bridge construction project is proposed by the National Roads Administration (ANE). ANE's offices are located at Avenida de Moçambique nº 1225, CP 403, Bairro Luís Cabral, Maputo City. Contact: +258-21476163. Email: geral@ane.gov.mz

## 1.3 Project Environmental Consultant

Within the scope of the Consultancy Services for the reconstruction of the bridge over the Natete river, a Contract was signed between ANE and Katahira International Group of Japan to carry out the engineering and socio-environmental studies. Katahira International Group, in turn, subcontracted Enviestudos, Lda. to carry out the EAS and the Resettlement Action Plan (PAR) for the project.

Enviestudos, Lda. is an environmental consulting company registered in the country, with NUIT 400298505, accredited by the Ministry of Agriculture, Environment and Fisheries (MAAP) as an Environmental Consultant in the country since 2011, providing environmental solutions for different public and private projects. Enviestudos' facilities are located in Bairro KaMfumu, Rua Viana da Mota no. 72, 1º A, Tel: +258-82/84-3289330. Email: enviestudosconsultores@gmail.com, Maputo City.

The technical team is presented in the Table 1-1, indicating the relevant qualifications, and main functions in the RAP process.

## 1.4 Objectives of the RAP

The RAP forms part of the environmental and social studies to be carried out prior to the implementation of a development project. Its main objective is to identify and analyze the socioeconomic impacts on people and assets affected by the proposed project.

Specifically, the RAP seeks to: Conduct a socioeconomic diagnosis of the project's direct area of influence; Identify and characterize affected persons, assets, and livelihoods; Assess and value affected assets and estimate the total compensation cost; Propose compensation measures and social support to ensure livelihood and living standard restoration; and Establish implementation, monitoring, and follow-up mechanisms for the resettlement process, in accordance with national legislation and JICA Guidelines.

## 1.5 Methodology

The preparation of this RAP followed an integrated approach, combining literature review, analysis of relevant national laws and regulations, and reference to the JICA Guidelines (2022).

Field activities were conducted to collect primary data and identify potentially affected areas. The study area was delineated considering a 50-meter buffer from each riverbank, covering an approximate length of 340 meters, encompassing the bridge and its immediate access areas.

After delineation, potentially affected persons (PAPs) were invited and interviewed as part of the asset inventory and socioeconomic survey (see Annex A). It was found that the area is predominantly used for subsistence agriculture, with cassava, maize, and beans being the main crops. Additionally, several fruit trees and economically valuable plants were also identified that may be affected during the construction works.

## 2 PROJECT DESCRIPTION

### 2.1 Location and Project Area of Influence

The bridge over the Natete River is located approximately 7 km from the Ribaué District village, along the N13 national road. Figure 2.1 shows the location of the bridge.

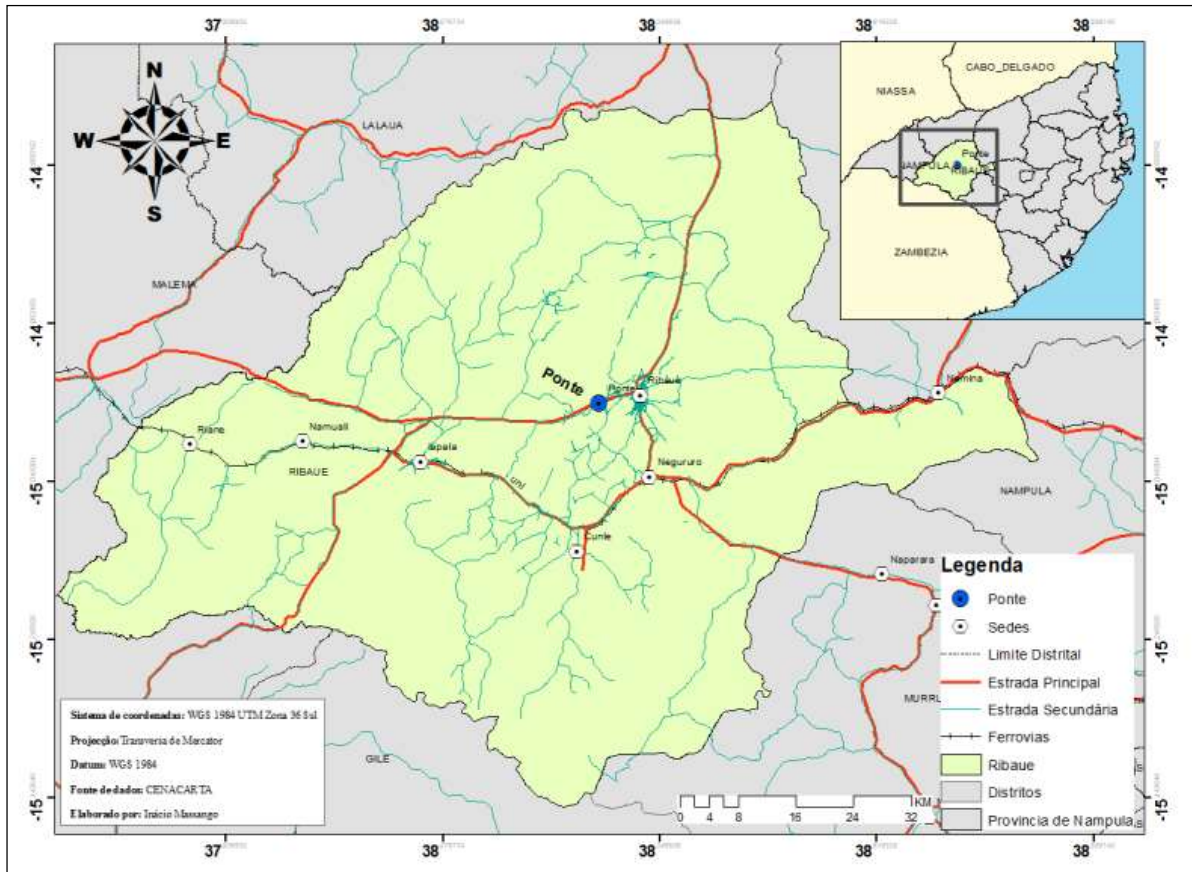


Fig. 2.1 - Project Location Map

### 2.2 Project Activities

The project implementation consists of several phases and specific activities, as described below.

#### 2.2.1 Planning and Design Phase

The planning and design phase includes a set of essential technical activities that precede the construction phase. During this stage, topographic, hydrological, and geotechnical studies are completed to provide the technical basis for structural design. Detailed engineering design is then developed, including technical drawings, structural calculations, specifications, descriptive reports, and cost estimates.

Construction alternatives are also assessed to ensure technical, economic, and environmental feasibility. The final project incorporates environmental and social mitigation measures, ensuring a safe, sustainable design that complies with applicable standards.

## 2.2.2 Pre-Construction Phase

The pre-construction phase involves defining the contractor yard, access routes, traffic detours, and provisional systems for water and energy supply. From a legal and administrative standpoint, this phase focuses on obtaining all necessary permits and authorizations. A key activity is the submission of the Environmental and Social Study (ESS) to the Nampula SPA and the subsequent issuance of the Environmental Installation License, an essential requirement to begin construction works.

In parallel, land-use rights (DUATs) are regularized for areas affected by the project, and other sectoral permits are obtained — such as from the Regional Water Administration (ARA-Norte) for water abstraction and the provincial energy department for generator operation.

The phase concludes with the contractor's logistical mobilization, recruitment of local labor, transportation of equipment and materials, and site preparation, including controlled clearing, vegetation removal, and installation of the construction yard and safety signage.

## 2.2.3 Construction Phase

The new bridge will be 40 m long — sufficient to accommodate the maximum planned flow (180 m<sup>3</sup>/s) — and 11 m wide. The span length will be equal to or greater than that of the existing bridge (40 m).

The construction phase corresponds to the period of physical execution of the works, involving the implementation of all structural and complementary components as defined in the executive project. It begins with earthworks and access road preparation to ensure proper ground leveling and adequate conditions for equipment and material movement.

This is followed by excavation for the bridge foundations, carried out according to geotechnical specifications, and the construction of riprap and riverbank protection works to stabilize the riverbed and prevent erosion.

Subsequently, concrete operations for the foundations, piers, and deck are executed — central stages in ensuring the bridge's strength and durability. In parallel, drainage and paving works for the access roads are carried out to ensure proper stormwater management and functional integration of the bridge into the existing road network.

The phase concludes with the installation of vertical and horizontal road signage and metal guardrails, essential elements for the operational safety of the infrastructure.

The construction method adopted will be bored pile foundations. This method — also known as drilled or cast-in-place piles — is widely used for deep foundations, particularly in bridges, viaducts, and heavy structures. Its advantages include high load-bearing capacity, low noise and vibration, and flexibility in diameter depending on soil type and load requirements.

The piles are driven into the ground by applying pressure at the top, oscillation or rotation with impact, or vibration. The material inside the casing is mechanically removed, although rotary drilling can also be used in certain geological formations. The reconstruction method for the proposed bridge is illustrated in Figure 2.2, and the cross-section of the bridge is shown in Figure 2.3.

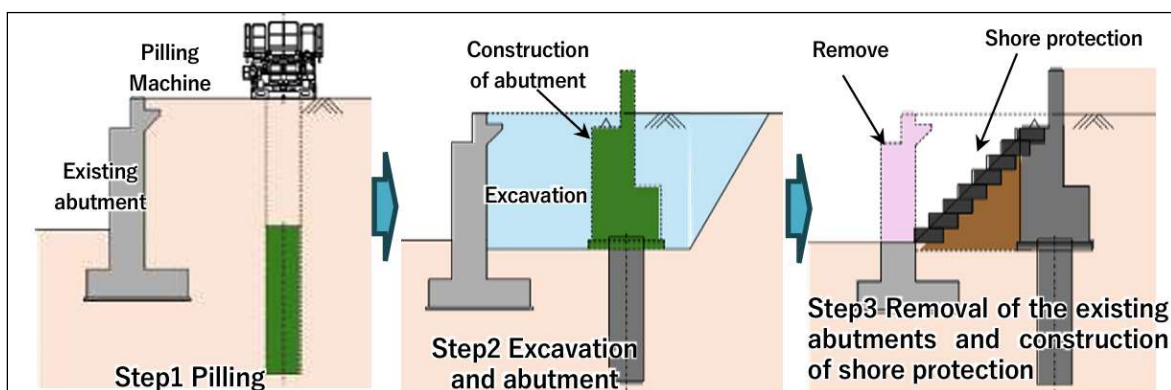


Fig. 2.2 - Construction Method for the Natete River Bridge

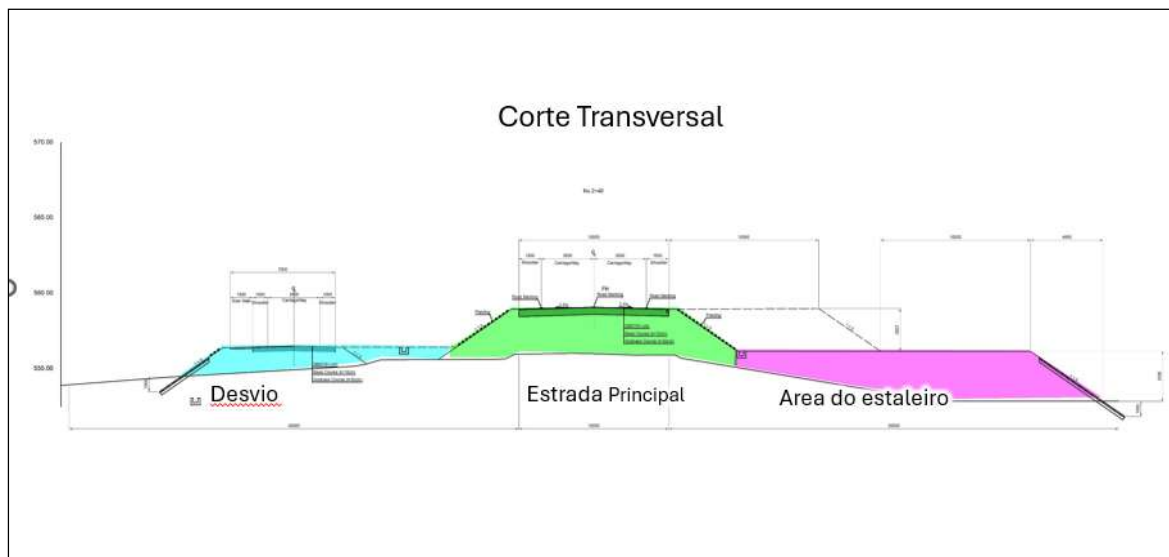


Fig. 2.3 - Cross-Section of the Bridge Structure

Cofferdams will be constructed to create a dry working area (by temporary water retention) required for pile installation and pier-cap construction. The cofferdam will be reinforced with alternating layers of sand fill, geotextile, and rock, extending approximately 1.0 m above the maximum water level.

Once the foundation stratum or design load limit is reached, steel reinforcement will be inserted and the shaft filled with high-strength concrete. Excavated material will be safely disposed of — either transported by barge or, if quality allows, deposited into the river after assessment.

Using cofferdams, after pile installation, the pile cap will be cast in situ. Alternatively, precast concrete forms may be floated to the installation site and lowered onto the piles, where they will be filled with concrete to complete the cap.

In shallow areas near the riverbanks and floodplains, temporary embankments may be constructed to protect pile installation. The pavement structure will comprise a semi-rigid system: a double surface treatment, a cement-stabilized base layer (5% cement), and a cement-stabilized sub-base layer (3% cement).

Excavations of significant scale will be required for new piers behind the existing ones, with temporary waterproofing measures in place. Part of the existing bridge abutment will be reused as a temporary structure, reducing costs, excavation volume, and environmental impacts.

The final abutment design will depend on the geotechnical investigation results. In some areas, foundations may rest directly on shallow bedrock; however, driven piles are recommended to ensure structural stability near excavation zones. To reduce reconstruction costs, the option of an integral or supported structure will be considered. Regarding the number of spans, a single-span configuration is currently preferred over a double-span alternative.

#### **2.2.4 Auxiliary Infrastructure and Inputs**

A construction yard (camp site) will serve as a temporary facility to support bridge reconstruction works. Main components will be defined by the contractor. The location of the construction yard is shown in Figure 2.4, ensuring compliance with the minimum safety distance from the Natete River and other environmentally sensitive areas.



Fig. 2.4 - Layout of the Construction Yard

At project completion, the area will be rehabilitated in accordance with the Environmental Restoration Plan.

### 2.2.5 Access Roads

Access routes will be opened, including a bypass road, to maintain mobility and site access during construction. These roads will facilitate traffic detours and safe circulation of people, equipment, and materials.

Planned works include:

- Opening a temporary bypass around the damaged bridge (220–270 m long);
- Compaction and leveling using local stone materials;
- Installation of temporary road signage;
- Construction of small culverts where drainage lines cross;
- Slope and margin reinforcement in erosion-prone zones.

The final alignment will be refined through detailed topographic surveys, avoiding cultivated areas and minimizing native vegetation removal and interference with sensitive habitats.

Upon completion of the works, all installations and/or areas affected by the project that cannot be reused or adapted to possible future use must be rehabilitated in accordance with the Environmental Restoration Plan. In the event of future use of the installations and/or related areas, it must be supported by technical and environmental feasibility studies.

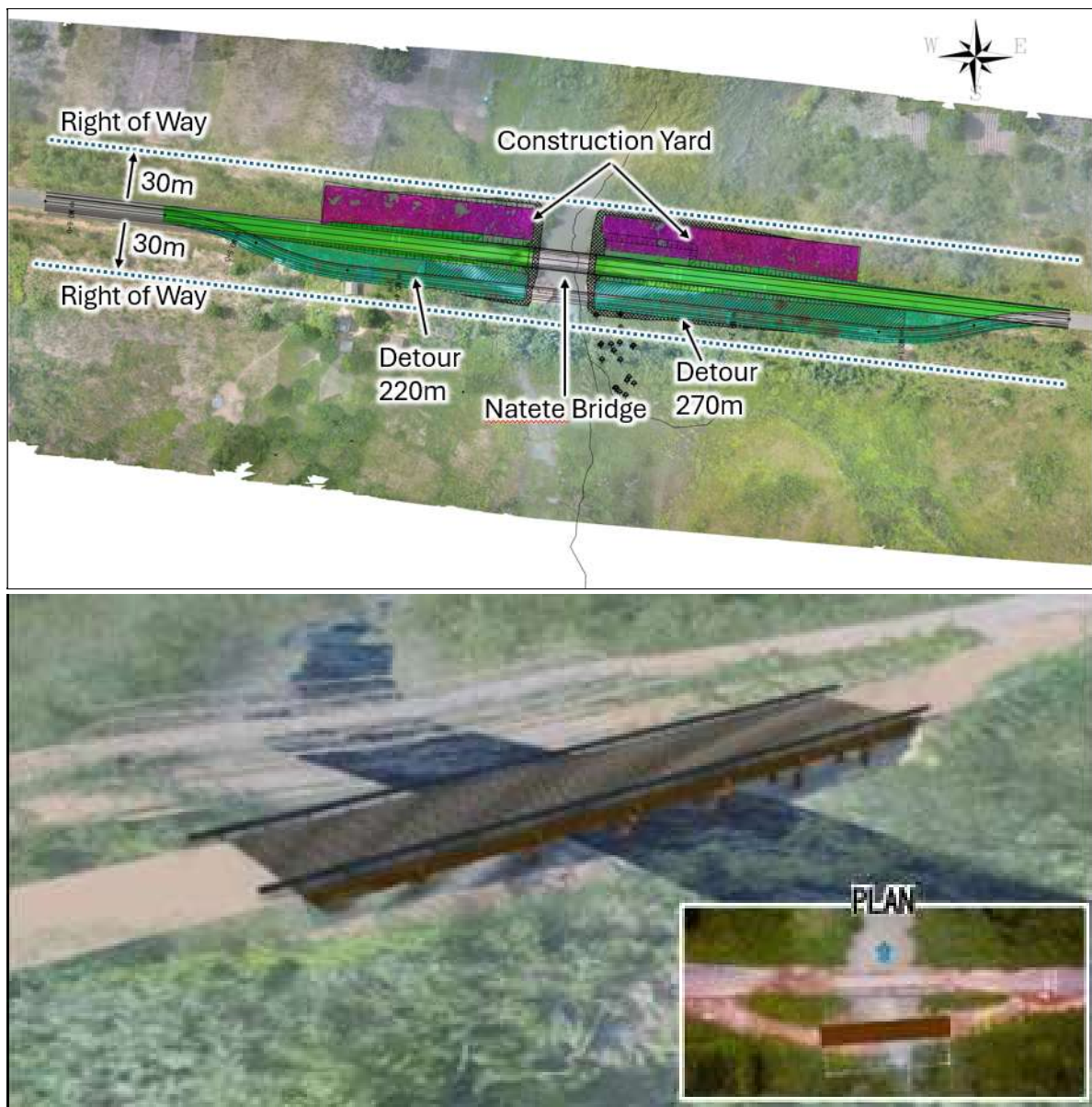


Fig. 2.5. Layout of Bypass Roads and Construction Yard.

### 2.3 Current Land Use Patterns within the Project Area of Influence (PAI)

Land use within the PAI is primarily subsistence and commercial agriculture, covering more than 70% of the productive area. Main crops include cassava, maize, beans, peanuts, sweet potatoes, vegetables (tomatoes, cabbage), and cash crops such as cotton and tobacco.

Agriculture is practiced in upland fields (cleared miombo woodland) and fertile lowlands, using rudimentary irrigation techniques.

Natural forests and vegetation (miombo and mountain forests) — especially in Mount Ribáué and Mount M’paluwe — host endemic species and provide fuelwood,

medicinal plants, wild fruits, and timber for construction and charcoal production. Land is also used for livestock grazing, particularly goats, cattle, pigs, and poultry and others.

The district contains biodiversity-rich conservation areas. Mount Ribáuè is recognized as both a Tropical Important Plant Area (TIPA) and a Key Biodiversity Area (KBA), critical for biodiversity conservation and rare habitats.

Land is also occupied by human settlements and infrastructure, mainly schools, health centers, markets, and churches, expanding linearly along the district main roads.

Water resources are used for irrigation, domestic supply (boreholes, wells, springs), and livestock watering. Forest resources provide energy (fuelwood), construction materials, and non-timber products such as honey, mushrooms, wild fruits, and medicinal herbs.

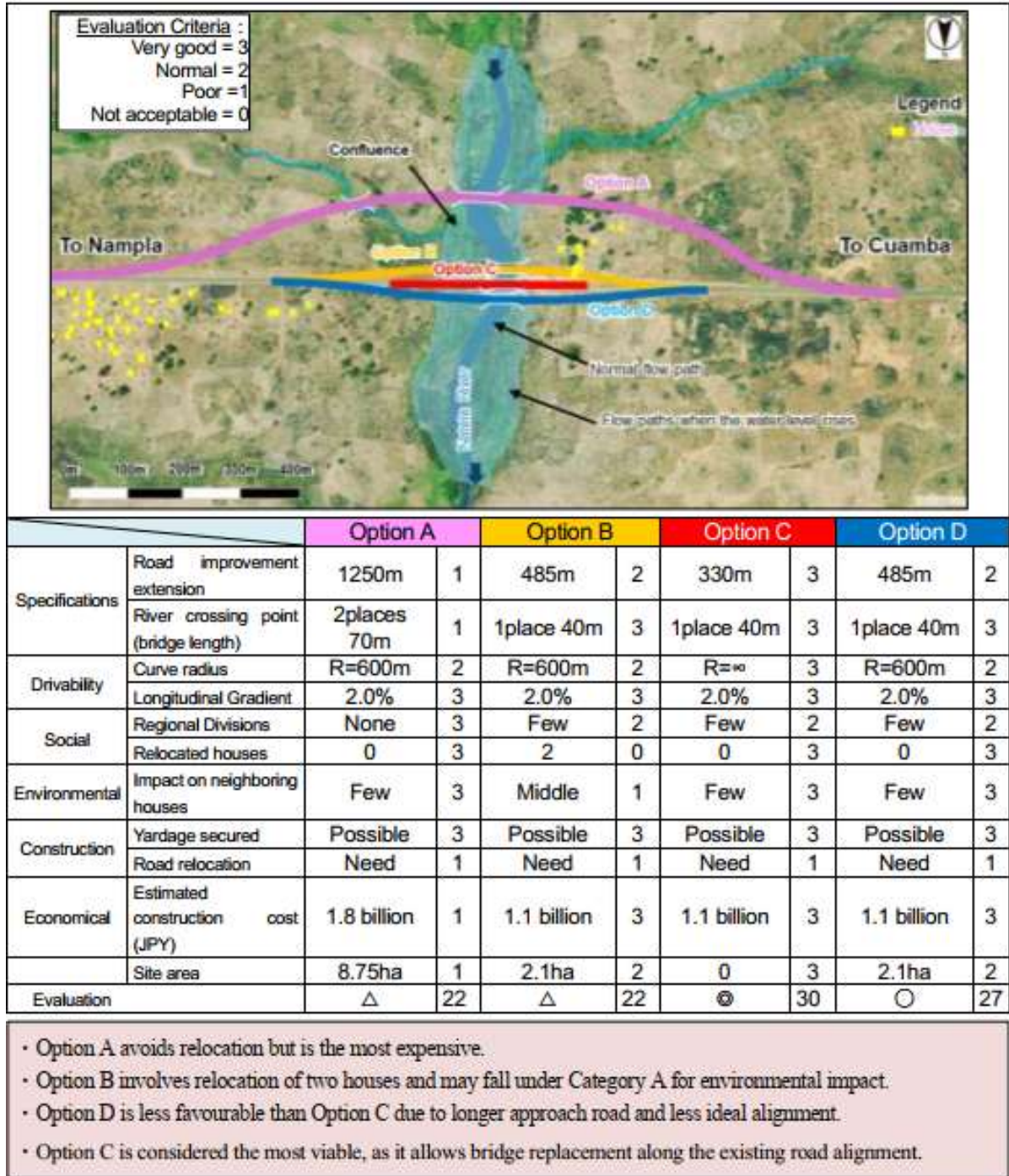
Subsistence hunting (unlicensed) persists in forested areas, mainly targeting birds, small mammals, and reptiles.

## **2.4 Project Alternatives**

### **2.4.1 Location Alternatives**

Regarding the location alternatives, four distinct options (A, B, C, and D) were analyzed, and Alternative C — which involves reconstruction at the current site — was selected (Table 2.1).

Tab.2.1 - Comparison of Location Alternatives



This option proved to have the lowest overall environmental and social impact, as it makes use of an already existing and highly anthropized corridor, thereby avoiding the opening of new routes in sensitive areas and minimizing the need for resettlement and the loss of productive agricultural land.

## 2.4.2

### 2.4.2 No-Project Alternative

The no-project alternative consists of maintaining the current situation, that is, not reconstructing the bridge in question. This implies that no engineering interventions would be carried out, leaving the crossing limited to improvised solutions (e.g., detours, fords, temporary bridges).

Failure to implement the proposed project would hinder the development potential of the districts directly affected, possibly leading to the diversion of investments to other regions and resulting in increased travel times for the transport of goods and people.

Although this alternative avoids the direct environmental impacts associated with construction, it would lead to significantly negative social and economic consequences, especially in the context of regional mobility dependence, fragile local infrastructure, and high climate vulnerability. Therefore, the no-project alternative is not viable from the perspective of sustainable local development, nor is it aligned with the government's commitments to territorial inclusion, rural poverty reduction, and climate resilience.

### 2.4.3 With-Project Alternative

The option based on the reconstruction of the infrastructure at the current bridge site, maintaining the existing road alignment and adopting a composite structure of precast concrete and concrete beams with bored pile foundations, represents the only technically, environmentally, and socially viable solution. It provides durability, low maintenance, and long-term safety.

Its implementation ensures the reinforcement of strategic local and regional infrastructure, compliance with national development and connectivity policies, and a direct contribution to reducing climate and social vulnerability.

### 2.4.4 Interventions Under the Selected Option

The selected option comprises a set of physical and social interventions. The main intervention will consist of the construction of the bridge infrastructure, including foundations, piers, deck, access roads, and protection work (riprap and retaining walls).

Complementary interventions include the construction or rehabilitation of road access to the bridge, stormwater drainage, vertical and horizontal signage, and the implementation of an Environmental and Social Management Plan throughout all project phases. This includes community communication programs, grievance management, and monitoring activities.

### 3 LEGAL AND REGULATORY FRAMEWORK

The preparation of the **RAP** strictly followed national legislation and the considerations set forth in the **JICA Guidelines for Environmental and Social Considerations**. This chapter describes the legal norms and regulations applicable to the present RAP.

#### 3.1 National Legal Framework

**Constitution of the Republic of Mozambique (2004, revised in 2018):** The Constitution of the Republic of Mozambique (2004) recognizes land as the property of the State. The right to its use and benefit (DUAT) is granted to individuals or legal entities for social or economic purposes. It also protects rights acquired by inheritance or occupation, ensuring that in cases of expropriation, affected citizens are fairly compensated.

**Land Law (Law No. 19/97 of 1 October):** This law establishes the principles related to land use rights, customary rights, and the procedures for acquiring title for individual and community benefit. It promotes a participatory consultation process that recognizes the right of communities and individual members to claim and hold land titles. More specific provisions related to resettlement are detailed in the Land Law Regulation described below.

**Decree No. 66/98 — Regulation of the Land Law:** This regulation provides the foundations for defining access rights, usage rules, and procedures for acquiring land title by communities and individuals. It reinforces the principle that land is State property and stipulates that when the State needs to use land occupied by communities or individuals, they are entitled to fair compensation and adequate resettlement.

The regulation requires that community consultations be conducted before granting land to investors to ensure there are no conflicts and that community rights are respected. Regarding crops, it establishes that compensation values are defined in tables issued by provincial agricultural authorities.

**Decree No. 31/2012 of 8 August — Regulation on the Resettlement Process Resulting from Development Activities:** This decree establishes basic rules and principles governing the resettlement process resulting from public or private economic activities. It gives priority to district governments in approving resettlement plans, based on the opinion of the land-use planning authority and in consultation with other key sectors such as agriculture, local administration, public works, and housing.

The Decree also outlines the general guidelines and institutional responsibilities for the preparation, implementation, and monitoring of the RAP, emphasizing the

importance of informed public participation and respect for the rights of affected persons.

**Ministerial Diploma No. 130/2016 of 19 December — Guidelines for Implementing the Resettlement Process Resulting from Economic Activities:**

This diploma complements Decree 31/2012 by providing practical guidance on how to implement resettlement in practice. It reinforces the importance of participatory planning, establishes criteria for the selection of alternative land, defines procedures for calculating and paying compensation, provides mechanisms for grievance redress and conflict resolution, and requires continuous monitoring by a multisectoral committee throughout all implementation phases.

**Technical Directive on the Process of Preparing and Implementing Resettlement Plans (Ministerial Diploma No. 156/2014 of 19 September):**

This directive outlines the responsibilities of each institution involved in the resettlement process, the rights and duties of affected and interested parties, and provides guidance for preparing and implementing resettlement plans. It describes sequential stages, timelines, and budgeting for the entire resettlement process.

**General Directive for the Public Participation Process (Ministerial Diploma No. 130/2016 of 19 July):**

This directive highlights that public participation is the primary means of communication between government and non-governmental entities, civil society, local communities, and other stakeholders. It explains that the involvement of affected persons and other interested parties contributes significantly to identifying and assessing the potential impacts of a given activity.

**3.2 JICA Guidelines (2022)**

The **JICA Guidelines** emphasize that involuntary resettlement and loss of livelihoods must be avoided to the maximum extent possible. Such situations should only occur after all alternative options have been explored. When unavoidable, effective measures must be taken to minimize impacts and ensure fair compensation for losses, in coordination with affected parties.

Project-affected persons — those who are to be resettled or who may lose their livelihoods due to the project — must be adequately compensated and supported by the project proponent in a fair and timely manner.

The **RAP for the Natete River Bridge** integrates the JICA Guidelines and environmental and social considerations as a basis for:

- Planning of temporary and permanent resettlement;
- Defining economic and non-economic compensation measures;
- Prioritizing location and construction technology alternatives that minimize impacts;

- Ensuring continuous monitoring and evaluation throughout all project phases (construction, operation, and eventual decommissioning); and
- Guaranteeing compliance with Mozambican environmental and labor legislation, as well as international environmental and social safeguard policies.

Thus, the strict application of the **JICA Guidelines 2022** in the RAP ensures that the bridge reconstruction project not only meets technical and economic objectives but also promotes sustainable local development, social inclusion, and environmental protection — thereby strengthening community acceptance, as well as regional resilience.

The preparation of this RAP also considered the elements foreseen in the Environmental and Social Standard (ESS) 5 of the Environmental and Social Policies of the World Bank.

JICA's principles are complemented by the World Bank's ESS5, since the JICA Guidelines state that "JICA confirms that the environmental and social considerations of a project do not deviate significantly from the World Bank's Environmental and Social Policies." An additional fundamental principle based on the World Bank's ESS5 is as follows:

- The Borrower shall, as part of the environmental and social assessment, conduct a census to identify the people who will be affected by the project, to establish an inventory of land and assets to be affected, to determine who will be eligible for compensation and assistance, and to discourage ineligible persons, such as opportunistic settlers, from claiming benefits (ESS5, paragraph 20);
- Affected persons may be classified as persons: (a) Who have formal legal rights to land or assets; (b) Who lack formal legal rights to land or assets but have a claim to land or assets that is recognized or recognizable under national law; or (c) Who have no legal rights or recognizable claim to the land or assets they occupy or use. (ESS5, paragraph 10);
- The Borrower will offer affected persons compensation at replacement cost and other assistance that may be necessary to help them improve or, at least, restore their standards of living or livelihoods, subject to the provisions of paragraphs 26 to 36 of this ESS. (ESS5, paragraph 12);
- When the livelihoods of displaced persons are land-based, or when the land is collectively owned, the Borrower will offer displaced persons the option of replacement land in accordance with paragraph 35(a), unless it can be demonstrated to the Bank's satisfaction that equivalent replacement land is not available (ESS5, paragraph 14);
- Transitional support will be provided as needed to all economically displaced persons, based on a reasonable estimate of the time required to restore their

income-generating capacity, production levels, and standards of living. (ESS5, paragraph 36);

- Special attention will be given to gender aspects and the needs of the poor and vulnerable. (ESS5, paragraph 26);
- To address the issues identified in the environmental and social assessment, the Borrower will prepare a plan proportional to the risks and impacts associated with the project. (ESS5, paragraph 21).

In addition to the above core principles on the JICA policy, it also laid emphasis on a detailed resettlement policy inclusive of all the above points; project specific resettlement plan; institutional framework for implementation; monitoring and evaluation mechanism; time schedule for implementation; and, detailed Financial Plan etc.

### **3.3 Gaps between Local Laws on Expropriation and Resettlement and World Bank and JICA Standards, and the Mechanism to Bridge Them**

Mozambican legislation on expropriation and resettlement—including the Constitution of the Republic, the Land Law (Law No. 19/1997), the Land Law Regulations (Decree No. 66/1998), the Resettlement Regulations (Decree No. 31/2012), Decree No. 54/2015 on EIA, and Decree No. 14/2024 on Resettlement—establishes fundamental principles for the protection of land rights, compensation, and community participation.

However, when compared with the requirements of the World Bank's Safeguards Policy (ESS5: Land Acquisition, Restrictions on Land Use and Involuntary Resettlement) and the JICA Guidelines (2010) for Environmental and Social Considerations, several gaps emerge, primarily related to full compensation, restoration of livelihoods, support for vulnerable groups, and grievance mechanisms.

Table 3.1 presents a comparative summary and the gaps between national legislation, the World Bank's resettlement policy (ESS5), and the JICA Guidelines, including the practical implication.

Tab. 3.1 - Comparative – Gaps between Mozambique, World Bank (ESS5) and JICA

Theme / Criterion	Mozambique Legislation	World Bank (ESS5)	JICA Guidelines	Main Gap / Implication
<b>1. Compensation Criteria</b>	May include depreciated values; reference tables.	Compensation at full replacement cost, without depreciation.	Requires compensation at replacement value, including indirect costs.	Mozambique tends to compensate below real cost.
<b>2. Timing of Compensation</b>	Compensation before vacating, but without clarifying full pre-displacement support.	No displacement occurs before compensation + housing + support.	Same requirement—full compensation and support before displacement.	National law does not guarantee full support before resettlement.
<b>3. Affected Persons without DUAT / Informal Occupants</b>	Limited eligibility; dependent on DUAT recognition.	All affected persons are eligible, with or without title.	Similarly includes all occupants.	Informal occupants may be excluded by national law.
<b>4. Restoration of Livelihoods</b>	Greater focus on compensation for assets; limited measures.	Requires restoration or improvement of livelihoods.	Requires robust socio-economic restoration plans.	Mozambique does not mandate full restoration of livelihoods.
<b>5. Recognition of Vulnerable Groups</b>	Recognizes vulnerability, but without mandatory specific measures.	Requires identification and differentiated support with specific measures.	Same requirement as ESS5.	Insufficient or non-differentiated support for the vulnerable.
<b>6. Public Consultations</b>	Required, but focused on communication and validation.	Continuous, participatory, and documented consultations.	Identical to ESS5—iterative and inclusive process.	Consultations may be one-off and have low participation.
<b>7. Grievance Mechanism (GRM)</b>	Does not specify an independent, accessible process with defined deadlines.	Requires a functional, accessible, independent, and monitorable GRM.	Similar requirement to WB.	Lack of a systematic and accessible grievance mechanism.
<b>8. Post-Resettlement Monitoring</b>	Requires monitoring, but without clear socio-economic indicators.	Requires continuous monitoring until full restoration.	Same as WB—monitoring of socio-economic outcomes.	Risk of insufficient monitoring and no verification of restoration.
<b>9. Participation of Women</b>	Does not mandate differentiated participation.	Mandatory participation, with specific consultation.	Same requirement—attention to gender and inclusion.	Risk of excluding women from decision-making processes.
<b>10. Transitional Assistance</b>	Not explicitly defined.	Requires temporary support (subsidies, transport, food).	Same requirement.	Lack of temporary support for resettled families.

<b>11. Planned Physical Resettlement</b>	May be limited to building housing and basic infrastructure.	Houses, infrastructure, and social services must be guaranteed.	Identical—requires complete and functional infrastructure.	National projects may not include all essential services.
--	--	---	--	---

### Summary of Overall Gap

Mozambican legislation establishes an important basis for compensation and resettlement but does not reach the level of socio-economic protection required by the World Bank and JICA, especially regarding:

- Compensation at replacement cost;
- Inclusion of informal occupants;
- Restoration of livelihoods;
- Inclusive consultations;
- Structured grievance mechanism; and
- Support for vulnerable groups.

Prepared by:  
 Administração Nacional de Estradas (ANE)  
 Avenida de Moçambique, nº 1225, CP 403  
 Tel.: +258-21476163 | Bairro Luís Cabral, Maputo

Prepared for:  
 Enviestudos, Consultoria Ambiental e Serviços, Lda  
 Rua Viana da Mota nº 72 1º Andar  
 Telef. +258843289330. Maputo, MOÇAMBIQUE

## 4 DELINEATION OF THE AFFECTED AREA

The area affected by the project was defined considering both direct and indirect impacts on people, assets, and socioeconomic activities, in accordance with JICA guidelines and national legislation.

For analytical and management purposes under the RAP, the area was subdivided into two main categories below.

### 4.1 Direct Influence Area (DIA)

The DIA corresponds to the zone immediately affected by the construction and operation activities of the bridge. It includes the bridge site and adjacent riverbanks; the construction camp; access roads; material storage and sorting areas; borrow pits and quarries used for construction material extraction; and infrastructures potentially affected, such as houses, farmland, informal vending stalls, and other structures directly used by local communities.

Typical impacts in this area include partial or total loss of assets, the need for physical or economic resettlement, disruption of productive activities, risks to physical safety, and changes in land use. Figures 4.1 and 4.2 show the areas directly affected by the project.



Fig. 4.1 - Illustration of the areas covered by the project

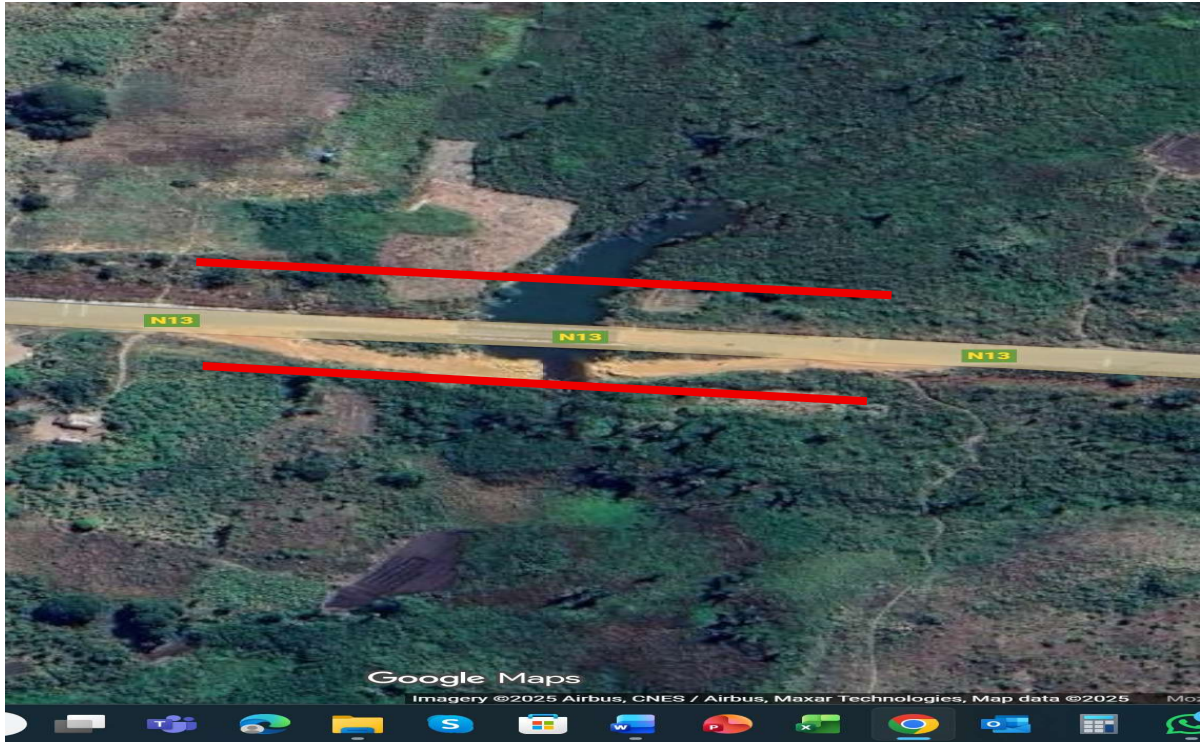


Fig. 4.2 - Both sides affected shown on google map.

## 5 RESULTS OF THE CENSUS AND SOCIOECONOMIC PROFILE OF AFFECTED PERSONS

### 5.1 Socioeconomic Census

The main instrument for the census and socioeconomic survey was a structured questionnaire, complemented by direct field observations and photographic records of the intervention area.

The questionnaire was administered in a single day, during which all assets located within the DIA were enumerated. A **total of 6 Project Affected Households (PAHs)** were identified as landowners within the DIA, the majority being men and two women. The Fig. 5.1 presents the PAPs with assets located in the DIA. Their activities include agriculture, fish farming, and residence in precarious housing conditions. About health census, they don't have any recognized kind of disabled persons, chronic disease holders and no chronic disease.



Fig. 5.1 - PAPs with assets located in the Direct Influence Area.

Table 5.1 presents a summary of the socioeconomic results and Annex B presents the list of PAPs and their respective affected properties.

Tab. 5.1 - Results of the socioeconomic data

Type of loss	No of HHS			No of Persons		
	Legal	Informal	Total	Legal	Informal	Total
Required for displacement	0	0	0	0	0	0
1. Structure owner on Gov. land	0	0	0	0	0	0
2. Structure on Private land	0	0	0	0	0	0
3. Tenants	0	0	0	0	0	0
4. CBEs (Structure owner Gov. land)	0	0	0	0	0	0
5. CBEs (Structure owner on Private land)	0	0	0	0	0	0
6. CBEs (Tenants)	0	0	0	0	0	0
7. Community owned structures including physical cultural resources	0	0	0	0	0	0
Not required for displacement	0	6	6	0	30	30
8. Land owners	0	0	0	0	0	0
9. Wage earners	0	0	0	0	0	0
10. No regular income	0	6	6	0	30	30
Grand Total (1-9)	0	6	6	0	30	30

**HH:** House Hold, **CBEs:** Commercial and Business Enterprises

On the day of the census, some out of the 6 identified PAHs were present, responded to the questionnaire, and guided the consulting team through their plots, showing their assets and productive activities. It was observed that most households engage in subsistence agriculture.

The others were absent, one sent a representative, and the other — who was out of town — provided information by phone, which was confirmed by the local leader, authorizing the site visit.

Sex, age and occupations of the PAHs are presented on the Tab 5.2.

Tab. 5.2 –Age and occupations of the PAHs

Age Group of Household Head	Gender of Household Head	Job	Respondent
No response			
Under 15			
16-20			
21-30	3	Peasant	3
31-40	2	Peasant	2
41-50	1M	Peasant	1
51-60			
Over 60			
Total	6	6	6

The number of affected household members are presented on the Tab 5.3.

Tab. 5.3 – Number of household members

AHH No.	Number of household members	Age of head of household
1	4	21-30
2	6	41-50
3	5	31-40
4	5	31-40
5	6	21-30
6	4	21-30

Status of living infrastructure of the PAHs are following.

Tab. 5.4 – Number of living infrastructures

Living Infrastructure	Number
Lighting	No response
	Electricity

	Flashlight	6
	Oil Lamp	8
	Sora panel	No
	Others (Firewood)	
	<b>Total</b>	<b>8</b>
Kitchen	No response	0
	Firewood	8
	Charcoal	No
	Gas	No
	Others (specify)	No
<b>Total</b>		<b>8</b>
Water	No response	0
	Water Supply	No
	Rainwater	No
	River water	8
	Others (well)	
<b>Total</b>		<b>8</b>

## 5.2 Land Use

### 5.2.1 Left Bank (Bank A)

On the left bank (Bank A), **two farmland plots (machambas)** were identified, with main crops including butter beans, cassava, and “búer” beans. During the latest field visit, it was observed that some of these crops were **flooded**, due to the temporary diversion constructed beside the bridge, which affected the **búer beans** and **maize** plantations (Figure 5.2).

In addition to the farmland, two houses (Figure 5.3) were found, which may be indirectly affected, as well as several fruit trees, including avocado, mango, lemon, orange, guava, and cashew trees. The Figure 5.4 show two houses will be indirectly affected shown on google map.

The Figure 5.5 show the well-used for consumption by the populations in the vicinity of the bridge.



Fig. 5.2 - Flooded farmland on the left bank of the bridge.

### 5.2.2 Right Bank (Bank B)

On the right bank (Bank B), the following were identified:

- A **farmland plot** with maize, butter beans, pumpkin, and onion crops, as well as sugarcane and banana plants;
- A **fallow field**; and
- A **vacant plot**, currently unused, identified as the most likely site for the construction camp.



Fig. 5.3 - Farmland with mixed crops on the right bank.



Fig. 5.4 - Fallow Field



Fig. 5.5 - Vacant land – probable area for construction camp installation

## 6 IMPACT ASSESSMENT AND ELIGIBILITY CRITERIA

### 6.1 Impact Assessment

The project will affect approximately six (6) households, of whom four (4) practice subsistence agriculture, and two (2) occupied land.

#### 6.1.1 Impact Due to Loss of Land Use

All six PAHs may experience permanent loss of land use to allow the implementation of construction activities, including bridge reconstruction, establishment of the contractor's yard, and the temporary detour.

#### 6.1.2 Impact on Crops and Trees

The socio-economic survey determined that four (4) PAPs within the Directly Affected Area (DAA) may lose plots currently used for agricultural purposes. The main crop identified in the area is butter bean (*feijão manteiga*), an important component of the local diet. It was also observed that approximately 90% of PAPs have fruit trees and perennial plants, predominantly mango, banana, and citrus trees, within the affected area.

Lost properties (crops and trees) are presented on the Tab.6.1

Tab 6.1 - Lost properties (crops and trees)

PAHs No.	Affected crops and trees	Quantities	
		Areas (m2)	Numbers
1	Maize	625	-
	Onion		
	Sugarcane		
	Butter beans		
	Pumpkin		
2	Banana trees	-	17
	Sugarcane	-	10
3	Butter beans	487.5	-
4	Cassava	625	-
	Buer Beans		
	Cashew tree	-	1
	Guava tree	-	1
	Avocado tree	-	1
5	Mango tree	-	3
	Cashew tree	-	1
	Orange tree	-	2
	Lemon tree	-	2
6	Mango tree	-	1
	Cashew tree	-	1

## 6.2 Eligibility Criteria

PAPs are entitled to various forms of compensation for the losses incurred, with the objective of restoring — or preferably improving — their pre-project living standards. The asset inventory conducted on 12 September 2025 (established as the cut-off date) served as the basis for communication with affected persons, clarifying that any occupation or improvement within the project area after this date would not be eligible for compensation under this RAP.

All PAPs were sensitized not to build new structures after the cut-off date. Communication was carried out in advance by the consultant and the National Roads Administration (ANE) with all Project Interested and Affected Parties (PI&APs), including government bodies, community leaders in Ribáué, and individuals with assets in the DAA.

In accordance with Mozambican legislation, the JICA Guidelines, and the World Bank’s OP 4.12, the rights of PAPs must be respected. For this project, entitlements were categorized based on the nature of impacts, prioritizing the following:

- Right to compensation for **loss of crops, trees, and other plants**.

### 6.1.3 Right to Compensation for Loss of Crops and Trees

World Bank OP 4.12 stipulates that crops and trees must be compensated at **full replacement cost**, which includes the cost of land preparation (for perennial or economic trees) and lost production time, as well as the value of the remaining productive years.

The policy also recommends **investment in alternative livelihood skills training** in cases where agricultural land is affected, recognizing the importance of agriculture to household income and food security.

Entitlement matrix for the affected persons are presented on Tab 6.2.

Tab 6.2 – Entitlement Matrix

Item	Type of loss	Entitled Persons (beneficiaries)	Entitlement (Compensation Package)	Implementation issues/Guidelines	Responsible Organizations
CROPS AND TREES	Loss of crops	Crop owners regardless of land tenure status	Cash compensation for loss of crops at full replacement cost, allowed to harvest to the extent possible prior to construction	<ul style="list-style-type: none"> <li>• Assessment of quantity of crops</li> <li>• Assessment of cash compensation based on DPDTA regulation (compensation table)</li> </ul>	ANE
			Vulnerable household support		

Item	Type of loss	Entitled Persons (beneficiaries)	Entitlement (Compensation Package)	Implementation issues/Guidelines	Responsible Organizations
				<ul style="list-style-type: none"> <li>• Informing entitlement and procedure to PAP</li> <li>• Cash compensation prior to construction</li> </ul>	
	Loss of Fruit Trees	Fruit tree owners regardless of land tenure status	Compensation at full replacement value, allowed to harvest to the extent possible prior to construction  Vulnerable household support	<ul style="list-style-type: none"> <li>• Assessment of quantity of crops</li> <li>• Assessment of cash compensation based on DPDTA regulation (compensation table)</li> <li>• Informing entitlement and procedure to PAP</li> <li>• Cash compensation prior to construction</li> </ul>	ANE

## 7 COMPENSATION AND RESETTLEMENT STRATEGIES

### 7.1 Compensation Calculation

The calculation of compensation for crops and plants was based on the 2023 compensation table provided by the authorities of Nampula. All crops belonging to the PAPs were considered.

The process involved calculating the average value of each type of crop in each plot (machamba), multiplying this value by the area occupied by the crops, and then adding a 10% contingency.

The total estimated cost of compensation for crops and plants within the DAA amounted to approximately **MZN 149,908.51** (one hundred and forty-nine thousand, nine hundred and eight Meticaís and fifty-one cents). **Annex C** presents the compensation values for each PAH and the detailed tables used to calculate these compensation amounts.

Tab 7.1 - Compensation for Lost Properties

PAHs No.	Lost Crops or Fruit trees	Quantities		Cost per m <sup>2</sup> or tree	Sub Total (MT)	Total for each PAH (MT)				
		Areas (m <sup>2</sup> )	Number of tree							
1	Maize	625	-	100.8	63,000	63,000				
	Onion									
	Sugarcane									
	Butter beans									
	Pumpkin									
2	Banana trees	-	17	360	6,120	6,600				
	Sugarcane	10		48	480					
3	Butter beans	487.5	-	49.5	24,131.25	24,131.25				
4	Cassava	625	-	45.75	28593.75	31,452.25				
	Buer Beans									
	Cashew tree						-	1	1,680	1,680
	Guava tree						-	1	598.5	598.5
	Avocado tree						-	1	580	580
5	Mango tree	-	3	1,064	3,192	8,352.96				
	Cashew tree	-	1	1,680	1,680					
	Orange tree	-	2	870.24	1,740.48					
	Lemon tree	-	2	870.24	1,740.48					
6	Mango tree	-	1	1,064	1,064	2,744.00				
	Cashew tree	-	1	1,680	1,680					
Sub Total						136,280.46				
Contingency						10%	13,628.05			
Total						149,908.51				

## 8 PUBLIC CONSULTATION AND PARTICIPATION PLAN

### 8.1 Introduction

The public participation process is both a legal and ethical requirement, aligned with the Mozambican legal framework, the JICA Guidelines for Environmental and Social Considerations, and the overall sustainability principles of the project.

The Mozambican legal framework, under Decree n° 31/2012, of 8 August establishes the obligation to conduct Public Consultations (PC) as part of the resettlement process. The main objective of these consultations is to reinforce social inclusion, ensuring that all interested and affected parties receive clear and accessible information about the project, while providing them with the opportunity to express opinions, concerns, and expectations regarding its implementation. This participatory process contributes to transparent decision-making and helps prevent potential conflicts in the future.

### 8.2 Methodology for Public Consultation

For this project, two public consultation meetings were planned. The first meeting was held on 22 August 2025, aimed at introducing the project to the local community. It was well attended, with 238 participants. The second consultation took place on 17 October 2025, focusing on presenting the findings and analyses contained in this RAP (Resettlement Action Plan). It gathered approximately 56 participants.

Announcements of both public consultations were published in the national newspaper “Jornal Notícias”, as presented in Annexes D and E, while the list of participants is provided in Annex F of this report.

### 8.3 Planning and Prior Dissemination

Following the first consultation meeting, a clear understanding was established of the main stakeholders, which included provincial and district authorities, administrative post chiefs, community leaders, traditional leaders (régulos), representatives of civil society organizations, and members of the affected communities.

Public notices for both consultation meetings were published in the national media, including *Jornal Notícias*, at least 15 days in advance, in compliance with Article 15 (7) of Decree No. 54/2015 of 31 December.

In parallel, formal invitations were sent to relevant authorities and community leaders. The latter also played a key role in disseminating the information within their communities, ensuring that the message reached the largest possible number of participants, especially the Project Affected Households (PAHs), particularly for the second public consultation.

## 8.4 Organization of the Public Sessions

Both meetings were held in accessible and socially neutral community spaces, suitable for the expected number of participants and easy to reach for the local population.

The sessions were conducted with simultaneous translation into the local language (Emakwa) and used clear, non-technical language to ensure understanding. The sessions provided a detailed explanation of the project, including the results and analyses contained in the RAP. At the end of each meeting, participants were given the opportunity to express their concerns, questions, and opinions.

Both consultations were fully documented, including Minutes of the Meeting, Attendance Lists, and a photographic record, to ensure transparency, inclusiveness, and verifiable evidence of stakeholder engagement.

## 9 GRIEVANCE REDRESS MECHANISM (GRM)

The implementation of any development project is subject to potential complaints or disputes. It is therefore a legal requirement that interested and affected parties (I&APs) have access to a clear, organized, and predictable mechanism through which they can submit their concerns, requests for clarification, or formal grievances for resolution.

The GRM must be accessible, inclusive, transparent, fair, rapid, and safe, ensuring that all grievances are properly recorded and tracked, and that support is provided to illiterate complainants to help them register their complaints.

For this project, a toll-free hotline will be made available for community members to report project-related grievances or complaints. In addition, community leaders will serve as an alternative channel for receiving grievances, which will then be forwarded through the most appropriate institutional path for review and resolution.

## 10 MONITORING AND EVALUATION PLAN

Monitoring and evaluation constitute a critical phase in the implementation of the RAP, aimed at assessing performance based on the established schedule and indicators. The purpose of the monitoring and evaluation process is to ensure that:

- The RAP is implemented in full compliance with national legislation and JICA Guidelines on involuntary resettlement;
- The proposed actions are executed according to the approved implementation schedule;
- Any deviations identified are promptly addressed through effective corrective measures to guide the proper implementation of the RAP;
- Progress reports on the RAP are prepared and shared with all relevant stakeholders; and
- The functioning of the GRM is continuously monitored, and corrective actions are taken in case of inconsistencies or unresolved complaints.

For this RAP, the implementation schedule has not yet been finalized and is currently under review. It will be included in the final version of the RAP report once validated.

### 10.1 Monitoring and Evaluation Indicators

Key indicators for monitoring and evaluation of the RAP include:

- Signing of resettlement and compensation agreements with PAHs;
- Relocation of PAPs to adequate and approved resettlement areas;
- Ongoing supervision and follow-up of the resettlement process to ensure compliance with approved standards and community satisfaction.

### 10.2 Institutions Involved and Their Responsibilities in the RAP

Tab. 10.1 – Institutions involved and their responsibilities in the RAP

Institution	Role and Responsibilities
<b>ANE</b>	Project proponent responsible for coordinating and supervising RAP implementation; overseeing technical and socio-economic studies; ensuring financing and full legal compliance.
<b>EnviEstudos, Lda.</b>	Responsible for preparing the RAP and facilitating public consultation meetings and disclosure activities.
<b>Provincial Directorate of Infrastructure of Nampula (DPI)</b>	Provides technical and institutional support to ANE at the provincial level; oversees RAP execution and ensures technical supervision; coordinates local activities and community mobilization.
<b>Ribáué District Government</b>	Assists in conflict mediation and facilitates resettlement activities; validates affected persons' lists and supports data verification and community engagement.

<p><b>Local Government Bodies and Community Leaders</b></p>	<p>Conduct community sensitization and communication; validate lists of affected families and assets; assist in resolving land and social conflicts within the resettlement process.</p>
---	--

## 11 IMPLEMENTATION SCHEDULE

The implementation schedule of this RAP has **not yet been defined**, as some detailed data necessary for its preparation are still under evaluation. However, all future activities — including **implementation phases, responsible institutions, and respective timeframes** — will be included in the **final version of the RAP Report** once the required information has been consolidated and validated.

The table 11.1 show the RAP proposal implementation schedule.

Tab 11.1- RAP proposal implementation schedule

Phase/Activity	2025	2026												2027	2028	2029	
		1	2	3	4	5	6	7	8	9	10	11	12				
Signing of Exchange of Note /Grant Agreement between JICA and Mozambique government (April 2026)																	
Detailed design (June 2025- Febr 2026)																	
Construction (from Feb.2027 to Dec. 2029)																	
Handover (Dec. 2028)																	
Inspection (Dec. 2029)																	
<b>Establishing RAP implementing institution</b>																	
Secure Budget for RAP																	
Appointment of an internal management and monitoring officer																	
Form MOA with partner institution																	
Operation of PMU																	
Operation of Steering committee																	
Operation of Monitoring committee																	
Operation of RAP / ESIA Execution Committee																	
Implementation (operation) of GRM																	
<b>Payment of compensation</b>																	
Meeting with local authorities/PAHs																	
Recalculation of replacement cost																	
Validation of replacement cost, compensation cost etc.																	
Issuance of notice to PAHs																	
Offer by PAHs																	
Negotiation																	
Singing of agreement documents by PAHs (1 month from the notice)																	
Payment of compensation to PAHs																	
Relocation of PAHs and release of the right-of-way																	
Assistance to PAHs for compensation process,																	

Prepared by:  
 Administração Nacional de Estradas (ANE)  
 Avenida de Moçambique, nº 1225, CP 403  
 Tel.: +258-21476163 | Bairro Luís Cabral, Maputo

Prepared for:  
 Enviestudos, Consultoria Ambiental e Serviços, Lda.  
 Rua Viana da Mota nº 72 1º Andar  
 Telef. +258843289330. Maputo, MOÇAMBIQUE

<b>Relocation ? (In-kind compensation)</b>															
Assistance to find relocation sites															
Assistance to PAHs during their move to new place															
<b>Collection, processing and management of claims and complaints (GRM)</b>															
Dissemination of GRM process															
Operation of GRM															
<b>Monitoring and evaluation of RAP implementation starting immediately after RAP approval</b>															
Internal monitoring of the implementation of the RAP															

Prepared by:  
 Administração Nacional de Estradas (ANE)  
 Avenida de Moçambique, nº 1225, CP 403  
 Tel.: +258-21476163 | Bairro Luís Cabral, Maputo

Prepared for:  
 Enviestudos, Consultoria Ambiental e Serviços, Lda.  
 Rua Viana da Mota nº 72 1º Andar  
 Telef. +258843289330. Maputo, MOÇAMBIQUE

## 12 CONCLUSIONS AND RECOMMENDATIONS

### 12.1 Conclusions

The implementation of the RAP for the Preparatory Survey for the Project of Construction of Natete Bridge in the Republic of Mozambique ensures that all social and economic impacts associated with land acquisition and the temporary displacement of people and assets are properly identified, assessed, and mitigated in accordance with Mozambican legislation and JICA Guidelines (2022).

The study confirmed that only a small number of households (6 PAHs) will be directly affected, primarily through the temporary loss of agricultural land, crops, and minor infrastructure. No resettlement or community dislocation will occur, and all impacts are localized, temporary, and reversible with the application of the planned compensation and livelihood restoration measures.

The compensation framework, based on the 2023 Provincial Compensation Table of Nampula, guarantees full replacement value for all affected assets, including agricultural products, perennial crops, and minor structures. The total estimated compensation cost is MZN 149,908.51, inclusive of a 10% contingency.

Public consultations held in August and October 2025 demonstrated broad community participation and acceptance of the project, with active involvement of local authorities, community leaders, and civil society representatives. The consultation process was conducted in the local language (Emakwa) and documented through minutes, attendance lists, and photographs, ensuring transparency and inclusivity.

The GRM established under this RAP provides an accessible, free, and transparent channel for community members to submit complaints or requests for clarification. The mechanism integrates both formal (toll-free hotline) and informal (community leaders) communication channels, ensuring that all grievances are addressed promptly and fairly.

Institutional arrangements defined in this RAP provide for effective coordination between ANE, JICA, the Provincial Directorate of Infrastructure, the Ribáuè District Government, and local leaders, ensuring that all resettlement activities are conducted in a transparent and accountable manner.

Overall, the reconstruction of the Natete Bridge will bring significant socio-economic benefits to the Ribáué District and surrounding areas, including improved mobility, enhanced connectivity, increased safety, and greater access to markets, education, and health services. The RAP guarantees that these benefits are achieved while respecting the rights, dignity, and well-being of all affected persons.

## 12.2 Recommendations

1. **Finalize and Validate Compensation Payments:** Ensure that all compensation payments are completed prior to the commencement of construction, and that beneficiaries sign official acknowledgment and consent forms.
2. **Strengthen Institutional Coordination:** Maintain close collaboration between ANE, DPI Nampula, Ribáué District Government, and JICA to ensure continuous supervision, transparent financial management, and timely implementation of the RAP.
3. **Implement Continuous Monitoring:** Conduct quarterly monitoring of the resettlement and compensation process, including site verification, livelihood restoration progress, and PAP satisfaction surveys.
4. **Operationalize the GRM:** Activate and publicize the GRM through community radio, posters, and local leaders to guarantee that all affected persons are aware of their right to submit complaints and receive responses within reasonable timeframes.
5. **Provide Livelihood Restoration Support:** Offer technical assistance and, where possible, inputs (e.g., seeds, tools) to help PAPs restore agricultural production and income-generating activities after relocation.
6. **Ensure Gender and Vulnerability Considerations:** Pay special attention to women-headed households, elderly persons, and vulnerable groups, ensuring that compensation and support measures adequately address their specific needs.
7. **Maintain Transparent Communication:** Continue public disclosure and communication throughout RAP implementation to reinforce community trust and prevent misinformation or disputes.
8. **Include Final Evaluation and Audit:** Upon completion of all RAP activities, perform a final evaluation and external audit to assess compliance with national and JICA safeguard standards and to document lessons learned for future projects.

## 13 REFERENCES

All reference materials, legal instruments, and technical guidelines used in the preparation of this RAP will be listed in the **References Section** of the final report, including:

- Mozambican national environmental and resettlement legislation;
- JICA Guidelines for Environmental and Social Considerations (2022);
- Decree No. 54/2015 of 31 December – Regulation on the Environmental Impact Assessment Process;
- Decree No. 31/2012 of 8 August – Regulation on Resettlement Resulting from Economic Activities;
- Decree No. 45/2024 of 26 June – Regulation on Environmental Auditing and Monitoring;
- Other relevant technical and institutional documents consulted during the preparation of this RAP.

## Annexes

**Annex A**  

---

**Socioeconomic Survey Form**

Prepared for:  
Administração Nacional de Estradas (ANE)  
Avenida de Moçambique, nº 1225, CP 403  
Tel.: +258-21476163 | Bairro Luís Cabral, Maputo

Prepared by:  
Enviestudos, Consultoria Ambiental e Serviços, Lda.  
Rua Viana da Mota nº 72 1º Andar  
Telef. +258843289330. Maputo, MOÇAMBIQUE



2. Na tabela abaixo, **para culturas perenes**: identificar cada arvore, quantificar cada especie de arvore, saber a idade da arvore, no caso de arvores frutiferas, identificar a quantidade produzida, em caso de venda identificar o preço de cada fruto.

N/O	Planta	Quant.	Idade (Fase da planta)			Destino da produção		Preço de venda	
			Planta nova	Produção	Terminal	Consumo próprio	Venda	Unidade	kg
1									
2									
3									

3. Na tabela abaixo, **para outras culturas perenes**: identificar cada arvore, quantificar cada especie de arvore, saber a idade da arvore.

N/O	Planta	Quant.	Idade (Fase da planta)			Destino da produção		Preço de venda	
			Planta nova	Produção	Terminal	Consumo próprio	Venda	Unidade	kg
1									
2									
3									

4. Possui algum outro activo dentro da area parcelada (casa, cercas, infraestruturas comunitarias)? Sim \_\_\_ Não \_\_\_

Caso exista, descreva abaixo (incluir tamanho e tipo de material usado para construcao):

\_\_\_\_\_

Data limite: \_\_\_/\_\_\_/\_\_\_

Assinatura do produtor: \_\_\_\_\_

Assinatura do Inquiridor: \_\_\_\_\_

Fim!

## Annex B

---

### List of PAPs and other Relevant Information

Prepared for:  
Administração Nacional de Estradas (ANE)  
Avenida de Moçambique, nº 1225, CP 403  
Tel.: +258-21476163 | Bairro Luís Cabral, Maputo

Prepared by:  
Enviestudos, Consultoria Ambiental e Serviços, Lda.  
Rua Viana da Mota nº 72 1º Andar  
Telef. +258843289330. Maputo, MOÇAMBIQUE

Plot ID	Name	Land Use	Plot Size	Improvements	Observations
1	Patrício Manuel da Silva	Smallholding (Machamba)	50m x 50m	Onions, Butter Beans, Sweet Cane, Pumpkin, Maize	Crops occupy about half of the total plot area. Located on Bridge Bank B.
2	Pilarmino Adriano Laranjeira	Fruit Trees & Fallow Land	50m x 50m	17 Banana Trees, Sugarcane	Located on Bridge Bank B.
3	Lidia Pedro	Smallholding (Machamba)	13m x 75m	Butter Beans	Located on Bridge Bank A.
4	Marta Pedro	Smallholding (Machamba)	40m x 50m	Cassava, Búer Beans, 1 Cashew Tree, 1 Guava Tree, 1 Avocado Tree	Located on Bridge Bank A.
5	Reginaldo Pedro	Empty Plot	50m x 50m	1 House, 3 Mango Trees, 1 Cashew Tree, 2 Orange Trees, 2 Lemon Trees	Located on Bridge Bank A.
6	Justino Pedro	Vacant Land	50m x 50m	1 House, 1 Mango Tree, 1 Cashew Tree	Located on Bridge Bank A.

### PAHs' age group and job

Age Group of Household Head	Gender of Household Head	Job	Respondent
No response			
under 15			
16-20			
21-30	3	Peasant	3
31-40	2	Peasant	2
41-50	1	Peasant	1
51-60			
Over 60			
<b>Total</b>	<b>6</b>	<b>6</b>	<b>6</b>

### Affected Property

Item	Quantity
Crop Area (m <sup>2</sup> )	1737,5
Land Area (m <sup>2</sup> )	8737,5
Farmland Area(m <sup>2</sup> )	2487,5
Fallow Land Area (m <sup>2</sup> )	625
Under Construction Property (fishpond)	2
Community Area (m <sup>2</sup> )	0
Trees (unmanaged) <i>trees in the construction yard and detour area</i>	55
Maximum height of trees (m)	6
Trees (economically valuable)	0

### Household, Living Survey Members of each PAH

Age Group	PAH 1	PAH 2	PAH 3	PAH 4	PAH 5	PAH 6
No Response						
0-5						
6-10						
11-15						
16-20						
21-30	4				6	4
31-40			5	5		
41-50		6				
51-60						
Over 60						
<b>Total</b>	<b>4</b>	<b>6</b>	<b>5</b>	<b>5</b>	<b>6</b>	<b>4</b>

Prepared for:  
 Administração Nacional de Estradas (ANE)  
 Avenida de Moçambique, nº 1225, CP 403  
 Tel.: +258-21476163 | Bairro Luís Cabral, Maputo

Prepared by:  
 Enviestudos, Consultoria Ambiental e Serviços, Lda.  
 Rua Viana da Mota nº 72 1º Andar  
 Telef. +258843289330. Maputo, MOÇAMBIQUE

Monthly Income		Household Head's Education Level	
Household	Income	Education Level	Respondent
Below (please specify)		Uneducated	6
PH1	No income	Religious School	No
PH2	No income	Others	No
PH3	No income	Primary School	No
PH4	No income	Secondary School	No
PH5	No income	Higher Education	No
PH6	No income	Technical School	No
		Total	6

### Household Utility

Lighting	No Response	
	Electricity	No
	Flashlight	6
	Oil Lamp	6
	Solar panel	No
	Others (specify)	Firewood
Total		6
Kitchen	No Response	
	Firewood	6
	Charcoal	No
	Gas	No
	Others (specify)	No
Total		6
Water	No Response	
	Water Supply	No
	Rainwater	No
	River water	6
	Others (specify)	well
Total		6

Annex C  

---

Table of Compensations

List of PAPs	Type of Asset	Description of Asset	Size (m <sup>2</sup> / Quantity)	Price/m <sup>2</sup> or Price/Plant (MZN)	Total Value (MZN)	Total Value per PAP (MZN)
	Farmland	Maize	625	100,8	63 000	63 000,00
	Farmland	Onion				
	Plant	Sugarcane				
	Farmland	Butter beans				
	Farmland	Pumpkin				
	Plant	Banana trees	17	360	6 120	6 600,00
	Plant	Sugarcane	10	48	480	
	Farmland	Butter beans	487,5	49,5	24 131,25	24 131,25
	Farmland	Cassava	625	45,75	28 593,75	
	Farmland	Buer beans	—	—	—	
	Tree	Cashew tree	1	1 680	1 680	31 452,25
	Tree	Guava tree	1	598,5	598,5	
	Tree	Avocado tree	1	580	580	
	Tree	Mango tree	3	1 064	3 192	
	Tree	Cashew tree	1	1 680	1 680	8 352,96
	Tree	Orange tree	2	870,24	1 740,48	
	Tree	Lemon tree	2	870,24	1 740,48	
	Tree	Mango tree	1	1 064	1 064	2 744,00
	Tree	Cashew tree	1	1 680	1 680	
<b>Sub-total</b>	—	—	—	—	—	136 280,46
<b>Contingency (10%)</b>	—	—	—	—	—	—
<b>Total</b>	—	—	—	—	—	149 908,51
<b>Designation</b>	<b>Quantity (un/m<sup>2</sup>)</b>	<b>Cost</b>		<b>Tree</b>	<b>Quantity</b>	<b>Total (all on Margin B)</b>
Plants	27	6 600,00		Mango Tree	4	13
Cultures	1737,5	115 725,00		Cashew tree	3	
Fruit trees	13	13 955,46		Lemon tree	2	
sub-total		136 280,46		Orange tree	2	
Contingency (10%)				Guava tree	1	
<b>Total</b>		149 908,51		Avocado tree	1	
				<b>Plants</b>	<b>Margin A</b>	<b>Margin B</b>
				Sugarcane	10 un	0
				Banana	17 un	0
				<b>Total</b>	27	0
				<b>Land</b>	<b>Margin A</b>	<b>Margin B</b>
				Farmland	625m <sup>2</sup>	1112.5 m <sup>2</sup>
				<b>Total</b>		1737.5 m <sup>2</sup>

Prepared for:  
 Administração Nacional de Estradas (ANE)  
 Avenida de Moçambique, n° 1225, CP 403  
 Tel.: +258-21476163 | Bairro Luís Cabral, Maputo

Prepared by:  
 Enviestudos, Consultoria Ambiental e Serviços, Lda.  
 Rua Viana da Mota n° 72 1° Andar  
 Telef. +258843289330. Maputo, MOÇAMBIQUE

**CÁLCULO DE COMPENSAÇÕES**  
 $VI = \text{Prod/ha} * \text{At} * \text{Pr/kg} * a$   
 Culturas Anuais

Cultura	Rendimento (Ton/ha)	Produção por hectare "Prod/ha" (kg/ha)	Área total "At" (ha)	Preço de cultura "Preço/kg" (Mf)	Factor "a" bens Intangíveis	Valor de indemnização "VI" 2021 (Mf/ha)	Valor de indemnização "VI" 2023 (Mf/m <sup>2</sup> ou Mf/planta)
Milho	2.5	2,500.00	1.0	17.00	18	765,000.00	76.50
Mapira	1.2	1,200.00	1.0	25.00	20	600,000.00	60.00
Mexoeira	1.0	1,000.00	1.0	30.00	19	570,000.00	57.00
Arroz	2.5	2,500.00	1.0	40.00	7	700,000.00	70.00
Mandioqueira	12	12,000.00	1.0	35.0	1	420,000.00	42.00
Inhame	15	15,000.00	1.0	32.0	1	480,000.00	48.00
Batata-doce	12	12,000.00	1.0	45.00	1	540,000.00	54.00
Batata-reno	16	16,000.00	1.0	50.00	1	800,000.00	80.00
Outros Feijões	0.9	900.00	1.0	45.00	11	445,500.00	44.55
Feijão Manteiga	0.9	900.00	1.0	50.00	11	495,000.00	49.50
Amendoim	1.0	1,000.00	1.0	50.00	14	700,000.00	70.00
Gergelim	0.8	800.00	1.0	50.00	17	680,000.00	68.00
Girassol	0.5	500.00	1.0	55.00	19	522,500.00	52.25
Ricino	1.5	1,500.00	1.0	40.00	9	540,000.00	54.00
Hortícolas em viveiros	20.0	20,000.00	1.0	20.00	8	3,300,000.00	330.00
Hortícolas em produção	20.0	20,000.00	1.0	10.00	11	2,100,000.00	210.00
Melancia	15.0	15,000.00	1.0	20.00	3	900,000.00	90.00
Abóbora	10.0	10,000.00	1.0	30.00	4	1,200,000.00	120.00
Tabaco	0.6	600.00	1.0	25.00	14	210,000.00	21.00
Algodão	0.6	600.00	1.0	45.00	18	495,018.00	49.50
Cana-de-açúcar	40.0	40,000.00	1.0	10.00	1	480,000.00	48.00

Prepared for:  
 Administração Nacional de Estradas (ANE)  
 Avenida de Moçambique, nº 1225, CP 403  
 Tel.: +258-21476163 | Bairro Luís Cabral, Maputo

Prepared by:  
 Enviestudos, Consultoria Ambiental e Serviços, Lda.  
 Rua Viana da Mota nº 72 1º Andar  
 Telef. +258843289330. Maputo, MOÇAMBIQUE

**OUTRAS CULTURAS PERENES**

**Plantas Novas ( 1 a 2 Anos)**

Plantas	Vida Útil "VU" (Anos)	Idade "I" (Anos)	Período de Crescimento "X"	Produção Média Anual "Pm" (Kg/Planta)	Preço de Venda do Fruto "PV" (Mt)		K (0 a 1)	Valor de Planta "VP" 2023 (Mt)	Custo 2019	Cresc. (%)
					Mt/kg	Total				
Sisal	10	0	3	15		50.00	0.0	62.40	0.00	
Eucalipto	25	0	3	1		200.00	0.0	201.60	0.00	
Aloe vera	10	0	3	8		100.00	0.0	104.00	0.00	
Moringa	10	0	3	15		200.00	0.0	253.50	0.00	

**Plantas a partir de 3 anos**

Plantas	Vida Útil "VU" (Anos)	Idade "I" (Anos)	Período de Crescimento "X"	Produção Média Anual "Pm" (Kg/Planta)	Preço de Venda do Fruto "PV" (Mt)		K (0 a 1)	Valor de Planta "VP" 2023 (Mt)	Custo 2019	Cresc. (%)
					Mt/kg	Total				
Sisal	10	0	3	15		200.00	0.0	1,326.00	50.00	2,552.0
Eucalipto	25	0	3	1		1,000.00	0.0	1,008.00	250.00	303.2
Aloe vera	10	0	3	8		200.00	0.0	208.00	0.00	
Moringa	10	0	3	15		500.00	0.0	604.50	0.00	

OBS: Produção Média Anual "Pm" (Kg/Planta)

Sisal: Folhas.  
 Aloe vera: Folhas.  
 Moringa: Folhas e sementes.

**Fases de plantas**

1. Germinação;
2. Desenvolvimento vegetativo;
3. Reprodução / Produtivo;
4. Envelhecimento.

$$VP = (VU - (I - X) \times P_m) \times PV \times K$$

**FRUTEIRAS**

**1. PLANTAS NOVAS (1 A 3 ANOS)**

Plantas	Vida Útil "VU" (Anos)	Idade "I" (Anos)	período de Crescimento "X"	Produção Média Anual "Pm" (Kg/Planta)	Preço de Venda do Fruto "PV" (Mt)		K (0 a 1)	Valor de Planta "VP" 2023 (Mt)	Custo 2019	Cresc. (%)
					Mt/kg	Total				
Cajueiro	25	3	2	10	50.00	500.00	0.0	1,680.00	1,350.00	24.4
Mangueira	20	3	2	20	10.00	200.00	0.0	760.00	500.00	52.0
Bananeira	2	3	2	30	20.00	600.00	0.0	360.00	250.00	44.0
Citrinos	50	3	2	40	30.00	1,200.00	0.0	870.24	750.00	16.0
Litcheira	40	3	2	40	100.00	4,000.00	0.0	1,684.80	1,500.00	12.3
Pereira/abacateiro	30	3	2	50	20.00	1,000.00	0.0	580.00	500.00	16.0
Papaieira	3	1	2	30	15.00	450.00	0.0	594.00	500.00	18.8
Coqueiro	50	3	2	50	20.00	1,000.00	0.0	1,127.00	1,000.00	12.7
Goiabeira	15	3	2	15	10.00	150.00	0.0	598.50	500.00	19.7
Ateira	10	3	2	20	30.00	600.00	0.0	529.20	450.00	17.6
Maracuja	1	3	3	20	40.00	800.00	0.0	544.00	450.00	20.9
Videira	120	3	2	25	30.00	750.00	0.0	446.25	400.00	11.6
Pessegueiro	11	3	2	50	30.00	1,500.00	0.0	547.50	500.00	9.5
Ananaseiro	3	1	2	2	50.00	100.00	0.1	68.00	50.00	36.0
Morangueiro	3	1	1	30	41.68	1,250.40	0.0	51.20	50.00	2.4
Maçanqueira	49	3	2	15	10.00	150.00	0.0	540.00	500.00	8.0
Jamboloeiro	50	3	2	15	10.00	150.00	0.0	573.30	0.00	100.0

**Fases de plantas**

1. Germinação;
2. Desenvolvimento vegetativo;
3. Reprodução/. Produtivo;
4. Envelhecimento

**2. PLANTAS EM PRODUÇÃO**

Plantas	Vida Útil "VU" (Anos)	Idade "I" (Anos)	Período de Crescimento "X"	Produção Média Anual "Pm" (Kg/Planta)	Preço de Venda do Fruto "PV" (Mt)		K (0 a 1)	Valor de Planta "VP" 2023 (Mt)	Custo 2019	Cresc. (%)
					Mt/kg	Total				
Cajueiro	25	10	3	10	50.00	500.00	0.0	3,060.00	2,000.00	53.0
Mangueira	20	9	3	20	10.00	200.00	0.0	1,064.00	750.00	41.9
Bananeira	2	2	3	30	20.00	600.00	0.0	410.40	300.00	36.8
Citrinos	50	20	3	40	30.00	1,200.00	0.0	1,108.80	1,000.00	10.9
Litcheira	40	10	3	40	100.00	4,000.00	0.0	2,376.00	2,000.00	18.8
Pereira/abacateiro	30	2	3	50	20.00	1,000.00	0.0	1,007.50	750.00	34.3
Papaieira	3	2	3	30	15.00	450.00	0.0	1,242.00	1,000.00	24.2
Coqueiro	50	10	3	50	20.00	1,000.00	0.0	3,010.00	2,000.00	50.5
Goiabeira	15	8	3	15	12.13	181.95	0.0	1,009.82	1,000.00	1.0
Ateira	10	5	3	20	30.00	600.00	0.0	960.00	700.00	37.1
Maracuja	3	3	3	20	40.00	800.00	0.0	960.00	750.00	28.0
Videira	120	10	3	25	30.00	750.00	0.0	1,271.25	1,000.00	27.1
Pessegueiro	11	6	3	50	30.00	1,500.00	0.0	1,200.00	1,000.00	20.0
Ananaseiro	3	2	3	2	50.00	100.00	0.2	186.40	75.00	148.5
Morangueiro	3	2	3	30	139.13	4,173.90	0.0	115.20	100.00	15.2
Maçanqueira	49	10	3	15	10.00	150.00	0.0	1,323.00	1,250.00	5.8
Jamboloeiro	50	10	3	15	10.00	150.00	0.0	1,354.50	0.00	100.0

**Fases de plantas**

1. Germinação;
2. Desenvolvimento vegetativo;
3. Reprodução / Produtivo;
4. Envelhecimento

2. FASE TERMINAL

Plantas	Vida Útil "VU" (Anos)	Idade "I" (Anos)	Período de Crescimento "X"	Produção Média Anual "Pm" (Kg/Planta)	Preço de Venda do Fruto "PV" (Mt)		K (0 a 1)	Valor de Planta "VP" 2023 (Mt)	Custo 2019	Cresc. (%)
					Mt/kg	Total				
Cajueiro	25	10	4	6	50.00	300.00	0.0	991.80	750.00	32.2
Mangueira	20	9	4	15	10.00	150.00	0.0	405.00	250.00	62.0
Bananeira	2	2	4	20	20.00	400.00	0.0	a)	a)	
Citrinos	50	20	4	25	30.00	750.00	0.0	510.00	400.00	27.5
Litcheira	40	10	4	29	100.00	2,900.00	0.0	800.63	750.00	6.8
Pereira/abacateiro	30	2	4	37	20.00	740.00	0.0	324.18	300.00	8.1
Papateira	3	2	4	18	15.00	270.00	0.0	340.20	300.00	13.4
Coqueiro	50	10	4	32	20.00	640.00	0.0	901.12	750.00	20.1
Goiabeira	15	7	4	8	15.00	120.00	0.0	368.64	350.00	5.3
Ateira	10	5	4	11	30.00	330.00	0.0	264.63	250.00	5.9
Maracuja	3	2	4	11	40.00	440.00	0.0	266.20	250.00	6.5
Videira	120	10	4	13	30.00	390.00	0.0	329.45	300.00	9.8
Pessegueiro	11	6	4	27	30.00	810.00	0.0	413.34	400.00	3.3
Ananaseiro	3	2	4	2	50.00	100.00	0.0	40.00	25.00	60.0
Morangueiro	3	2	4	20	41.67	833.40	0.0	50.00	40.00	25.0
Maçanisqueira	49	10	4	9	10.00	90.00	0.0	487.62	450.00	8.4
Jamboleiro	50	10	4	7.5	10.00	75.00	0.0	346.50	0.00	100.0

Fases de plantas

1. Germinação;
2. Desenvolvimento vegetativo;
3. Reprodução/ Produtivo;
4. Envelhecimento.

**Annex D**  

---

**Announcement of the 1st CP  
in JN**

Prepared for:  
Administração Nacional de Estradas (ANE)  
Avenida de Moçambique, nº 1225, CP 403  
Tel.: +258-21476163 | Bairro Luís Cabral, Maputo

Prepared by:  
Enviestudos, Consultoria Ambiental e Serviços, Lda.  
Rua Viana da Mota nº 72 1º Andar  
Telef. +258843289330. Maputo, MOÇAMBIQUE

**Plano de Acção de Reassentamento Abreviado (ARAP)**

**Projecto de Reconstrução da Ponte sobre o Rio Natete,  
Distrito de Ribáuè, Província de Nampula**

**CONVITE PARA REUNIÃO DA SEGUNDA CONSULTA PÚBLICA**

O Governo de Moçambique (GoM), através da Administração Nacional de Estradas (ANE), com o apoio financeiro da Agência de Cooperação Internacional do Japão (JICA), pretende reconstruir a Ponte sobre o Rio Natete, na Província de Nampula. A implementação do Projecto poderá implicar afectações de pessoas, bens e/ou meios de subsistência, tornando necessário o desenvolvimento de um Plano Acção de Reassentamento Abreviado (ARAP), em cumprimento com o Decreto n.º 31/2012, de 8 de Agosto e das Directrizes de Salvaguardas Ambientais e Sociais da JICA.

Para dar seguimento ao processo, a **ANE e a Enviestudos, Lda, Consultor Ambiental do Projecto** convidam o público em geral a participar da Reunião da segunda Consulta Pública para apresentação dos resultados do levantamento físico e socio-económico do Projecto e da elaboração do ARAP **a ter lugar na Comunidade de Natethe, Localidade de Matharya, Posto Administrativo de Iapala, Distrito de Ribáuè, pelas 11.00 horas do dia 17 de Outubro de 2025.**

Para mais informações, favor de, contactar o Sr. Amad Gani através do 86-6378704 ou a Sra. Mara Bata da ANE pelo n.º 87-5880319.

Maputo, aos 30 de Setembro de 2025

5542

Annex E  

---

List of Participants of 1st  
PCM

Prepared for:  
Administração Nacional de Estradas (ANE)  
Avenida de Moçambique, nº 1225, CP 403  
Tel.: +258-21476163 | Bairro Luís Cabral, Maputo

Prepared by:  
Enviestudos, Consultoria Ambiental e Serviços, Lda.  
Rua Viana da Mota nº 72 1º Andar  
Telef. +258843289330. Maputo, MOÇAMBIQUE

Annex F  

---

Announcement of the 2nd  
CP in JN

## **Plano de Acção de Reassentamento Abreviado (ARAP)**

### **Projecto de Reconstrução da Ponte sobre o Rio Natete, Distrito de Ribáuè, Província de Nampula**

## **CONVITE PARA REUNIÃO DA SEGUNDA CONSULTA PÚBLICA**

O Governo de Moçambique (GoM), através da Administração Nacional de Estradas (ANE), com o apoio financeiro da Agência de Cooperação Internacional do Japão (JICA), pretende reconstruir a Ponte sobre o Rio Natete, na Província de Nampula. A implementação do Projecto poderá implicar afectações de pessoas, bens e/ou meios de subsistência, tornando necessário o desenvolvimento de um Plano Acção de Reassentamento Abreviado (ARAP), em cumprimento com o Decreto n.º 31/2012, de 8 de Agosto e das Directrizes de Salvaguardas Ambientais e Sociais da JICA.

Para dar seguimento ao processo, a **ANE e a Enviestudos, Lda, Consultor Ambiental do Projecto** convidam o público em geral a participar da Reunião da segunda Consulta Pública para apresentação dos resultados do levantamento físico e socio-económico do Projecto e da elaboração do ARAP **a ter lugar na Comunidade de Natethe, Localidade de Matharya, Posto Administrativo de Iapala, Distrito de Ribáuè, pelas 11.00 horas do dia 17 de Outubro de 2025.**

Para mais informações, favor de, contactar o Sr. Amad Gani através do 86-6378704 ou a Sra. Mara Bata da ANE pelo n.º 87-5880319.

Maputo, aos 30 de Setembro de 2025

5542

**Annex G**  

---

**List of Participants**

Prepared for:  
Administração Nacional de Estradas (ANE)  
Avenida de Moçambique, nº 1225, CP 403  
Tel.: +258-21476163 | Bairro Luís Cabral, Maputo

Prepared by:  
Enviestudos, Consultoria Ambiental e Serviços, Lda.  
Rua Viana da Mota nº 72 1º Andar  
Telef. +258843289330. Maputo, MOÇAMBIQUE

Prepared for:  
Administração Nacional de Estradas (ANE)  
Avenida de Moçambique, nº 1225, CP 403  
Tel.: +258-21476163 | Bairro Luís Cabral, Maputo

Prepared by:  
Enviestudos, Consultoria Ambiental e Serviços, Lda.  
Rua Viana da Mota nº 72 1º Andar  
Telef. +258843289330. Maputo, MOÇAMBIQUE