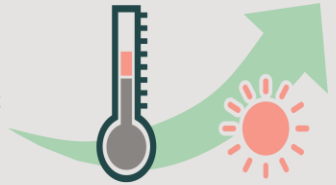


## The Importance of Climate Change Measures in realizing Human Security

The effects of climate change are causing fluctuations in the intensity and frequency of extreme weather, which in turn threaten people's lives and livelihoods. Unless actions are taken to address climate change, the economic and social impacts will increase and the situation is predicted to be worsen in the future, becoming a major threat to the human security of the international community.



## JICA's contribution through applying its Human Security approach

Developing countries are particularly susceptible to the negative impacts of climate change, and vulnerable populations find it difficult to cope with these effects. Therefore, JICA in solidarity with the international community and developing countries aims to enhance the capacity of developing countries to respond, striving to achieve human security through resilient and sustainable development in the face of the global challenge of climate change.

JICA will work on mitigation and adaptation measures to increase resilience to climate change, applying two approaches of human security; “protection” and “empowerment”. Specifically, JICA will support the development of climate change resilient societies by enhancing the adaptive capacity of vulnerable people in developing countries and their economic growth that minimizes greenhouse gas emissions through co-benefit climate change measures. JICA also promotes climate change action in developing countries by improving the capacity required for the formulation, implementation and monitoring of various plans related to climate change.

## Contributing to the SDGs



### SDGs Goal13 "Take urgent action to combat climate change and its impacts"

13.1: Strengthen resilience and adaptive capacity to climate-related disasters

13.2: Integrate climate change measures into national policies, strategies and planning

13.3: Build knowledge and capacity to meet climate change



Efforts to enhance children's nutrition through the production and consumption of vegetables in area susceptible to climate risks like drought. [Photo: JICA]



In flood-prone area from river overflow, riverbank protection was constructed. Furthermore, residents actively participate in the sustainable maintenance of the riverbank blocks.[Photo: Shinichi Kuno/JICA]