

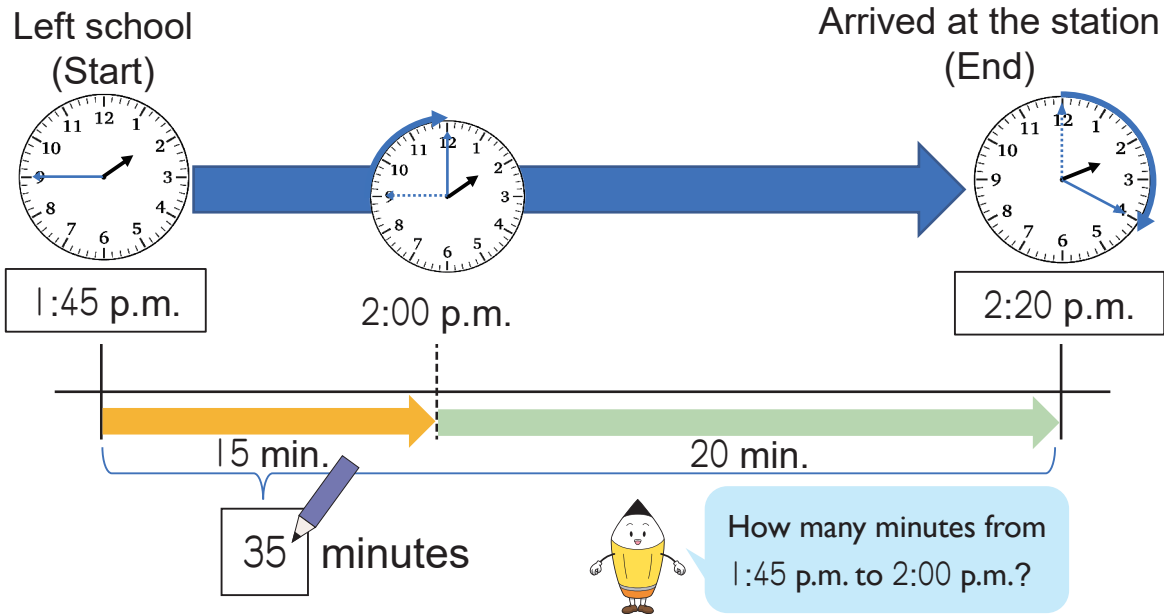
2 - 1

Time Points and Time Intervals

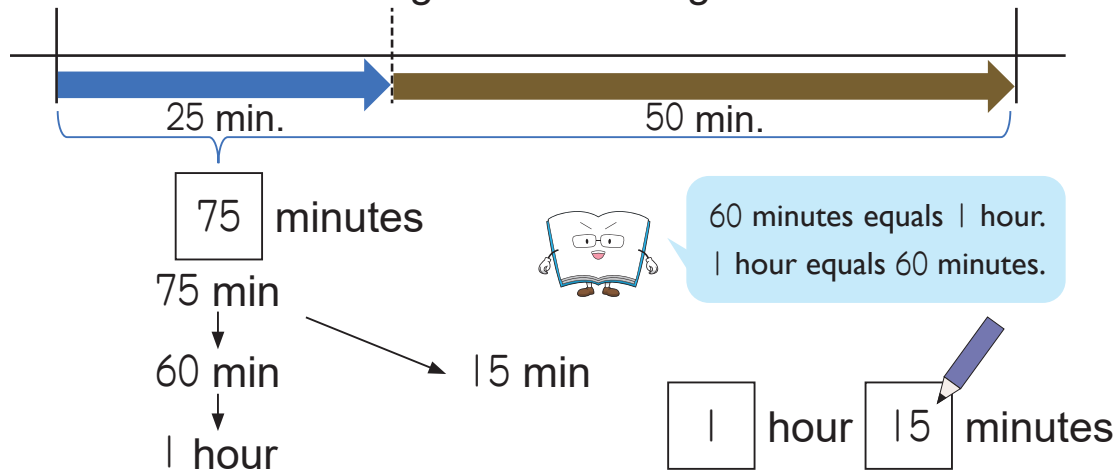
How to Find Time Points (1)

Example 1

- 1 A girl left school at 1:45 p.m. and arrived at the station at 2:20 p.m.. How long did it take to get there?

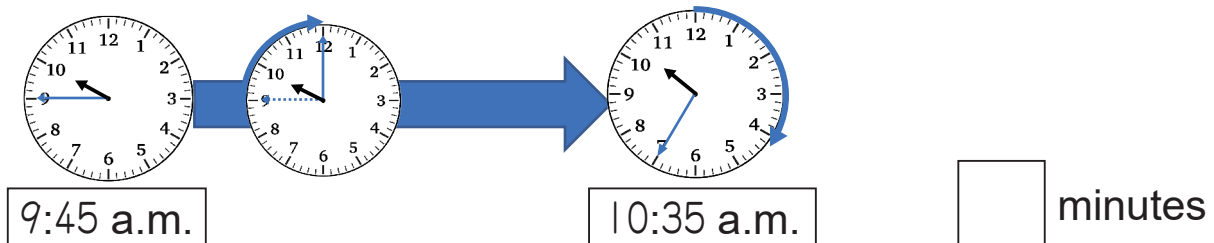


- 2 A boy walked 25 minutes and traveled 50 minutes by bus to go the cinema. How long did it take to get there?



- 1 How long did it take to get there in the following situations?

- 1 A man left his house at 9:45 and arrived at a café at 10:35.



- 2 A woman walked 35 minutes and traveled 55 minutes by bus to go to a hospital.



minutes = hour minutes

Example 2

- 1 What is the end time point?



How many minutes to 11:00 a.m.?
It is easy to think based on the hour.



11:10 a.m.

- 2 How long is the time interval?
From 9:15 a.m. to 10:25 a.m.

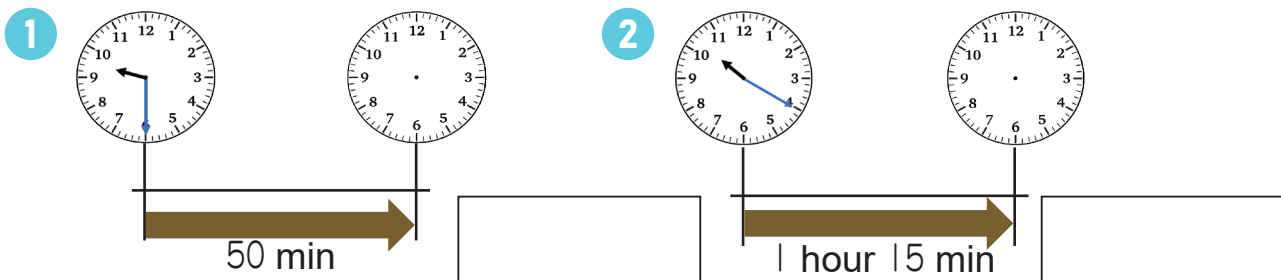


As you learnt in grade 2, a time interval means working out how long something takes.



70 minutes = hour 10 minutes

- 2 What is the end time point?



- 3 How long is the following time intervals?

- 1 From 11:45 a.m. to 12:50 p.m.

minutes = hour minutes

- 2 From 1:10 p.m. to 4:20 p.m.

hour minutes

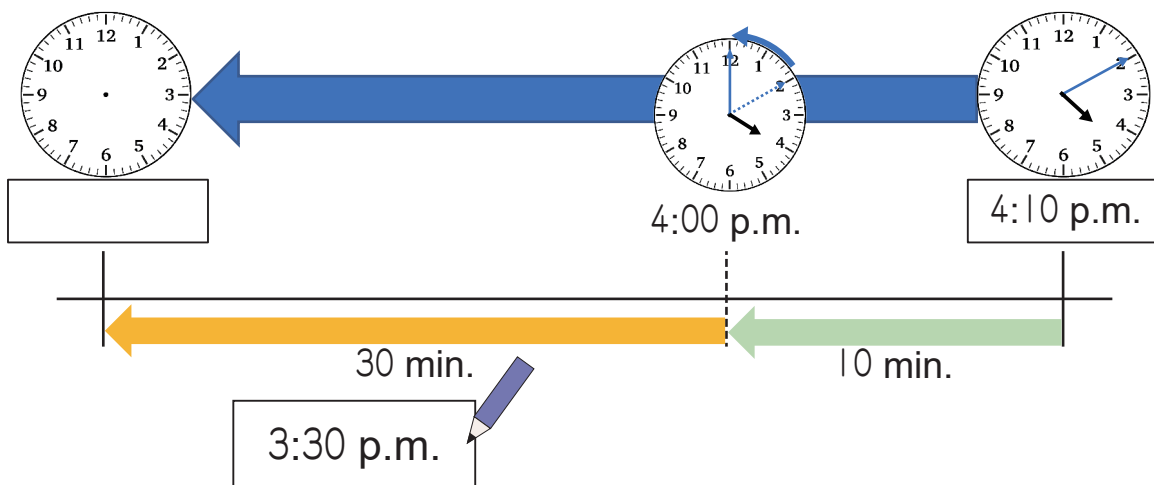
2 - 2

Time Points and Time Intervals

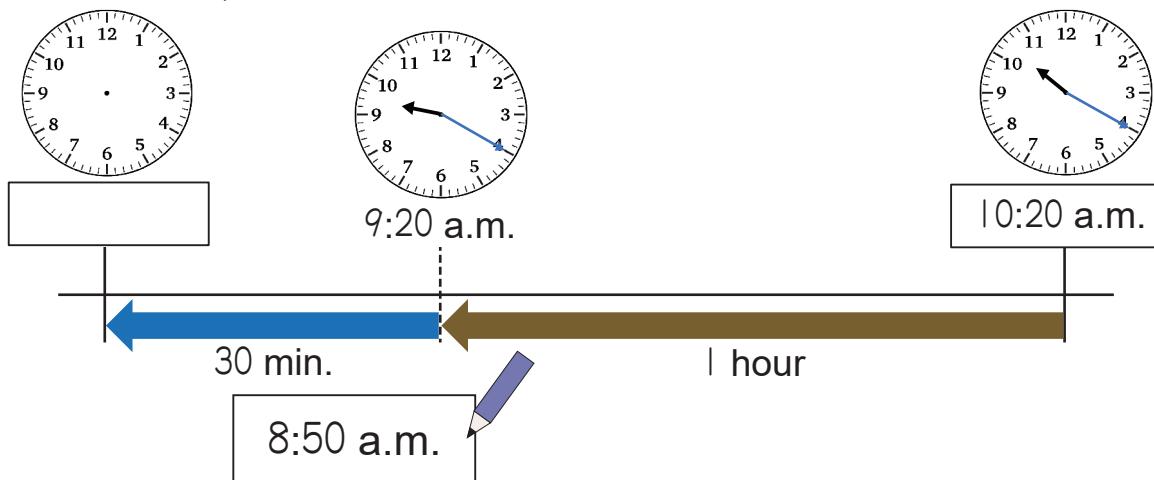
How to Find Time Points (2)

Example

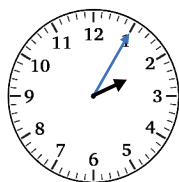
- 1 A boy left school and walked for 40 minutes. He arrived at his house at 4:10 p.m. What time did he leave school?



- 2 A music class finishes at 10:20 a.m. If the class lasts 1 hour 30 minutes, what time does it start?



- 1 It takes 20 minutes to get from a girl's house to the post office. To arrive at the post office at 2:05 p.m., what time should she leave her house?



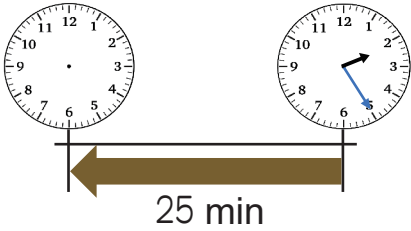
- 2 If you visit a park and stay there for 45 minutes until 10:20 a.m., what time should you arrive there?



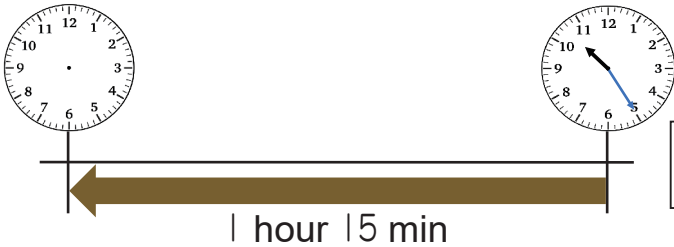
Example 2

Find the following time points.

- 1 It is 25 minutes before 2:25 p.m.



- 2 It is 1 hour 15 minutes before 10:25 a.m.



- 2 Find the following time points.

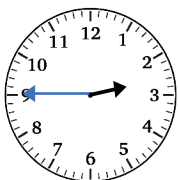
- 1 It is 40 minutes before 8:50 a.m.

- 2 It is 25 minutes before 4:10 p.m.

- 3 It is 3 hours before 4:25 p.m.

- 4 It is 2 hours before 1:45 p.m.

- 5 It is 1 hour 50 minutes before 2:45 p.m.

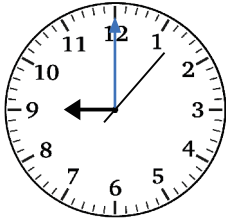


2 - 3

Time Points and Time Intervals

Shorter Time

Instruction Shorter time than 1 minute.



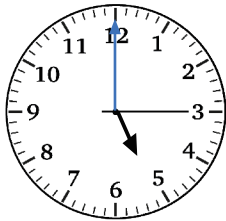
- There is a unit of time shorter than a minute. It is called a **second**.
- The third hand shows seconds and goes around just like the other hands.



$$1 \text{ minute} = 60 \text{ seconds}$$

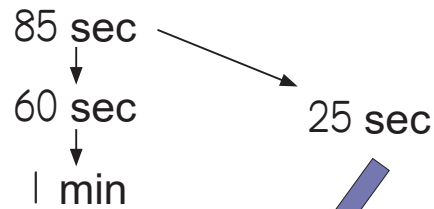
Example

1 How many seconds does the clock show?



seconds.

2 How many minutes and seconds is 85 seconds?



minute seconds.

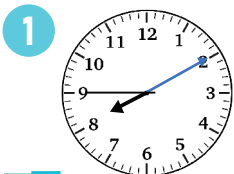
3 How many seconds is 1 minute?

$$1 \text{ minute} \times 60 \text{ seconds} = \text{ seconds.}$$

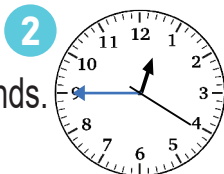


Close your eyes and count 10 seconds in your head. Experience how long 10 seconds is.

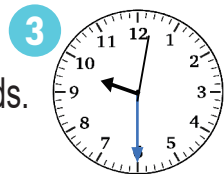
1 How many seconds do the following clocks show?



seconds.



seconds.



seconds.

2 How many seconds and minutes are the following units of time?

1 100 seconds

minute seconds.

2 2 minutes

seconds.

3 How long does it take to clap 10 times?

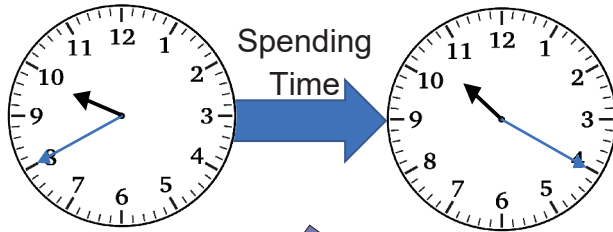


2 - 4

Time Points and Time Intervals

Making Time Problems

Example Choose the story that indicates the following picture.



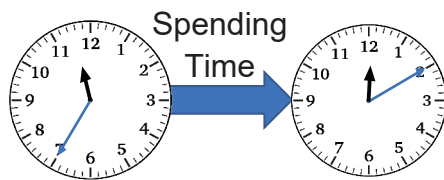
Answer B

A A Mathematics class starts at 8:40 a.m. and finishes at 9:20 a.m.

B A bus started at 9:40 a.m. and arrived at the last stop after 40 minutes.

Choose the story that indicates the following picture.

1

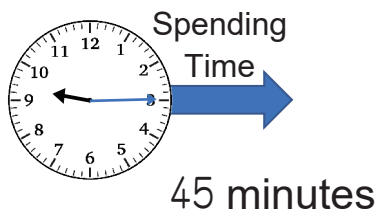


Answer

A I left my house at 11:35 p.m. and arrived at school after 35 minutes.

B It's 11:35 a.m. Lunchtime starts at 12:10 p.m. I have to wait for 25 minutes more.

2

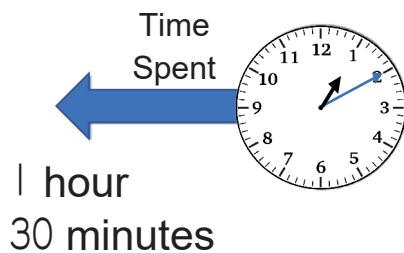


Answer

A I miss a bus, and the next bus will come at 10:00 a.m.

B It's 9:15 a.m. I have to go at 9:45 a.m. to pick up my mother.

3



Answer

A A girl attended a science class at 12:40 p.m.

B A boy started his house at 11:40 a.m.

2 - 5

Time Points and Time Intervals

Review

1 Find the following time points.

1 It is 30 minutes after 7:30 a.m.

2 It is 45 minutes before 2:15 p.m.

3 It is 1 hour 15 minutes before 1:05 p.m.

2 Fill in the with the appropriate numbers.

1 60 seconds = minute **2** 3 minutes = seconds

3 150 seconds = minute seconds

4 280 seconds = minute seconds

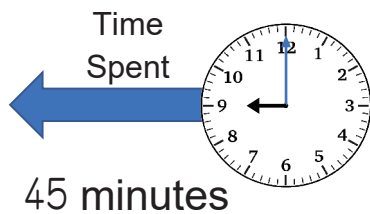
3 Fill in the with the appropriate unit for time.

1 The amount of time you sleep in one day.

2 The time it takes you to take a single breath.

3 The length of a TV news show.

5 Choose the story that indicates the following picture.



Answer

A A library opens at 9:00 a.m. I should leave my house at 8:45 a.m.

B A language class started at 8:15 a.m. It was 45 minutes ago.