

The Project for Enhancing National Forest Monitoring System for the Promotion of Sustainable Natural Resource Management

Overview

More than 20% of Botswana’s land surface is covered by forest, which is featured not only by its biodiversity and habitats for various rare species, but also by its abundance of useful plants serving as important source of income for the local population. However, the country has been losing its forest area significantly in recent years, due to forest fires and expanded pastures.

Sustainable forest management as responding measures to such situation requires forest information as its foundation.

The project supports the staff of the Department of Forestry and Range Resources (DFRR) in establishing methodology for the national forest inventory and in developing Forest Geographic Information System (GIS) Database.

Through such efforts, it is expected that the information acquired through forest monitoring will be shared among all the stakeholders including government agencies and local population, and sustainable forest management in Botswana will be promoted.



Project Site

BOTSWANA (Whole country)

Implementing Organization

Ministry of Environment, Natural Resources Conservation and Tourism

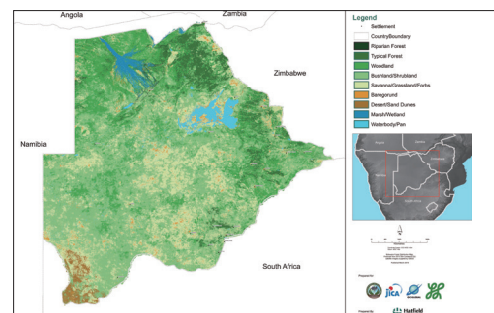
Duration

Jul. 2013 – Dec. 2017

Purpose

To update the status of forests adequately through forest monitoring conducted regularly by the staff of the Department of Forestry and Range Resources (DFRR), using a national forest monitoring system.

Activities/Outputs



Since its launch in 2013, the project has been steadily progressing, and a nationwide forest distribution map that the project developed was published in June 2016, allowing us for the first time to have more precise information on the distribution of forests in Botswana. The project period was extended for another one and a half years in June 2016 so that the project can continue to assist in sharing these data on forests with the related national and local government agencies, as well as in institutionalizing a system of using the data for forestry management including community-participatory forest management. Through these activities, the project is expected to contribute to developing sustainable forest management system in Botswana based on effective uses of organized data. The expected outcomes of the project are:

Organizing forest information system.

Supporting development of a forest base map for the entire country, methodology for the national forest inventory, and Forest Geographic Information System (GIS) Database, as well as formulating a national forest monitoring plan, and creating a system.

Implementing forest conservation activities using national forest monitoring system.

Sharing information on sustainable forest management, preparing materials, controlling of forest fires, and promoting community-participatory management of natural resources through utilization of the national forest management system.

Sharing knowledge and experiences acquired from the project.

Sharing knowledge and experiences of the project nationally and internationally in coordination with other related agencies including Southern African Development Community (SADC) based in Botswana.