

Country Profile

Area: 753,000 km² (about twice the size of Japan)

Population: 19.61mil (annual growth rate (2010-22) 3.4%) (2022 Census) **(19th in SSA)**

Ethnic groups: 73 tribes (Tonga, Nyanja, Bemba, Lunda)

Religion: Christianity (nearly 80%), others (e.g. Islam, Hinduism, traditional religions)

Languages: English (official), Bemba, Nyanja, Tonga

GDP: 21.3bil (2015)→18.1bil (2020)→28.2bil (2023) (nominal, WB) **(13th in SSA)**

Real GDP growth: -2.8% (2020) → 4.6% (2021) → 5.8% (2023) (WB)

GNI per capita: 1,330 (2010)→1,540 (2015)→

1,130USD (2020)→1,369USD (2023) (WB)

=Lower-Middle Income country in 2024 (WB)

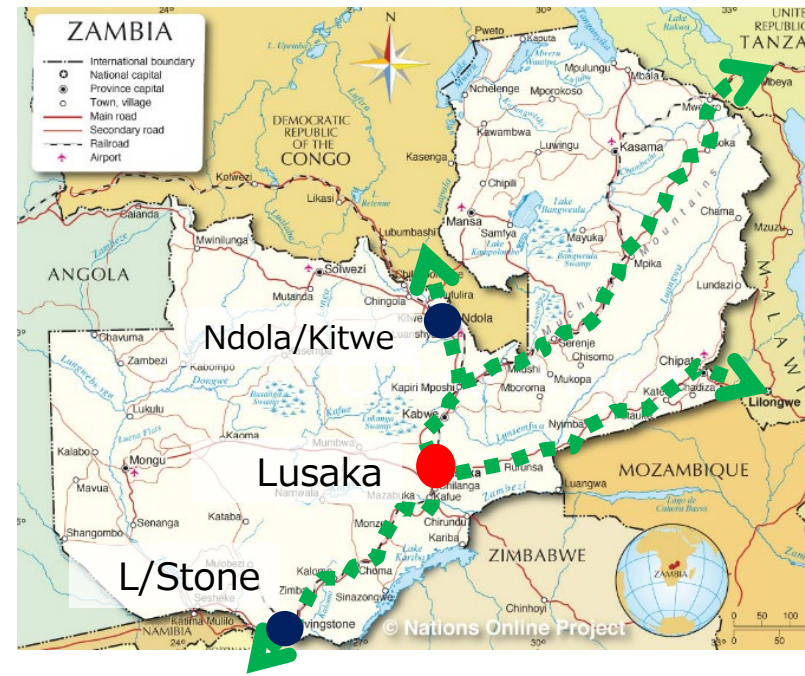
HDI: 0.562 (2015) → 0.565 (2021) **(16th in SSA)** (UNDP)

Unemployment Rate: 13.2% (2010) → 8.3% (2015) → 5.9% (2023) (WB)

Poverty Rate: 62.0% (2022, WB)

Gini Coefficient: 55.9 (2015, WB)

Geopolitics: Landlocked country surrounded by 8 countries. Lusaka, the capital city, is located at the nexus of international corridors, including the Nacala Corridor and the North-South Corridor connecting to Durban.



Development Policy and Planning

National Long-term plan “Vision 2030”

The goal is to become “A Prosperous Middle Income Nation by 2030”, with specific targets such as to reduce national poverty head count to less than 20% of the population.

Medium-term plan “Eight National Development Plan 2022-2026”

“Socio-economic transformation for improved livelihoods” and the key development areas are;

- 1) **Economic transformation and job creation:** increased trade and private sector investment for higher value addition and diversification. Agriculture, mining, tourism and manufacturing are identified as key sectors with reference to ICT promotion.
- 2) **Human & social development:** improving access to education, health, water and sanitation in order to develop a highly skilled and healthy population.
- 3) **Environmental sustainability:** promoting green growth for sustainable use of nature and enhanced resilience to climate change.
- 4) **Good governance environment:** promoting the rule of law and constitutionalism.

Politics and Diplomacy

Political System

- ◆ Independent from the UK in 1964, Zambia introduced a multi-party system in 1991 shifting from a one-party system for about 20 years. Since then, democratic politics has taken root, having survived seven general elections without major disruption.
- ◆ H.E Hakainde Hichilema under the UPND was elected as the 7th President of GRZ in August 2021, succeeded from Mr. Edger Lungu under the PF. The next presidential election is scheduled to be held in Aug 2026.

Diplomacy

- ◆ Strives to maintain good relations and peace diplomacy with neighbouring countries, contributing to peace and stability in the Southern African region. (i.e. mediating the Angolan Peace Accord (1994), promoting the Congolese People's Peace Accord (1999), open to receiving refugees from Angola and other countries).
- ◆ A key member of the SADC and COMESA (HQ in Lusaka).
- ◆ H.E. the President Hichilema paid the official visit to Japan in Feb 2025 and the Japan-Zambia Investment Agreement was signed.

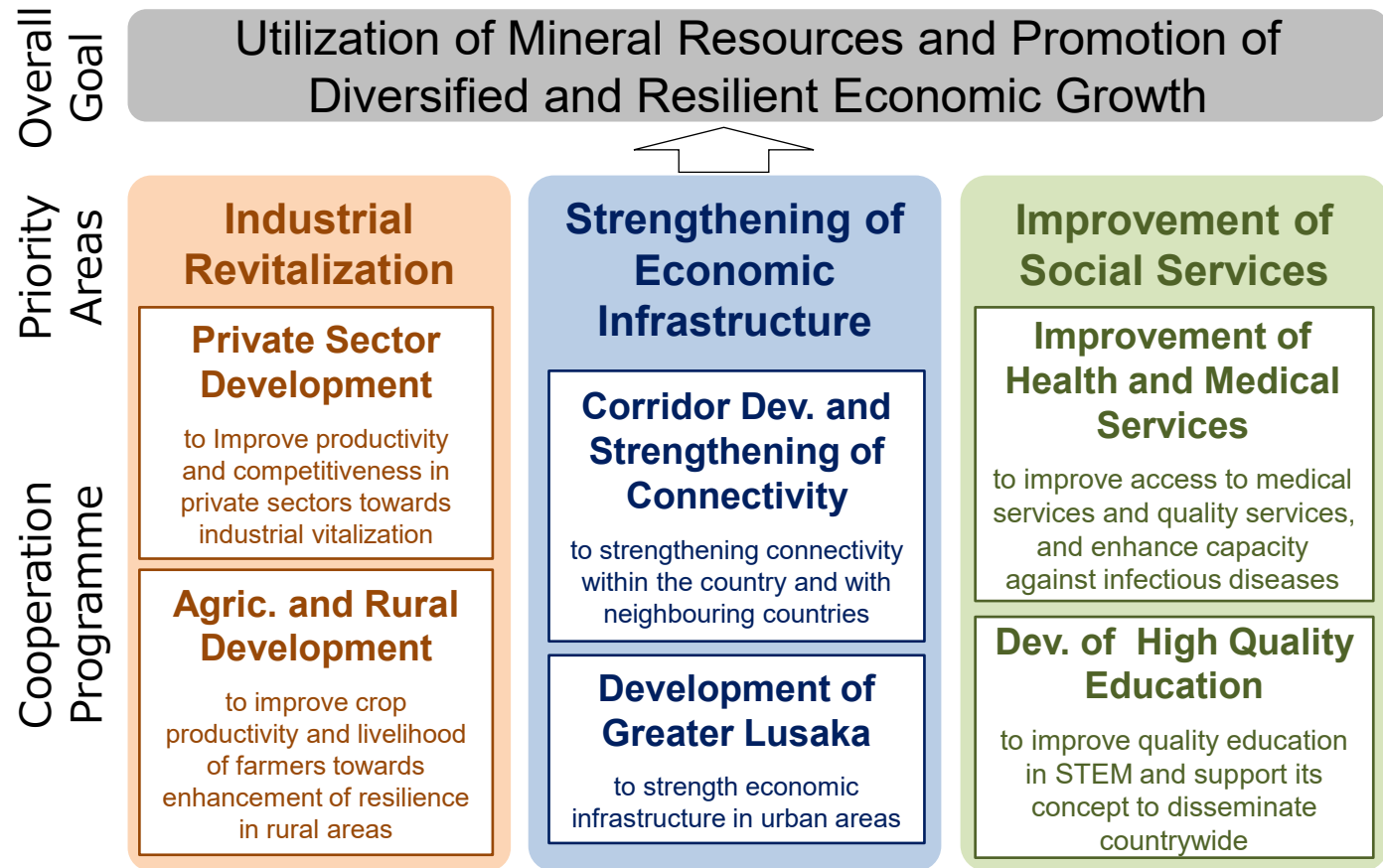
Economy and Finance

- ◆ Monoculture economy dependent on copper (approx. 60% of export values).
- ◆ GDP growth has gradually declined since 2010, when it reached the highest of 10.3% (2010), and fell to -2.8% in 2020 due to the COVID-19, but recovered to over 4% after 2021, mainly because of high copper prices in international market.
- ◆ Debt has grown due to budget deficits and huge infrastructure investment; defaulted on Euro bond in Nov 2020 and applied for debt restructuring to the IMF in Dec. 2020 and to the Common Framework (CF) in Feb 2021; in Aug 2022, agreed a 3-year Extended Credit Facility of apprx. USD1.3bil in Dec 2022 with IMF (extended to apprx. USD1.7bil in Jun 2024). In June 2023, Zambia has agreed on a debt treatment of USD63bil with the official creditors, and USD35bil with euro-bond holders.

Indicator	2019	2020	2021	2022	2023
Real GDP growth (%)	1.4	▲2.8	6.2	5.2	5.4
Fiscal balance (% of GDP)	▲11.0	▲13.8	▲8.1	▲8.1	
Current account balance (milUSD)	141	2,140	2,630	1,090	▲583
CPI (%)	9.2	15.7	22.0	11.0	10.9
Foreign exchange reserves (bilUSD)	1,449	1,204	2,754	2,967	N/A
Outstanding external debt (milUSD)	27.25	26.69	24.05	28.70	

(Fiscal balance sourced by AfDB, other indicators sourced by WB)

Country Development Cooperation Policy



Summary

Notable Points

- ◆ Promoting cooperation with a view to the role of Regional Hub (Centre of Excellence) (e.g. OSBP, infectious disease control, veterinary medicine, lesson study methods, etc.).
- ◆ Promoting development of cross-border infrastructure (bridges, OSBPs, etc.) and major trunk roads (Lusaka, Kitwe, Livingstone, etc.) to support logistics networks within the Southern African region.
- ◆ In the agric. sector, the focus is on rice cultivation and small-scale irrigation. It has also been cooperating with the University of Zambia over 40 years, contributing to veterinary training and zoonosis control.
- ◆ Supporting the policy of local integration of former refugees, including improving the livelihoods and building local integration systems, in cooperation with UNDP and other partners.
- ◆ JICA Volunteers in collaboration with Hiroshima Univ. with a total of 38 volunteers dispatched so far.

Other Development Partners

- ◆ The US occupies about 39% of OECD cooperation amount (2020), followed by the UK and EU, while non-OECD countries such as India and China are also active.
- ◆ China: significant presence both in public and private sector in various fields (e.g. international airports, international conference centres, "Confucius Academy" in UNZA, mining development and tourism accommodation) and has co-chaired the Creditors Committee with France.

ODA performance

	2018	2019	2020	2021	2022	Cum. Total
Technical Cooperation (bilJPY)	12.7	11.0	16.9	12.4	16.9	724.6
Trainees received (persons)	104	60	276	256	181	5,073
ABE/SDGs students (persons)	1	1	3	2	5	40
Dispatch of Experts (persons)	50	8	68	93	110	1,707
Survey Missions (persons)	32	12	37	30	66	2,328
JICA Volunteer (persons)	23	0	1	6	14	1,628
Grants (bilJPY)	0	26.5	0	34.7	17.3	903.0
ODA Loan (bilJPY)	6.8	0	0	0	0	464.8

- ◆ T/C: peaked in 2018, but still has an annual scale of 1bilJPY.
- ◆ Grants: synergy with T/C in agriculture, health sector, etc.
- ◆ ODA Loan: new loans suspended after Zambia's default in Nov. 2020.
- ◆ JICA Volunteer: started deploying in 1970. Has a long history in Africa.

Major Recent Projects

Sector	Project Name	Period
Agric.	Market-Oriented Rice Development Project (MOReDeP)	2019.10-2025.9
	Expansion of Community-based Smallholder Irrigation Development Project (ECOBSI)	2018.12-2024.2
	Clinical Studies Enhancement Project for School of Veterinary Medicine, University of Zambia	2021.9-2025.9
	Southern Africa Agriculture Value Chain Enhancement Project	2021.3-
	Zambia Marumori rural community development project through market oriented farming	2021.2-2024.10
PSD	Advisor for Industrial Promotion and Entrepreneurship Development	2023.9-2025.9
Education	Improvement of Pedagogical Content Knowledge of Mathematics and Science Educators in SMASE AFRICA	2021.7-2025.3
Health	Project for Strengthening Management Capacity of General Hospitals in Lusaka District	2021.5-2026.5
	Project for the Epidemiological Research on Zoonotic Virus in Africa	2019.6-2024.5
	Project for Upgrading Health Centres to District Hospitals in Copperbelt Province	2020.7-.
Infra.	Project on Bridge Maintenance Capacity Building in Zambia (phase II)	2019.3-2024.10
	Project for Capacity Dev. for Smooth Operation of OSBPs on the North-South Transport Corridor	2020.11-2025.3
Sanitation	Lusaka Clean City Project	2022.4-2026.4
Others	Projects to support local integration of former refugees	2020.3-2025.1

Major Projects by sectors

Agriculture

Market-Oriented Rice Development Project (MOReDeP) (TCP)

- **Period**
2019.10~2025.9
- **Implementing Agency**
Ministry of Agriculture

● **Summary**
The project aims to promote the production of rice as a cash crop throughout Zambia by improving cultivation techniques, disseminating technologies through formation of rice clusters, and improving rice farmers' access to markets (Rice-SHEP). It aims to increase rice productivity, thereby contributing to raising farmers' income from rice production.



Clinical Studies Enhancement Project for School of Veterinary Medicine, University of Zambia (TCP)

- **Period**
2021.9~2025.9
- **Implementing agency**
UNZA-SVM
- **Summary**

The project aims to foster quality veterinarians who will be responsible for early detection and management of livestock diseases by formulating plans to improve lectures and practical training related to clinical education at the UNZA-SVM, strengthening the teaching skills of faculty members, and improving the management of the attached veterinary hospital.



Private Sector Development

National KAIZEN Project Phase 2 (TCP)

- **Period**
Jul 2017 - Jan 2022
- **Implementing Agency**
KAIZEN Institution of Zambia (KIZ)

● **Summary**
To develop a system for the sustainable dissemination and expansion of kaizen by strengthening the operational capacity of KIZ, which it helped to establish in Phase 1. The project contributes to the improvement of quality and productivity in the private and public sectors.



SDGs Business Verification Survey for Sustainable Pulp Production from Banana Stems (Private Partnership Project)

- **Period**
2024 - 2026
- **Japanese Company**
One Planet Café Ltd.

● **Summary**
Verification survey on pulp production from organic banana stems with the aim of developing business and eventually contributing to improving the income of small-scale farmers in the Zambia and forest conservation.



One Planet Paper® (Envelop)

Major Projects by sectors

Infrastructure

Kazungula Bridge & OSBP Facilities Construction (ODA Loan)

- **Period**
Oct 2012 - Jan 2022
- **Implement Agency**
Road Development Agency(RDA)



● **Summary**
To construct a bridge, access road and One Stop Border Post(OSBP) facilities on the Zambezi River located on the Botswana-Zambia border along the North-South Corridor. Thereby improving transportation efficiency and contributing to improved logistics and economic development in the areas surrounding.

Bridge Maintenance Capacity Building Project Phase II (TCP)

- **Period**
Mar 2019 – May 2025
- **Implement Agency**
RDA, University of Zambia(UNZA)



● **Summary**
To improve bridge maintenance operations by strengthening daily operations, repair and inspection techniques related to bridge maintenance, thereby contributing to improving the condition of bridges under the jurisdiction of RDA. In addition to this project, long-term students will be accepted under the Road Asset Management Platform.

Social Development

Improvement of Pedagogical Content Knowledge of Mathematics and Science Educators in SMASE Africa (Training)

- **Period**
Jul 2021 - Mar 2025
- **Implementing Agency**
Ministry of Education

● **Summary**
The programme aims to disseminate the experience and knowledge of 'Lesson Study' that has been undertaken in Zambia over many years to other African countries. The National Science Centre (NSC) under the Ministry of Education will play a central role in the implementation of the training.



Project for Strengthening Management Capacity of the General Hospitals in Lusaka District (TCP)

- **Period:** May 2021 - May 2026
- **Implementing Agency**
Ministry of Health

● **Summary**
The project is to strengthen the hospital management capacity to improve the quality of services at the five hospitals in Lusaka constructed by JICA Grant by enhancing problem-solving capacity, the capacity of infection prevention control, stock management and facility maintenance, and coordination among relevant agencies.



History

Apr. 1970	Agreement for the dispatch of JICA Volunteer. In the same year, JICA Volunteer office is opened and the first six volunteers (Judo) are dispatched.
Jul. 2016	Amendment of JICA Volunteers Arrangement
Mar-Apr 2020	Due to the COVID-19 pandemic, 68 volunteers (incl. their family members) and over 140 JICA personnel were evacuated to Japan.
Apr 2021.	Resume JICA volunteer programme
As of Sep. 2024	<ul style="list-style-type: none"> 29 volunteers in deployment, 21 to be deployed, 19 in recruitment Cumulative total of 1,642 dispatched (Male: 1,086, Female: 556)

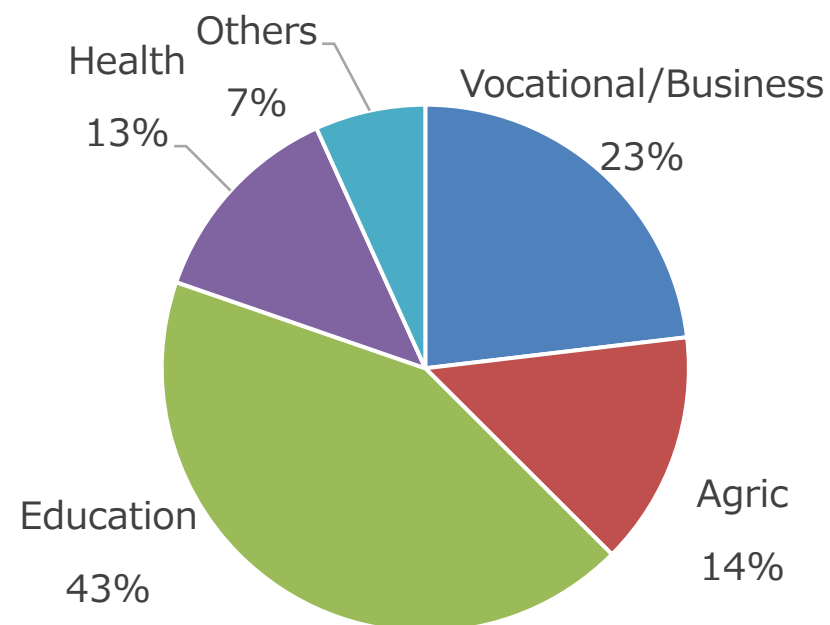
Programme Policy

To dispatch volunteers focusing on two pillars "Industrial Revitalization" and "Improvement of Infrastructure and Social Services to Support Economic Activities" based on the Country Development Cooperation Policy.

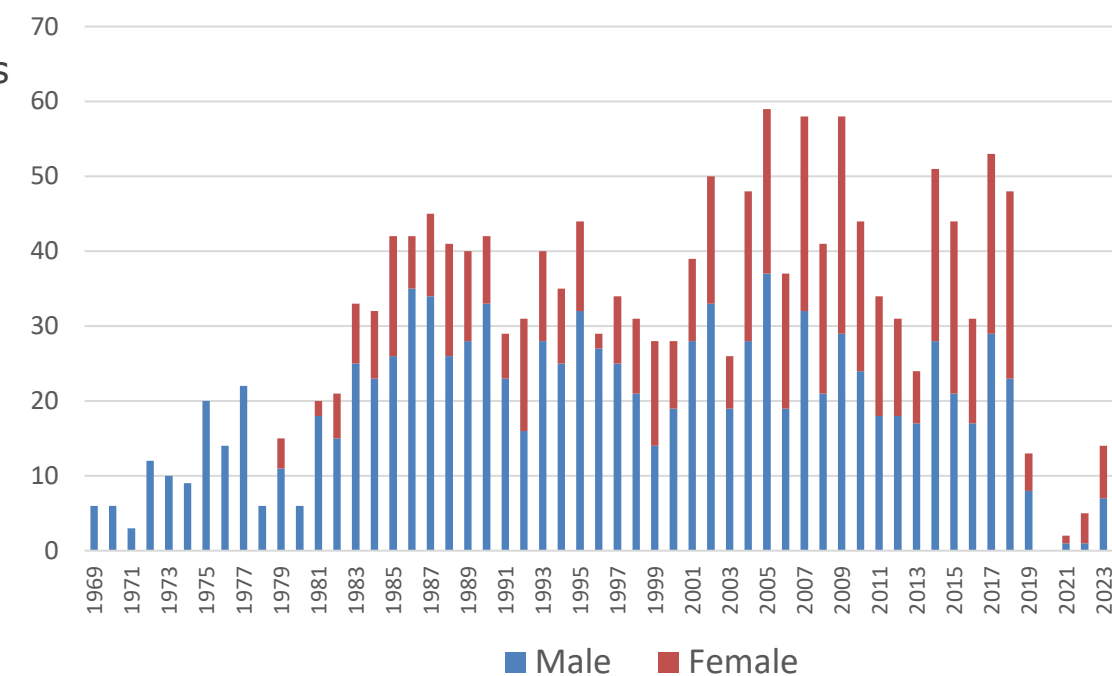
1. Improving the business management of Micro, Small and Medium Enterprises.
2. Agricultural development support
3. Developing quality infrastructure to support economic activity (waste management and water sectors)
4. Developing quality human resources to support economic activities (vocational training, education, health)
5. Support for Former refugees
6. Human capital Development (e.g. Japanese language education, etc.)

Dispatch Record

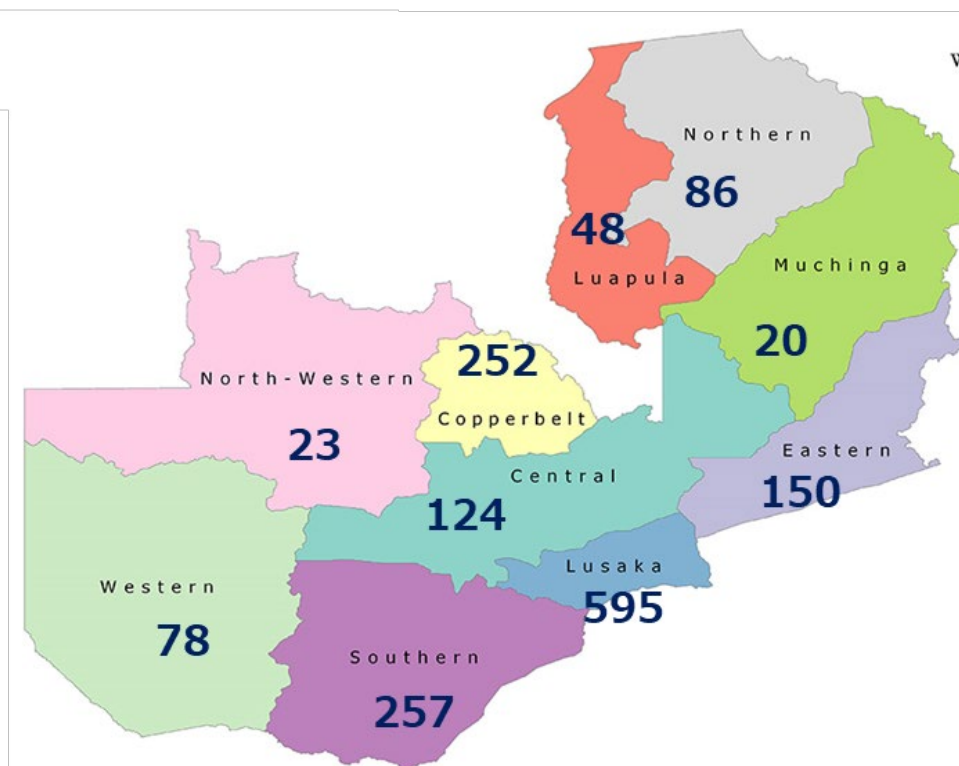
Proportion of Volunteers by sector



Number of Volunteers by year



Distribution of Volunteers by Province



Number of Volunteers by Province

