



**Introduction of  
the Forest Governance Initiative  
and  
JICA-JAXA Forest Early Warning System in the Tropics  
(JJ-FAST)**

*Masato Hayashi & Izumi Nagatani  
Japan Aerospace Exploration Agency (JAXA)*

# 1. Forest governance initiative

2



MOU between JICA-JAXA was signed in Apr. 2014 to contribute global issue using Japanese satellite technologies.



The new initiative for improvement of forest governance was officially released at the COP 21 in Dec. 2015.

**The initiative aims to contribute to the global tropical forest and biodiversity conservation and climate change mitigation by using satellite technology and multi-stakeholder partnerships.**

# 1. Forest governance initiative

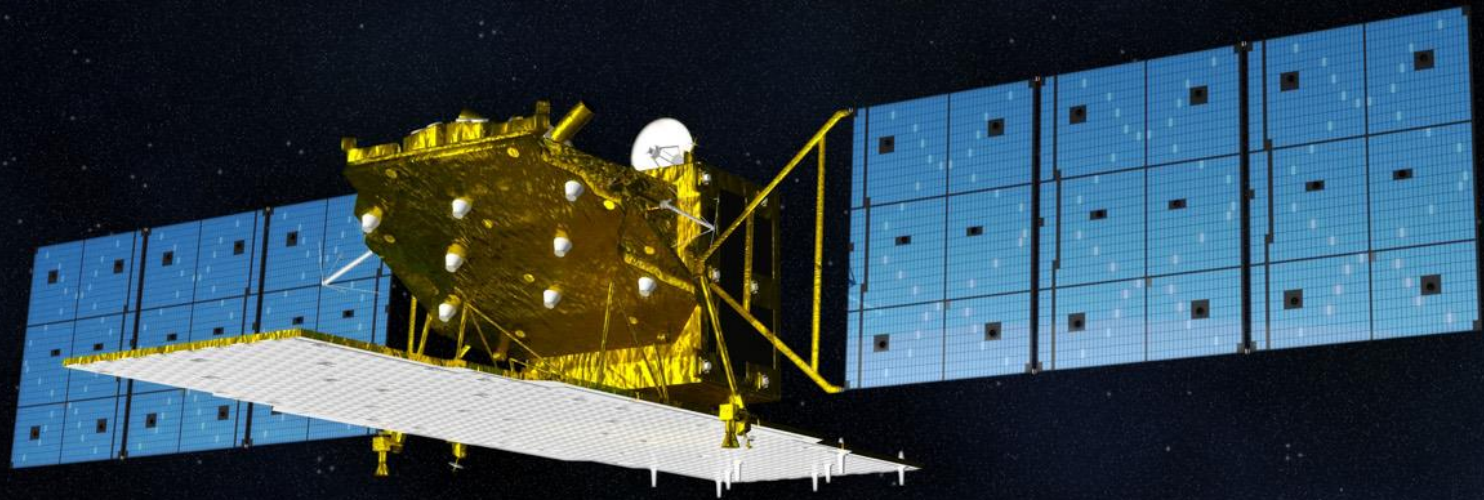
3



## 2. Deforestation monitoring: JJ-FAST

### 3. Satellite data: ALOS-2/PALSAR-2

5



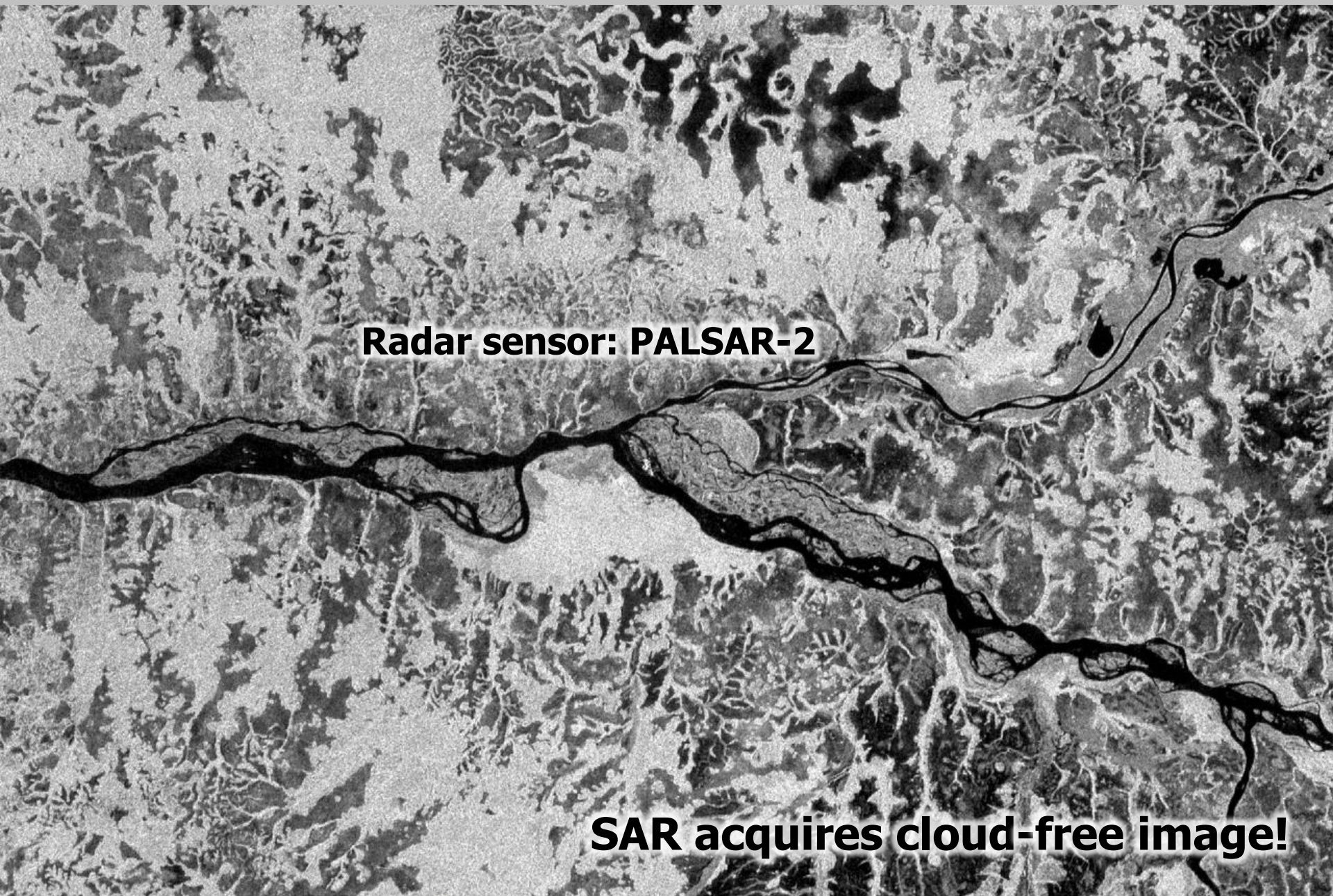
Orbit altitude: **628km**

Launch: **May 24, 2014**

Lifetime: **5 years (7 years)**

Sensor: **Synthetic Aperture Radar  
(SAR)**

Observation mode: **Spotlight  
Strip  
ScanSAR**



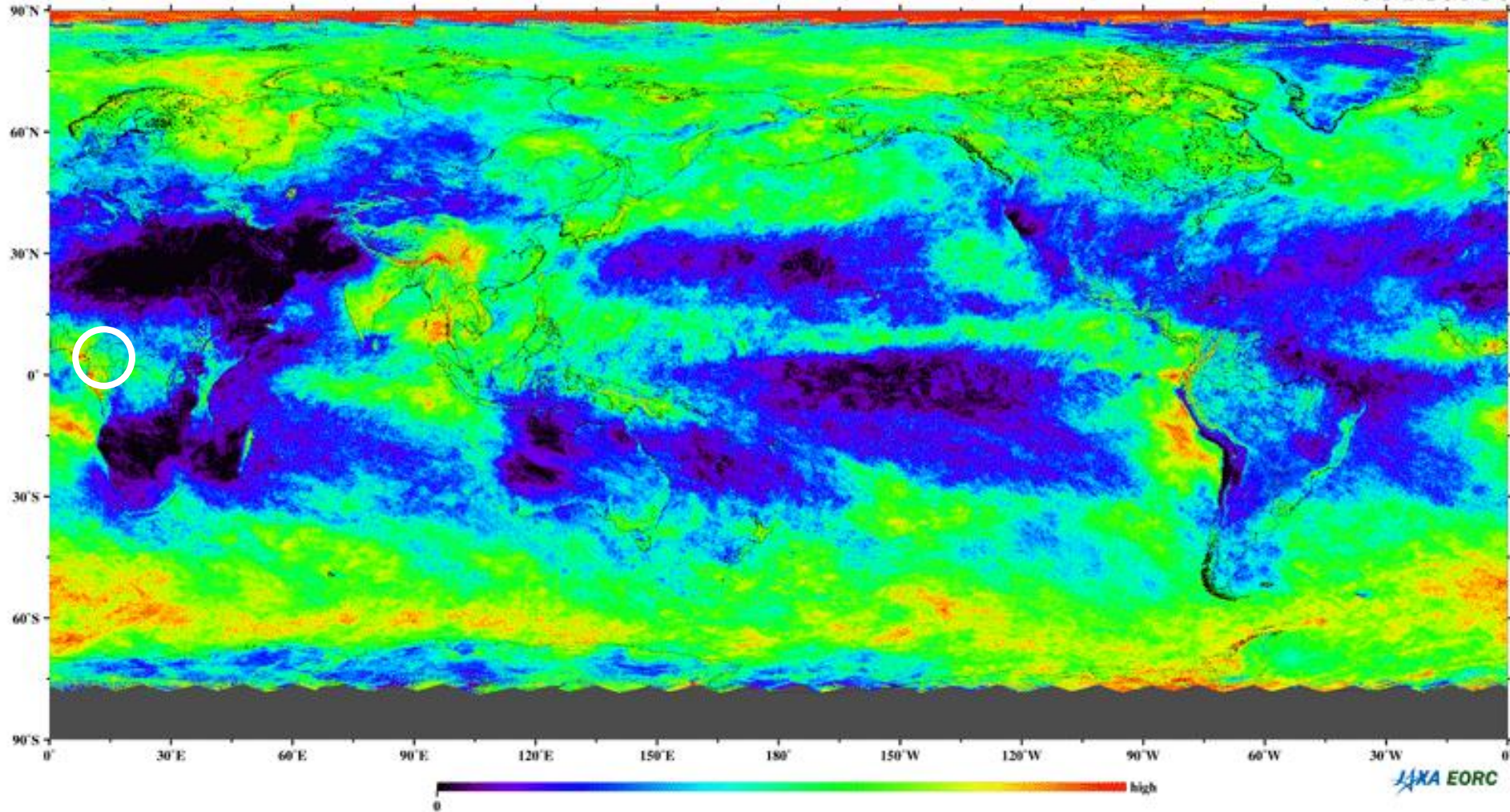
**Radar sensor: PALSAR-2**

**SAR acquires cloud-free image!**

# 4. Influence of cloud cover

Global cloud-cover map

2016.09.

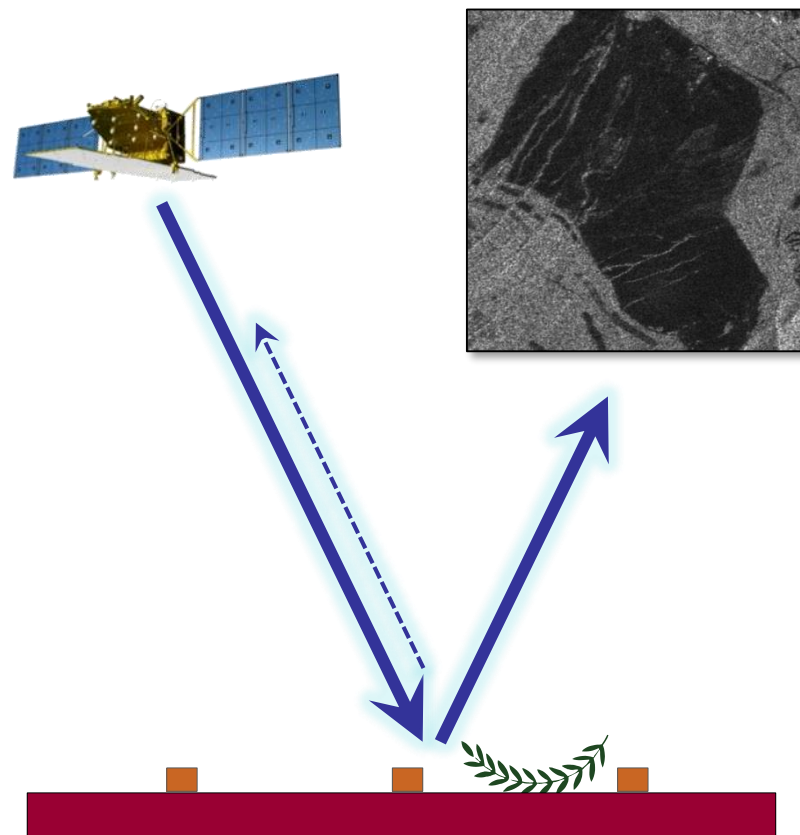
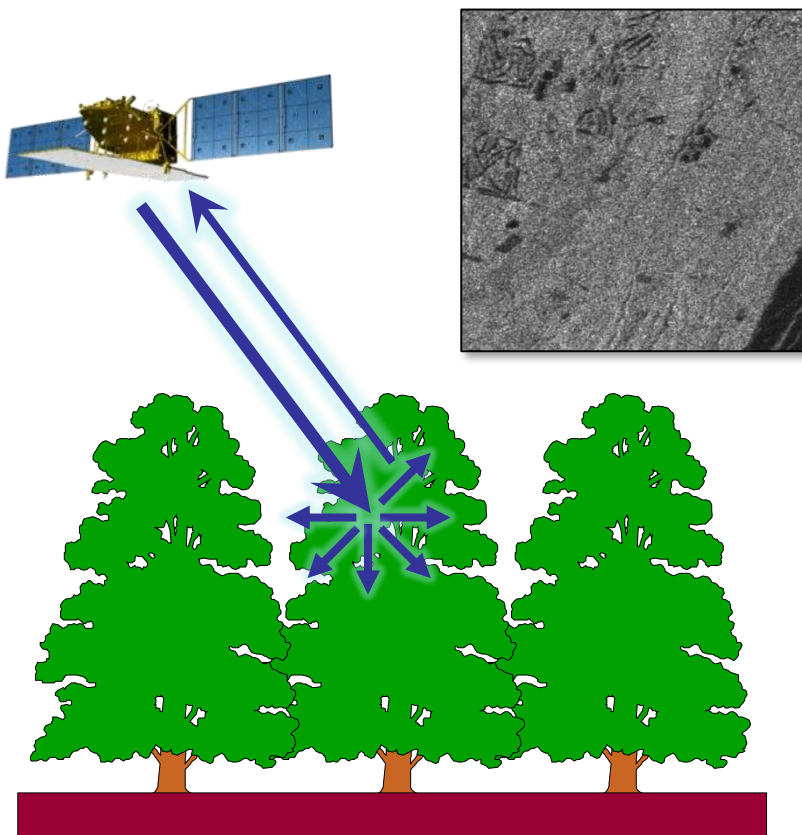


**Vast forests are covered by cloud!**

# 5. Deforestation detection

**Forest: Bright**

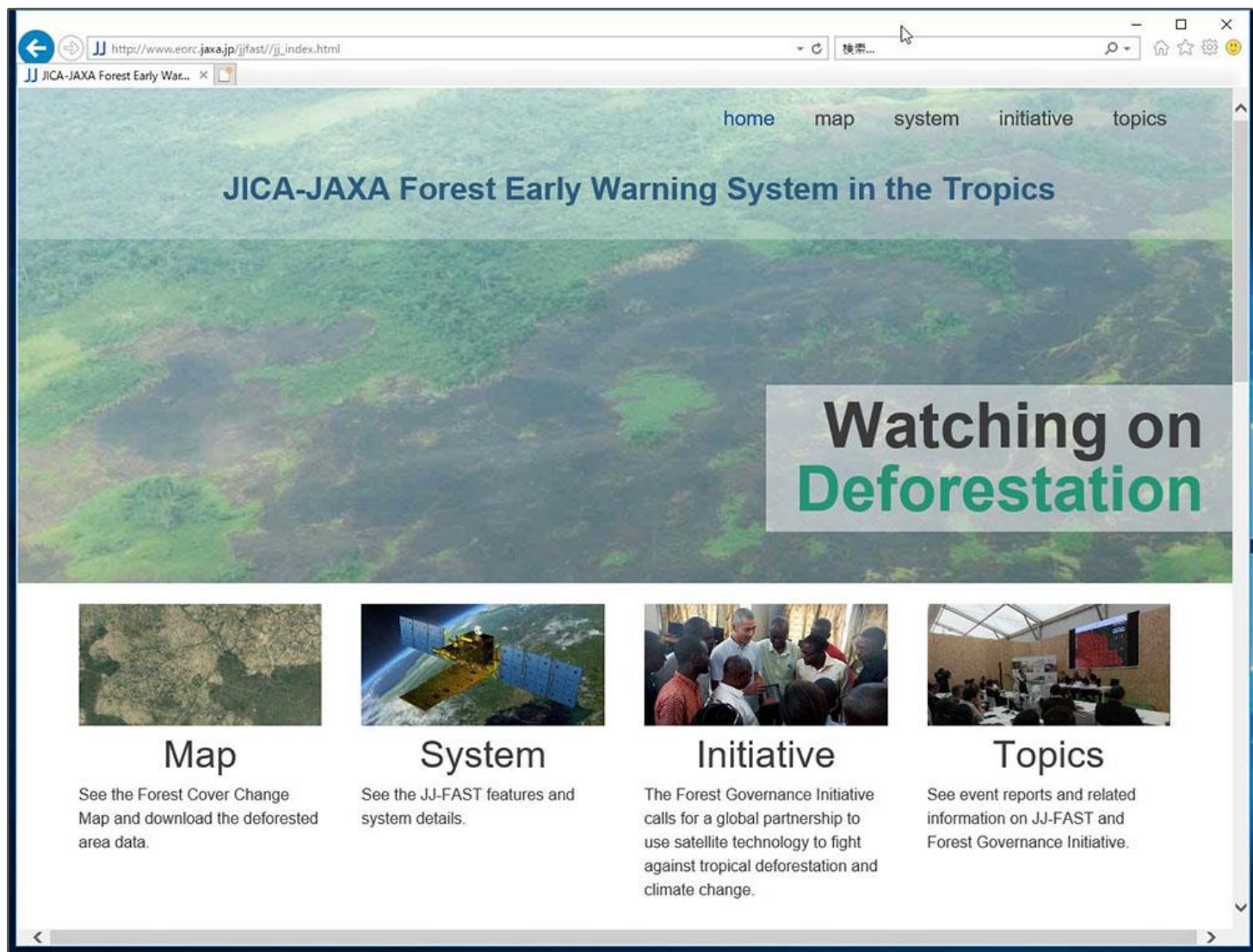
**Non-Forest: Dark**



**Dark change area represents deforestation!**

Multiple methods are adopted for the detection.

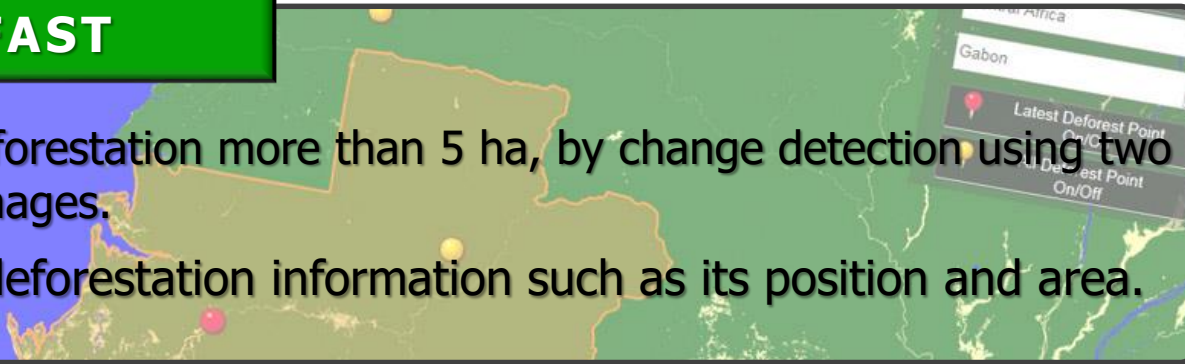




**Released in November 2016!**

## What is JJ-FAST

- It detects deforestation more than 5 ha, by change detection using two PALSAR-2 images.
- It provides deforestation information such as its position and area.



## Objective of JJ-FAST

- Early warning of deforestation including illegal activity (every 1.5 months).
- Suppression effect can be expected by periodic open information.



## Usage of JJ-FAST

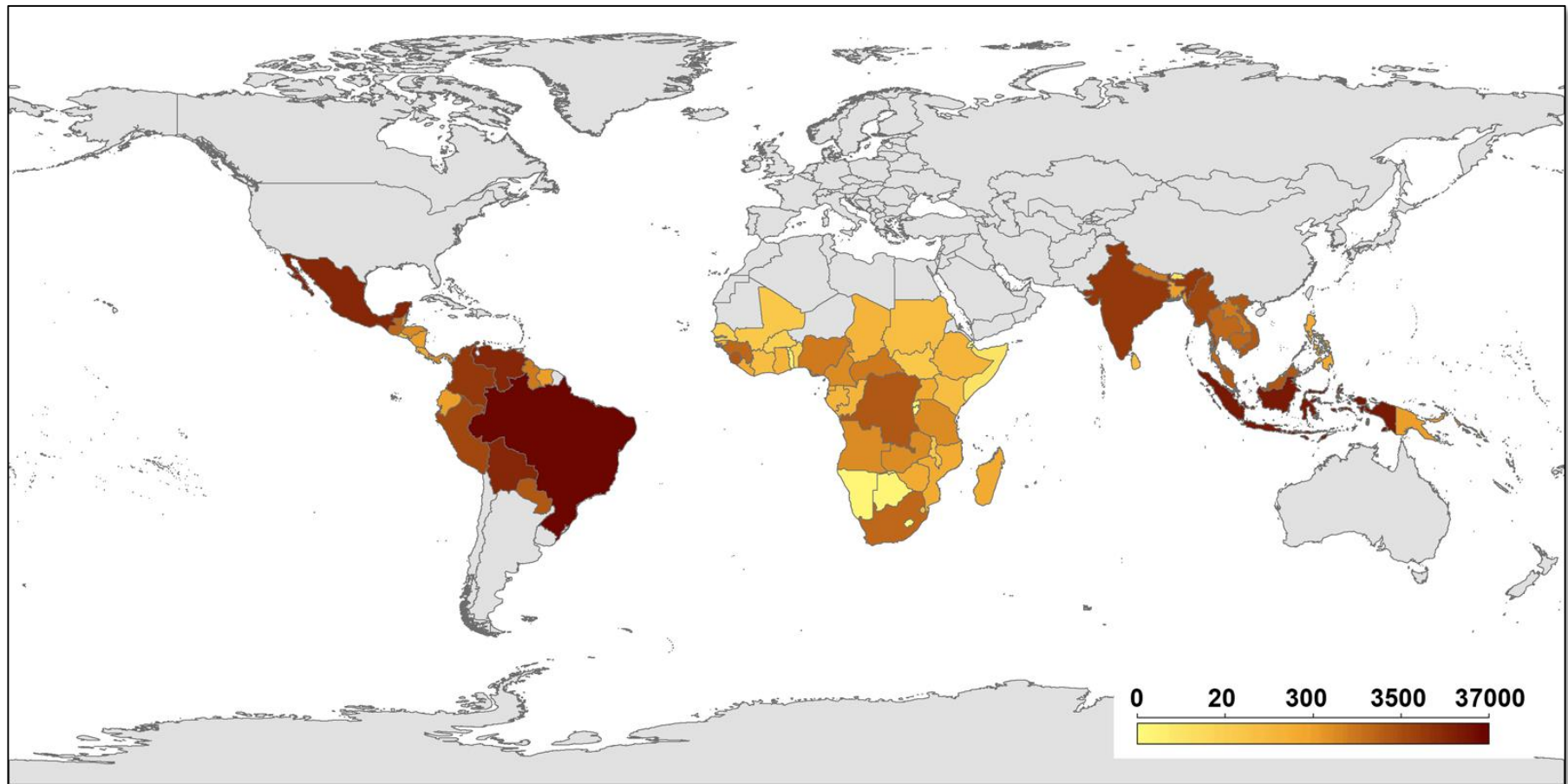
- User can download deforestation polygon.
- He can identify illegal activity by GIS analysis using land-use map or concession map.



<b>Data source</b>	<b>ALOS-2/PALSAR-2</b> (ScanSAR mode)
<b>Target area</b>	<b>77 countries</b>
<b>Update</b>	Every <b>1.5 months</b>
<b>Characteristics</b>	<ul style="list-style-type: none"><li>- <b>Global coverage</b>: almost all tropical forests.</li><li>- <b>Cloud-cover area observation</b>: even in rain season.</li><li>- <b>Fast web-page</b>: forester can use it in the field.</li></ul>



# 8. Results of deforestation detection



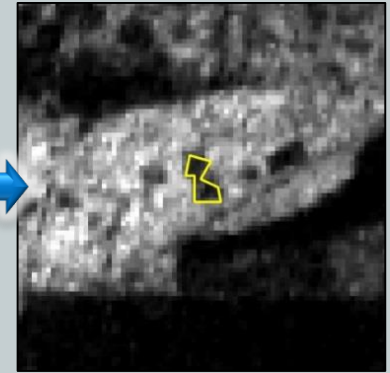
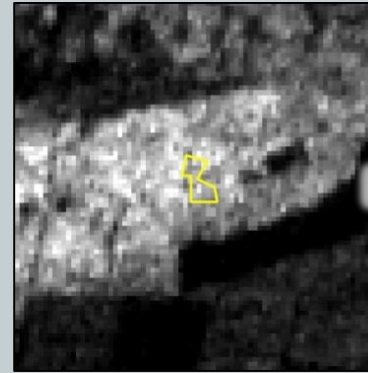
**Number of deforestations until Aug. 2019.**

Total: 146,132  
Cameroon: 576

# 9. Examples of deforestation

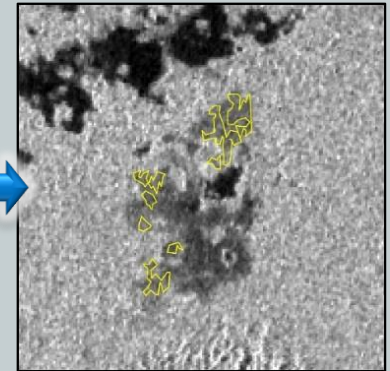
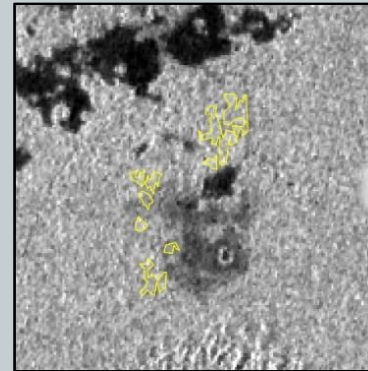
## Botswana

Agricultural land development.



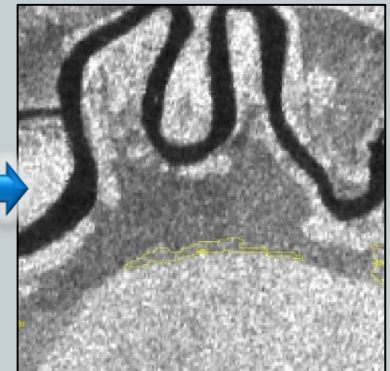
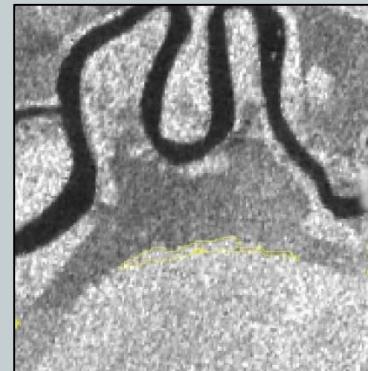
## Gabon

Oil-palm plantation development.



## Indonesia

Oil-palm plantation development.



**Government's Forest Division**  
responsible for monitoring illegal logging

## Office



Warning of JJ-FAST



Directive of survey



## Field



Air survey



In-situ survey

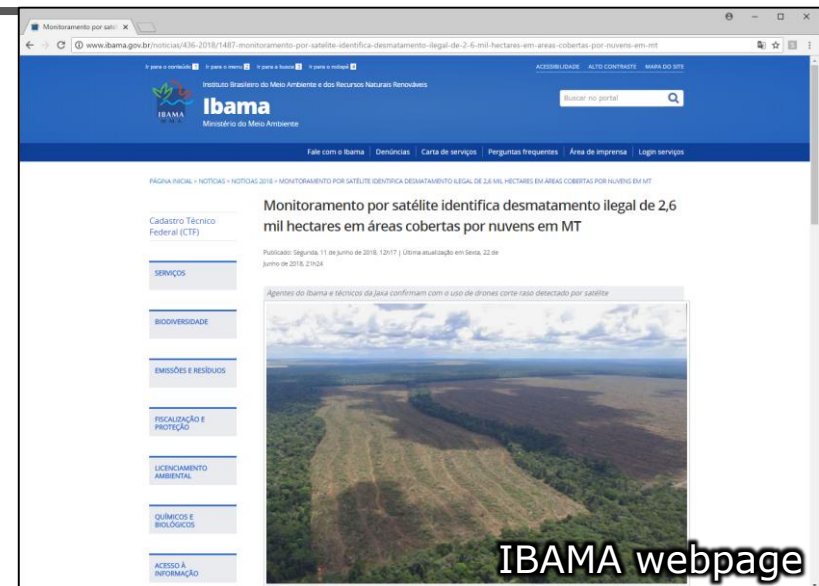


## Peruvian government

SERFOR operates a deforestation monitoring system GeoBosques which mainly uses Landsat data, and they also use JJ-FAST data.

## Brazilian government

IBAMA uses JJ-FAST for illegal logging monitoring. They captured 2,600 ha of illegal logging and imposed a surcharge of 13,700,000 real (3.4 million dollar) in February 2018.



## Deforestation monitoring system **JJ-FAST** ...

- provides up-to-date information for global tropical forests.
- is not influenced by cloud cover, even in rain season.
- strongly supports your forest management!



JICA-JAXA Forest Early Warning System in the Tropics

