

hsr 2022
SEVENTH GLOBAL SYMPOSIUM ON HEALTH SYSTEMS RESEARCH
SÉPTIMO SIMPOSIO MUNDIAL SOBRE INVESTIGACIÓN EN SISTEMAS DE SALUD

Strengthening implementation of home-based records for Primary Health Care

2-NOV 2022 11:00-12:30 Agora conference Center Room L, Bogota & Hybrid

**MATERNAL AND CHILD HEALTH
RECORD BOOK**



OVERVIEW OF THE GHANA COMBINED MCH RECORD BOOK

GHANA HEALTH SERVICE

**PRESENTATION BY DR KOFI ISSAH
DIRECTOR FAMILY HEALTH DIVISION**



Contents

1. History and Evolution
2. Planning and Development
3. Progress of Implementation
4. Challenges
5. Actions taken to address challenges
6. Next Steps

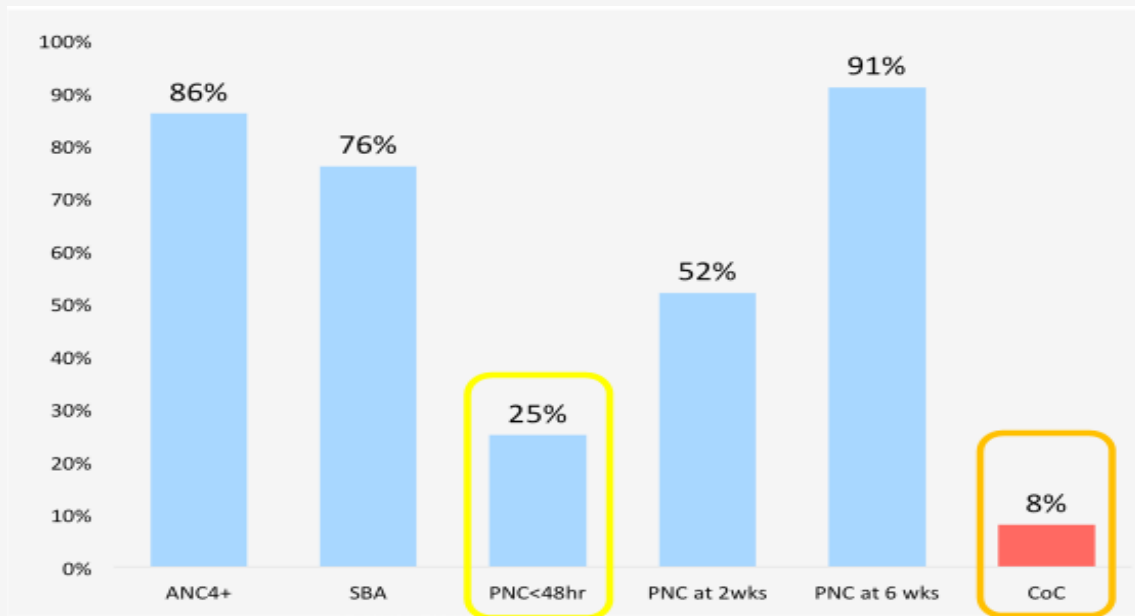
Evolution of combined book and rationale for integration

- In the last few decades, Ghana has a "Maternal Health Records" for pregnant women and mothers, and a "Child Health Records" for children.
- The separate books did not provide the essential linkage for the continuum of care from pregnancy to age five.
- To fill the gaps in of maternal and child health services with better coverage a new combined book with technical and financial support from Japan International Cooperation Agency (JICA).
- Findings/Evidence from Ghana Embrace Implementation Research
- High cost of printing two separate books
- Low continuum of care coverage despite the high antenatal care coverage

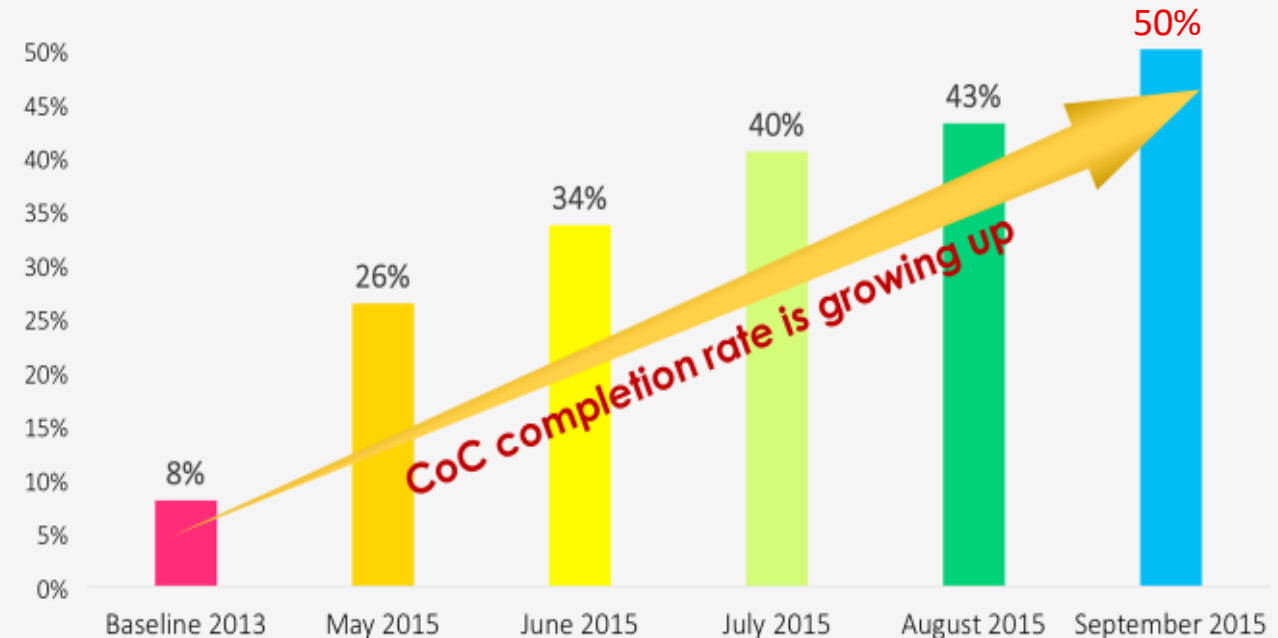
EMBRACE PROJECT: CoC Completion Rate Before & After the Intervention



Poor Continuum of Care completion rate



Achievements: CoC completion rate identified in monitoring



Key features of the MCHRB



- A) FAMILY IDENTIFICATION
- B) PREGNANCY RECORDS
- C) HEALTH MESSAGES DURING PREGNANCY
- D) HEALTH MESSAGE FOR DELIVERY
- E) DELIVERY RECORDS
- F) POSTNATAL RECORDS FOR MOTHER
- G) CHILD IDENTIFICATION
- H) POSTNATAL RECORDS FOR CHILD
- I) HEALTH MESSAGES FOR MOTHER AFTER DELIVERY
- J) HEALTH MESSAGES ON FAMILY PLANNING
- K) HEALTH MESSAGES FOR NEWBORN BABY (LESS THAN 1 MONTH)
- L) HEALTH MESSAGES FOR CHILD (AGE 1 MONTH UP TO 5 YEARS)
- M) RECORDS ON CHILD GROWTH AND DEVELOPMENT
- N) LOOK OUT FOR THESE SIGNS
- O) STAGES OF GROWTH (DEVELOPMENTAL MILESTONES)
- P) SWEET MEMORIES
- Q) COC CARD



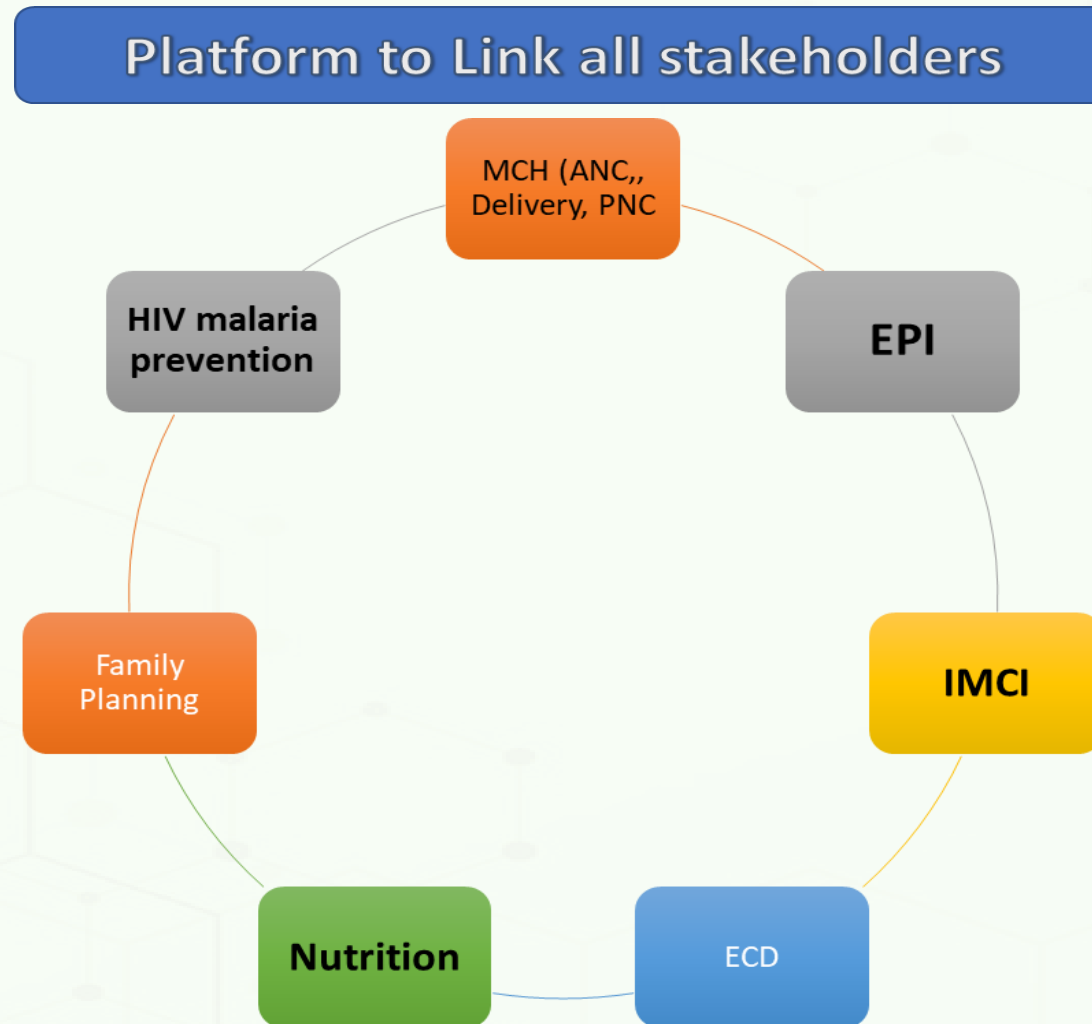
During Pregnancy

During Delivery

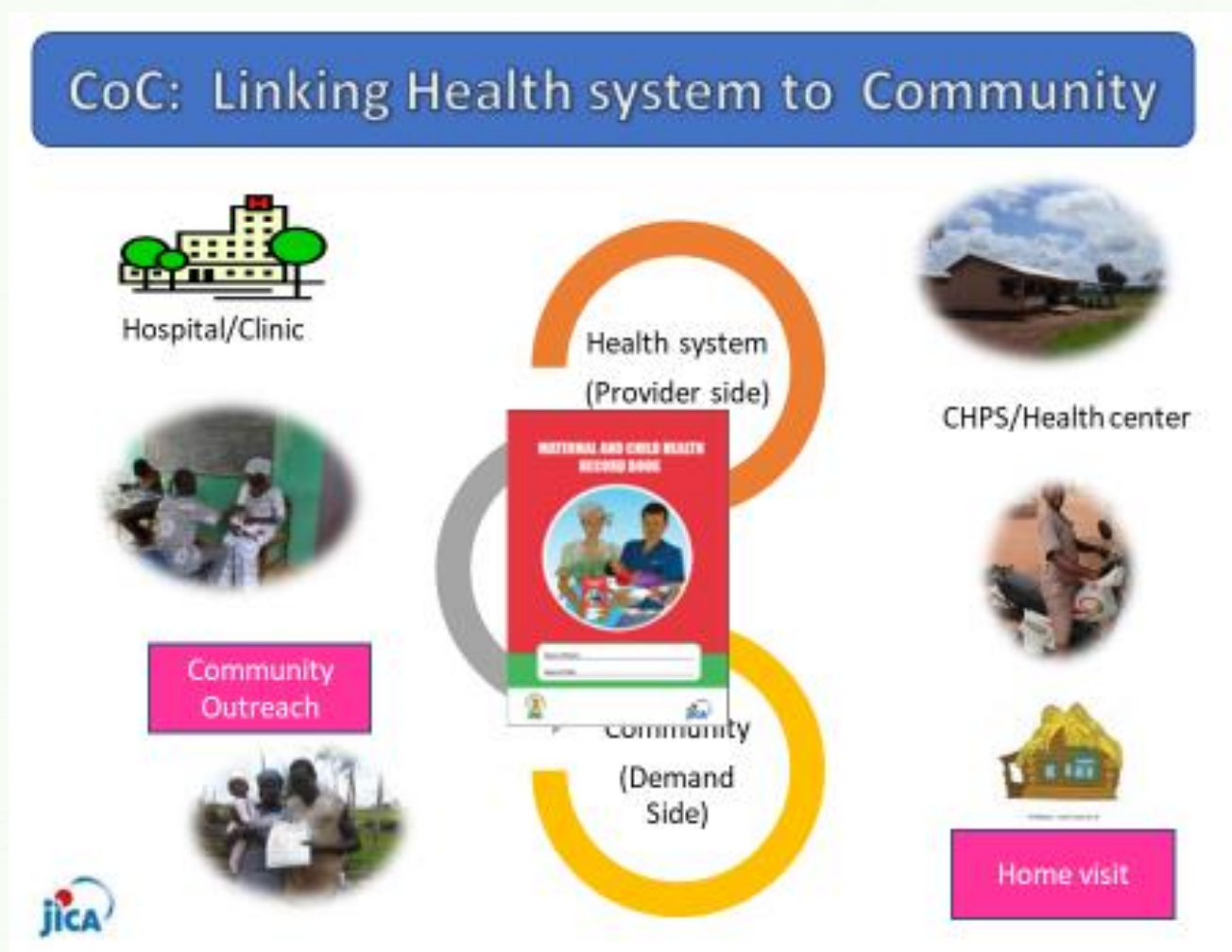
Postnatal period

Childhood (up to 5 years)

Role of the MCH RB in Primary Health Care



Role of the MCH RB in Primary Health Care



Implementation/Operational Challenges



- High expectation/demand and time lag for printing and distribution
- Lack of funding for continued capacity building activities-training, mentoring and supportive supervision.
- Quality Assurance: Challenges with the adherence to the standard and integrity of printing esp. with the private sector
- Mal-distribution at the sub national level due to poor accountability systems and proper forecasting

CHALLENGES CON'T

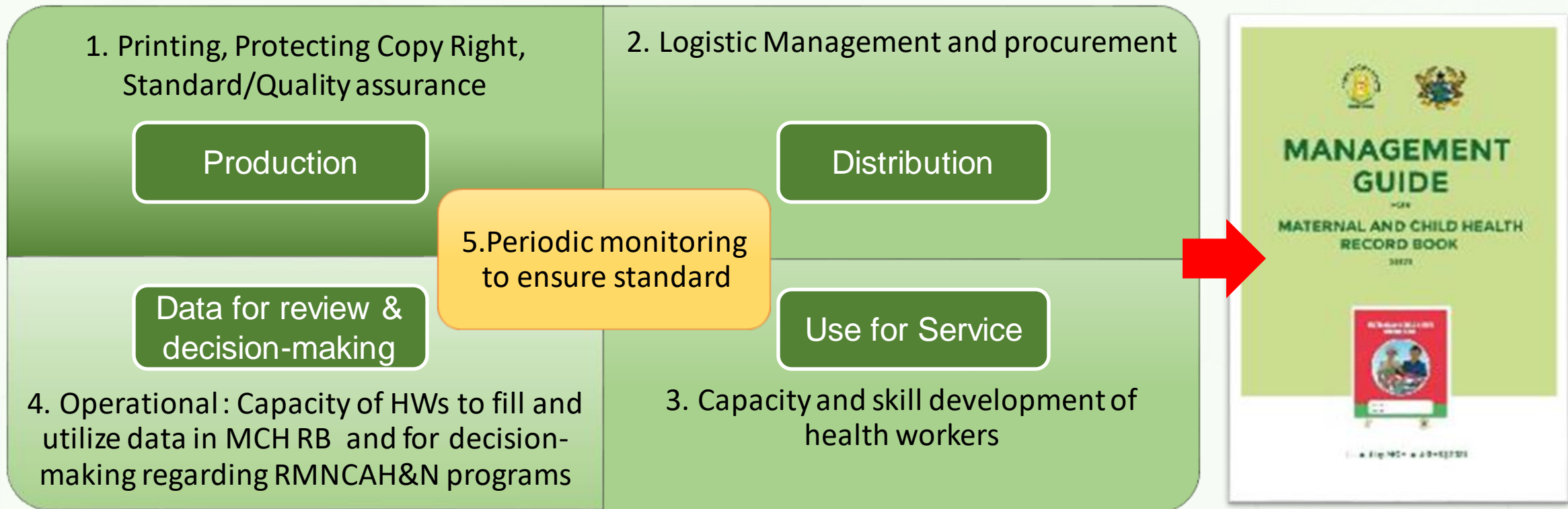


- Implementation of new services introduced for quality RMNCAH&N services due to lack of the requisite logistics eg: Anthropometric equipment for nutrition assessment
- Incomplete filling of the books

ACTIONS TAKEN TO ADDRESS CHALLENGES AND ENSURE SUSTAINABILITY

1. Development of Management Guide

Provides reference and guidance for decision making related to the use and rollout of the MCH RB for all managers at all levels of service delivery



ACTIONS TAKEN CON'T



2. Advocacy for continued and timely reproduction using approved processes by key stakeholders

- **4,465,000** MCH RB have been printed by GOG, private sector and partners.

| | JICA | DFID | GOG/WB | UNICEF | GOG/NHIA | Regions /Districts | PPP-Ghana Gas | USAID |
|------|-----------|---------|---------|---------|-----------|--------------------|---------------|---------|
| 2017 | 116,000 | | | | | | | |
| 2018 | 332,000 | 130,000 | 593,000 | | | | | |
| 2019 | 330,000 | | | | | | 10,000 | |
| 2020 | 1,004,500 | | | | | 500 | | |
| 2021 | 150,000 | | | 160,000 | 500,000 | | | |
| 2022 | | | | | 1,000,000 | | | 139,000 |
| | 1,932,500 | 130,000 | 593,000 | | 1,500,000 | | 10,000 | |

Actions taken: Institutionalization and Sustainability

3. Capacity Strengthening 1: Standardized Training Developed

A package of training developed and certified as a national standard

1. Operational Guidelines for NC & RC
2. User Guide of MCH RB
3. Trainer's Guide
4. Participant's Guide
5. 4-day training curriculum
6. Job-Aid Flipchart



Actions Taken: Institutionalization and Sustainability



Capacity Strengthening 2: Audio Visual learning materials developed for self paced learning

For Health Workers Self-Learning

1. “Dear Mother”: Respectful way for introduction of MCH Record Book to mother (for health worker)
2. What is Continuum of Care (CoC) and How to use CoC card
3. Developmental Milestone
4. Height/Length and weight measurements and plotting,
5. BMI calculation and desired weight at Expected Date of Delivery (EDD)
6. Counseling skills and steps including demonstration on both pregnant women and caregiver

For pregnant women/mother

1. “Dear Mother”: Respectful way for introduction of MCH Record Book to mother
2. Danger signs



Capacity Strengthening 3: Monitoring & Supervision

Different Types of monitoring approaches used:

- Program specific monitoring and supportive supervision
- Integrated Supportive Supervision
- On the job mentoring and coaching/Peer to peer mentoring and coaching

Monitoring conducted at different levels

- National –Biannually
- Regional-Quarterly
- District-Monthly
- Sub district –Biweekly

- **M&S checklists developed for the various administrative levels**
 - Regional level
 - District level
 - Facility level
- **Team Composition (Mixed cadres are deployed)**
 - Nutrition
 - RCH/PH
 - Health Promotion
 - Disease Control Officers
 - Reps from partner organizations

Monitoring and Supervision (M&S) tools



- Monitoring sheet: for facility, for district and for region.
- Summary sheets is used for data collection after the monitoring.
- Ashanti

| Basic Information | | | | | | | | | | | | | | |
|-------------------|--------------------|---------------------|------------------|----------------|---------------------|---------------------|---------------------------|--------------------------|--------------------------|----------------------|--------------|-----------------|--------------|-------|
| | Date of monitoring | Name of Facility | Name of District | Name of Region | Bed capacity for HF | Bed capacity for MU | ANC registrants per month | ANC attendance per month | CWC attendance per month | Deliveries per month | Number of UG | Number of Stamp | Number of SP | Elect |
| 1 | 16-Oct-18 | Kaneshie Policlinic | Okaekue | Greater Accra | 40 | 12 | 392 | 1243 | 1648 | 146 | 1 | 11 | 11 | |
| 2 | 16-Oct-18 | Achimota Hospital | Okaekue | Greater Accra | 88 | 12 | 348 | 1521 | 128 | 223 | 1 | 2 | 2 | |
| 3 | | | | | | | | | | | | | | |
| 4 | | | | | | | | | | | | | | |
| 5 | | | | | | | | | | | | | | |
| 6 | | | | | | | | | | | | | | |
| 7 | | | | | | | | | | | | | | |
| 8 | | | | | | | | | | | | | | |
| 9 | | | | | | | | | | | | | | |
| 10 | | | | | | | | | | | | | | |
| 11 | | | | | | | | | | | | | | |
| 12 | | | | | | | | | | | | | | |
| 13 | | | | | | | | | | | | | | |
| 14 | | | | | | | | | | | | | | |

Monitoring and Supervision Checklist for MCH RB implementation Facility level

A. Basic information

| | |
|--|------------------------------------|
| Date: | Name of Region: |
| Name of District: | Name of Facility: |
| Bed capacity for health facility: | Bed capacity for maternity unit: |
| ANC registrants for past month: () | ANC attendance for past month: () |
| CWC attendance for past month: () | Deliveries for past month: () |
| When did your facility start using MCH RB? | |
| Monitoring team: full name/designation | |

Staff trained

| | Total number | Number who received formal training | Number trained on the job | Number who received brief orientation |
|-------------------|--------------|-------------------------------------|---------------------------|---------------------------------------|
| PHN | | | | |
| Nutrition officer | | | | |
| Enrolled Nurse | | | | |
| Midwife | | | | |
| CHN/CHO | | | | |
| Other 1 () | | | | |
| Other 2 () | | | | |
| Other 3 () | | | | |

► Did the formal training include practical sessions? (Yes / No)

Remarks on details of training (method, content, duration etc.)

Ask about challenges and way forward for future training

Supportive supervision



- **The findings include.**

- **Data Management:** There are still challenges with filling the ANC parts. The Nutrition counselling tables are rarely filled.
- **Skills and competencies:** Counselling skills had generally improved, and anthropometric measurements were well done. On the job coaching was carried out
- **Logistics and equipment management:** stock management of the MCHRB had improved. Out of the 387 facilities visited nation wide only 202 (in Ahanti region and as part of the MCHRB project) had adequate equipment and logistics.
- **Supervisory Teams:** Multi-disciplinary teams to ensure that all components of the MCHRB are covered.

STRENGTHS (Management)



- **The MCH RB has been largely successful in Ghana.**
 - **Contributing factors include:**
 - Stakeholder consultation and consensus is critical for ownership and partner commitment
 - Leadership and long term commitment by GOG, at management and implementation levels.
 - Extensive capacity building-Training, mentoring and supervision, provision of equipment
 - However there is need to advocate for more funding and support to sustain the gains made.

NEXT STEPS



- Distribution of MCH RB to be integrated into the existing Ghana Integrated logistics management information systems(GhILMIS) for proper accountability and management
- Integration of key accepts of the standardized training materials into the pre-service curriculum for the different cadres of health staff
- Continuous engagement of key stakeholders including the NHIA and private sector for timely reproduction and distribution of the books
- Digitalization of the MCH RB-Pilot initiated in the Ashanti through a PPP with the Ajinomoto Foundation and NEC, Japan.
- The MCHRB is to be a critical document for the Early care nurturing programs, national records like the National Identification Card



THANK YOU