

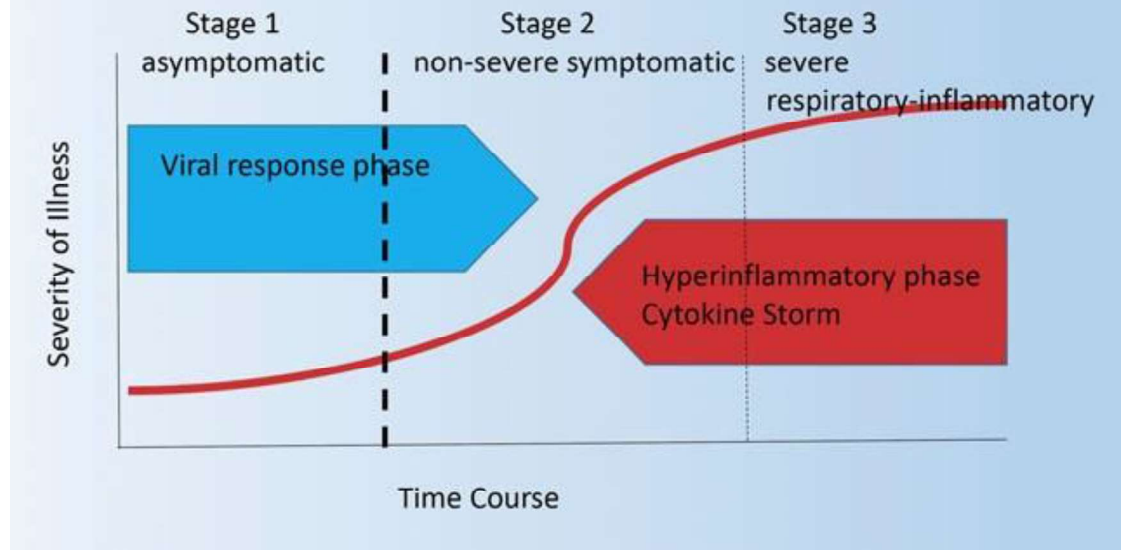
Reproducing all or any part of the contents is prohibited.

**Introduction to the Webinar "Detecting Predictive
Biomarkers for Severe COVID-19"**

Predictive Factors for COVID-19 Severity

**Mitsuo ISONO
visiting fellow
at JICA Ogata Research Institute**

Course of COVID-19 Infection



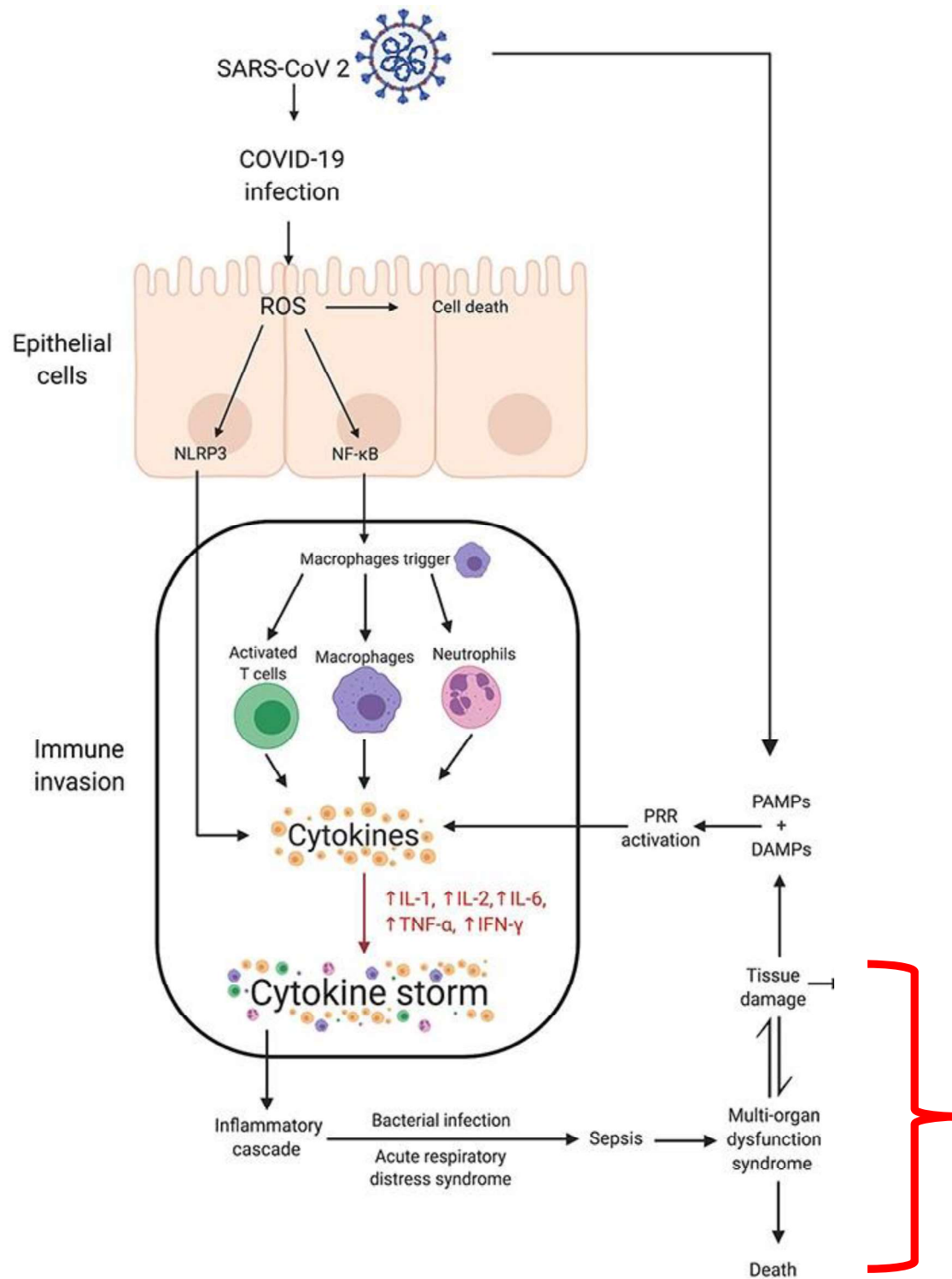
Generally, it is said that:

- Around 20~30 % of infected cases need to be hospitalized.
- About 20% of hospitalized cases require intensive cares.

Among asymptomatic cases/ cases with mild symptoms, there are:

- Sudden death cases
- Rapidly deteriorating case

So, it is very critical to detect these cases with sever conditions in the very early stages.



Possible risk factors/markers related to severity/mortality due to COVID-19

➤ Demographic factors/ clinical conditions

- Sex: Male
- Aging: More than 70 years old
- Co-morbidity with Heart disease, DM, Dyslipidemia, COPD etc.

➤ General laboratory markers (examples)

- Factors related to inflammation

Leucocytes/Lymphocytes
CRP (C Reactive protein)
Procalcitonin etc.

- Factors related to coagulopathy

Platelet
D-dimer etc.

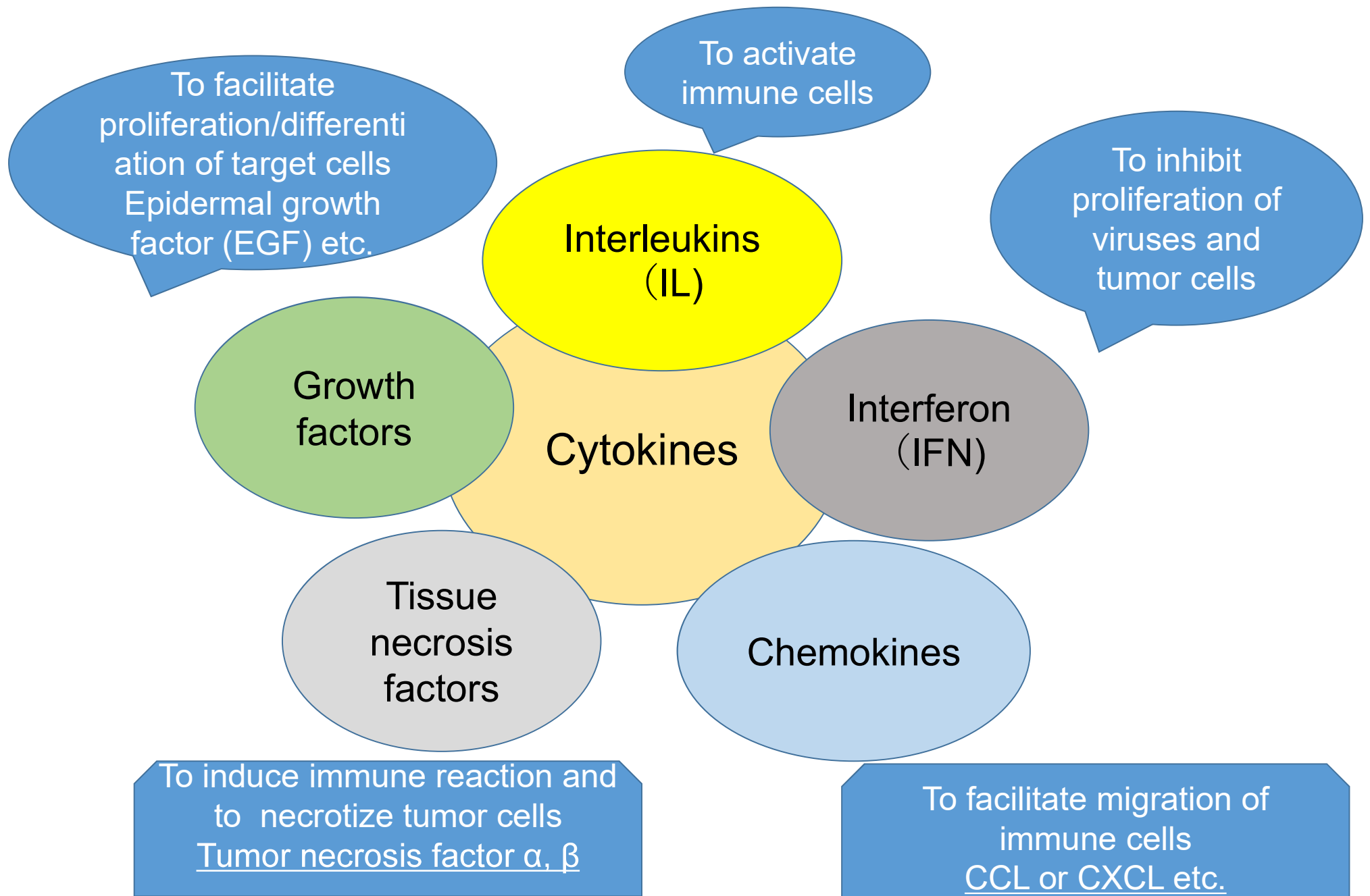
- Factors related to tissue damage

Lactate dehydrogenase (LDH)
Troponin
eGFR (estimated glomerular filtration rate) etc.

❑ Kermali M *et al.* The role of biomarkers in diagnosis of COVID-19 - A systematic review. *Life Sci* 2020;254:117788.

❑ Hodges G *et al.*: <https://bmjopen.bmj.com/content/10/12/e041295>

Classification of cytokines (example)



Possible predictive biomarkers related to inflammatory system

- Interleukin (IL); -1 β , -2, -6, -7, -10
- Interferon (IFN); IFN γ -induced protein 10 (IP10)
- Chemokine;
 - Monocyte chemoattractant protein-1 (MCP1) (CCL2)
 - Macrophage inflammatory protein 1-alpha (MIP1A), (α : CCL3, β : CCL4)
- Growth factor;
 - Granulocyte colony stimulatingfactor (GCSF)
- Tumor necrosis factor –alpha (TNF- α)
- Others;
 - Intercellular adhesion molecule 1 (ICAM 1)
 - Activaed leukocyte cell adhesion molecule (ALCAM) **etc.**

- ❑ Keddie S et al.:<https://www.sciencedirect.com/science/article/abs/pii/S1521661620307749?via%3Dihub>
- ❑ Rebillard ME et al; <https://www.jci.org/articles/view/145853>
- ❑ Fajgenbaum DC et al.: <https://www.nejm.org/doi/full/10.1056/NEJMra2026131>

Additional information

ACE2:

<https://www.atsjournals.org/doi/pdf/10.1164/rccm.202101-0142LE>

Viral load (CT value of PCR):

<https://www.medrxiv.org/content/10.1101/2021.01.04.21249236v1>