

Thai UHC and Health Systems for COVID-19 Responses

Walaiporn Patcharanarumol, PhD

1. Director of Global Health Division, Ministry of Public Health
2. Secretary General of IHPP Foundation

Reproducing all or any part of the contents is prohibited.



COVID-19 Situation, worldwide

Confirmed

266,590,123

409,393

Severe

86,974

177 (0.03%)

Recovered

240,145,988

436,730 (90.08%)

Deaths

5,276,254

4,651 (1.98%)

#	PLACES	CONFIRMED	NEW CASES	DEATHS	NEW DEATHS	New deaths : New cases
1	USA	50,068,685	57,947	809,558	329	0.57%
2	India	34,648,086	6,525	473,537	0	0.00%
3	Brazil	22,147,476	4,385	615,744	70	1.60%
4	UK	10,515,239	51,459	145,646	41	0.08%
5	Russia	9,833,749	32,136	282,462	1,184	3.68%
6	Turkey	8,921,150	20,033	78,017	187	0.93%
7	France	7,928,572	11,308	119,535	0	0.00%
8	Germany	6,219,169	39,330	103,913	309	0.79%
9	Iran	6,137,821	3,356	130,277	77	2.29%
10	Argentina	5,343,153	2,477	116,680	34	1.37%

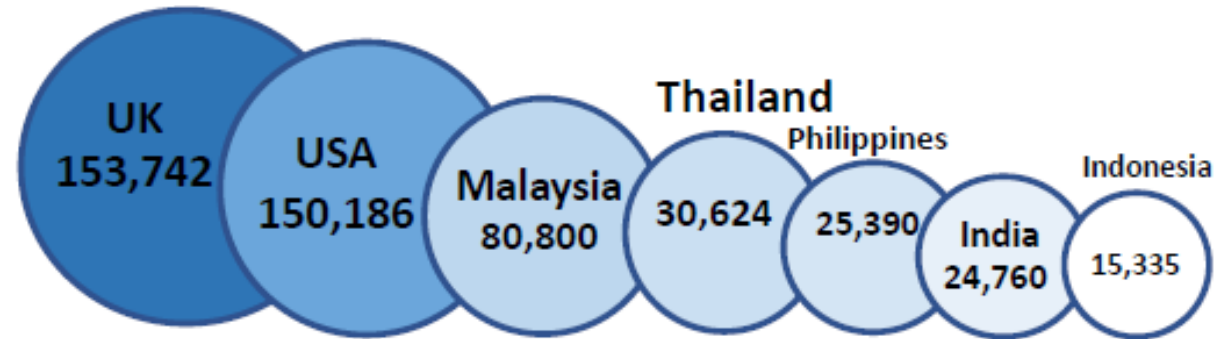
#	PLACES	CONFIRMED	NEW CASES	DEATHS	NEW DEATHS	New deaths : New cases
11	Spain	5,202,958	0	88,159	0	-
12	Italy	5,118,576	9,503	134,287	92	0.97%
13	Colombia	5,082,762	1,698	128,821	41	2.41%
14	Indonesia	4,257,815	130	143,876	9	6.92%
15	Mexico	3,901,263	970	295,202	48	4.95%
16	Poland	3,684,671	13,250	85,700	25	0.19%
17	Ukraine	3,501,955	4,478	88,519	239	5.34%
18	South Africa	3,038,075	6,381	89,975	9	0.14%
19	Philippines	2,835,154	543	49,499	113	20.81%
20	Netherlands	2,772,919	20,965	19,702	34	0.16%



COVID-19 Situation, ASIA

Decreasing trend of COVID-19 cases in Asia

Cases per 1 mln population



Death rate per 1 mln population



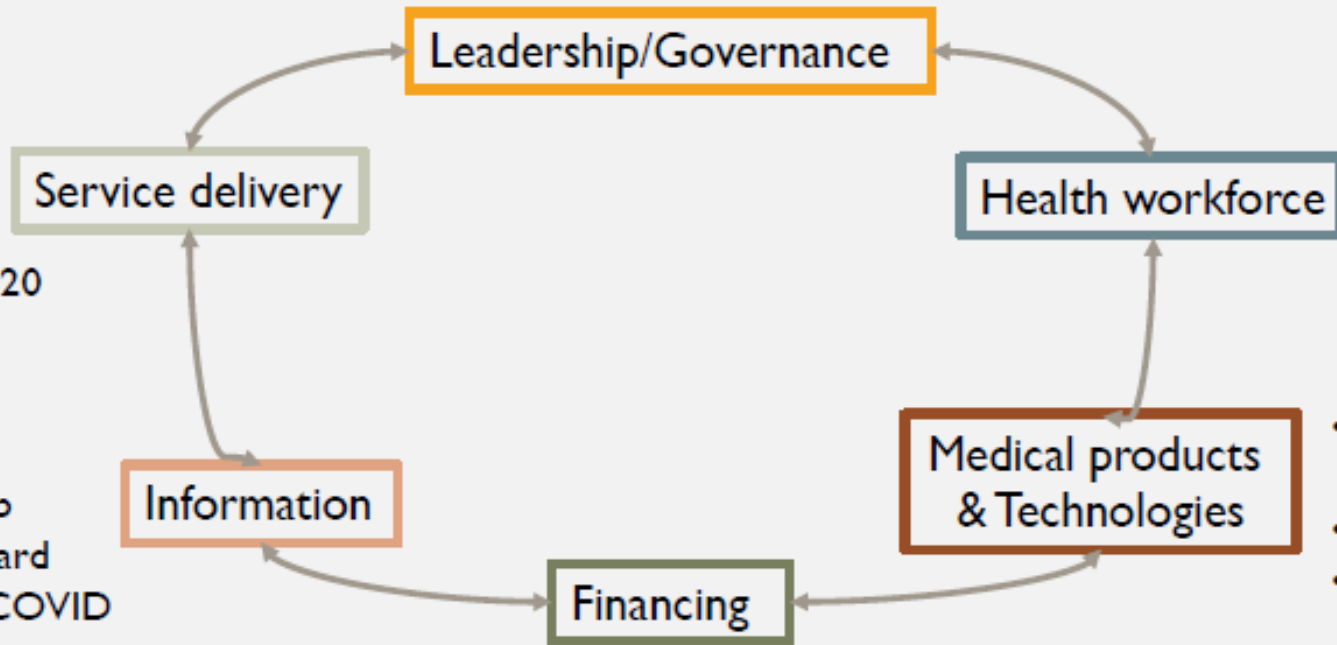
#	PLACES	CONFIRMED	NEW CASES	DEATHS	NEW DEATHS	New deaths : New cases
2	India	34,648,086	6,525	473,537	0	0.00%
14	Indonesia	4,257,815	130	143,876	9	6.92%
19	Philippines	2,835,154	543	49,499	113	20.81%
21	Malaysia	2,663,034	4,262	30,652	38	0.89%
24	Thailand	2,148,766	3,525	20,997	31	0.88%
30	Japan	1,727,942	114	18,364	0	0.00%
31	Bangladesh	1,577,720	277	28,005	4	1.44%
33	Vietnam	1,323,683	14,591	26,483	223	1.53%
34	Pakistan	1,287,161	336	28,777	10	2.98%
63	Myanmar	524,638	231	19,146	5	2.16%
67	S. Korea	477,358	4,324	3,893	41	0.95%
86	Singapore	269,873	662	763	4	0.60%
109	Cambodia	120,272	16	2,963	3	18.75%
113	China	99,203	61	4,636	0	0.00%
117	Laos	80,722	889	210	3	0.34%
167	Brunei	15,202	16	98	0	0.00%

HEALTH AS THE FIRST PRIORITY

- CCSA : Center for COVID-19 Situation Administration
- National Lockdown
- Closing border (even for Thais)

- Full coverage PHC + 1 million VHV
- 110 RT-PCR Labs by June and nationwide by Oct 2020
- Treat at Test facility

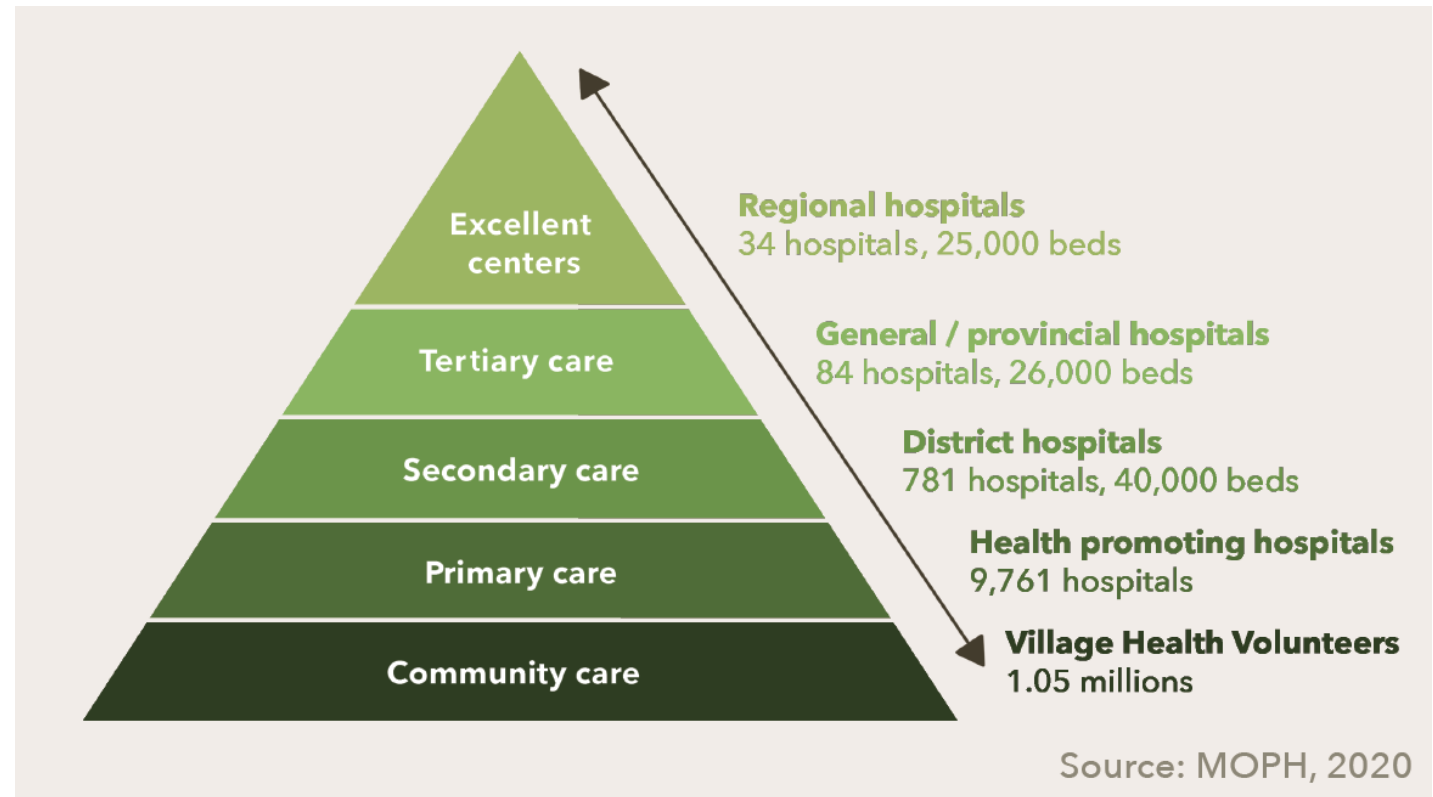
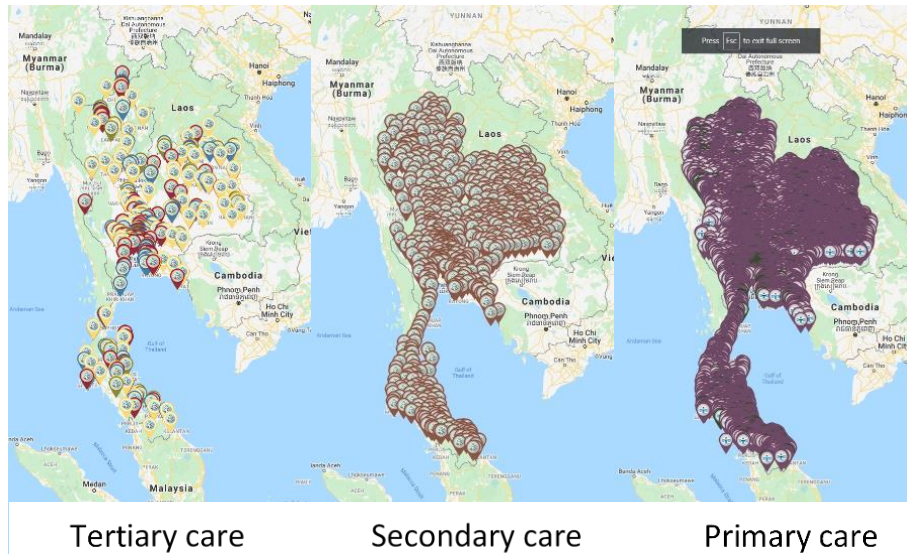
- CO-Lab
- CO-Ward
- DDC-COVID



- Physician 0.8/1000 Pop (WDI)
- Nurse 2.8/1,000 Pop (WDI)
- 1,000 SRRT
- 40 years of FETP: 0.5 Epidemiologist/200,000 Pop (MOPH)
- Central procurement & distribution by MOPH
- Export ban/Price control of Mask
- Reduce process/Tax

- Free for all (Test/Treat/Isolate/Quarantine)
- Public + Private (Universal Coverage for Emergency Patient)
- Reimbursement system through National Health Security Office (NHSO)
- 45-Billion-baht special budget for COVID-19 response

Thailand Health Systems and UHC



- 100% Thai population coverage
- 100% geographical coverage of health facilities under Ministry of Public Health
- 1 million village health volunteers
- Field of Epidemiology Training Program
- Surveillance and Rapid Response Team (SRRT) at district level

Thailand UHC: mobilization of health financing
for COVID-19 emergency response



"All expenses of essential health services and interventions related to COVID-19 are fully covered by Thai UHC — to protect everyone on the Thai soil from financial hardships, and to leave no one behind."



Health Insurance Scheme

**Free COVID-19
Screening, Testing,
Quarantine,
treatment, Medical
supplies,
Home & Community
Isolation**



กรมควบคุมโรค
Department of Disease Control

**Special Government
budget managed by
MoPH**

COVID-19 Funding sources



Cabinet



NHSB

- ❖ Regulate COVID-19 Health services policy
- ❖ UCS Fund + Gov. loan decree
- ❖ PP/OP/IP/UCEP COVID-19 regulation



Additional Budget

COVID-19



*Annual Budget

Community Health Fund (Matching Fund)

*Proposing plan to request Annual Budget usually need to be done 2 years in advance.



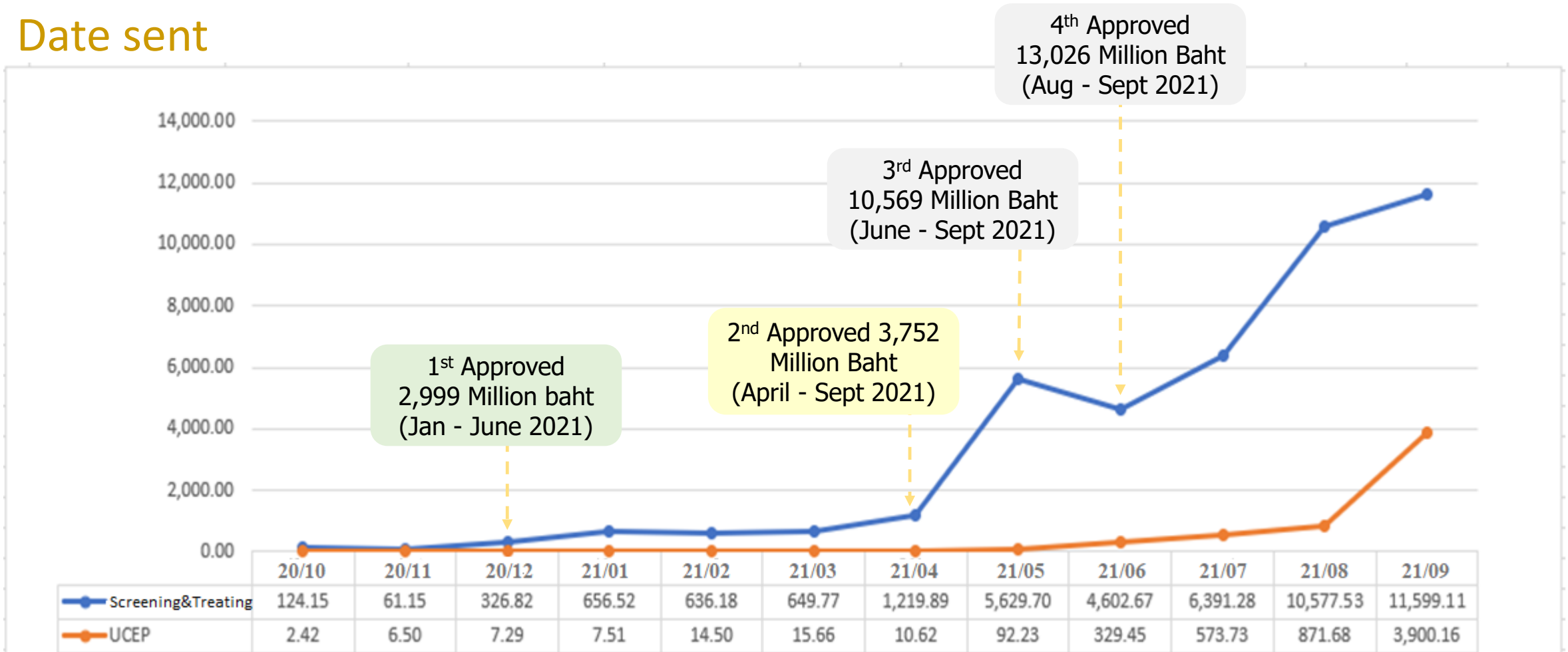
- ✓ Prevention and Promotion program
- ✓ Screening and testing/ Tracking/ Tracing
- ✓ Health related services
- ✓ Home / Community Isolation Program
- ✓ Compensation for people who suffer from vaccination adverse event

- ✓ Public health awareness
- ✓ Prevention and Promotion at community level



Monthly Report on COVID Expenditures and Tranches of Additional Budget Approval, FY 2021 (total 30,348 mln Bhat)

Date sent



*The NHSO will request for more additional budget in FY 2022 due to an overspent in previous fiscal year

COVID-19 Health Related Services

1

General Pop.



Free COVID-19 vaccination

Health Facilities
Provincial Public Health Office
NHSO Regional Offices will provide COVID-19 vaccine to Thai citizens

2

At Risk of exposure or PUI



Free COVID-19 screening and testing (RT-PCR/ATK)

"Not Detected"
Isolation/Quarantine for 14-day
At home or health facilities

After 14-day Isolation/quarantine
Re-test for "Free"

"Detectable"
refer to Public or Private Hospital, Hopitel, or Field Hospital

3

COVID-19 Patients



COVID-19 patients will receive free treatment in both public and Private health facilities

The government will pay for medical cost.
Public hosp. payment system based on DRGs + Medical and protective equipment cost + Medication cost + Lab test and specimen collection cost
Private hospital can reimburse every items (16 categories)

4

Suffer from COVID-19 Vaccine



Preliminary financial compensation

Those who suffer from adverse Reaction of COVID-19 vaccination will apply the defendant to Regional Sub-committee to consider for the Financial Compensation. It will be paid within 5 working days.

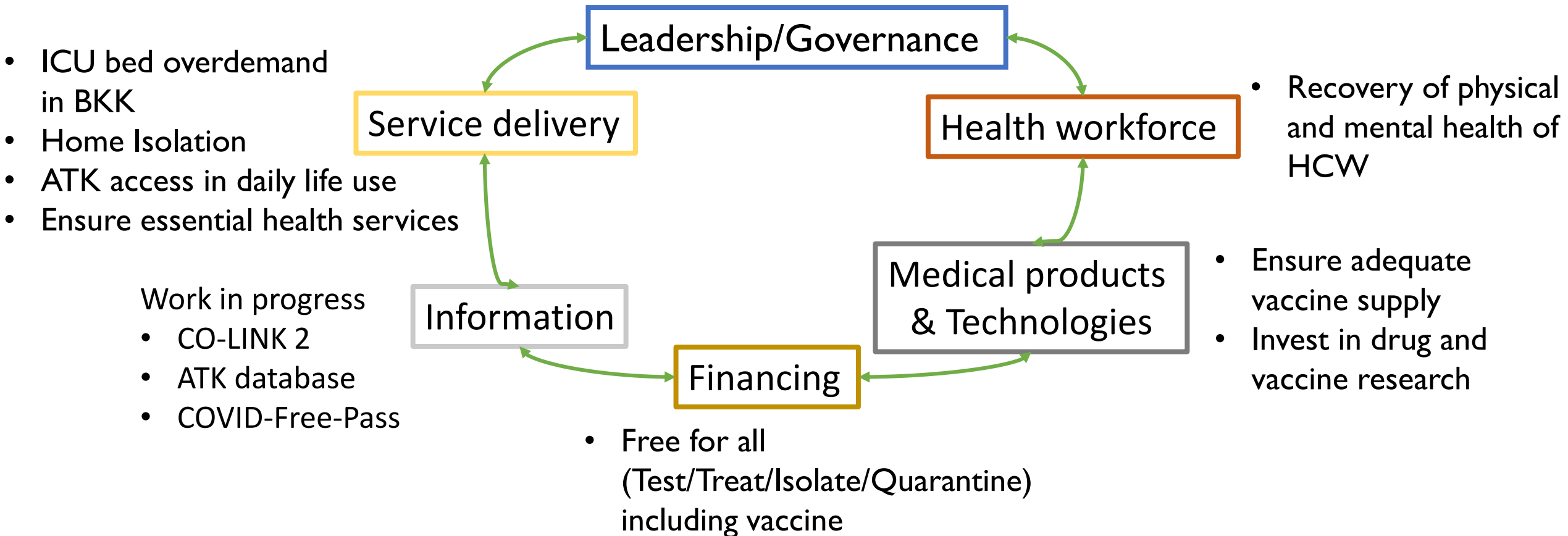
Lessons learnt

- Whole-of-Government & Whole-of-Society approach
- Coordination and management
- New normal: routine life, working style and health services
- Digital disruption/Digital health/Telemed or Telemedicine
- Health promotion and disease prevention: distancing, mask, hygiene



The Way forward

- Living with COVID-19
- No clear criteria for re-imposing social measures yet





FOLLOW US



www.ihppthaigov.net



ihpp.thailand



ihpp_thailand@ihpp.thaigov.net



[IhppThailand](https://twitter.com/IhppThailand)



[ihppchannel](https://www.youtube.com/channel/ihppchannel)