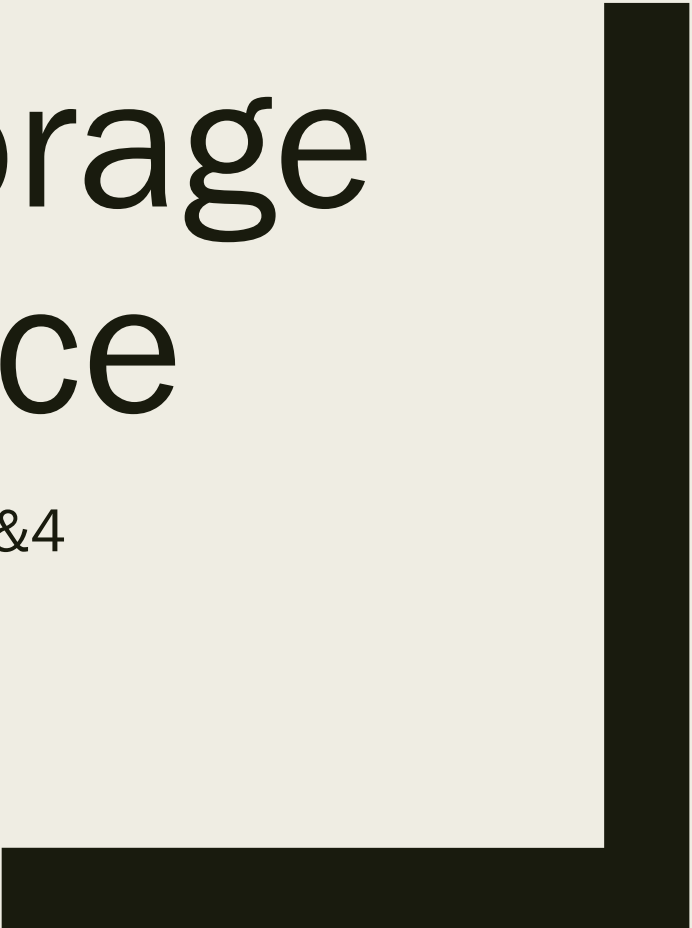




Appropriate Storage Method of Rice

JICA Domestic Rice Project Output3&4

January/2023



1. Visual inspection for the milled rice and paddy



The mold infestation



Source: happyrecipe.net (Left photo)
www.city.yokohama.lg.jp (Right photo)

2. The warehouse floor and equipment should clean regularly for high work efficiency and preventing the contamination from mold .



NLC Tibar Warehouse



Regularly inspect all moving parts and clean

3. The storage bags should be placed on a wooden or a plastic pallet.



NLC Maliana Warehouse before rehabilitation

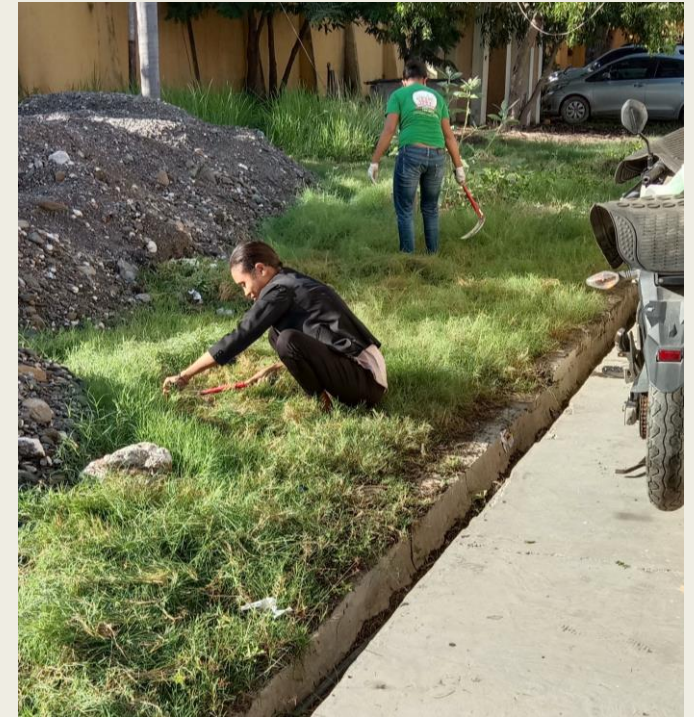
4. Prevent a dust accumulation and an invasion of small animals and clean and maintain the surrounding area of warehouse



NLC Maliana Warehouse



Bird prevention in Maliana Warehouse

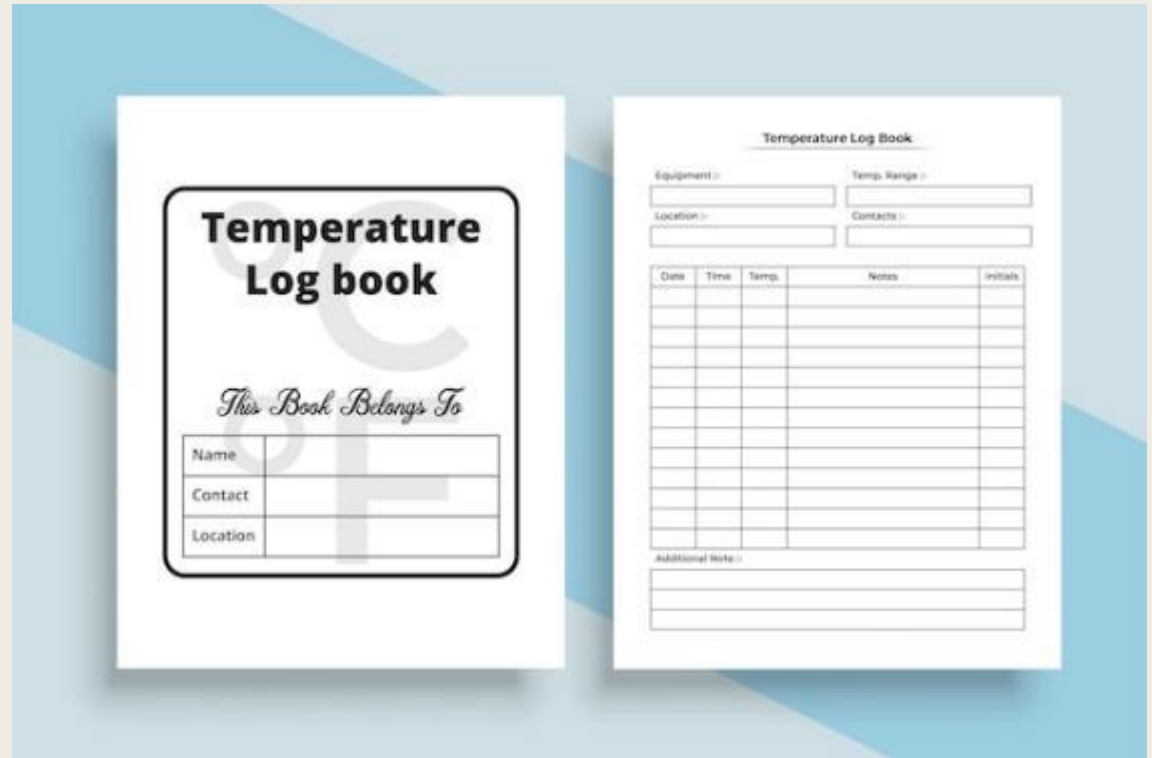


The surrounding area of Bebora Warehouse

5. The room temperature, relative humidity, temperature of the paddy must be regularly inspected and recorded on the logbook.



Measuring the temperature inside the rice bag



Record keeping

Eliminate the mold!