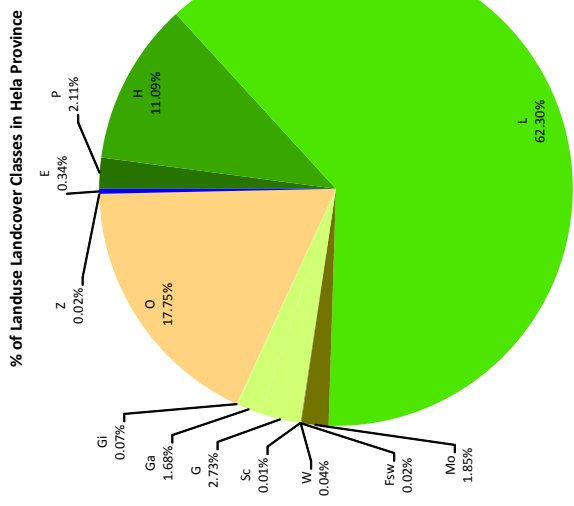
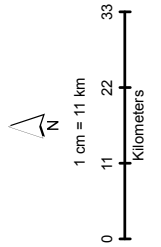
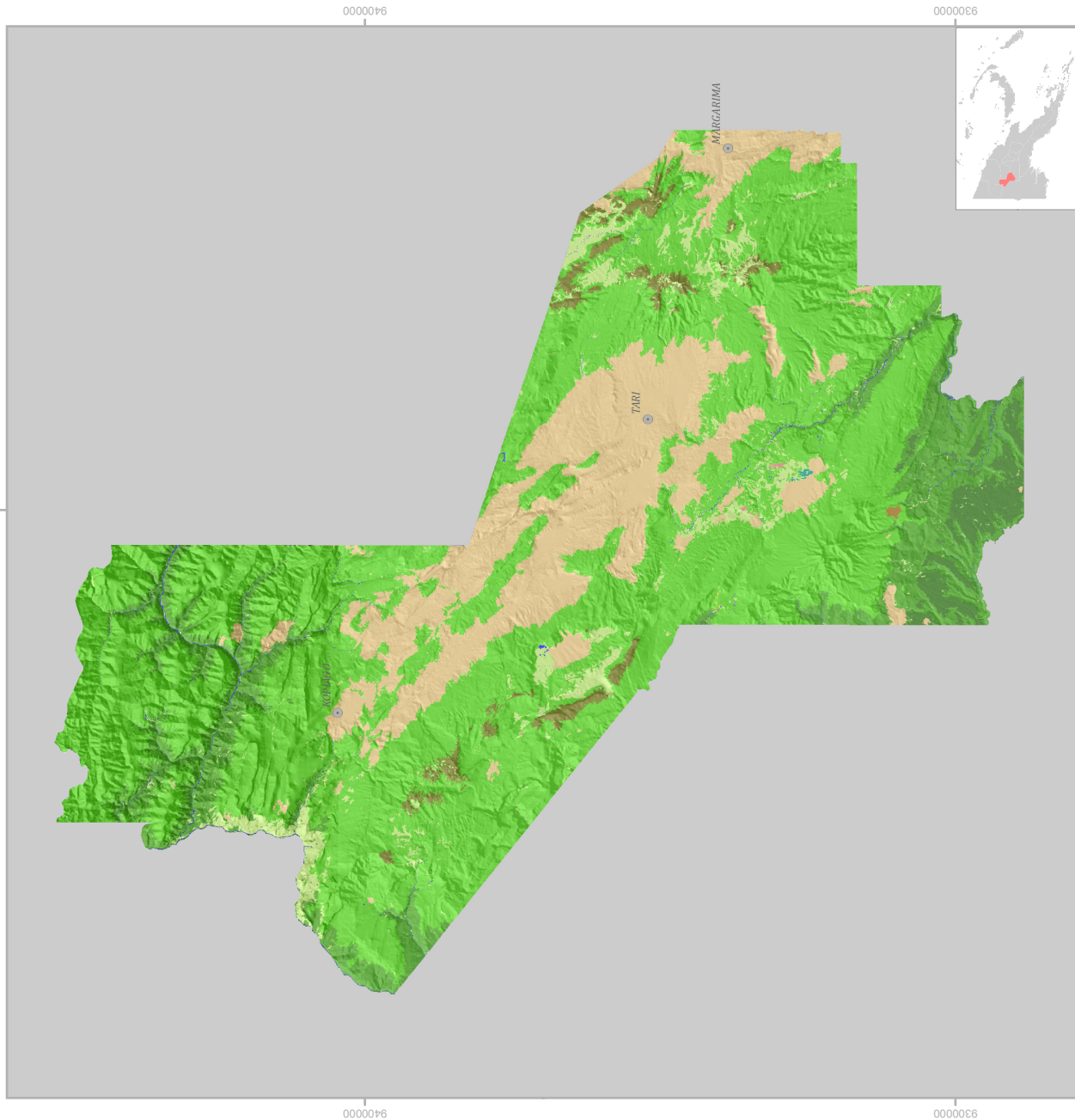
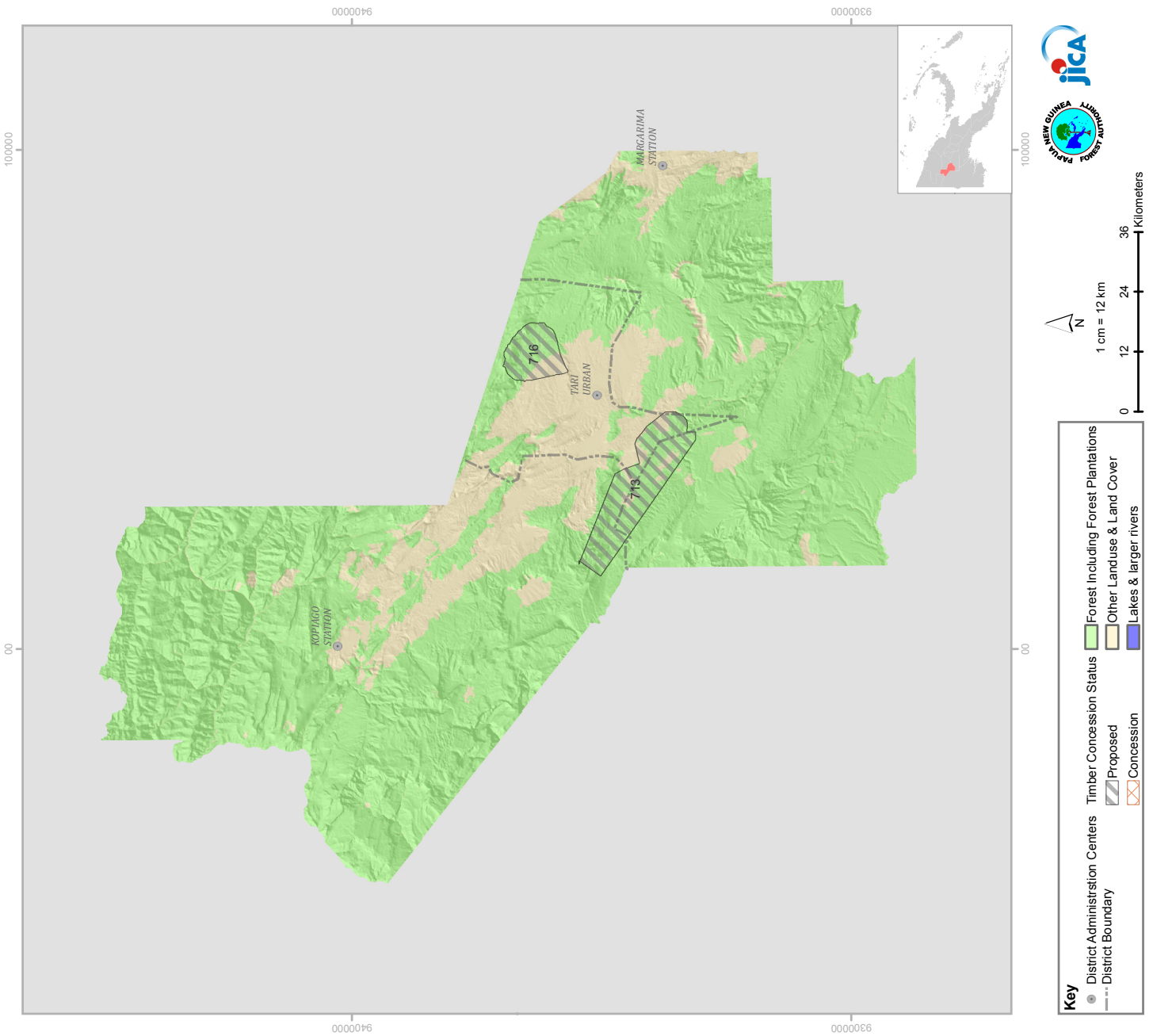


VEGETATION AND LAND COVER MAP OF HELA PROVINCE (2012 FOREST BASEMAP VERSION 1.1)



Pie Chart showing percentage in Landuse, Landcover of Hela Province.
 *Note: No District information is displayed for Hela Province.

TIMBER CONCESSION MAP OF HELA PROVINCE



PLAN_ID	NAME	AREA (ha)	CONCESSION TYPE	STATUS
713	Nogoli	27,558.25		Proposed
716	Pi Tukure TA	10,867.94		Proposed

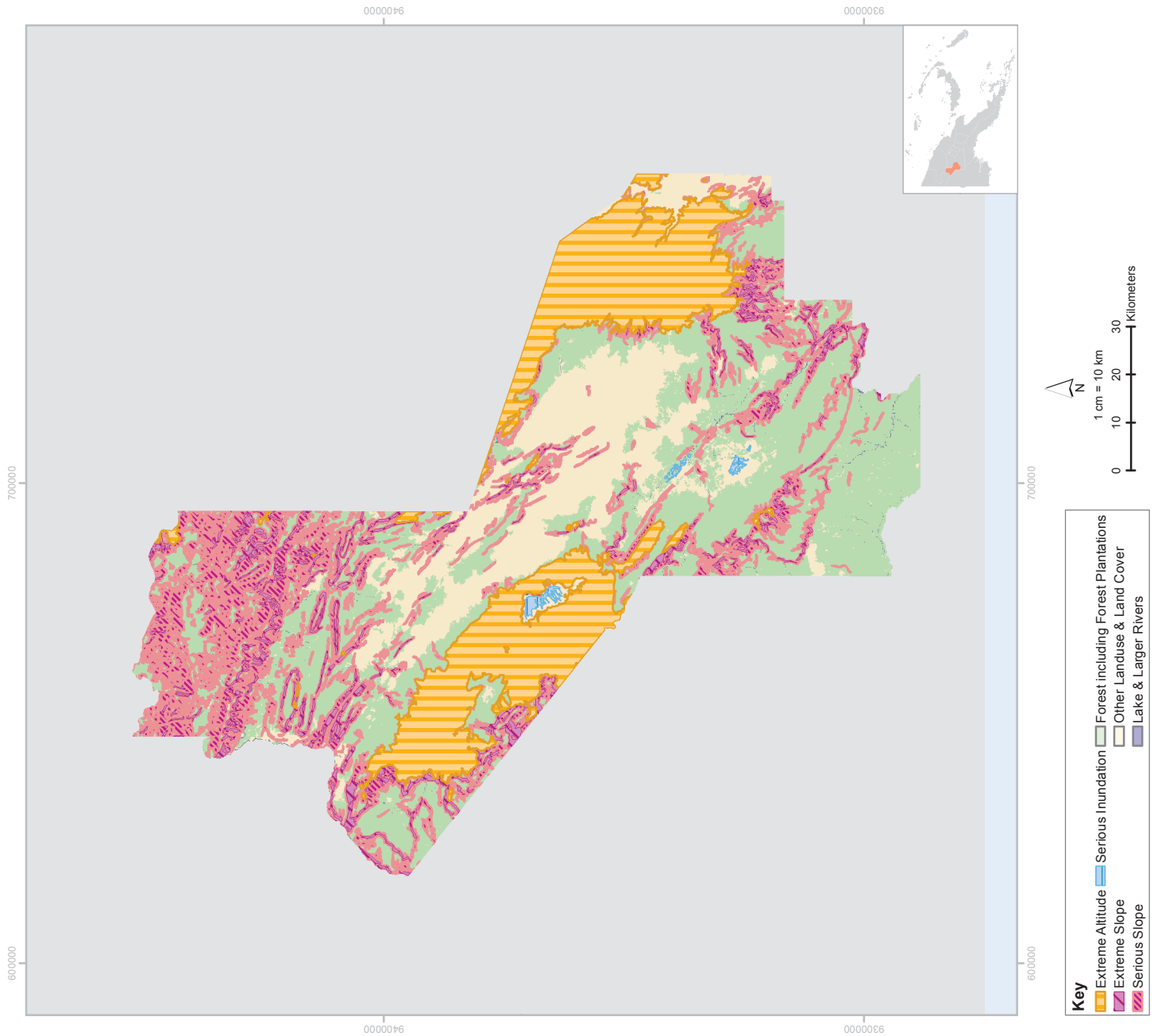
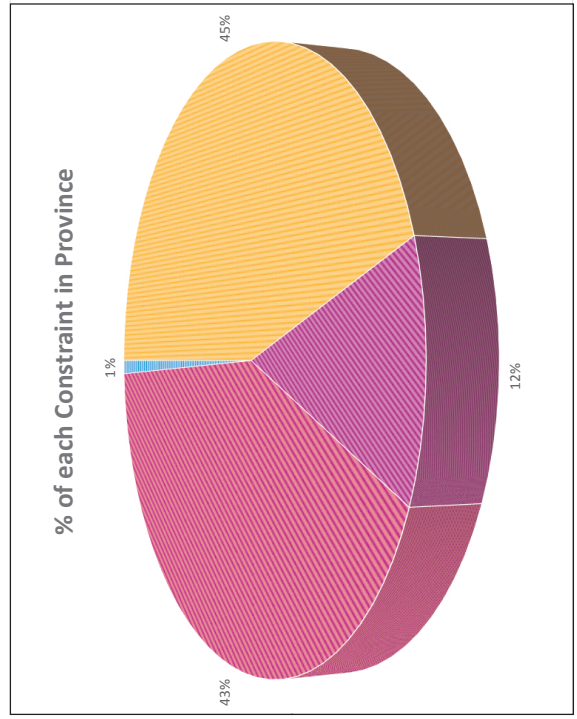
Table showing Timber Concessions of Hela Province. Information updated as at 2016.

CONSTRAINTS TO COMMERCIAL TIMBER PRODUCTION, HELA PROVINCE

Brief Report on Logging Constraints of Helia Province

Hela District Information is unavailable at this point of time to PNGFA.

Hela Province is one of the newly established provinces in the country, being formerly part of the Southern Highlands region. The province, like all the other provinces in the Highlands Region, is very mountainous and rugged. As a result, it is difficult to conduct logging operations with many of the areas being limited by 'Extreme Altitude' and 'Serious Slope'. 'Extreme Altitude' comprises 45% of all constraints present in the province while 'Serious Slope' makes up 43%. However, there are some areas in the southern part of the province (where it shares its borders with the Gulf Province) that is not affected by any of the logging constraints.



22. Jiwaka Province



General information/Overview

1. Location

Jiwaka Province is located in the highlands of PNG and consists of mountain ranges and valleys. The province was once under the Western Highlands Provincial administration and is well known for its coffee plantations in particular in the Wahgi Valley.

Provincial Administration Centre: Banz

Land area: 480, 522 ha

Population: 343, 987 (2011)

Number of District: 3 (Anglimp-South Waghi, Jimi, North Waghi)

Number of Local Level Governments (LLGs): 6 LLGs

2. Forest Information

Forest Area: 256, 300 ha






Provincial Tree

The provincial tree is 'Yar' (scientifically known as *Casuarina*¹³ *oligodon*) and is commonly found at altitude of 1,000m-2,500m (a.s.l).

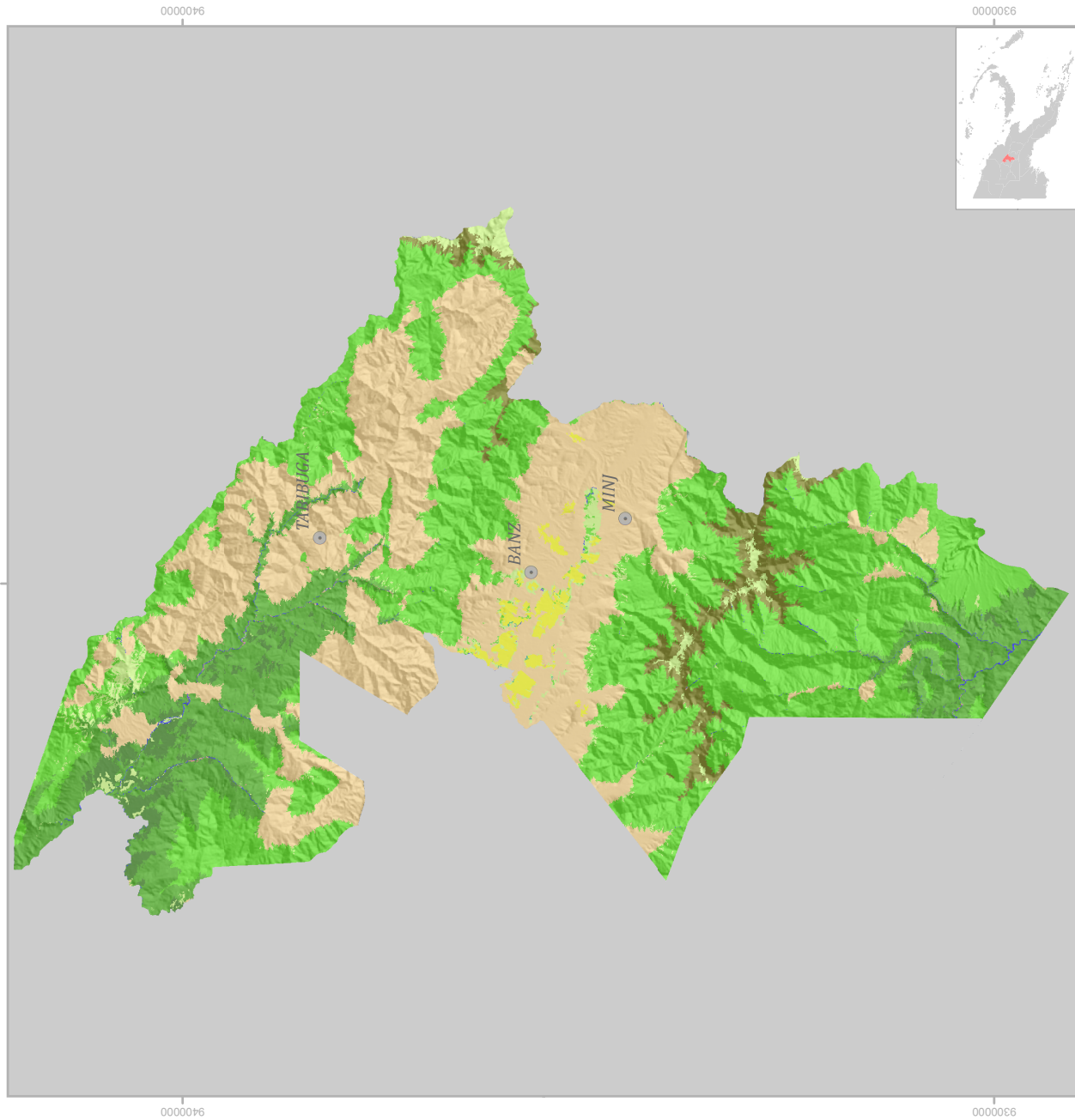
Significance of Provincial tree:

It is a hardwood species and cultivated as a shade tree for subsistence agriculture or single cash crop, for instance coffee but it has the ability in nitrogen fixing in particular for soil nutrients. Yar is commonly used by the people for various uses such as timber for the construction of homes, footbridges, fences and etc.. The leaves are used for decorations for special occasions such as cultural dances and traditional ceremonies. The leaves are also burnt to repel the insects. The tree is planted around homes as ornamentals.

¹³ There are two types of *Casuarina* species in PNG; *C. oligodon* is common in the highlands and *C. equisetifolia* is found along the coasts or lowlands.

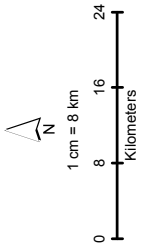
Scientific name: <i>Casuarina oligodon</i>	Family: <i>Casuarinaceae</i>	Common Name/Trade name: <i>She Oak/Yar</i>
<p><u>Description</u> A medium to large tree commonly grown in the highlands. Outer bark is grey-brown, fissured, peels off and inner bark is red. Leaves (modified – non true leaves) in whorls with six leaf scales on each whorl. Male spikes (long) at the end of branchlets with flower consisting of four scales and female flowers are red with cylindrically shaped (short) cones. The fruits (cones) are green to brown in colour which contains over 20 grey or yellow-brown winged seed.</p>		
Tree	Bark	Leaf/Leaves
		
<p>Note:</p> <p>Short description Source: http://www.fiapng.com/Nursery techniques.pdf</p> <p>Photo source (Tree, bark, leaves, flower and fruit): WAndasua, Acting Area Manager, Area Office-Highlands, Goroka, Eastern Highlands Province</p>	Flower	Fruit/Seed
		

VEGETATION AND LAND COVER MAP OF JIWAKA PROVINCE (2012 FOREST BASEMAP VERSION 1.1)

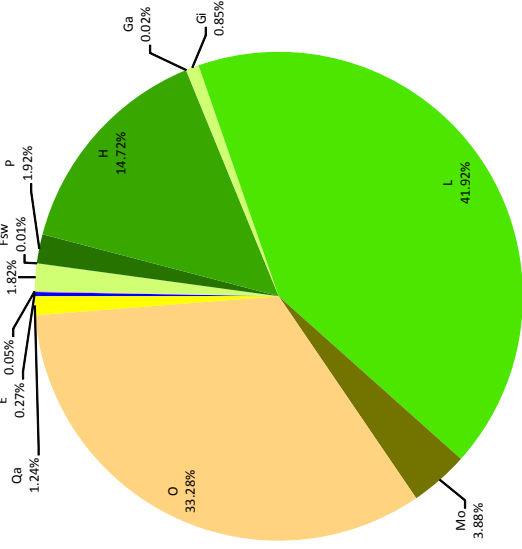


Land Use and Land Cover Classes

[Green]	P: Low Altitude Forest on Plains & Fans	[Light Green]	Fsw: Swamp Forest
[Light Green]	H: Low Altitude Forest on Uplands	[Yellow]	G: Grassland
[Light Green]	L: Lower Montane Forest	[Light Green]	Ga: Alpine grassland
[Light Green]	Mo: Montane Forest	[Light Green]	Gl: Subalpine grassland
[Light Green]	O: Agriculture Land Use	[Light Green]	E: Lakes & larger rivers
[Light Green]	Qa: Agriculture Plantation	[Light Green]	
[Light Green]	Z: Bare areas	[Light Green]	



% of Landuse Landcover Classes in Jiwaka Province

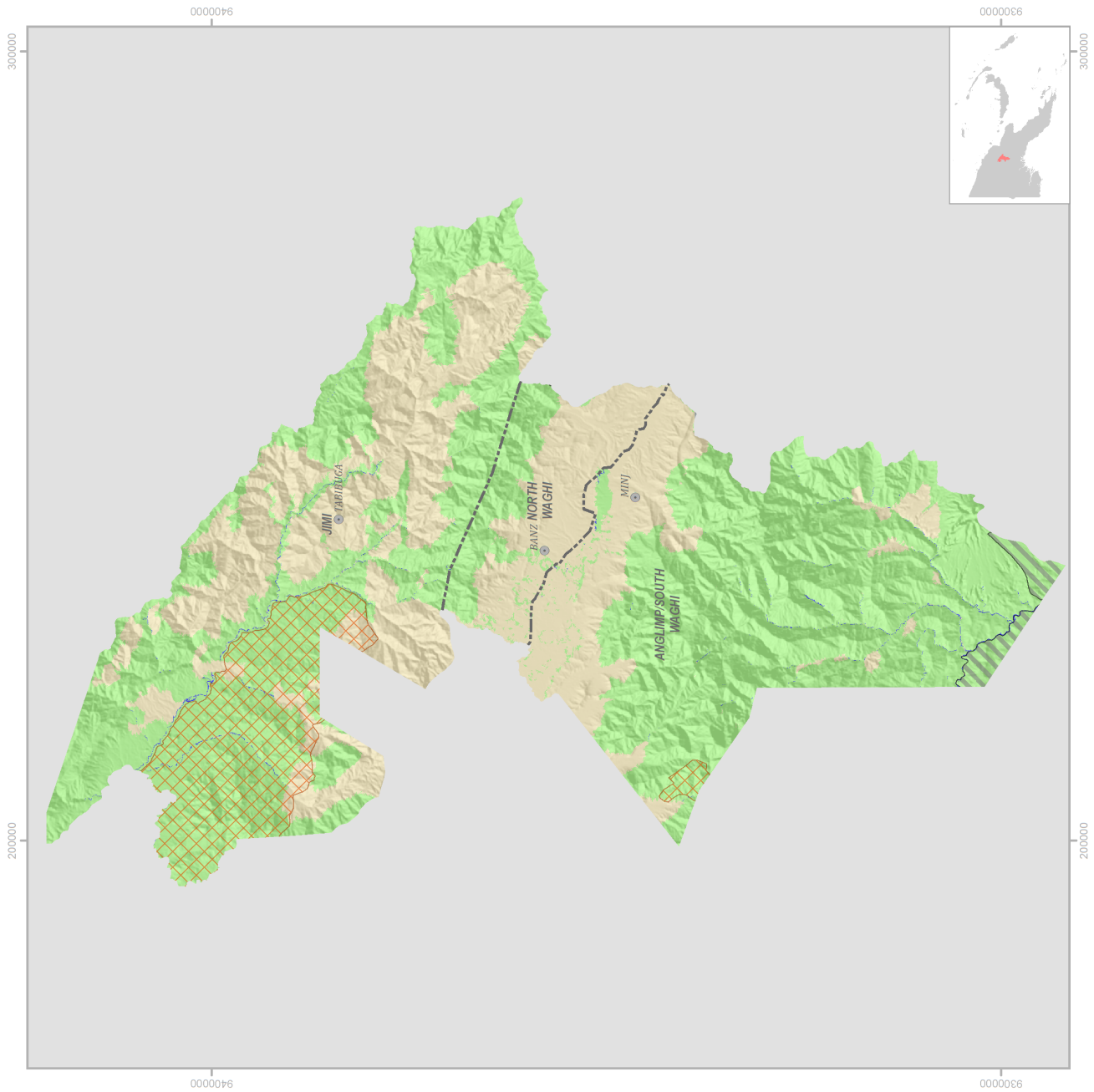


Pie Chart showing percentage in Landuse, Landcover of Jiwaka Province.

*Note: District information is not displayed.

Brief Report on Timber Concession of Jiwaka Province

TIMBER CONCESSION MAP OF JIWAKA PROVINCE

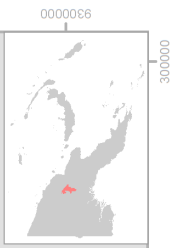


Key

- District/ Administration Centers
- Boundary
- Forest Including Forest Plantations
- Other Landuse & Land Cover
- Lakes & larger rivers
- Timber Concession Status
- Proposed
- Concession

1 cm = 8 km

0 8 16 24 Kilometers



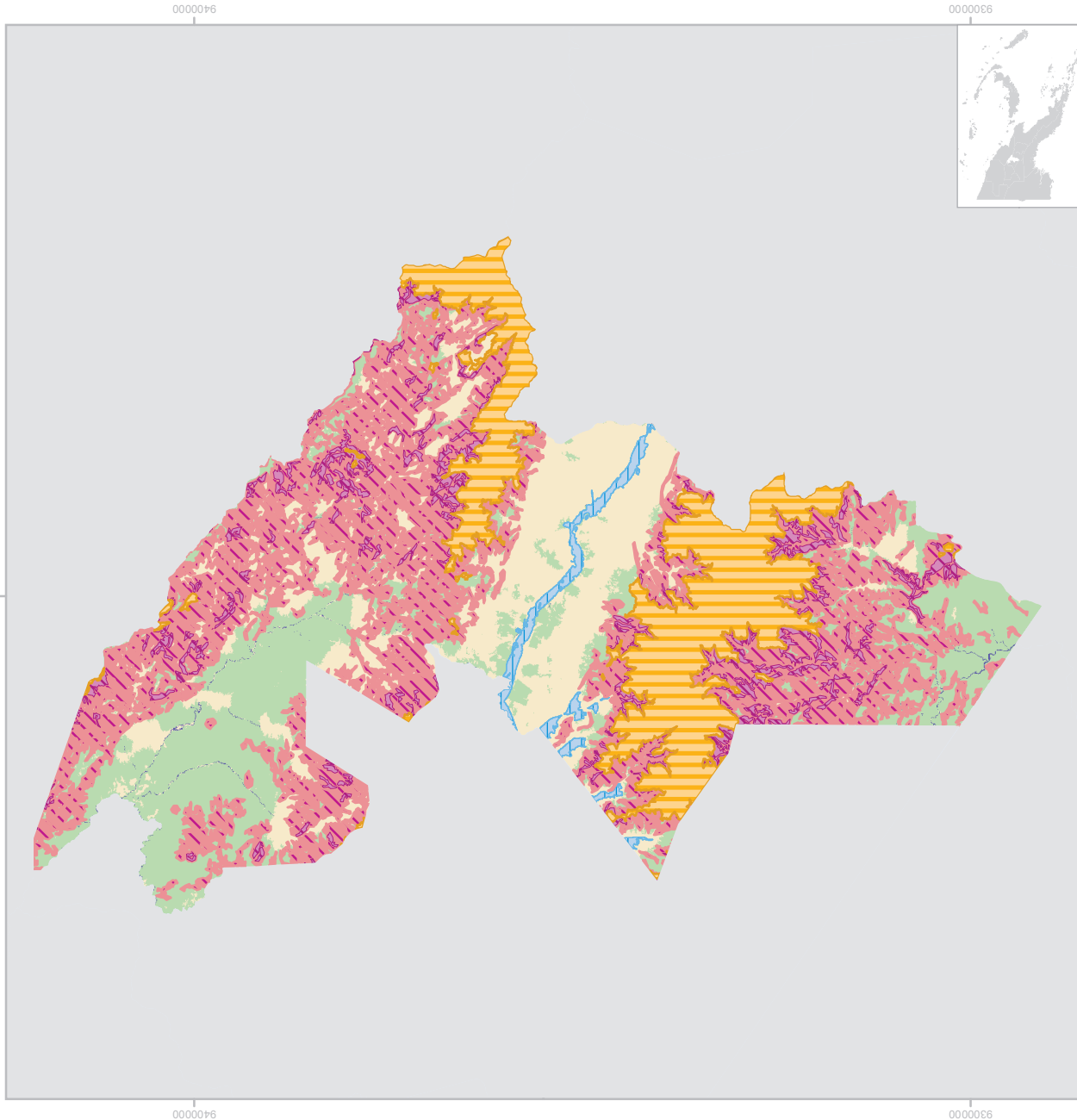
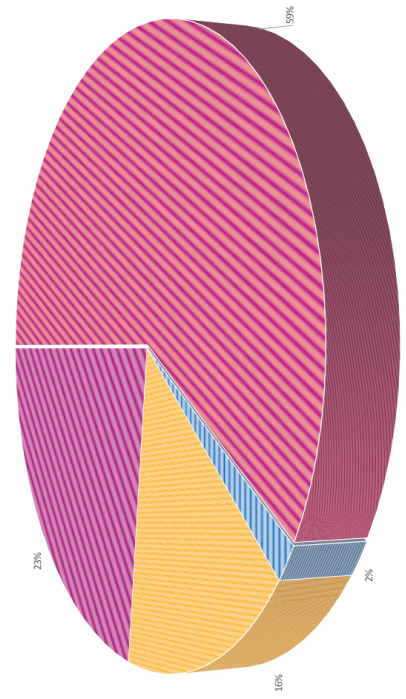
CONSTRAINTS TO COMMERCIAL TIMBER PRODUCTION, JIWAKA PROVINCE

Brief Report on Logging Constraints of Jiwaka Province

Jiwaka District Information is unavailable at this point in time to PNGFA.

Jiwaka province is located on a very fertile land, the Waghi Valley. In-between the valley lays the Waghi River, which naturally is also where the constraint 'Serious Inundation' is primarily found. 'Serious Slope' is the chief constraint found in the province, as it accounts for 59% of all constraints; it is dominate on either side of the Waghi Valley and covers most of the provinces land mass. 'Extreme Slope' is the second most dominate constraint in the province and its placement is dispersed around the southern and northern regions of the province. Following is 'Extreme Altitude', which is most present

% of each constraint with in the province



Key

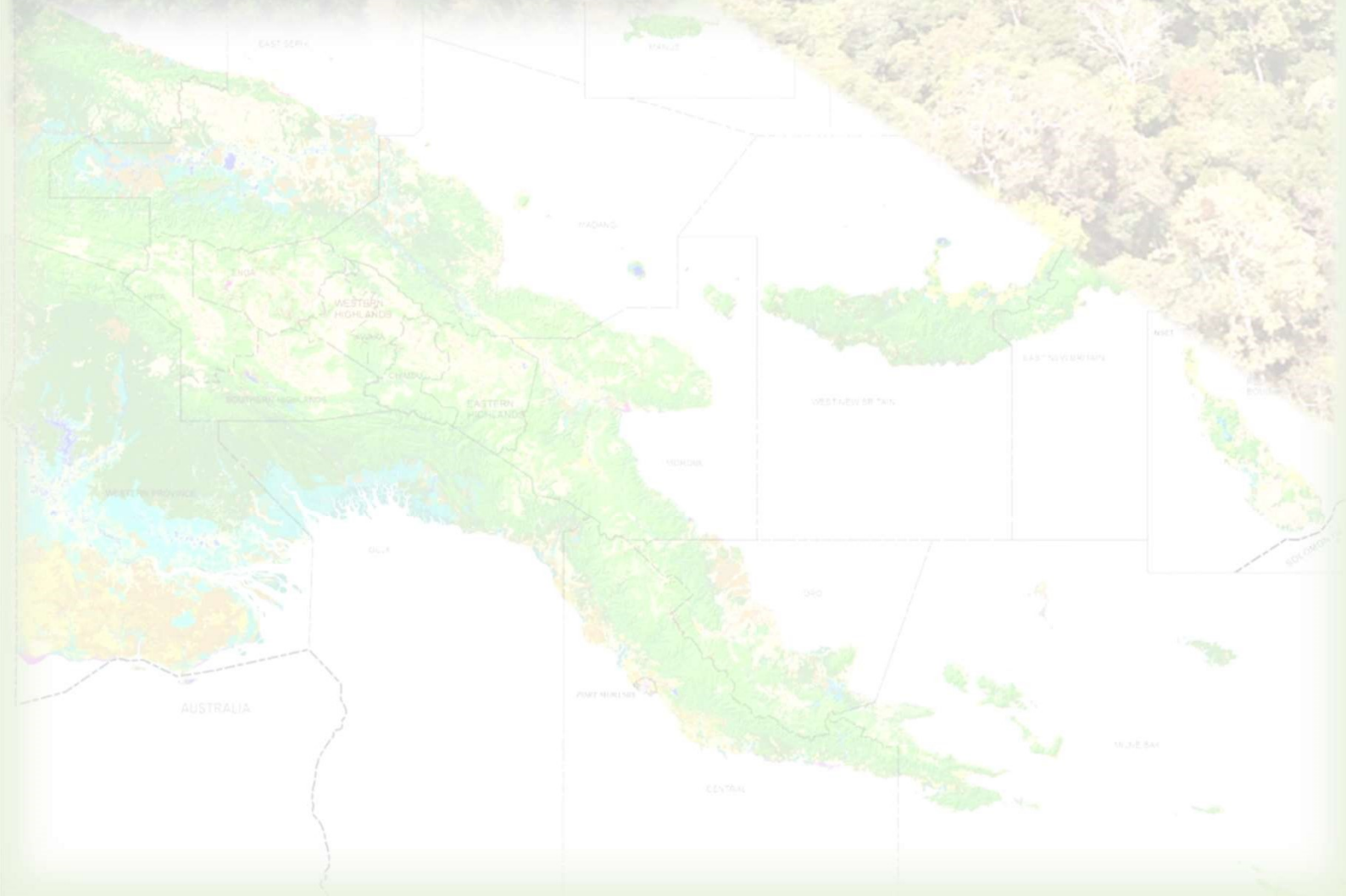
- Extreme Altitude
- Serious Inundation
- Extreme Slope
- Serious Slope
- Forest including Forest Plantations
- Other Landuse & Land Cover
- Lake & Larger Rivers

1 cm = 8 km

0 8 16 24 Kilometers

References

- Lane-Poole (1925). The Forest Resources of the Territories of Papua and New Guinea, Government of the Commonwealth of Australia, Victoria, Australia
- Paijmans (1975). Explanatory Notes to the Vegetation Map of Papua New Guinea. Land Research Series No. 35. Commonwealth Scientific and Industrial Research Organization, Melbourne, Australia.
- Saunders, J (1993). Forest Resources of Papua New Guinea. PNGRIS Publication No. 2. CSIRO, Brisbane, Australia
- Hammermaster, E.T. and Saunders, J.C., (1995), 'Forest Resources and Vegetation Mapping of Papua New Guinea. PNGRIS Publication No. 4'. AusAID, Canberra, Australia
- Bellamy and McAlpine (1995). PNGRIS Publication No.6, 1995. AusAID, Canberra, Australia.
- Bourke, R.M., Allen, B.J., Hobsbawn, P. and Conway, J., (1998), 'Papua New Guinea: Text Summaries. Agricultural Systems of Papua New Guinea Working Paper No.1'. Department of Human Geography, Research School of Pacific and Asian Studies, The Australian National University, Canberra, Australia
- McAlpine, J. and Quigley, J., (1998), 'Forest Resources of Papua New Guinea Summary Statistics from the Forest Inventory Mapping (FIM) System'. Prepared by Coffey MPW Pty Ltd for the Australian Agency for International Development and the Papua New Guinea National Forest Service
- Bryan and Shearman (2008). Papua New Guinea Resource Information System Handbook 3rd Edition, PNGRIS Publication No. 7. University of Papua New Guinea, Port Moresby, Papua New Guinea.
- REDD Research and Development Center, (2012), 'REDD-plus COOKBOOK HOW TO MEASURE AND MONITOR FOREST CARBON', Forestry and Forest Products Research Institute, Tsukuba, Ibaraki, Japan
- KKC, (2013), Final Report, The Forest Preservation Programme in the Independent State of Papua New Guinea, Kokusai Kogyo Co., Ltd. Chiyoda-ku, Tokyo, Japan
- JICA and KKC, (2014), Final Report (Second Year) of Capacity Development Project on Forest Resource Monitoring for Addressing Climate Change in Papua New Guinea, Japan International Cooperation Agency and Kokusai Kogyo Co., Ltd. Chiyoda-ku, Tokyo, Japan
- JICA and PNGFA, (2016), '2014-2019 JICA-PNGFA Project Outline - JICA-PNGFA Forestry Project 2014-2019 Fact Sheet No.1'. Papua New Guinea Forest Authority, Port Moresby, Papua New Guinea
- JICA and PNGFA, (2017), '2014-2019 Papua New Guinea Forest Base Map 2012 - JICA-PNGFA Forestry Project 2014-2019 Fact Sheet No.2'. Papua New Guinea Forest Authority, Port Moresby, Papua New Guinea
- JICA and KKC, (2017), Interim Report of Capacity Development Project for Operationalization of PNG Forest Resource Information Management System for Addressing Climate Change, Japan International Cooperation Agency and Kokusai Kogyo Co., Ltd. Chiyoda-ku, Tokyo



ISBN 9789980908667

9 789980 908667