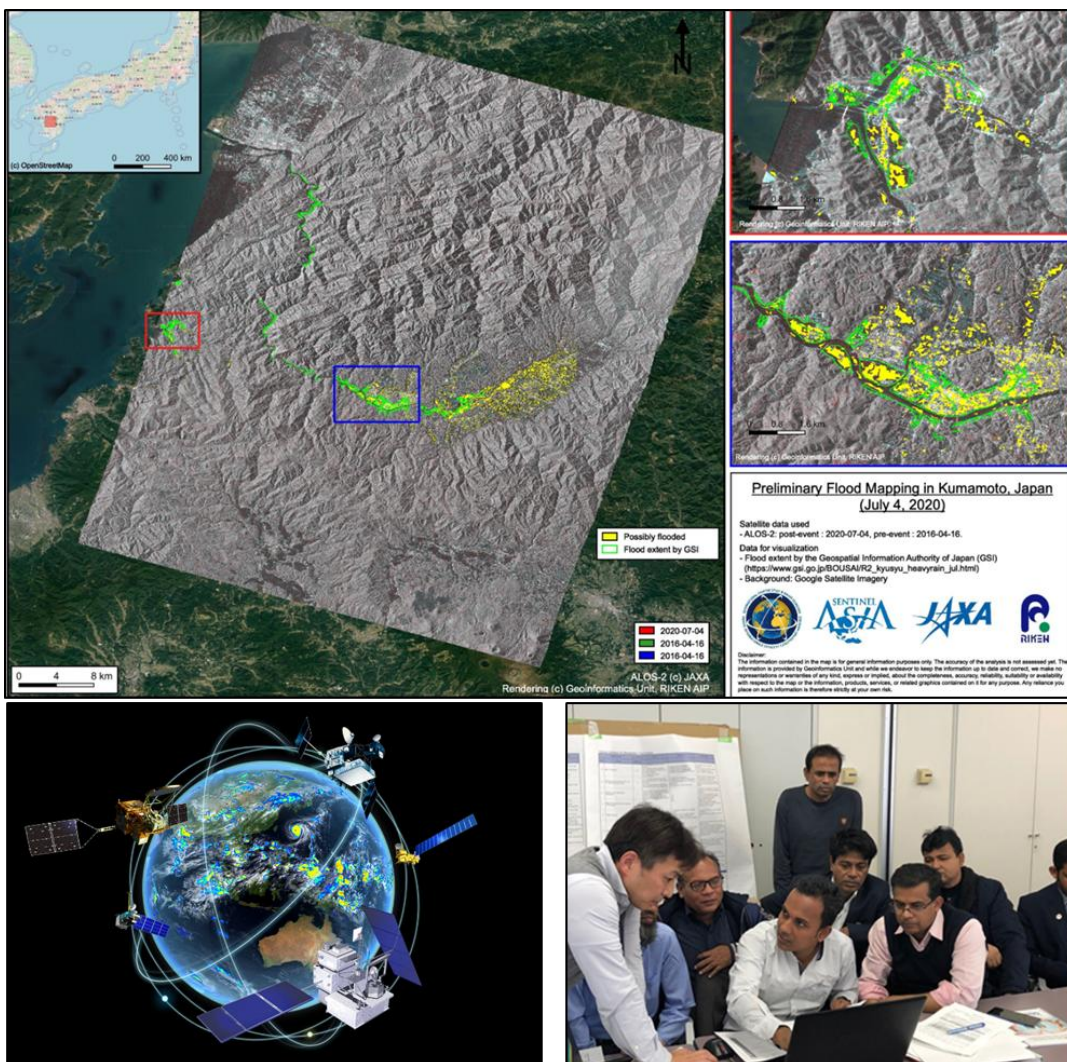


 Face-to-Face (in Japan)

Knowledge Co-Creation Program (Group and Region Focus)

Capacity Development of Space Technology Utilization for SDGs



Upper Middle: ALOS-2 © JAXA Map produced by RIKEN
Bottom Left: © JAXA
Bottom Right: JICA

Course Period:

July 27- August 7, 2026


. PRAZO DE INSCRIÇÃO NO BRASIL:

20/05/2026

. EMAIL PARA ENVIO DA INSCRIÇÃO:


Jicabr-training@jica.go.jp





How do we design
the utilization of space
technology for
Sustainable Development
Goals (SDGs) ?

Gain insight for making legal
frameworks, technology development and
its utilization by referring to
Japanese leading practices.



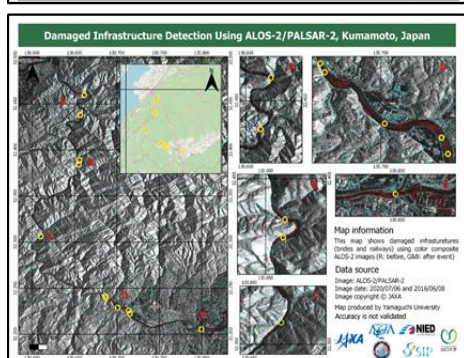
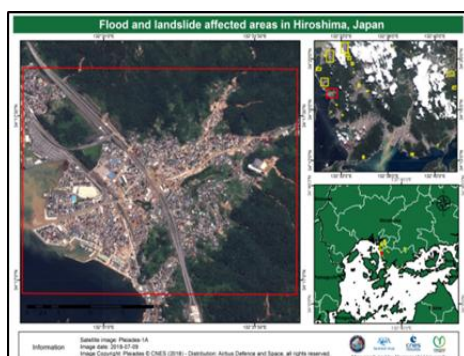
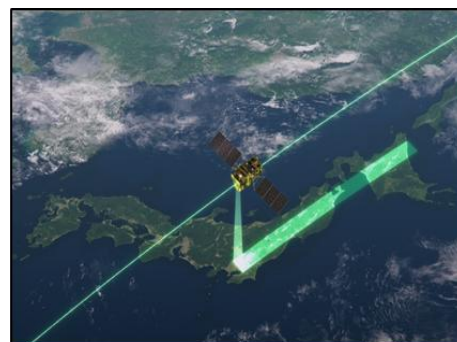
Outline

This program is designed for the government officials and/or leaders in related organizations who are engaged in making the policies regarding space development and its utilization in order to get the knowledge and skills on Japanese leading practices for SDGs.

All the sessions are held face-to-face in Japan and carried out in English.

The course period is from July 27 to August 7, 2026.

Course Capacity: 9



Top : Pleiades © CNES (2018)
 Middle: ALOS-2 © JAXA Map produced by Yamaguchi University
 Bottom: Includes Pleiades material © CNES (2022), Distribution Airbus DS. Repot produced by UNITAR/UNOSAT

Top: © JAXA
 Middle: © JAXA
 Bottom: JICA

JICA Knowledge Co-Creation Program (KCCP)

The Japanese Cabinet released the Development Cooperation Charter in June 2023, stated that “In its development cooperation, Japan has maintained the spirit of jointly creating things that suit partner countries while respecting ownership, intentions and intrinsic characteristics of the country concerned based on a field-oriented approach through dialogue and collaboration. It has also maintained the approach of building reciprocal relationships with developing countries in which both sides learn from each other and grow and develop together.” We believe that this ‘Knowledge Co- Creation Program’ will serve as a foundation of mutual learning process.

Table of Contents

For What?

(Background and Objectives) page 6

To Whom?

(Job Areas and Organizations, and Targeted Countries) page 6

When?

(Program Period) page 7

Where?

(Place Where the Program Take Place) page 7

How?

(Expected Result and Program Structure) page 8

Eligibility and Procedures

(Expectations to the Applying Organizations, Nominee Qualifications) page 12

(Required Documents for Application) page 13

(Procedures for Application and Selection) page 14

(Additional Documents to be Submitted by Accepted Candidates) page 14

(Other Conditions for Participation) page 14

(Completion Requirement)..... page 15

Administrative Arrangements

(Organizer, Implementing Partner, Expenses, Pre-departure Orientation, Reference).. page 16

Annex I

(Country Report) page 18

Annex II

(Country Report Presentation) page 19

For Your Reference page 20

For What?

Background

Space development and its utilization on Socio-economic levels attract great attention globally. For example, the utilization of satellite data can be seen in various public and private sectors, including the achievement of SDGs.

On the other hands, since space development and its utilization employ the cutting-edge technologies and require the intricate coordination among the related ministries and agencies, it is an urgent issue for the respective countries to set up the designated legal framework and policies.

Objectives

To obtain the knowledge and skills on the legal frameworks and industrial development policies by referring to the leading case studies in Japan, especially for the achievement of SDGs.

And also the space technology development and the utilization of satellite data are covered in this course.

To Whom?

Job Areas and Organizations

This program is designed for the responsible person or the person in charge in the ministries, agencies and/or related organizations who is engaged in the making of policies, space technology development and satellite data utilization.

The applying organization with the best intention to utilize the opportunity of this program will be highly valued in the selection.

Targeted Countries

Brazil, Egypt, Ghana, Kenya, Peru, Rwanda, Viet Nam,

(Note)

Some additional participations from the unlisted countries may join this course.

The Participants who have successfully completed the program will be awarded the certificate by JICA.

When? Where?

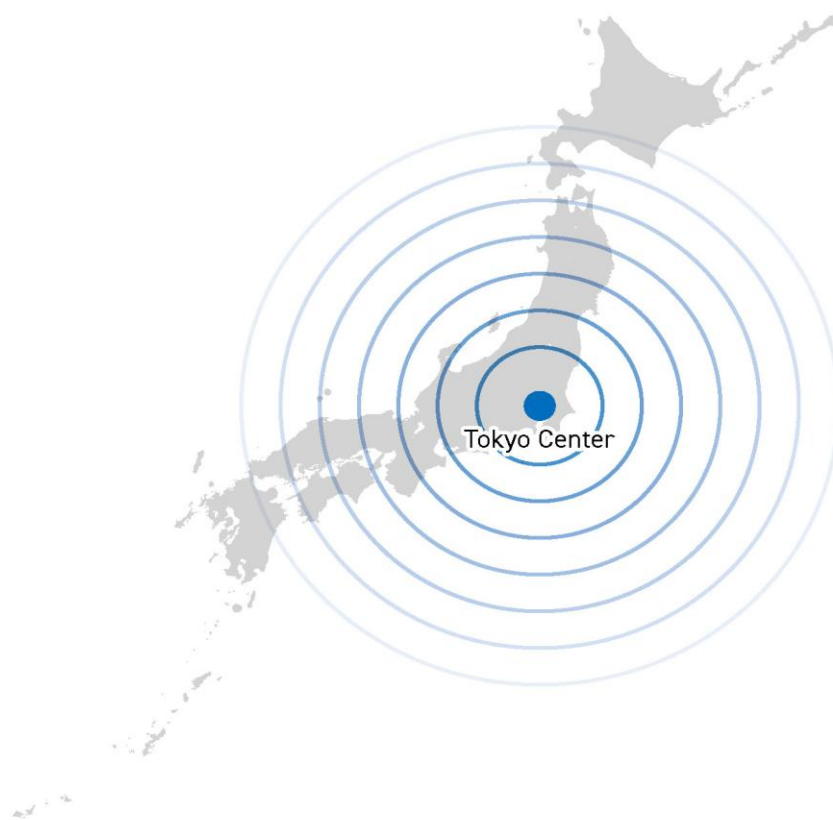
Program Period

 Face-to-Face (in Japan)

From July 27 to August 7, 2026.

This course is carried out face-to-face in Japan, organized by JICA Tokyo Center.

You can enjoy not only the learning experience with other participants from all over the world, but also a variety of cultural activities during your stay in Japan.



How?

How to Learn

- Lecture, Q&A & Discussion
- Presentation & Discussion
- Exercise
- Individual Consultation
- On Site Visit



Study



Experience



Discuss



Interact



Present

Language

English

Commitment to the SDGs



The JICA's position paper towards achieving SDGs: [JICA_torikumi_e.pdf](#)

Program Structure

<Expected Result>

- To be able to explain the policy of space development for promoting the utilization of space technology, organization, and case study in the respective country.
- To be able to explain the case study of space technology utilization for the achievement of SDGs in the respective country.

- To be able to explain the counter measure for the achievement of SDGs from the viewpoints of legal frameworks, technology development and/or utilization of satellite data in the respective country.

<Program contents>

1. Country Report Presentation in advance of the Course

It is required for all the participants to make and submit the Country Report Presentation before the course starts. The details are described in ANNEX II of this general information.

2. Presentation on Country Report and Q&A Session

Country Report Presentation by each participant and the Q&A session for sharing the current status and clarifying the issue to be tackled in each country.

3. Lectures on Policies in Japan and International Contexts

To acquire the knowledge on the basic legal frameworks and industrial policies by referring to the legal systems in Japan and international contexts to study and discuss the counter measure in each country.

+ Lecture of “Laws and Policies on Space Development”
Legal frameworks and industrial development policies/systems

+ Lecture of “Industrial Utilization of Space”
Policies on industrial utilization of space

+ Lecture of “Space Telecommunication Policies”
World trend of satellite utilization, frequency adjustment process in International Telecommunication Unit (ITU)

4. Introduction on Leading Case Studies in Japan, including SDGs

To acquire the latest knowledge and skills on the space development and its utilization, especially for the achievement of SDGs, by referring to the leading case studies in Japan.

5. Actual Practice/Exercise by the Participants

The actual practice/exercise of different interference image analysis by using the latest Japan’s satellite data platform “tellus” and other platforms.

<https://www.tellusxdp.com/en-us/about>

6. Individual Consultation

The individual consultation by the implementing partner is held to understand the program and make final presentation upon each participant’s request.

7. On Site Visit

Site visits to Japan Aerospace Exploration Agency, Tsukuba (JAXA) and other R&D facilities like Tokyo University, Kyushu Institute of Technology and Japanese companies.



8. Making Networks with Japanese Leading Start-up Companies related to Space Technologies

To meet and discuss with some leading start-up companies related to space technologies in Japan during the course.

9. Presentation on Training Result

Presentation of training result, so called “Achievement Briefing” by each participant and discussion among all participants and implementing partners.

10. Evaluation / Feedback of Course

(Note)

The actual program contents and order may change.

Implementing Partner

Mr. KOBAYASHI Yoshinori
Director
Japan Space Forum



“We can share the new ideas and policies to apply space technologies in your country through this program. And also the outcome from this program may find new business partners/markets contributing to SDGs across the world. Looking forward to seeing you in the near future.”

Senior Advisor (JICA)

Mr. YAMANAKA Atsushi
Office of STI/DX, Japan International Cooperation Agency (JICA)



“Active utilization of space resources is increasingly relevant to mitigate and solve both global and local challenges. The course is designed to allow participants to acquire knowledge from global best examples of space and space-use technologies, conducive institutional framework and ecosystem, space and space-use policies and regulations, among others. We hope that the participants of the course will utilize the newly acquired knowledge to enrich and advance their country’s space and space-use program to help achieve the socio-economic development of the country.”

Program Officer (JICA)

Mr. MORI Yoshinori
Tokyo Center, Japan International Cooperation Agency (JICA)



“The space technology has advanced rapidly and gained more importance in terms of security as well as economy. Wish we will co-progress space development and literally reach for the stars together.”

Eligibility and Procedures

Expectations to the Applying Organizations

This program is designed primarily for the organizations that intend to address specific issues or problems identified in their operations. The applying organizations are expected to use this program for those specific purposes.

This program is enriched with the contents and facilitation schemes specially developed in collaboration with relevant prominent organizations in Japan. These special features enable the program to meet specific requirements of the applying organizations and effectively facilitate them toward solutions for the issues and problems.

In that sense, the applying organizations are expected to nominate the qualified candidates to address the said issues and/or problems, carefully referring to the qualifications below.

Nominee Qualifications

The applying organizations are expected to select nominees who meet the following qualifications.

【Remarks】

Each Organization is requested to strongly encourage female candidates to apply for the course to accelerate the realization of gender equality and women's empowerment.

Disabilities: The organizations shall not exclude people with disabilities. They have an opportunity to apply for the program if they meet the required qualifications. However, some programs might have difficulty for them to participate due to environmental and other conditions. Reasonable accommodation will be considered for participants with disabilities. ("Reasonable accommodation" means necessary and appropriate modification and adjustments not imposing a disproportionate or undue burden, where needed in a particular case.)

Essential Qualifications

- 1) **Current Duties:** be a responsible person or a person in charge (officer, engineer, researcher, etc.) of space development and satellite data utilization in the ministries, agencies, and/or related organizations.
And who has full knowledge of the concept and aims of SDGs.
- 2) **Experience in the Relevant Field:** have more than 1year experience in the above mentioned fields.
- 3) **Educational Background:** be a graduate of university or equivalent.
- 4) **Language:** have an excellent English capability enough to make presentation, exchange and discuss ideas during the program equivalent to TOEFL iBT 100 or above.
- 5) **Technical Requirements:** need to bring your own laptop meets below specs.
 - a. Hardware (Minimum Requirement)
 - Processor: Intel Core 2 Duo or higher; 2GHz or higher
 - Memory: 4GB of RAM or higher
 - Hard Drive Space: 5GB free disk space
 - Others: Webcam Microphone, and Audio output Device (Speaker or Headset)
 - b. Software
 - [OS] Latest version of Windows / Mac OS / Android
 - [Application] Latest and official version of Microsoft Office (Excel, PowerPoint) and web browser (Google Chrome/ Firefox/ Microsoft Edge /Safari)
 - *You may install new software on your laptop for exercise of satellite image analysis, so in case it's prohibited by your office, please notify JICA at the time of application.
- 6) **Health:** must be in good health to participate in the program in Japan. Participant's health and safety should be most respected. Preexisting conditions and pregnancy may lead to health problems due to stress from international travel, different climates, and new living environment. In recent years, regrettable cases have occurred, including the exacerbation of symptoms after arrival and, in the case of pregnancy, stillbirth. Some participants have also incurred substantial out of pocket medical costs. Please take a moment to consider whether to participate after confirming your agreement to the points below.
 - ① Questionnaire ("QUESTIONNAIRE ON MEDICAL STATUS AND RESTRICTION") on Application Form
 - If any of the following apply, you must state them accurately in the questionnaire, even if they do not affect your current work or daily life.
 - a. Chronic diseases (e.g., hypertension, diabetes)
 - b. Conditions currently under treatment

c. Past illnesses that have been resolved (including serious conditions affecting the heart, liver, or brain; tuberculosis, etc.)

d. Pregnancy (for female applicants)

② Medical certificate

Please submit a medical certificate issued by a doctor that your condition is stable and that, from a medical standpoint, there is no problem with your participation in KCCP in Japan.

Applicable cases:

a. Chronic diseases (e.g., hypertension, diabetes)

b. Conditions currently under treatment

c. Past illnesses that have been resolved (including serious conditions affecting the heart, liver, or brain; tuberculosis, etc.)

③ Reporting changes

If pregnancy or any health issues are identified after submitting the form, please report them to JICA promptly.

④ Insurance coverage

Medical and additional living expenses related to pregnancy and preexisting conditions are NOT covered by insurance arranged by JICA. Such costs must be borne entirely by the participant; JICA assumes no liability.

* Please understand that insurance coverage applies only to sudden illness or injury occurring during your stay in Japan.

* Medical expenses in Japan could be a significant financial burden when not covered by insurance.

Recommended Qualifications

- 1) **Age:** preferred to be less than 45 years old
- 2) **Gender Equality and Women's Empowerment:** JICA seeks more female applicants due to the past records of fewer applications from women. JICA is committed to promoting gender equality and women's empowerment and provides equal opportunities for all applicants regardless of their sexual orientation or gender identity.

Required Documents for Application

- 1) **Application Form:** The Application Form is available at the JICA overseas office (or the Embassy of Japan)
 - * If you have any difficulties/disabilities which require assistance, please specify necessary assistances in the QUESTIONNAIRE ON MEDICAL STATUS RESTRICTION (1-

(c) of the form. Information will be reviewed and used for reasonable accommodation.

- 2) **Photocopy of Passport:** You should submit it with the application form if you possess your passport which you will carry when entering Japan for this program. If not, you are requested to submit its photocopy as soon as you obtain it.
*The following information should be included in the photocopy: Name, Date of Birth, Nationality, Sex, Passport Number and Expiry Date
*It is recommended that your passport be valid for more than 6 months after the last day of the program.
- 3) **English Score Sheet:** to be submitted with the application form, if the nominees have any official English examination scores. (e.g., TOEFL, TOEIC, IELTS)
*In case the nominee does not have it, JICA will take the English interview test.
- 4) **Country Report:** to be submitted with the application form. This report will be used as one of the nominees' screening documents (Please refer to ANNEX I).
- 5) **Existing Documents explaining Strategy of Organization/Country:** to be attached with the Country Report (Please refer to ANNEX I).

Procedures for Application and Selection

1) Submission of the Application Documents

Closing date for applications: Please confirm the local deadline with JICA overseas office (or the Embassy of Japan).

(All the necessities documents must be collected at JICA Tokyo Center by June 8, 2026)

2) Selection

The primary screening is conducted at the JICA overseas office (or the embassy of Japan) after receiving all the necessary documents. Final selection is made by JICA Tokyo Center with consultation by the concerned organizations.

Applying organizations with the best intentions to utilize the opportunity will be highly valued.

The Government of Japan will examine the applicants who belong to the military or other military-related organizations and/or who are enlisted in the military, taking into consideration their duties, positions and other relevant information in a comprehensive manner to be consistent with the Development Cooperation Charter of Japan.

3) Notice of Acceptance

The notification of result will be made by JICA overseas office (or the Embassy of Japan) **not later than June 19, 2026.**



Additional Document to be Submitted by Accepted Candidates

The accepted participants are required to make “Country Report Presentation” and submit to JICA Tokyo Center by July 13, 2026.

(email address: Mori.Yoshinori2@jica.go.jp)

The participant is required to give the presentation on Day 1 of this course. (Please refer to ANNEX II)

Other Conditions for Participation

The accepted participants are required

- (1) to strictly observe the course schedule,
- (2) not to change the air ticket (and flight class and flight schedule arranged by JICA) and lodging by the participants themselves,
- (3) to understand that leaving Japan during the course period (to return to home country, etc.) is not allowed (except for programs longer than one year),
- (4) not to bring or invite any family members (except for programs longer than one year),
- (5) to carry out such instructions and abide by such conditions as may be stipulated by both the nominating Government and the Japanese Government in respect of the course,
- (6) to observe the rules and regulations of the program implementing partners to provide the program or establishments,
- (7) not to engage in political activities, or any form of employment for profit,
- (8) to discontinue the program, should the participants violate Japanese laws or JICA's regulations, or the participants commit illegal or any type of immoral conduct including sexual harassment, or get critical illness or serious injury and be considered unable to continue the course. The participants shall be responsible for paying any cost for treatment of the said health conditions except for the medical care stipulated in “Administrative Arrangements 3. Expenses (3)”,
- (9) to return the total amount or a part of the expenditure for the KCCP depending on the severity of such violation, should the participants violate the laws and ordinances,
- (10) not to drive a car or motorbike, regardless of an international driving license possessed,
- (11) to observe the rules and regulations at the place of the participants' accommodation, and
- (12) to refund allowances or other benefits paid by JICA in the case of a change in schedule,

(13) to promptly notify JICA in case there are any changes in the health status (e.g. new injury, illness or discovery of pregnancy) from the time of application.

Completion Requirement

Certificate of completion will be presented by JICA when the conditions below are met.

- (1) to attend 70% of the program and more.
- (2) to submit all the assignments (report and questionnaire) requested by JICA.

Administrative Arrangements

1. Organizer (JICA Center in Japan)

- (1) Center: JICA Tokyo Center (JICA TOKYO)
- (2) Program Officer: Mr. MORI Yoshinori (Mori.Yoshinori2@jica.go.jp)

2. Implementing Partner

Japan Space Forum (<https://www.jsforum.or.jp/english/top/>)

3. Expenses

The following expenses in Japan will be provided by JICA:

- (1) Allowances for meals, living expenses, and stopover.
- (2) Expenses for study tours (basically in the form of train tickets).
- (3) Medical care for participants who become ill after arriving in Japan (the costs related to pre-existing illness, pregnancy, or dental treatment are **not included**).
- (4) Expenses for program implementation, including materials.
- (5) For more details, please see “III. ALLOWANCES” of “KENSU-IN GUIDE BOOK,” which will be given before departure for Japan.




*Link to JICA HP (English): [For participants](#) | [What We Do - JICA](#)

4. Pre-departure Orientation

A pre-departure orientation will be held at respective country’s JICA overseas office (or the Japanese Embassy), to provide participants with details on travel to Japan, conditions of the course, and other matters.

Part I: Knowledge Co-Creation Program and Life in Japan	
English ver.	https://www.youtube.com/watch?v=SLurfKugrEw



	
Part II: Introduction of JICA Centers in Japan	
JICA Tokyo	https://www.jica.go.jp/tokyo/english/office/index.html  https://www.youtube.com/watch?v=qUsxpNG5p4E 

5. Reference

KENSHU-IN GUIDE BOOK

For more detailed terms and conditions

[JICA Knowledge Co-Creation Program\(KCCP\) | 研修事業 \(KCCP\) |](#)

Video: JICA Predeparture Briefing

For more information on life in Japan and KCCP [JICA Knowledge Co-Creation Program\(KCCP\) | 研修事業 \(KCCP\) |](#)

Website: JICA

https://www.jica.go.jp/english/our_work/types_of_assistance/tech/acceptance/training/index.html



Annex I

Country Report

All the applicants are required to make and submit the Country Report with the Application Form to JICA overseas office (or the Embassy of Japan). It will be used as one of the screening documents.

“Country Report” should be made along the agenda below in the format of A4 size, about 6 pages in English. It is highly recommended to include the photos, graphics, maps and figures for easy understanding.

It will be collected together with the application form and other necessary documents at JICA Tokyo Center via JICA overseas office by June 8, 2026.

Agenda of the Country Report.

1. Country General Information
2. Space Development Policy and National Framework
3. Profile of Organization related to space development and utilization
4. Current and Upcoming Projects with Budget Plan
5. Challenge / Issue to be Tracked
6. Expectation to This Program

Existing Documents explaining Strategy of Organization/Country.

It is required to attach existing documents explaining the strategy of organization and/or country with the Country Report.

Annex II

Country Report Presentation

The participant is required to give the 10 minutes presentation on Day 1 of this program to share the basic information about participant's country and work among all the participants including implementing partners which makes the program more fruitful.

The Presentation should be made along the same agenda as Country Report (ANNEX I) in the format of "Power Point", about 6 pages in English and must be submitted to JICA Tokyo Center (email address: Mori.Yoshinori2@jica.go.jp) by July 13, 2026. The presentation template will be sent to the accepted participants separately after the notification of acceptance on June 19, 2026.

Agenda of Country Report Presentation (same as Country Report)

1. Country General Information
 2. Space Development Policy and National Framework
 3. Profile of Organization related to space development and utilization
 4. Current and Upcoming Projects with Budget Plan
 5. Challenge / Issue to be Tracked
 6. Expectation to This Program
-

For Your Reference

JICA and Capacity Development

Technical cooperation is people-to-people cooperation that supports partner countries in enhancing their comprehensive capacities to address development challenges by their own efforts. Instead of applying Japanese technology per se to partner countries, JICA's technical cooperation provides solutions that best fit their needs by working with people living there. In the process, consideration is given to factors such as their regional characteristics, historical background, and languages. JICA does not limit its technical cooperation to human resources development; it offers multi-tiered assistance that also involves organizational strengthening, policy formulation, and institution building.

Implementation methods of JICA's technical cooperation can be divided into two approaches. One is overseas cooperation by dispatching experts and volunteers in various development sectors to partner countries; the other is domestic cooperation by inviting participants from developing countries to Japan. The latter method is the Knowledge Co-Creation Program, formerly called Training Program, and it is one of the core programs carried out in Japan. By inviting officials from partner countries and with cooperation from domestic partners, the Knowledge Co-Creation Program provides technical knowledge and practical solutions for development issues in participating countries.

The Knowledge Co-Creation Program (Group & Region Focus) has long occupied an important place in JICA operations. About 400 pre-organized courses cover a wide range of professional fields, ranging from education, health, infrastructure, energy, trade and finance, to agriculture, rural development, gender mainstreaming, and environmental protection. A variety of programs is being customized by the different target organizations to address the specific needs, such as policy-making organizations, service provision organizations, as well as research and academic institutions. Some programs are organized to target a certain group of countries with similar developmental challenges.

Japanese Development Experience

Japan, as the first non-Western nation to become a developed country, built itself into a country that is free, peaceful, prosperous and democratic while preserving its tradition. Japan will serve as one of the best examples for our partner countries to follow in their own development.

From engineering technology to production management methods, most of the know-how that has enabled Japan to become what it is today has emanated from a process of adoption and adaptation, of course, has been accompanied by countless failures and errors behind the success stories.

Through Japan's progressive adaptation and application of systems, methods and technologies from the West in a way that is suited to its own circumstances, Japan has developed a storehouse of knowledge not found elsewhere from unique systems of organization, administration and personnel management to such social systems as the livelihood improvement approach and governmental organization. It is not easy to apply such experiences to other countries where the circumstances differ, but the experiences can provide ideas and clues useful when devising measures to solve problems.

JICA, therefore, would like to invite as many leaders of partner countries as possible to come and visit us, to mingle with the Japanese people, and witness the advantages as well as the disadvantages of Japanese systems, so that integration of their findings might help them reach their developmental objectives.



This information pertains to one of the JICA Knowledge Co-Creation Programs (Group & Region Focus) of the Japan International Cooperation Agency (JICA) implemented as part of the Official Development Assistance of the Government of Japan based on bilateral agreement between both Governments.



Correspondence

For enquiries and further information, please contact the JICA local office or Embassy of Japan.

Further, address correspondence to:

JICA Tokyo Center (JICA Tokyo)

Address: 49-5, Nishihara 2-chome, Shibuya-ku, Tokyo 151-0066, Japan

TEL: +81-3-3485-7659 FAX: +81-3-3485-7904

("81" is the country code for Japan, and "3" is the local area code)