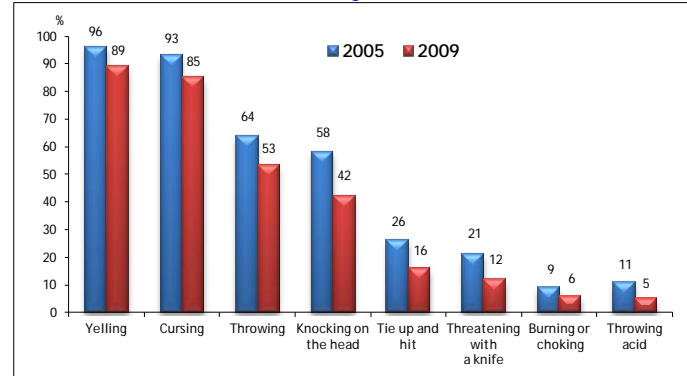


## Violence Against Women

According to the 2005 nation-wide survey, 64% of the respondents knew a husband who physically abuses his wife. In 2009, this has decreased to 53%, which is a positive sign that prevalence of domestic violence may be decreasing.

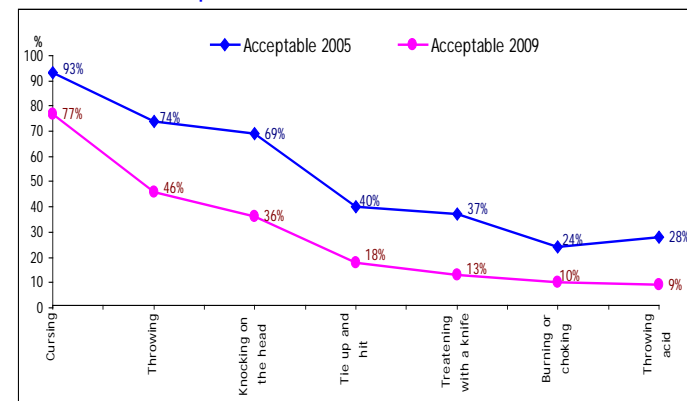
Percentage of persons who reported knowing a husband who does any of the following to his wife



Source: Violence Against Women: 2009 Follow-Up Survey

Overall, compared to 2005, fewer people find violence acceptable and more people are recognizing that violence illegal.

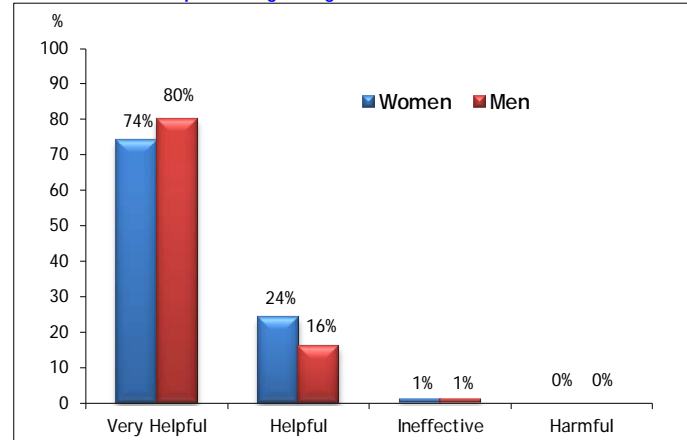
Percentage of respondents who consider the following acts ever acceptable for a man to do this to his wife



Source: Violence Against Women: 2009 Follow-Up Survey

The Law on the Prevention of Domestic Violence and the Protection of the Victims was adopted in 2005 and 96% of men consider the domestic violence law very helpful/helpful; 98% of women also agree.

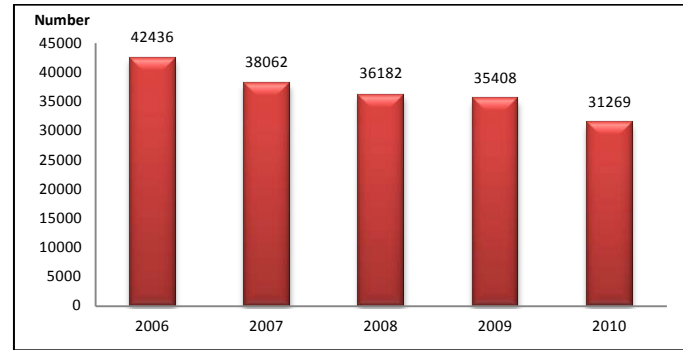
Perceptions regarding the usefulness of the law



Source: Violence Against Women: 2009 Follow-Up Survey

The Commune Database (CDB) collects information from every Cambodian commune, about the number of families affected by Domestic violence. According to that statistic, domestic violence has decreased from 42,436 cases in 2006 to 31,269 cases in 2010 meaning a decrease of 26.3%. If we take population growth into consideration the decrease is almost 35%.

Number of families who experienced domestic violence by year in Cambodia 2006 to 2010

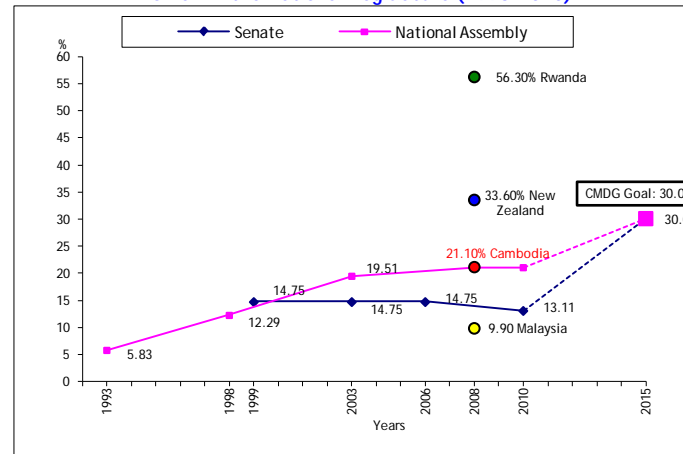


Source: Report on Data Collection and Monitoring on Violence against Women in Cambodia 2010.

## Decision Making

Women hold 13.11% of the seats in the Senate in 2010 and 21.10% in the National Assembly (in 2008). Women representation in the parliament in Cambodia is slightly higher than the ASEAN average (Malaysia 14.2%, Thailand 14%, Indonesia 18%), but internationally several countries have achieved parity in elected bodies (Rwanda 56.30%, New Zealand 33.60%) The CMDG goal is set to 30%.

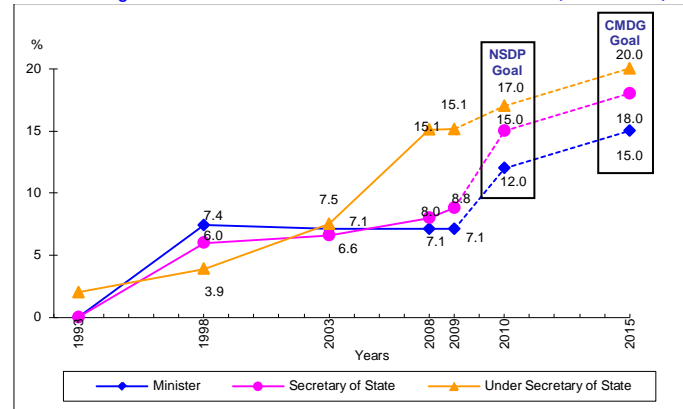
Women in the National Legislature (1993-2010)



Source: National Election Council (NEC) 2011.

The representation of women in government has been increasing to a level approaching the NSDP goal as in below figure. However, in order to achieve the CMDG, concerted efforts are necessary for the remaining elections.

Percentage of Women in Senior Position in Government (1998-2009)



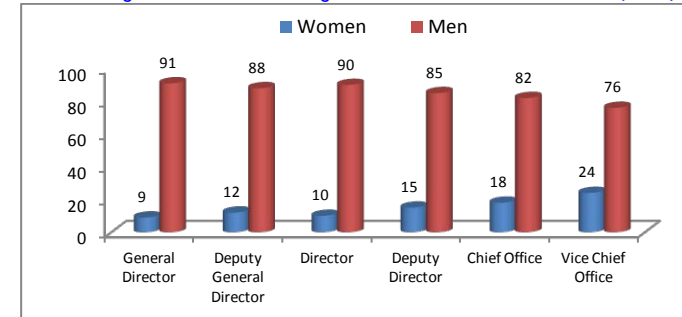
Source: State Secretariat of Public Civil Service (As of 31 December, 2011)

The Council for Administrative Reform has developed a policy to increase the number of women in civil service and in the management positions, which is expected to impact the promotion of women in the future.

Number and Percentage of Public Civil Servant 2007-2010

2007		2008		2009		2010	
Women	Men	Women	Men	Women	Men	Women	Men
57,114	119,230	61,298	120,930	61,946	123,015	62,377	121,458
32%	68%	34%	66%	33%	67%	34%	66%

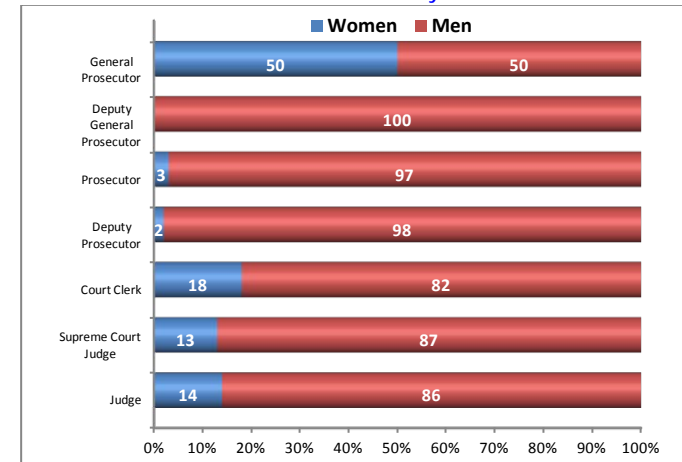
Percentage of Women in Managerial Position at National Level (2011)



Source: State Secretariat of Public Civil Service (As of 31 December, 2011)

The percentage of women in the judiciary increased slightly in 2010. There is one women general prosecutor (50%), but no female deputy general prosecutor. 13% of Supreme Court Judge 3% of prosecutors and 2% of deputy prosecutors are women. Women constitute 18% of court clerks.

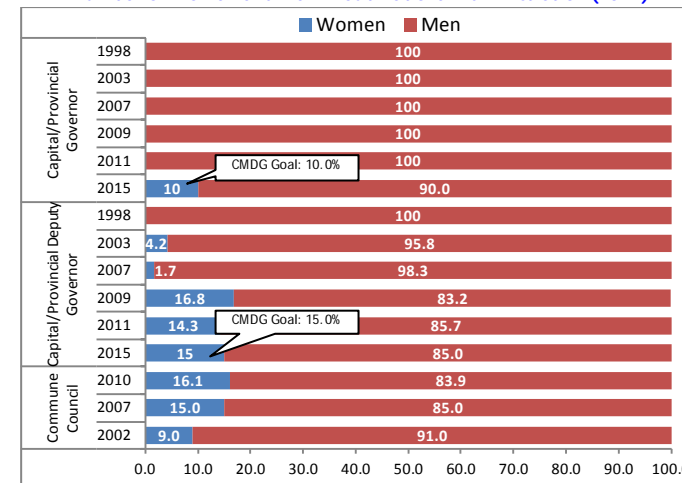
Women in the Judiciary 2010



Source: Statistics List of the Ministry of Justice (MoJ) 2010.

The proportion of women in the provincial government is low. There have been no female governors from 1998 until present, and only 14.3% of deputy governors in 2011 were women.

Number of Women and Men in Sub-national Administration (2011)



Source: State Secretariat of Public Civil Service (As of 31 December, 2011)

Women in Provincial, Municipal, District / Khan Councils 2009-2013

Sex	Members of Capital/Provincial Councils		Members of Municipal, District and Khan Councils	
	Members	Percentage	Members	Percentage
Women	10	37 per	13	359 per
Men	90	337 per	87	2,498 per
Total	374		2,861	

Source: Ministry of Interior 2012 (MOI)

Prepared by:

Department of Planning and Statistics,  
Ministry of Women's Affairs.  
Tel: (855) 23 991 072 / 426 358  
Fax: (855) 23 426 358  
Japan International Cooperation Agency

Supported by:



## Key Gender Statistics in Cambodia (As of January 2012)

This leaflet illustrates important statistical information about women and men in Cambodia. The information is mainly based on national census, surveys and data from publications released by the Royal Government, international organizations and NGOs.

### Population / Household

The population of Cambodia distributed by sex and the overall sex ratio according to the four sources is shown in the table below. As observed the sex ratio (men in relation to women) changed from 93% in Census 1998 to 95% in Census 2008 as well as in the CSES 2009 but still remained below the point of balance of the sexes. That means that there are more women than men in the Cambodia population than in common.

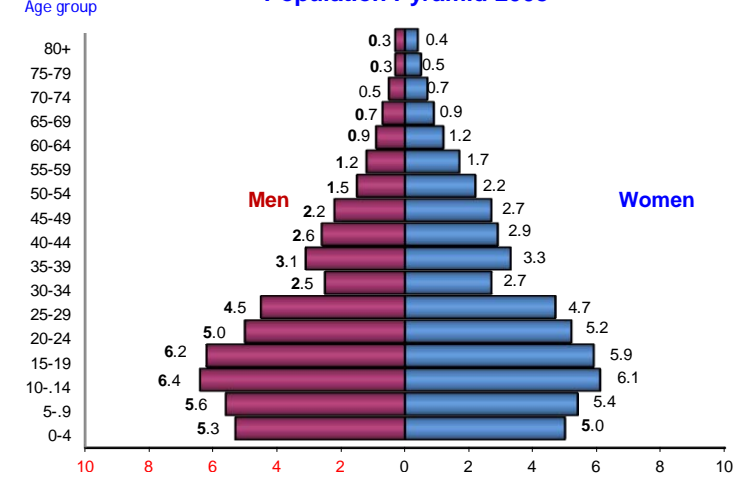
Estimated Population by Sex

Sex	(In Thousands)			
	Census 1998	CSES 2004	Census 2008	CSES 2009
Women	5,926	6,530	6,879	7,155
Men	5,511	6,126	6,516	6,811
Both Sexes	11,437	12,657	13,395	13,966
Sex Ratio	93.0	93.8	94.7	95.2

Source: Cambodia Socio Economic Survey 2009

In 2008, young people (age 0-14) make up almost 34% of the total population. The 30-34 age groups are significantly smaller, a steep decline due to the combined result of low fertility and high mortality during the Khmer rouge period and preceding 30 years of civil war.

Population Pyramid 2008



Source: General Population Census of Cambodia 2008

Approximately 21.6% of all households are headed by women in 2009. Women headed households with no adult male and several dependents are identified as the poorest of the poor.

Number and Percentage of household headed by sex 1998 and 2009

Year	Head of Household		Number of Household
	Women (%)	Men (%)	
1998	25.7	74.3	2,162,086
2008	25.6	74.4	2,817,637
2009	21.6	78.4	2,938,000

Source: General Population Census of Cambodia 2008 and Cambodia Socio Economic Survey 2009

In 2009 the majority of the Cambodia populations were married/living together. Though more men lived as never been married compared to women also a larger part of men than women lived as married/living together.

Marital status of population aged 15 and over by sex

Marital Status	(Percentage)		
	Women	Men	Both sexes
Never married	28.7	35.8	32.1
Married/living together	54.9	61.0	57.8
Widowed	13.5	2.4	8.2
Divorced/Separated	2.9	0.8	1.9

Source: Cambodia Socio Economic Survey 2009

## Education

In 2009 the literacy rate was higher for men than for women in all geographical domains. The largest differences between women and men can be seen in other urban and other rural areas with ten percentage points or more. In Phnom Penh the difference was less than ten percentage points.

Compared to CSES 2004 the literacy rate has increased for both women and men. The rates for women have increased more than for men in all geographical domains, which mean that the gap between women and men has decreased.

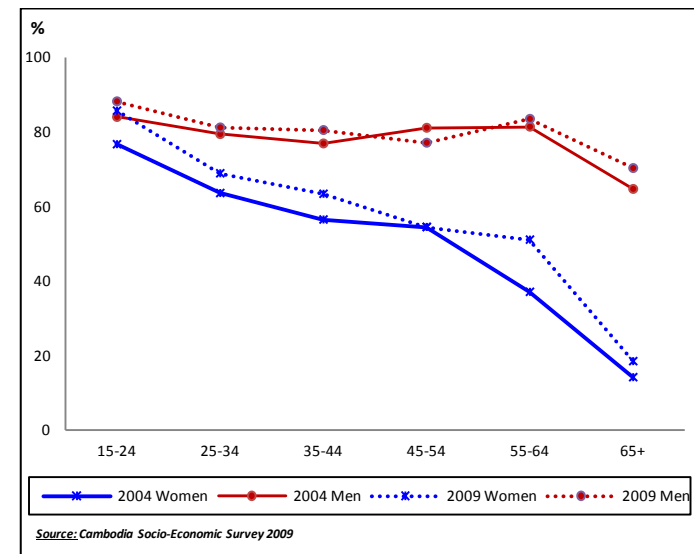
Literacy among population 7 years and over by sex and geographical domains, 2004 and 2009

Area	2004			2009		
	Women	Men	Total	Women	Men	Total
Cambodia	60.5	74.8	67.4	66.8	79.1	72.7
Phnom Penh	86.4	95.4	90.7	89.3	96.2	92.5
Other Urban	71.9	82.5	77.0	79.9	89.6	84.6
Other Rural	55.6	71.1	63.0	62.0	75.7	68.6

Source: Cambodia Socio Economic Survey 2009

There is large difference between women and men in all age groups from 25 years and over, especially in the highest age group. Rate of women in the age group of 15-24 years in 2009 is almost the same as men. The adult literacy rate for women in all age groups has increased between 2004 and 2009 and the gap between women and men has decreased in all age groups except among the oldest.

Adult Literacy Rate by Age group and Sex, Cambodia 2008 and 2009



Source: Cambodia Socio-Economic Survey 2009

School enrolment rates for girls and boys are similar in primary level both in urban and rural areas. There is a gap between urban and rural at higher levels of education and enrolment rates in rural areas are especially low.

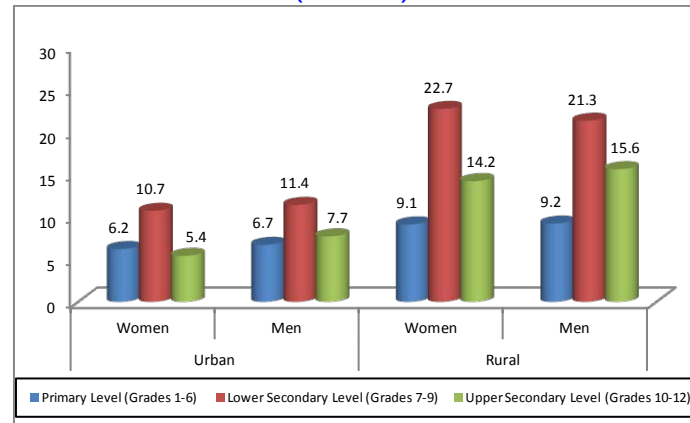
Net Enrolment Ratio by sex, area and level of education in 2011 (%)

Area	Primary		Lower Secondary		Upper Secondary	
	Girls	Boys	Women	Men	Women	Men
Cambodia	94.6	95.8	37.2	33.0	20.5	20.6
Urban Area	92.3	95.3	50.7	51.9	45.2	48.4
Rural Area	95.1	95.9	34.3	29.4	15.0	14.9

Source: Education Statistics and Indicators 2010/2011, MoEYS

The dropout rate for both girls and boys in rural areas is higher than in urban areas.

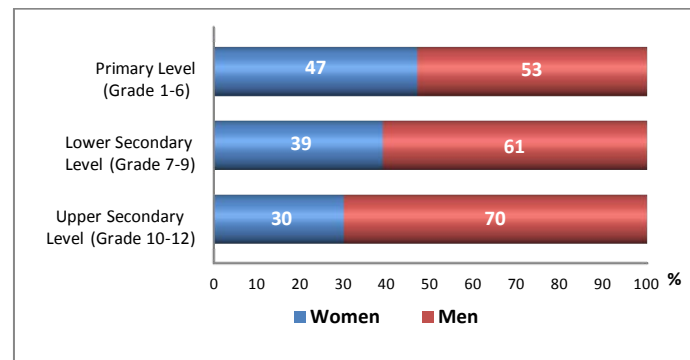
Percentage of Dropout for Women and Men by Level of Education (2009/2010)



Source: Education Statistics and Indicators 2010/2011, MoEYS

The proportion of female teachers is lower than male for all educational levels and especially low at higher levels of education. However, the proportions of female teachers are significantly increased in 2010.

Percentage of Teaching Staffs by Sex and Level of Education (2009/2010)



Source: Education Statistics and Indicators 2008/2009, MoEYS

## Economy

The labour force participation rate is higher in rural areas than urban areas, for both women and men. Women in Phnom Penh as well as urban area have decreased their labour participation since 2004. In all area the labour force participation rate has increased as a whole. Also for men as a whole there was an increase between the years.

Labour force participation rate by sex and area 2004 and 2009

Area	2004			2009		
	Both Sexes	Women	Men	Both Sexes	Women	Men
Cambodia	82.2	77.5	87.4	84.4	80.4	88.8
Phnom Penh	68.6	63.0	75.1	68.7	61.5	77.2
Other Urban	78.5	75.3	82.1	77.2	72.7	82.1
Other Rural	84.7	80.0	90.1	87.7	84.3	91.3

Source: Cambodia Socio Economic Survey 2009

In general, for most of the employment rate in all sectors no or very small differences were measured between women and men from 2004 and 2009.

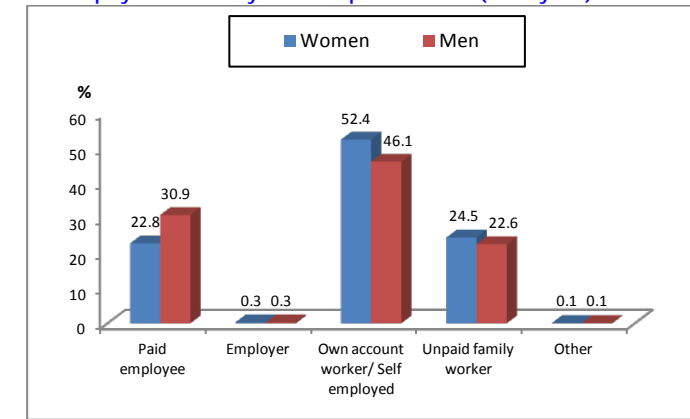
Employment Population 15-64 year by industrial sector (main occupation) and sex 2004 and 2009

Industrial Sector	2004		2009	
	Women	Men	Women	Men
Agriculture (Primary sector)	55.5	57.0	57.8	57.4
Industry (Secondary sector)	14.4	13.0	16.2	15.5
Services (Tertiary)	30.1	29.9	26.0	27.0

Source: Cambodia Socio Economic Survey 2009

In 2009 women engaged in unpaid family work and own account worker/self employed is more than men. Women's contribution in the informal sector is -excluded from national economic statistics.

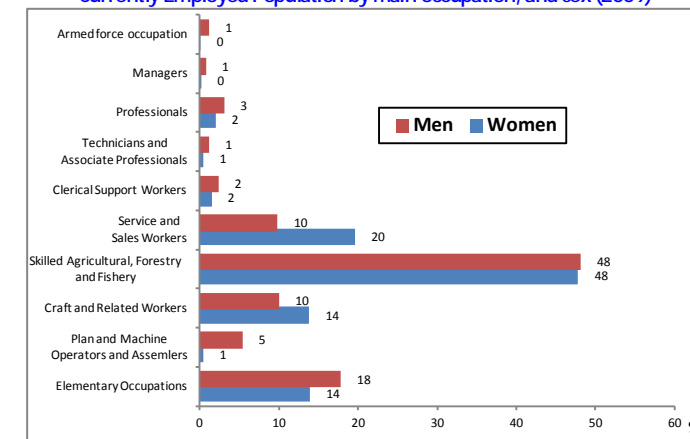
Employment Status by main occupation and Sex (15-64 years) in 2009



Source: Cambodia Socio Economic Survey 2009

Generally almost half of the population in Cambodia were employed as skilled agricultural, forestry and fishery workers. This held for both women and men. Barely twice as many women than men were employed as service and sales workers while almost 30 percent more men than women were employed in elementary occupations. All together two thirds of the Cambodian populations were employed in these three occupation categories.

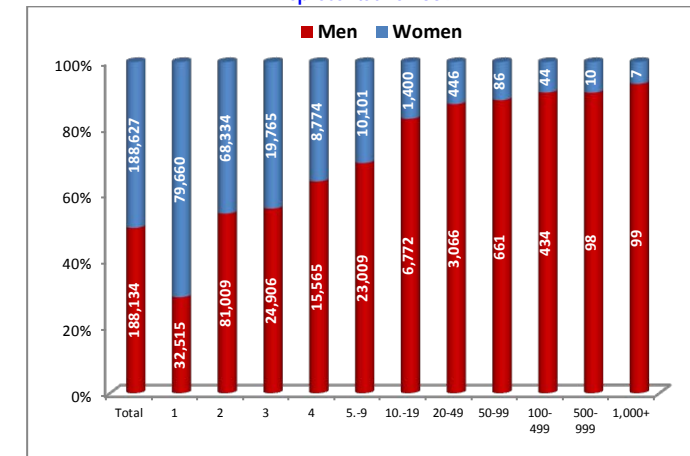
Currently Employed Population by main occupation, and sex (2009)



Source: Cambodia Socio Economic Survey 2009

Women and men are overall equally represented in establishments. However, women make up over 70% of the small size establishments (with one person engaged), whereas men make up over 50% in establishments with two or more persons engaged. Men are more involved in large scale establishment than women.

Percentage of Establishments by Size of Persons Engaged and Sex of Representative 2009



Source: National-Wide Establishment Listing of Cambodia 2009

## Health

The average life expectancy for women is five years higher than men (2011). Life expectancy for both women and men decreased between 2008 and 2011, and is projected to grow by an additional three years by 2011.

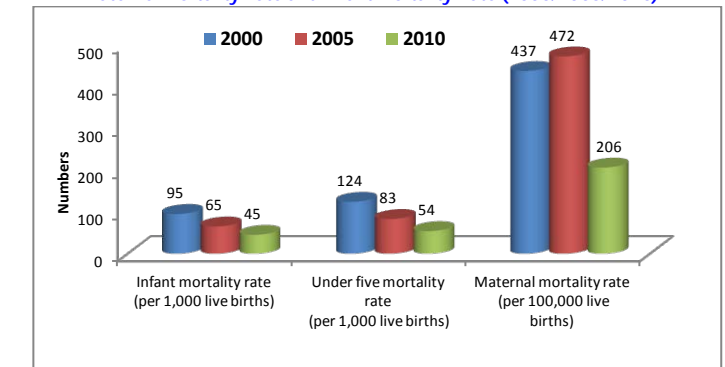
Life expectancy population projection between women and men (1998/2004/2008/2011)

Sex	Year			
	1998	2004	2008	2011
Women	55.79	64.48	67.48	65.13
Men	51.82	60.11	63.11	60.31

Source: Demographic Estimates and Revised Population Projection 2011

In 2010 the maternal mortality rate in Cambodia have shown fairly good decreased from 472 in 2005 to 206 in 2010 (per 100,000 live births). The infant mortality rate decreased from 95 in 2000 to 45 in 2010 (per 1,000 live births) and under five mortality rate also decreased to 54 in 2010.

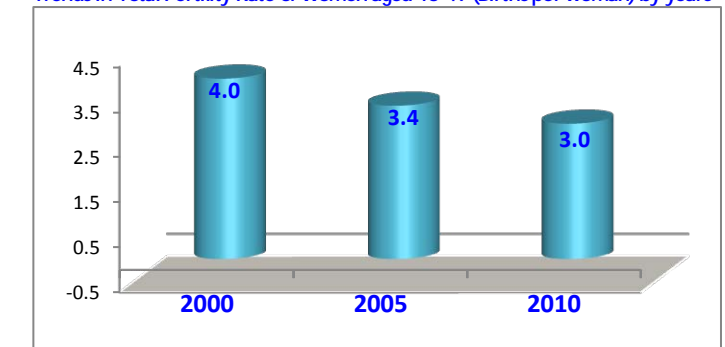
Maternal Mortality Rate and Infant Mortality Rate (2000/2005/2010)



Source: Cambodia Demographic and Health Survey 2000, 2005 and 2010.

Fertility in Cambodia has declined over the past ten years. Currently, women in Cambodia have an average of 3.0 children, a decrease of one child since 2000.

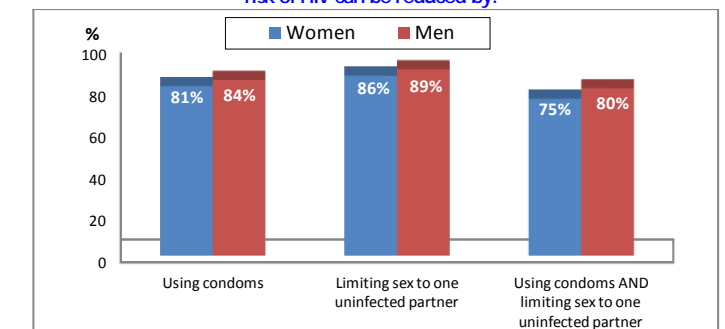
Trends in Total Fertility Rate of Women aged 15-49 (Births per woman) by years



Source: Cambodia Demographic and Health Survey 2000, 2005 and 2010.

According to the 2010 CDHS, almost all Cambodian adults have heard of HIV and AIDS, but knowledge of HIV prevention measures is slightly lower. 75% of women and 80% of men know that the risk of getting HIV can be reduced by using condoms and limiting sex to one faithful, uninfected partner. Prevention knowledge is higher among those with higher levels of education.

Knowledge of HIV Prevention by Sex in 2010, percent who know that the risk of HIV can be reduced by:



Source: Cambodia Demographic and Health Survey 2010.

