

Grand Egyptian Museum (GEM) project

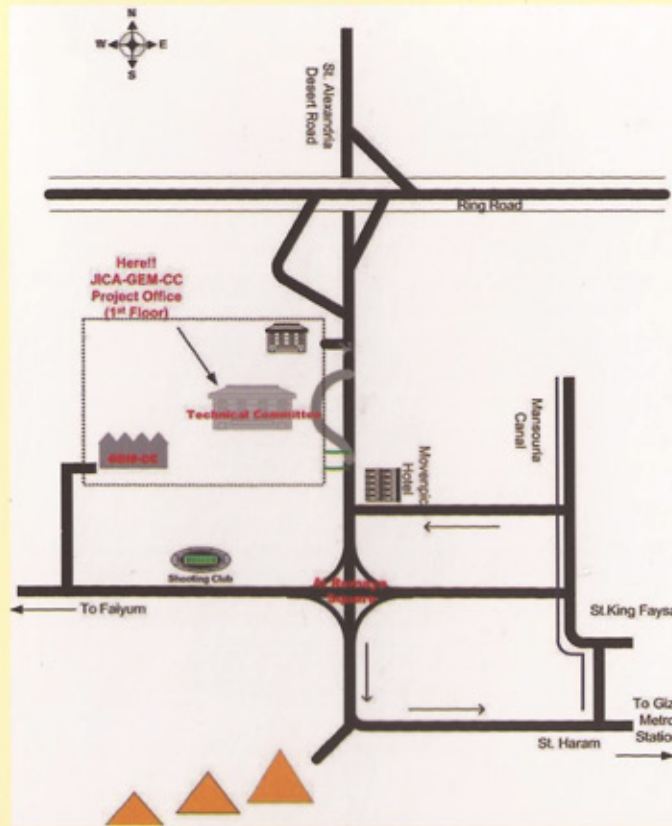


At the outskirts of the Giza Plateau, the **Grand Egyptian Museum** has been planned to house treasures of ancient Egypt.

A modern, landscape-conscious architecture was selected through an international competition for the important cultural heritage of humankind, such as the famous collection of **Tutankhamun**. The new museum will provide a variety of experiences and services to the visitors; encountering with ancient Egyptian culture and technologies through its vast collection, educational service for children and adults, a research facility, an easy-access for the disabled and great views of the Giza pyramids from the gardens. The museum project is currently underway aiming to open it in 2015.

JICA (Japan International Cooperation Agency) the executing agency of the Japan's Official Development Assistant (ODA), provides 34.8 billion yen (about US\$ 300 million) official development loan to the Egyptian government. It covers a great part of the cost of building construction, exhibition and interior design, landscape design, and the ICT development.

A museum collection is in need of care at all times, both when they are on display and stored in a storeroom. A **conservation center of the Grand Egyptian Museum (GEM-CC)** was constructed in 2009 by the Egyptian government with the latest equipment to ensure preservation of the GEM collection. In future, GEM-CC is expected to contribute to preservation of cultural heritage of the country and become the center of excellence for conservation in the North African and Middle Eastern regions as well as for research on ancient Egyptian materials and technologies.



Visit our websites

for more updated information about us!

JICA official website

(Available English and Japanese)

<http://www.jica.go.jp/project/english/egypt/0702247/news/index.html>

JICA-GEM-CC Project website

(Available English, Arabic and Japanese)

<http://www.jicagem.com/>



Grand Egyptian Museum Conservation Center Project



Introduction to the JICA-GEM-CC Project

JICA has decided to support preservation of cultural heritage of Egypt in conjunction with the cooperation for the GEM construction. Cultural Heritage forms a part of the Egyptian identity and an important tourism resource for the society.

The support to GEM-CC is through **capacity development and technical cooperation for the GEM-CC, provided with an assistance of the National Research Institute for Cultural Properties, Tokyo (NRICPT).**

The project has begun a preparation phase (Phase I) in 2008. Until today, we have provided training courses, supported to establish a database for the GEM artifacts through an **Archaeological Database Department (ADD)** and planned the **Conservation Capacity Development Program** for the Phase II.



Capacity Development of Conservation

JICA supports capacity development of **140 Egyptian experts of GEM-CC** (conservators, scientists and Egyptologists) through training courses given by Japanese and international experts.

The Capacity Development Program aims to:

- Enhance knowledge and skills of conservation practice with an emphasis on **preventive conservation** and application of **science**
- Support GEM-CC to be an **international leading institution of conservation** practice and research in the North African and Middle Eastern region

From 2008, we have given courses on: "Health and Safety", "Integrated Pest Management (IPM)", "Packing and Transportation", "Dealing with artifacts", "Photographic Documentation", "Conservation Management", "Textile Conservation", "Metal Conservation", "Paper Conservation", "Conservation and Analytical Equipment" and "Microbiology" as well as establishing an environment monitoring group with the Egyptian and Japanese experts.

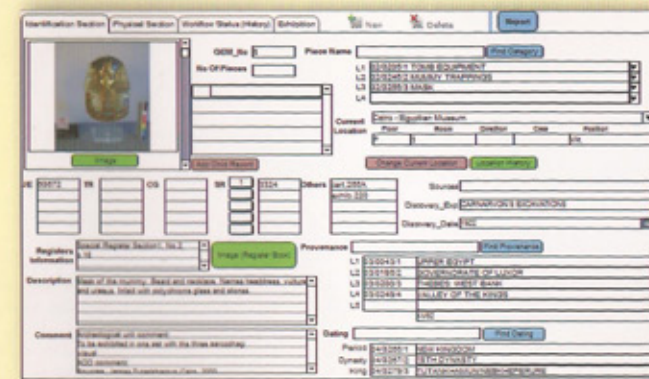
Upon the beginning of the project Phase II in July 2011, more comprehensive and full scale training program is planned to be provided.



Archaeological Database Department (ADD)

An **accurate database** of artifacts is a prerequisite for a modern museum that houses a large number of collections. A good exhibition design, efficient artifact transportation and collection management are only possible on the basis of accurate information of each artifact.

The GEM team began to build an artifact database. However, some problems have been found in the data, such as misinformation and duplication etc. Under such situation, JICA started supporting the GEM by organizing and establishing an Archeological Database Department (ADD) **to revise the database with more accuracy** as well as **to develop institutional and human resource capacities among Egyptian Egyptologists for efficient and effective work ethics, processes and management.**



ADD team, comprised of **Egyptian Egyptologists and Japanese IT and archeology experts**, has established a workflow and management system of their work. Their painstaking work starts from visiting museums and site storerooms where they identify; confirming the registration numbers and sizes, and photographing them according to the newly established ADD standards. After a site work, they carefully enter the collected information into the database.

The database information created by ADD helps the museum design planning as well as curators and conservators who pack and transfer artifacts to GEM-CC now. ADD is going to be handed over to the GEM in March 2012. The database developed by ADD is expected to be developed further by the **GEM Information Center (GEM-IC)** as a collection database of the museum in order of sustainable collection management.