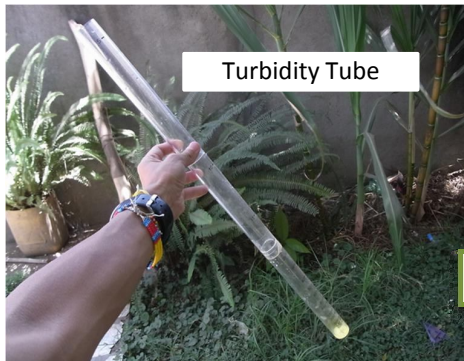


Turbidity Tube for Turbidity

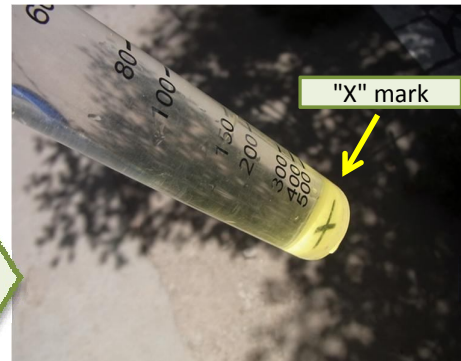
Measurement of Turbidity [NTU] using Turbidity tube.

①



Set up (connect) the Turbidity tube.

②



"X" mark is on the bottom of the Turbidity tube.

③



See "X" mark on the bottom from upper side of tube.

④



You can see "X" mark.

⑤



Add sample water from upper side little by little.

⑥



Fade the "X" mark gradually. Add more sample water until disappearance of "X" mark.

⑦



Completely disappear the "X" mark, then, stop the adding of sample.

⑧

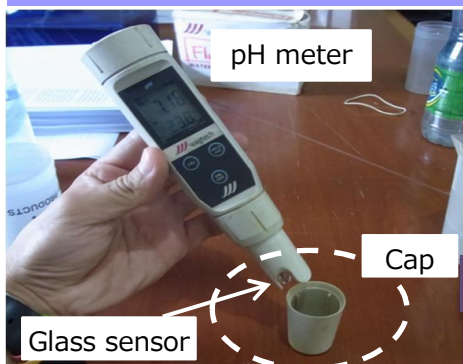


Check the volume = Turbidity value [NTU] on the Turbidity tube.

pH and Temperature

Measurement of pH and Temperature using pH meter

① Measurement



Take the cap off the pH meter.
*Do not touch glass sensor.

②



Add sample water until 2~3 cm from bottom.

③



Push "ON/OFF" button.

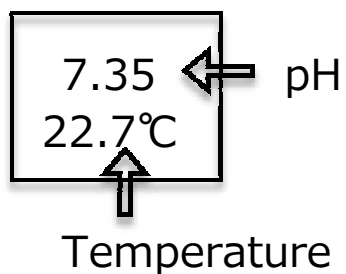
④



Dip pH meter into sample water.
Then, wait 1~2 minutes at least until stability.

⑤

Monitor



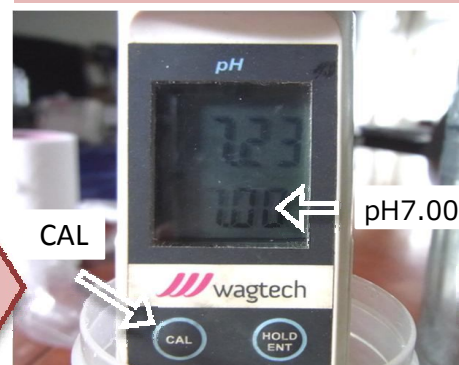
After stability of value, read the pH and Temperature.
For example...
- pH : 7.35
- Temperature: 22.7°C

① Calibration



You sometimes conduct calibration for adjustment of correct pH value.
Prepare "pH7 buffer solution" (pH standard solution).

②



Add "pH7 buffer solution" until 2~3 cm from bottom.
Then, dip pH meter into the solution.
Push "CAL" button.

③



After stability of pH value, push "HOLD/ENT" button.
And then, push "CAL" button for return to measurement mode.