

Figure B.13 - Example of landslide potential map based on geological and micro-topography data in north of kabupaten Jember



Figure B.14 - Example of point data from conversion result from slope data



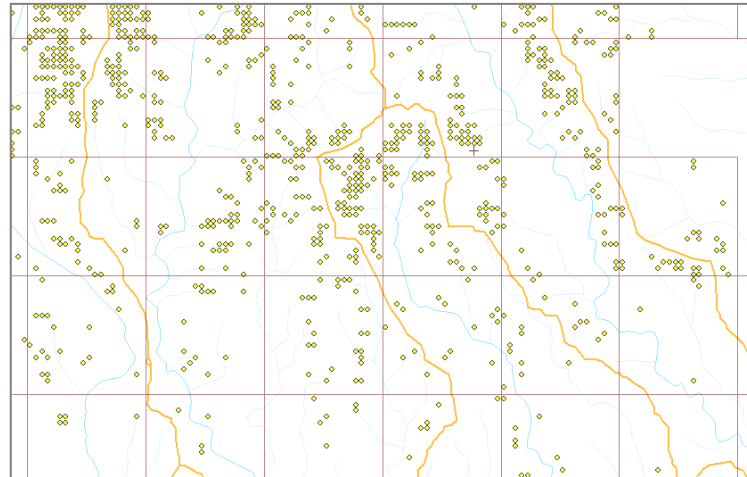


Figure B.15 - Example of plotting the landslide potential points

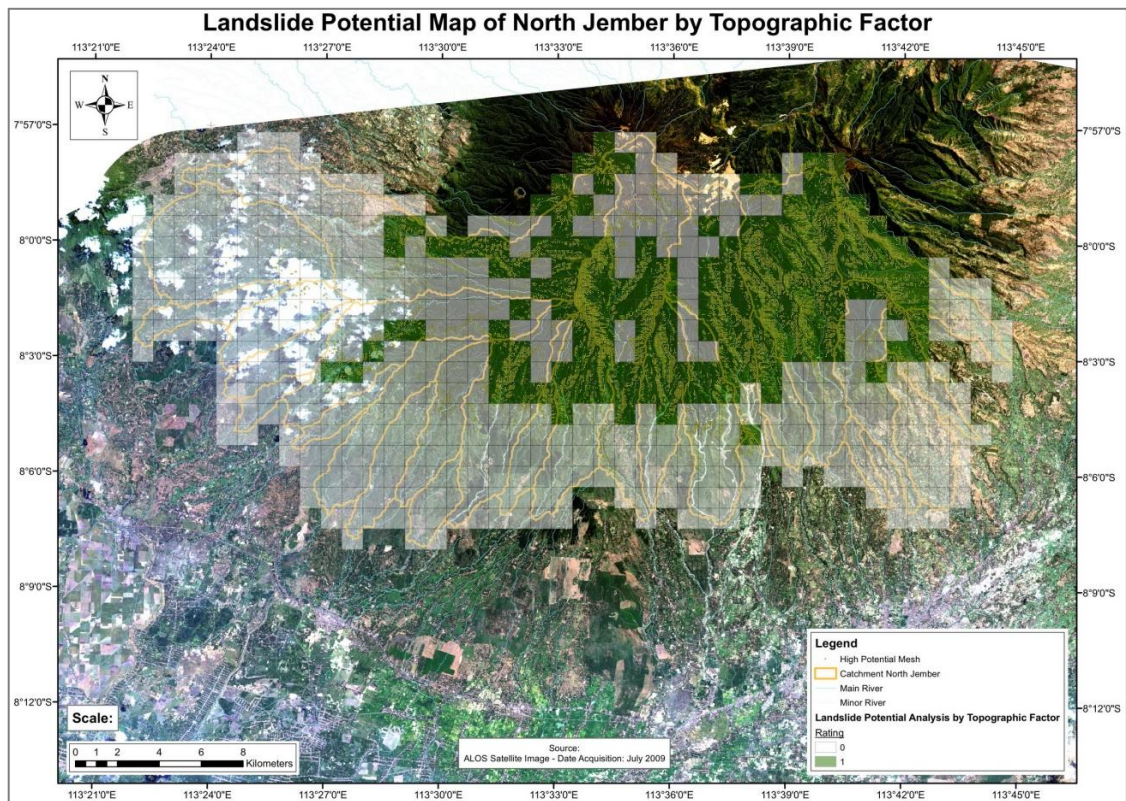


Figure B.16 - Example of landslide potential map based on topographic factor in north area of kabupaten Jember



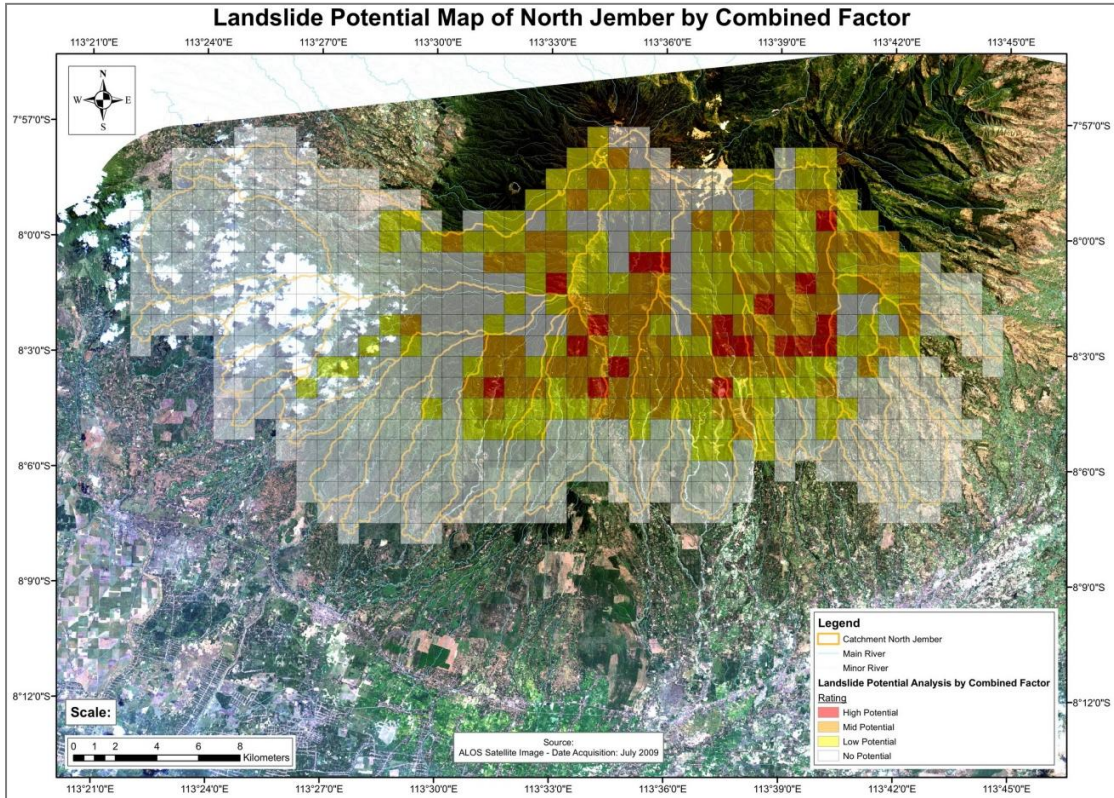


Figure B.17 - Example of landslide potential map based on combine factor in north area of kabupaten Jember

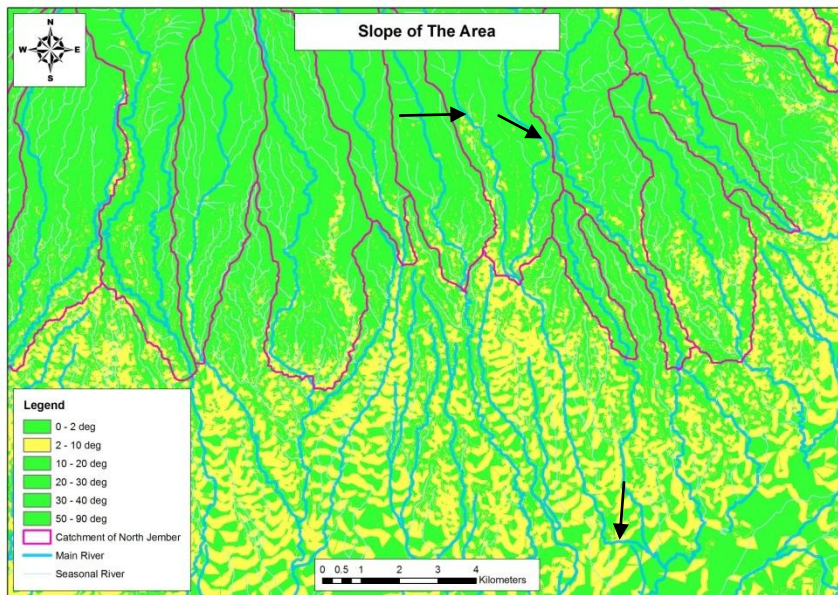


Figure B.18 - How to select main river and make limitation based on range of slope



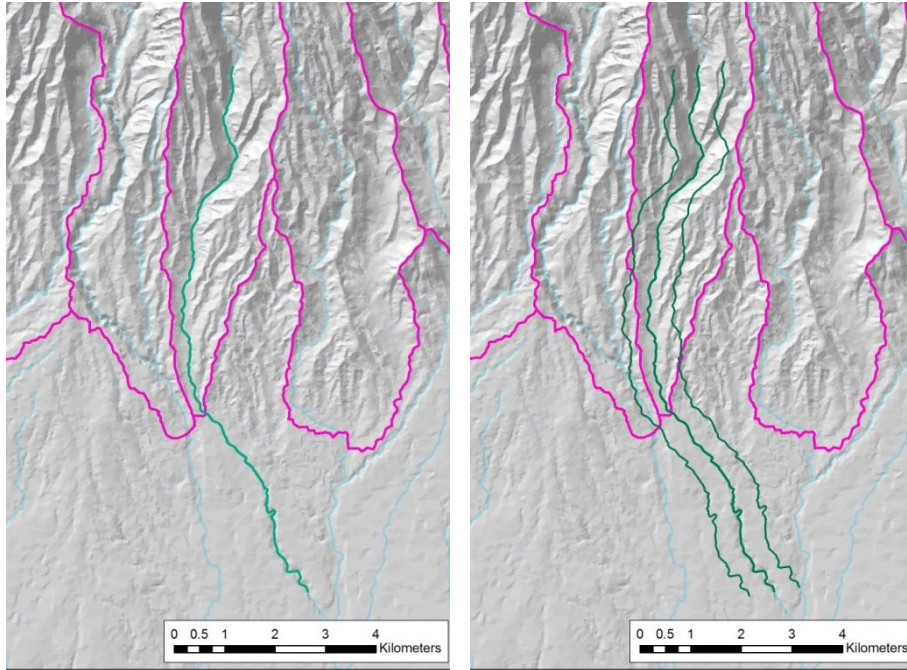


Figure B.19 - How to make river feature offset

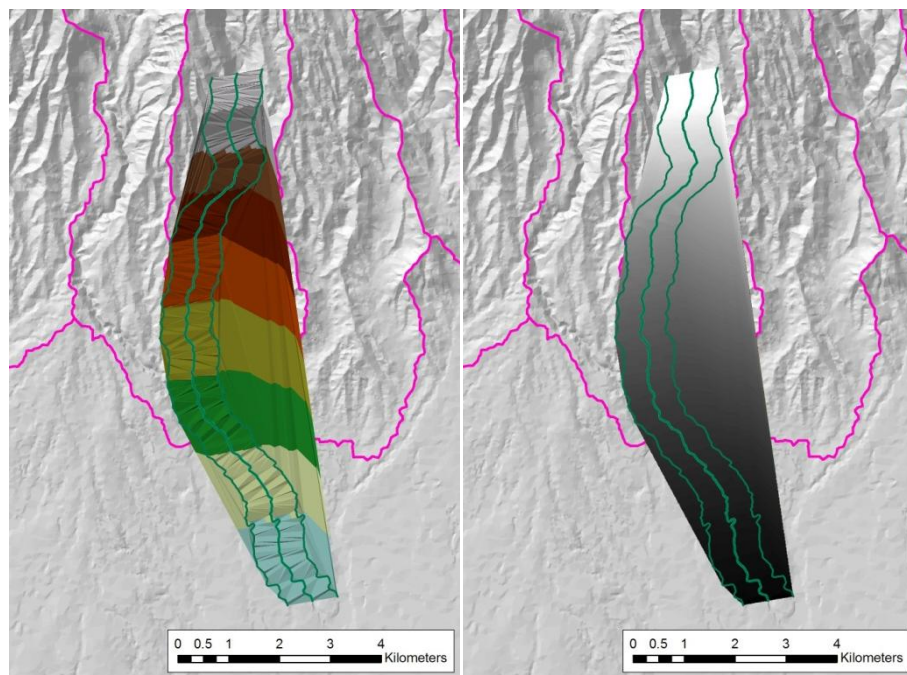


Figure B.20 - Making DEM and TIN from river feature offset

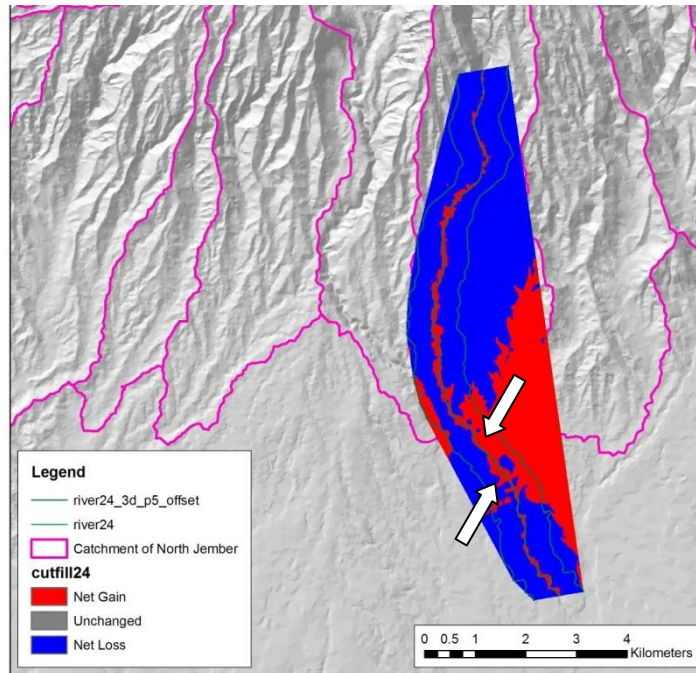


Figure B.21 - Make a cut and fill calculation of the two volumes

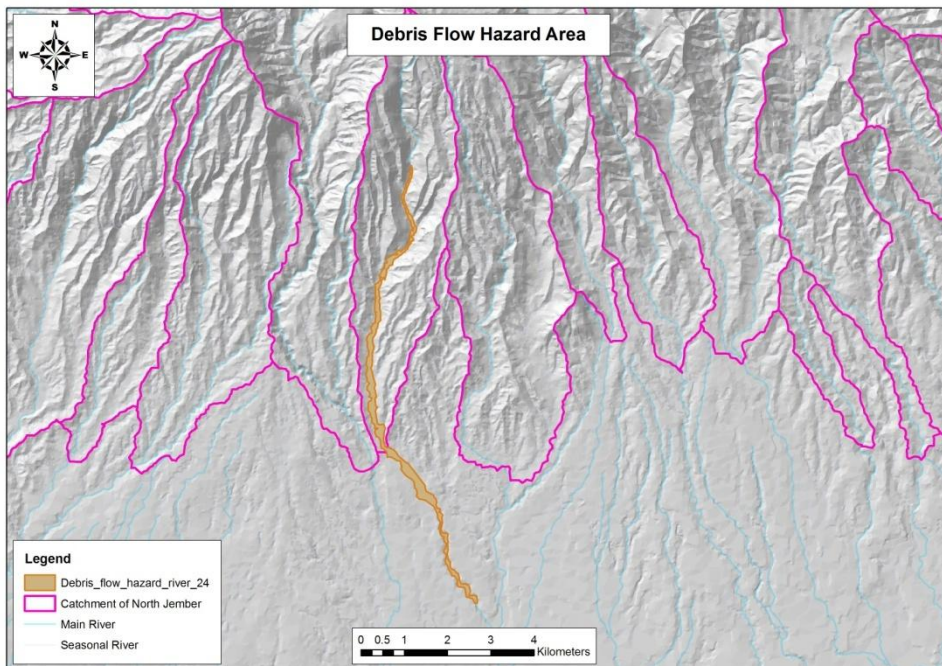


Figure B.22 - Example results of banjir bandang hazard area



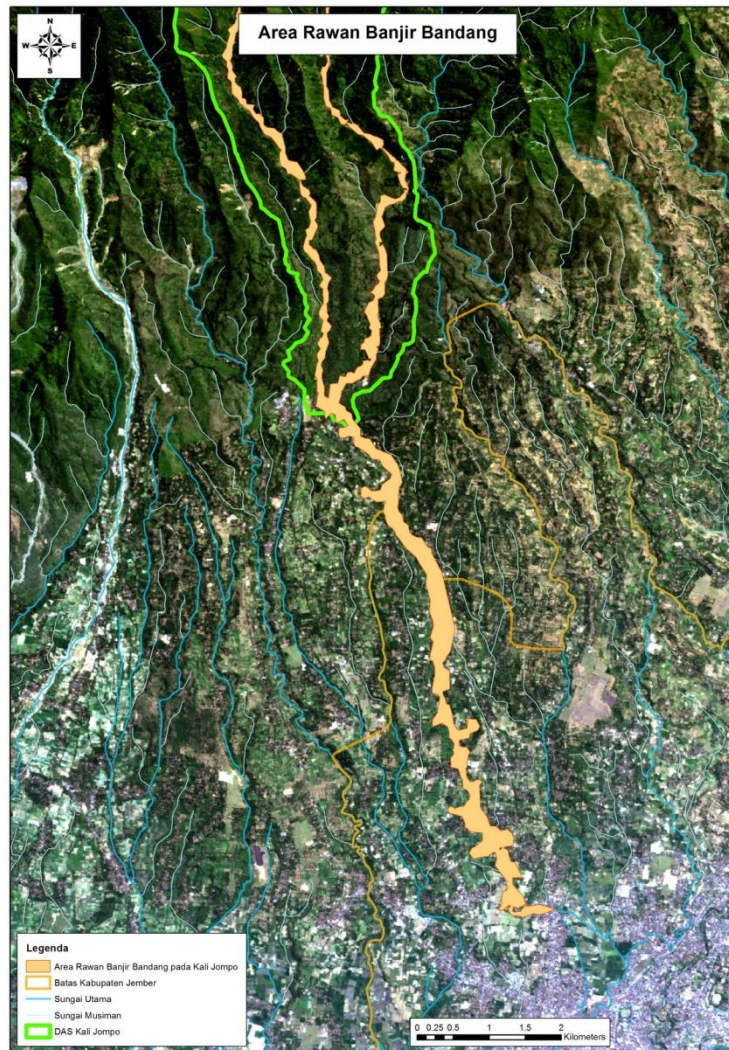


Figure B.23 – Example map of banjir bandang hazard area on kali Jompo catchment area using topographic data