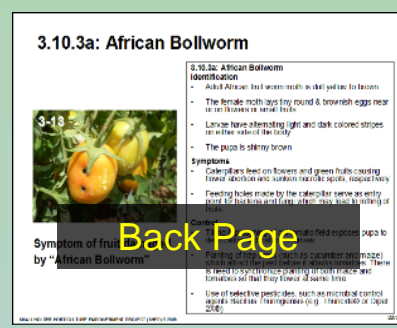


KAMISHIBAI at your hand.

In SHEP PLUS, we have been using Kamishibai, which literally means "picture play" in Japanese, for agriculture extension activities. It is specially prepared, laminated for in-field activities, and printed back and forth. Front Page has title and photo/diagram so that the farmers can see it clearly, and back page has same photo/diagram as front page together with notes for the trainer.

To spread this tool even further, we decided to bring KAMISHIBAI online. Now you can get them at below link in the form of PDF.

<https://www.jica.go.jp/project/english/kenya/015/materials/index.html>



I'm using Kamishibai even to other groups besides the project model groups. Because of this we can interact well with farmers. Now I frequently call them and feel like a part of the group.



Mr. Mungai Mwaura,
Group Facilitator, Ichagaki
Ward, Murang'a County



Utilizing Kamishibai to train farmers.

Kamishibai builds competence and confidence in the trainer. It also enhances clear understanding by farmers (trainees). You are welcome to use these visually attractive and easy-to-understand extension Materials. -----Mr. Calistus Efukho, SHEP PLUS

