

Forest Cover and Socio Economic Survey in XiengNgun District

PAREDD project plans to conduct field study for the impact of the PAREDD Approach in XGN after 2 year's implementation of several mitigation activities such as type1, type2 and type3 activity since 2012.



(2011 survey by PAREDD and consultant team)

This is successive survey of Socio-Economic Study that had been conducted in 2011 before actual input of the PAREDD Approach started. We are going to measure the impact of the PAREDD Approach on socio economic condition as well as forest cover and land use in the area by making a comparative review of information and data of 2011 and 2013.

In this regard, PAREDD would like to request all members/residents in XGN site to support our study so as to clarify the effect of our effort on forest and natural resources.

The impact study consists of "socio-economic part" and "forest cover and land use change part". It would be started by interviews and on-the-ground research on December 2013.

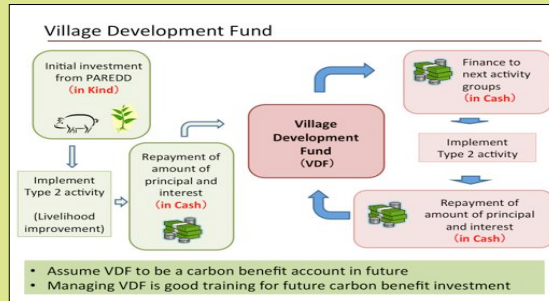
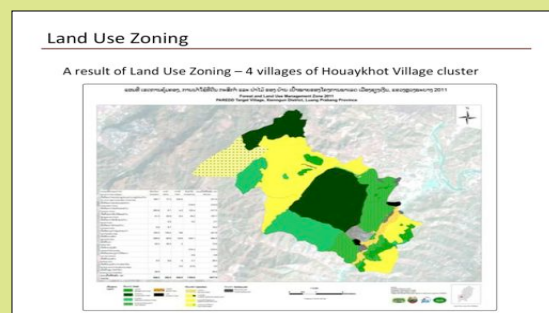
Joint Coordinating Committee Meeting (JCC) & Direction of the last year

In August 2014 PAREDD will accomplish its activities. On 23 October of this year in Vientiane, "The 6th Joint Coordination Committee (JCC) meeting of PAREDD" was held to talk on the result of previous year, the plan of coming year and after the project.

Under PAREDD approach, each PAREDD target village has tackled on protecting forest with its own initiative. The activities are showing good results step by step. For example 1) villagers' participatory organization (LFMC) was established, 2) Land Use Zoning was done for proper land use, 3) Activities, such as livelihood improvement, have launched, including veterinary system, 4) Village Development Fund was established for sustainable fund management.

The important is to continue each activity sustainably under Land Use Zoning and Village Development Fund. So toward the end of the project, PAREDD will strengthen this mechanism more.

In addition, PAREDD will be completed to transfer skill of PAREDD approach management to PAFO and DAFO staff, so that they can manage and extend PAREDD



PAREDD

Bulletin of October 2013 - 18th edition



The Participatory Land and Forest Management Project for Reducing Deforestation



P.O.Box: 841
 LuangPrabang Province
 Lao PDR
 Tel: 071-254378
 Fax: 071-254379
 E-mail: paredd.lpb@gmail.com

The importance of Land And Forest Management Committee towards the management of PAREDD project activities in Xiengngeun district LuangPrabang province

The Land and Forest Management Committee (LFMC) established in the 4 target villages of Xiengngeun district are monitoring the 3 main activities which implemented by villagers. LFMC plays focal role in the communication between the villages and village with district. Besides, LFMC also oversees Village Development Fund, Village Veterinary Service Fund, and assists villagers in finding solution for the problems that happened within the activity groups. In addition, the committee also monitor the plantations and patrol the village boundary areas on a regular basis, as well as organizing monthly meeting in order to report the progress of activities to district and PAREDD project.

The monitoring of agricultural land and forest use in the target villages of Phonxay district

The agricultural land and forest use zoning is very important for the farming activities of villagers. After completing it, it is necessary to monitor and instruct villagers how to implement the activities in each zone. Activities to be



implemented by the

project team and district project counterparts are as follows:

1. Reconfirm the boundaries for villagers to understand where are the agricultural and forest land areas.
2. When it comes near to the farming season, the project team needs to confirm one more time and monitor the villagers when they slash and burn the vegetation in order to see whether villagers conduct their farming activities within the designated area or not, as well as propagate one more time the regulations regarding the management and use of agricultural and forest land, which formulated by themselves.



Comments of the village head of Paktho towards the implementation of PAREDD activities

Sabaidee, my name is Somphone, I am Paktho village head, Xiengngeun district, LuangPrabang province. I am very pleased with PAREDD project which has supported my village in terms of funds, equipment and technical knowledge for implementing 3 main activities, they are:

1. Planting trees for reforestation, domestication of non-timber forest products, planting fruit trees for the school.
2. Livelihood improvement for villagers.
3. Building and renovating village infrastructures

The implementation of these activities brought very good results in many areas. Villagers could generate income, some changed to have more stable job especially raising livestock. At the same time, villagers could reduce shifting cultivation in the conservation area of "PhouChomNgae" for many hectares. Besides, Village Development Fund which belonged to the village was also established that can help villagers to step by step improve their livelihoods.

In closing, on behalf of all villagers, I would like to thank the project and its staff who have greatly supported villagers to find stable and permanent job.

