

PAREDD Approach

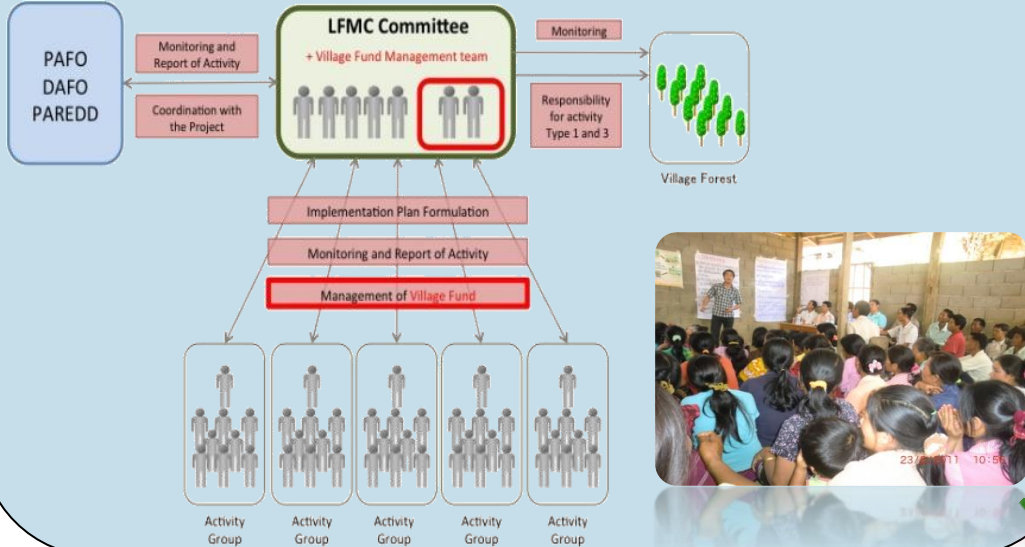


is a mitigation measure for reducing deforestation and degradation at village / village cluster

Communality

■ **LFMC**
Land and Forest Management Committee

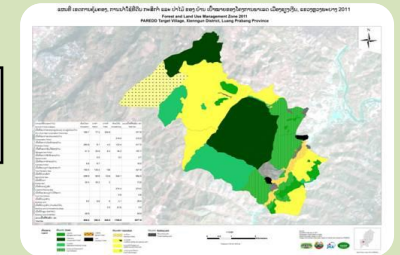
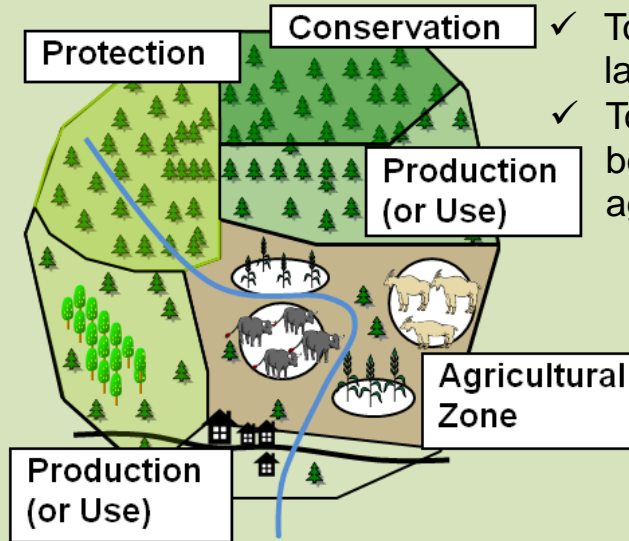
✓ LFMC is expected to play central role at village level



Stability

■ **Land Use Zoning**

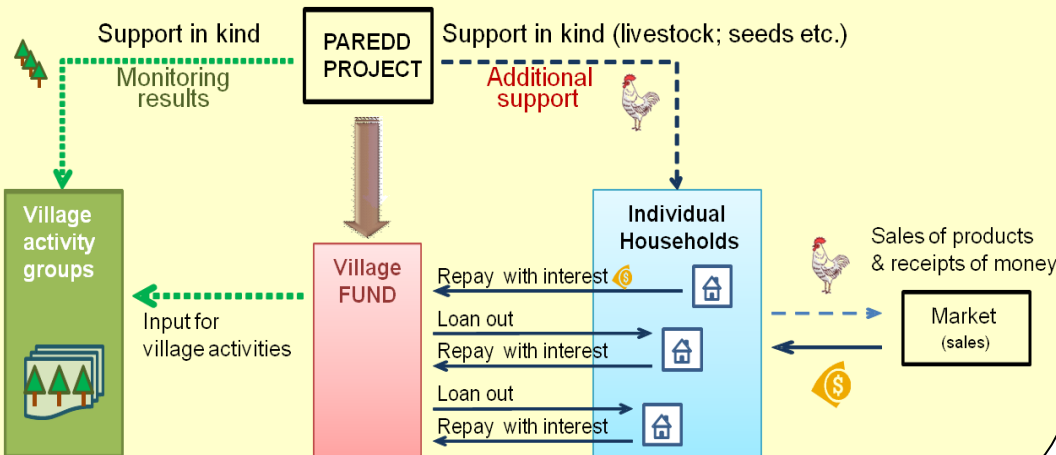
- ✓ To control excessive land use
- ✓ To attain the right balance between forest and agricultural land zone



Sustainability

■ **Fund Management**

✓ To use limited funding sustainably among villagers who interested in livelihoods improvement activities



Own Initiative

■ **Proceeded Activities**

- ✓ **Type1** - Community Natural Resources
Community activities for the conservation and management of community resources
- ✓ **Type2** - Livelihoods Improvement
Group-based or household-based activities for improving livelihoods and / or increasing production
- ✓ **Type3** - Community Facilities
Community development activities that can benefit the whole community

