

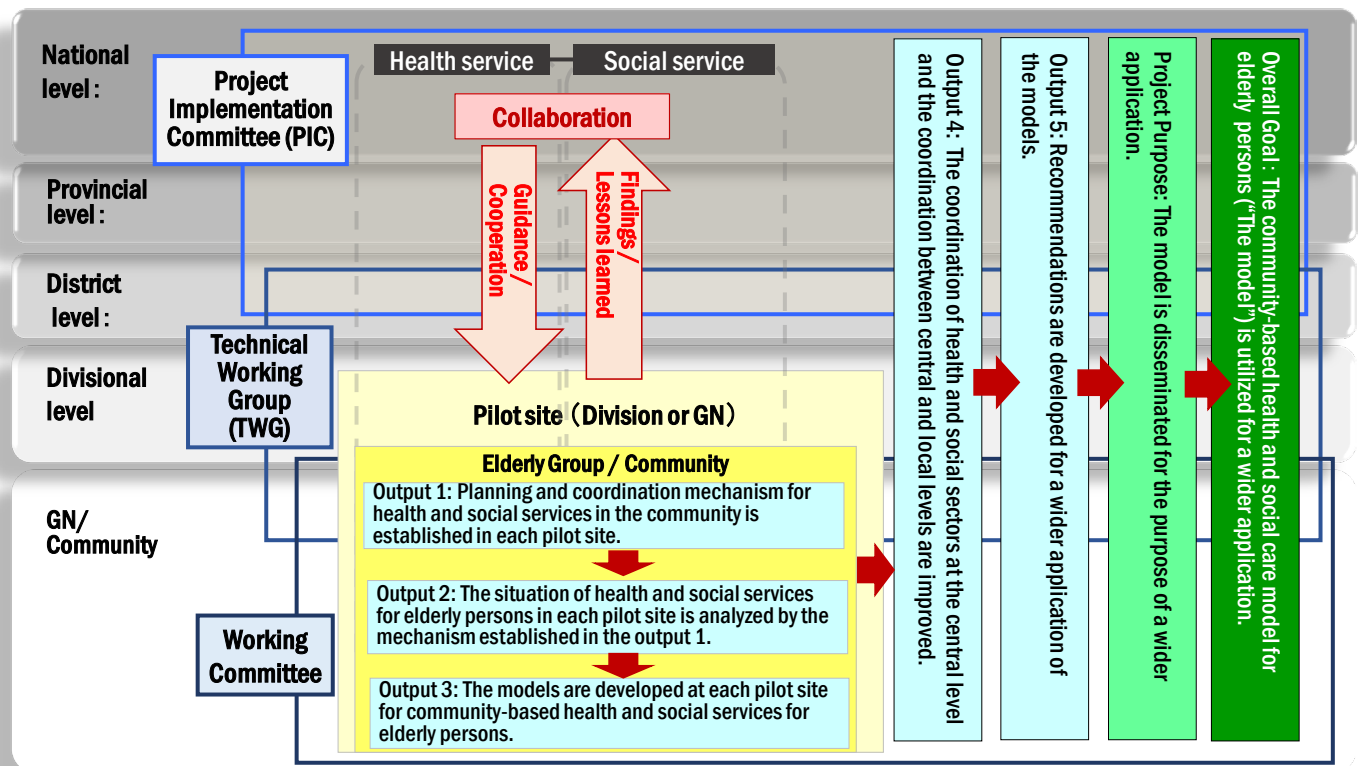
JICA Project for Capacity Enhancement of Elderly Service in the Community



Project framework

Major activities

1. To introduce coordination framework among health, social service, and other relevant stakeholders in national, regional and community level.
2. To Introduce community-integrated elderly care system models (the models) in community level in 3 pilot sites
3. To make documents, records and materials for expansion of the models to the other areas



Pilot sites

Colombo district:

- Kaduwela division (Athurugiriya)
- Padukka division

Badulla district:

- Kandaketiya division

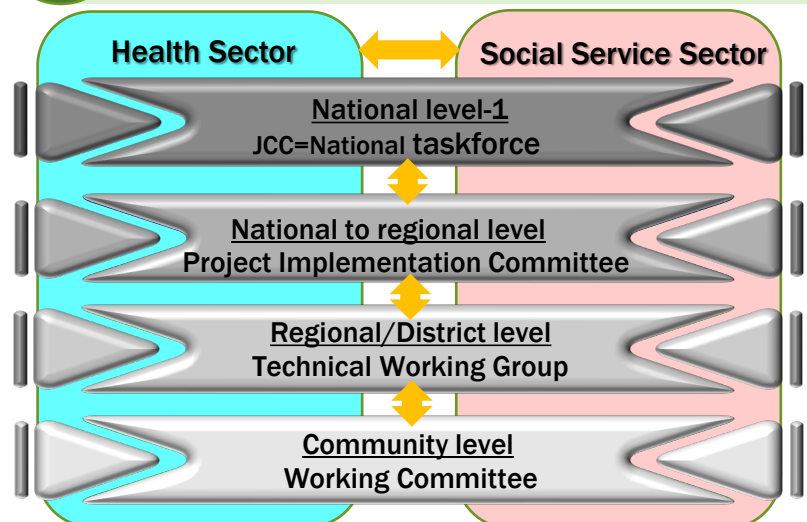


Project duration

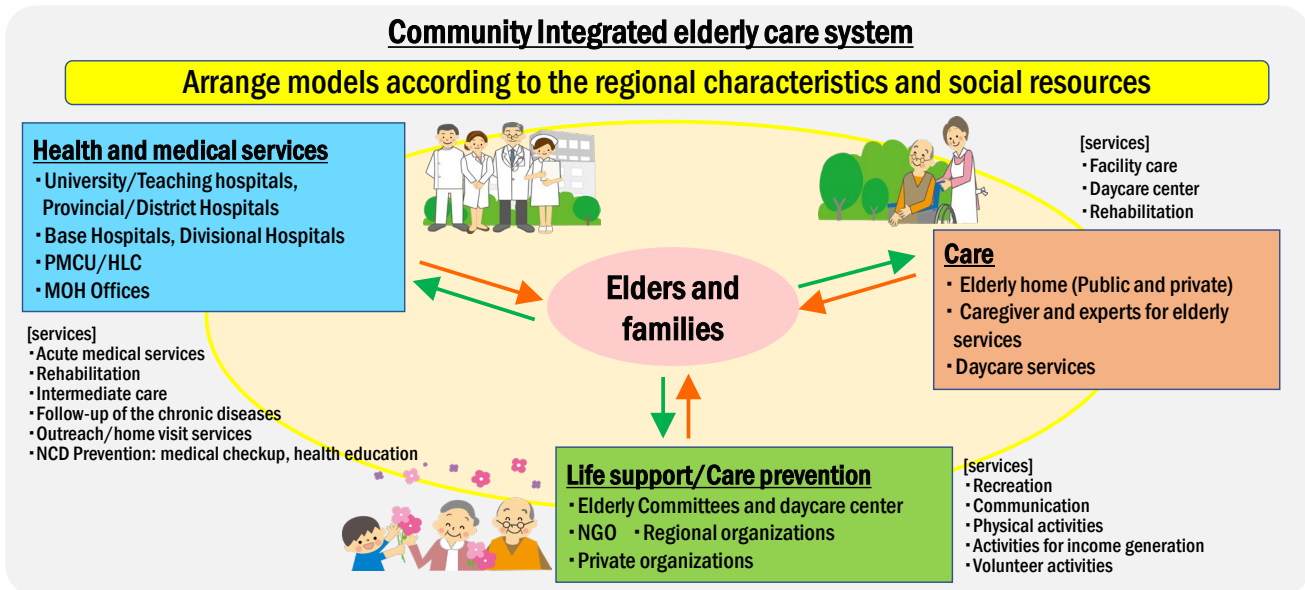
From Feb 2022 to Feb 2025

1

Introduce coordination framework among health and social services



Introducing “Community-based integrated elderly care model” in 3 pilot sites



Community-based integrated care model is system to provide comprehensive services for elderly people by coordination with social services, health and other sectors introduced in Japan..

Process to establish “Community-based integrated elderly care model using Japanese way

1 Establish platform of all the stakeholders



2 Introduce management system for elderly services (Shown the figure below)

- 1) Conduct needs assessment survey in a community
- 2) Check current resources
- 3) Hold community care meeting to identify needs and resources

1. Needs and resources identification

2. Making action plan with regional stakeholders

- 1) Make action plan for elderly services
- 2) Coordination with other plans if necessary (elderly, health, disabled, children, for intractable diseases)
- 3) Getting opinion from public

- 1) Evaluate results of implementation
How the situation is improved, if there are any new issues coming up,
- 2) Standardize effective methods
- 3) Share good results and lessons-learned

4. Evaluation and improvements

3. Implementation of action plan

- 1) Implementation of the action plans
 - Care services,
 - Coordination bet health and social services
 - Residences
 - Life-support and care prevention
 - Human resource developments
- 2) Monitoring of the action plan (internal and external)

Implementation Agency

Directorate of Youth, Elders and Disabled, Ministry of Health
National Secretariat for Elders (NSE). Ministry of Women, Child Affairs and Social Empowerment
Japan International Cooperation Agency (JICA)



Project office

National Secretariat for Elders (NSE),

Address: Block D, 2nd floor, Sethsripaya Stage (II), Battaramulla, Colombo

Email: jica.procees@gmail.com