



Return and Social Reintegration Handbook for Thai Victims of Trafficking in Persons



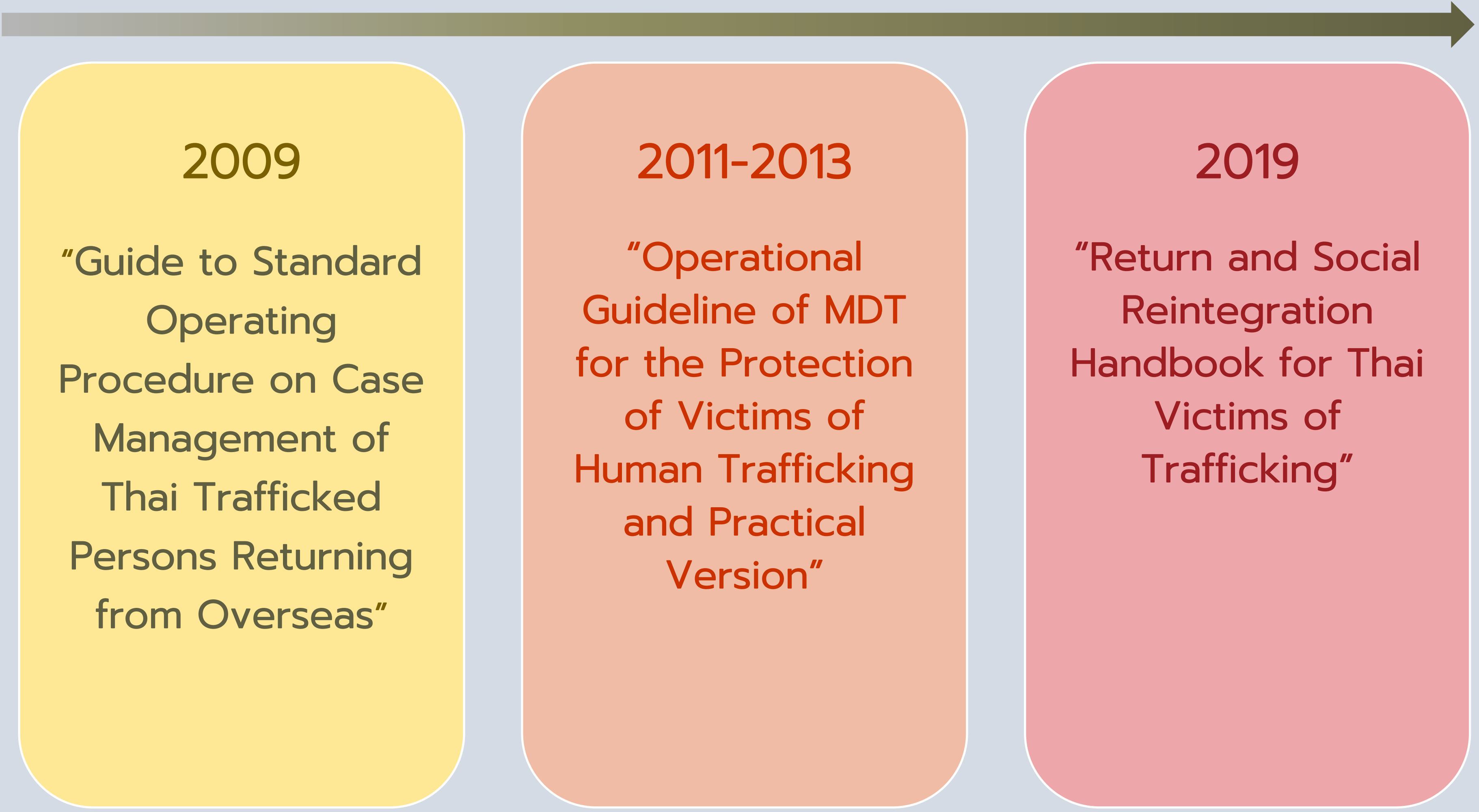
Background and Importance of Return and Social Reintegration

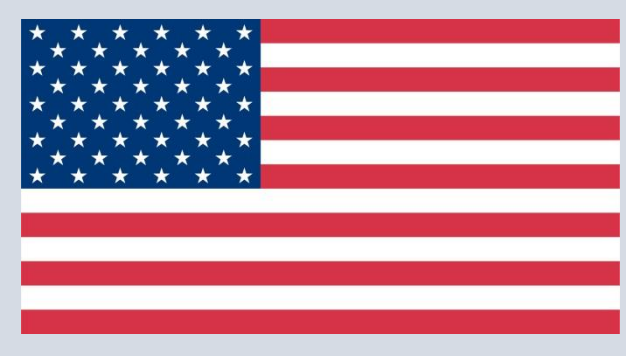


▪ **Providing Safe Return and Social Reintegration** for VOT and preventing them from being re-trafficked are the key to eradication of human trafficking

▪ **Ministry of Social Development and Human Security** continuously assists Thai VOT, including women and children forced into prostitution and men forced into labor trafficking, and works with related agencies through multi-disciplinary approach.

Handbooks on Return and Social Reintegration of Thai VOT





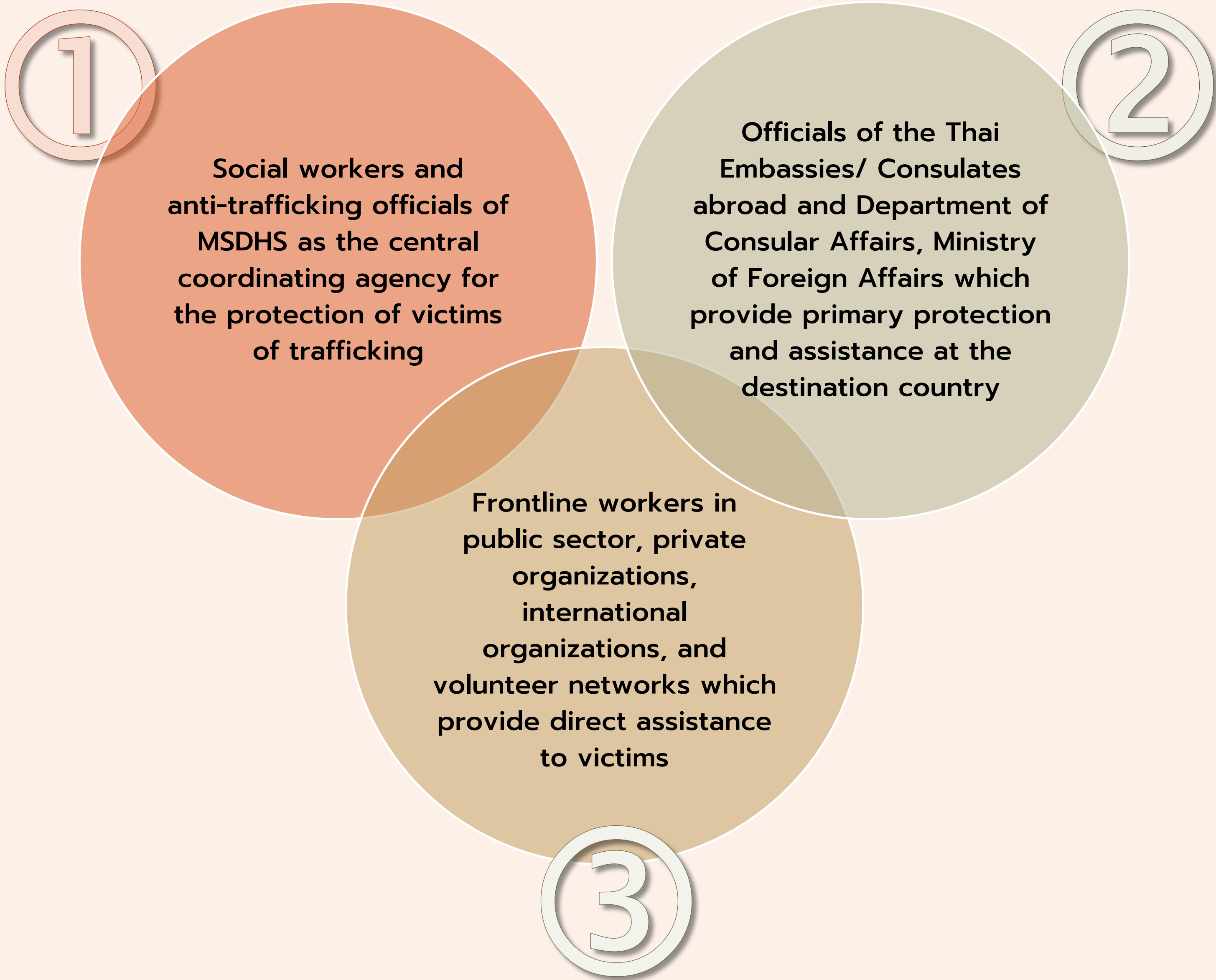
Return of Thai Victims of Trafficking

Objectives

To provide standard operating procedures for the return of Thai trafficked persons as a reference for the relevant agencies

To develop guidelines for Ministry of Social Development and Human Security and relevant agencies for the referral of Thai trafficked persons in line with international guidelines and standards

Target Users



Scope

- Introduction: background information, objectives, scope and target users of the handbook
 - Chapter 1: basic knowledge on the national/ regional referral mechanism

- Chapter 2 – 4: Guideline for officials of the Thai Embassies/ Consulates on assistance provision for VOT abroad
 - Chapter 4 – 6: Duties of MSDHS in case referral within Thailand

- Annex: Organizations providing assistance and services, and relevant forms

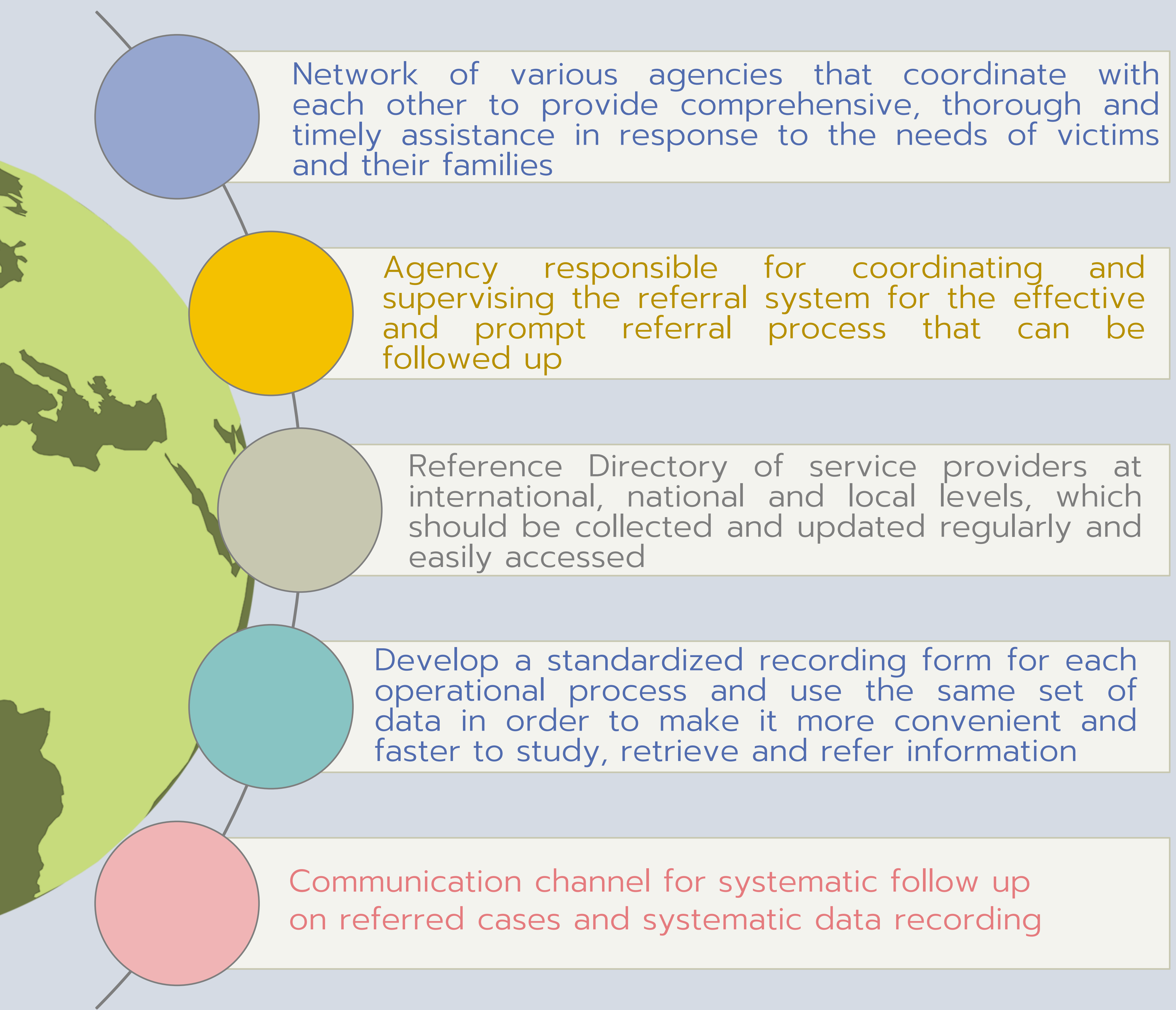


Definition of Return

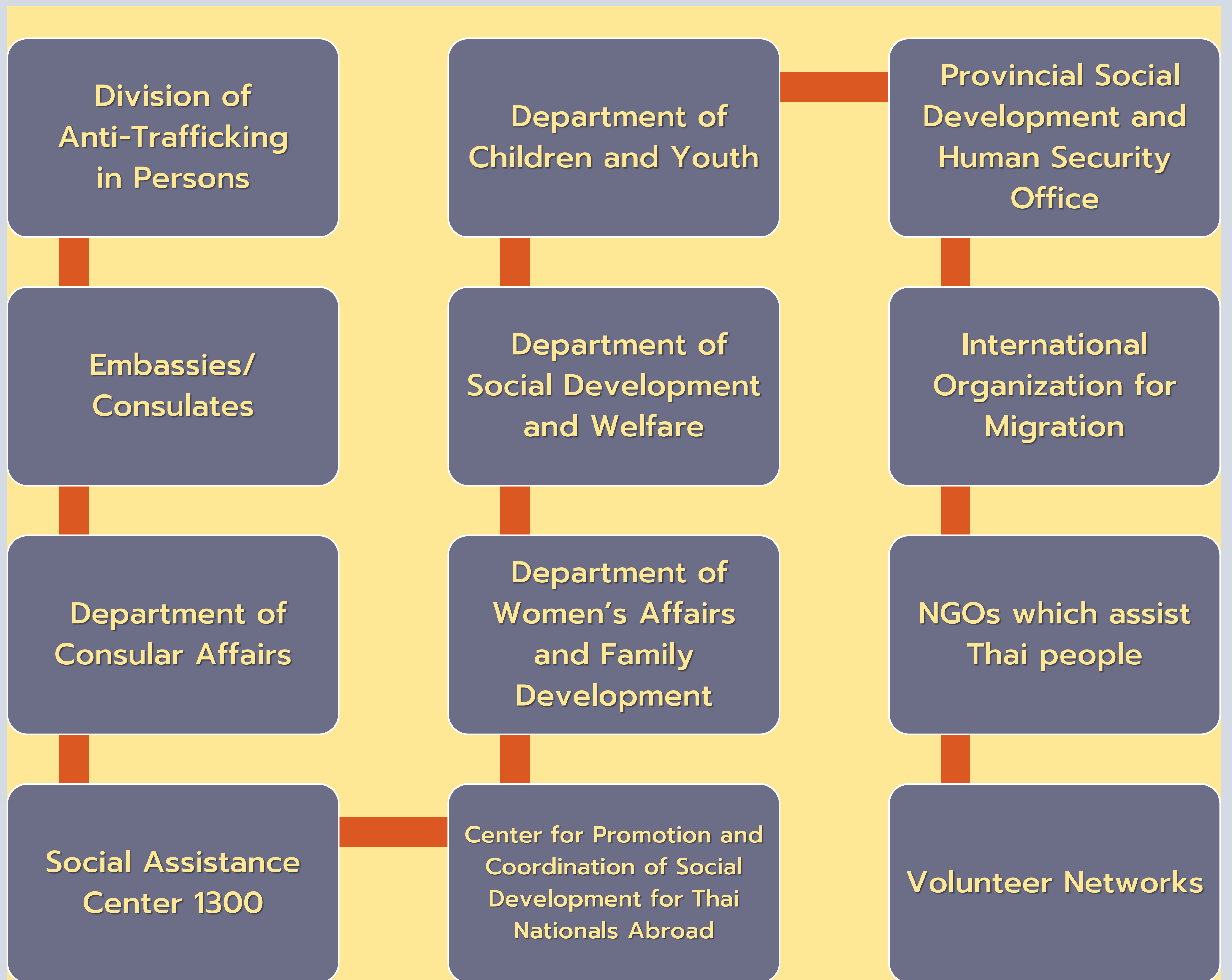


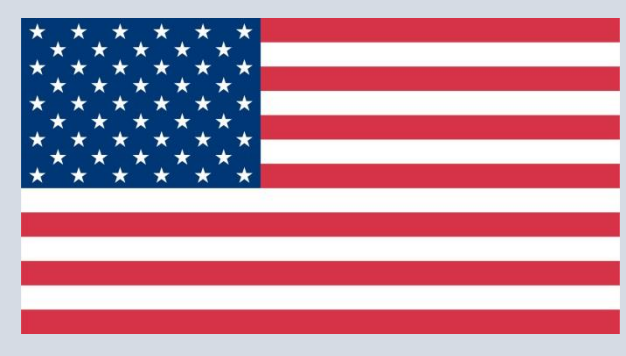
“ **Return** is a process of referring a person who is identified as a victim of trafficking from the destination country to his/her origin country. The return process can be initiated voluntarily, or by force with or without assistance ”

Key Components of The Return Process



Transnational, National and Local Referral Mechanism





Working Principles of Return and Social Reintegration

Rights-based Approach

Victim-centered Approach

Best Interest Determination

Trauma Informed Care

Consideration of Individual Needs

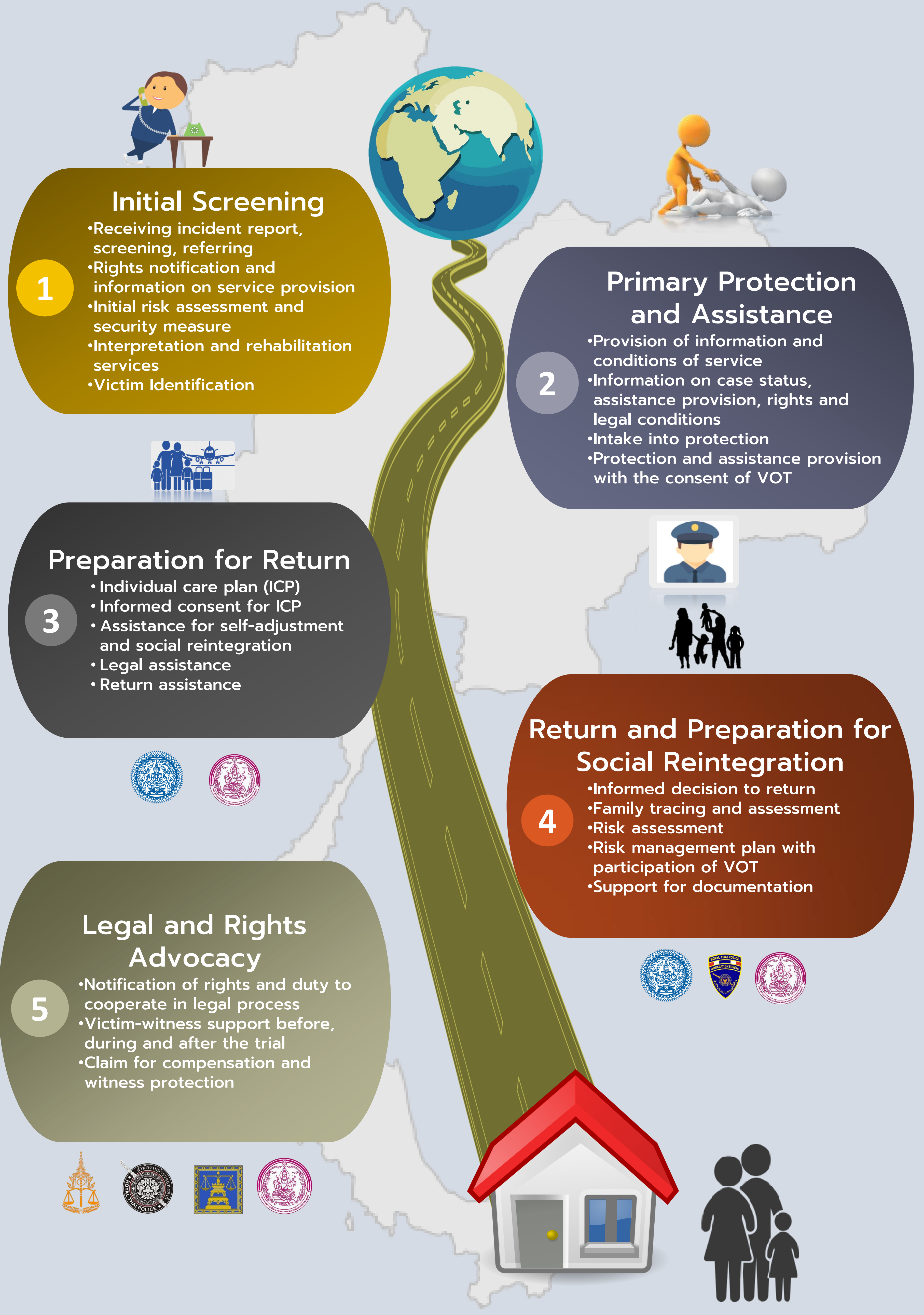
Survivor Empowerment

Safe Return

Being Sensitive to Children's Unique Needs

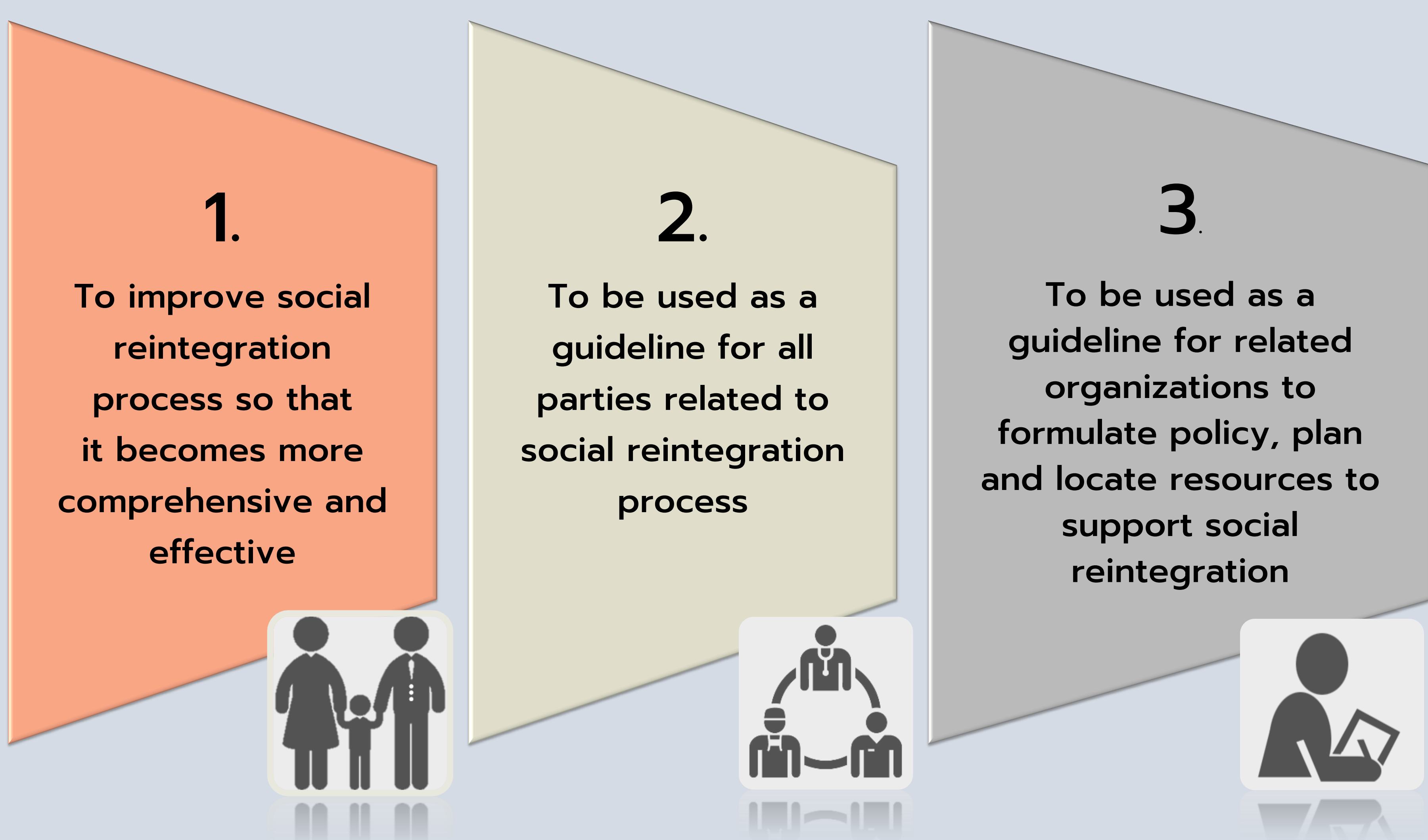
Gender Sensitivity

Return Process



Social Reintegration of Thai Victims of Trafficking in Persons

Objectives of the Handbook



Target Users



Content

Introduction

Chapter 1 *Basic Knowledge of Social Reintegration*

Definition and Framework of Social Reintegration Process	Who are the victims?	Mechanism of Coordination and Providing Assistance for Social Reintegration	Case Management for Social Reintegration	Operational Principle
--	----------------------	---	--	-----------------------

Chapter 2 *Social Reintegration Process*

Overall Social Reintegration Process	10 Steps of Social Reintegration Process
--------------------------------------	--

Chapter 3 *Available Services*

Legal Rights to Access Remedy	Education and Vocational Training Service	Empowerment (Economic, Vocational, Financial)	Fund and Financial Resources	Physical and Mental Health Service	Legal Assistance
-------------------------------	---	---	------------------------------	------------------------------------	------------------

Chapter 4 *Follow-up and Evaluation*

Social Reintegration Follow-up Process by Case Manager	Revision and Evaluation of Social Reintegration and Termination of Service	Process of Termination of Service	Data Collection and Making Reports on Result of Social Reintegration
--	--	-----------------------------------	--

Annex

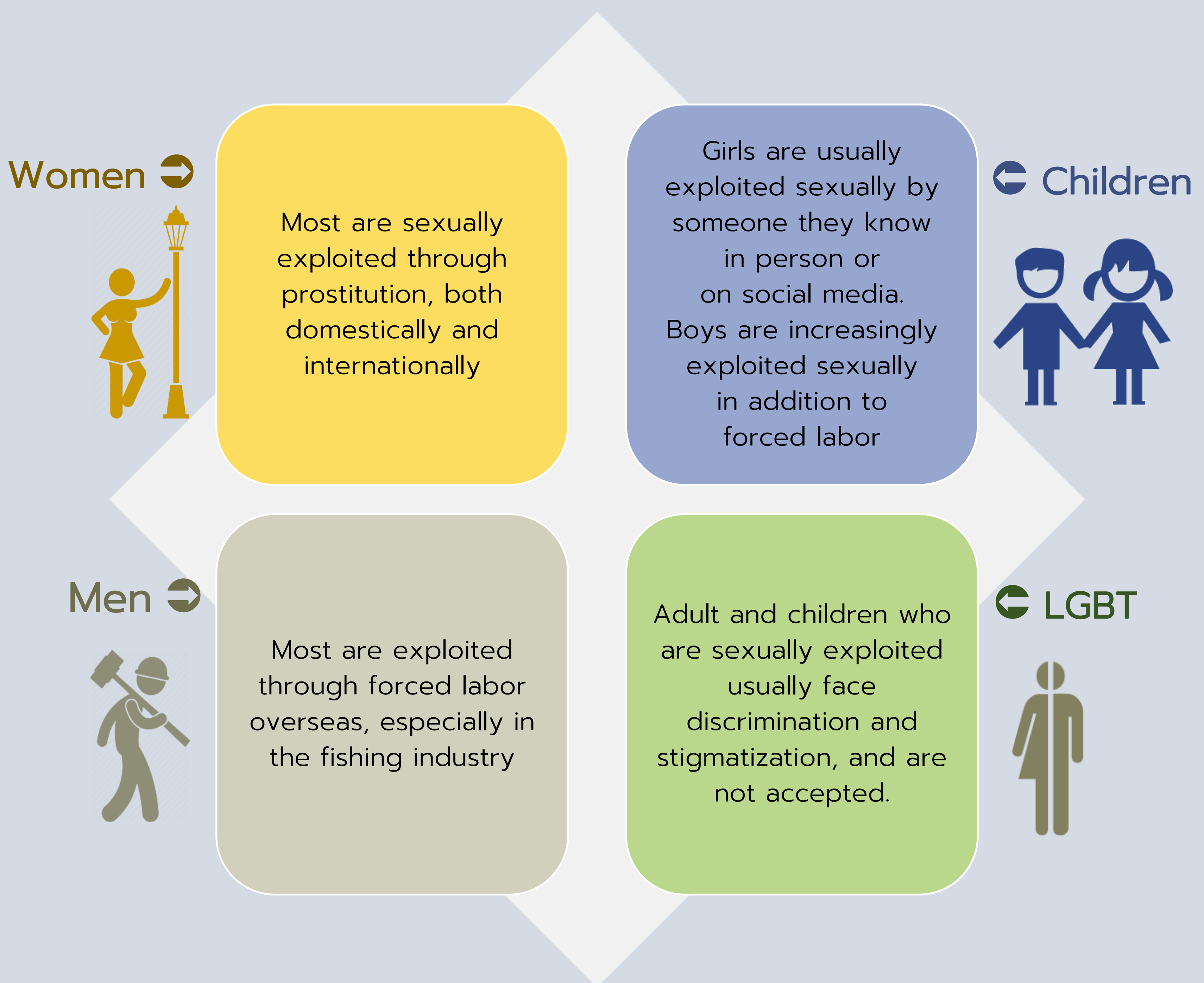
Definition of Social Reintegration

“ Social Reintegration is a process of assisting VOT to return to their family and original community, or to become a part of a new community. A unique plan of assistance shall be prepared for each individual case to repair his/her physical and mental health. VOT will be empowered so they can live independently with economic and social security and receives legal remedy and protection for sustainable social reintegration. Follow-up service will be conducted periodically to ensure that the VOT do not return to trafficking ring or is not re-trafficked.

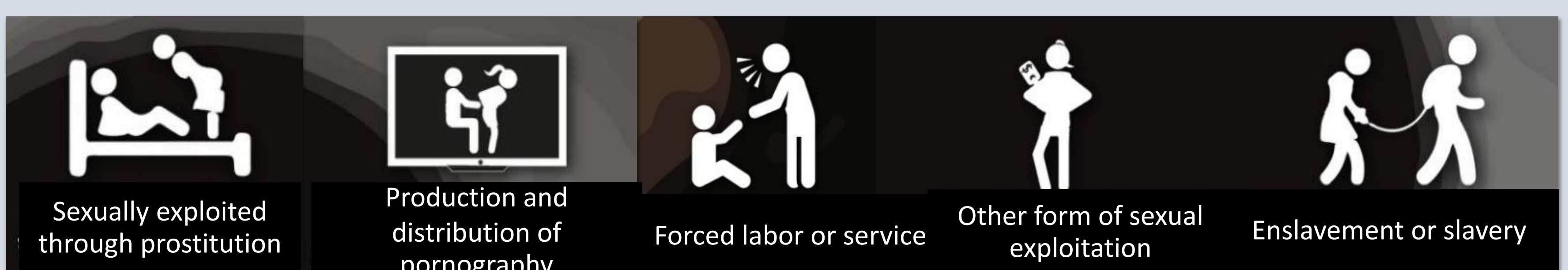


The key is to work with VOT to develop necessary skills for living freely and independently so they do not fall victim to human trafficking again. ”

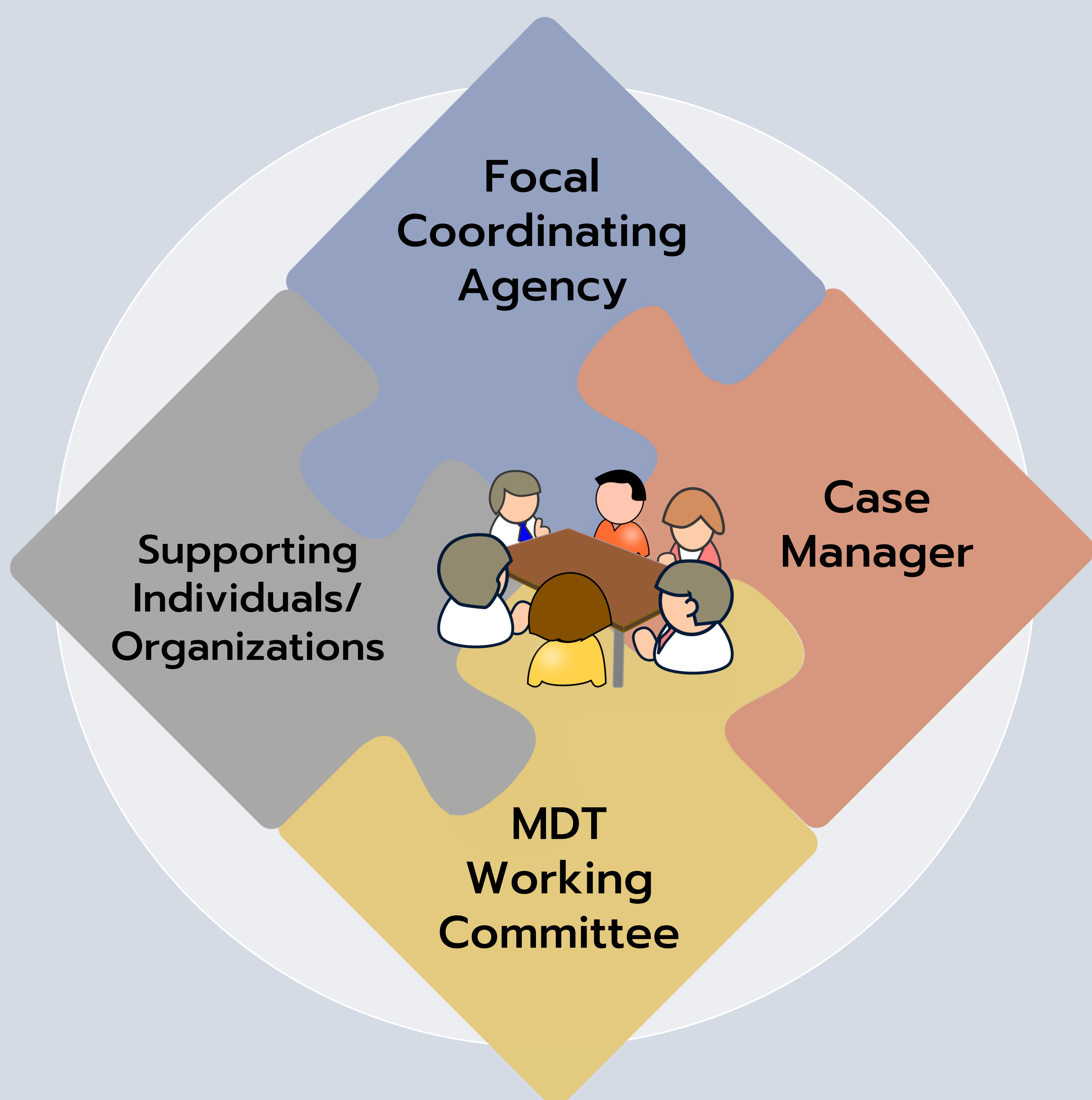
Who are the Victims of Trafficking?



Scope of Social Reintegration for Thai VOT



Assistance Coordination/Provision Mechanism



1. Focal Coordinating Agency

International Level : Protection of Thai Nationals Division
Department of Consular Affairs,
Ministry of Foreign Affairs

National Level : Division of Anti-Trafficking in Persons
Ministry of Social Development and Human Security

Regional Level : Provincial Social Development and Human Security
Office

2. Case Manager

Social workers or competent officers are assigned to do the following tasks:

- Interview to determine assistance
- Compile data, coordinate, and refer cases to assistance
- Locate service providers and resources
- Oversee and follow up social reintegration

3. MDT Working Committee

A group of specialists, knowledgeable and skillful in different fields

Social Work and Medical *Social Worker, Psychologist, Doctor, Nurse*

Legal *Prosecutor, Lawyer, Legal Officer*

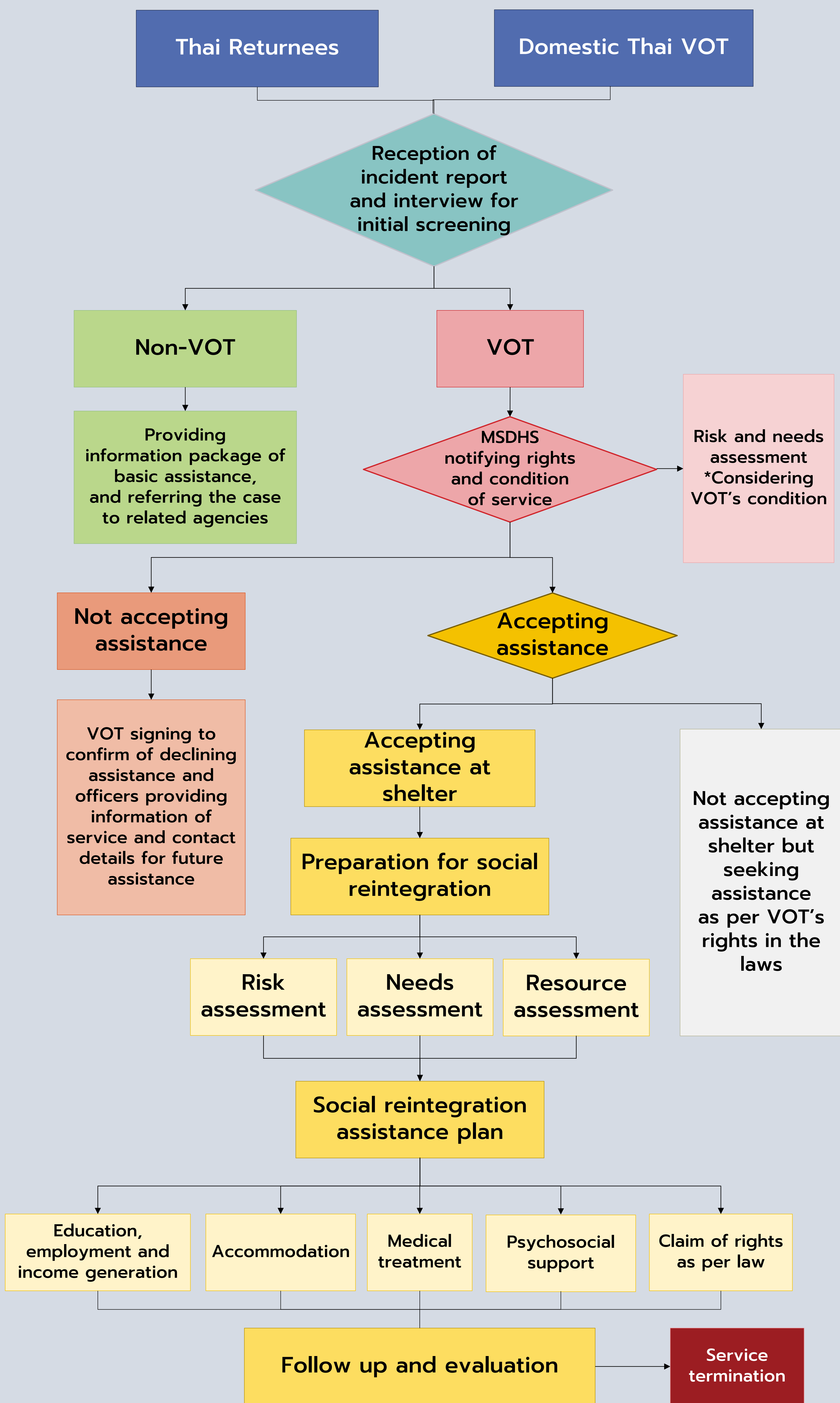
Social *Trainer, Social Development Officer, Mentor*

4. Supporting Individuals/Organizations

Those that are not directly relevant but can provide support for the social reintegration process

- Home for Children and Family
- Public Health Office
- Educational Service Area Office
- Employment Office
- Labor Protection and Welfare Officer
- Justice Office
- NGO/Volunteers
- VOT Peer-support Group

Social Reintegration Process



Various Services for Social Reintegration

