



Vo. 1: Issued on 31st July, 2017

WACAP NEWSLETTER

The Project for Capacity Development of Local Government for Strengthening Community Resilience in Acholi and West Nile Sub-Regions (WACAP)

1. Greeting from Ministry of Local Government

In June 2017, it's been one year since the Project for Capacity Development of Local Government for Strengthening Community Resilience in Acholi and West Nile Sub-Regions (WA-CAP) started. It is important to note that the Project design addresses improving the capacity of Local Governments (LGs) in areas of development planning and implementation of Community Development Projects and Programmes. In the LGs, the planning function is a shared responsibility from the village level to the district. It is, therefore, important to address the needs of the stakeholders in the planning process.

I am happy to note that capacity of the District Planners and Community Development Officers both at the district and the sub-county have been budgeted for in the capacity building interventions. However, the project success will largely depend on the participation of Sub-county Chiefs and Parish Chiefs. I hope it is not too late to plan and bring the two categories on board as well.

On the part of the LGs, it is important that counterpart officers are identified and directed to work with the project expert personnel to ensure acquisition of skills/ knowledge and attitude so that by expiry of the project capacity has been built to carry on with the same outputs and goals. Secondly, the LGs must plan and target for operation and maintenance of the project infrastructure to ensure sustainability.

It is also really important to keep on documenting critical events, learning lessons and devising mitigation measures to address the challenges and constraints so that the objectives and goals are achieved within the project period.

Finally, let me appreciate and recognize the goodwill and support of the Japanese Government through JICA to the people of Uganda in general and Acholi and West Nile Sub-Regions, in particular. My prayer is to have the same intervention replicated both horizontally and vertically in other areas of the country.



Ben Kumumanya

Permanent Secretary, MoLG

Ben Kumumanya

Permanent Secretary

2. Greeting from Chief Advisor

The project aims at capacity development of LGs in order to strengthen the resilience of communities. We have to make all out efforts to connect the intervention and outcomes of the intervention with the goal; enhancement of community resilience. To approach its purpose and goal, the Project is taking the existing systems of the Government and supports the systems to be strengthened. The achievement of the Project's purpose may therefore depend on which systems the Project takes and how far the Project contribute to strengthening the systems. Also, instead of creating/ enhancing general knowledge of LG officers, the focuses lie on method, work environment and capacity of LG officers to deal with the system (s). Therefore, such factors as mind-sets of LG officers and those who are involved in the intervention are also inevitably playing important roles.



Dr. KUBO Yusuke
Chief Advisor,
WACAP Project

One year has passed since the Project started. Approaches and methods that the Project takes have been carried over from the previous Project (ACAP) implemented in Acholi Sub-Region from 2011 to 2015. One of the outcomes carried over from the stakeholders. The target area of the current Project is wide, covering 16 districts in 2 Sub-Regions. I believe that through this newsletter we could share with readers the efforts and struggles of the Project. Capacity development work takes time.

OUTLINE OF THE WA-CAP PROJECT

- **Project Purpose:**

To strengthen the capacity of local governments for planning and implementation for inclusive and accountable community development in Acholi and West Nile Sub-Regions.

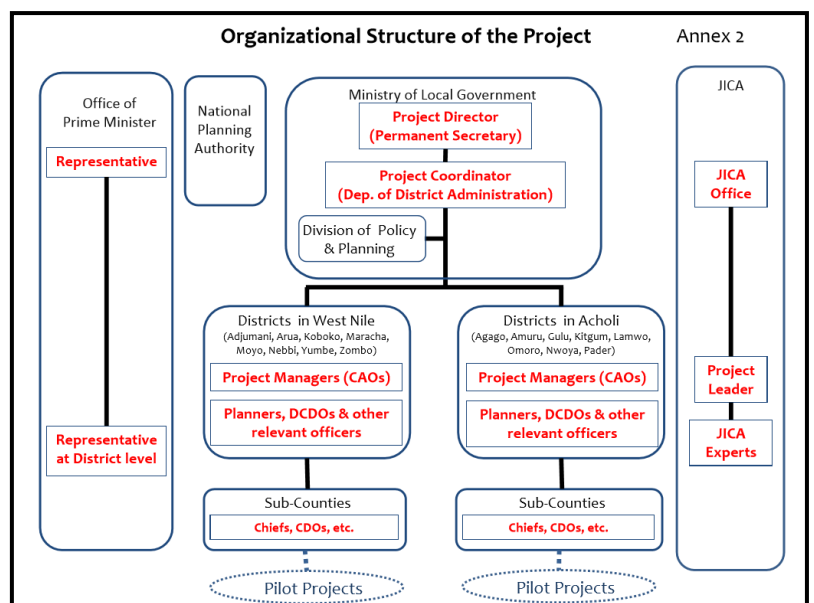
- **Period:** From June 2106 to June 2020 (4 years)
- **Project Area:** Districts in Acholi and West Nile Sub-Regions

- **Implementing Agencies:**

Ministry of Local Government (MoLG) &
All DLGs in Acholi and West Nile Sub-Regions

- **Project Outputs:**

- (1) Utilization of planning tools is promoted in all districts in West Nile Sub-Region.
- (2) Utilization of planning tool is sustained in all districts in Acholi Sub-Region.
- (3) Community development activities miming at social cohesion and inclusion are implemented in Acholi and West Nile Sub-Regions.



3. Strengthening LG Planning (Output 1&2)

Tools for LGs/LLGs to perform effectively in the annual planning/budgeting cycle



Pakwach Planner explaining the tools with Nebbi District Planner during ToT

Planning is one fundamental element for any government to effectively function and to be accountable for their service delivery. To further strengthen the capacity of Local Governments (LGs) in this regard, MoLG and WA-CAP, in partnership with NPA and OPM, have been jointly working with 16 districts in West Nile and Acholi sub-regions.

What are the 'Planning Tools' for LLGs?

Planning tools were initially developed during A-CAP implementation (2011-2015) in Acholi sub-region. They have been designed to assist LLGs, more specifically sub-counties (S/Cs) and town councils (T/Cs), to systematize 1) annual data collection, 2) identification of community needs, 3) prioritization of LLG investment areas, and 4) provision of feedback on completed/approved priorities to lower levels – down to communities. Effectively utilized in the annual planning/budgeting process, those planning tools should enable LLGs to carry out their requirements in more accountable, transparent, consistent and far more efficient manner! They were introduced to S/Cs and T/Cs in Acholi sub-region over a period of 2014-2015.

Tool Induction in West Nile

Having reviewed and updated, eight districts in West Nile sub-region conducted Training of Trainers (TOT) to introduce planning tools to LLGs in February 2017. The updated tools are composed of: 1) simplified **formats** for Parish Chiefs and CDOs to collect, compile and disseminate data, information and community/parish priorities; 2) **training manual** for S/C Chiefs and CDOs to guide other Technical Planning Committee (TPC) members in their planning procedures; 3) a set of **criteria** for TPC members to **score development priorities** for budget allocation/potential funding; and 4) a **monitoring check list** for S/C Chiefs to monitor and manage LLG annual planning/budgeting process. In essence, these planning tools are simplified yet conducive tools for LGs to be accountable and transparent in selecting development priorities and responding to community needs. Following the cascaded induction to TPC members, various S/Cs and T/Cs have moved to data collection across districts in West Nile.



Zombo Planner and DCDO discussing the way forward with LLG participants

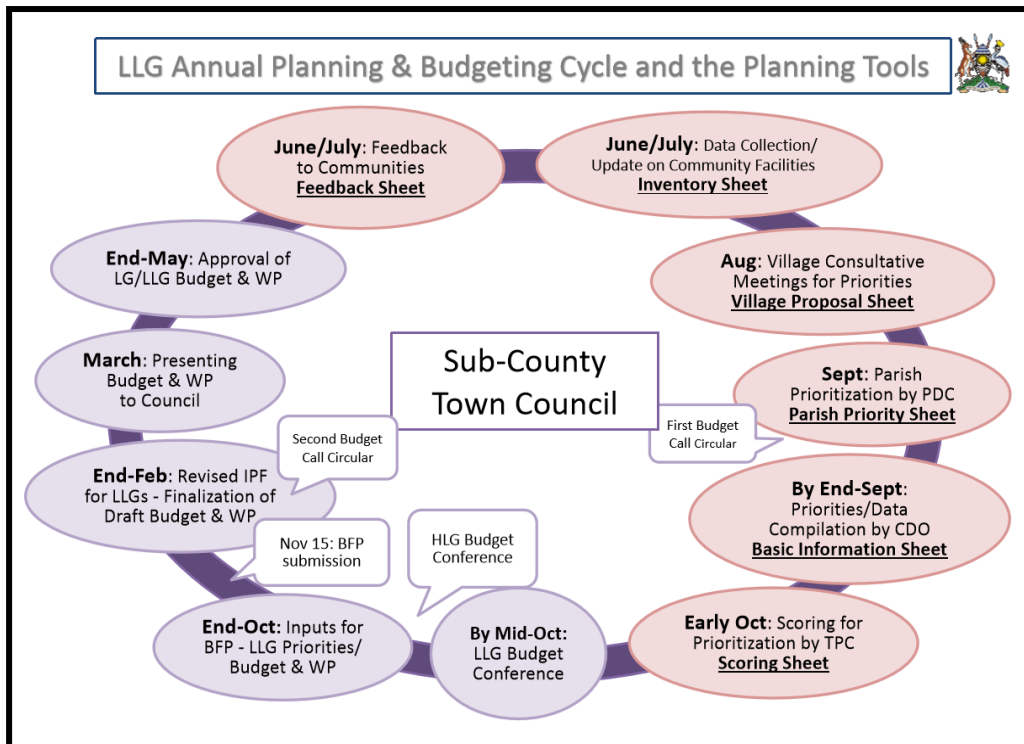
FY 2017/18 – Critical New Planning Cycle

A new cycle of planning/budgeting has just commenced. The next few months are going to be extremely critical for S/Cs and T/Cs in West Nile to apply their planning tools into actual FY 2018/19 planning and budgeting process. Now that LLGs in the Northern Region must be accountable for DDEG allocation and execution, the updated tools have been made available timely in that respect. Equally, FY 2017/18 will be crucial for Acholi sub-region as well. Districts in the sub-region are forerunners in Uganda in utilizing the tools since 2014/15. Valuable lessons and experiences are emerging to be learned among LG/LLG stakeholders. In these efforts, WA-CAP is going to continue working closely with 16 districts in the two sub-regions to promote the effective and sustainable utilization of their planning tools!

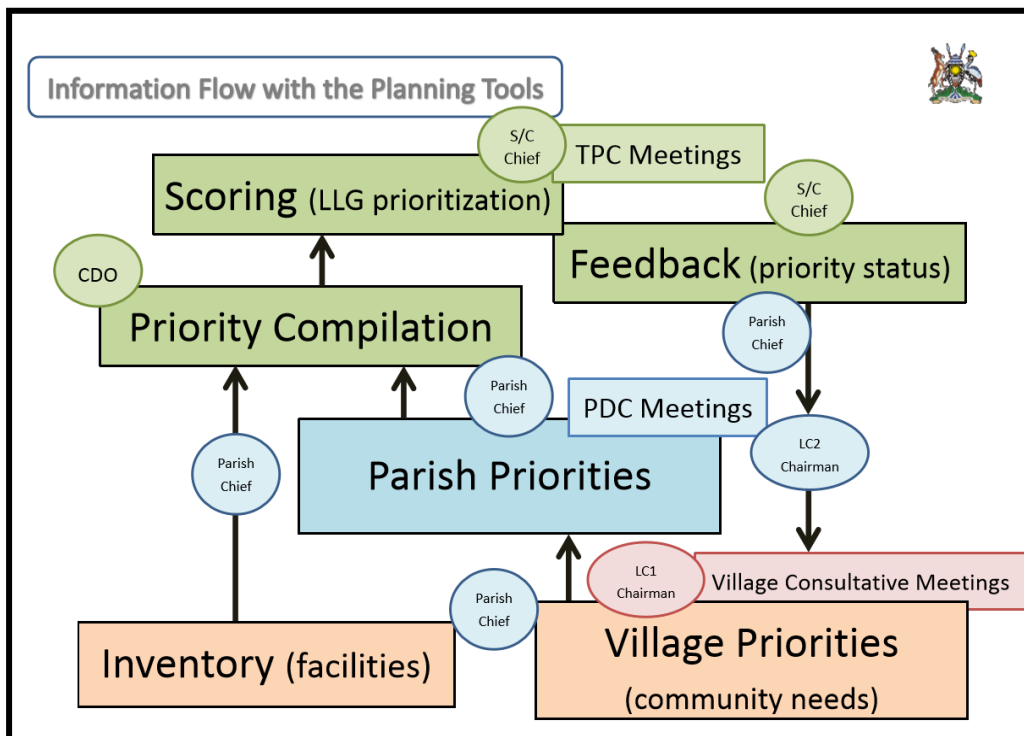


CDO presenting the group exercise results of scoring during Maracha District ToT

3. Strengthening LG Planning (Output 1&2)



LLG Annual Planning/ Budgeting Process & the Planning Tools



Data/ Information/ Feedback Circulation across 3 Levels

3. Strengthening LG Planning (Output 1&2)

Focus on District Planner - Shaphan Andeku, Arua District Planner-



In this first edition of WA-CAP Newsletter, we are delighted to feature Shaphan, District Planner of Arua District.

Born in Arua District, Shaphan grew up in Arua, Moroto, and Kampala since his family was relocated along with his father's postings as a civil servant. Shaphan enjoyed the surrounding nature where he swam in streams and hunted birds with catapults as a young boy! During war, however, Shaphan had to move to Jinja and completed his secondary education with a major in physics, mathematics and chemistry there. Following that, he went onto higher education and obtained his first degree in statistics.

Shaphan was initially interested in running a private business of his own. Instead, he started his career by working with a CSO engaging in refugee relief. According to Planner, back in the early 1990s, there were around 25,000 South Sudanese refugees in Rhino Camp, where he was involved in relief work for the next 2.5 years.

Then in 1997, Shaphan joined Arua District Government as Statistician/Planner and has since been engaging in LG planning. Over the last 20 years, Arua District has seen major transitions in various areas, says Shaphan. Most of all, around the time when he started his career as a public servant, Universal Primary Education or UPE came in. Back then, primary school enrollment was still limited. UPE initiatives, however, substantially boosted enrollment rates while massive investment increased the numbers of classrooms, desks, latrines, and so forth. Among other outstanding development realized in Arua District include infrastructure development, more specifically road networks and bridges, largely funded by PRDP, as well as safe water coverage for population in the district.

Concerning **WA-CAP**, Shaphan envisions that the inducted **planning tools** will assist LGs/LLGs in improving data collection and prioritization with a means of scoring. More reliable data, influencing decision making, and more accountable prioritization should make a planning process more logical, whereby LGs/LLGs can produce plans that are responsive to real needs and more likely to be accepted by communities. In concluding, Shaphan stresses that Arua District and sub-counties should become able to generate development plans with efficiency and accountability for more appropriate resource allocations along with the adopted tools.

Interviewed by:

Satomi Kamei

WA-CAP Planning Advisor

4. Livelihood Improvement (Output 3)

Livelihood activity

Output 3 of the WA-CAP is to support local governments, particularly Sub-County (LC3), for their capacity enhancement in implementing community driven development (CDD) activities. To do so, the WA-CAP carried out pilot projects for livelihood improvement in the selected Sub-counties in Acholi and West Nile Sub-Regions.

In the first year of the project, the WA-CAP has been implementing 32 pilot projects in the following S/Cs in Acholi Sub-Region: 30 groups for Animal Traction and 2 groups for Heifer Rearing.

Dis- trict	Pilot S/C
Amuru	Amuru, Atiak
Nwoya	Purongo, Alero
Kitgum	Mucwini, Namokora
Pader	Puranga, Pajule
Agago	Patongo, Omiya Pachwa
Lamwo	Padibe East, Palabek Ogili
Gulu	Awach, Patiko

Process of the Pilot Projects

1) Orientation of the Pilot Projects

The concept of the Pilot Projects was formed through discussion with district CDOs and presented by the District CDOs to chiefs and CDOs of the S/Cs at the orientation workshop.



2)

Orientation workshop on the Pilot Project
(Kitgum District)

Group Assessment

The CDOs assessed groups who applied for the Pilot Projects with technical support from the WA-CAP.

3) Preparation for the Projects

There were three meetings with CDOs and the groups to make action plan and rules for the Pilot Projects. Through the meetings, preparedness of the groups to implement the Pilot Project was developed with CDOs' facilitation.



Groups made Action Plan (Plurongo S/C)

For example, group members constructed "kraal" and shed for the animals and purchased drugs to maintain the health of the animals.



Construction of Kraal and Shed (Atiak S/C)

4) Procurement

Members of the groups selected animals and related items, which were provided by the WA-CAP to the groups.

5) Implementation of livelihood activities

11 groups who completed the procurement by the end of April has started using oxen for cultivation in this rainy season.



Ploughing in group garden (Alero S/C)

5. Equipment support for improvement of work environment

[Motorcycle provision]

In order to strengthen the mechanism for planning and community development in West Nile Sub-Region, WA-CAP Project provides off-road motorcycles (YAMAHA125) to District Local governments (DLGs) to improve their work environment and mobility to the field.



In the 1st term, a total of 31 motorcycles were provided to sub-county CDOs in 3 districts (11 in Arua, 11 in Zombo and 9 in Adjumani). Hand-over ceremonies were conducted in the end of March, 2017. During the ceremonies, all the DLGs has signed agreements with the Project on this equipment support, and promised to take full responsibility to maintain and utilize them efficiently and effectively.

The Project will continue to support District Local Governments in West Nile, due to utilize equipment so that the public get maximum benefit.



6. WACAP Project Staff & Office



1) WACAP Project Office in Arua
 Plot 3, Municipality Road,
 Arua District
 P.O. Box 484, Arua
 Contact: +256-393216293



2) WACAP Project Office in Gulu
 Gulu District Local Government
 Production/ Agriculture Department
 Plot 6, Princes Road, Gulu
 P.O. Box 817, Gulu
 Contact: +256-393275358