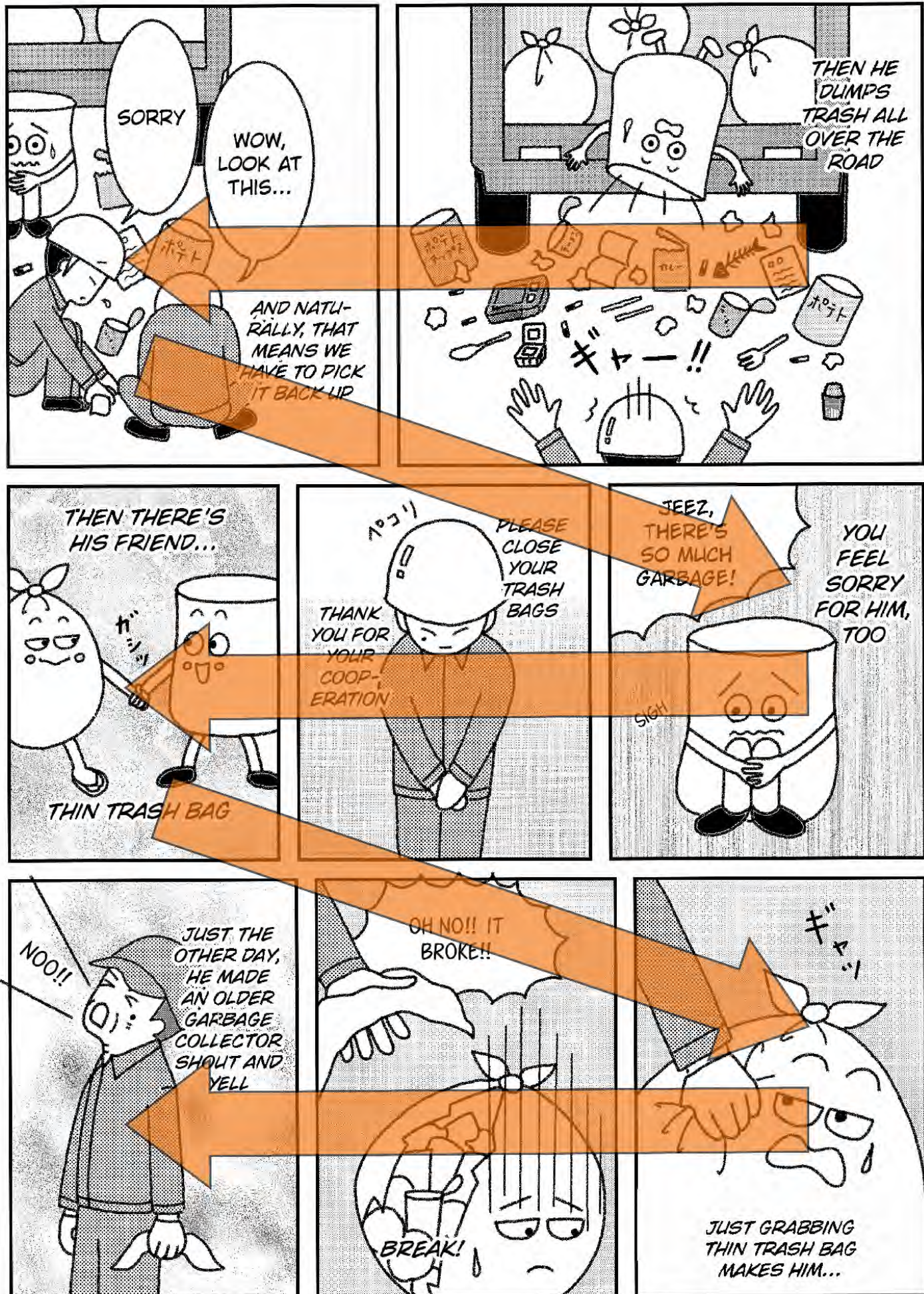


How to read this comic

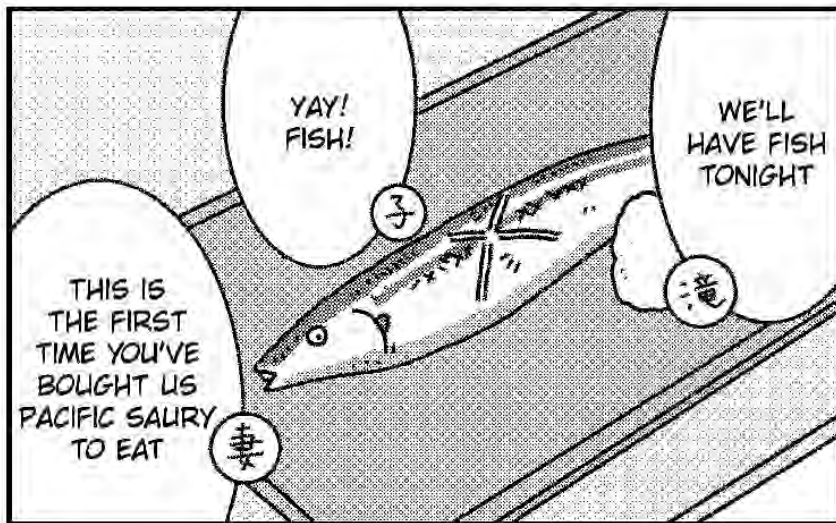


*Read from the first row from right to left, then move down to the second row and read again from right to left.

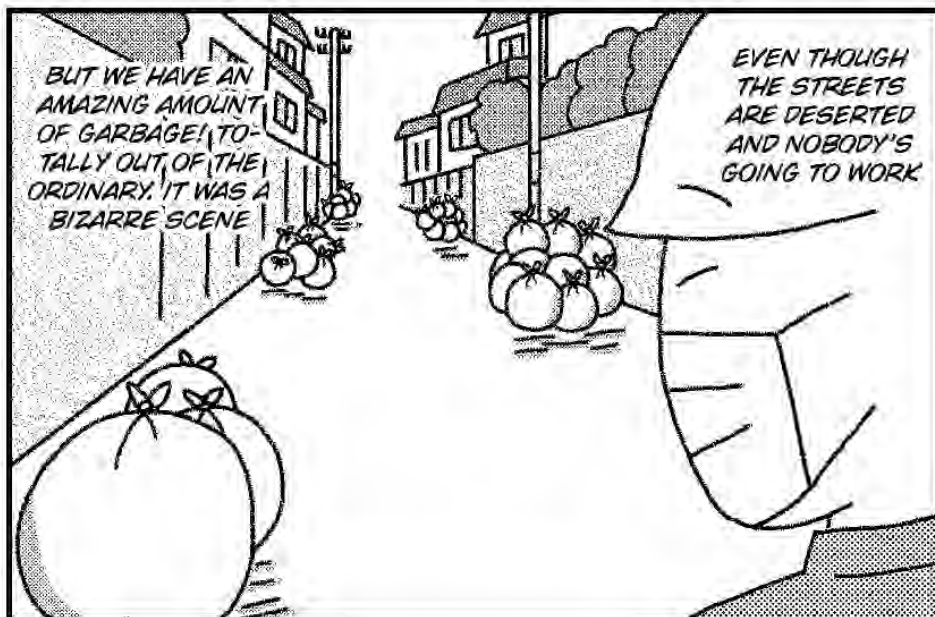
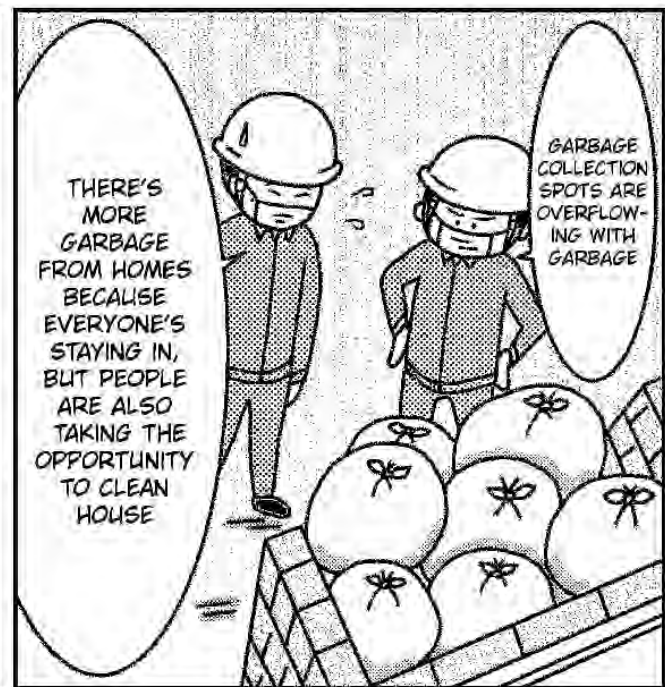
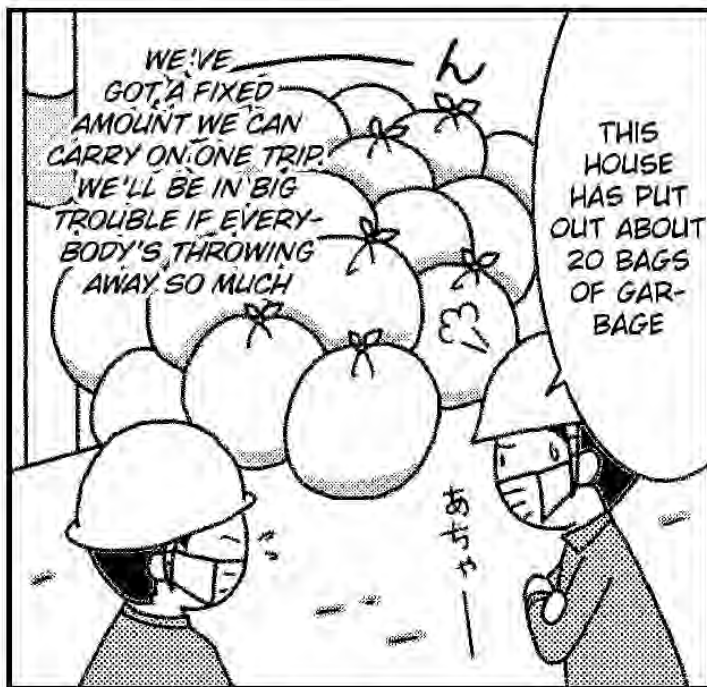
THE NEW NORMAL FOR GARBAGE COLLECTORS

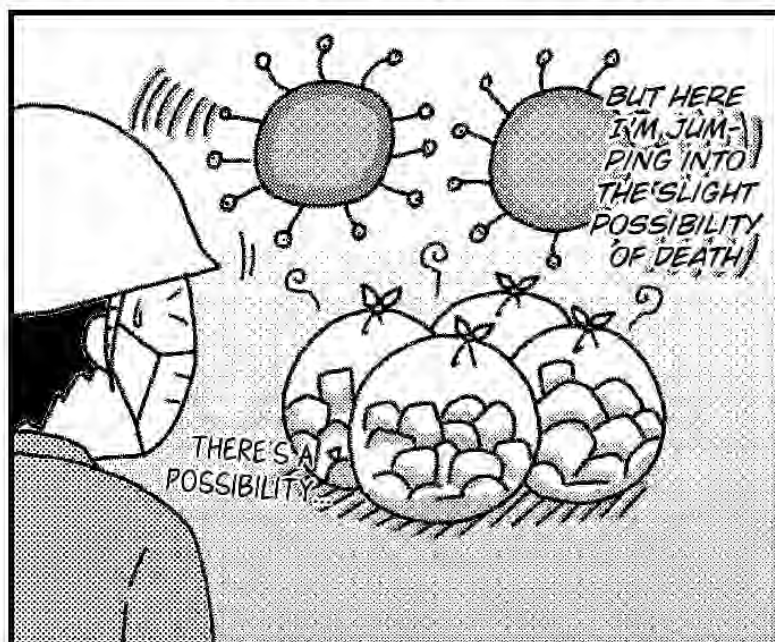
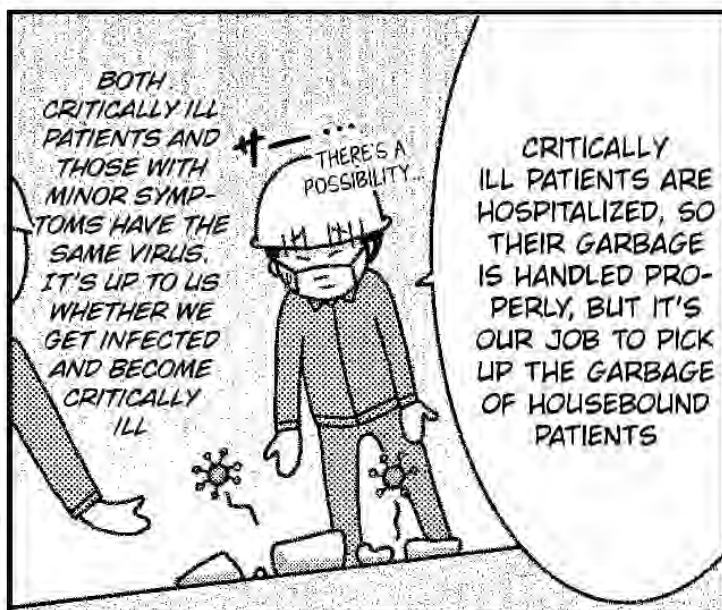


*Read from the first row from right to left, then move down to the second row and read again from right to left.







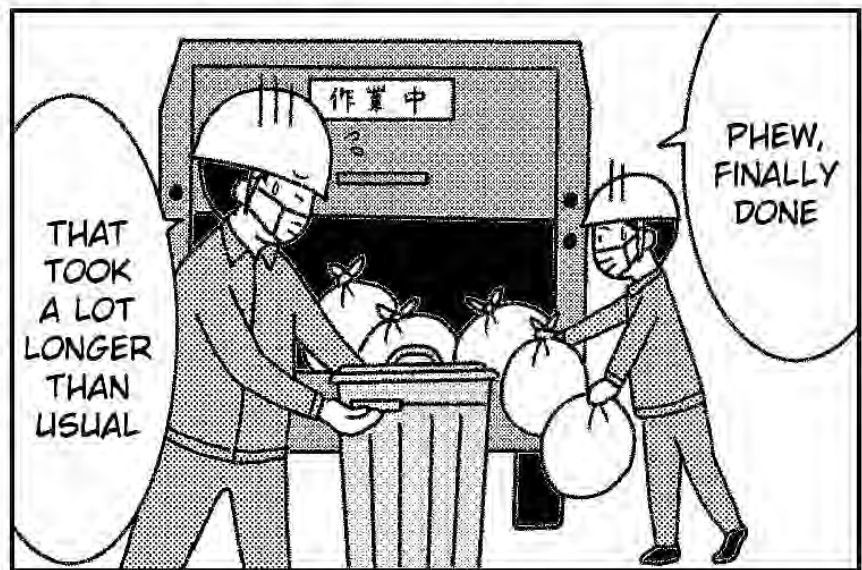




I FELT LIKE
I WAS LIVING
IN THE VALLEY
BETWEEN LIFE
AND DEATH



BUT
HEY, JUST
TAKE A
LOOK

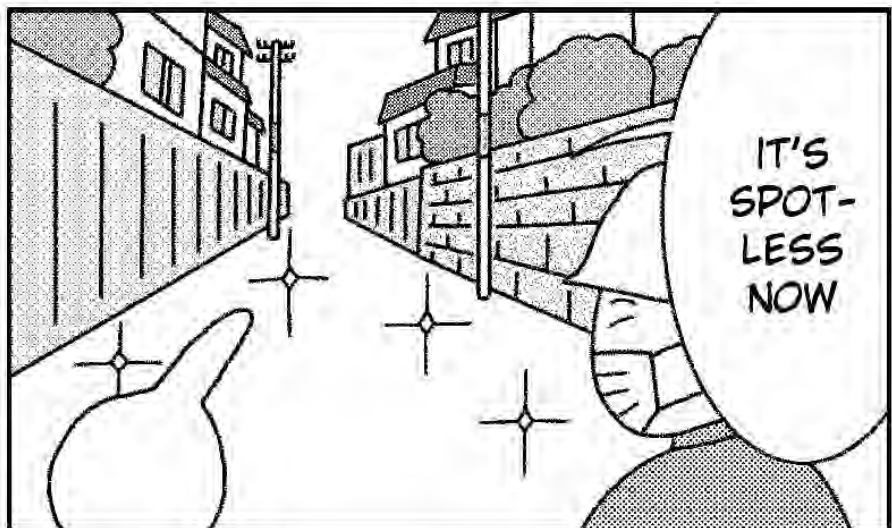


THAT
TOOK
A LOT
LONGER
THAN
USUAL

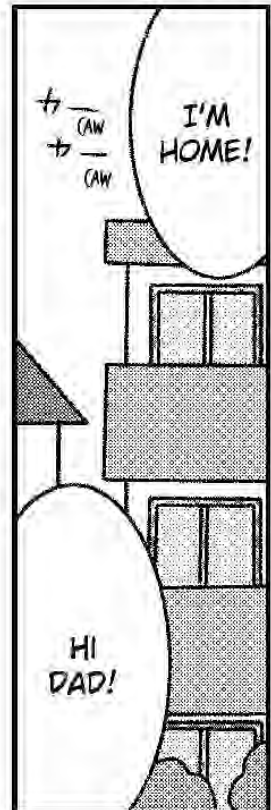
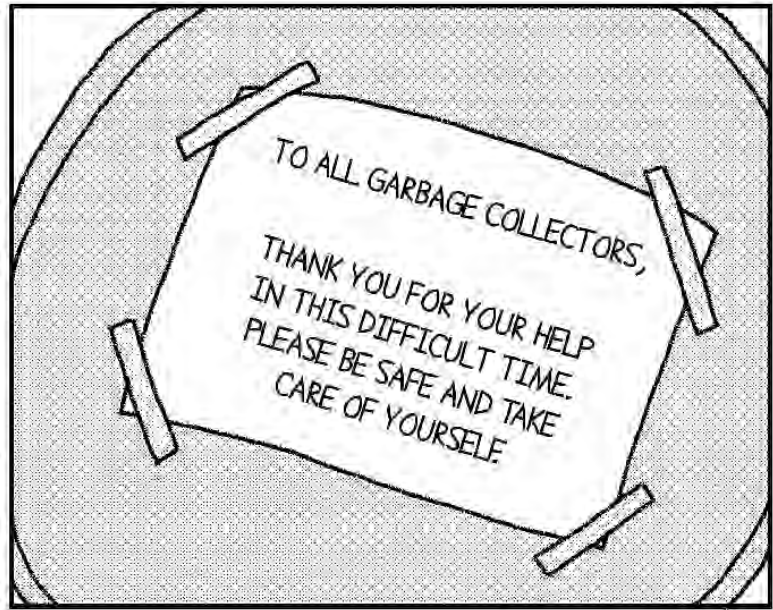
PHEW,
FINALLY
DONE



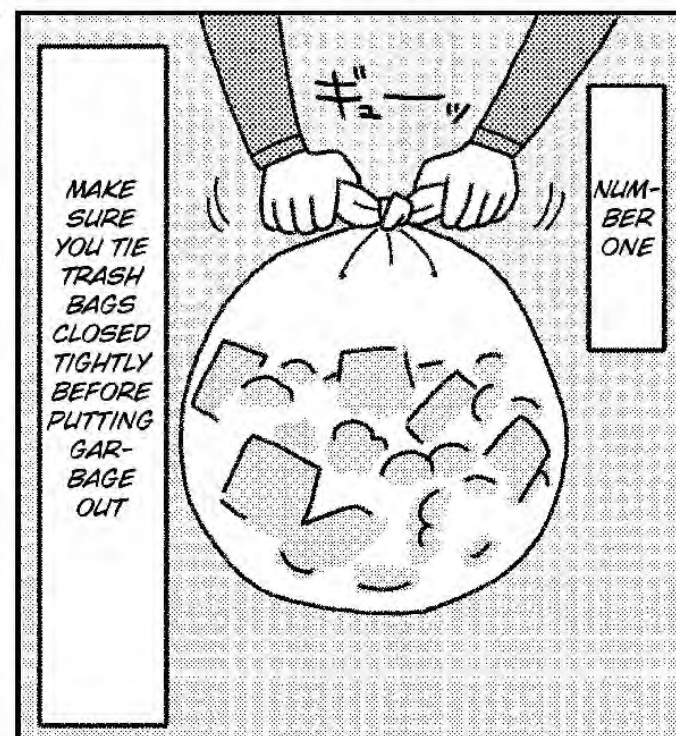
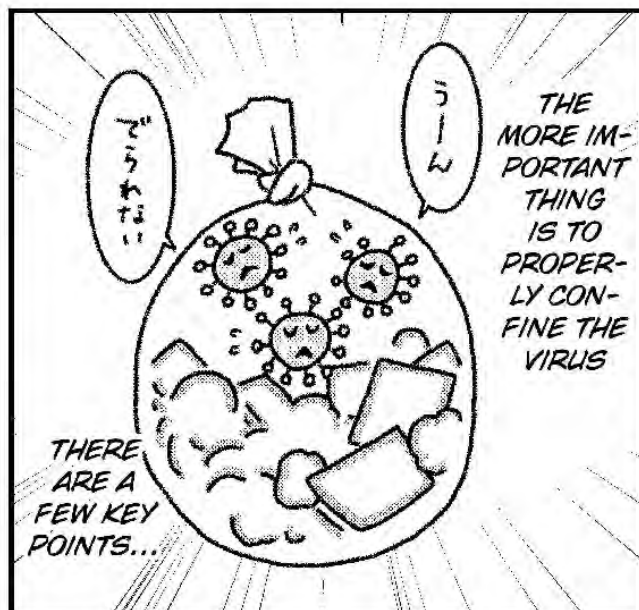
THERE
WAS SO
MUCH GAR-
BAGE HERE
IN THE
MORNING



IT'S
SPOT-
LESS
NOW



HOW TO TAKE OUT THE TRASH IN THE COVID-19 ENVIRONMENT



*Read from the first row from right to left, then move down to the second row and read again from right to left.



SOME OF THOSE PEOPLE PUT THEIR GARBAGE OUT WITHOUT TYING THE BAG CLOSED. PLEASE, DON'T DO THAT!

IF THE VIRUS IS IN THAT GARBAGE, THEN IT WILL SPILL OUTSIDE AND THAT MAY LEAD TO INFECTION



THE CONTENTS SPILL OUT

WHEN A BAG GETS CAUGHT ON THE GARBAGE TRUCK'S COMPACTOR,

あーあ

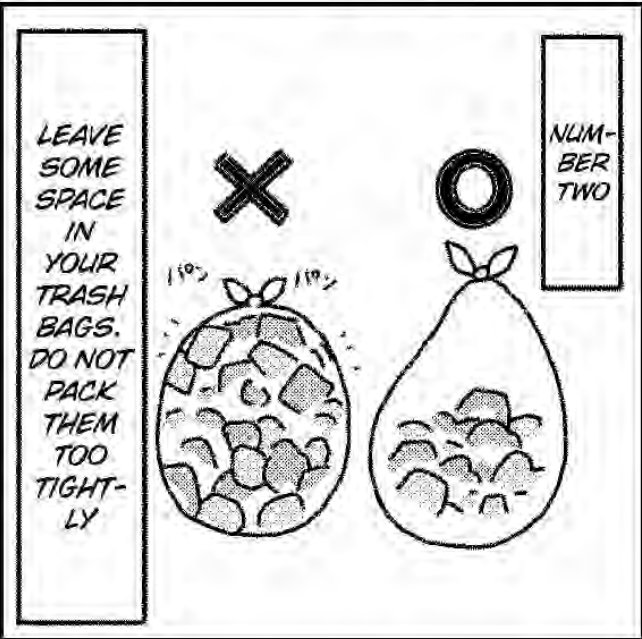


BUT IF YOU DO THAT...

(WHINING NOISE)

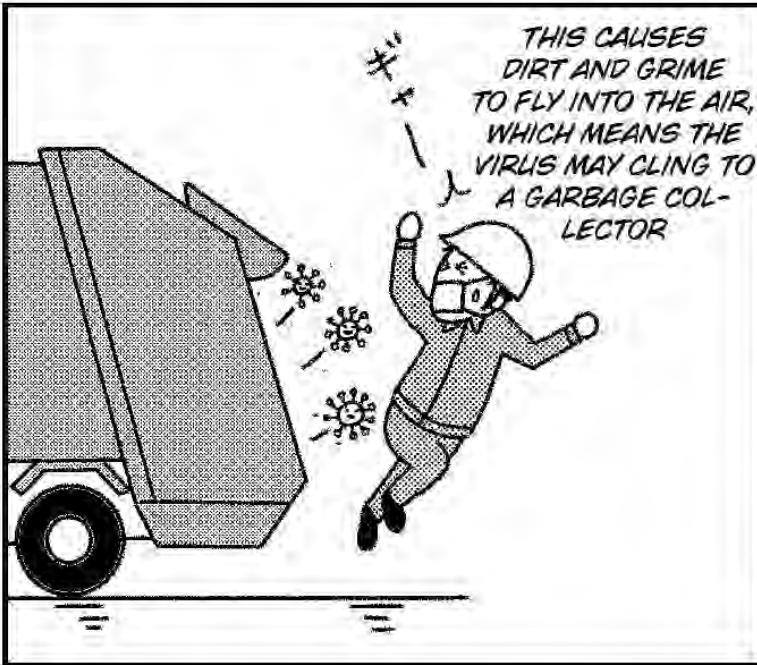
SOME PEOPLE FILL THEIR BAGS UP UNTIL THEY'RE TOTALLY FULL AND ALMOST BURSTING

UH OH...



LEAVE SOME SPACE IN YOUR TRASH BAGS. DO NOT PACK THEM TOO TIGHTLY

NUMBER TWO



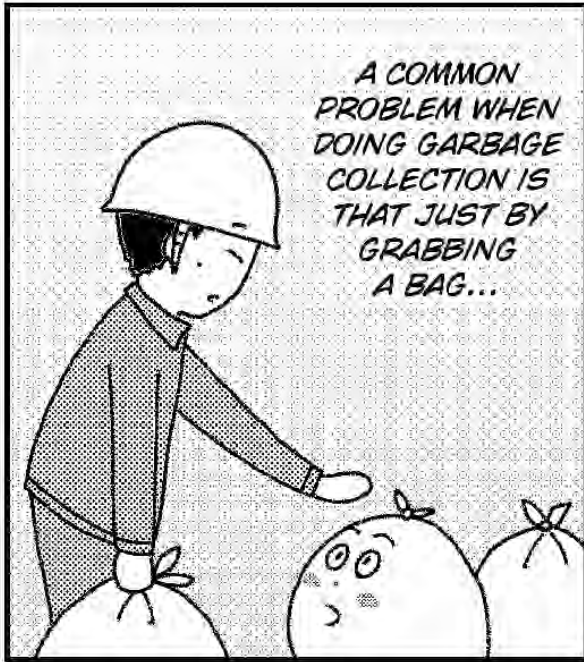
THIS CAUSES DIRT AND GRIME TO FLY INTO THE AIR, WHICH MEANS THE VIRUS MAY CLING TO A GARBAGE COLLECTOR



OH NO! I KNEW IT!

BANG!

WHEN THE BAG IS PRESSED BY THE GARBAGE TRUCK COMPRESSOR, IT BURSTS AND THE CONTENTS COME OUT.



A COMMON PROBLEM WHEN DOING GARBAGE COLLECTION IS THAT JUST BY GRABBING A BAG...



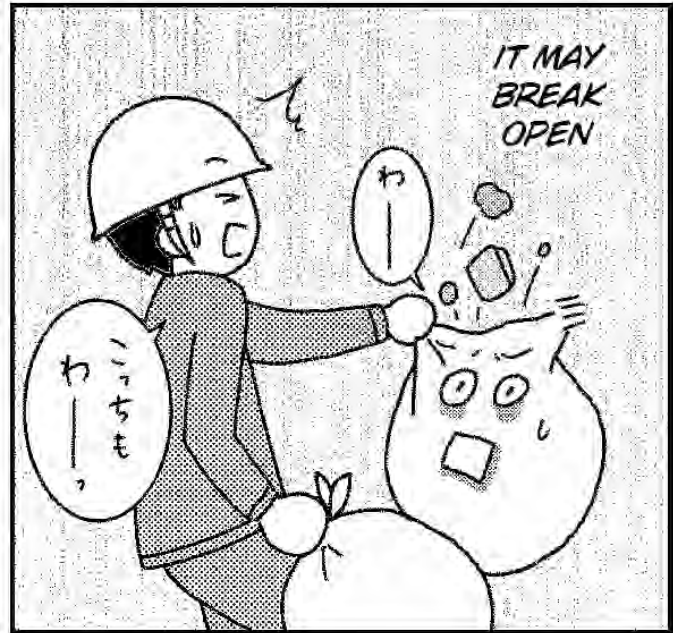
IF THE MATERIAL IS THIN OR THE BAG IS WEAK, USE TWO BAGS

NUMBER THREE



SORRY!
THAT HAPPENS A LOT

IN THIS CASE, AS WELL, IT'S DANGEROUS FOR GARBAGE COLLECTORS BECAUSE THEY'RE USING THEIR HANDS

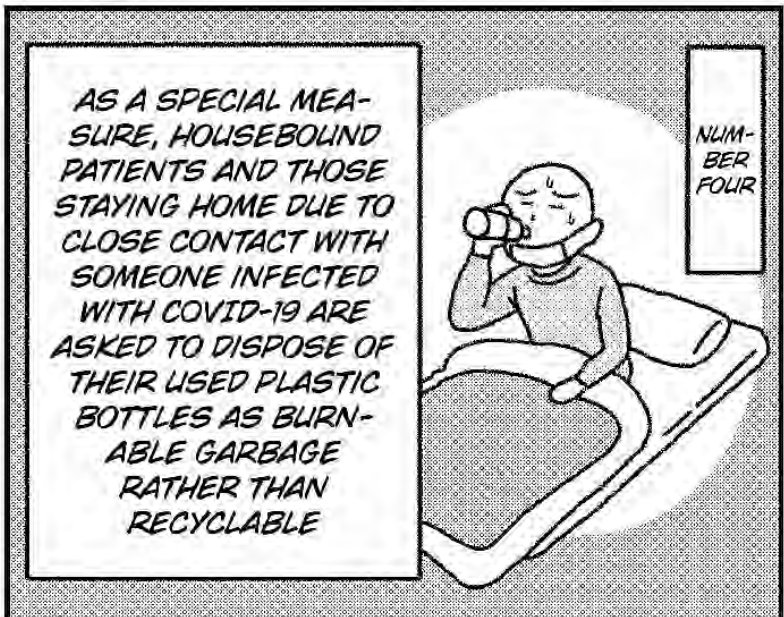


IT MAY BREAK OPEN

わーっ
こっちも

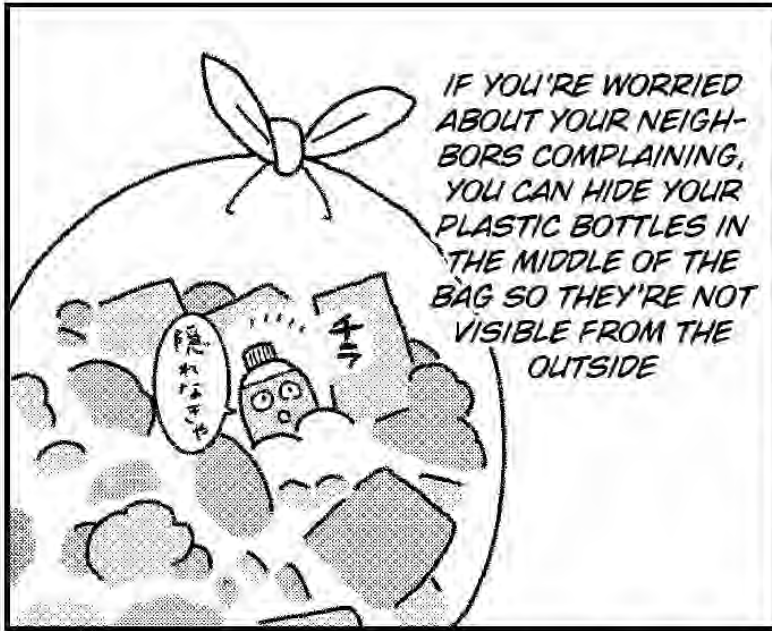


SUPPOSEDLY, COVID-19 CAN LIVE FOR THREE DAYS ON A PLASTIC SURFACE. IF YOU THROW OUT A USED PLASTIC BOTTLE AS RECYCLABLES...

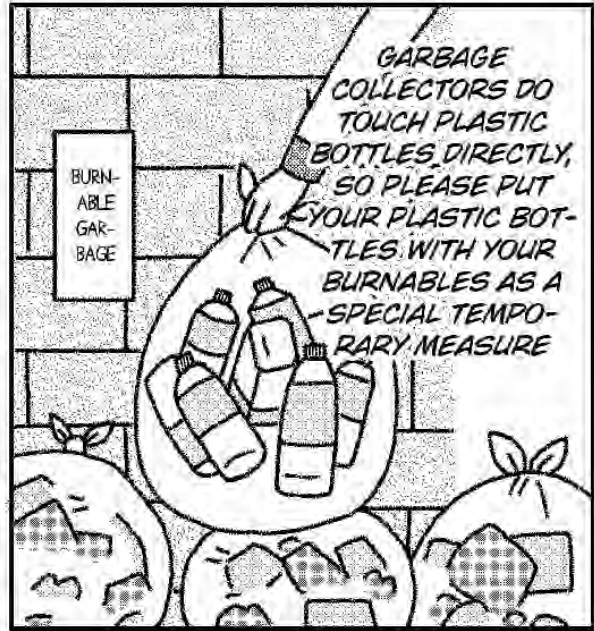


AS A SPECIAL MEASURE, HOUSEBOUND PATIENTS AND THOSE STAYING HOME DUE TO CLOSE CONTACT WITH SOMEONE INFECTED WITH COVID-19 ARE ASKED TO DISPOSE OF THEIR USED PLASTIC BOTTLES AS BURNABLE GARBAGE RATHER THAN RECYCLABLE

NUMBER FOUR



IF YOU'RE WORRIED ABOUT YOUR NEIGHBORS COMPLAINING, YOU CAN HIDE YOUR PLASTIC BOTTLES IN THE MIDDLE OF THE BAG SO THEY'RE NOT VISIBLE FROM THE OUTSIDE

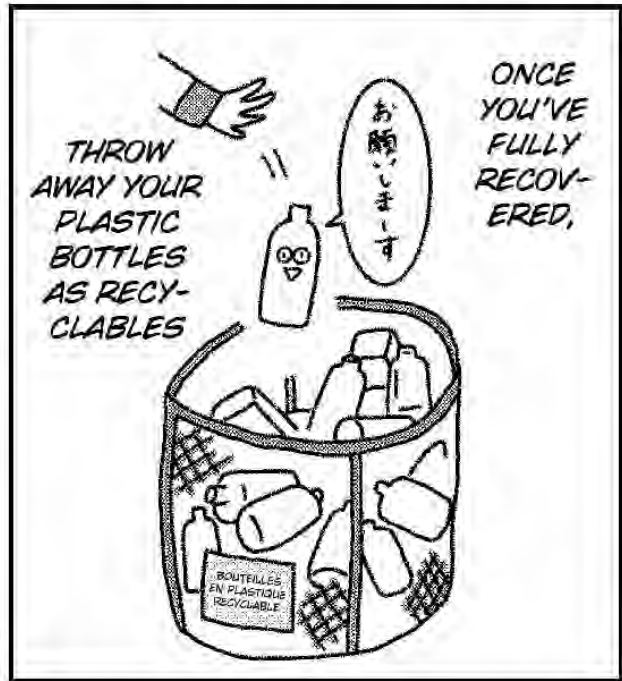


GARBAGE COLLECTORS DO TOUCH PLASTIC BOTTLES DIRECTLY, SO PLEASE PUT YOUR PLASTIC BOTTLES WITH YOUR BURNABLES AS A SPECIAL TEMPORARY MEASURE



ALSO, PLEASE STOP BUYING UP ALL THE MASKS

THIS HAS BEEN A QUICK RUN-DOWN. IF YOU COULD WATCH OUT FOR THE ABOVE POINTS, WE GARBAGE COLLECTOR WOULD APPRECIATE IT!



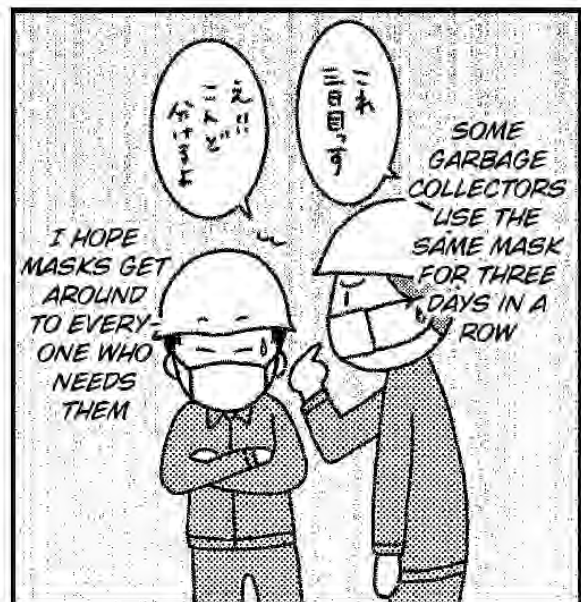
THROW AWAY YOUR PLASTIC BOTTLES AS RECYCLABLES

ONCE YOU'VE FULLY RECOVERED,



THESE ARE TRYING TIMES, BUT IF YOU COULD COOPERATE WITH THESE REQUESTS, WE GARBAGE COLLECTORS WOULD BE SO GRATEFUL! LET'S ELIMINATE COVID-19 TOGETHER!

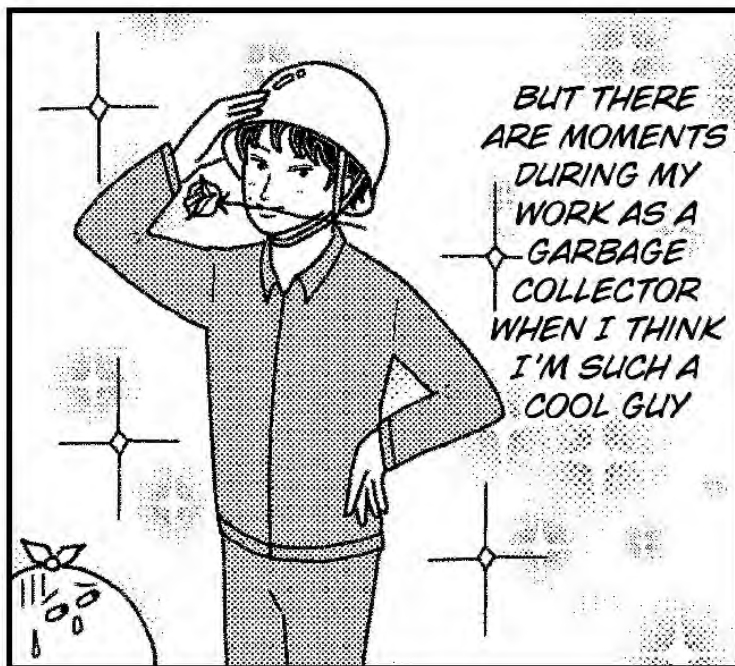
FINALLY, MAKE SURE YOU WASH YOUR HANDS AFTER PUTTING YOUR GARBAGE OUT!



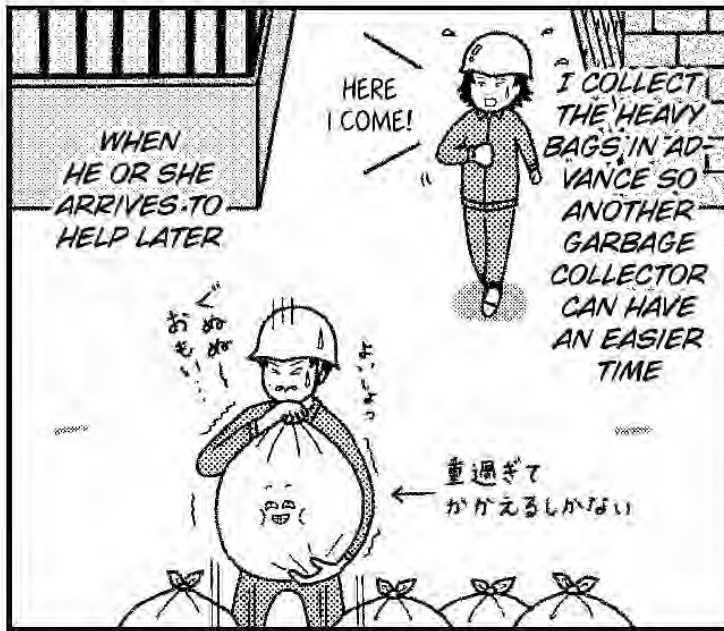
I HOPE MASKS GET AROUND TO EVERYONE WHO NEEDS THEM

SOME GARBAGE COLLECTORS USE THE SAME MASK FOR THREE DAYS IN A ROW

TOP THREE TIMES I THINK I'M THE COOLEST



*Read from the first row from right to left, then move down to the second row and read again from right to left.



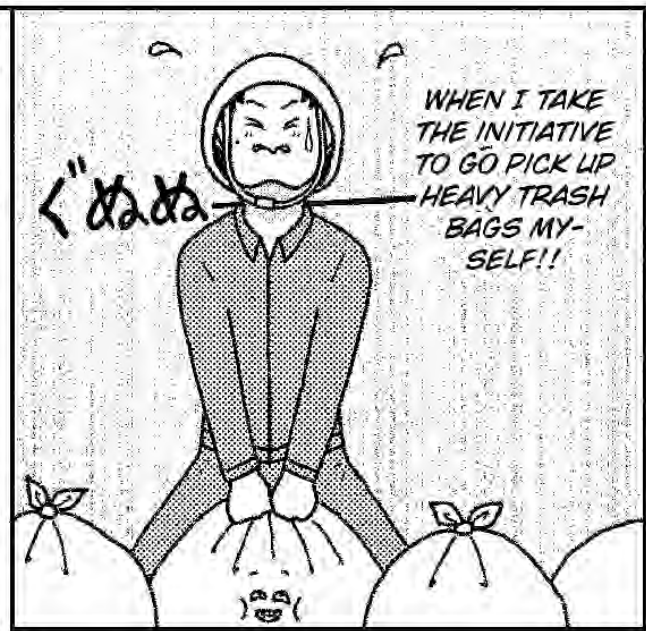
WHEN HE OR SHE ARRIVES TO HELP LATER

HERE I COME!

I COLLECT THE HEAVY BAGS IN ADVANCE SO ANOTHER GARBAGE COLLECTOR CAN HAVE AN EASIER TIME

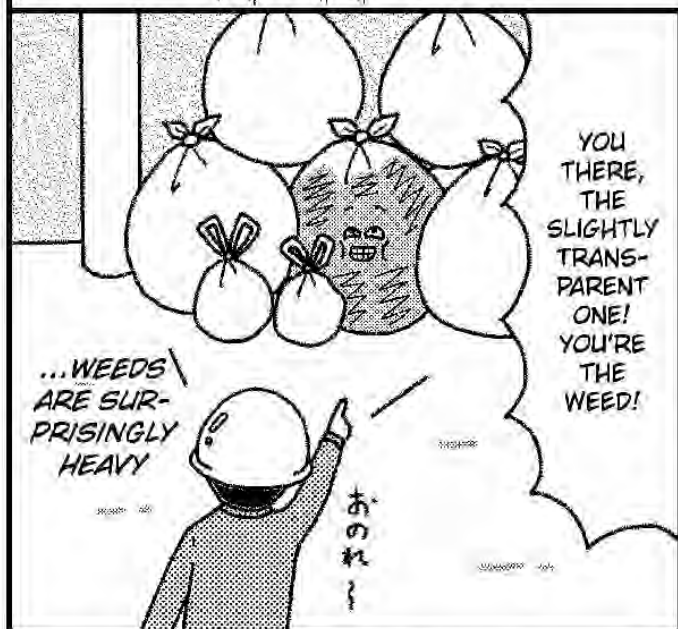
おめおめ...

重過ぎて
かかえるしかない



ぐだぐだ

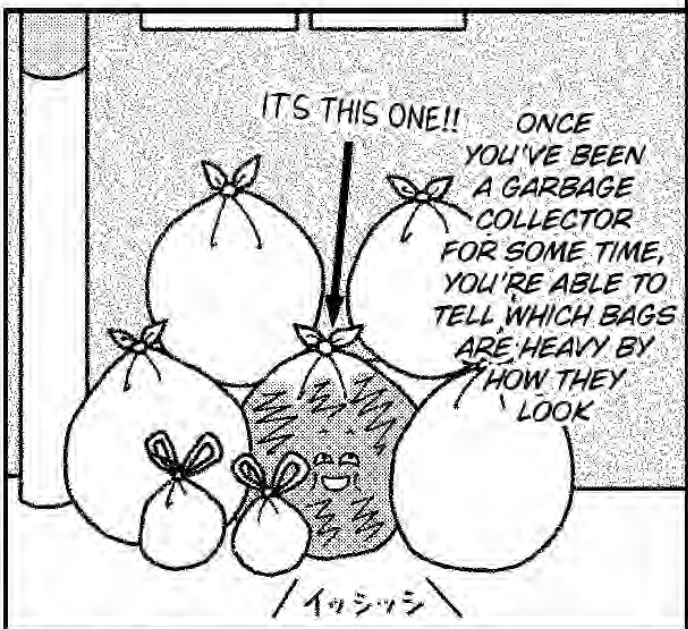
WHEN I TAKE THE INITIATIVE TO GO PICK UP HEAVY TRASH BAGS MYSELF!!



...NEEDS ARE SURPRISINGLY HEAVY

YOU THERE, THE SLIGHTLY TRANSPARENT ONE! YOU'RE THE NEED!

おめ...



IT'S THIS ONE!! ONCE YOU'VE BEEN A GARBAGE COLLECTOR FOR SOME TIME, YOU'RE ABLE TO TELL WHICH BAGS ARE HEAVY BY HOW THEY LOOK

イッパツ



DON'T WORK TOO HARD!

OK, LET'S GET THIS CLEANED UP ASAP!

DEEP DOWN, I'M THINKING, "WOW, WHAT A VALUABLE ASSET I AM."

OF COURSE, WHEN MY PARTNER SHOWS UP, I ACT NONCHALANT AND INNOCENT



WHEN I TAKE THE INITIATIVE TO PICK UP A HEAVY TRASH BAG, I THINK TO MYSELF, "I'M REALLY DOING MY PART!"

音作車



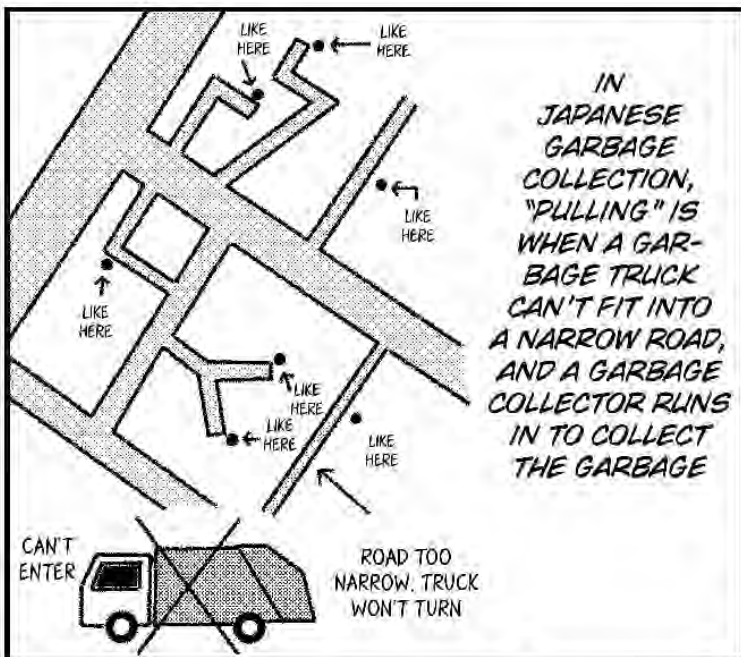
WHEN I CARRY LOTS OF BAGS AT ONE TIME



UH, SO WHAT ARE YOU DOING?

NOW, MOVING ON TO THE NEXT IN THE LIST!

NO. 2



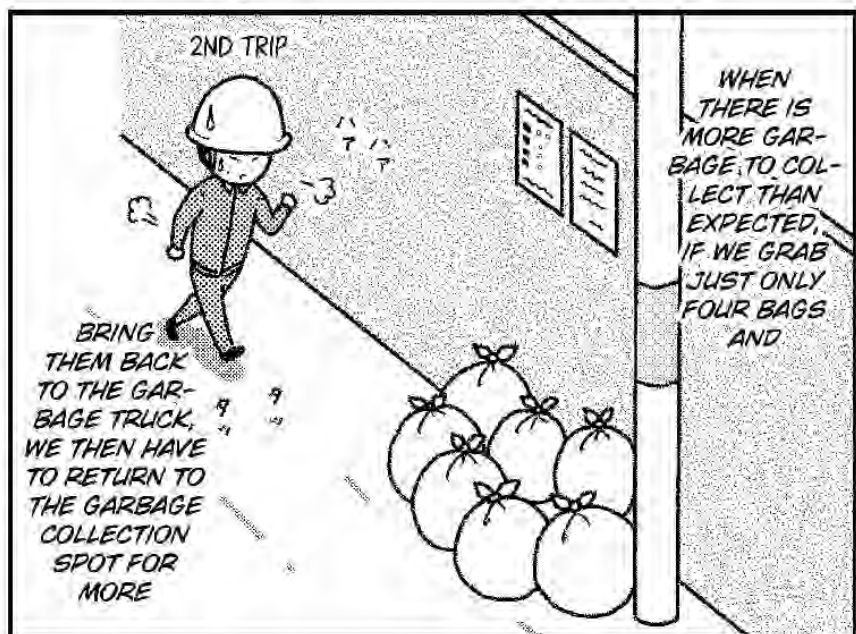
IN JAPANESE GARBAGE COLLECTION, "PULLING" IS WHEN A GARBAGE TRUCK CAN'T FIT INTO A NARROW ROAD, AND A GARBAGE COLLECTOR RUNS IN TO COLLECT THE GARBAGE



IN GARBAGE COLLECTION, YOU USUALLY CARRY 4 BAGS AT ONCE: 2 IN THE RIGHT HAND, 2 IN THE LEFT

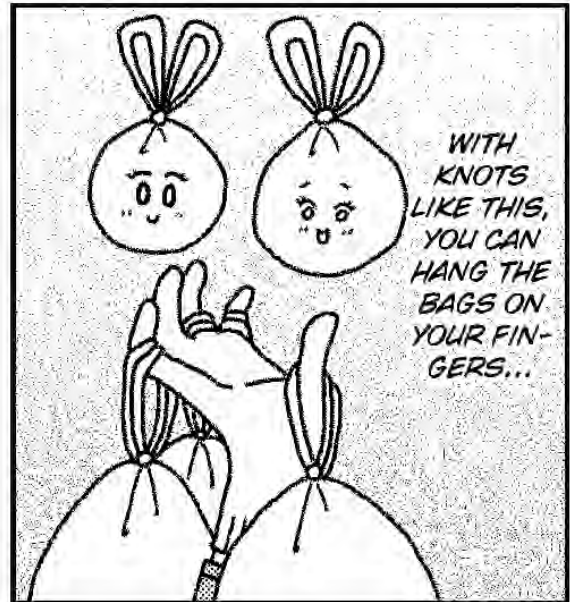
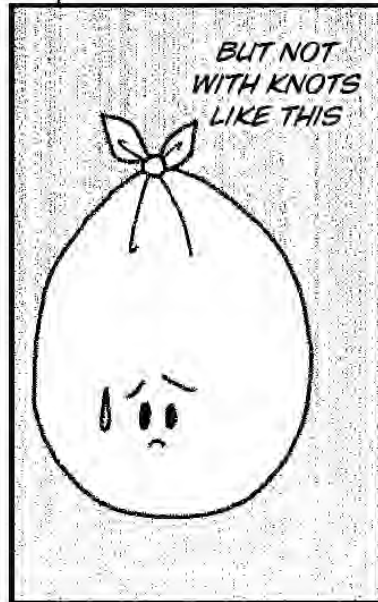
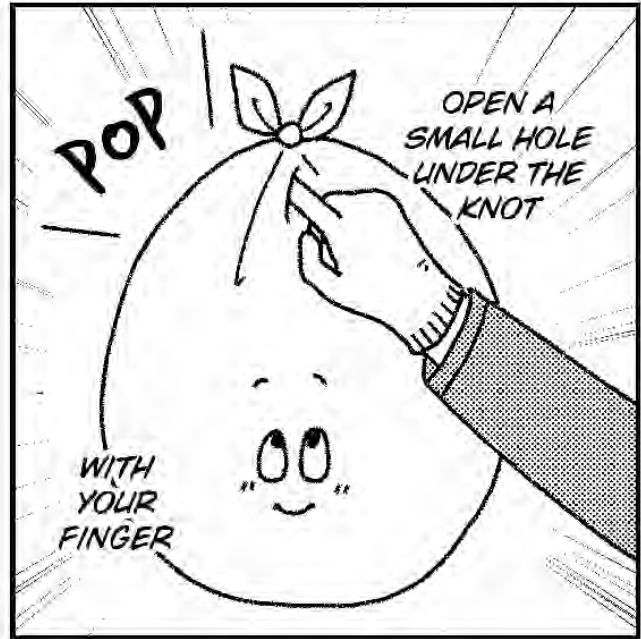


THAT'S WHEN OUR TECHNIQUE KICKS IN FOR CARRYING LOTS OF BAGS AT ONCE! FIRST, MAKE SURE THE BAGS ARE TIED TIGHTLY...



BRING THEM BACK TO THE GARBAGE TRUCK, WE THEN HAVE TO RETURN TO THE GARBAGE COLLECTION SPOT FOR MORE

WHEN THERE IS MORE GARBAGE TO COLLECT THAN EXPECTED, IF WE GRAB JUST ONLY FOUR BAGS AND





NOW THIS FEELS GOOD

WHEN THE STREET HAS BEEN CLEANED UP



SERIOUSLY, WHAT ARE YOU DOING?!

AND NOW, THE PRESTIGIOUS

NO. 1!!



WE THINK, "WE CLEANED UP ALL THAT GARBAGE FROM THIS MORNING!"

AS I LOOK AT THE EVENING SUN GOING DOWN BEHIND THE CLEANED-UP CITY,



THERE SURE WAS A LOT TODAY

AFTER FINISHING COLLECTION FOR THE DAY, WHILE HEADING TO THE WASTE DISPOSAL CENTER ALONG YOUR OWN ROUTE...

7000 ~~~



SURE WORKED UP AN APPETITE, HUH?

I FEEL LIKE I'M THE ONE MAKING EVERYONE'S EVERYDAY LIVES POSSIBLE. "AREN'T I GREAT?"

I FEEL LIKE THEY SHOULD MAKE A DOCUMENTARY ON US! THAT'S WHY THIS RANKS AT GLORIOUS NO. 1!!



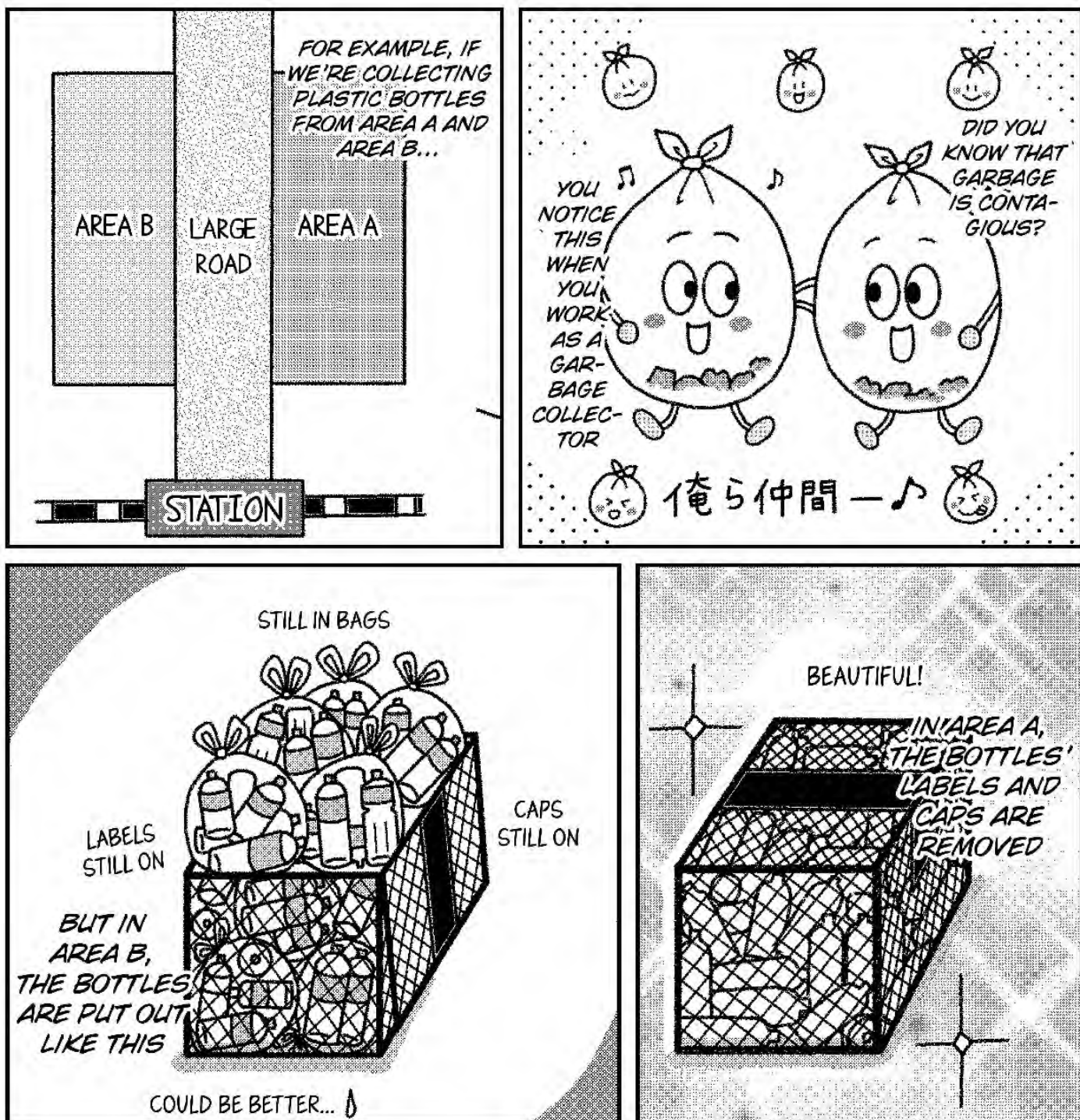
ガッツポーズ

FIST-PUMPING

ANOTHER FINE DAY OF WORK!!

WE THINK, "I SURE WORKED HARD TODAY" AS WE SOAK IN THE SETTING SUN

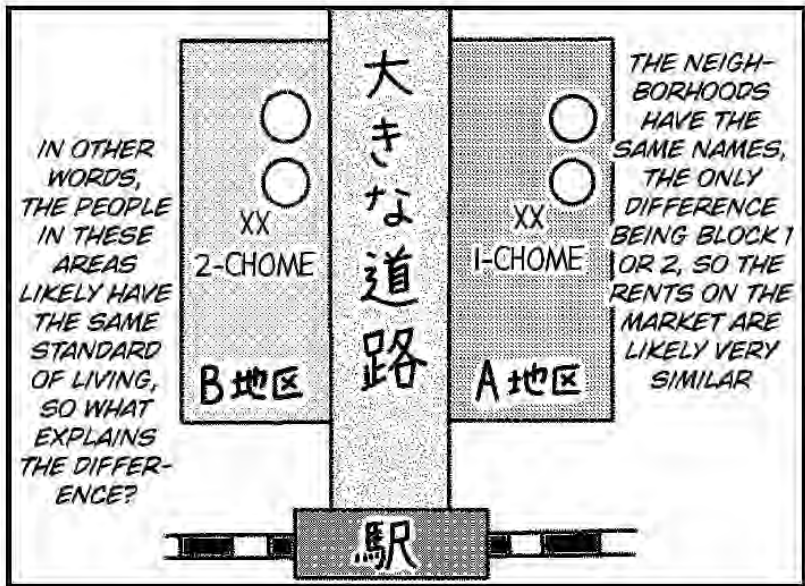
CONTAGIOUS



*Read from the first row from right to left, then move down to the second row and read again from right to left.



IT'S PROBABLY BECAUSE THEY'RE MIMICKING THEIR NEIGHBORS WHEN IT COMES TO GARBAGE



IN OTHER WORDS, THE PEOPLE IN THESE AREAS LIKELY HAVE THE SAME STANDARD OF LIVING, SO WHAT EXPLAINS THE DIFFERENCE?

THE NEIGHBORHOODS HAVE THE SAME NAMES, THE ONLY DIFFERENCE BEING BLOCK 1 OR 2, SO THE RENTS ON THE MARKET ARE LIKELY VERY SIMILAR



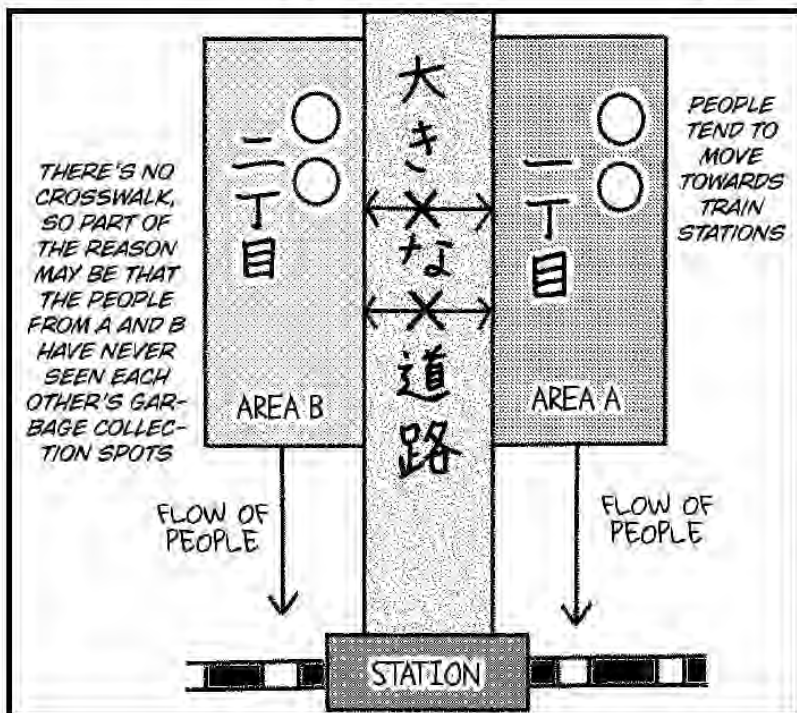
I GUESS I DON'T NEED TO TAKE THE LABELS OFF?

I SEE! ON THE OTHER HAND, IF THE PLASTIC BOTTLE COLLECTION SPOT IS IN DISARRAY, IT'S UNDERSTANDABLE THAT PEOPLE MIGHT THINK, "I GUESS IT'S OK IF THINGS ARE A LITTLE MESSY."



OH! I SHOULD TAKE OFF THE CAPS!

IF ALL THE BOTTLES WERE PROPERLY ORGANIZED, THEN PEOPLE WOULD HAVE TROUBLE BEING THE ONLY ONE TO THROW THEIRS AWAY SLOPPILY



THERE'S NO CROSSWALK, SO PART OF THE REASON MAY BE THAT THE PEOPLE FROM A AND B HAVE NEVER SEEN EACH OTHER'S GARBAGE COLLECTION SPOTS

PEOPLE TEND TO MOVE TOWARDS TRAIN STATIONS



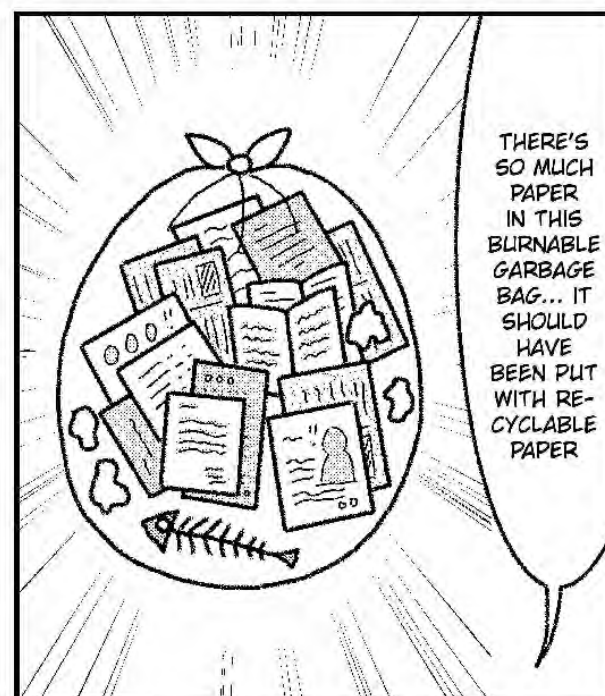
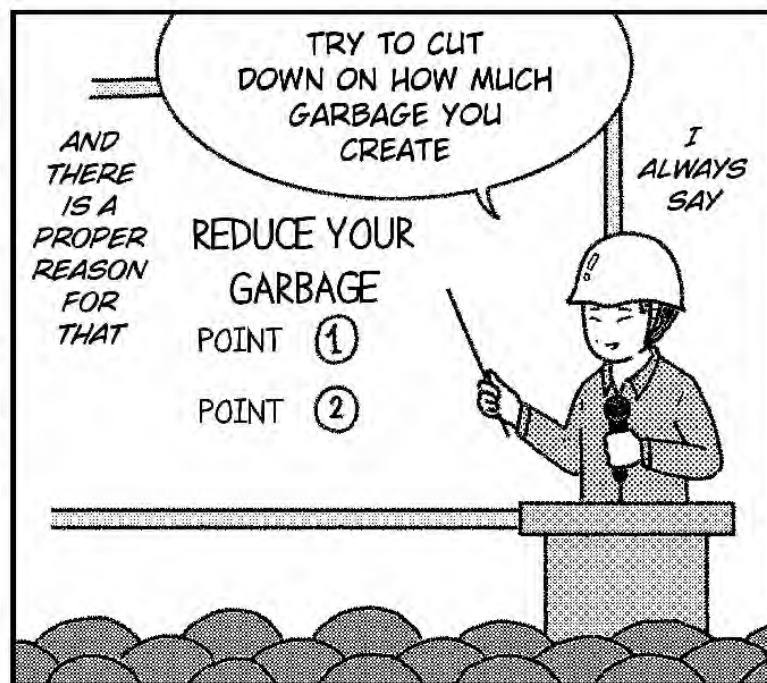
BUT IT'S A BIG ROAD, ISN'T IT?

CAN HAVE SUCH A BIG DIFFERENCE

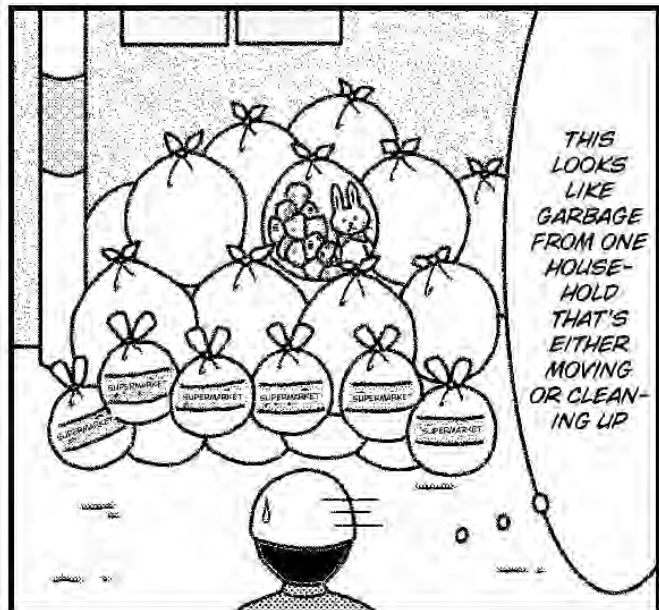
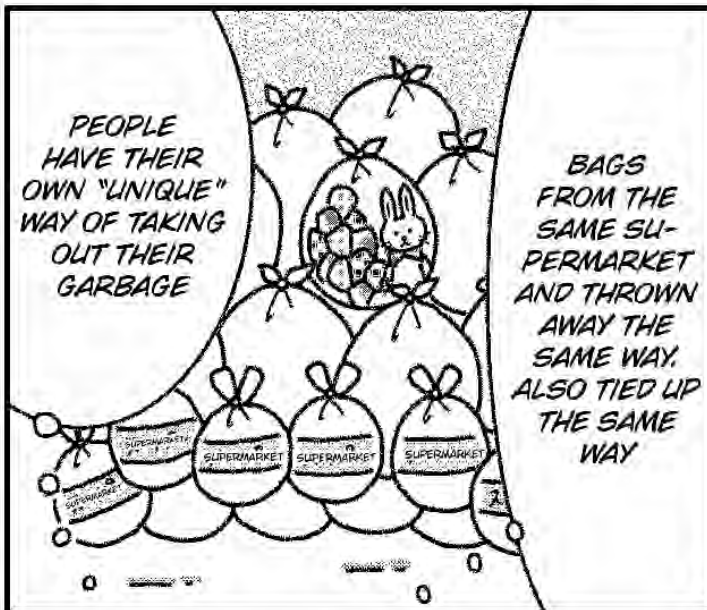
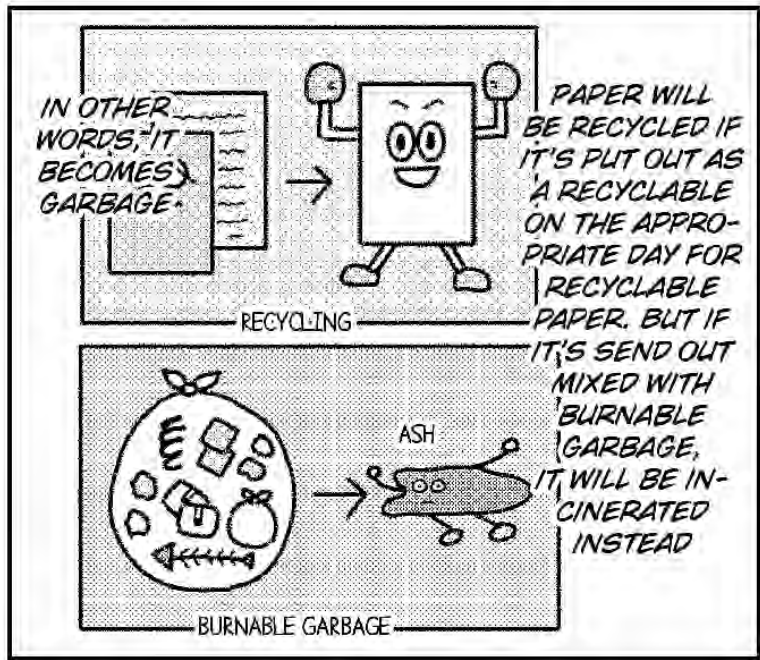
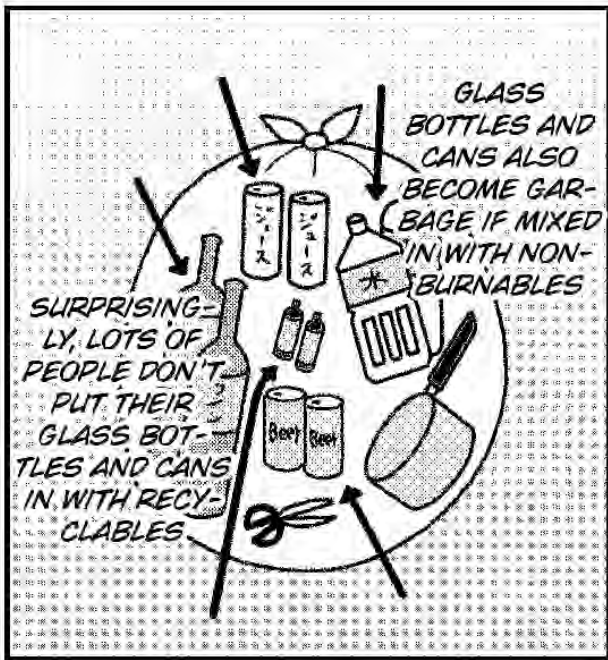
BUT IT'S INTERESTING THAT JUST CROSSING ONE ROAD

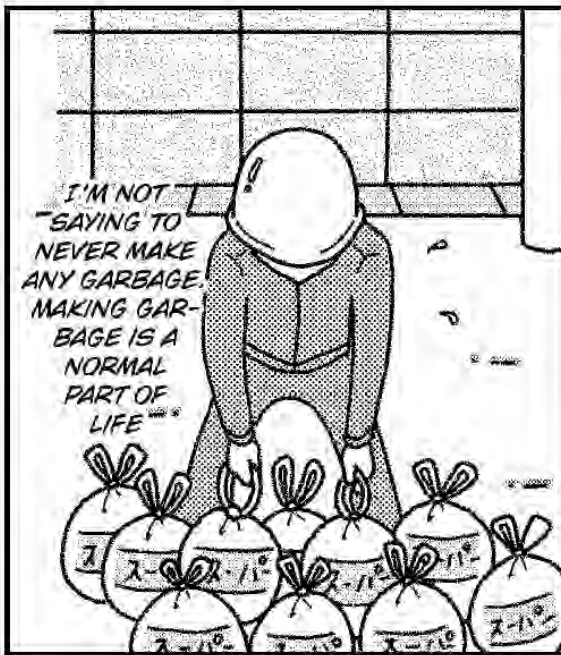


FINAL DISPOSAL SITE, PT. 1



*Read from the first row from right to left, then move down to the second row and read again from right to left.





I'M NOT SAYING TO NEVER MAKE ANY GARBAGE. MAKING GARBAGE IS A NORMAL PART OF LIFE...



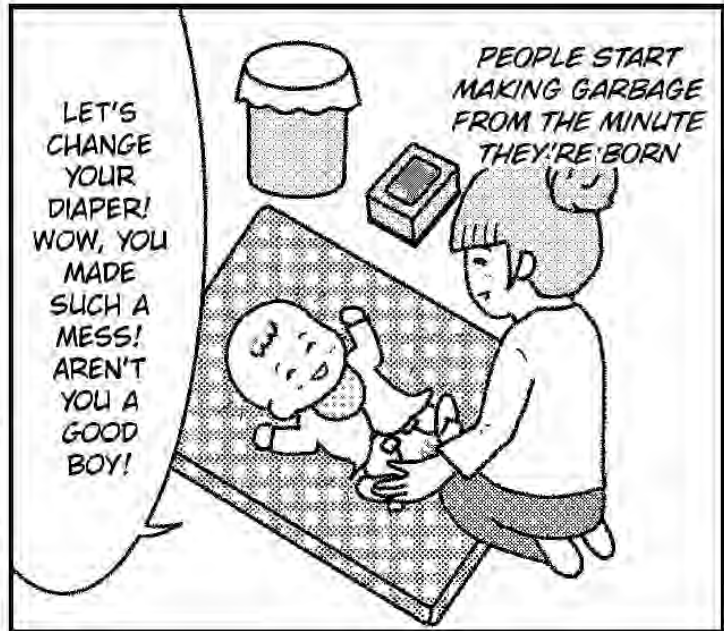
YEP, THIS TRASH ALL CAME FROM THE SAME HOUSEHOLD...

HOWEVER, FEW PEOPLE HAVE A REAL SENSE OF THE FACT THAT GARBAGE DISPOSAL SITES HAVE A FIXED CAPACITY

WE TAKE IT FOR GRANTED THAT WE CAN THROW OUT THE TRASH, AND MOST PEOPLE THINK WE CAN KEEP TAKING IT FOR GRANTED FOREVER



THERE ARE LOTS OF MAGAZINES AND RECYCLABLE PAPER PUT OUT AS BURNABLES...



LET'S CHANGE YOUR DIAPER! WOW, YOU MADE SUCH A MESS! AREN'T YOU A GOOD BOY!

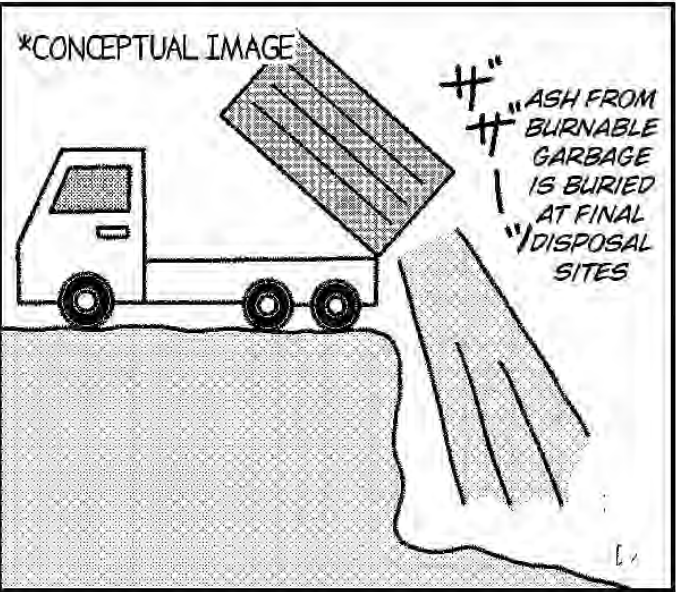
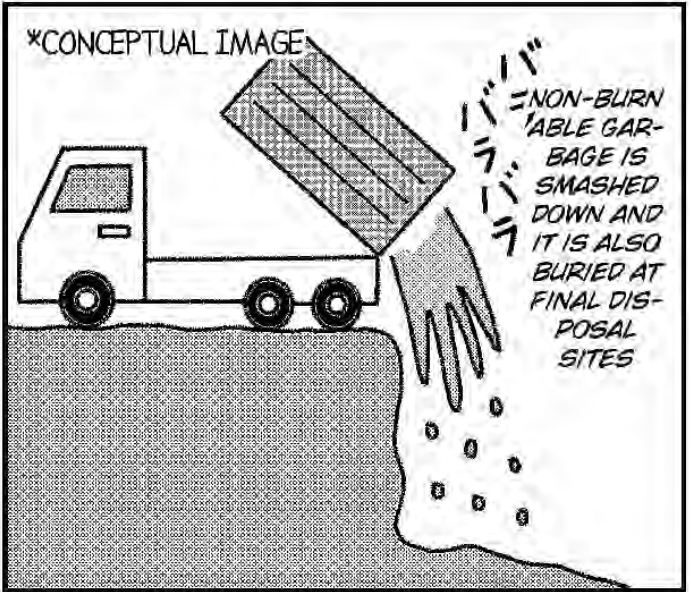
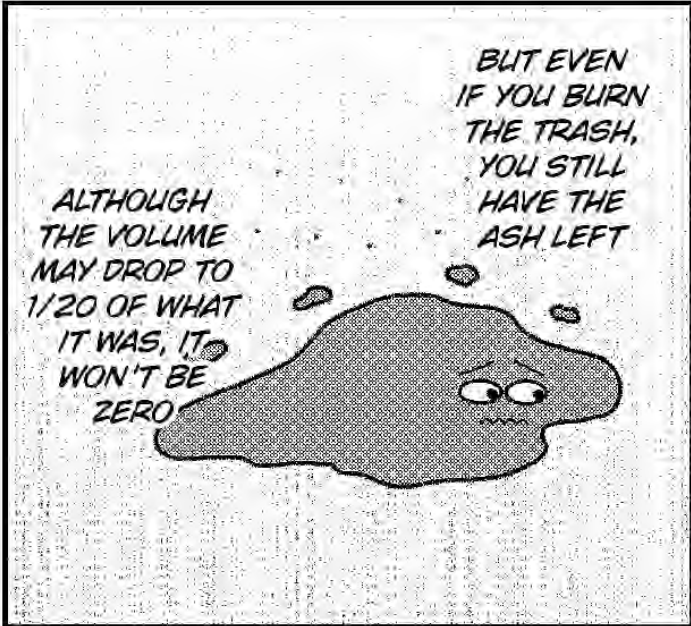
PEOPLE START MAKING GARBAGE FROM THE MINUTE THEY'RE BORN



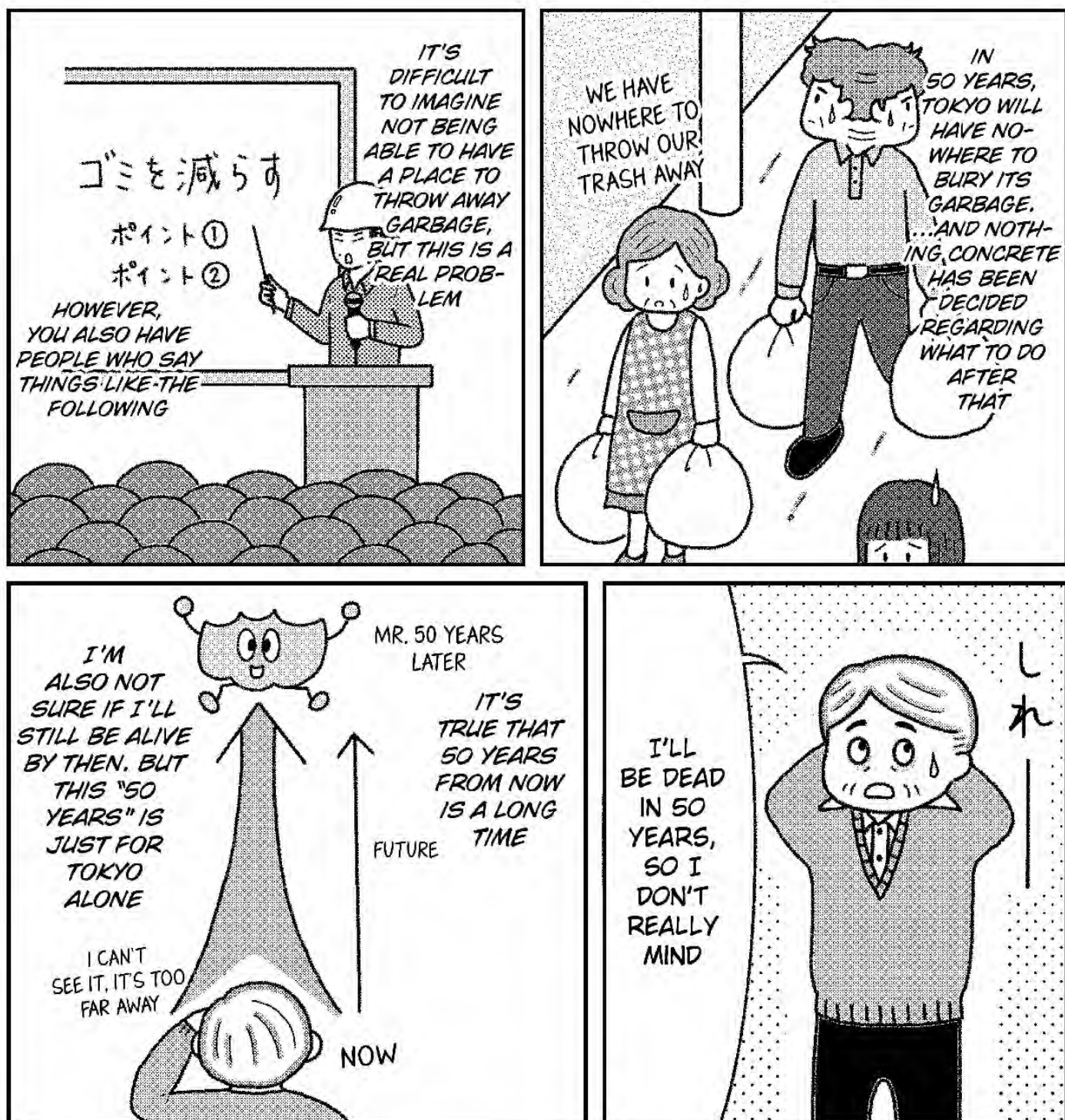
SO ALL I CAN DO IS COLLECT THEIR GARBAGE



THEY COULD HAVE SEPARATED THOSE PROPERLY... BUT YOU KNOW, GARBAGE COLLECTION IS MY JOB



FINAL DISPOSAL SITE, PT. 2



*Read from the first row from right to left, then move down to the second row and read again from right to left.

ALSO,
WHEN I TOOK
A TOUR OF A
FINAL DIS-
POSAL SITE
IN ANOTHER
CITY...

WILL ONLY LAST ANOTHER 30 YEARS OR SO

OUR PREFECTURE'S LOCAL FINAL DISPOSAL SITE

ONCE, ON A LOCAL ENVIRONMENTAL TV SHOW, I WAS TALKING WITH A PERSON INVOLVED IN GARBAGE COLLECTION

WOW. THAT'S EVEN LESS TIME THAN TOKYO'S FINAL DISPOSAL SITE

THIS IS HOW MUCH SPACE WE HAVE LEFT

あえっ!? あれだけ?!

THAT'S JUST HOW MUCH GARBAGE WE HAVE

THAT FENCE IS AT THE CEILING

THAT'S RIGHT. JUST TAKE A LOOK OVER THERE.

OUR LOCAL DISPOSAL SITE... IT'S ALREADY 90% FULL

WHAT?! 90%?!

WHAT?! JUST 10 YEARS?!

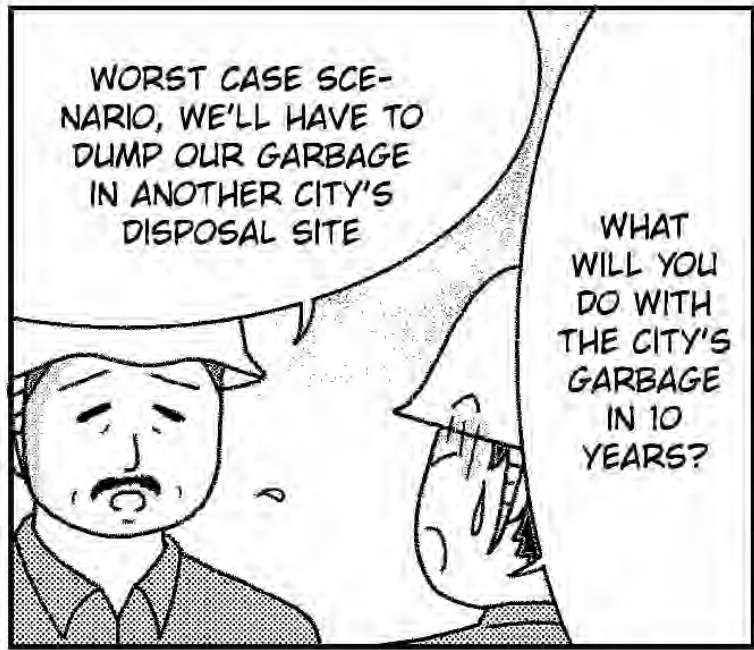
MAYBE 10 YEARS, MAYBE LESS...

BY THE WAY, HOW MUCH TIME DOES THIS DISPOSAL SITE HAVE LEFT?



WOW, THAT'S EXPENSIVE! THEY RAISED THE PRICE ON TRASH BAGS AGAIN!!

WE'LL HAVE TO PAY OTHER DISPOSAL SITES FOR TAKING OUR GARBAGE, SO THAT MEANS WE'LL NEED TO FIND A SOLUTION EITHER BY RAISING TAXES OR THE PRICE OF CHARGE-ABLE BAGS



WORST CASE SCENARIO, WE'LL HAVE TO DUMP OUR GARBAGE IN ANOTHER CITY'S DISPOSAL SITE

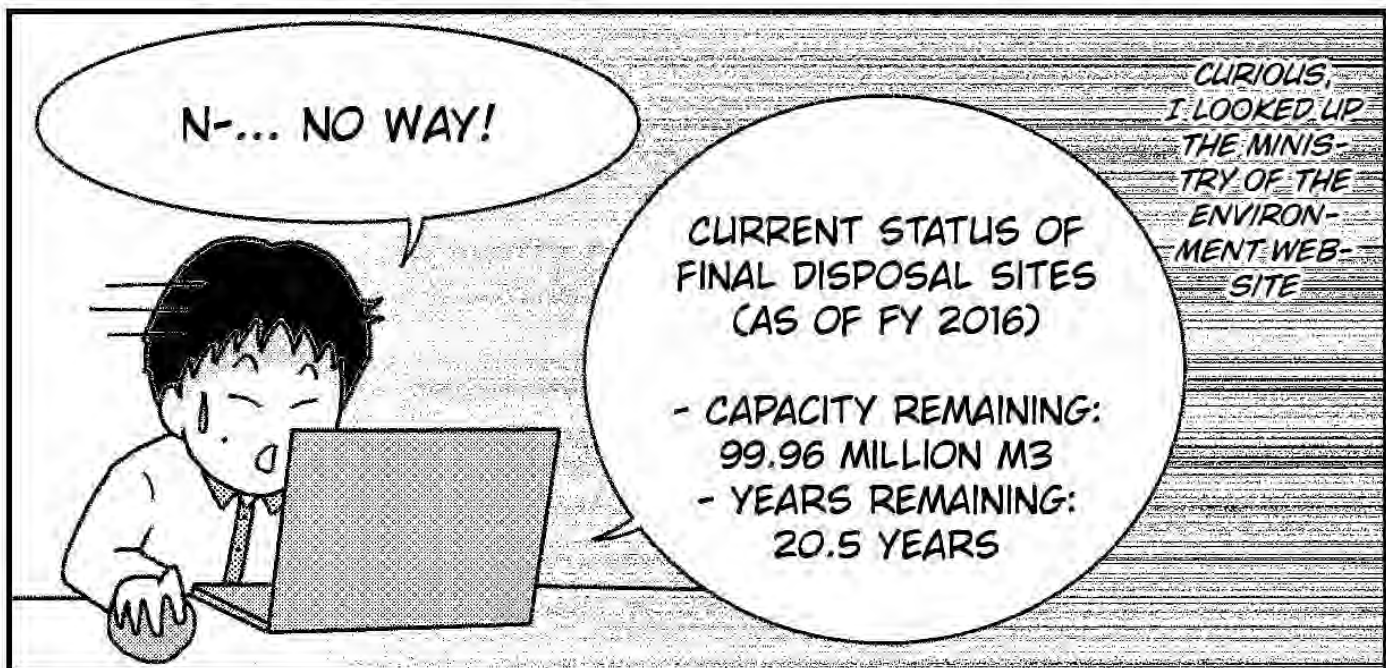
WHAT WILL YOU DO WITH THE CITY'S GARBAGE IN 10 YEARS?



INDEED... OTHER DISPOSAL SITES ALSO ONLY HAVE SO MUCH CAPACITY



ASIDE FROM PAYING TO USE OTHER DISPOSAL SITES, IT ALSO COSTS MONEY TO TRANSPORT THE GARBAGE... BUT THE PROBLEM IS, THIS WILL ALSO SHORTEN THE LIFESPAN OF THE RECEIVING DISPOSAL SITE

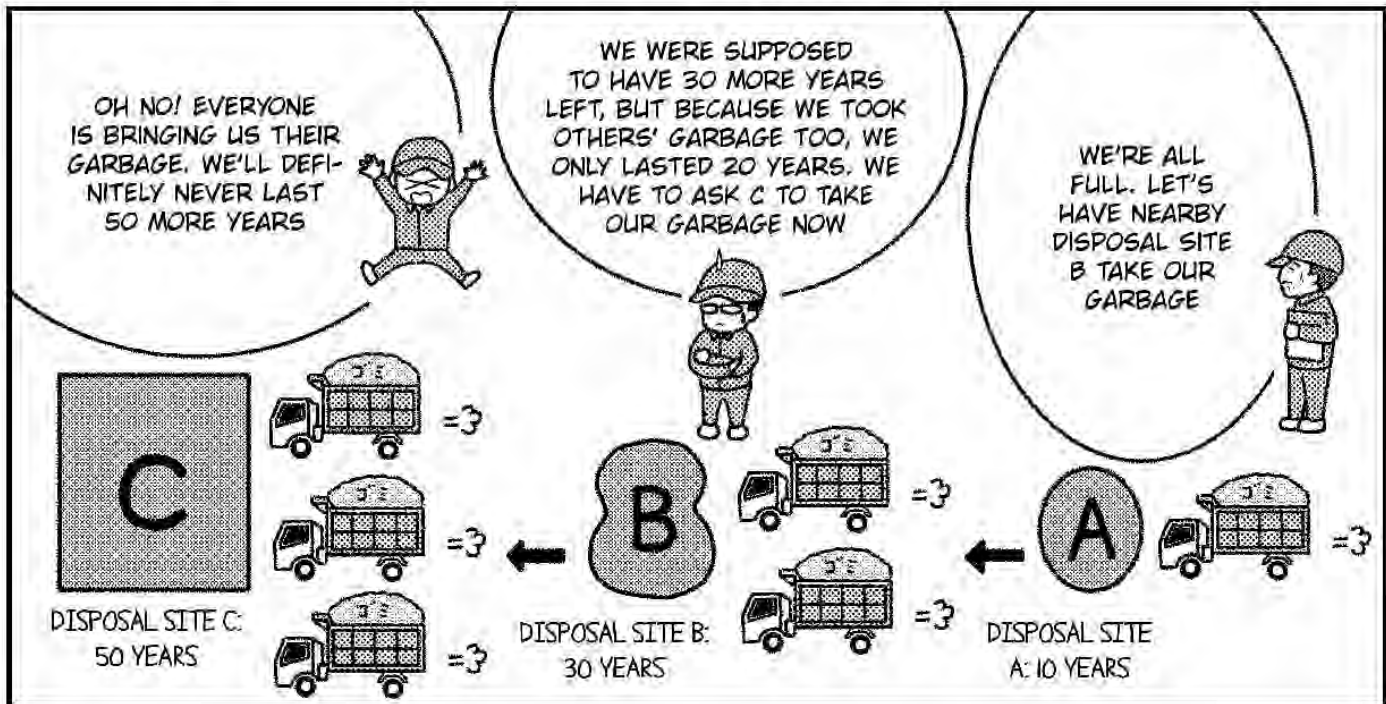
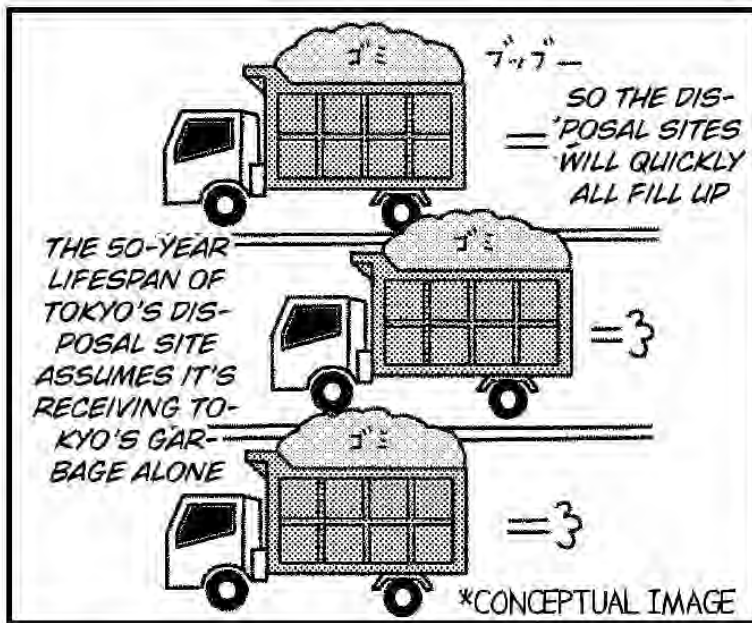
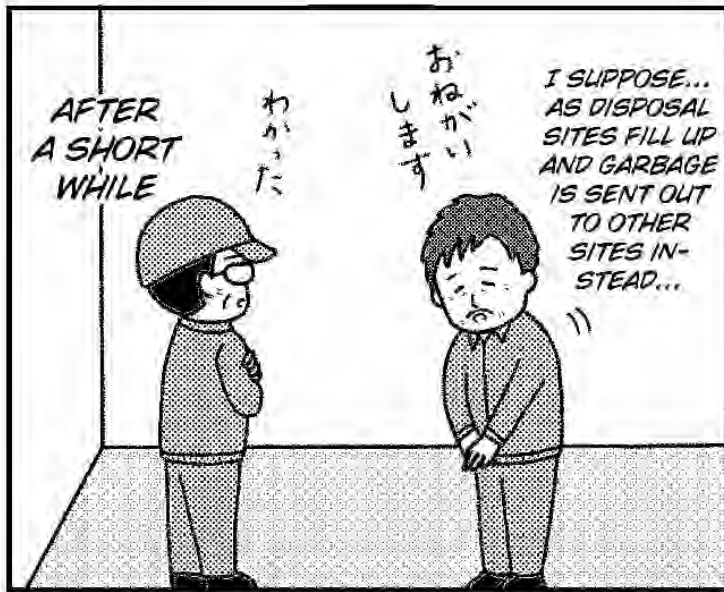


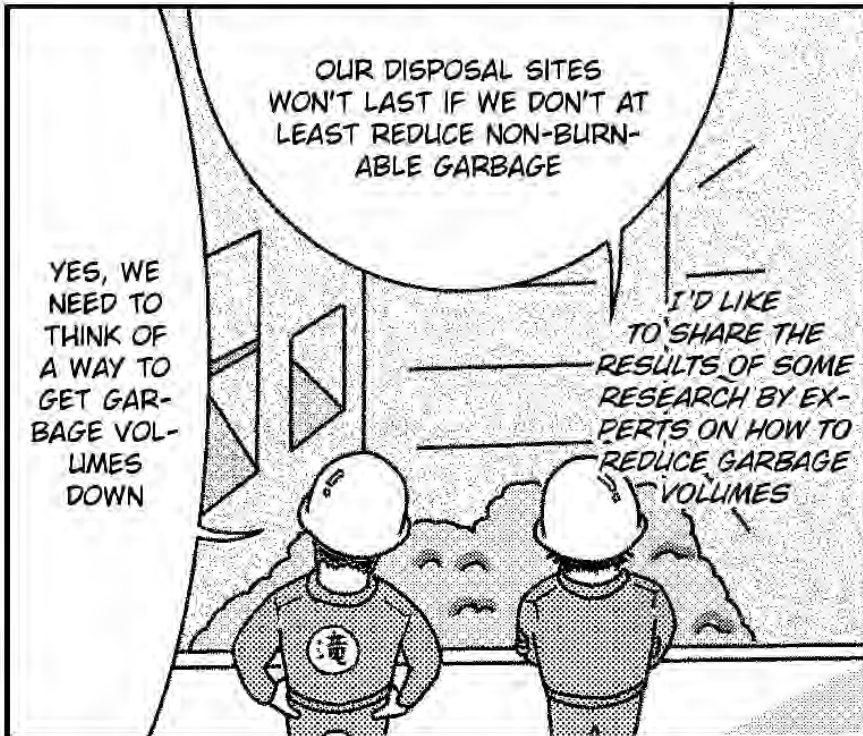
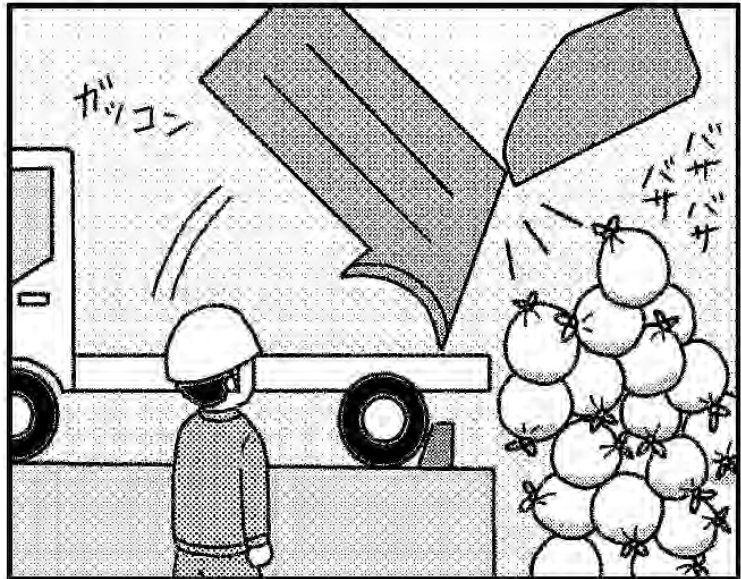
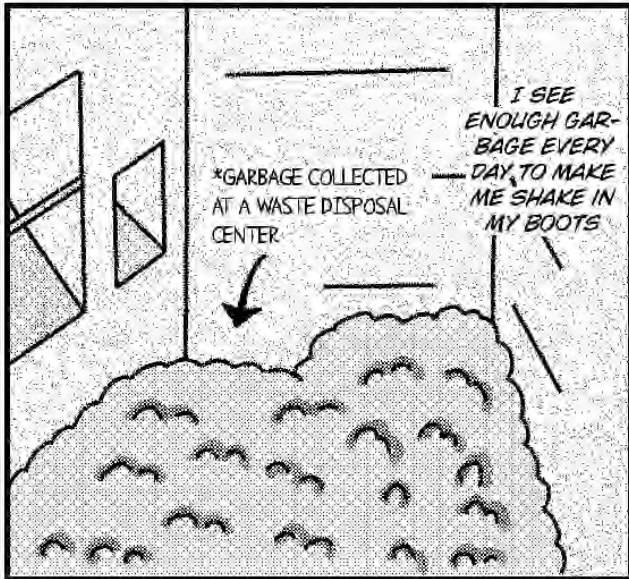
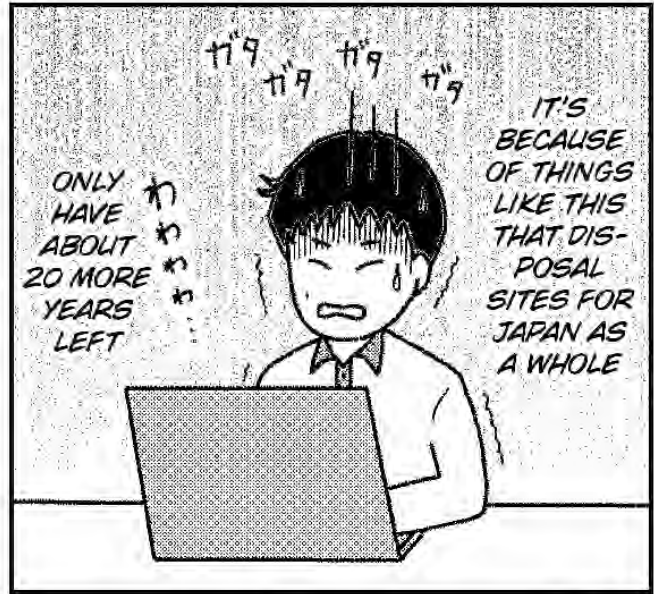
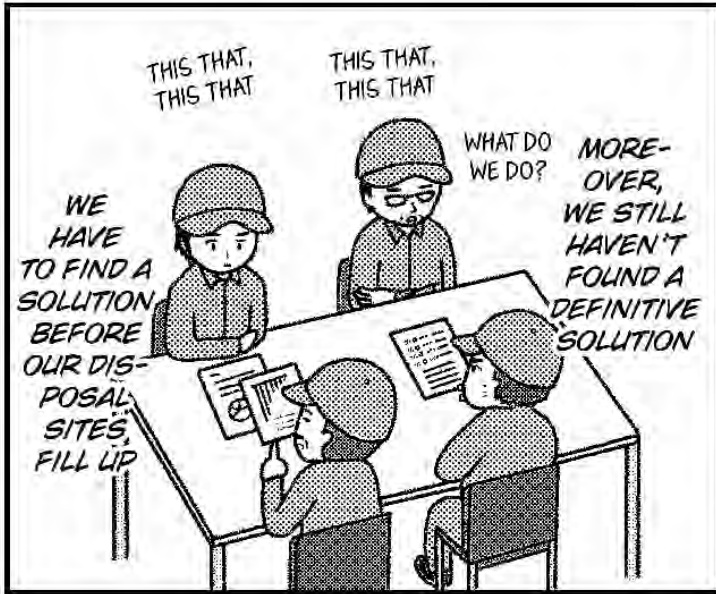
N-... NO WAY!

CURRENT STATUS OF FINAL DISPOSAL SITES (AS OF FY 2016)

- CAPACITY REMAINING: 99.96 MILLION M3
- YEARS REMAINING: 20.5 YEARS

CURIOUS, I LOOKED UP THE MINISTRY OF THE ENVIRONMENT WEBSITE

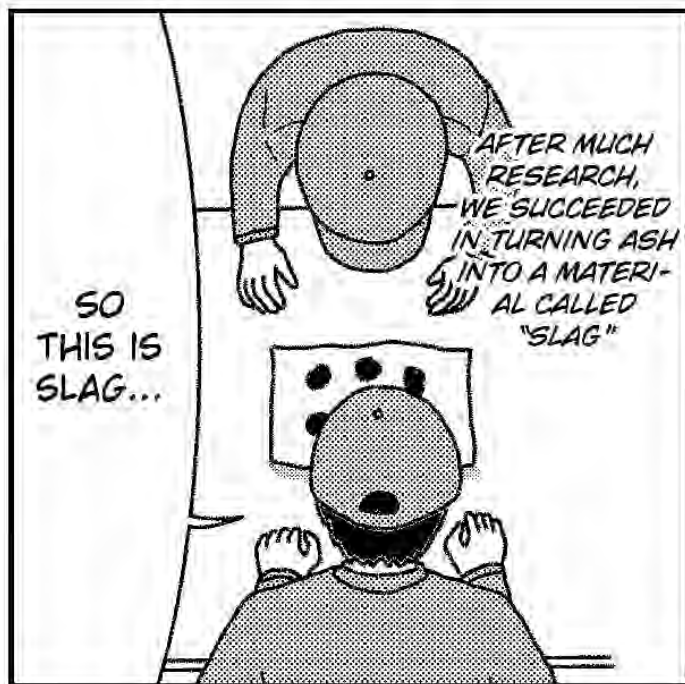




FINAL DISPOSAL SITE, PT. 3



*Read from the first row from right to left, then move down to the second row and read again from right to left.



SO THIS IS SLAG...

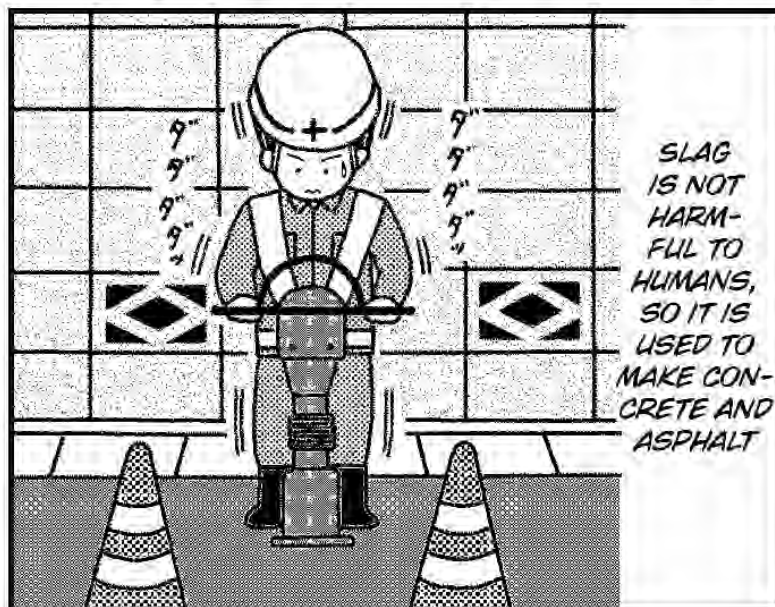
AFTER MUCH RESEARCH, WE SUCCEEDED IN TURNING ASH INTO A MATERIAL CALLED "SLAG"



YEAH...

MOUNTAIN OF ASH

NOW WE HAVE ASH... IF WE COULD DO SOMETHING WITH THIS ASH...



SLAG IS NOT HARMFUL TO HUMANS, SO IT IS USED TO MAKE CONCRETE AND ASPHALT



SLAG ARE ROCK-LIKE MATERIAL CREATED BY HEATING ASH TO OVER 1200 DEGREES CELSIUS AND THEN COOLING IT AGAIN



HOWEVER, AT HOME...

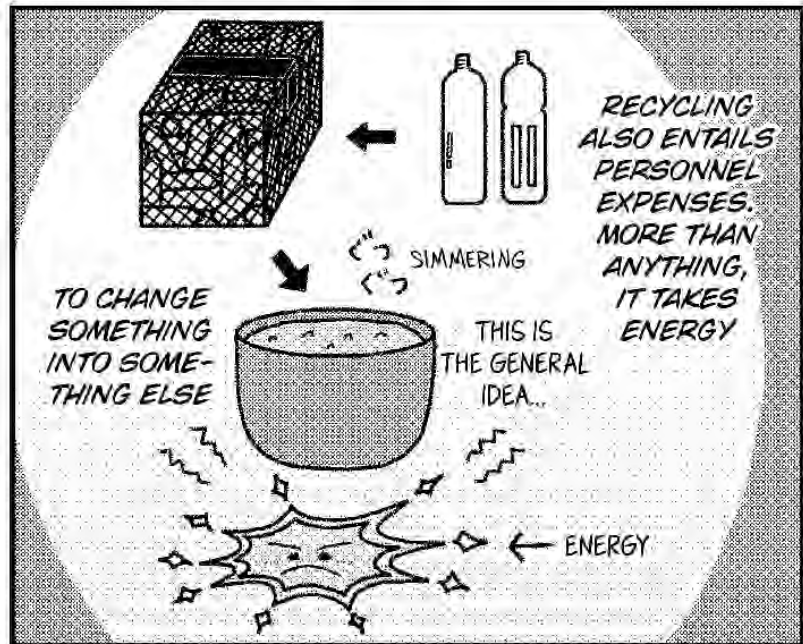
HOW ABOUT WE THROW OUT ALL THE FOOD IN THE REFRIGERATOR? IT'S ALL ABOUT TO EXPIRE

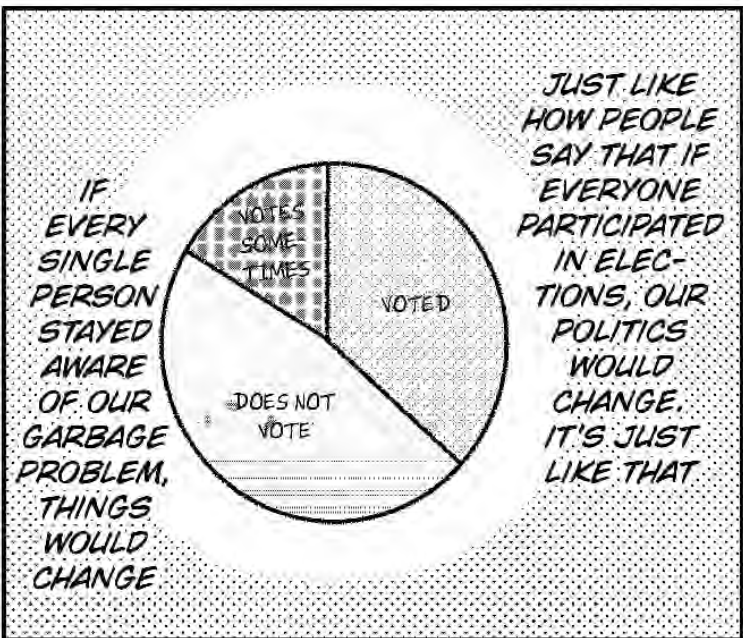
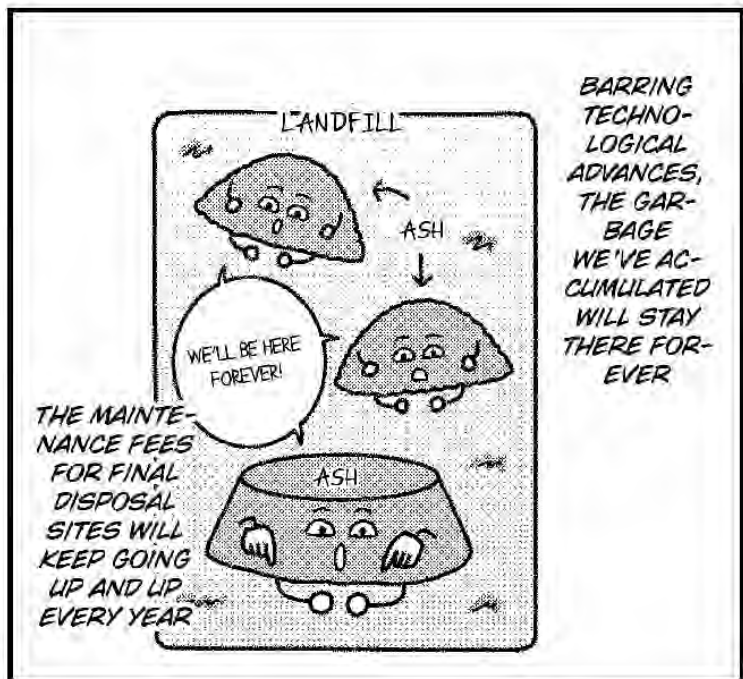
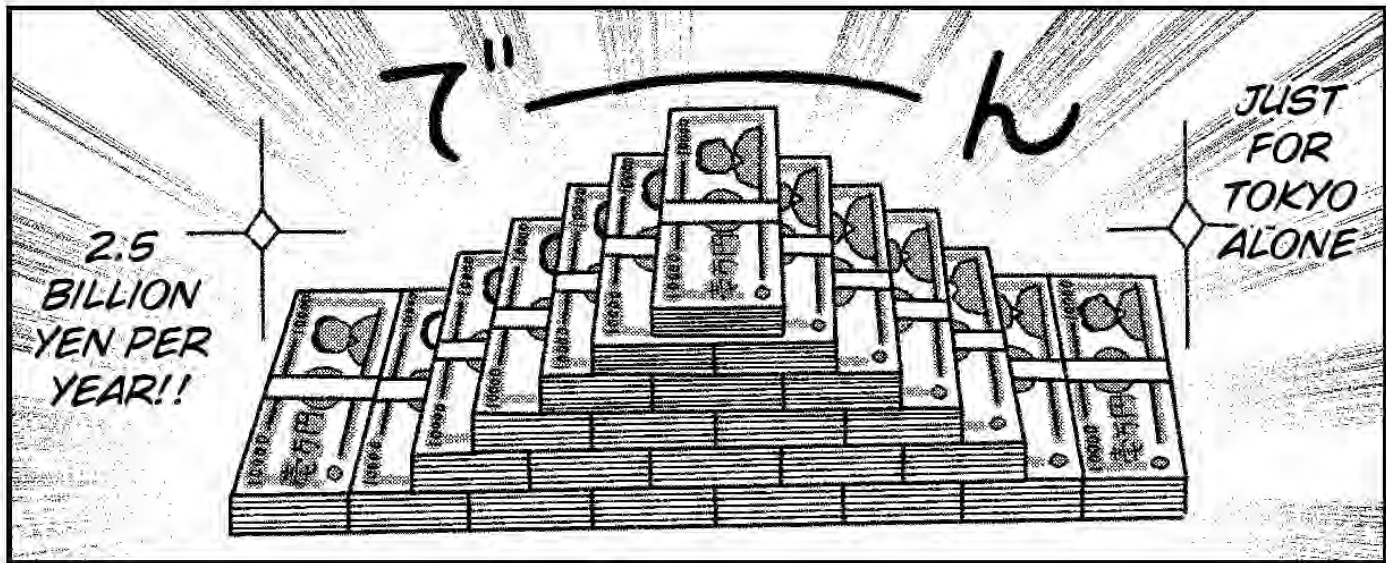


THIS WILL REDUCE ASH VOLUMES!

IN THIS WAY, WE CAN RECYCLE A LITTLE BIT OF ASH!







Title: Daily Life of a Garbage Collector : Mirai/Future

/ゴミ清掃員の日常 ミライ編

Author: Shuichi Takizawa & Yuki Takizawa ©Takizawake

/滝沢 秀一・滝沢 友紀 ©Takizawake

Publisher: Kodansha, Tokyo/講談社, 東京

Year: 2020

URL: <https://kc.kodansha.co.jp/product?item=0000341837> (Japanese)

*The copyright of this work is owned by Kodansha as the Publisher.

*JICA translated selected episodes with permission from the Author and Publisher for raising public awareness on waste management and for environmental education.

*This material may only be used for the above purposes. Please clearly indicate the source and do not alter it in any way.

